



March 25, 2009 Board Meeting



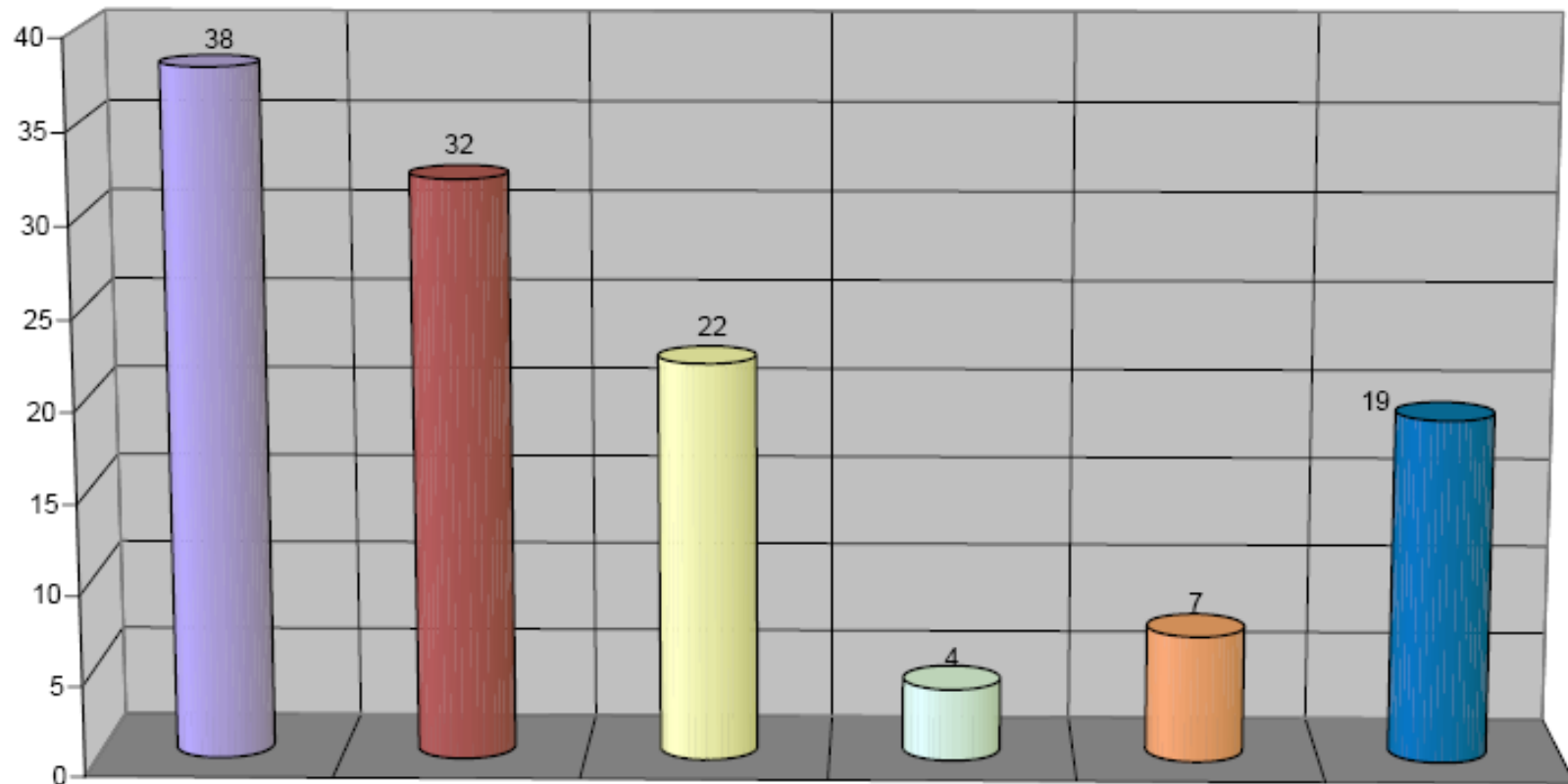
PROJECT OVERVIEW REPORT

PROJECT INDICATORS

MSBA Tools & Processes to Support Districts

- MSBA has created many standard forms, tools & processes to help expedite the process:
 - Template Requests for Services (RFS)
 - Standard Submission Packets - For OPM Review Panel and the Designer Selection Panel (DSP)
 - Standard Contracts – For OPM and designer services.
 - Enrollment Projection Tool – Allows districts to generate enrollment projections at no cost.
 - Owner's Project Manager (OPM) – advertising, interviewing, selection and approval
 - Designer Selection – advertising, interviewing, selection
 - Enrollment Agreement – review projections and reach agreement on capacity of the school/district
 - Feasibility Study Agreement

Status of OPM Selection March 2009



■ Total Approvals to Date

■ Total Approved as of 1/28/09

■ Upcoming Meetings

■ Town Employee

■ Pending MSBA Review

■ Districts Drafting RFS

Owner's Project Manager (OPM) Review Panel

- Since the last Board meeting:
 - Six additional districts have completed the OPM process:
 - The MSBA has now approved, has pending approval or has scheduled a presentation to the OPM panel for 75% of the Districts in the capital pipeline that require an OPM.

Owner's Project Manager

- The schedule for upcoming meetings is shown with the potential for 11 districts submitting for approval in the next four weeks.

Panel Date	District / School	Project Description Status	Est. Project Cost
30-Mar-09	Hopkinton PS – Center ES	Feasibility Assessment	\$24-\$26 mil
30-Mar-09	Longmeadow	Feasibility Assessment	To Be Determined
30-Mar-09	South Shore Voc/Tech HS	Repair Assessment	\$1.5-\$2.5 mil
13-Apr-09	Adams-Cheshire PS – Adams MS	Feasibility Invitation	\$25-\$35 mil

Owner's Project Manager

Panel Date	District / School	Project Description Status	Est. Project Cost
13-Apr-09	Attleboro PS – Attleboro HS	Repair Assessment	\$5-\$7 mil
13-Apr-09	Hamilton-Wenham PS – Cutler ES	Repair Assessment	\$1.2-\$3.0
13-Apr-09	Leominster PS – Leominster SHS	Repair Assessment	\$7-\$7.4 mil
13-Apr-09	Marblehead PS – Glover Primary	Feasibility Invitation	\$15-\$24 mil
13-Apr-09	Quincy PS – Central MS	Feasibility Invitation	\$35-\$45 mil

Owner's Project Manager

Panel Date	District / School	Project Description Status	Est. Project Cost
13-Apr-09	Sharon PS – Sharon MS	Feasibility Invitation	\$35-\$50 mil
30-Mar-09	Southbridge PS – Southbridge HS	Feasibility Invitation	\$80 mil
04-May-09	Uxbridge – Uxbridge HS	Feasibility Invitation	\$35-\$45 mil
04-May-09	Ashburnham- Westminster PS – Briggs ES	Feasibility Invitation	\$17-\$28 mil
04-May-09	Granby PS – Granby JHS/SHS	Feasibility Invitation	\$42-\$77 mil

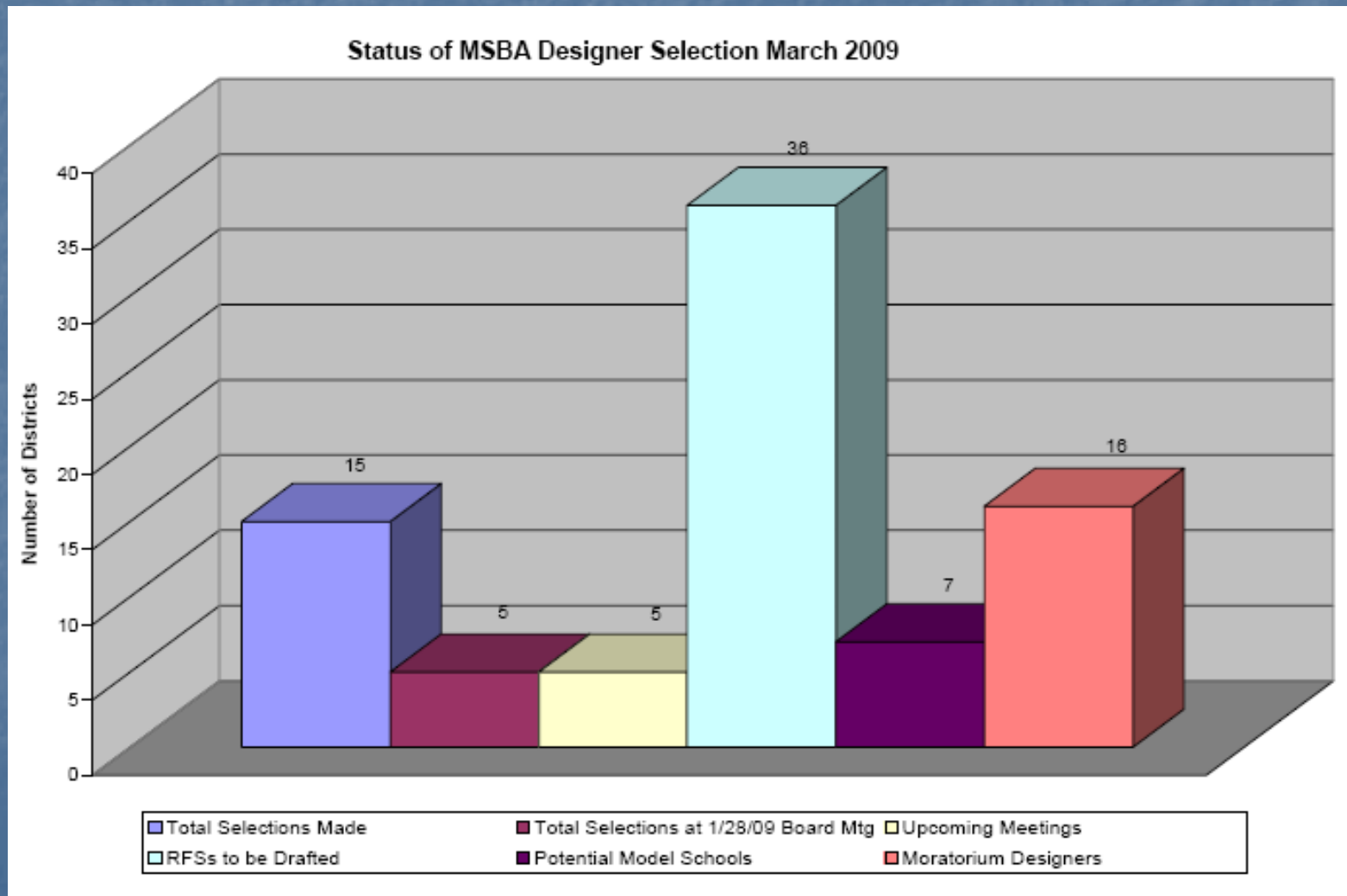
Owner's Project Manager

Panel Date	District / School	Project Description Status	Est. Project Cost
04-May-09	Maynard PS – Maynard HS	Feasibility Invitation	\$35-\$50 mil
04-May-09	Norwood PS – Norwood HS	Feasibility Invitation	\$65-\$70 mil
04-May-09	Southwick- Tolland PS – Woodland ES	Feasibility Invitation	\$15-\$30 mil
04-May-09	Sutton PS – Sutton MS	Feasibility Invitation	\$43 mil
04-May-09	Winchester – Vinson-Owen	Feasibility Invitation	\$20-\$25 mil

Owner's Project Manager

Panel Date	District / School	Project Description Status	Est. Project Cost
01-Jun-09	Dracut PS – Dracut SHS	Feasibility Invitation	\$40-\$80 mil
01-Jun-09	Fairhaven PS – Rogers ES	Feasibility Invitation	\$20-\$30 mil
01-Jun-09	Narragansett – Templeton Center	Feasibility Invitation	\$28-\$40 mil
06-Aug-09	Douglas – Douglas IS	Feasibility Invitation	\$35-\$52 mil
06-July-09	Peabody PS – J Henry Higgins MS	Repair Assessment	\$35 mil

Status of MSBA Designer Selection March 2009



Designer Selection Panel

Panel Date	District / School	Status	Estimated Project cost	# of proposals received	Top Ranked Firms*
2/3/09	Billerica Parker ES	Feasibility Study	\$15 to 23 million	12	SMMA Ai3 DiNisco
2/3/09	Berlin-Boylston Tahanto Reg. HS	Feasibility Study	\$20 to 32 million	N/A	HMFH (Interviews Held)
2/17/09	Informational Interviews held: Burt Hill, JCJ Architecture				
2/17/09	Sturbridge Burgess ES	Preferred Scheme For Add/Reno	\$35 to 45 million		DRA Kaestle Boos Ai3
2/17/09	Woburn Goodyear ES	Feasibility Study	\$15.5 - 20 million		Tappe Assoc Flansburgh DiNisco

***BOLD** = First Ranked Selection

Designer Selection Panel

Panel Date	District / School	Status	Estimated Project cost	# of proposals received	Top Ranked Firms*
3/3/09	Danvers Danvers High School	Feasibility Study	\$65 - 75 million	13	DiNisco Design Partnership Ai3 Mount Vernon
3/3/09	Rochester Rochester Memorial School	Feasibility Study	\$10 - 20 million	6	Flansburgh Turowski Knight, Bagge & Anderson
3/3/09	Stow (Nashoba RSD) Pompositicut Elementary School	Feasibility Study	\$15 - 24 million	12	SMMA Michael Rosenfeld Lamoureux Pagano

***BOLD** = First Ranked Selection

Designer Selection Panel

Panel Date	District / School	Status	Estimated Project cost	# of proposals received	Top Ranked Firms*
3/24/09	Carver - Gov John Carver ES	Feasibility Study	\$30 - 65 million	11	Design Partnership Flansburgh DiNisco Interviews to be held
3/24/09	Dedham - Avery ES	Feasibility Study	\$18 - 22 million	9	Dore & Whittier Michael Rosenfeld Raymond Design
3/24/09	Grafton	Feasibility Study	\$30 - 65 million	8	SMMA Lamoureux Pagano Michael Rosenfeld
3/24/09	Norfolk - Freeman-Centennial IS	Feasibility Study	\$20 - 40 million	8	Flansburgh Raymond Design Dore & Whittier

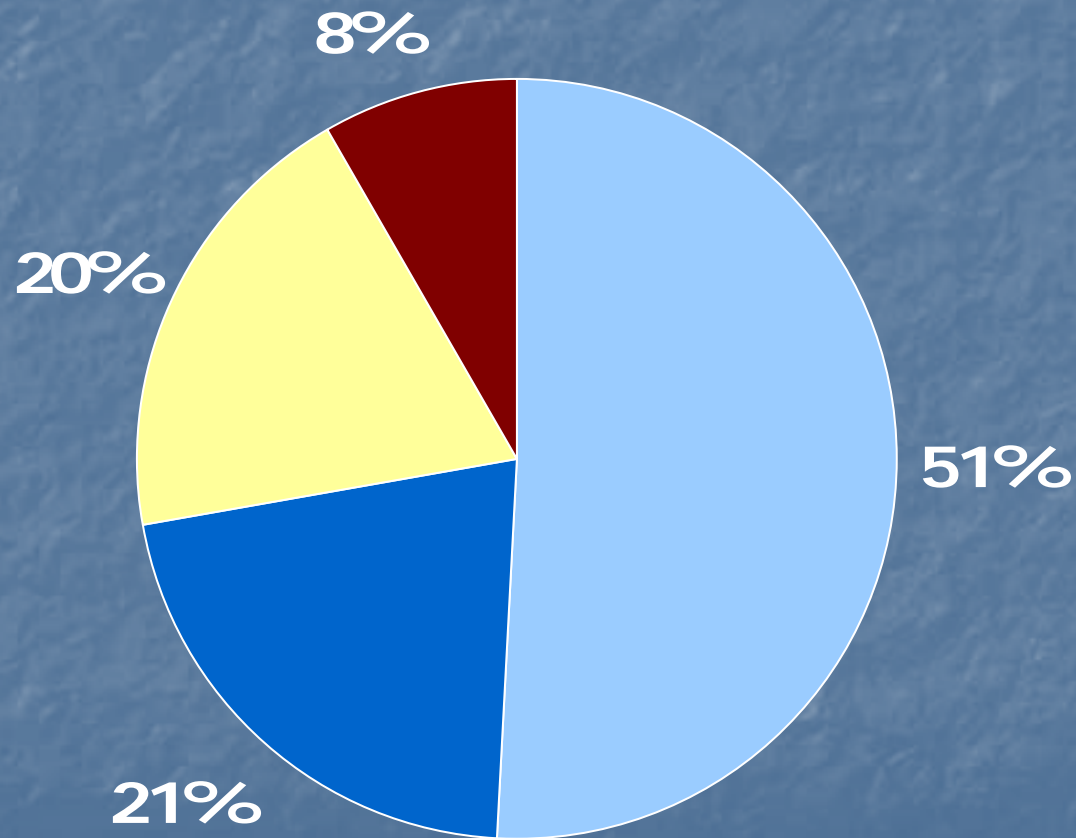
***BOLD** = First Ranked Selection

Designer Selection Panel

- The following Districts are actively procuring designer services and are tentatively scheduled for Upcoming Designer Selection Panel meetings.

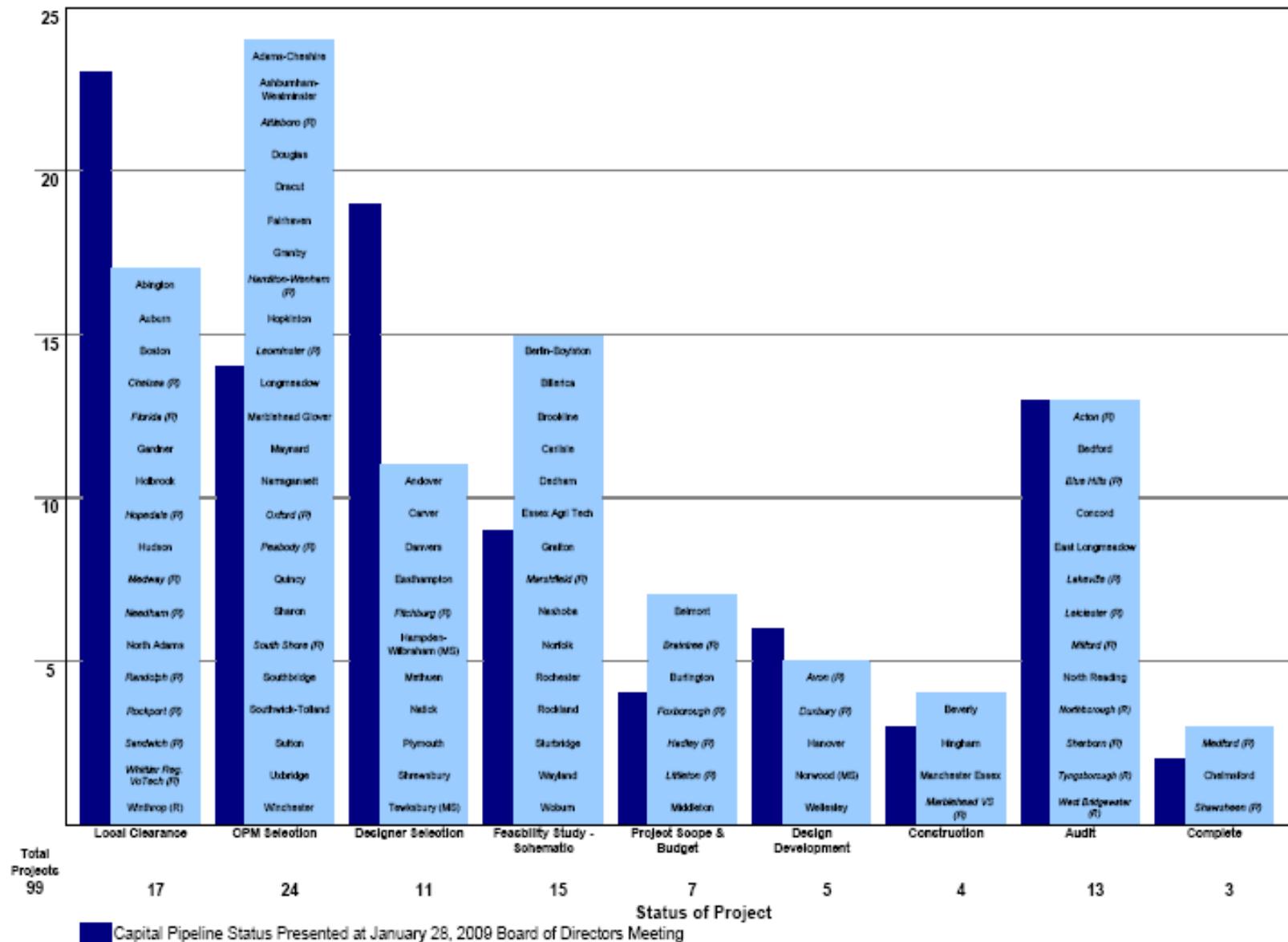
Panel Date	District / School	Status	Est. Project Cost
4/7/09	Methuen - Methuen HS	RFS in draft	\$80 - 90 million
4/7/09	Carver - Gov John Carver ES	Interviews	\$30 - 65 million
5/19/09	Longmeadow - Longmeadow HS	RFS in draft	\$60 - 90 million
6/2/09	Southbridge - Southbridge HS	RFS in draft	\$80 million

Enrollment



- Base Enrollment Projections Communicated to District
- Enrollment Meeting Scheduled/On-Going Discussion
- Design Enrollment Certification Sent to District
- Design Enrollment Certification Signed/Agreement Reached

Project Status



Model Schools Phase II

School/Design Submittal 11/5/08 RFS – Phase II	Designer	Gross Square Footage	Design Enrollment
Lawrence High School	Flansburgh Assoc	565,000 sq ft	3,000
Ipswich High School	Flansburgh Assoc	201,500 sq ft	1,200
Auburn High School	Flansburgh Assoc	176,734 sq ft	900
Hopkinton High School	Design Partnership of Cambridge	200,330 sq ft	1,100
Medway High School	Design Partnership of Cambridge	208,331 sq ft	1,000
North Andover High School	DiNisco Design Partnership	292,000 sq ft	1,320
Littleton High School	Dore & Whittier Architects	114,144 sq ft	500 (750 core)
Chicopee Comprehensive High School	Mt. Vernon Group	321,978 sq ft	1,584
Lincoln-Sudbury High School	Office of Michael Rosenfeld	218,000 sq ft	1,200
Hudson High School	Symmes, Maini & McKee Associates	383,500 sq ft	1,850
Clinton High School	Strekalovsky Architecture, Inc	122,900 sq ft	600

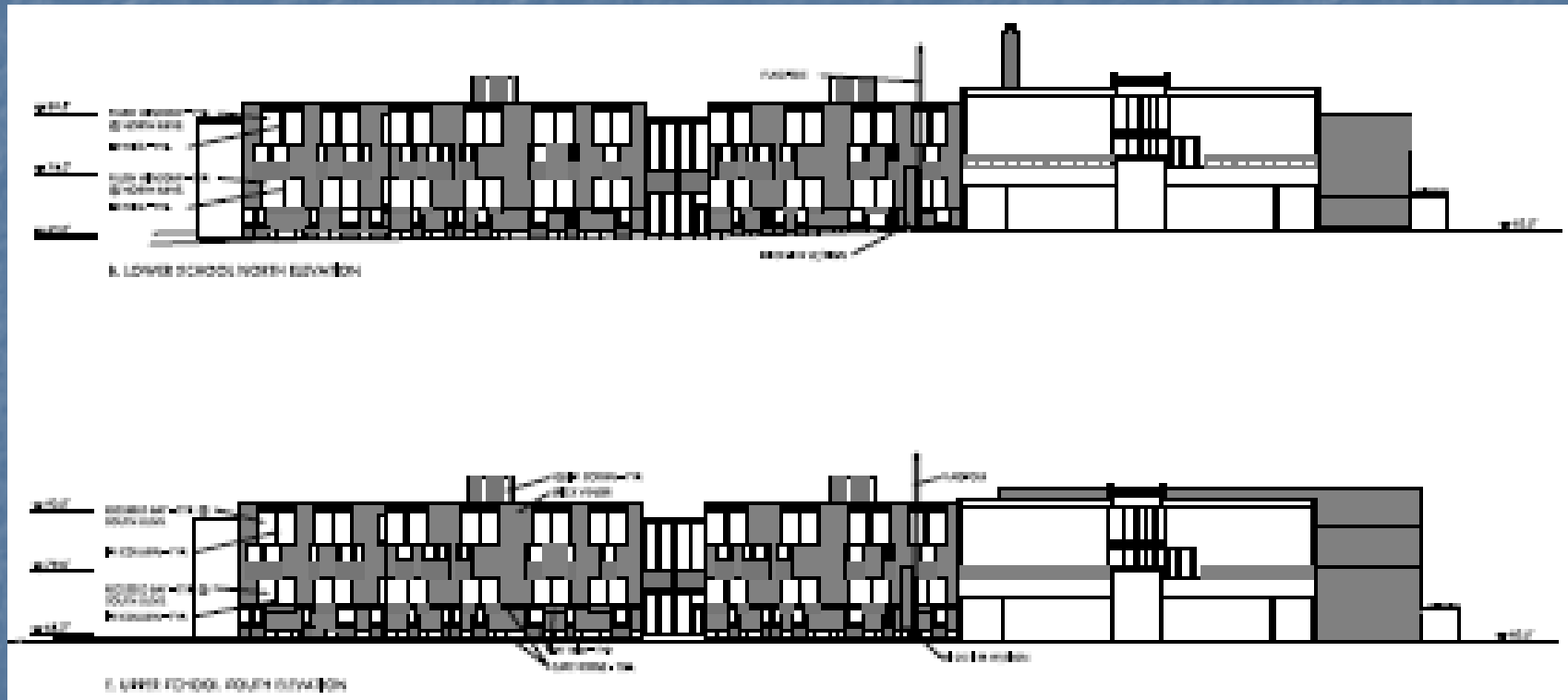
Invitation to Model School

- Plymouth North High School
- Somerset-Berkley Regional High School

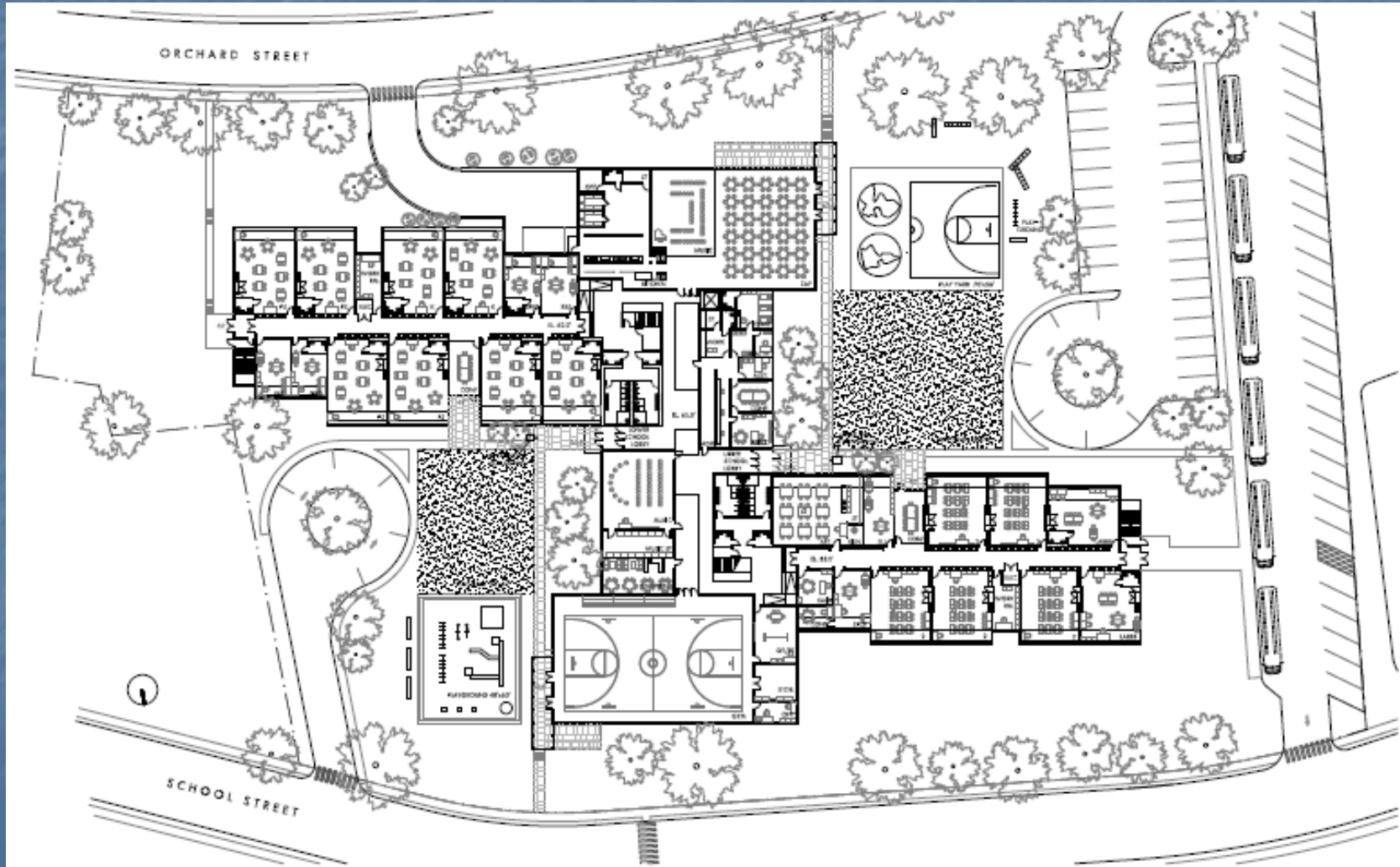
Belmont – Wellington ES

- 93,000 Sq. Ft.
- Built in 1917
- Grades K-5
- Enrollment: 575
- Category: Preferred Schematic for new Construction
- District total project budget: \$40,664,431
- Reimbursement Rate: 40.00%
- Approximate total grant amount: \$12,400,000

Belmont – Wellington ES



Belmont – Wellington ES



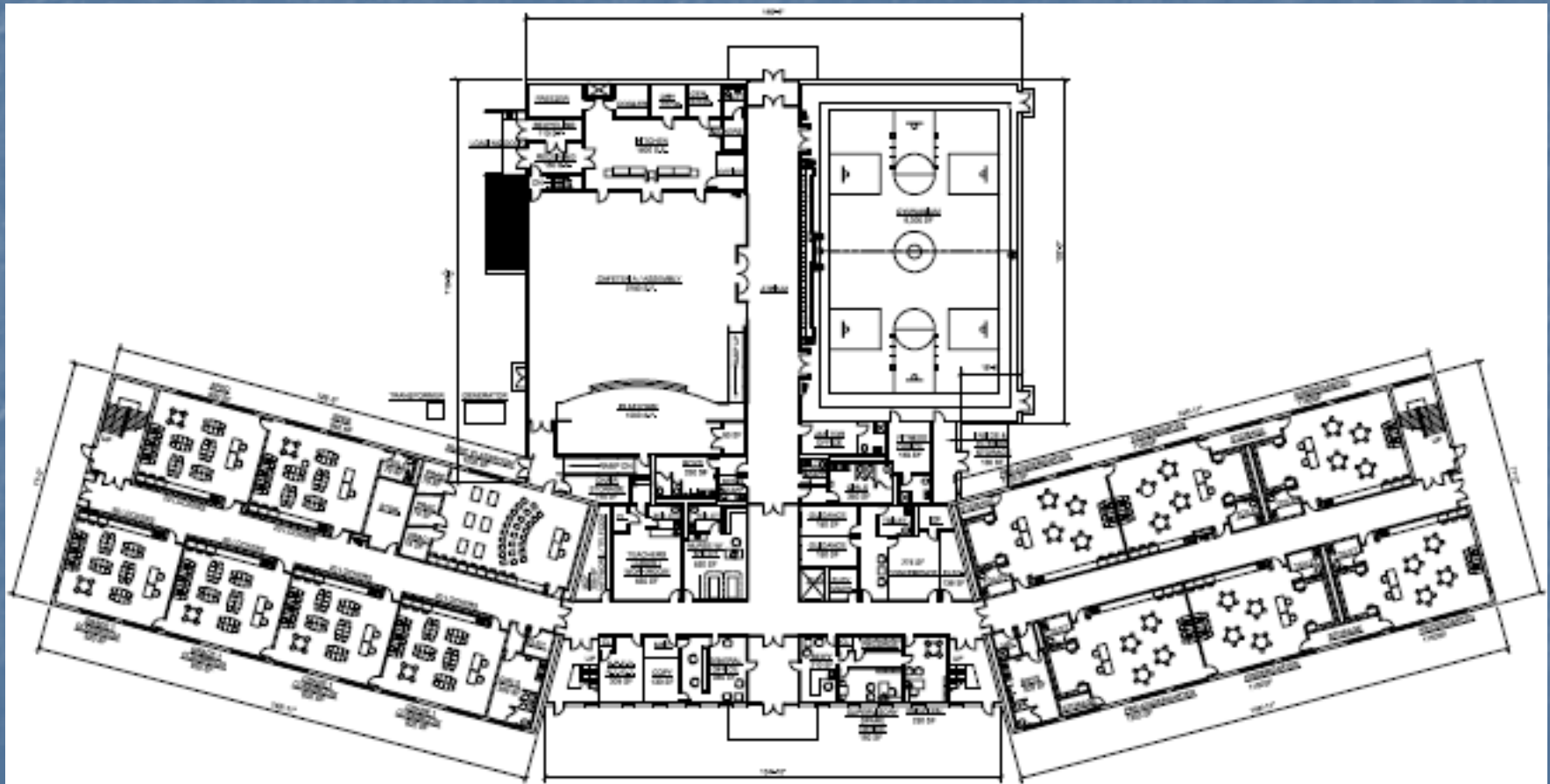
Burlington – Memorial ES

- 48,225 Sq. Ft.
- Built in 1954
- Grades K-5
- Enrollment: 500
- Category: Preferred Schematic for new Construction
- District total project budget: \$27,923,244
- Reimbursement Rate: 52.11%
- Approximate total grant amount: \$14,050,000

Burlington – Memorial ES



Burlington – Memorial ES



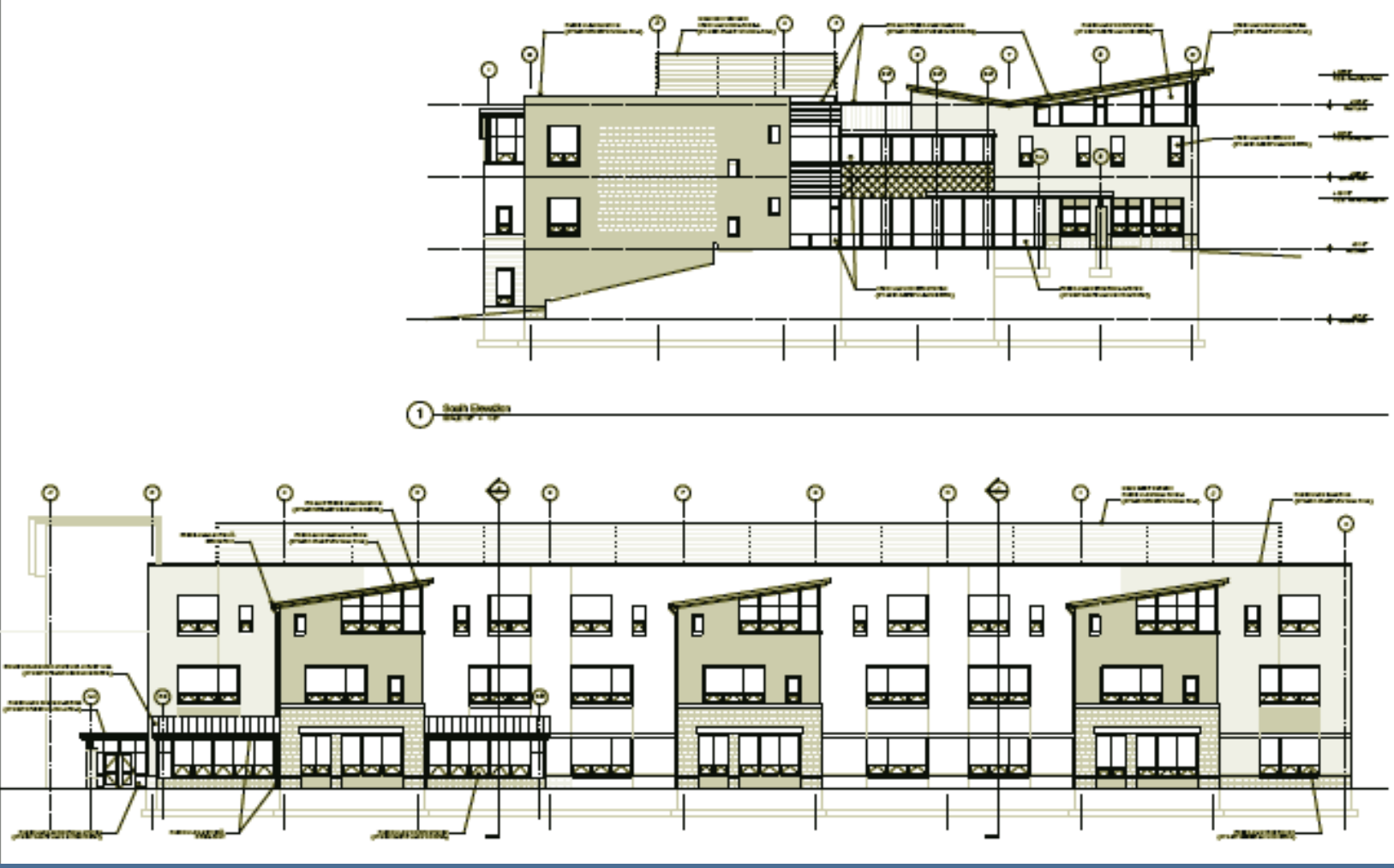
Middleton – Howe-Manning ES

- 40,400 Sq. Ft.
- Built in 1937
- Grades 4-6
- Enrollment: 553
- Category: Preferred Schematic for new Construction
- District total project budget: \$31,392,734
- Reimbursement Rate: 51.47%
- Approximate total grant amount: \$15,500,000

Middleton – Howe-Manning ES



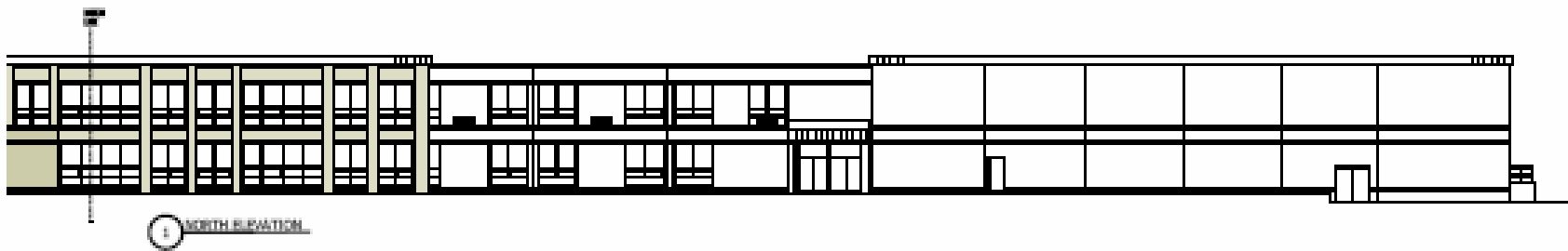
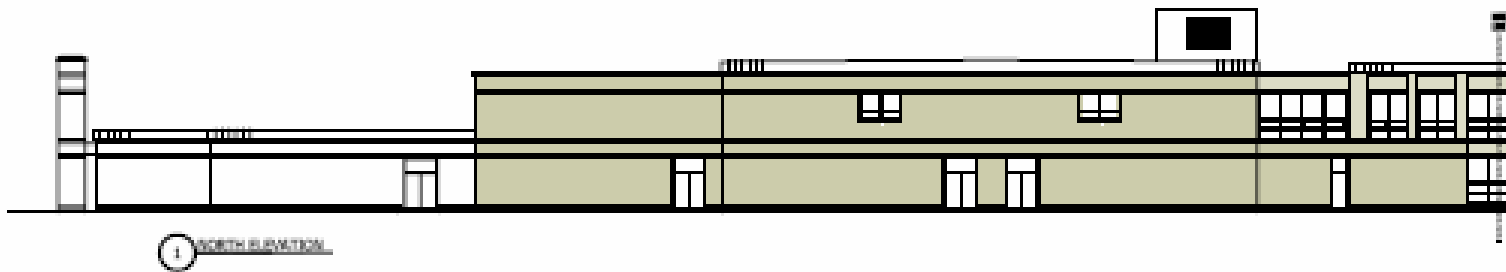
Middleton – Howe-Manning ES



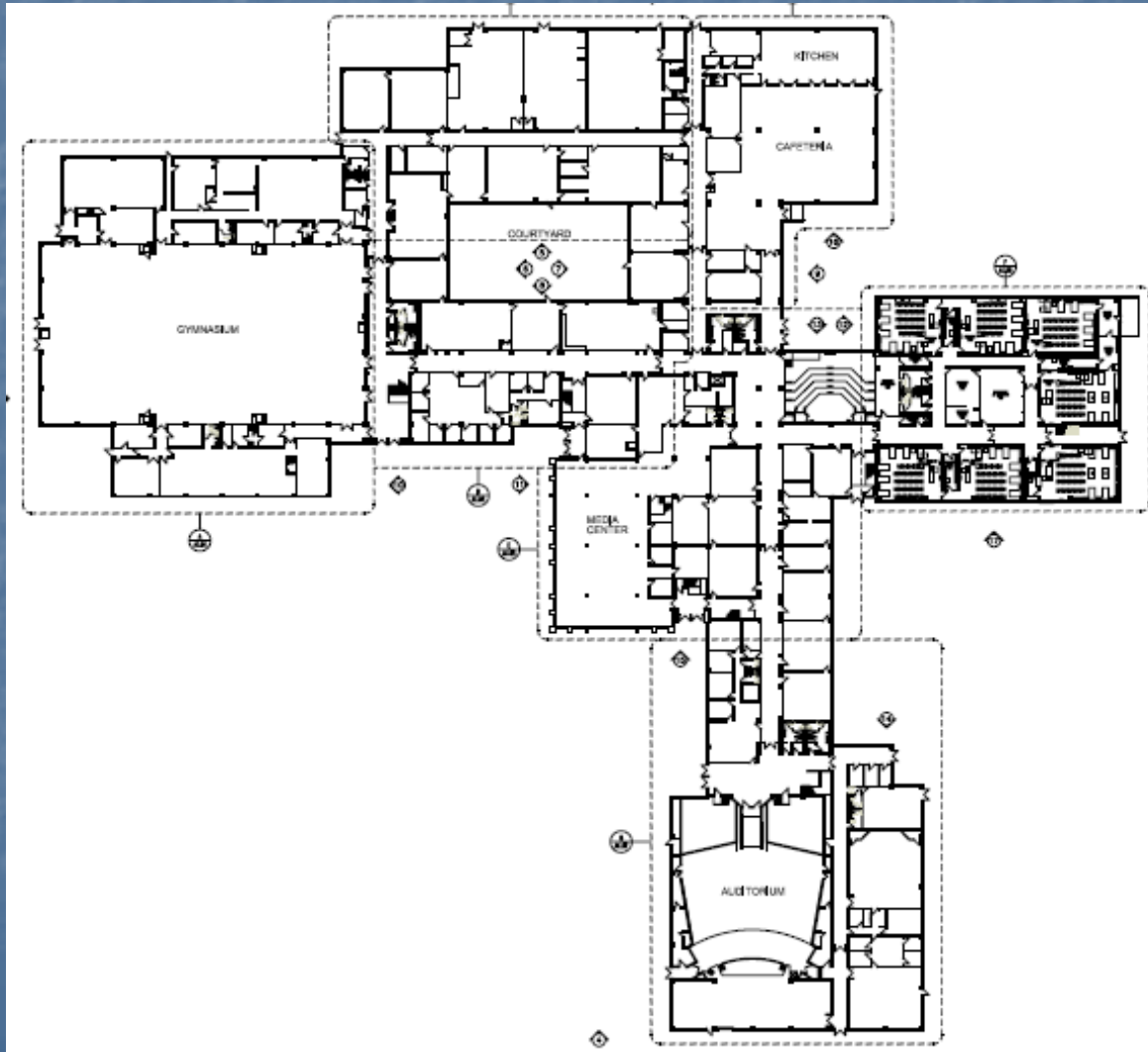
Foxborough HS

- 218,500 Sq. Ft.
- Built in 1972
- Grades 9-12
- Enrollment: 885
- Category: Repair
- District total project budget: \$19,993,000
- Reimbursement Rate: 49.31%
- Approximate total grant amount: \$9,387,000

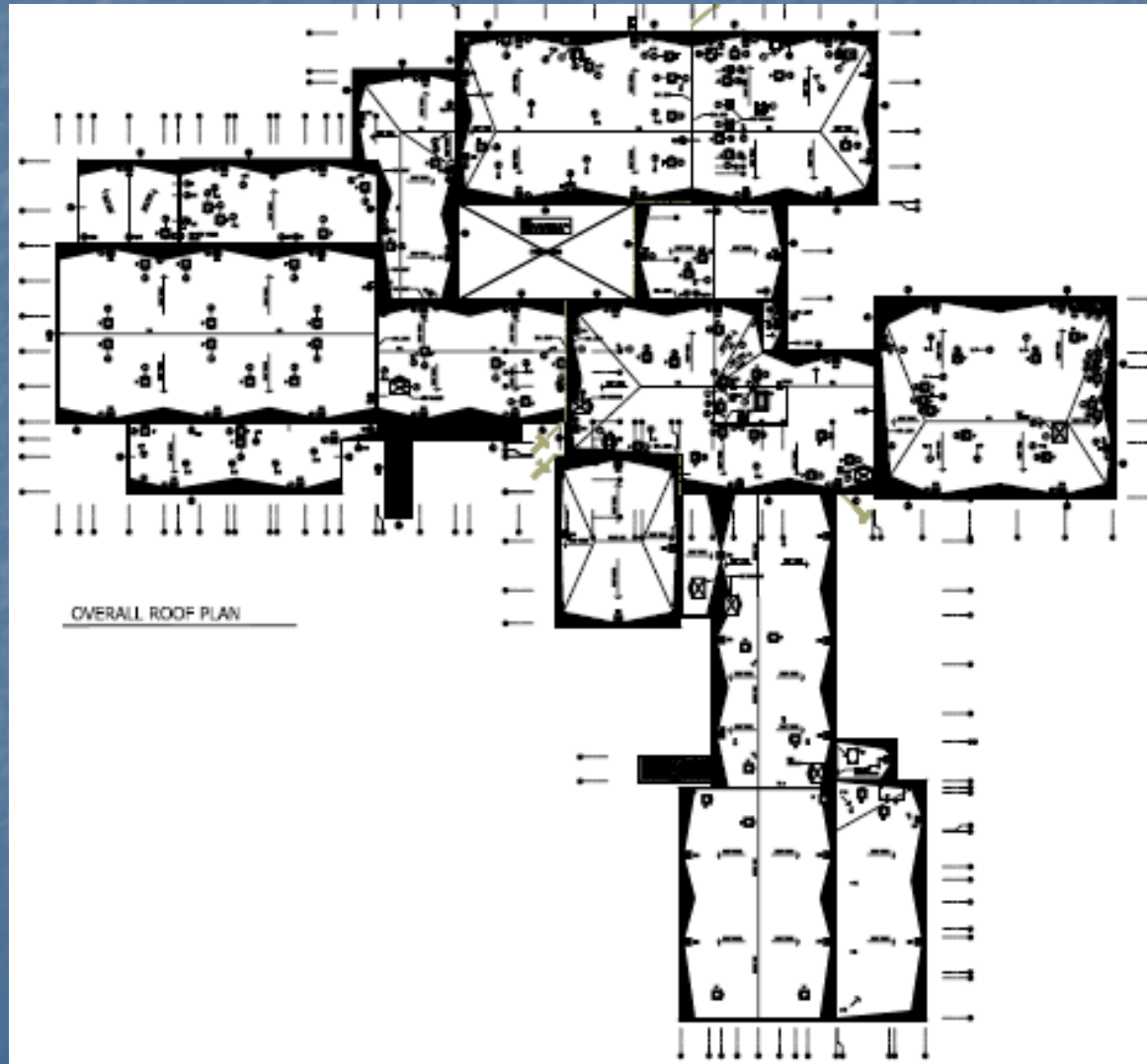
Foxborough HS



Foxborough HS



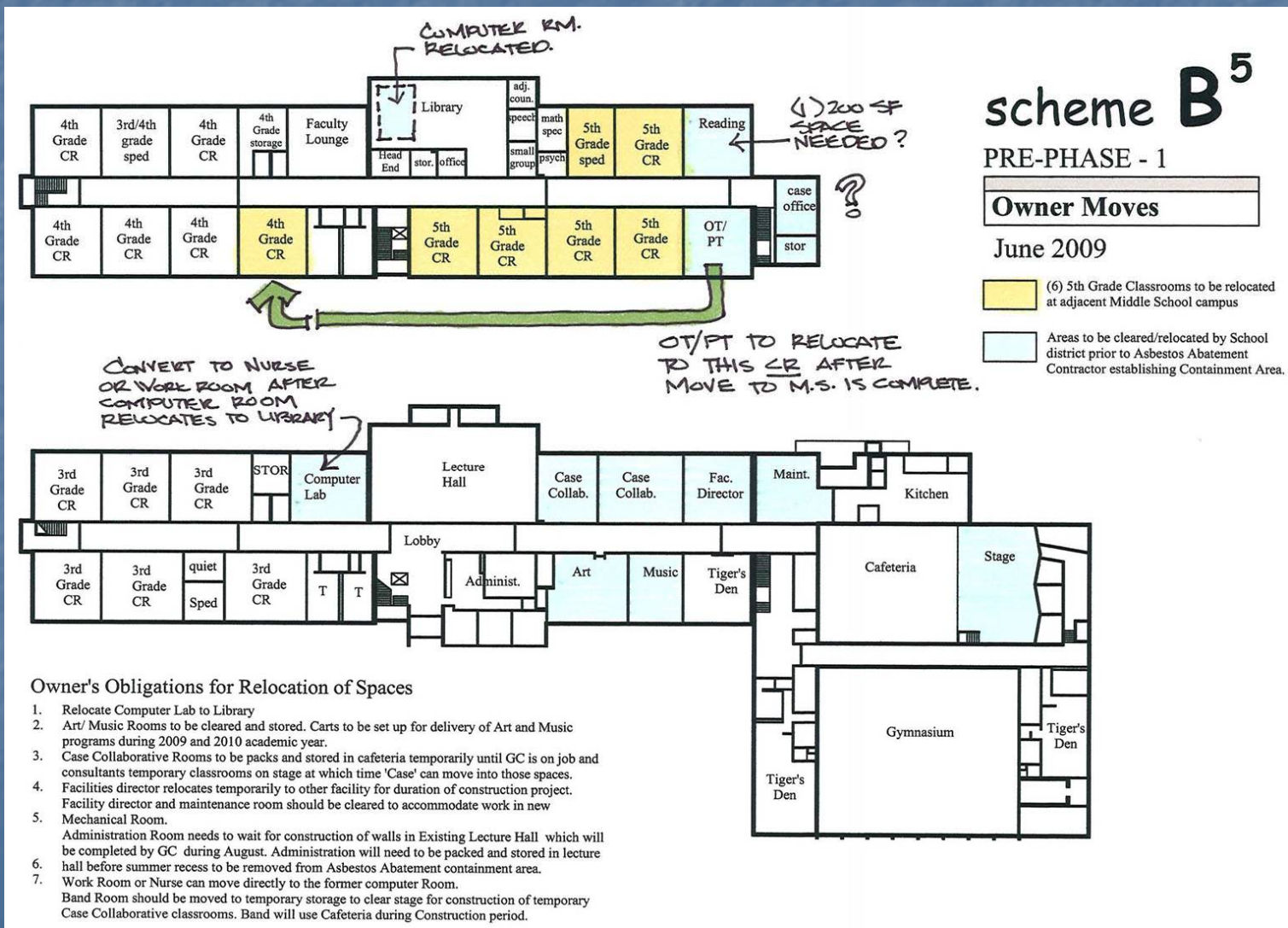
Foxborough HS



Littleton – Russell Street ES

- 72,000 Sq. Ft.
- Built in 1968
- Grades 3-5
- Enrollment: 389
- Category: Repair
- District total project budget: \$15,131,820
- Reimbursement Rate: 47.84%
- Approximate total grant amount: \$7,050,000

Littleton – Russell Street ES



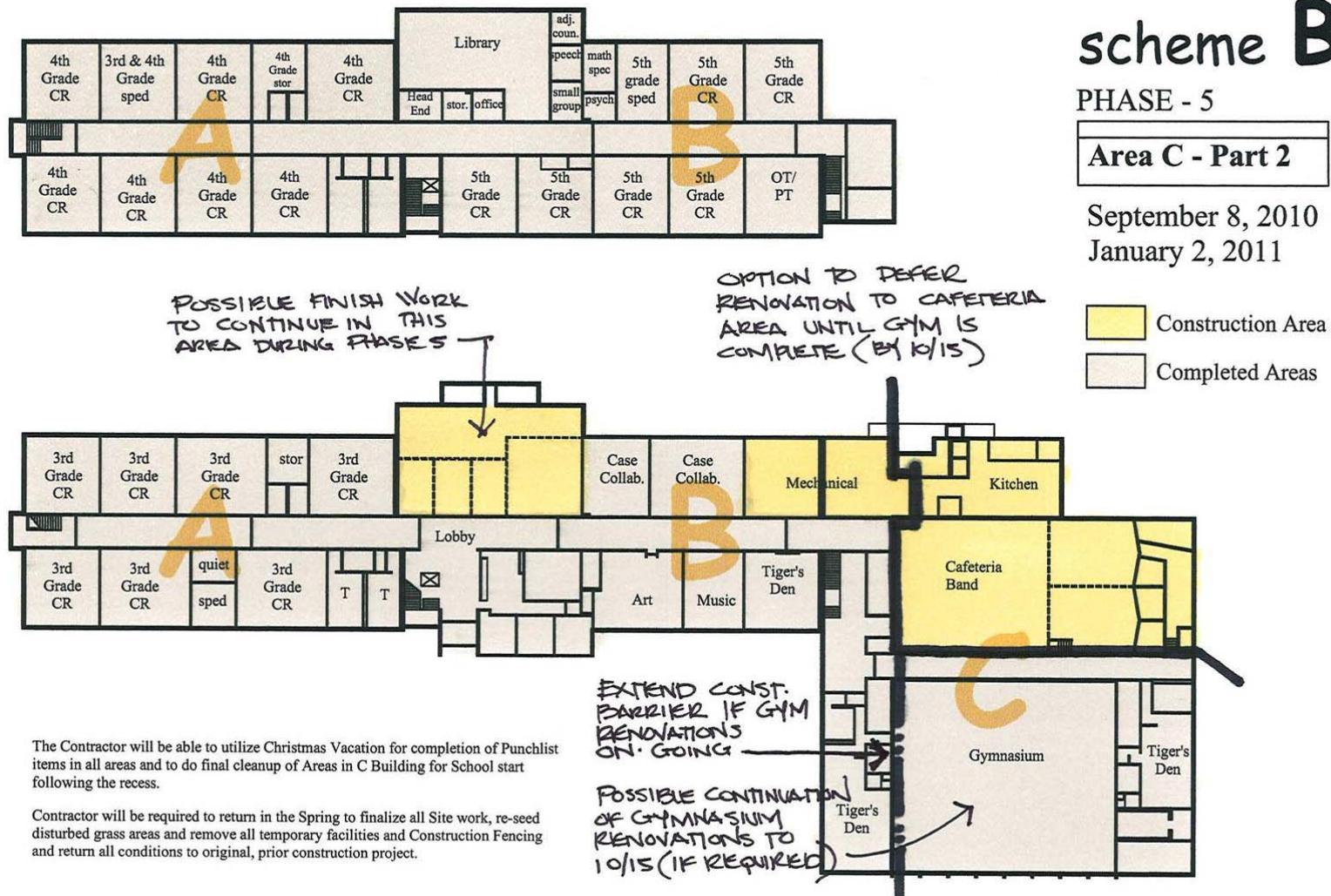
Littleton – Russell Street ES

scheme **B⁵**

PHASE - 5

Area C - Part 2

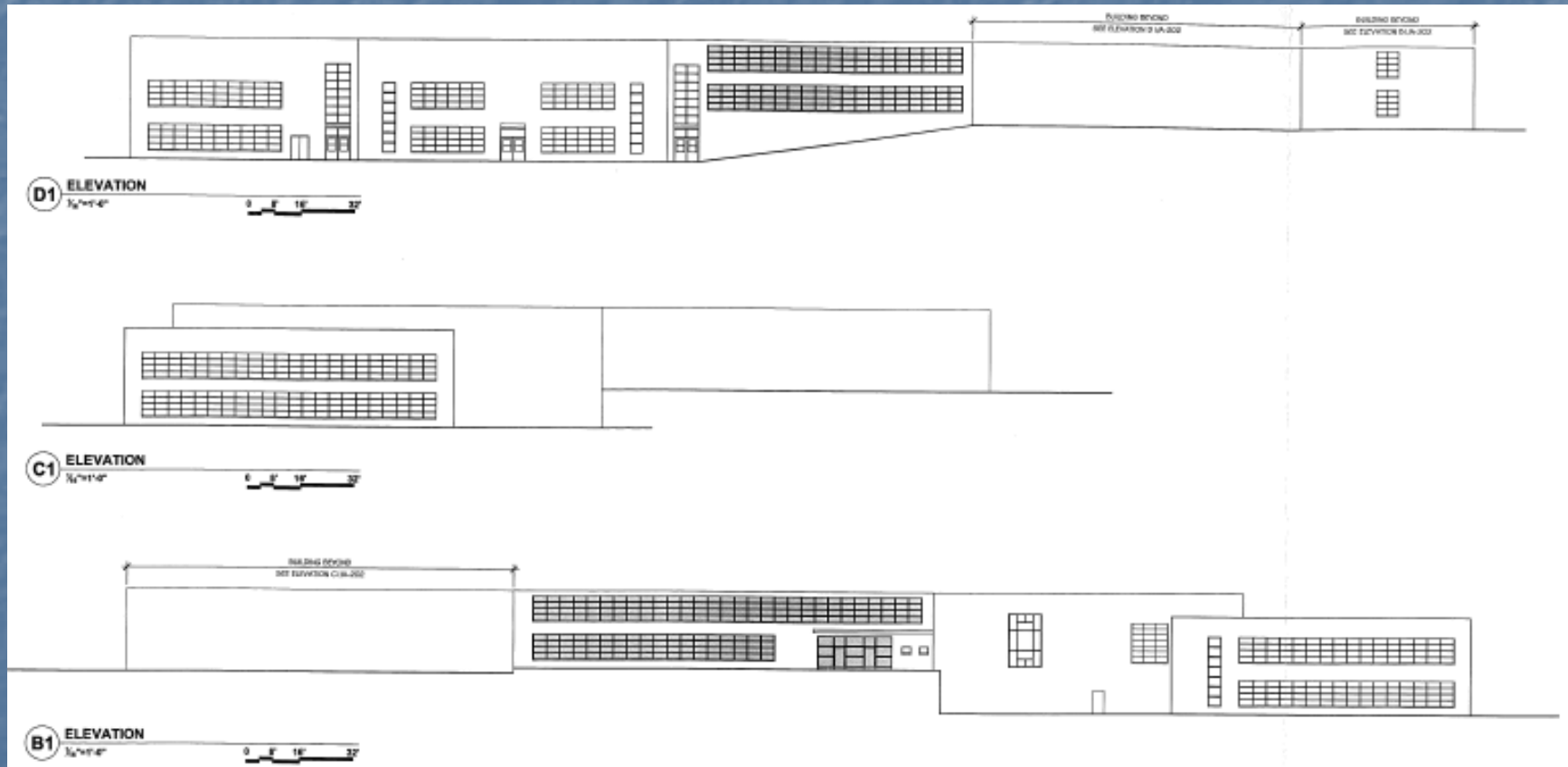
September 8, 2010 thru
January 2, 2011



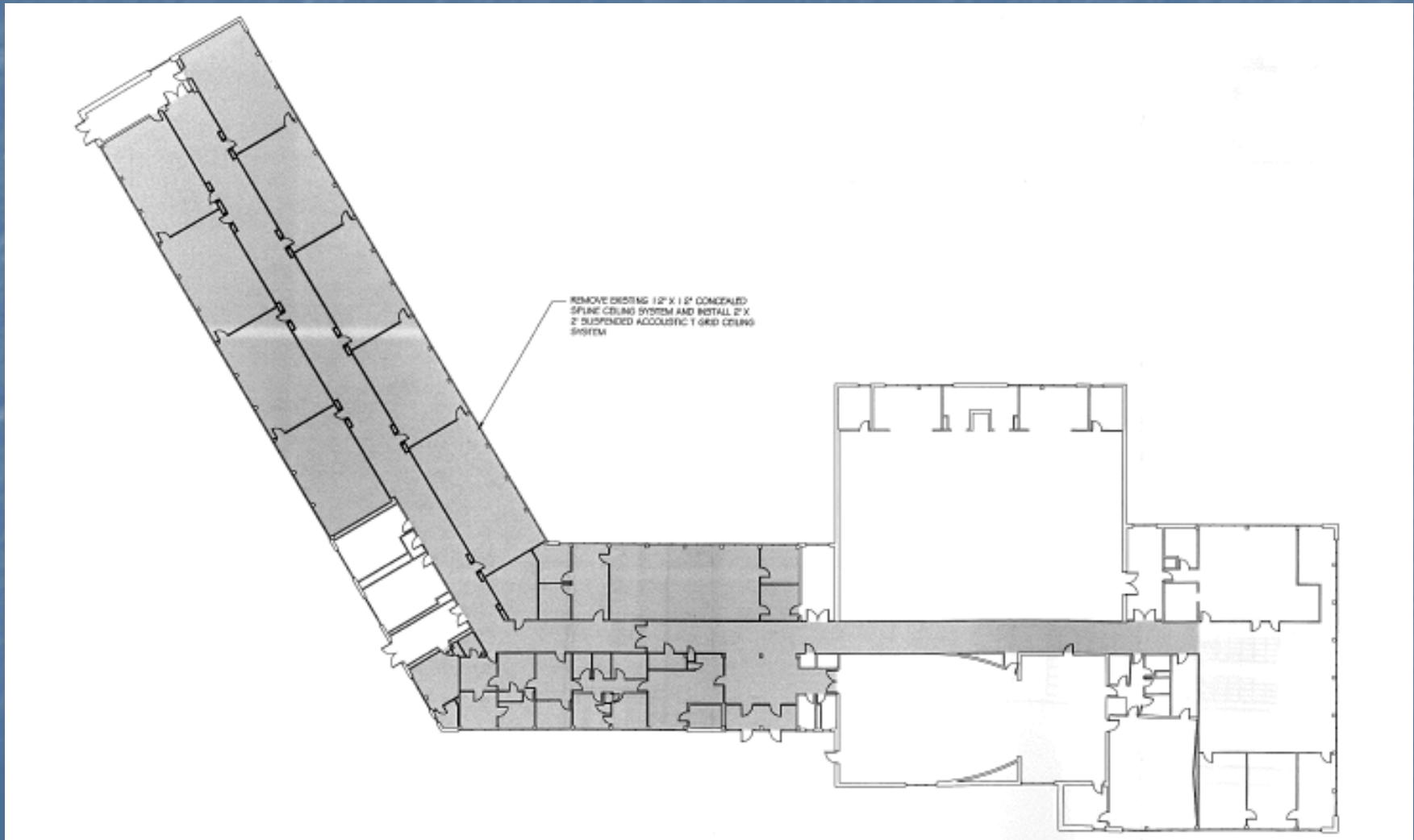
Braintree – South MS

- 72,041 Sq. Ft.
- Built in 1956
- Grades 6-8
- Enrollment: 523
- Category: Repair
- District total project budget: \$3,053,701
- Reimbursement Rate: 48.47%
- Approximate total grant amount: \$1,480,000

Braintree – South MS



Braintree – South MS



Vote to Move to Feasibility Study

District	School	Square Footage	Age
Arlington	Thompson ES (K-5)	55,861	1955
Whitman-Hanson	Maquan ES (PK-2)	76,000	1963

Vote to Move 2009 SOIs into Repair Category

District	School	Square Footage	Age	Request
Ashland	David Mindess ES (3-5)	96,000	1954	Roof Replacement
North Attleborough	Joseph W. Martin ES (K-5)	77,000	1967	Roof Replacement
Dartmouth	James Quinn ES (K-5)	122,000	1967	Window Replacement
Quabbin	Oakham Center (K-5)	46,000	1977	Roof Replacement