



# Board Meeting

September 30, 2009

**Massachusetts School Building Authority**

# Project Scope & Budget Totals

Total Number of Districts	School Type	Total 2008/2009 Enrollment	Total Projected Enrollment	Total Existing Sq. Ft.	Total Projected Sq. Ft.	Original Submission of Total Project Budget	District's Total Project Budget	Total of MSBA Facility Grant Basis	Total Approximate Grant Amount
15	9 Elementary 3 Middle School 3 High School	10,500	9,670	1,580,444	2,000,168	\$680,142,253	\$660,808,306	\$597,391,240	\$321,127,287

# Vote to Move to Project Scope & Budget

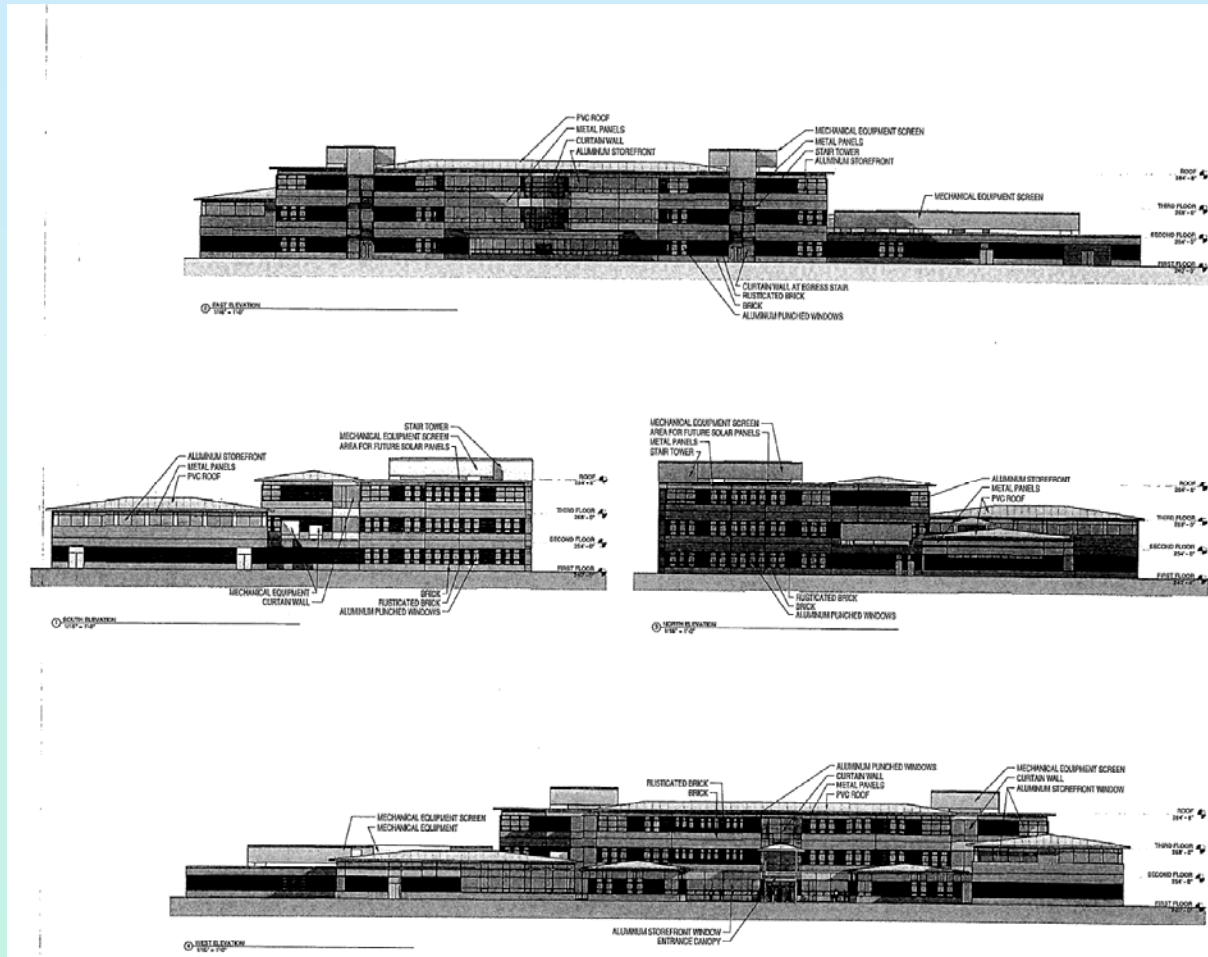
				10,500	9,670	1,580,444	2,000,168		680,142,253	660,808,306	597,391,240		321,127,287
District	School	Age of Ex. Bld.	Gr.	2008/9 Enroll	Pro. Enroll	Ex. Sq. Ft.	Pro. Sq. Ft.	Pre. Schematic	Original Sub. of Total Project Budget	District Total Project Budget	MSBA Total Facility Grant Basis	Reim. Rate	Approx. Total Grant Amount
Billerica	Parker ES	1953	K-5	397	500	~45,000	90,600	New	\$37,780,000	\$34,007,436	\$ 31,565,064	55.69%	\$ 17,578,584
Brookline	John Runkle ES	1962	K-8	487	560	133,000	104,800	Add/Reno	\$30,000,000	\$29,840,131	\$ 28,515,877	41.58%	\$ 11,856,902
Chelmsford	McCarthy Parker MS	1959	6-8	1704	N/A	143,000	143,000	Add/Reno	\$13,405,225	\$13,405,225	\$13,405,225	54.31%	\$ 7,280,337
Danvers	High School	1960	9-12	985	1000	253,899	249,792	Add/Reno	\$82,241,576	\$83,063,992	\$74,893,855	56.11%	\$ 42,022,942
Dedham	Avery ES	1921	1-5	211	310	36,000	61,000	New	\$24,134,491	\$23,366,740	\$ 21,806,569	50.84%	\$ 11,086,460
Hamilton-Wenhan	Cutler ES	1952	K-5	298	N/A	45,000	45,000	HVAC Upgrade	\$1,531,720	\$1,531,720	\$ 1,531,720	42.58%	\$ 652,206
Nashoba	Pompo. ES	1954	K-2	270	600	40,115	98,030	Add/Reno - combined school - K-5	\$38,636,795	\$38,420,499	\$35,658,326	50.85%	\$18,132,259

# Vote to Move to Project Scope & Budget

District	School	Age of Ex. Bld.	Gr.	2008/9 Enrol I	Pro. Enroll	Ex Sq Ft	Pro. Square Footage	Preferred Schematic	Original Sub. of Total Project Budget	District Total Project Budget	MSBA Total Facility Grant Basis	Reim. Rate	Approximate Total Grant Amount
Needham	Newman ES	1961	K-5	754	N/A	119,264	119,264	Repair: HVAC, Elect. Roof, ADA	\$27,676,934	\$ 27,412,128	\$ 21,497,319	40.00%	\$ 8,598,927
Norfolk	Freeman-Centennial ES	1950	1-6	563	585	80,328	96,410	New	\$39,788,041	\$ 37,543,029	\$ 32,500,093	53.16%	\$ 17,277,050
Plymouth	North HS	1963	9-12	1054	1350	155,000	267,357	Model School	\$92,249,040	\$ 92,249,040	\$ 79,420,894	58.24%	\$ 46,254,729
Rochester	Memorial ES	1953	K-6	575	635	71,000	105,023	Add/reno	\$26,500,000	\$ 26,500,000	\$ 25,268,708	57.94%	\$ 14,640,689
Rockland	John W Rogers MS	1928	6-8	565	775 MS 750 HS	71,495	New - 109,500 Reno - 158,606	New MS plus reno to HS	\$86,201,449	\$ 86,201,449	\$ 83,032,496	64.26%	\$ 53,356,682
Sharon	Middle School	1963	6-8	860	845	116,343	170,750	Add/Reno	\$51,297,646	\$ 49,540,287	\$ 43,950,340	52.68%	\$ 23,153,039
Sturbridge	Burgess ES	1949	K-6	889	860	109,000	129,300	Add/Reno	\$46,926,630	\$ 46,926,630	\$ 41,844,754	57.92%	\$ 24,236,481
Wayland	High School	1959	9-12	888	900	162,000	171,000	New w/Reno of field house	\$81,772,706	\$ 70,800,000	\$ 62,500,000	40.00%	\$ 25,000,000



# Billerica – Parker Elementary School

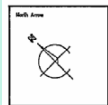
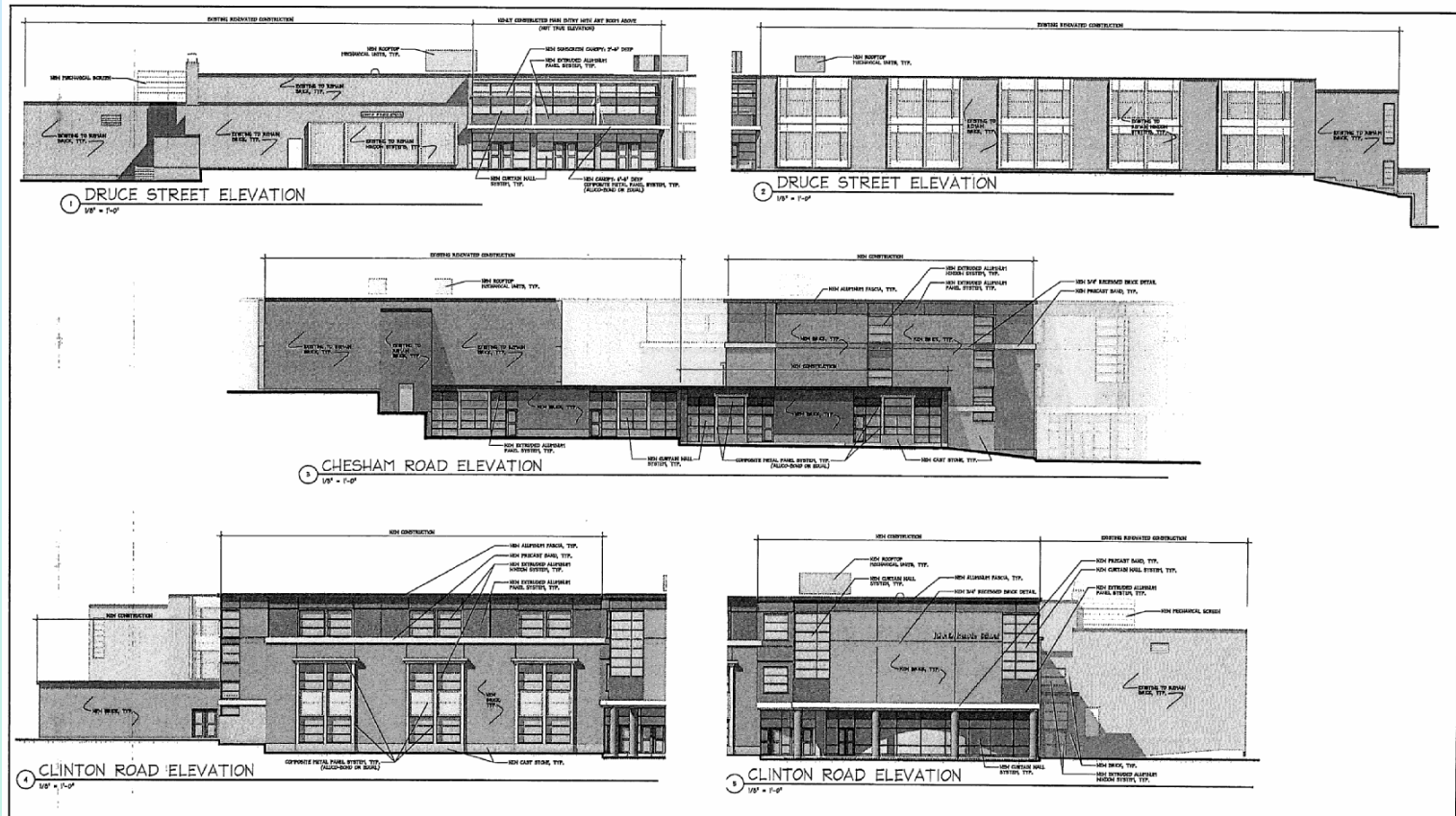




# Billerica – Parker Elementary School

- Built in 1953
- New Construction: 90,600 sf
- Grades: K-5
- Projected Enrollment: 500
- Category: Project Scope & Budget
- District Total Project Budget: \$34,007,436
- Reimbursement Rate: 55.69%
- Basis of Maximum Total Grant Amt: \$31,565,064
- MSBA Maximum Grant Amount: \$17,578,584
- Town Meeting Vote: October 6, 2009
- Ballot Vote: November 3, 2009

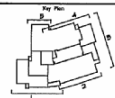
# Brookline – John Runkle Elementary School



**Designpartnership**  
OF CAMBRIDGE INC.

WOOD BUSINESS PARK  
500 BUTTRICKS AVENUE  
CHARLESTOWN, MA 02129  
T 617.241.0800, F 617.241.0149  
WWW.DPINC.COM

ARCHITECTURE  
PROGRAMMING  
MASTER PLANNING  
INTERIOR DESIGN



John D. Runkle  
School

---

Brookline, MA

Drawn by: AN  
Checked by: DM  
Date: 10/14/09

Professional Seal

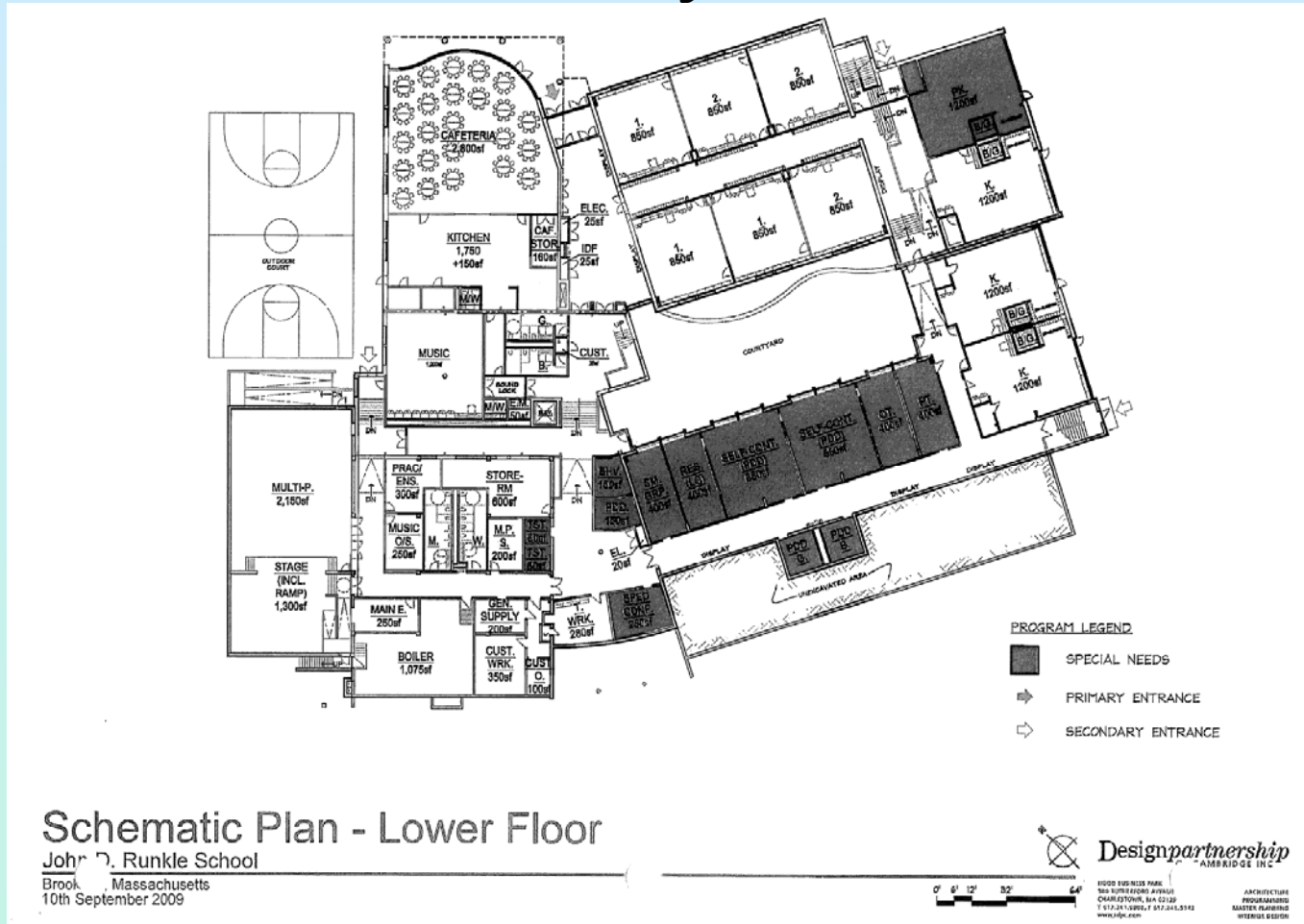
ELEVATIONS

---

**A3.1**



# Brookline – John Runkle Elementary School

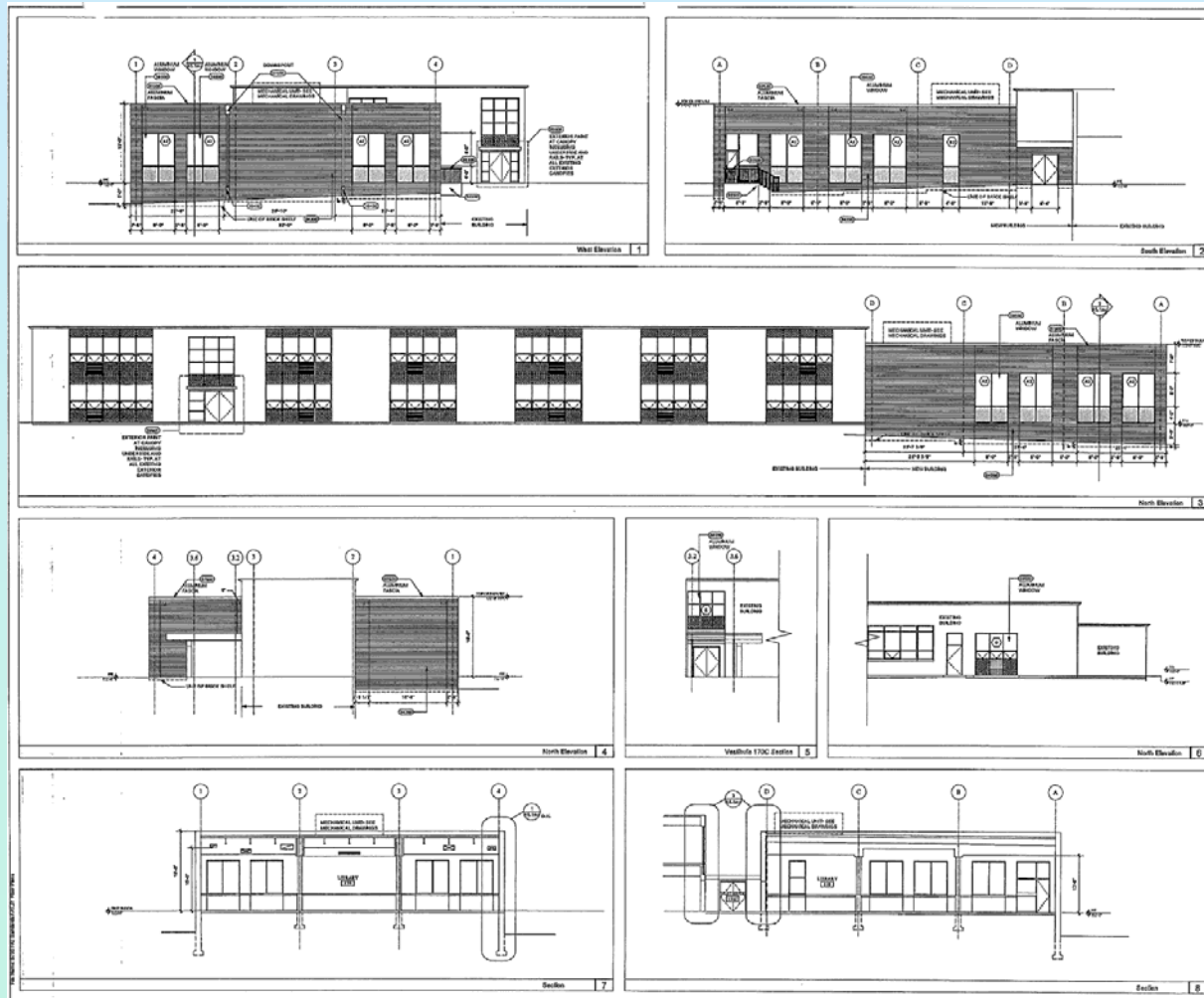


# Brookline – John Runkle Elementary School

- Built in 1962
- SF of Add/Reno: 104,800
- Grades: K-8
- Projected Enrollment: 560
- Category: Project Scope & Budget
- District Total Project Budget: \$29,840,131
- Reimbursement Rate: 41.58%
- Basis of Maximum Total Grant Amount: \$28,515,877
- MSBA Maximum Grant Amount: \$11,856,902
- Town Meeting Vote: November 17, 2009



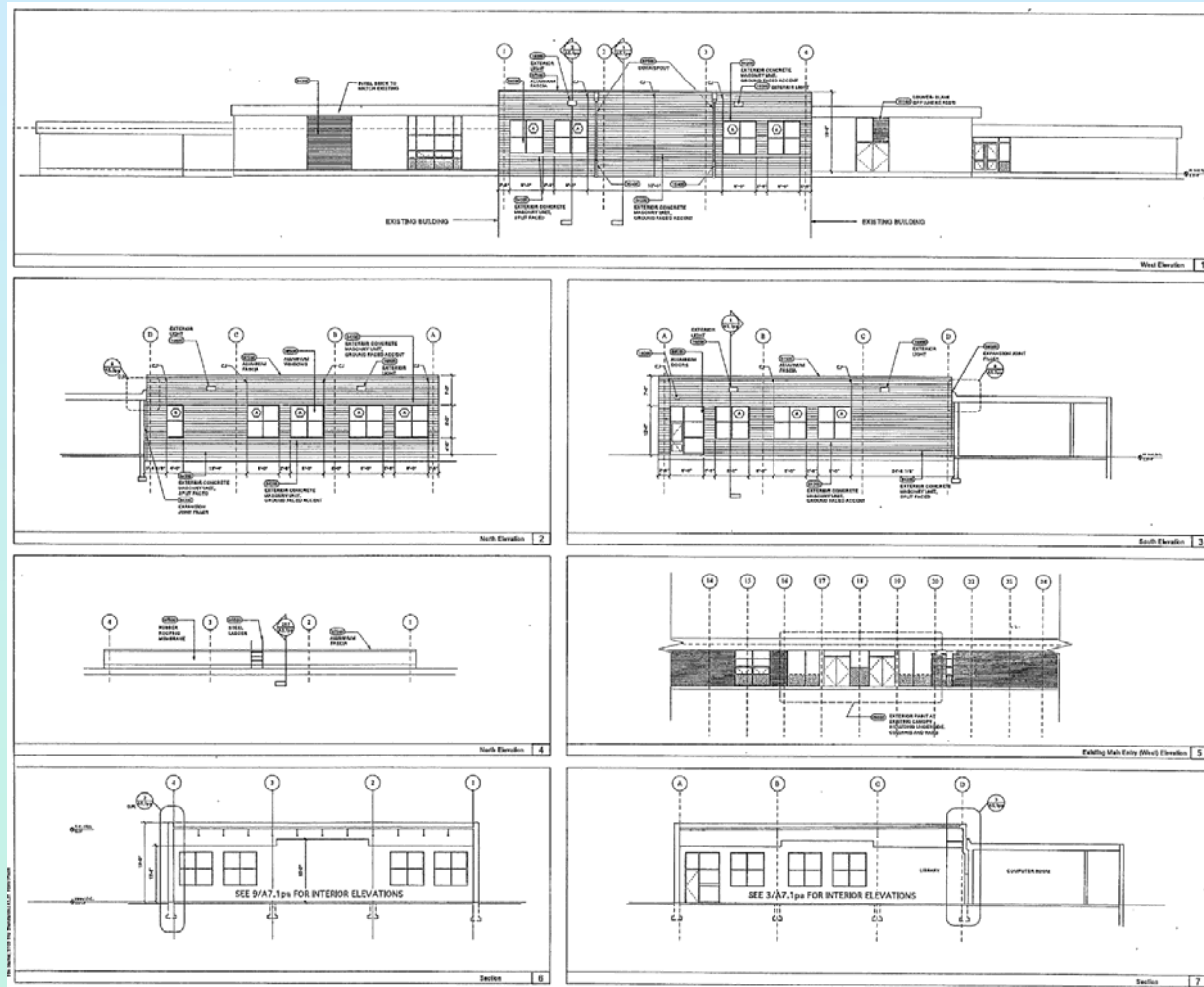
# Chelmsford – McCarthy / Parker Middle Schools







# Chelmsford – McCarthy Parker Middle Schools



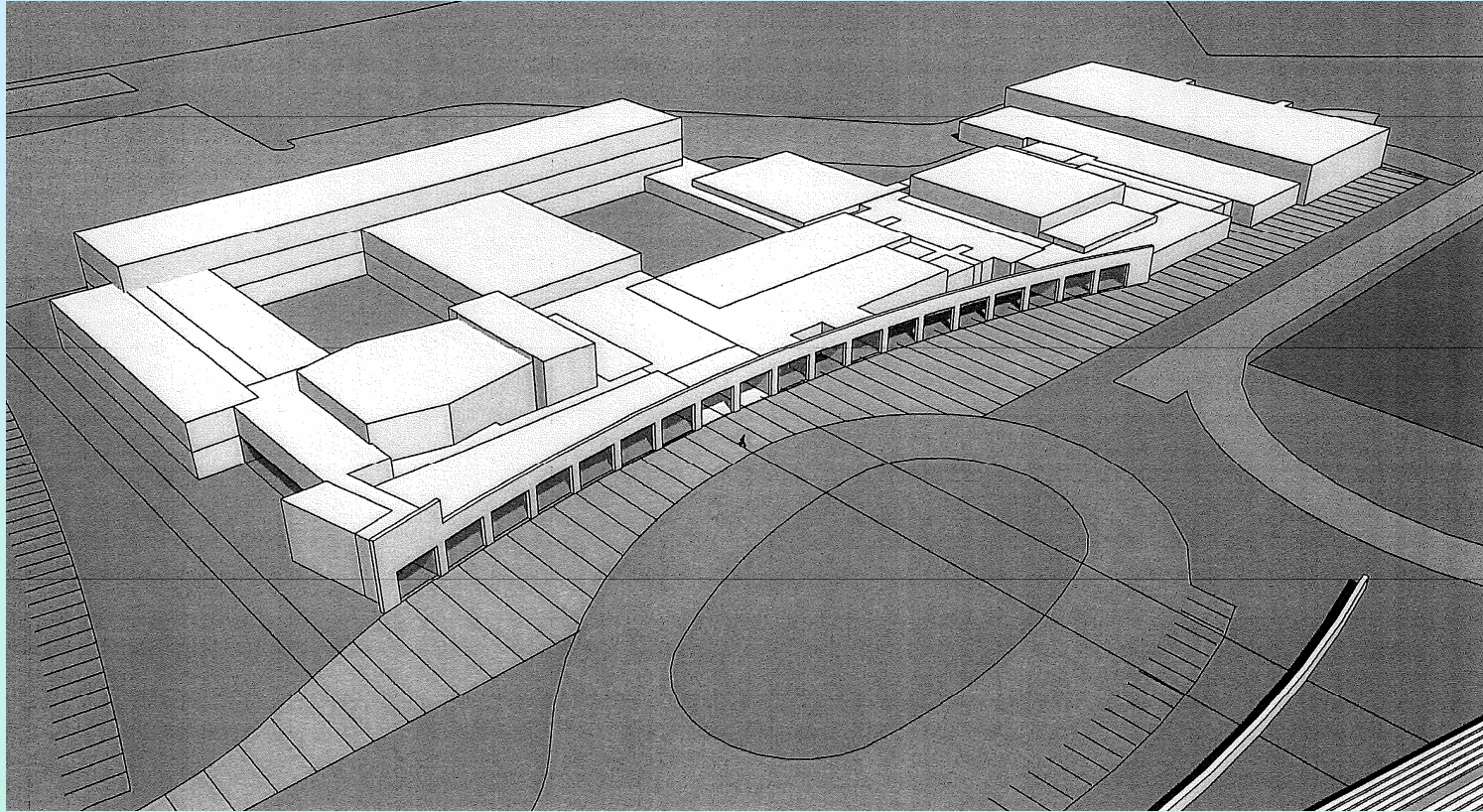
# Chelmsford – McCarthy / Parker Middle Schools

- Built in 1959
- SF of Add/Reno: 143,000 sf
- Grades: 6-8
- Projected Enrollment: N/A
- Category: Project Scope & Budget
- District Total Project Budget: \$13,405,225
- Reimbursement Rate: 54.31%
- Basis of Maximum Total Grant Amount: \$13,405,225
- MSBA Maximum Grant Amount: \$7,280,337





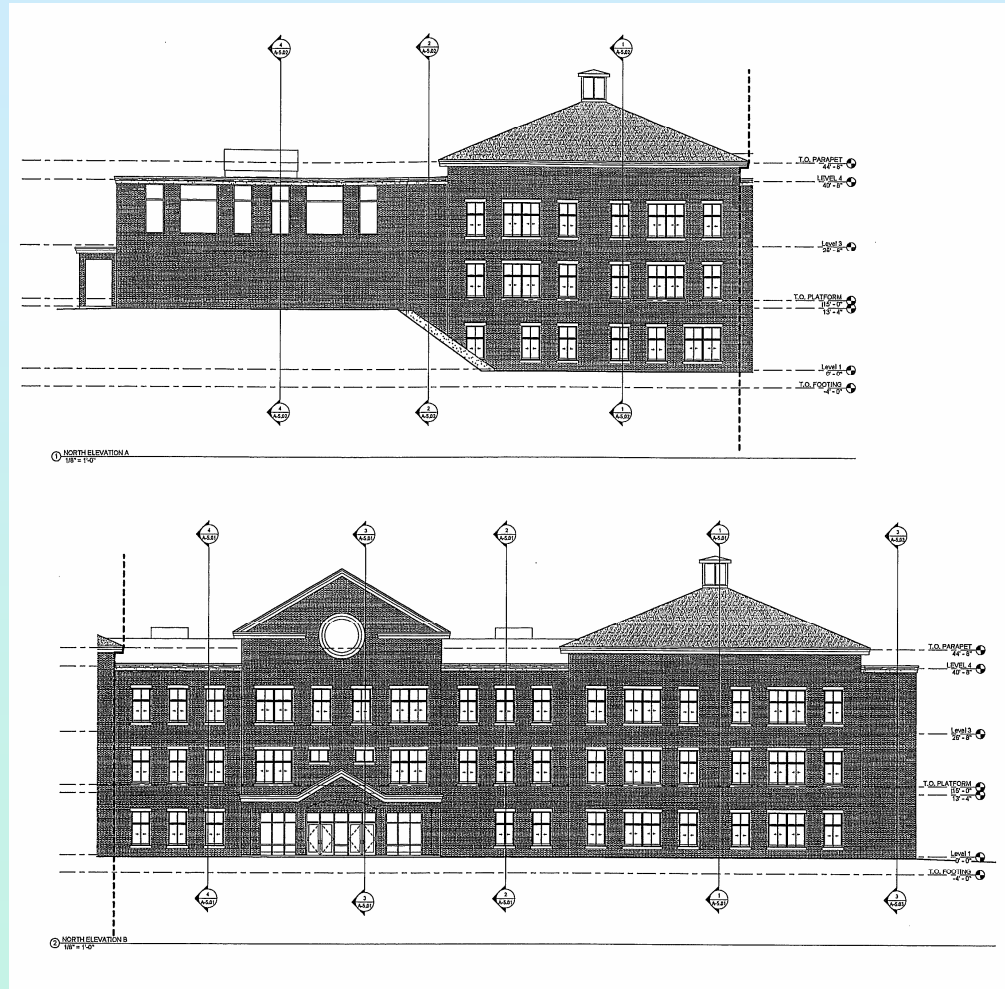
# Danvers – High School



# Danvers – Danvers High School

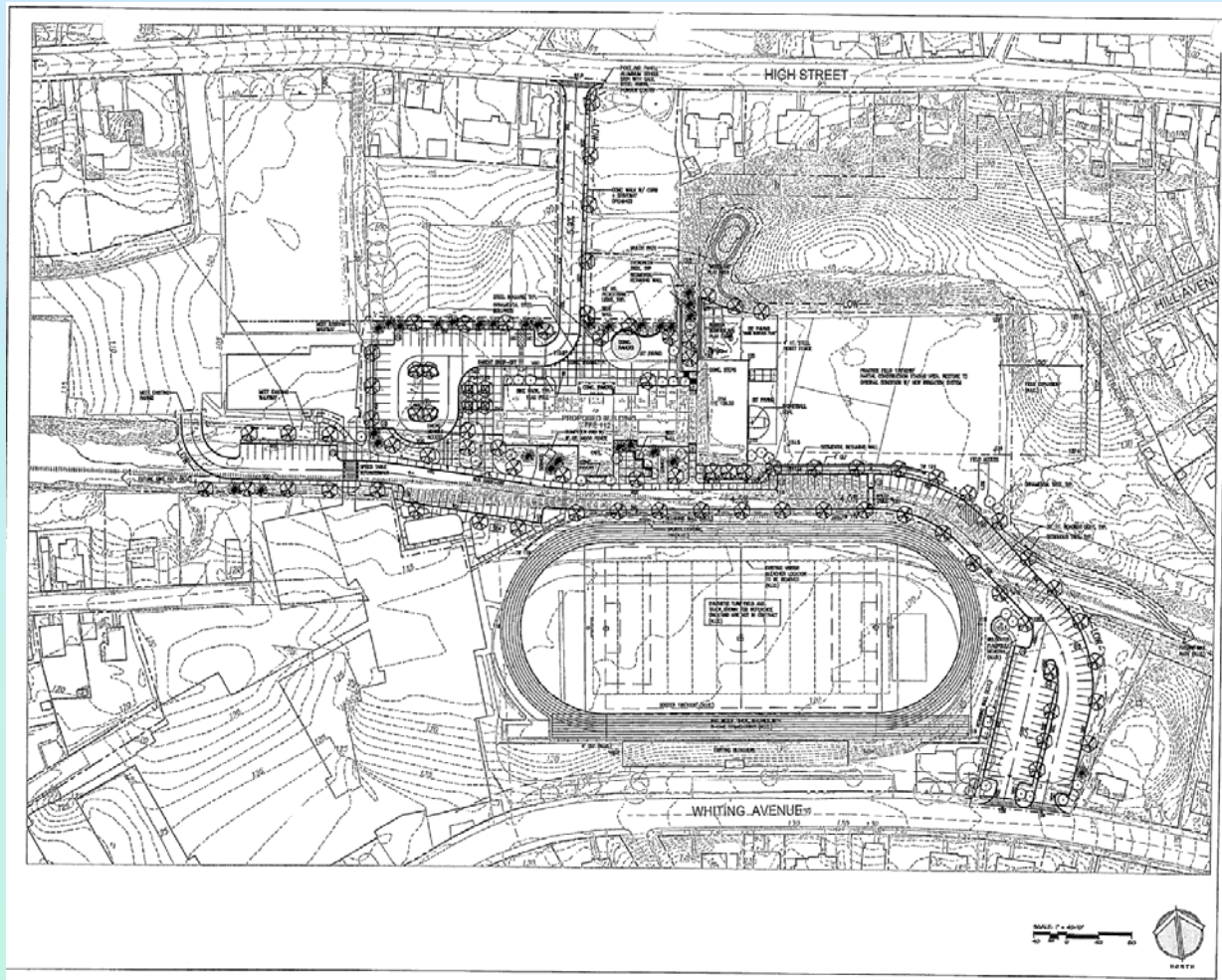
- Built in 1960
- SF of Add/Reno: 249,792 sf
- Grades: 9-12
- Projected Enrollment: 1000
- Category: Project Scope & Budget
- District Total Project Budget: \$83,063,992
- Reimbursement Rate: 56.11%
- Basis of Maximum Total Grant Amount: \$74,983,855
- MSBA Maximum Grant Amount: \$42,022,942
- Town Meeting Vote: November 16, 2009

# Dedham – Avery Elementary School





# Dedham – Avery Elementary School





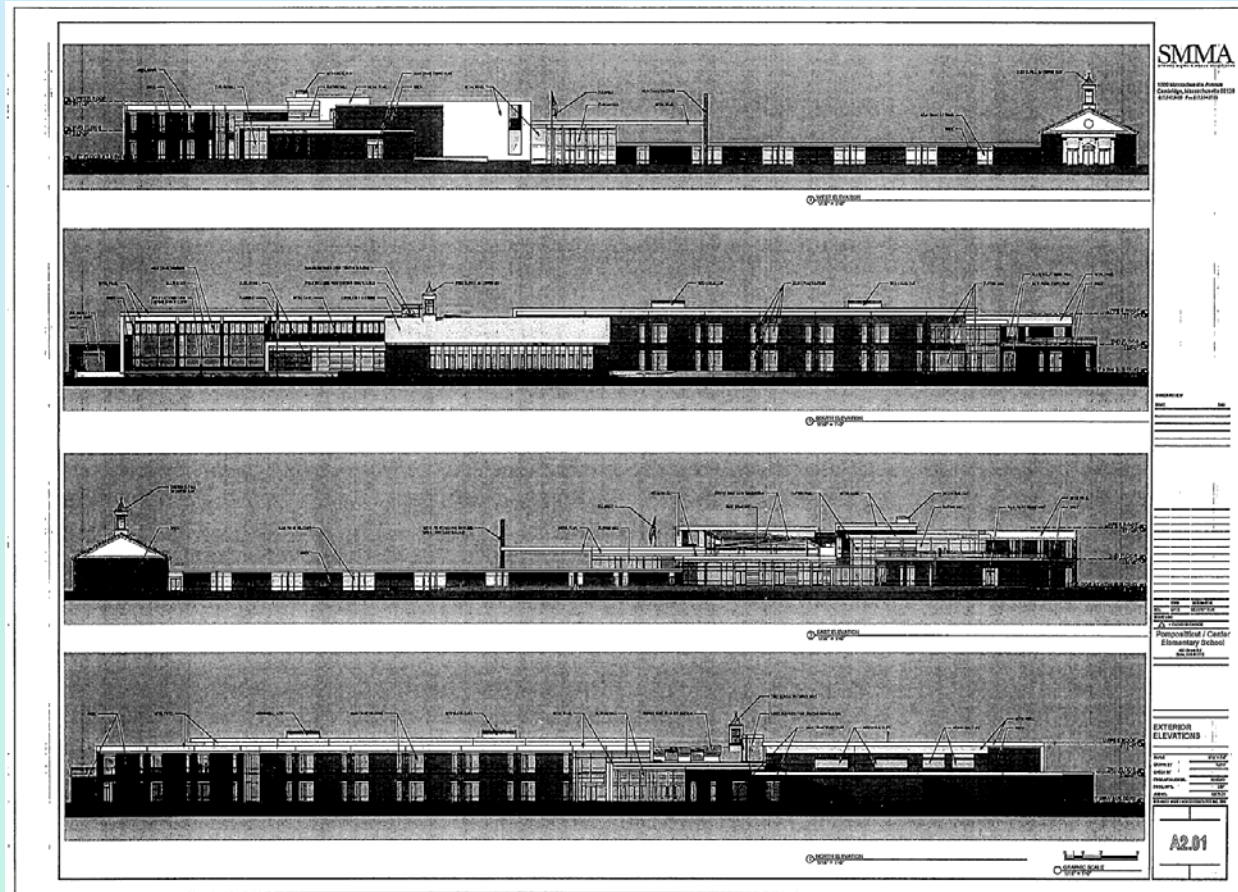
# Dedham – Avery Elementary School

- Built in 1921
- SF of New: 61,000 sf
- Grades: 1-5
- Projected Enrollment: 310
- Category: Project Scope & Budget
- District Total Project Budget: \$23,366,740
- Reimbursement Rate: 50.84%
- Basis of Maximum Total Grant Amount: \$21,806,569
- MSBA Maximum Grant Amount: \$ 11,086,460
- Town Meeting Vote: November 16, 2009
- Ballot Vote: January 2010

# Hamilton-Wenham – Cutler Elementary School

- Built in 1952
- Grades: K-5
- Projected Enrollment: N/A
- Category: Project Scope & Budget
- District Total Project Budget: \$1,531,720
- Reimbursement Rate: 42.58%
- Basis of Maximum Total Grant Amount: \$1,531,720
- MSBA Maximum Grant Amount: \$652,206
- Wenham Town Meeting Vote: October 13, 2009
- Hamilton Town Meeting Vote: October 17, 2009

# Nashoba – Pompositticut Elementary School



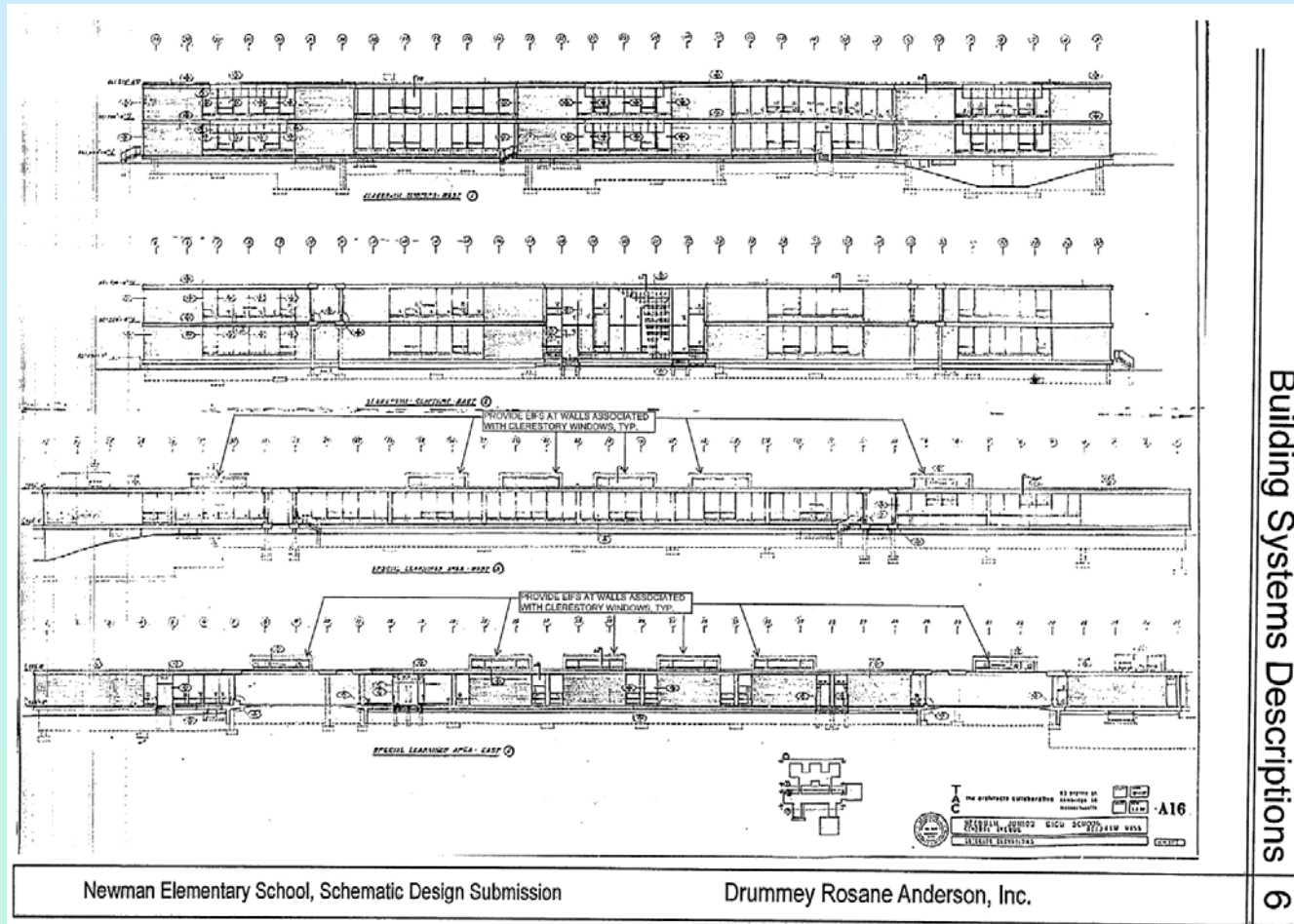


# Nashoba – Pompositticut Elementary School

- Built in 1954
- SF of Add/Reno Combined School: 98,030 sf
- Grades: K-5
- Projected Enrollment: 600
- Category: Project Scope & Budget
- District Total Project Budget: \$38,420,499
- Reimbursement Rate: 50.85%
- Basis of Maximum Total Grant Amount: \$35,658,326
- MSBA Maximum Grant Amount: \$ 18,132,259
- Town Meeting Vote: October 19, 2009
- Ballot Vote: October 29, 2009



# Needham – Newman Elementary School

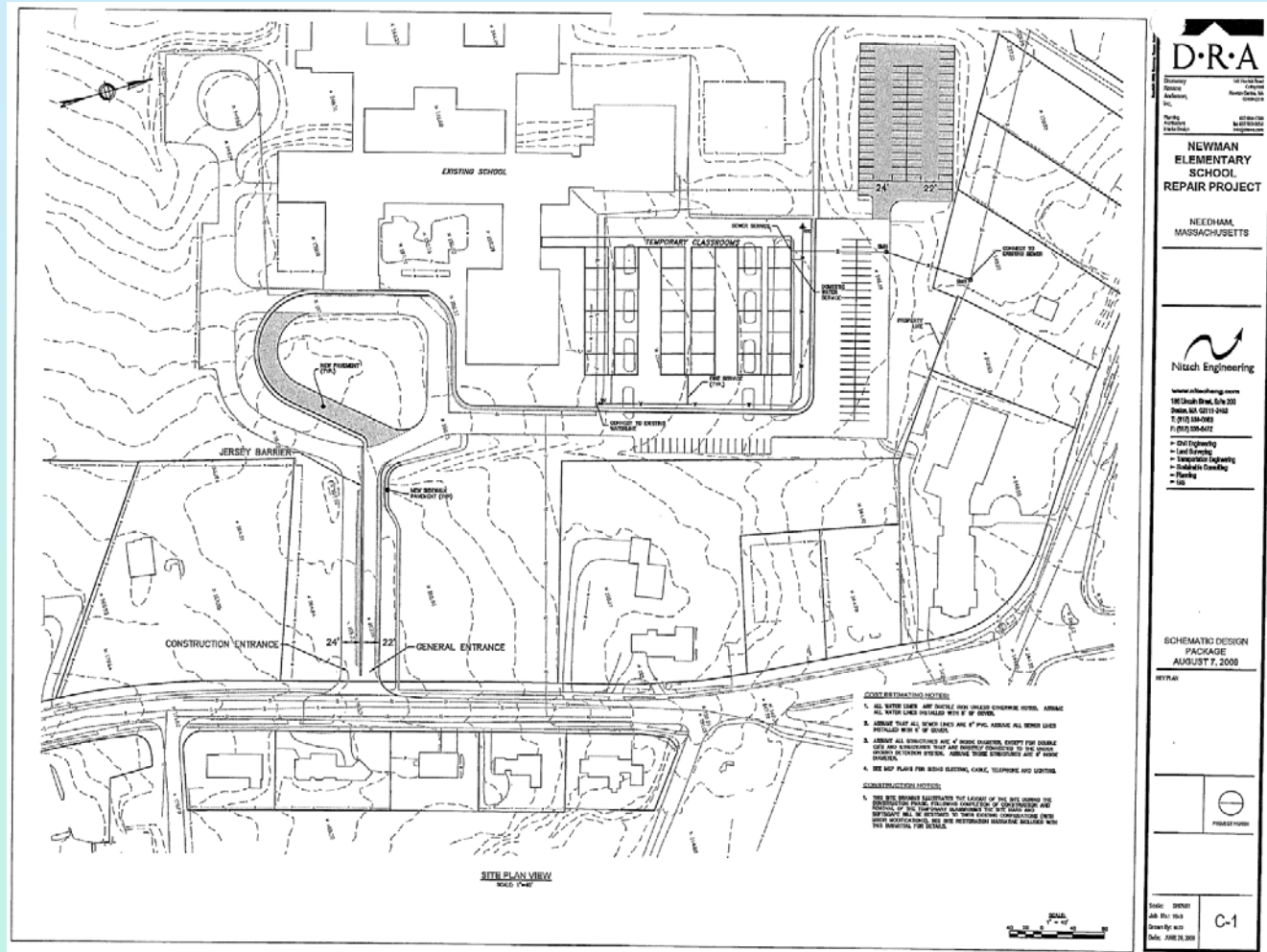


Building Systems Descriptions 6

Newman Elementary School, Schematic Design Submission

Drummey Rosane Anderson, Inc.

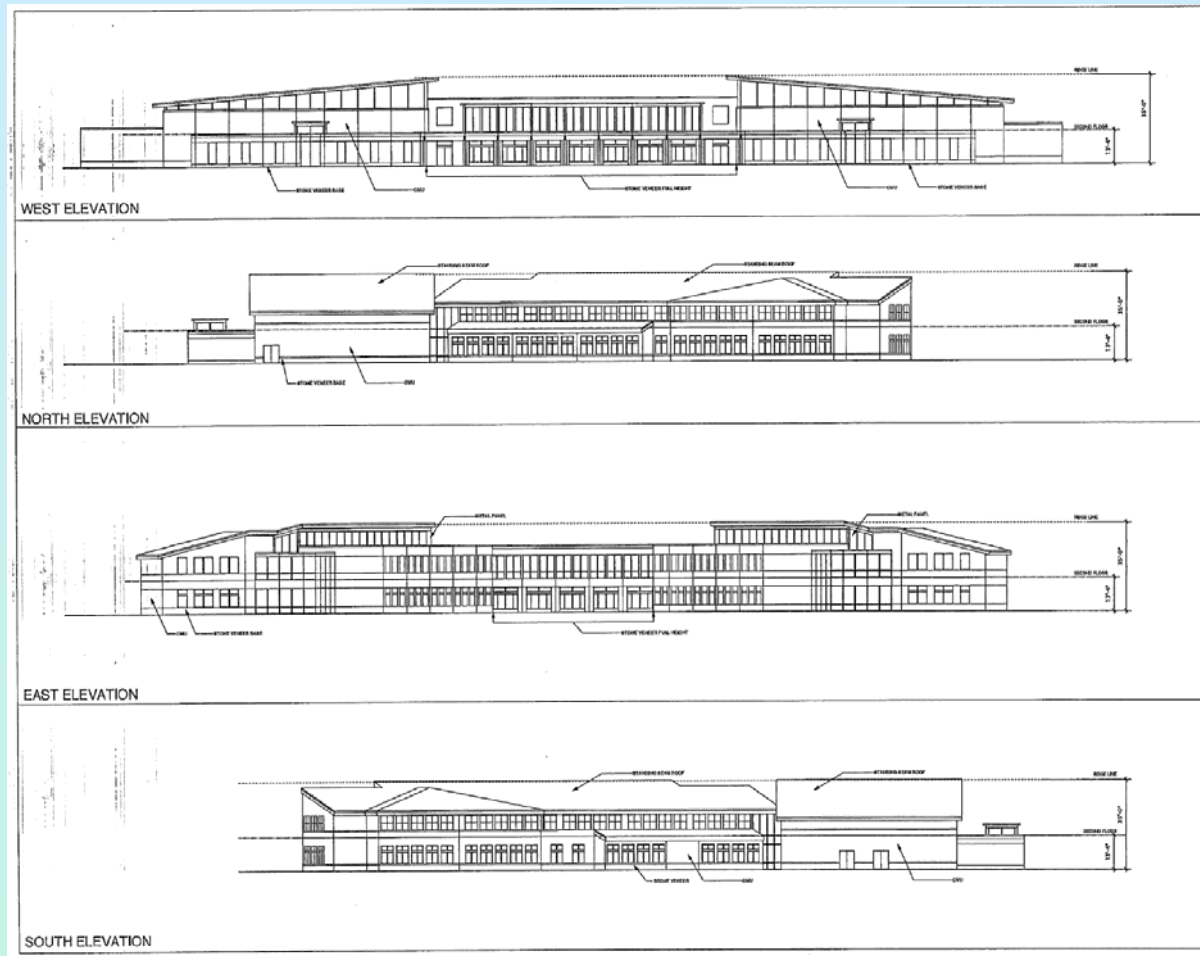
# Needham – Newman Elementary School



# Needham – Newman Elementary School

- Built in 1961
- Repair: HVAC, Elec., Roof, ADA
- Grades: K-5
- Projected Enrollment: N/A
- Category: Project Scope & Budget
- District Total Project Budget: \$27,412,128
- Reimbursement Rate: 40.00%
- Basis of Maximum Total Grant Amount: \$21,497,319
- MSBA Maximum Grant Amount: \$8,598,927
- Town Meeting Vote: November 2, 2009
- Ballot Vote: December 2009 or January 2010

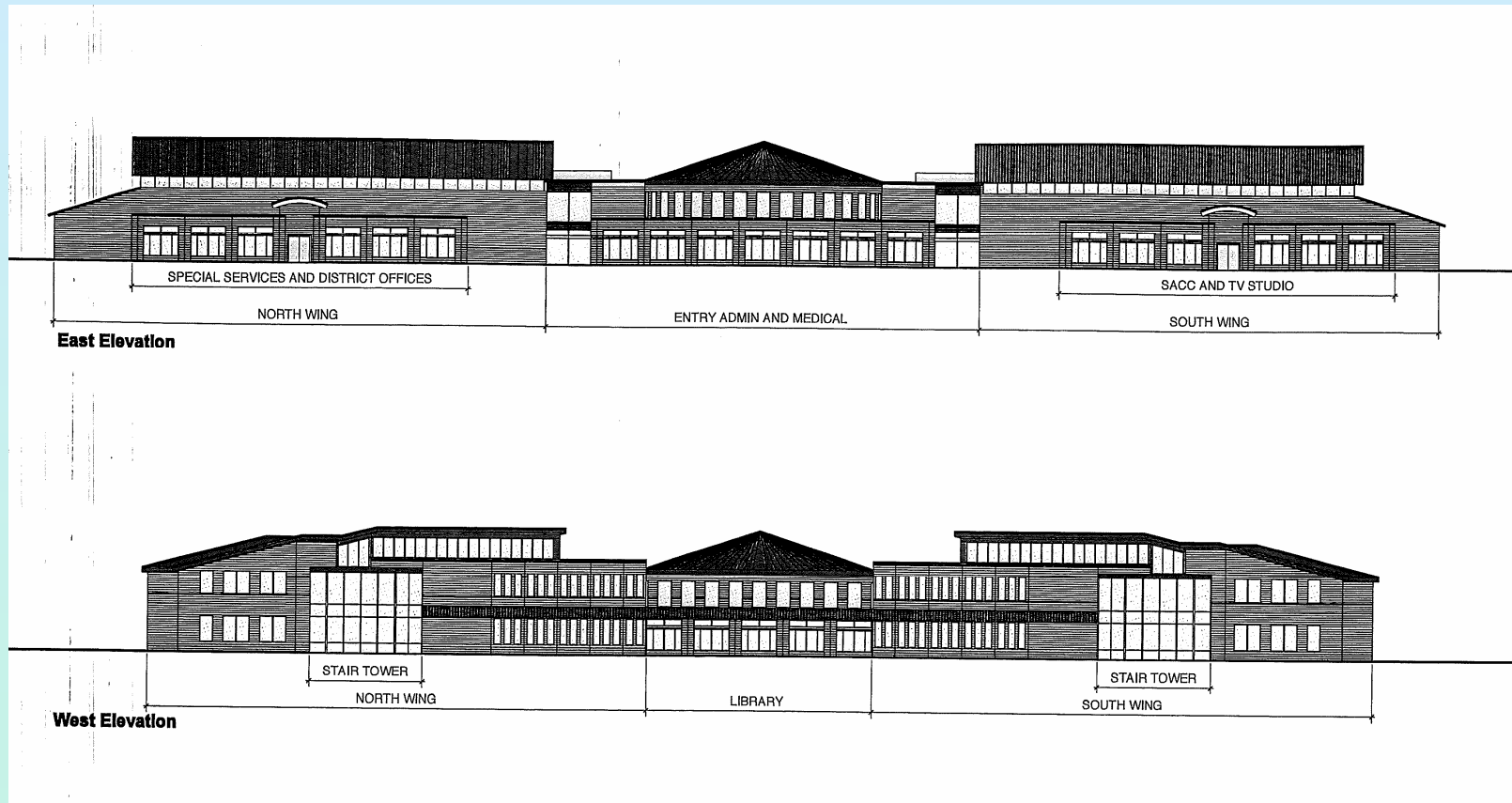
# Norfolk – Freeman-Centennial Elementary School







# Norfolk – Freeman-Centennial Elementary School



# Norfolk – Freeman-Centennial Elementary School



## PLAN KEY

- 1 MAIN ENTRY
- 2 GYM / CAFE ENTRY
- 3 PARENT DROP OFF / ENTRY
- 4 PARENT DROP OFF LOOP
- 5 COVERED WALKWAY
- 6 COURTYARD
- 7 BUS DROP OFF LOOP
- 8 PARKING (334 SPACES TOTAL)
- 9 NOT USED
- 10 HARD SURFACE PLAY REPLACEMENT (TENNIS/B-BALL ETC.)
- 11 NEW "A" FIELD
- 12 NEW "T-BALL" FIELD
- 13 FIRE LANE
- 14 NEW LEACHING FIELD UNDERGROUND RECHARGE SYSTEM (TYPICAL)
- 15 UNDERGROUND RECHARGE SYSTEM (TYPICAL)
- 16 BIO-RETENTION AREA
- 17 NOT USED
- 18 NEW "AA" FIELD
- 19 EXISTING SCHOOL TO BE DEMOLISHED

**SITE PLAN**  
scale: 1" = 100'-0"  
date: 8/6/09

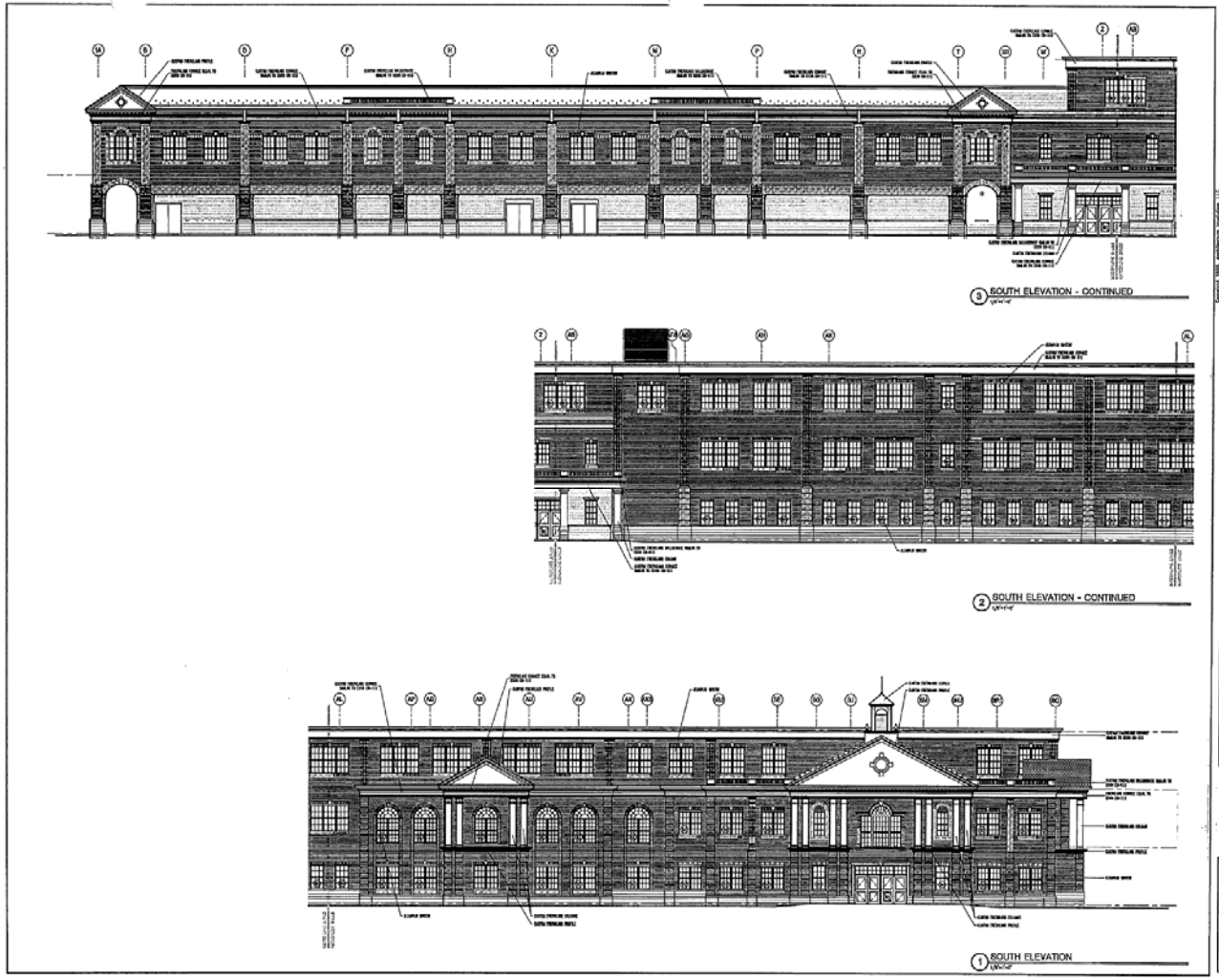


# Norfolk – Freeman-Centennial Elementary School

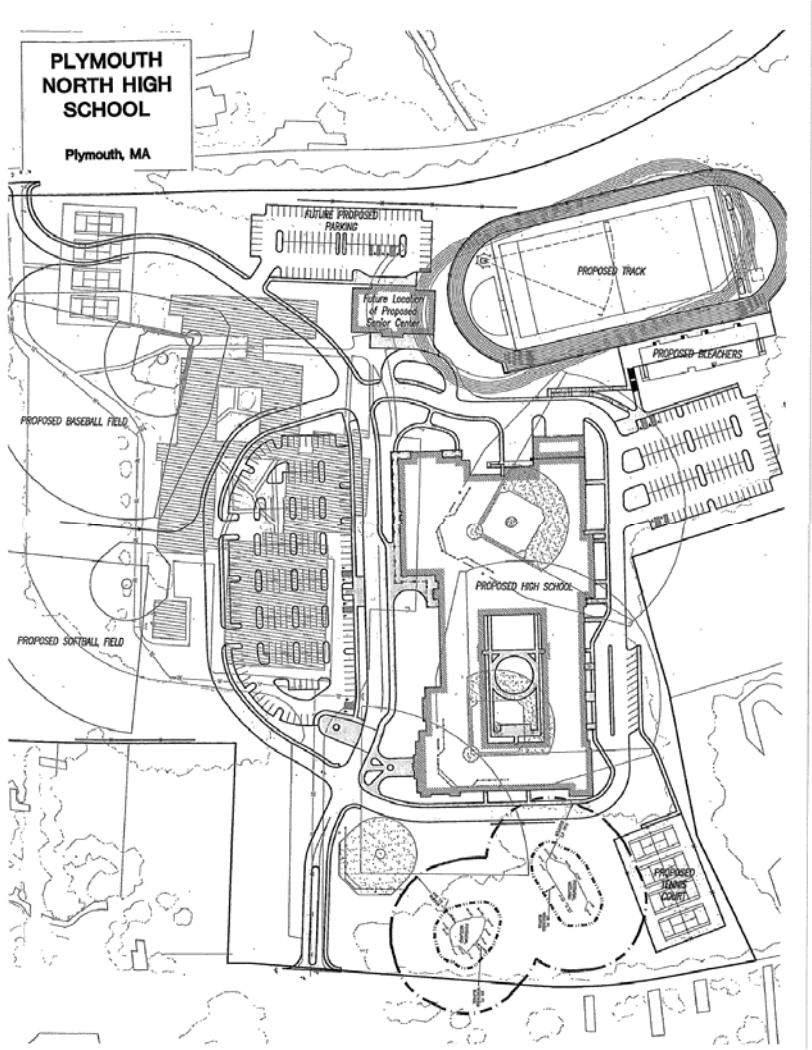
- Built in 1950
- SF of New Construction: 96,410 sf
- Grades: 1-6
- Projected Enrollment: 585
- Category: Project Scope & Budget
- District Total Project Budget: \$37,543,029
- Reimbursement Rate: 53.16%
- Basis of Maximum Total Grant Amount: \$32,500,093
- MSBA Maximum Grant Amount: \$17,277,050
- Town Meeting Vote: November 10, 2009
- Ballot Vote: January 9, 2010



# Plymouth – North High School



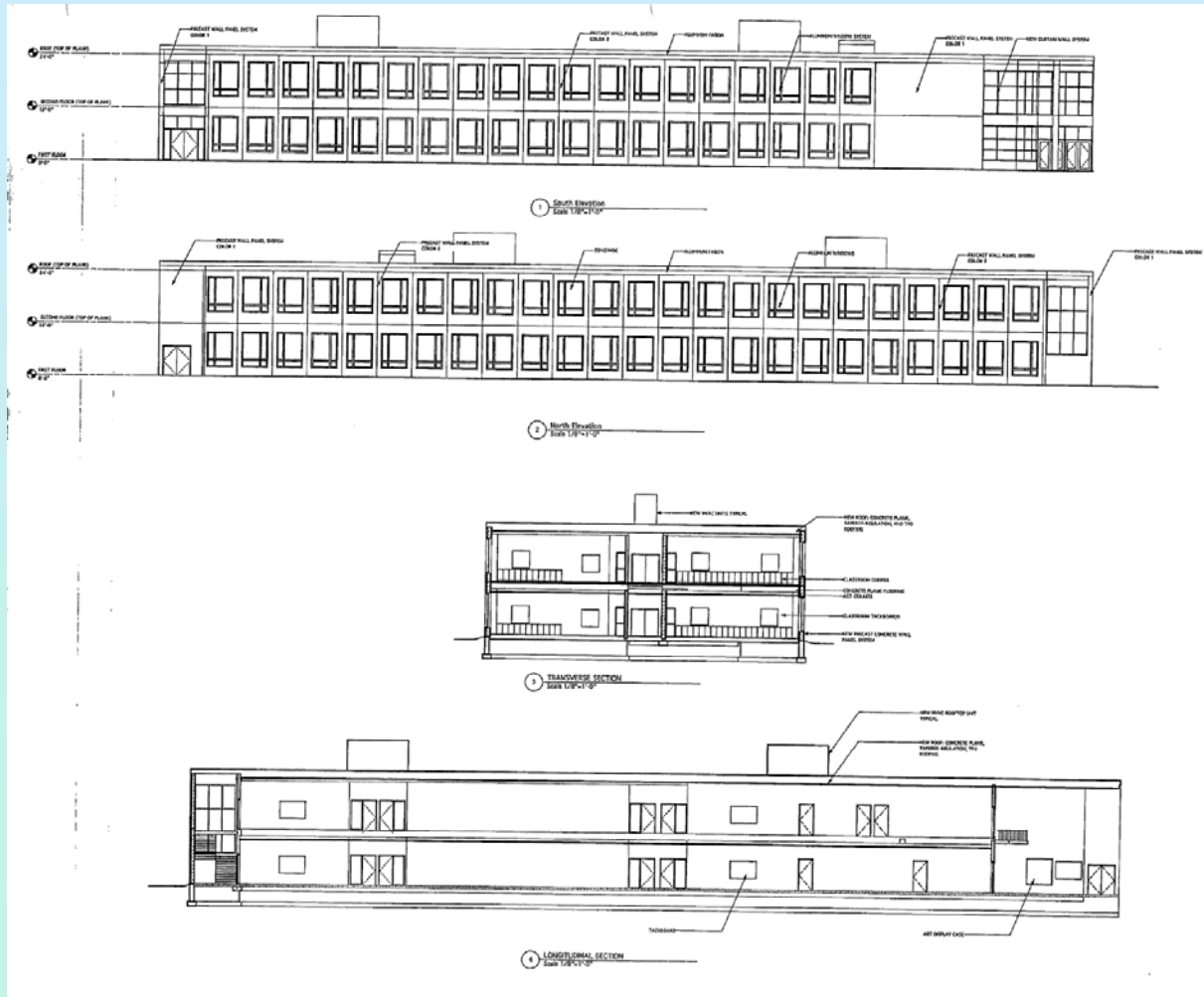
# Plymouth – North High School



# Plymouth – North High School

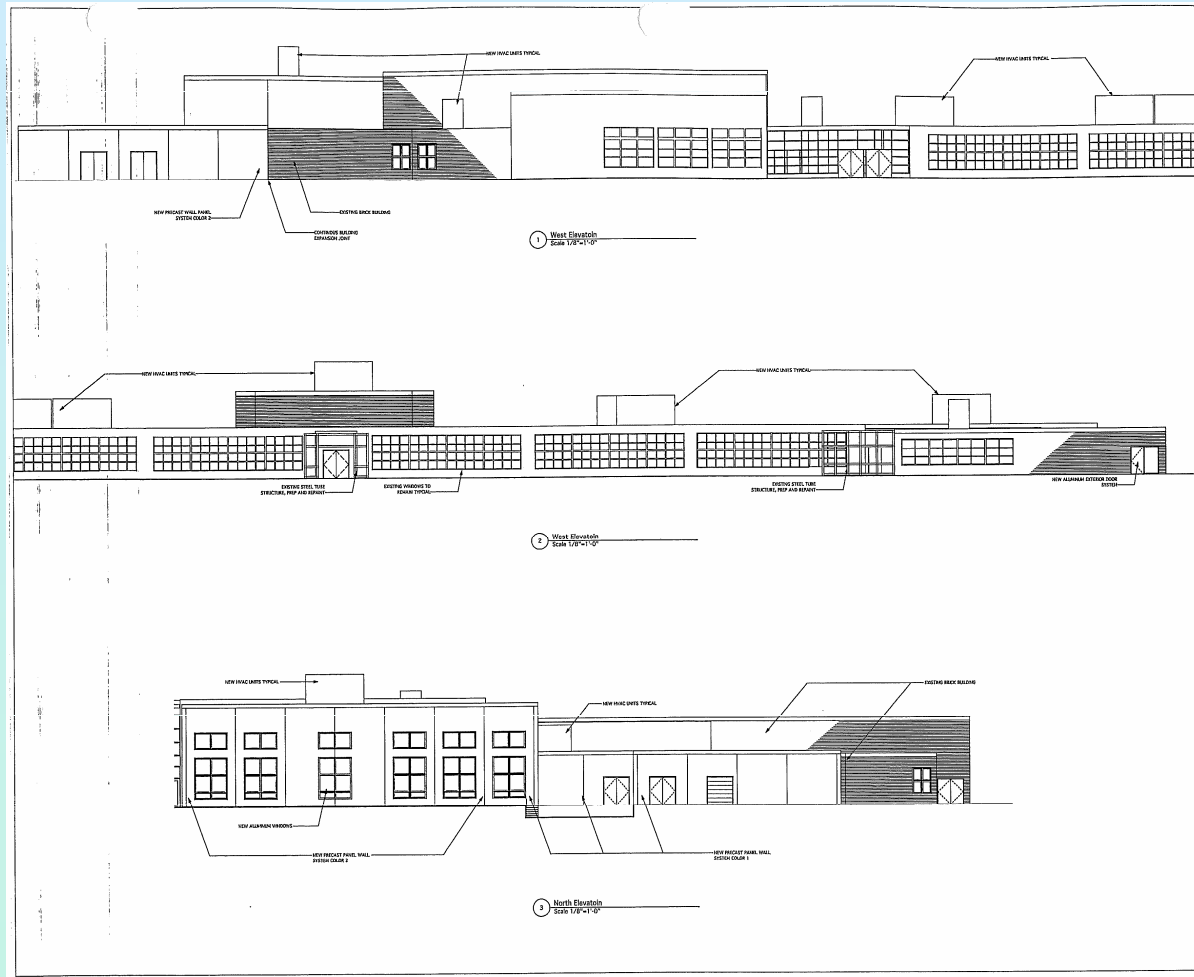
- Built in 1963
- SF of New Model School: 267,357 sf
- Grades: 9-12
- Projected Enrollment: 1350
- Category: Project Scope & Budget
- District Total Project Budget: \$92,249,040
- Reimbursement Rate: 58.24%
- Basis of Maximum Total Grant Amount: \$79,420,894
- MSBA Maximum Grant Amount: \$ 46,254,729

# Rochester – Memorial Elementary School

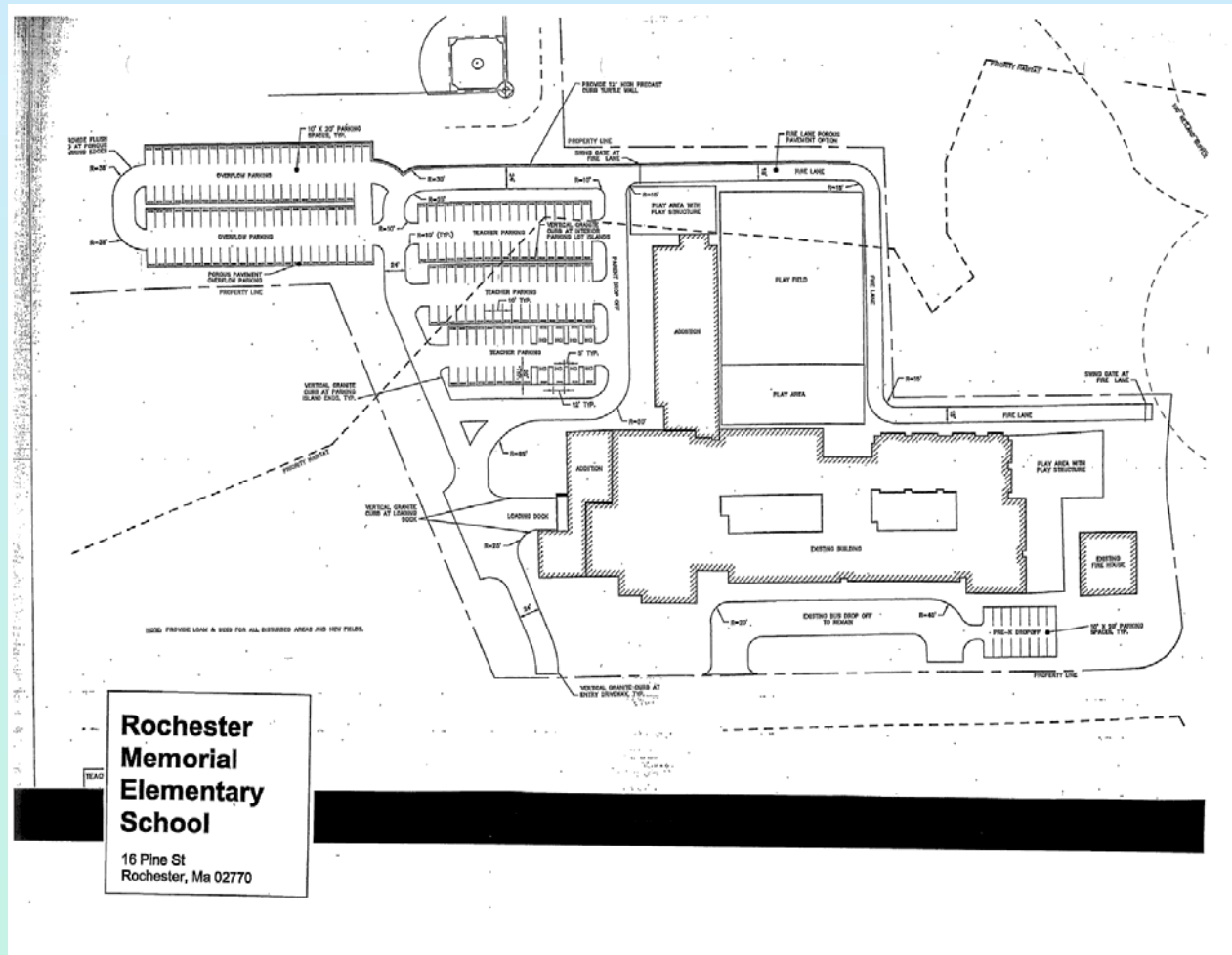




# Rochester – Memorial Elementary School



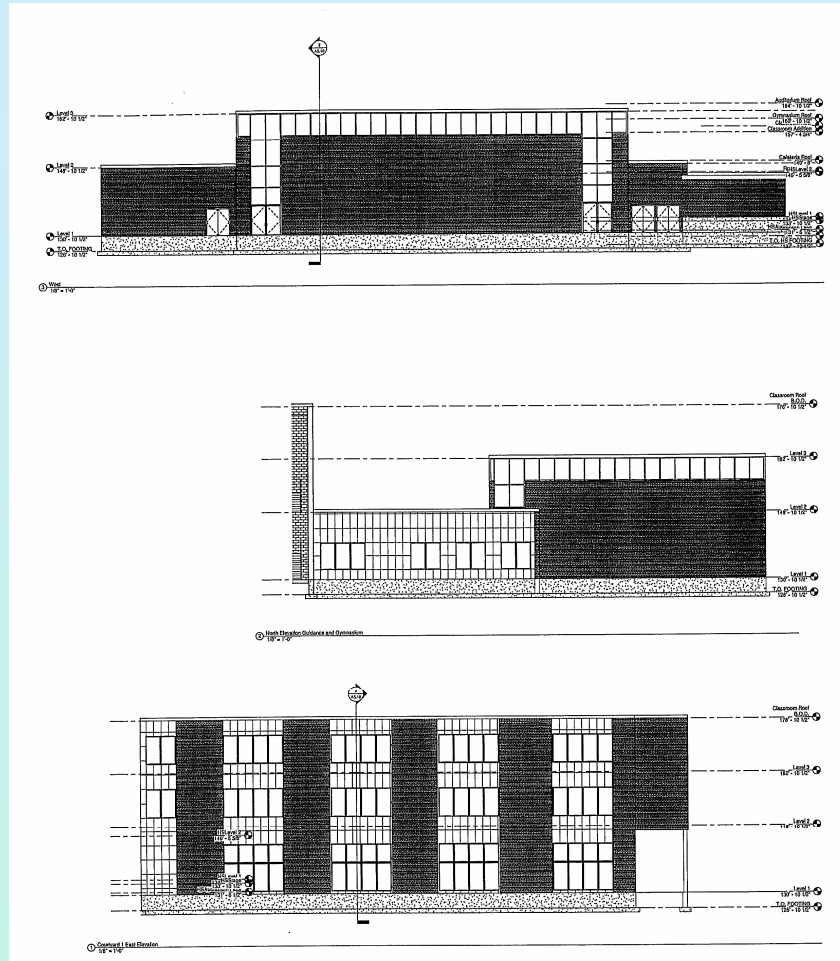
# Rochester – Memorial Elementary School



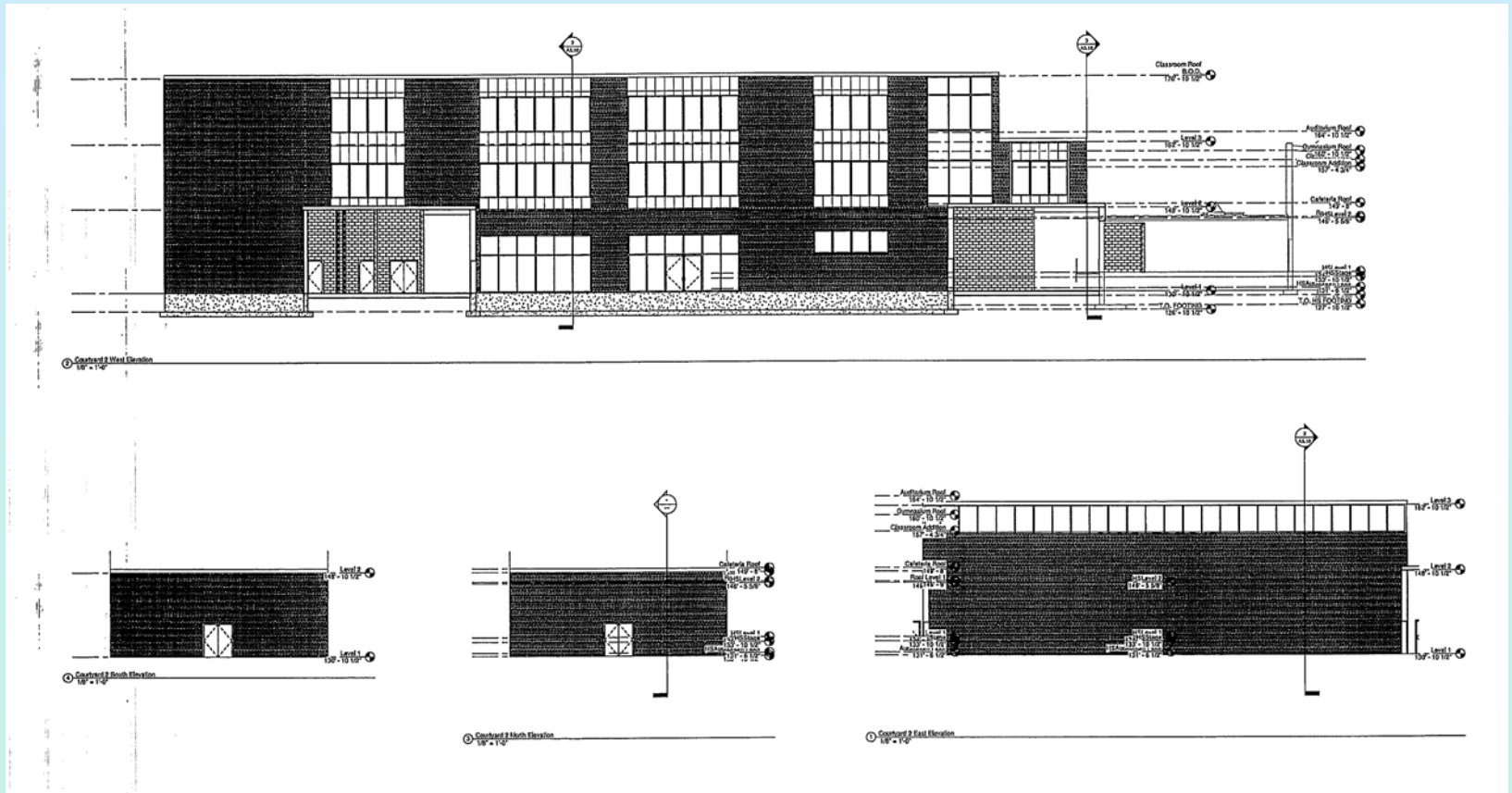
# Rochester – Memorial Elementary School

- Built in 1953
- SF of Add/Reno: 105,023 sf
- Grades: K-6
- Projected Enrollment: 635
- Category: Project Scope & Budget
- District Total Project Budget: \$26,500,000
- Reimbursement Rate: 57.94%
- Basis of Maximum Total Grant Amount: \$25,268,708
- MSBA Maximum Grant Amount: \$14,640,689
- Town Meeting Vote: October 26, 2009
- Ballot Vote: October 31, 2009

# Rockland – John W. Rogers Middle School

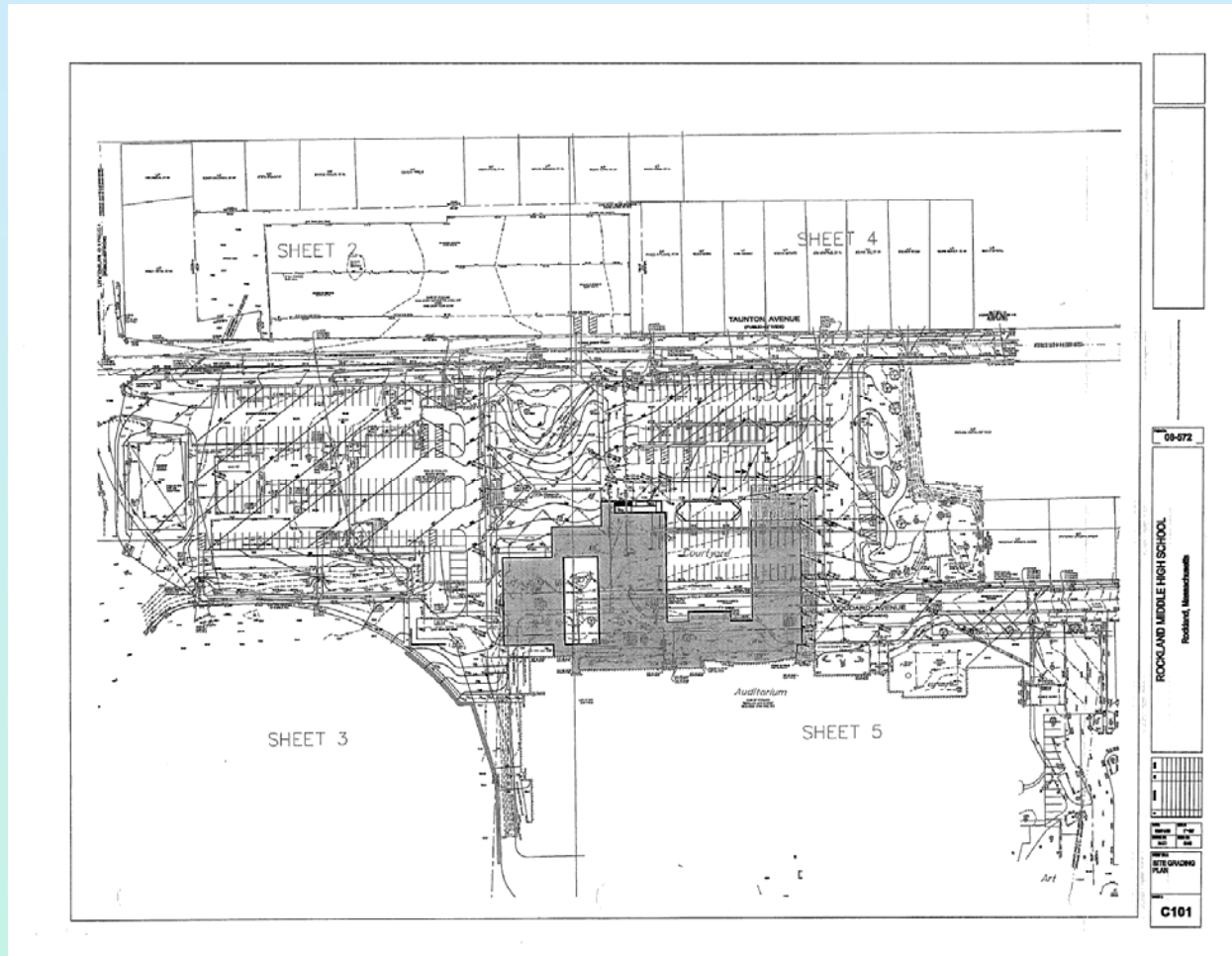


# Rockland – John W. Rogers Middle School





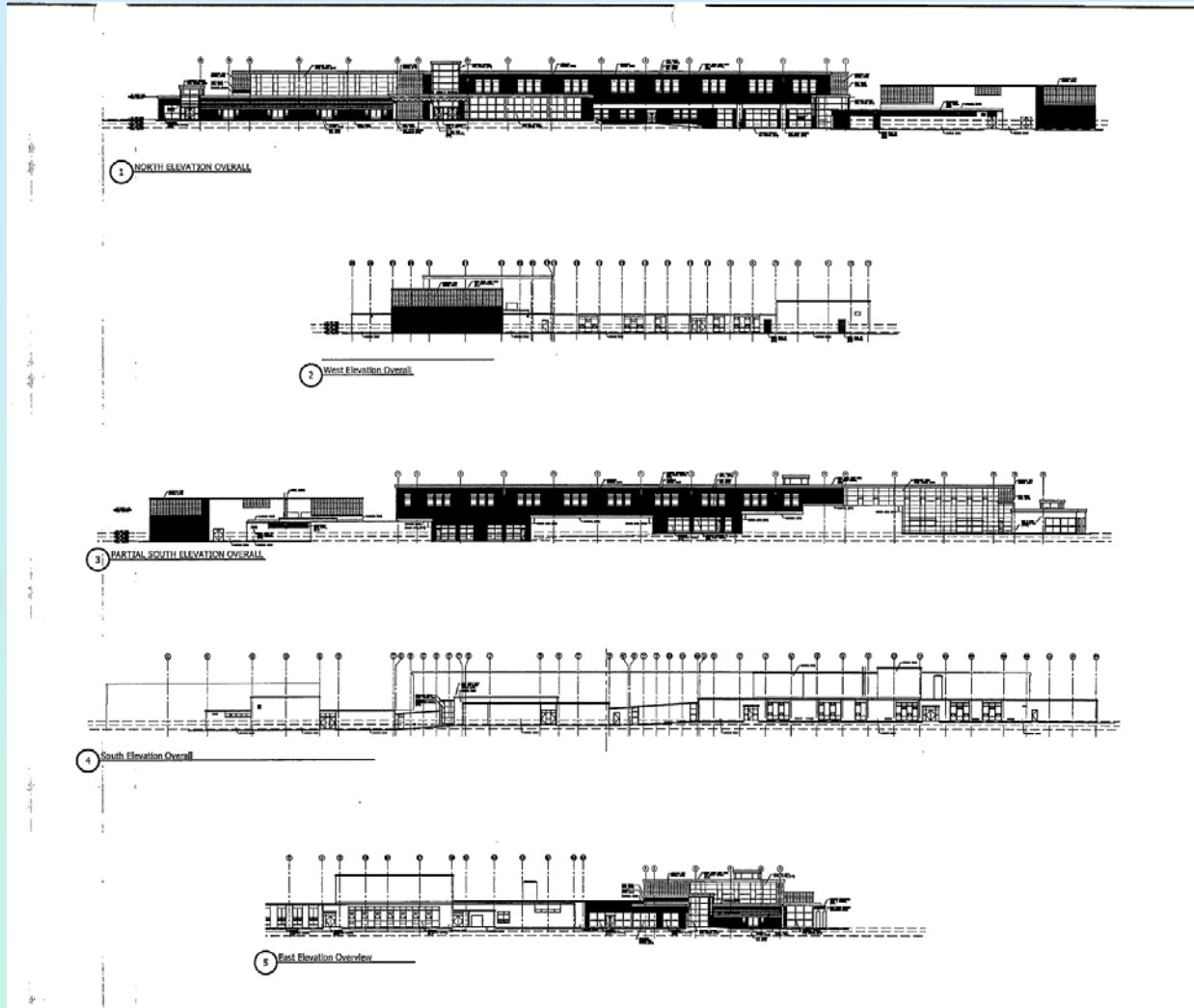
# Rockland – John W. Rogers Middle School



# Rockland – John W. Rogers Middle School

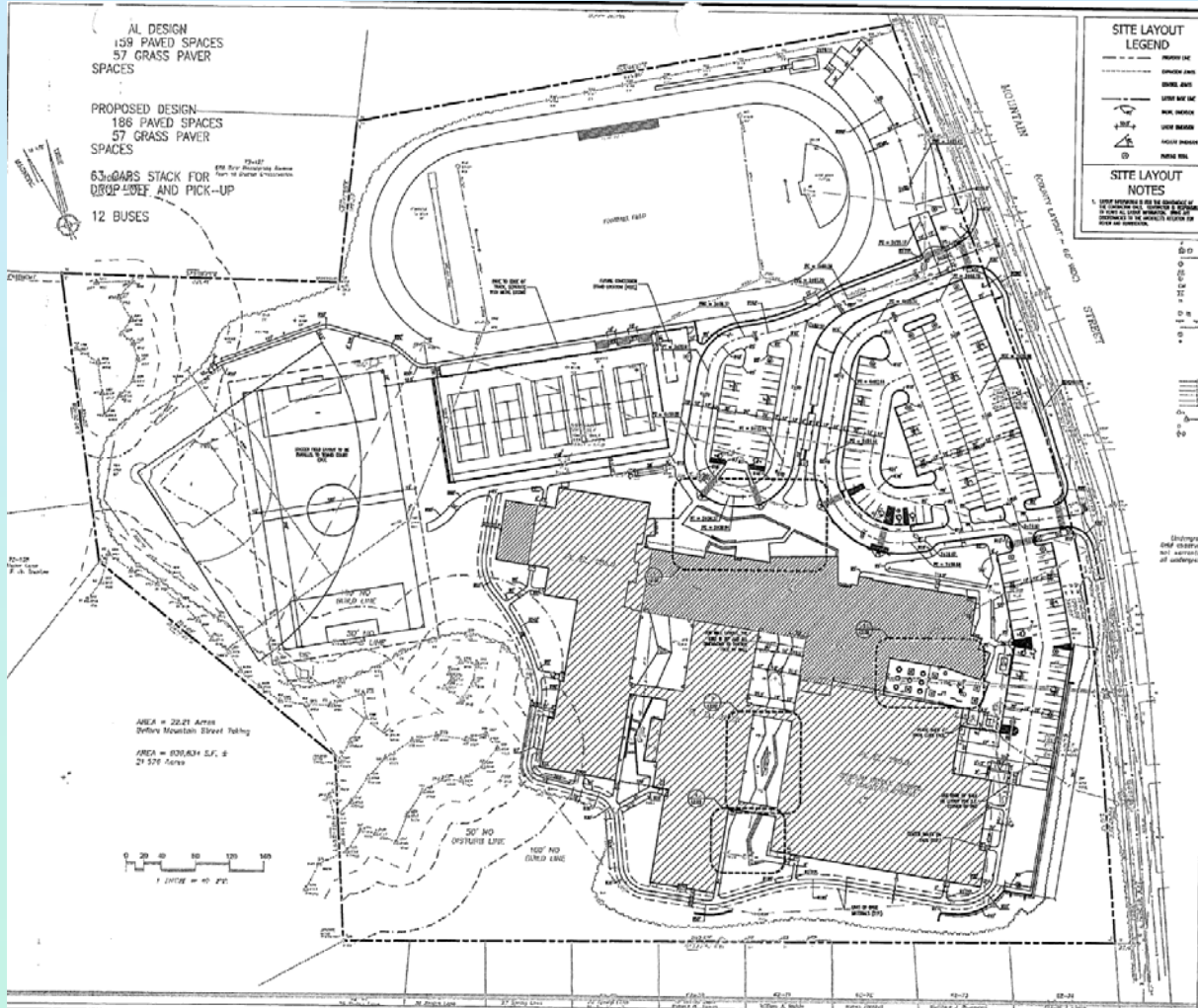
- Built in 1928
- SF of New Construction: 109,500 sf
- SF of Renovation: 158,606 sf
- Grades: 6-8
- Projected Enrollment: 775-MS, 750-HS
- Category: Project Scope & Budget
- District Total Project Budget: \$86,201,449
- Reimbursement Rate: 64.26%
- Basis of Maximum Total Grant Amount: \$83,032,496
- MSBA Maximum Grant Amount: \$ 53,356,682
- Town Meeting Vote: November 2, 2009
- Ballot Vote: December 5, 2009

# Sharon – Middle School





# Sharon – Middle School

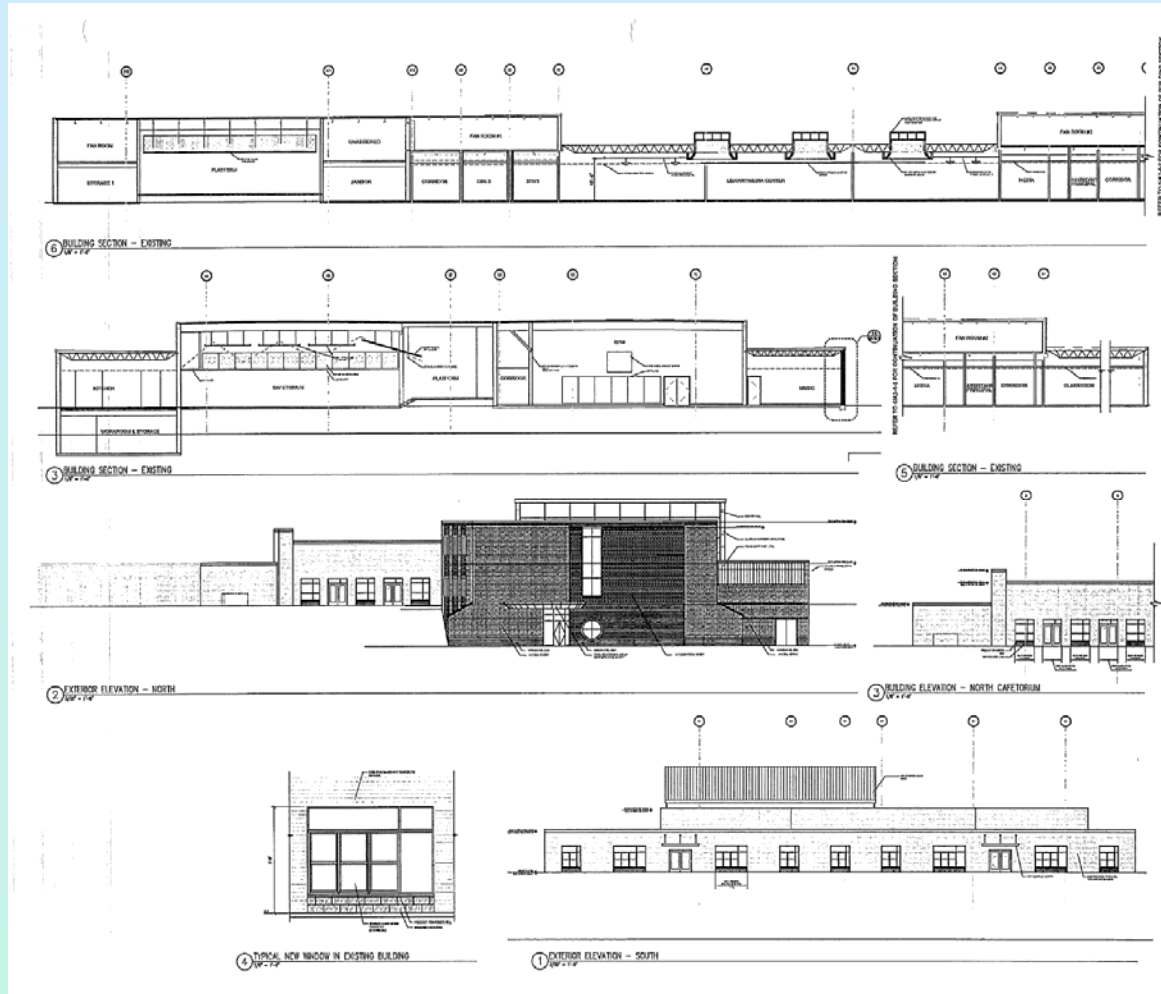




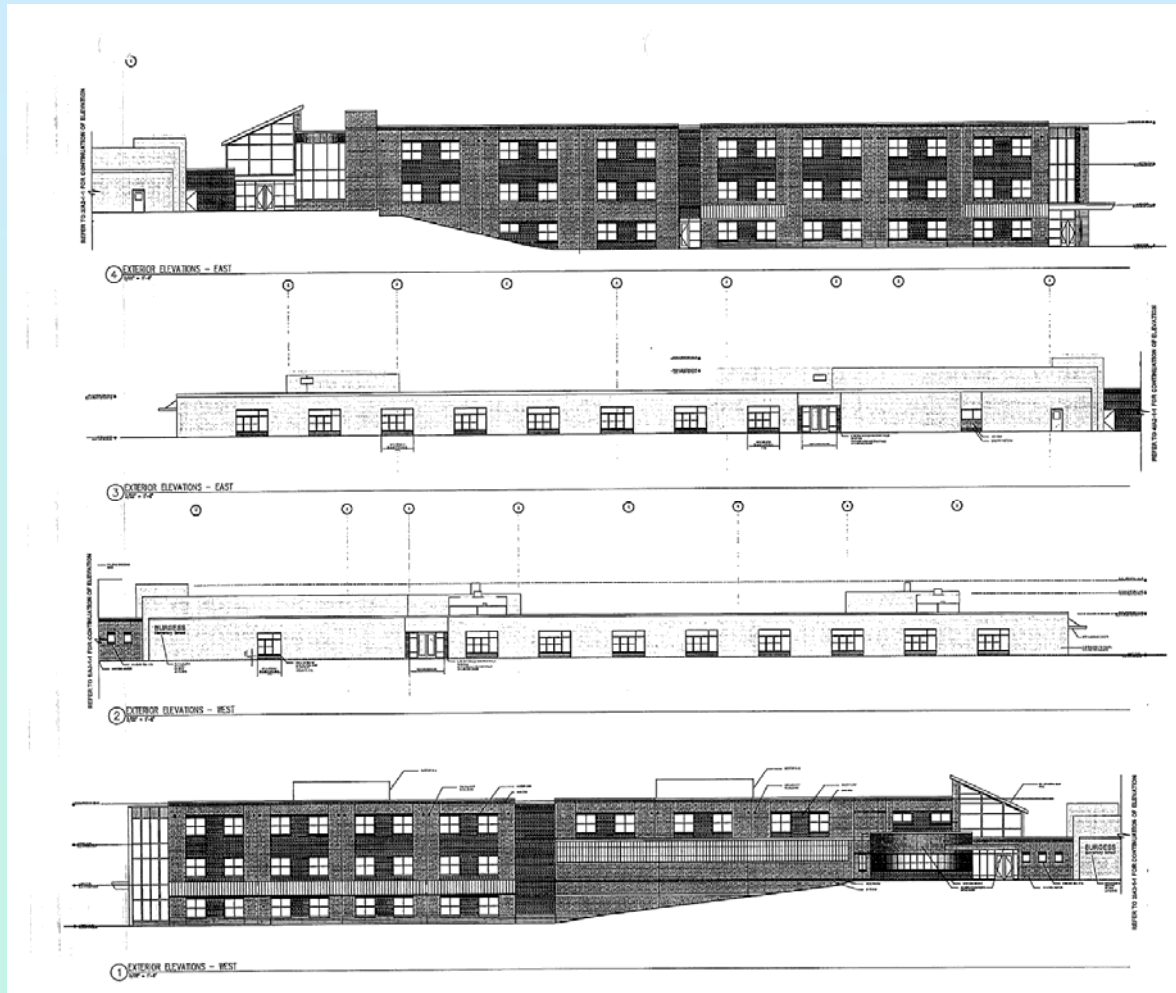
# Sharon – Middle School

- Built in 1963
- SF of Add/Reno: 170,750 sf
- Grades: 6-8
- Projected Enrollment: 845
- Category: Project Scope & Budget
- District Total Project Budget: \$49,540,287
- Reimbursement Rate: 52.68%
- Basis of Maximum Total Grant Amount: \$43,950,340
- MSBA Maximum Grant Amount: \$ 23,153,039
- Town Meeting Vote: November 19, 2009
- Ballot Vote: January 19, 2010 (Tentative)

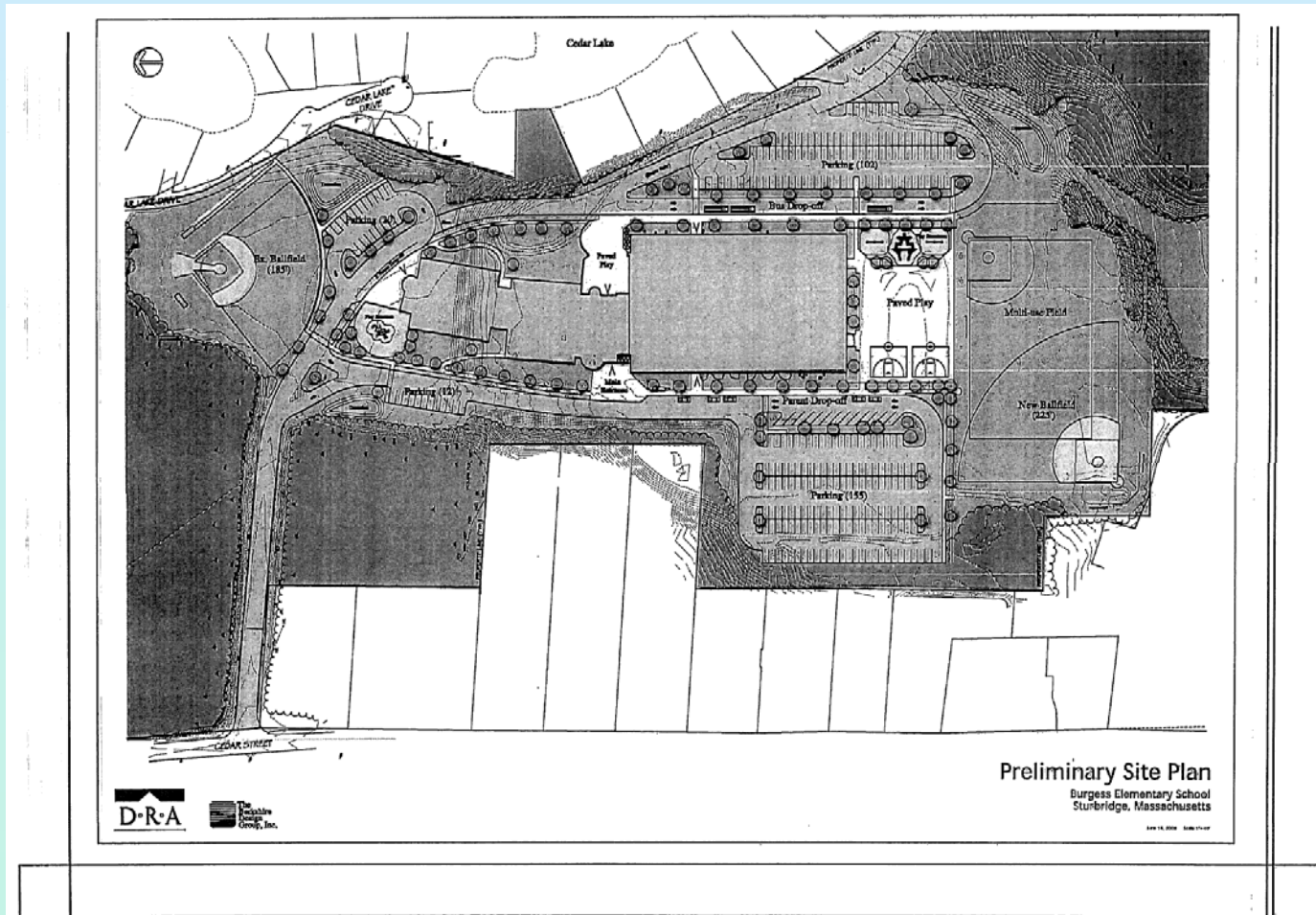
# Sturbridge – Burgess Elementary School



# Sturbridge – Burgess Elementary School



# Sturbridge – Burgess Elementary School

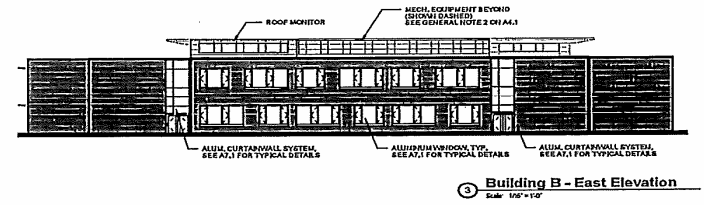
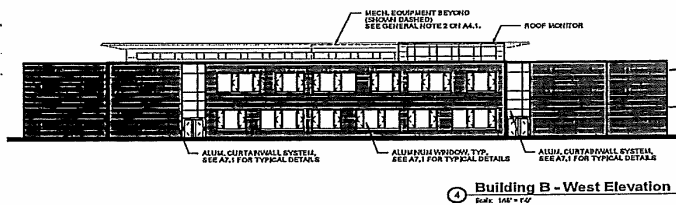
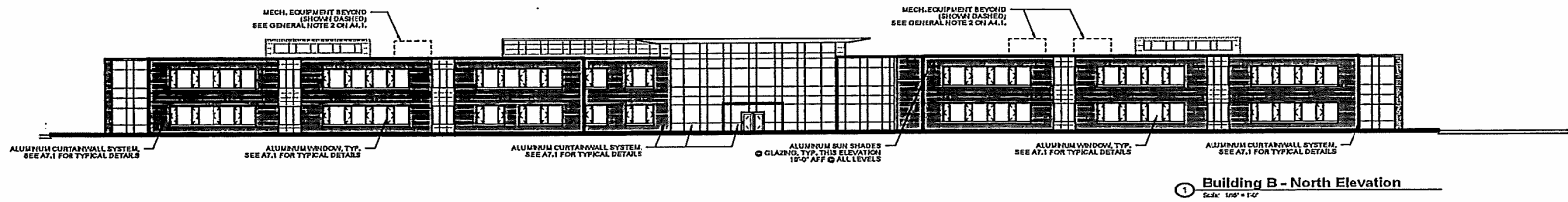
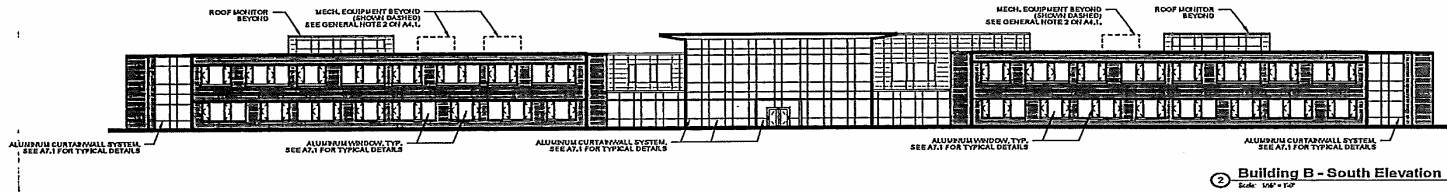


# Sturbridge – Burgess Elementary School

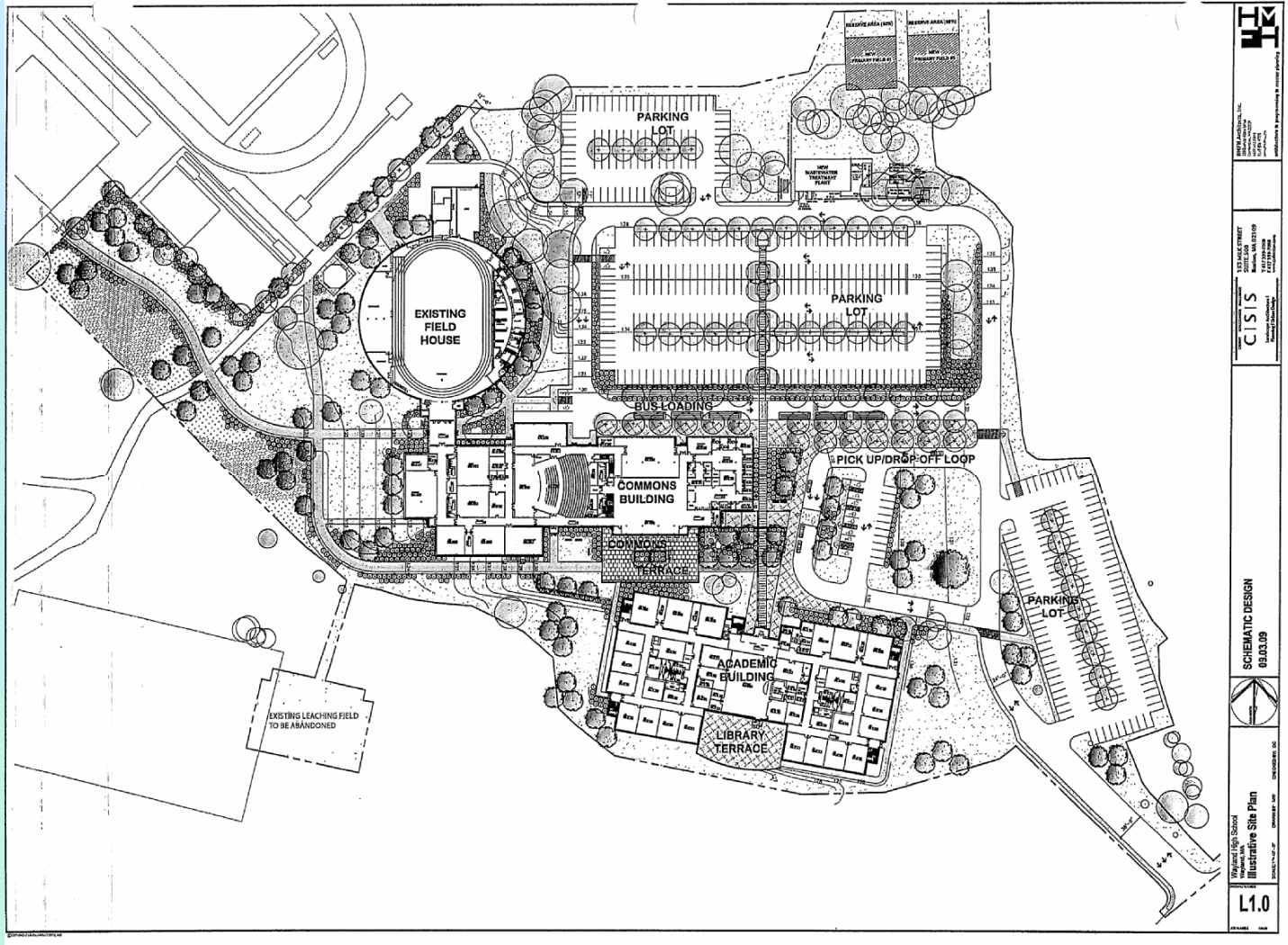
- Built in 1949
- SF of Add/Reno: 129,300
- Grades: K-6
- Projected Enrollment: 860
- Category: Project Scope & Budget
- District Total Project Budget: \$46,926,630
- Reimbursement Rate: 57.92%
- Basis of Maximum Total Grant Amount: \$41,844,754
- MSBA Maximum Grant Amount: \$ 24,236,481
- Town Meeting Vote: October 19, 2009
- Ballot Vote: October 26, 2009



# Wayland – High School



# Wayland – High School



# Wayland – High School

- Built in 1959
- SF of New Construction: 171,000
- Grades: 9-12
- Projected Enrollment: 900
- Category: Project Scope & Budget
- District Total Project Budget: \$70,800,000
- Reimbursement Rate: 40.00%
- Basis of Maximum Total Grant Amount: \$62,500,000
- MSBA Maximum Grant Amount: \$ 25,000,000
- Town Meeting Vote: November 18,2009
- Ballot Vote: November 17, 2009

# Vote to Move to Feasibility Study

## 14 Districts

District	School	Grades	Status	Recommendation
East Bridgewater	High School	9-12	Hold	Feasibility Study
Leominster	High School	9-12	Repair	Feasibility Study
Lincoln	Lincoln K-8	PK-8	New SOI FY2009	Feasibility Study
Lynnfield	High School	9-12	New SOI FY2009	Feasibility Study
Norton	High School	9-12	Hold	Feasibility Study
Orange	Dexter Park Intermediate School	PK-4	Regionalization Assessment	Feasibility Study
Scituate	Wampatuck Elementary School	K-6	New SOI FY2009	Feasibility Study
South Hadley	Plains Elementary School	PK-1	Planning	Feasibility Study
Wachusett	Mountview Middle School	6-8	New SOI FY2009	Feasibility Study
Webster	Park Avenue Elementary School	K-2	Hold	Feasibility Study
West Springfield	High School	9-12	Hold	Feasibility Study
Westfield	Abner Gibbs Elementary School	K-5	Planning	Feasibility Study
Weston	Field Elementary School	4-5	New SOI FY2009	Feasibility Study
Wilmington	High School	9-12	New SOI FY2009	Feasibility Study

# Vote to Move to Feasibility Study- Repair 8 Districts

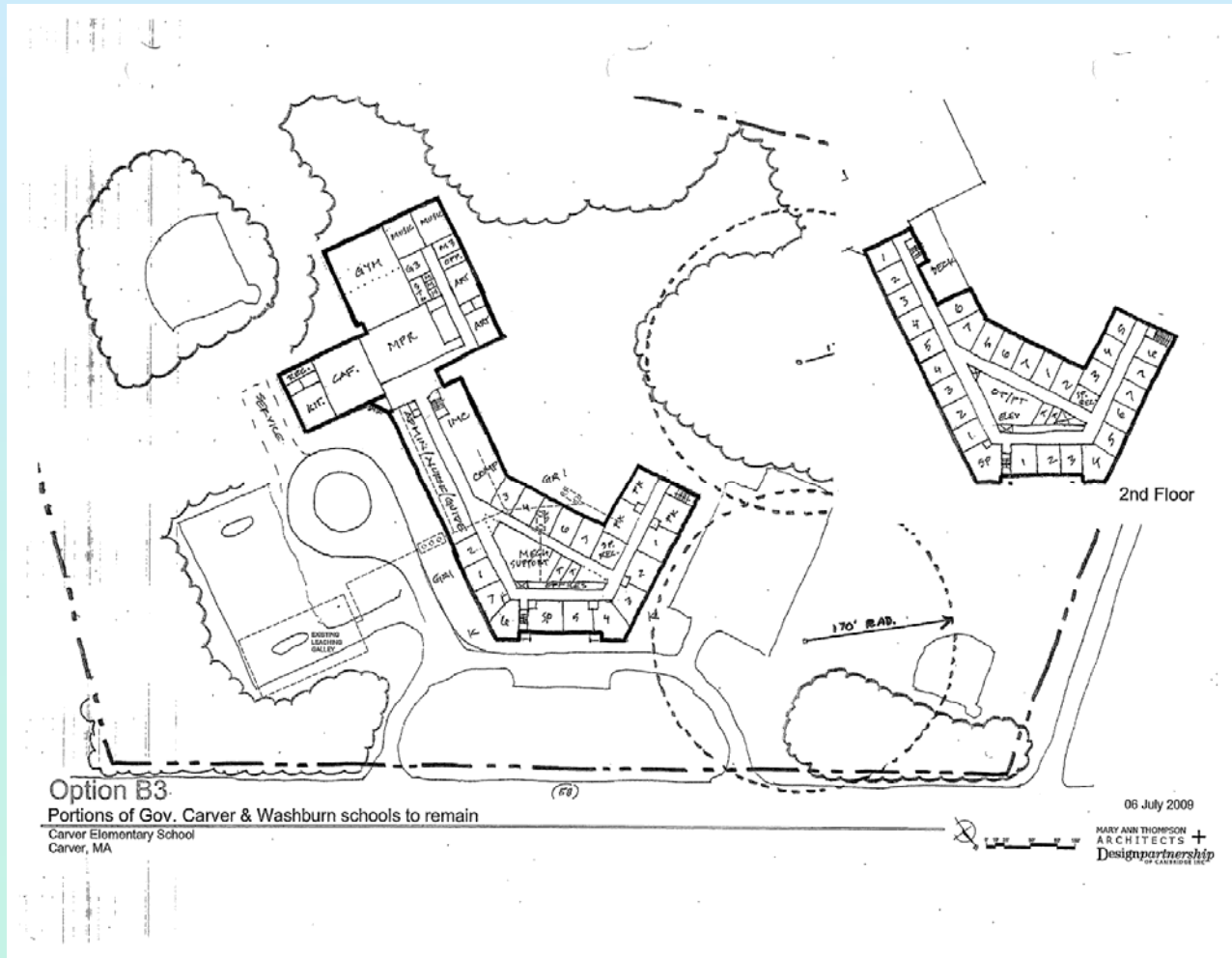
District	School	Grades	Status	Recommendation
Athol-Royalston	Riverbend Elementary School	K-5	Hold	Feasibility Study- Repair
Concord-Carlisle	High School	9-12	Hold	Feasibility Study- Repair
Greenfield	High School	9-12	Hold	Feasibility Study- Repair
Mount Greylock	Regional High School	7-12	Hold	Feasibility Study- Repair
Salem	Collins Middle School	6-8	New SOI FY2009	Feasibility Study- Repair
Spencer-East Brookfield	David Prouty High School	9-12	Hold	Feasibility Study- Repair
Stoneham	Middle School	6-8	New SOI FY2009	Feasibility Study- Repair
Westborough	Sarah W. Gibbons Middle School	7-8	New SOI FY2009	Feasibility Study- Repair



# Vote to Move to Preferred Schematic Design

District	School	Age of Ex. Bld	Gr	2008/9 Enroll	Pro. Enroll	Ex. Sq.Ft.	Pro. New Square Footage	Current MSBA Category	Proposed Scope of Project	District Total Project Budget	Demo/ Bld Abate. NIC in grant	MSBA Total Facility Grant Basis	Reim. Rate	Approx. Grant Amount
Carver	Gov John Carver ES	1951	K-5	892	925	99,392	~133,930	Feasibility Study	Combined Add/Reno ES	TBD	TBD	TBD	56.26%	TBD
Grafton	Memorial Sr HS	1962	9-12	681	900	102,924	~194,239	Feasibility Study	Proposed New	TBD	TBD	TBD	52.89%	TBD
Southbridge	High School	1927	9-12	407	MS/HS 1050	MS&HS 196,851	~200,000	Feasibility Study	Combined New MS/HS	TBD	TBD	TBD	78.95%	TBD
Shrewsbury	Sherwood MS	1964	5-6	917	900	100,560	~130,000	Feasibility Study	Proposed New	TBD	TBD	TBD	50.16%	TBD

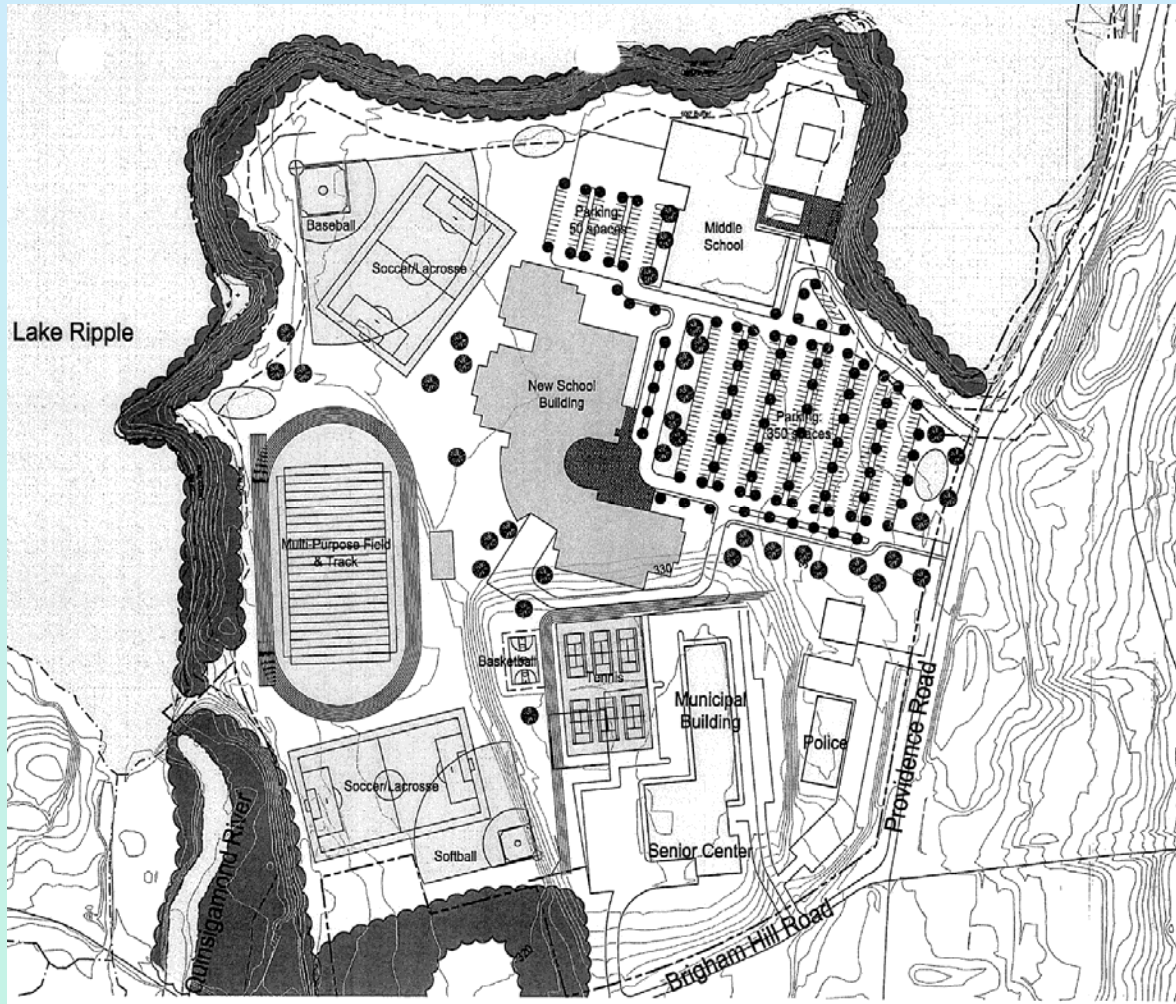
# Carver – Governor John Carver Elementary School



# Carver – Governor John Carver Elementary School

- Built in 1951
- SF of Combined Add/Reno: ~133,930
- Grades: K-5
- Agreed Upon Enrollment: 925
- Category: Preferred Schematic Design
- Reimbursement Rate: 56.26%

# Grafton – Memorial Senior High School

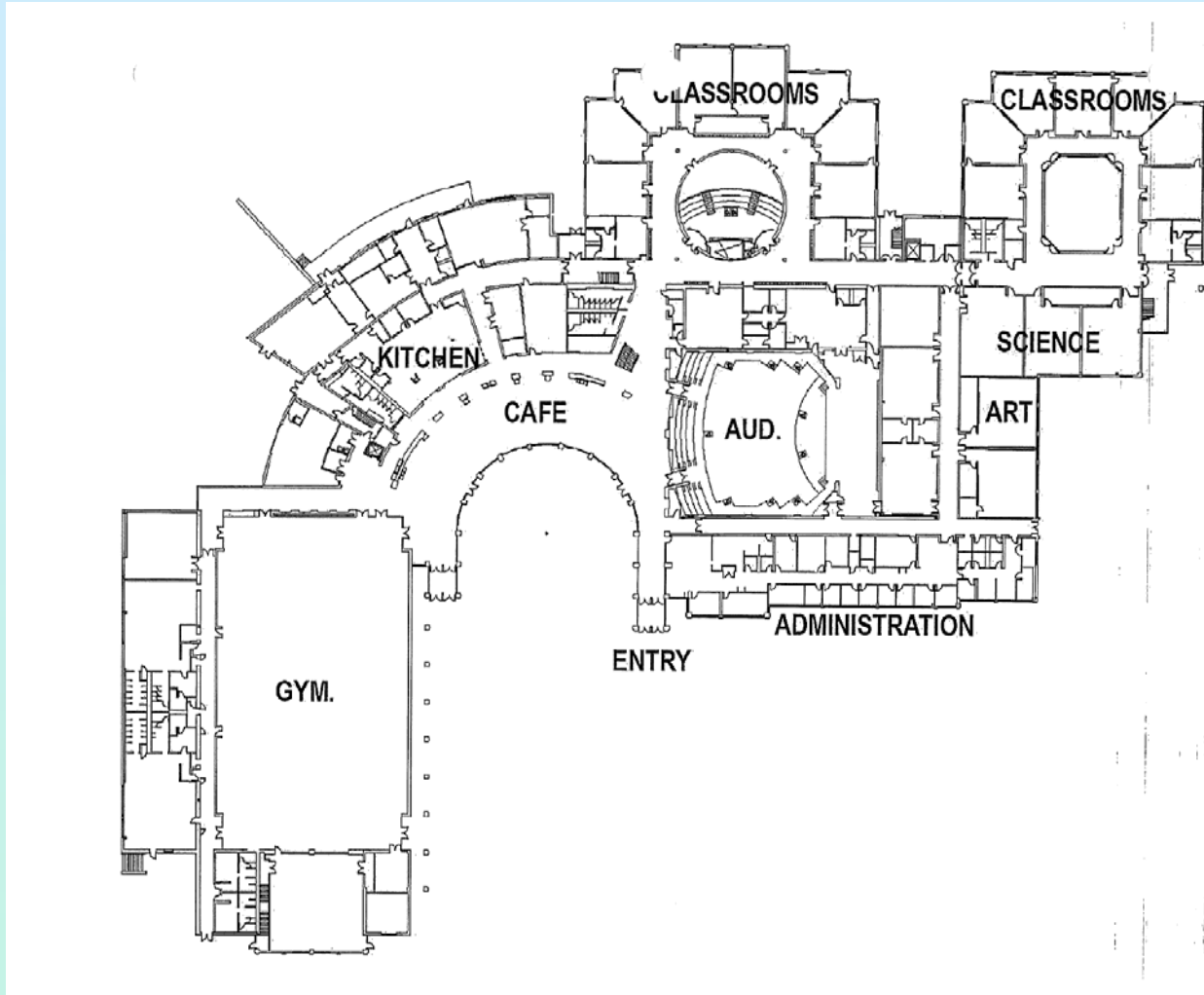


September 30, 2009

The Massachusetts School Building Authority  
[www.massschoolbuildings.org](http://www.massschoolbuildings.org)

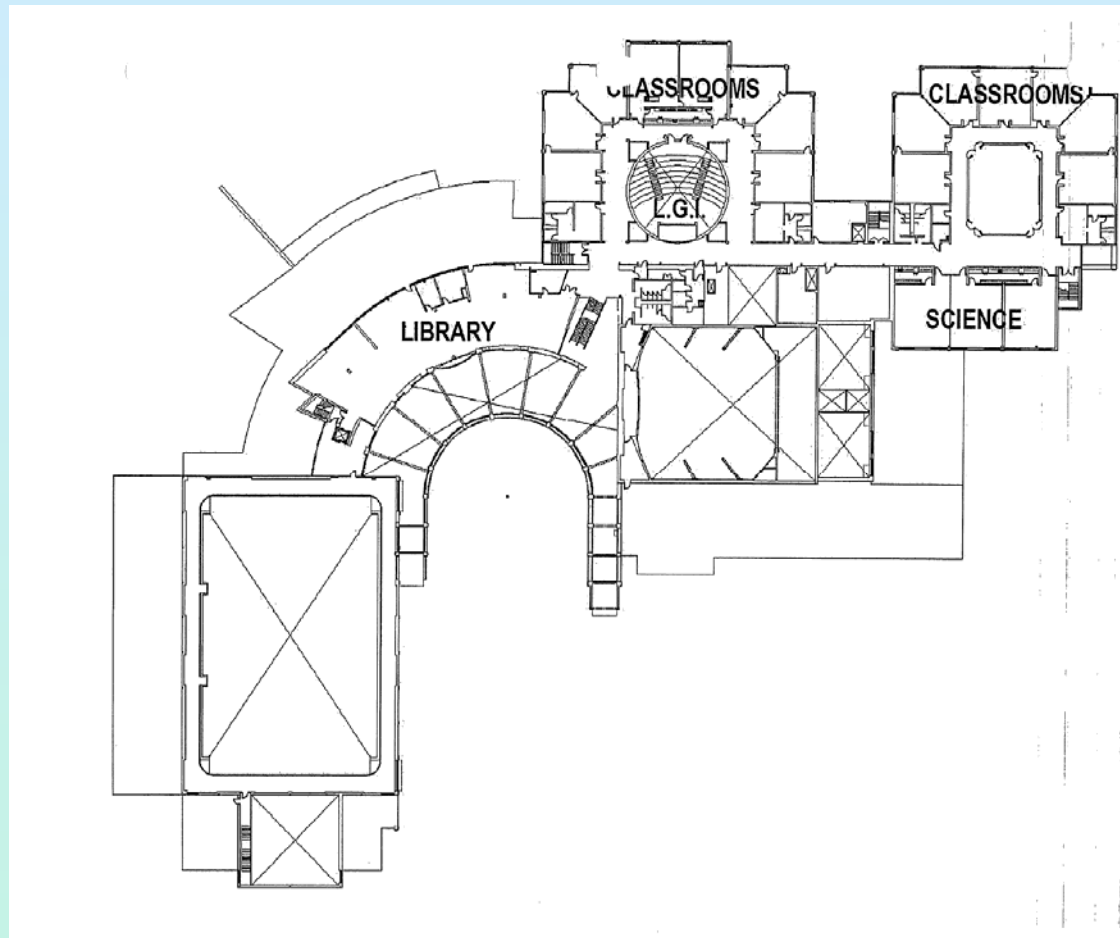
61

# Grafton – Memorial Senior High School





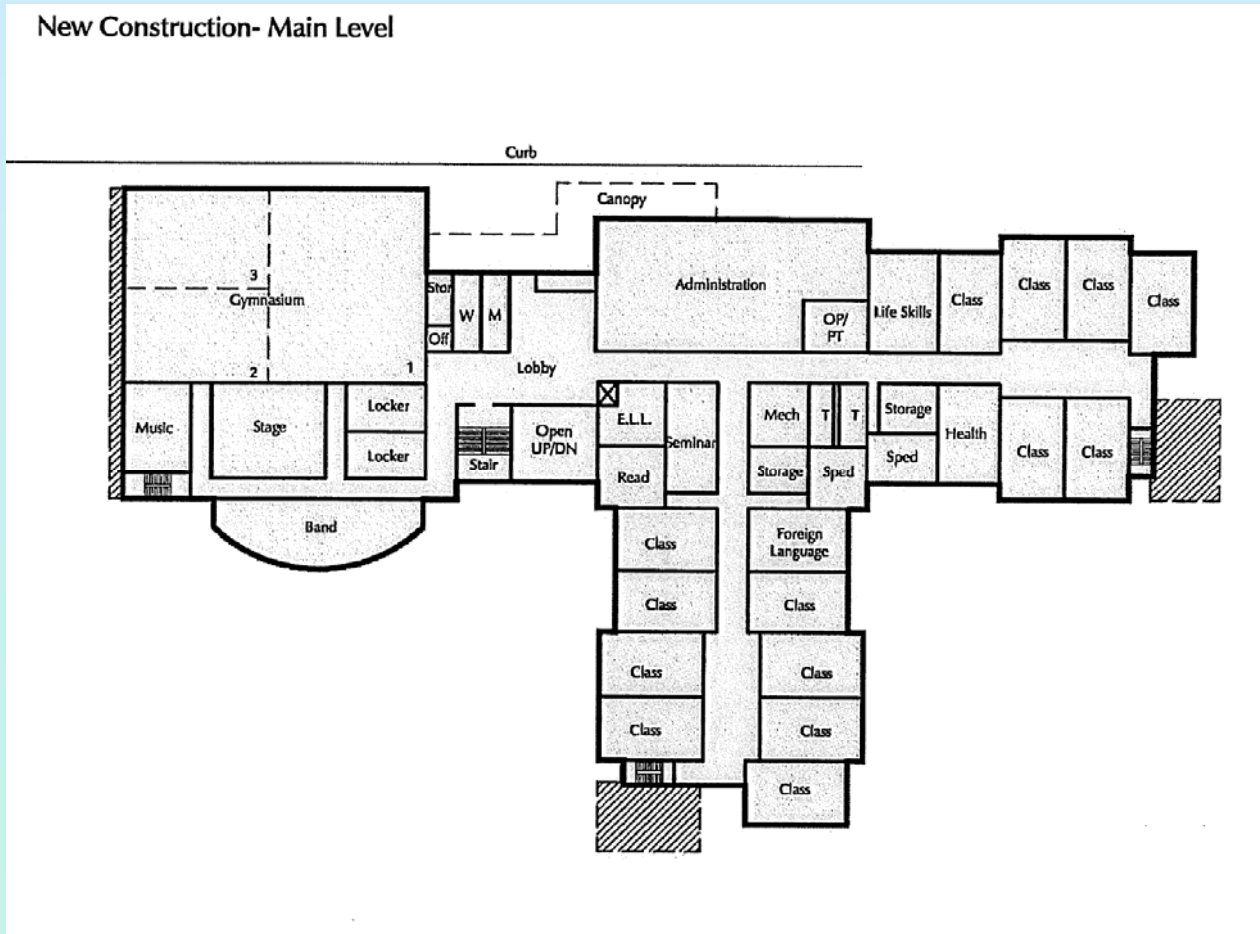
# Grafton – Memorial Senior High School



# Grafton – Memorial Senior High School

- Built in 1962
- Proposed New SF: ~194,239
- Grades: 9-12
- Agreed Upon Enrollment: 900
- Category: Preferred Schematic Design
- Reimbursement Rate: 52.89%

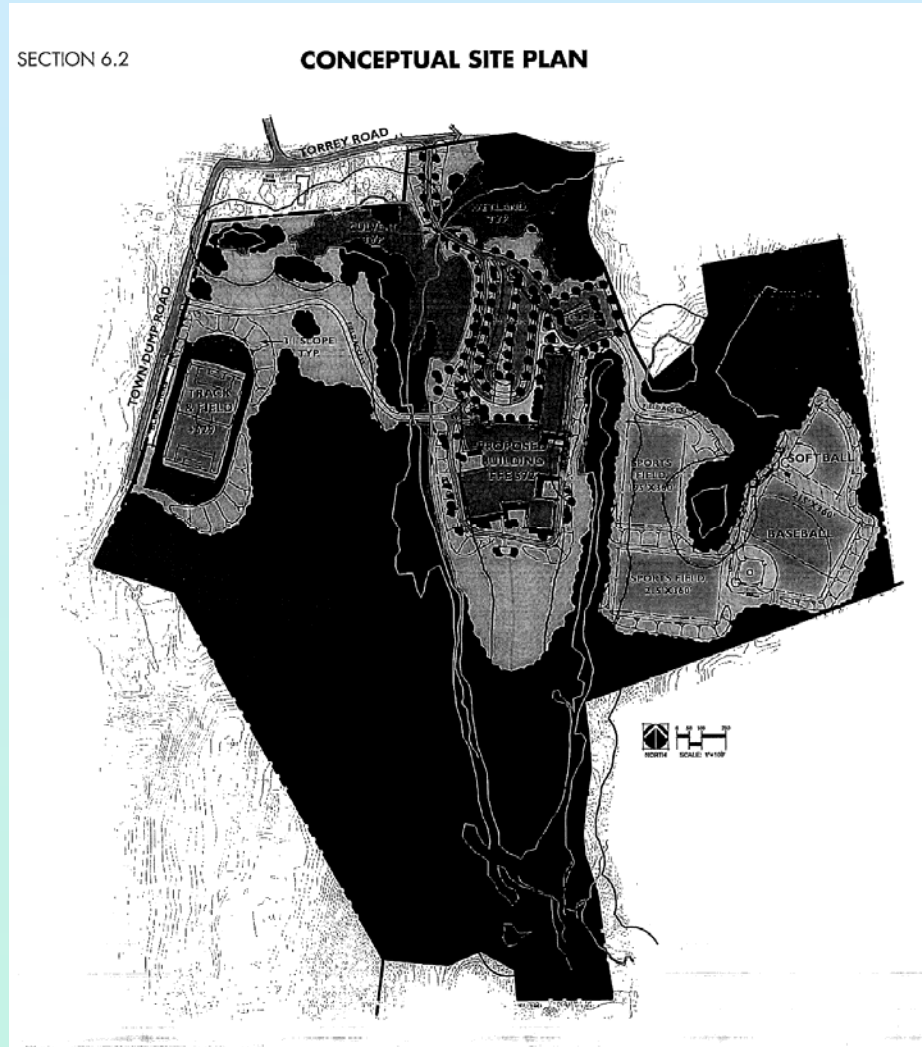
# Shrewsbury – Sherwood Middle School



# Shrewsbury – Sherwood Middle School

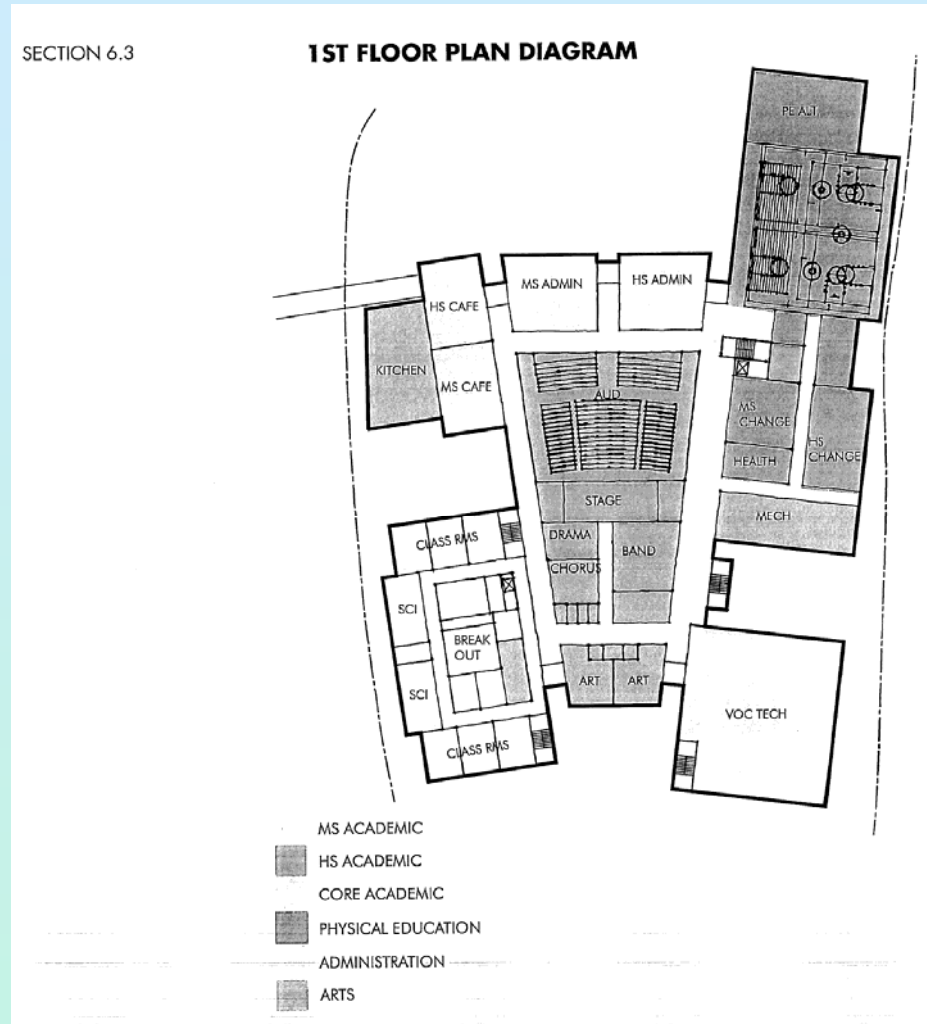
- Built in 1964
- Proposed New SF: 130,000 SF
- Grades: 5-6
- Agreed Upon Enrollment: 900
- Category: Preferred Schematic Design
- Reimbursement Rate: 50.16%

# Southbridge – High School

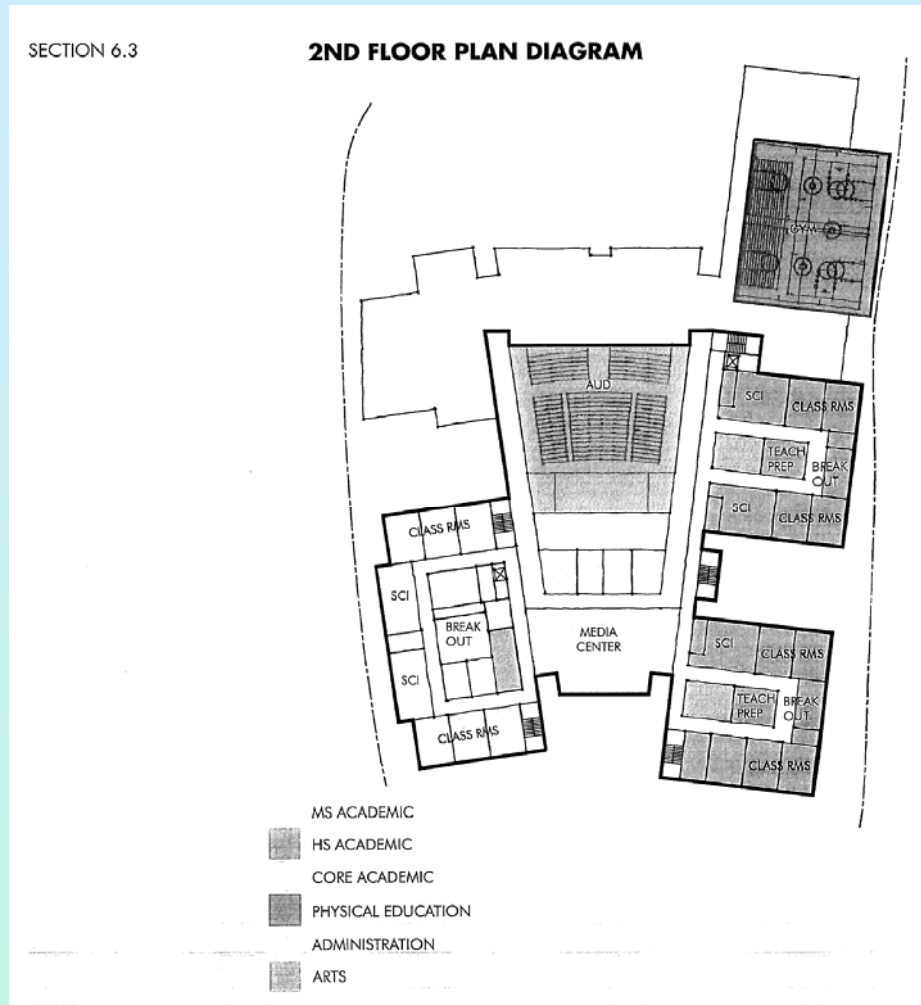




# Southbridge – High School



# Southbridge – High School



# Southbridge – High School

- Built in 1927
- SF of New Combined MS/HS: ~200,000 SF
- Grades: 9-12
- Agreed Upon Enrollment: 1050 (MS/HS)
- Category: Preferred Schematic Design
- Reimbursement Rate: 78.95%

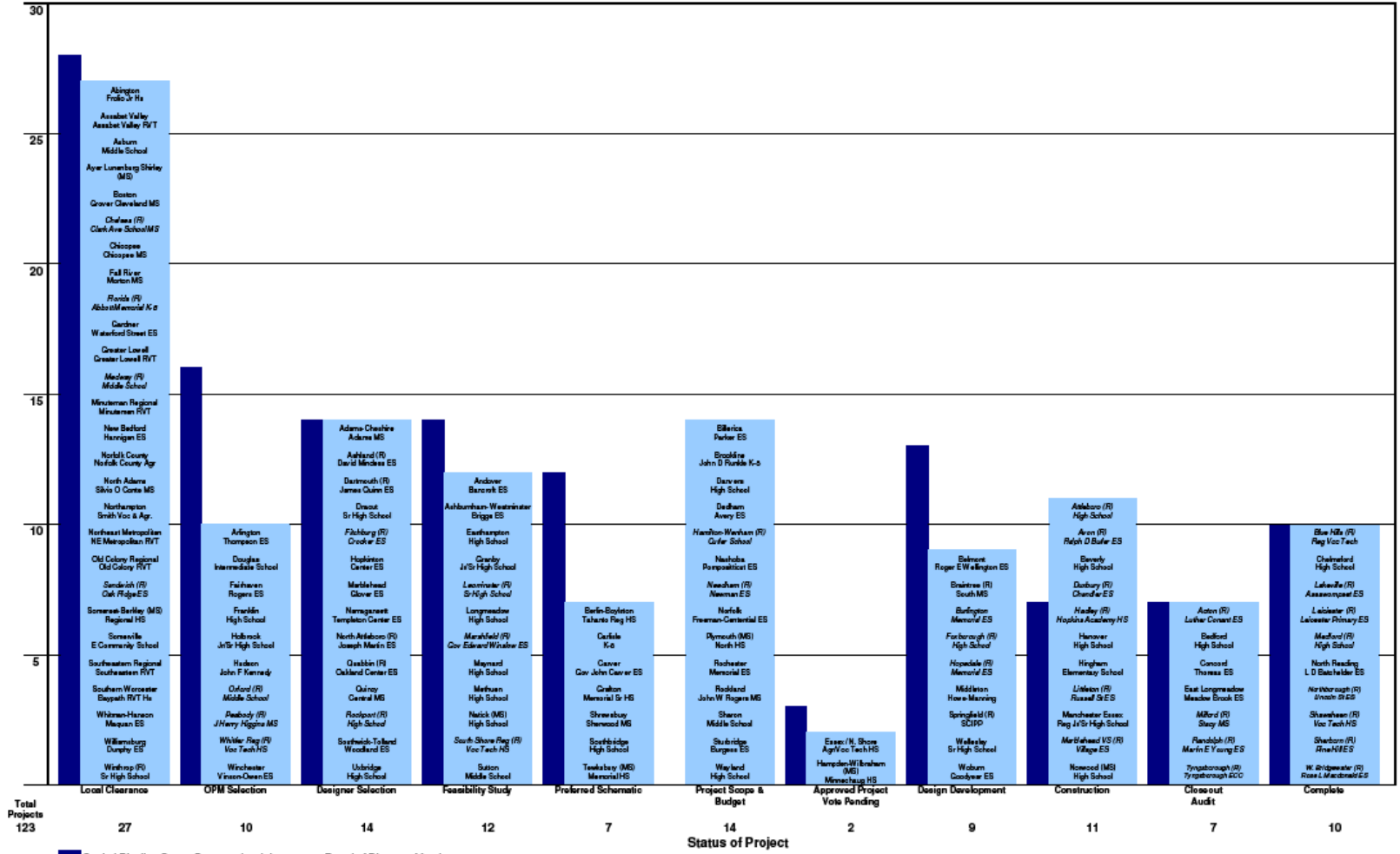
# **PROJECT OVERVIEW REPORT**

## **PROJECT INDICATORS**

# Project Status

Project Status

9/28/2009



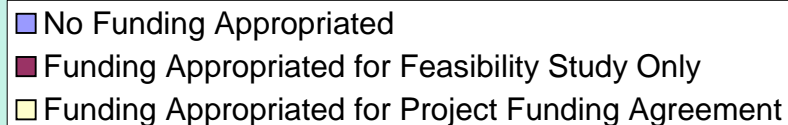
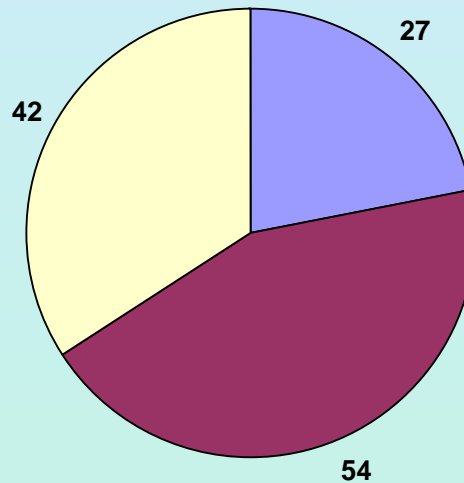
Capital Pipeline Status Presented at July 29, 2009 Board of Directors Meeting  
 (R) – Repair (MS) – Model School  
 Local Clearance - Complete Initial Documentation & Obtain Local Appropriation for Initial Phase only.



# Local Vote Authorization

Of the 123 projects within the MSBA capital pipeline, 27 districts have yet to secure authorization or funding. 54 projects have received authorization and funding for feasibility study only. The remaining 42 projects have received authorization and funding for project funding agreements.

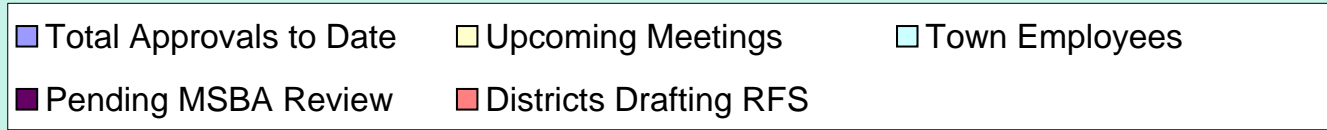
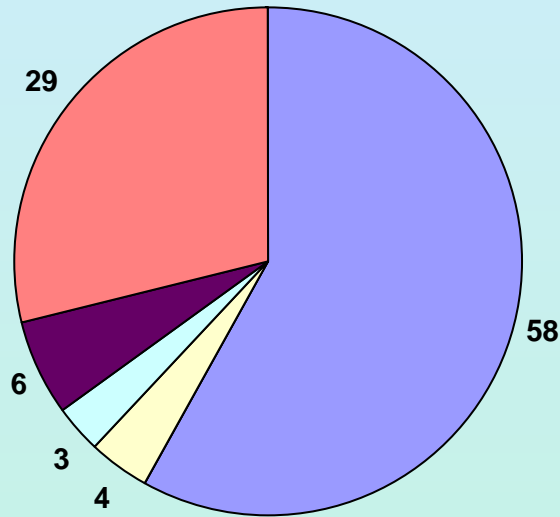
**Local Vote Authorizations**



# Status of OPM Selection September 2009

Approved/Pending Approval – 64.0% of all Districts Requiring an OPM

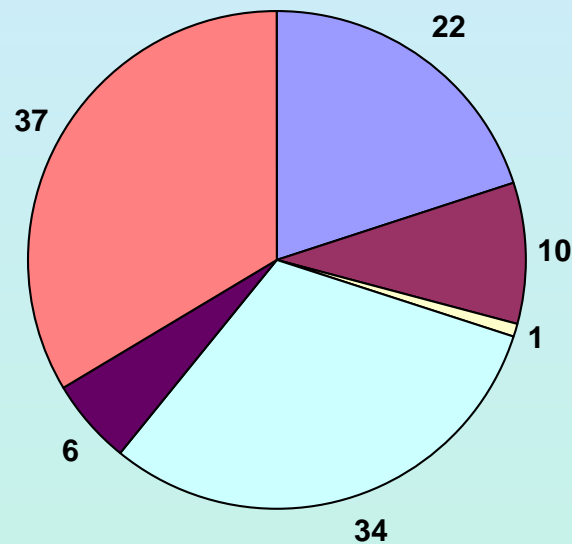
**OPM Selection Status**



# Status of MSBA Designer Selection September 2009

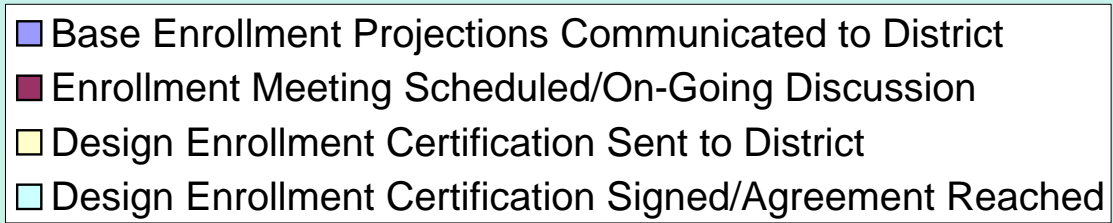
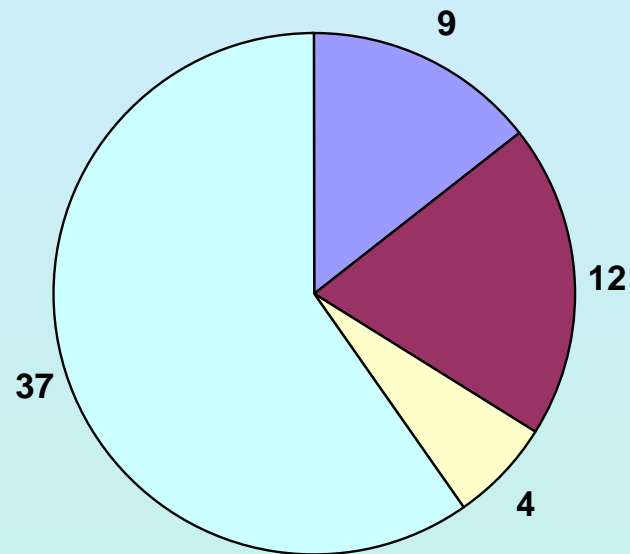
## Designer Selection Panel and Local Designer Selection Status

Approval/Pending - 62.7% of Districts Requiring a Designer



# Enrollment

## Design Enrollment



# Estimated Bid Dates 2009

## 2009 Estimated Construction Bid Dates

Note: Bid dates are estimates ONLY. Please contact the District for the exact information.  
Total Project Budget denotes total District Costs and does not denote the Basis of the MSBA Total Facilities Grant.

■ - Denotes Bid Phase Complete    ■ - Denotes Estimated Bid Dates

DISTRICT	JAN	FEB	MAR	APR	MAY	JUN	JUL	AUG	SEP	OCT	NOV	DEC
<b>MARBLEHEAD</b> Total Project Budget: \$20.8M		■ Village ES Major Repair	■ \$4M Under Estimate									
<b>NORWOOD</b> Total Project Budget: \$79.1M		■	■ Norwood HS New Construction	■ \$10M Under Estimate								
<b>HADLEY</b> Total Project Budget: \$1.7M				■ Hopkins Academy Repair								
<b>LITTLETON</b> Total Project Budget: \$15.1M							■ Russell St ES Repair	■ \$4M Under Estimate				
<b>BRAINTREE</b> Total Project Budget: \$3.0M									■ South MS Repair			
<b>AVON</b> Total Project Budget: \$1.5M				■ Butler ES HVAC								
<b>FOXBOROUGH</b> Total Project Budget: \$20.0M										■ Foxborough HS Repair		
<b>DUXBURY</b> Total Project Budget: \$1.5M					■ Chandler ES Roof Repair			■ \$500K Under Estimate				
<b>HOPEDALE</b> Total Project Budget: \$.8M						■ Memorial ES Roof Repair						
<b>WELLESLEY</b> Total Project Budget: \$132M					■ Wellesley SHS On-Site Parking				■ Wellesley SHS New Construction	■	■	■
<b>ATTLEBORO</b> Total Project Budget: \$7M							■ Attleboro HS Roof Replacement			■ \$1.8M Under Estimate		
<b>HANOVER</b> Total Project Budget: \$55.3M								■ Hanover HS New Construction			■ \$1.8M Under Estimate	

Updated 9-29-09



# Estimated Bid Dates 2010

## 2010 Estimated Bid Dates

Note: Bid dates are estimates ONLY. Please contact the District for the exact information.  
Total Project Budget denotes total District Costs and does not denote the Basis of the MSBA Total Facilities Grant.

DISTRICT	JAN	FEB	MAR	APR	MAY	JUN	JUL	AUG	SEP	OCT	NOV	DEC
<b>BELMONT</b> Total Project Budget: \$40M	Wellington ES New Construction											
<b>WOBURN</b> Total Project Budget: \$26.5M	Goodyear ES New Construction											
<b>MIDDLETON</b> Total Project Budget: \$24.4M	Howe-Manning ES New Construction											
<b>PLYMOUTH</b> Total Project Budget: \$92.2M	North HS New Construction											
<b>BURLINGTON</b> Total Project Budget: \$27.9M	Memorial ES New Construction											
<b>HAMILTON-WENHAM</b> Total Project Budget: \$1.5M	Culter ES Repair											
<b>HAMPDEN-WILBRAHAM</b> Total Project Budget: \$78.9M	Minnechaug HS New Construction											
<b>ROCHESTER</b> Total Project Budget: \$26.5M	Memorial ES Addition/Renovation											
<b>NASHOBA</b> Total Project Budget: \$38.4M				Pompositticut ES Addition/Renovation								
<b>SHARON</b> Total Project Budget: \$42.5M				Middle School Addition/Renovation								
<b>STURBRIDGE</b> Total Project Budget: \$46.9M						Burgess ES Addition/Renovation						
<b>BILLERICA</b> Total Project Budget: \$34M						Parker ES New Construction						
<b>NORFOLK</b> Total Project Budget: \$37.5M							Freeman-Centennial ES New Construction					
<b>DEDHAM</b> Total Project Budget: \$23.4M							Avary ES New Construction					
<b>DANVERS</b> Total Project Budget: \$83.1M							High School Addition/Renovation					
<b>BROOKLINE</b> Total Project Budget: \$29.9M								Runkle ES Addition/Renovation				
<b>ROCKLAND</b> Total Project Budget: \$66.2M									Rogers MS New Construction			
<b>ESSEX-NS</b> Total Project Budget: \$125M											Essex North St	
<b>NEEDHAM</b> Total Project Budget: \$27.4M											Newman	

Updated 8-29-09