
Model School Submissions Elementary & Middle Schools

May 26, 2010

Elementary Schools

11 Schools submitted from 11 Designers:

Firm	School	District	Year Open	Grades Served	Design Enrollment	Gross Sq. Ft.	General Contractor	Date Visited
Architecture Involution, Inc. (Ai3)	Hingham Elementary School	Hingham	2009	PK-6	630	91,350	CTA Construction	May 10, 2010
Dinisco Design	Fort Banks Elementary School	Winthrop	2001	PK-5 intended K-2 actual	650	88,340	TR White	May 5, 2010
Flansburgh Architects	Chickering Elementary School	Dover	2002	PK-5	700	93,000	Peabody	May 6, 2010
HMFH Architects	East Fairhaven Elementary School	Fairhaven	2007	PK-5	475	74,630	Agostini	May 10, 2010
JCJ Architecture and Interiors, Inc.	Northeast Academy Elementary School	Groton, CT	2008	PK-5	450	68,000	Gilbane	
Kaestle Boos Associates, Inc.	Bournedale Elementary School	Bourne	2009	PK-4	497	68,120	Brait Builders	May 10, 2010
Margo Jones Architects, Inc. (Turowski2 as Associate Principal)	Williamstown Elementary School	Williamstown	2002	PK-6	600	89,400	David J. Tierney, Jr.	
Mount Vernon Group Architects	Letourneau Elementary School	Fall River	2006	PK-5	600	94,490	J&J Contractors	
Raymond Design Associates, Inc. (Strekalovsky Architecture, Inc. as associate principal)	Woodward Elementary School	Southborough	2005	2-3	460	68,850	P.J. Stella	May 6, 2010
Symmes, Maini & McKee Associates	Alcott Elementary School	Concord	2004	K-5	520	77,750	Gilbane	May 18, 2010
TLCR Architecture	Fiske Elementary School	Lexington	2007	PK-5	500	52,766	CTA Construction	May 18, 2010

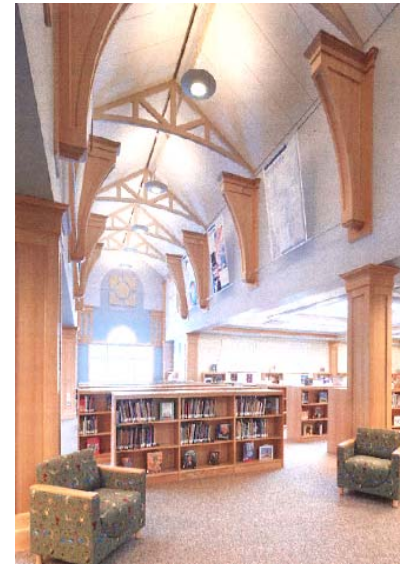
*Shading denotes schools visited. Remaining school visits to be scheduled.

Evaluation Criteria

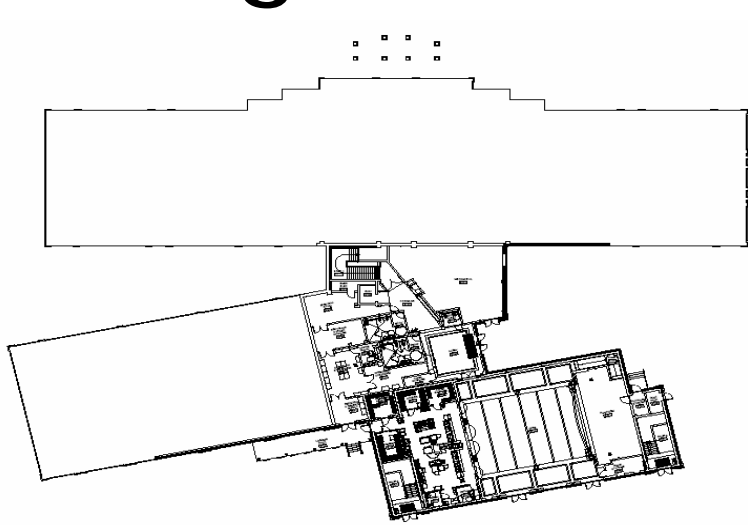
1. Construction Cost (Const cost/SF) adjusted for escalation
 2. Chapter 149/149A/Other
 3. Designer Fee/Basic Services as a % of const cost
 4. Completeness – Change orders as a ratio of const cost
 5. Gross Square Footage per Student
 6. Efficiency
 - a. Net SF
 - b. Gross SF
 - c. Grossing factor
 7. Conformance to MSBA Guidelines
 8. Energy Efficiency/Sustainability (LEED/MA-CHPS)
 9. Flexibility of Design to expand/reduce
 10. Designer's proposed adaptation schedule
 11. MBE/WBE compliance
 12. MSBA Further Analysis
-

Hingham Elementary School

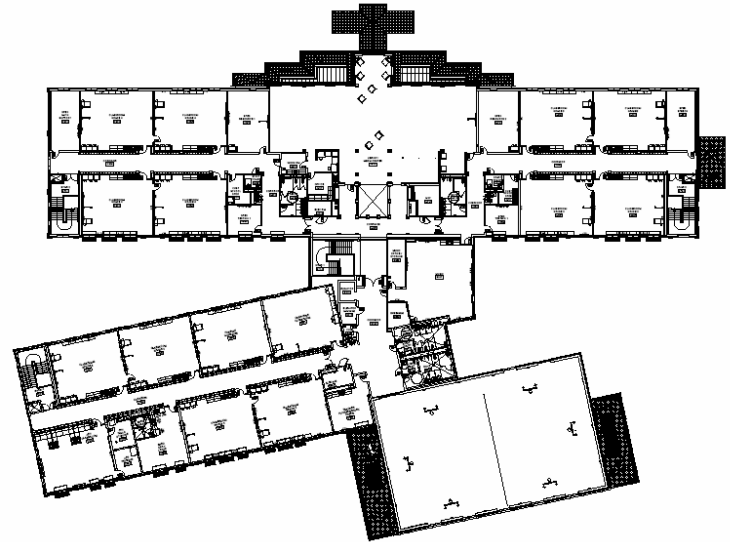
- District: Hingham
- Designer: Ai3 Architects
- Grades served: PK-6
- Design enrollment: 630
- Date visited: May 10, 2010



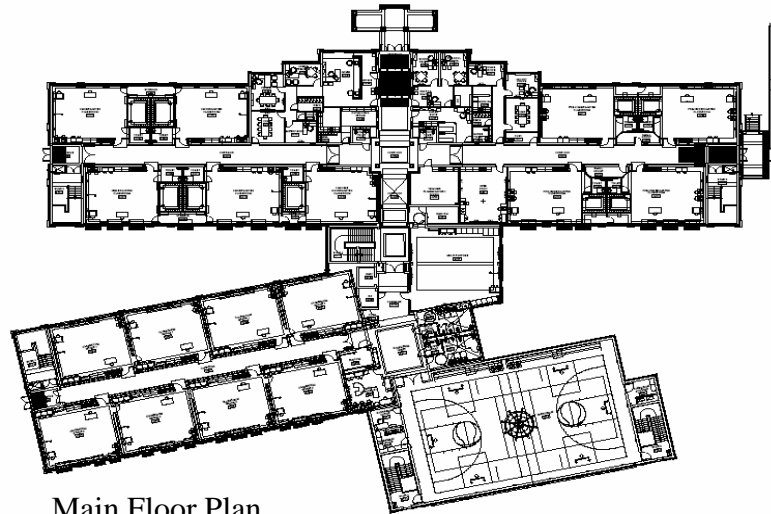
Hingham Elementary School



Lower Floor Plan



Upper Floor Plan



Main Floor Plan

Fort Banks Elementary School

- District: Winthrop
- Designer: Dinisco Design
- Grades served: K-2
- Design enrollment: 650
- Date visited: May 5, 2010



Fort Banks Elementary School



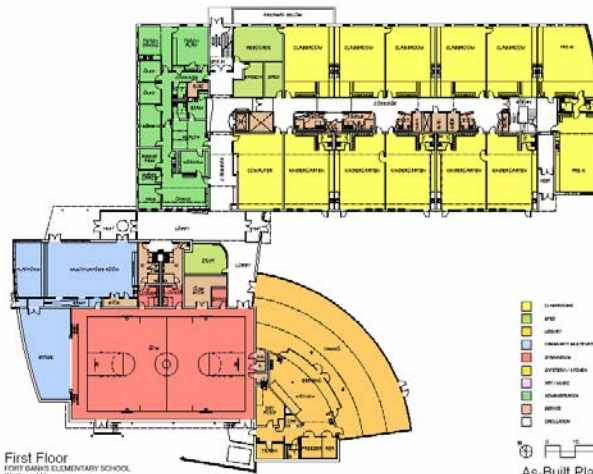
Second Floor
FORT BANKS ELEMENTARY SCHOOL
WORTHING, MA

As-Built Plan



Third Floor
FORT BANKS ELEMENTARY SCHOOL
WORTHING, MA

As-Built Plan



First Floor
FORT BANKS ELEMENTARY SCHOOL
WORTHING, MA

As Built Plan

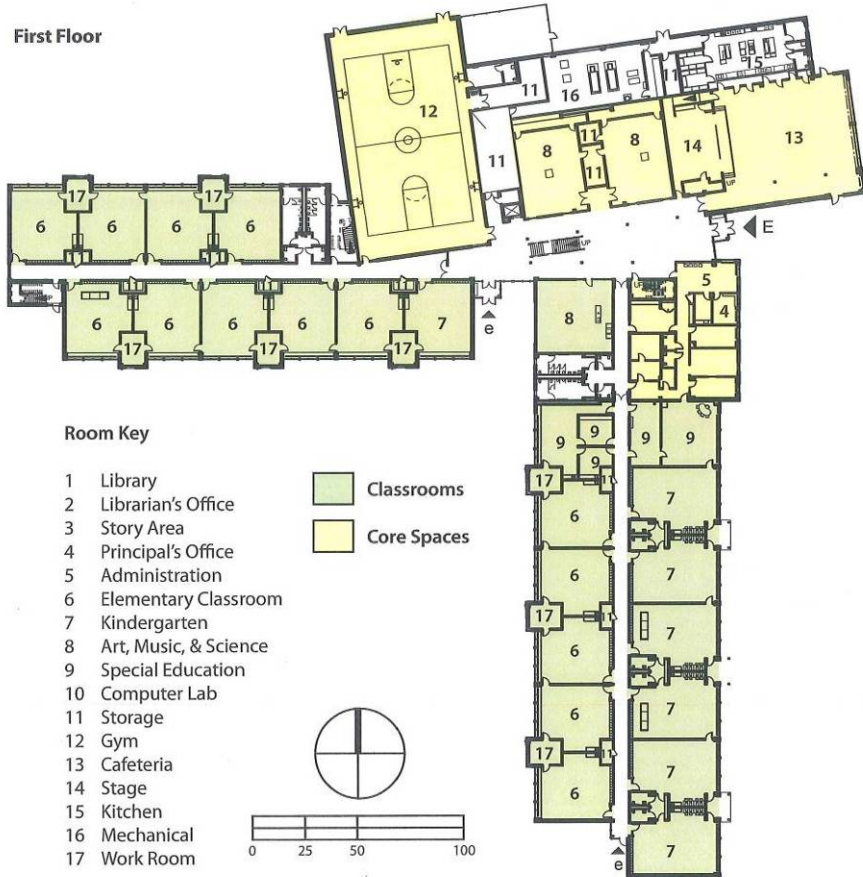
Chickering Elementary School

- District: Dover
- Designer: Flansburgh Architects
- Grades served: PK-5
- Design enrollment: 700
- Date visited: May 6, 2010

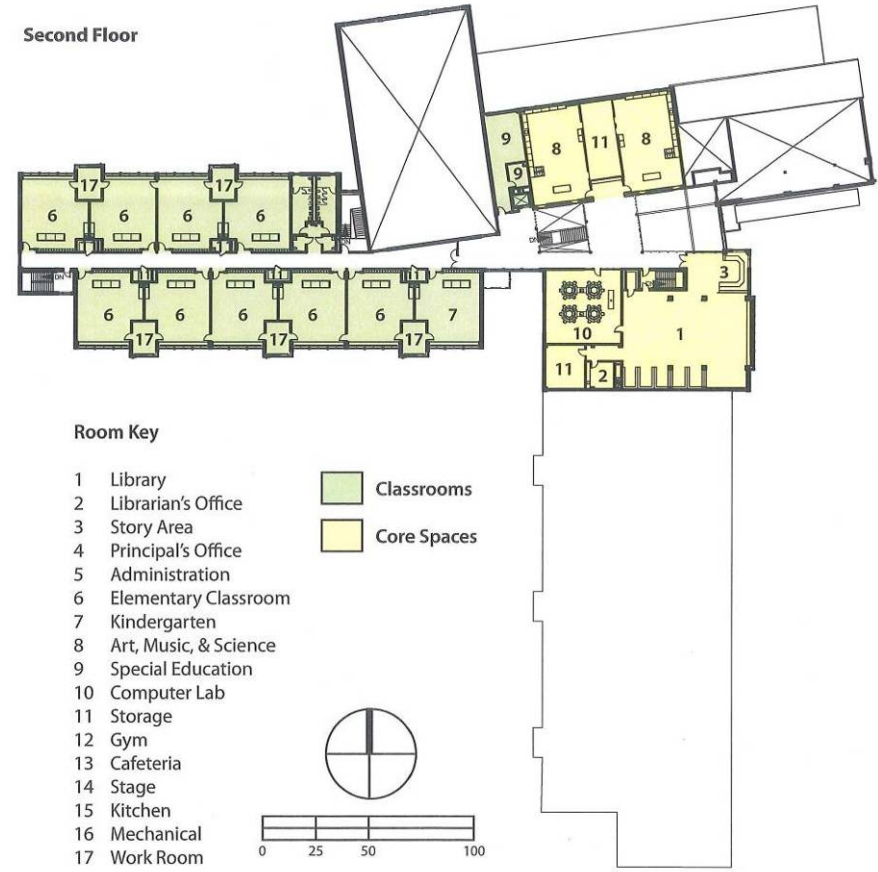


Chickering Elementary School

First Floor



Second Floor

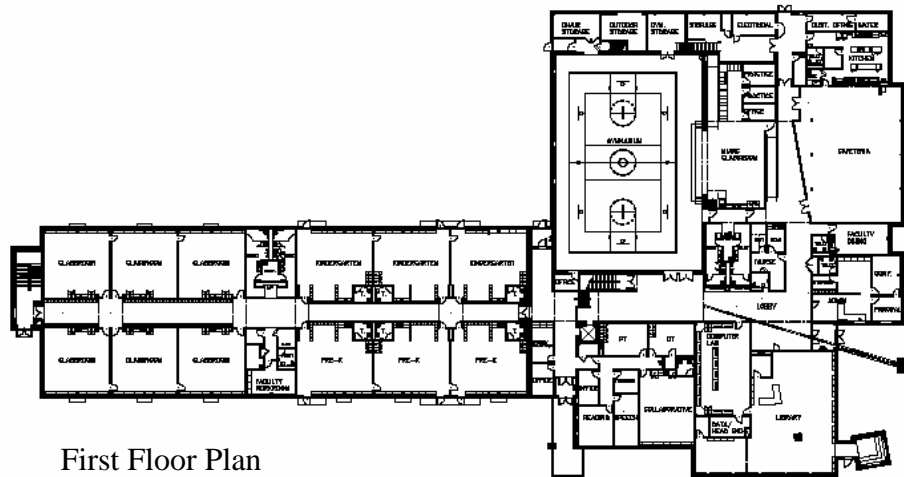
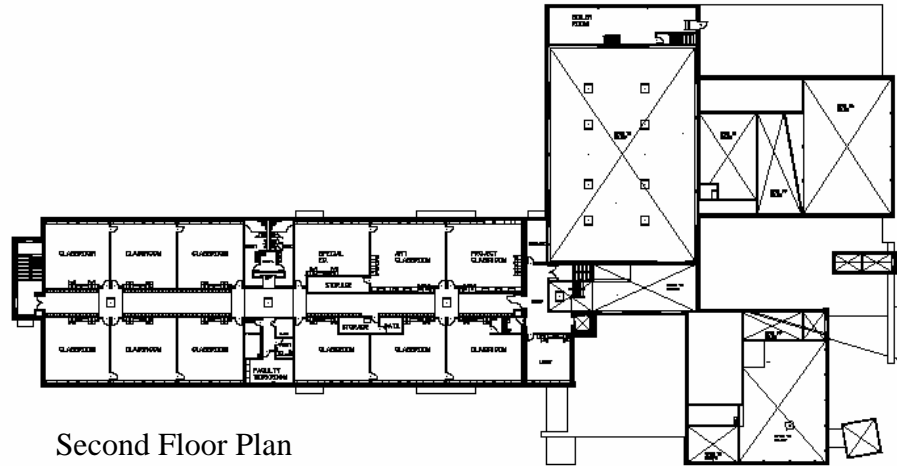


East Fairhaven Elementary School

- District: Fairhaven
- Designer: HMFH Architects
- Grades served: PK-5
- Design enrollment: 475
- Date visited: May 10, 2010



East Fairhaven Elementary School

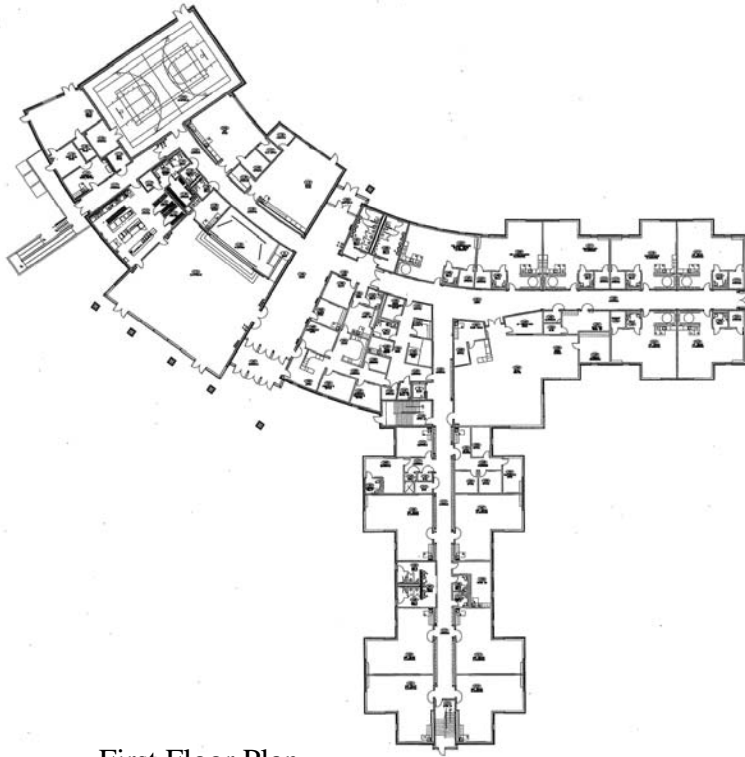


Northeast Academy Elementary School

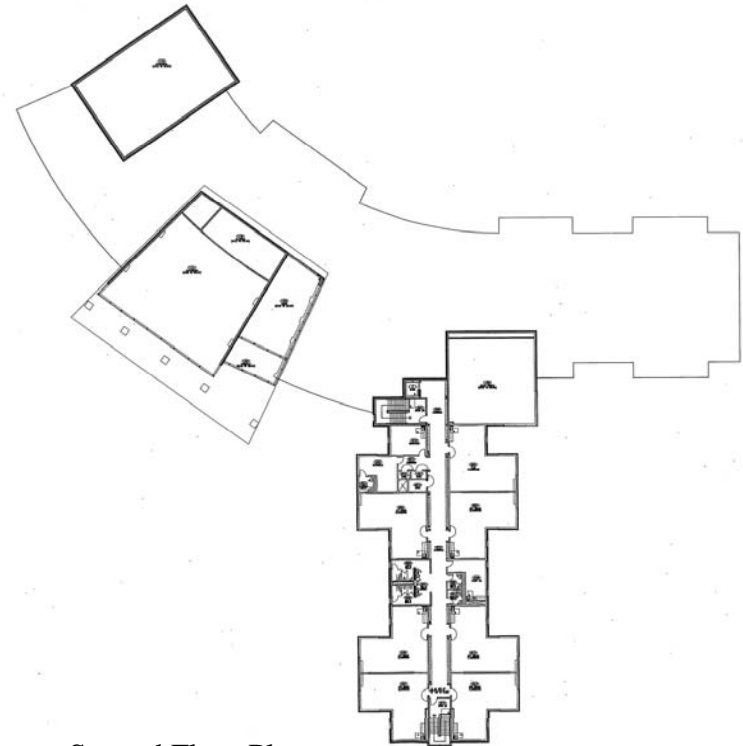
- District: Groton, CT
- Designer: JCJ Architecture and Interiors, Inc.
- Grades served: PK-5
- Design enrollment: 450
- Visit – to be scheduled



Northeast Academy Elementary School



First Floor Plan



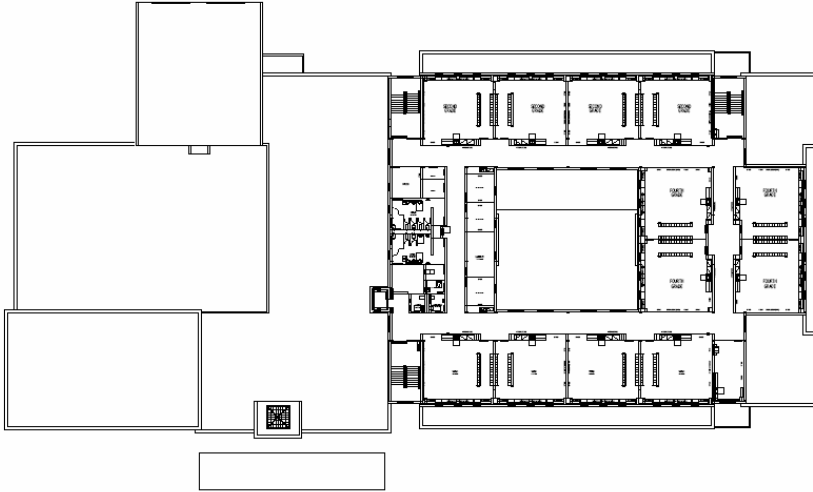
Second Floor Plan

Bournedale Elementary School

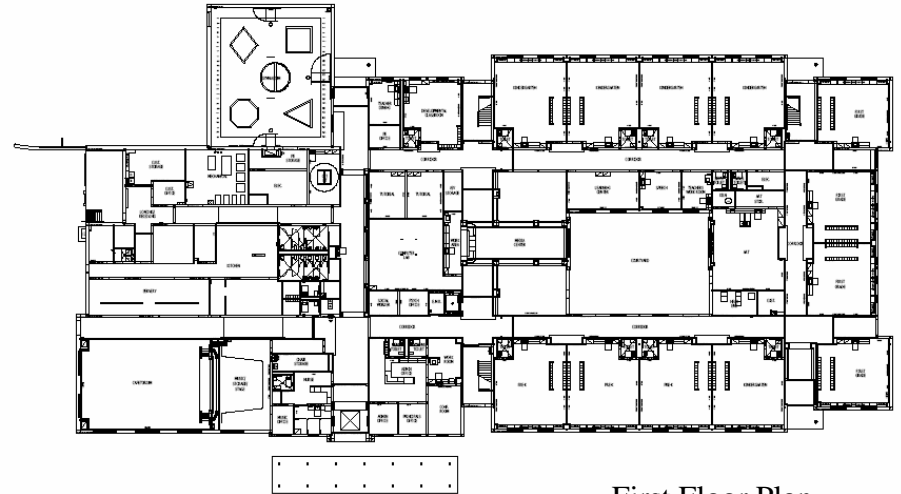
- District: Bourne
- Designer: Kaestle Boos Architects
- Grades served: PK-4
- Design enrollment: 650
- Date visited: May 10, 2010



Bournedale Elementary School



Second Floor Plan



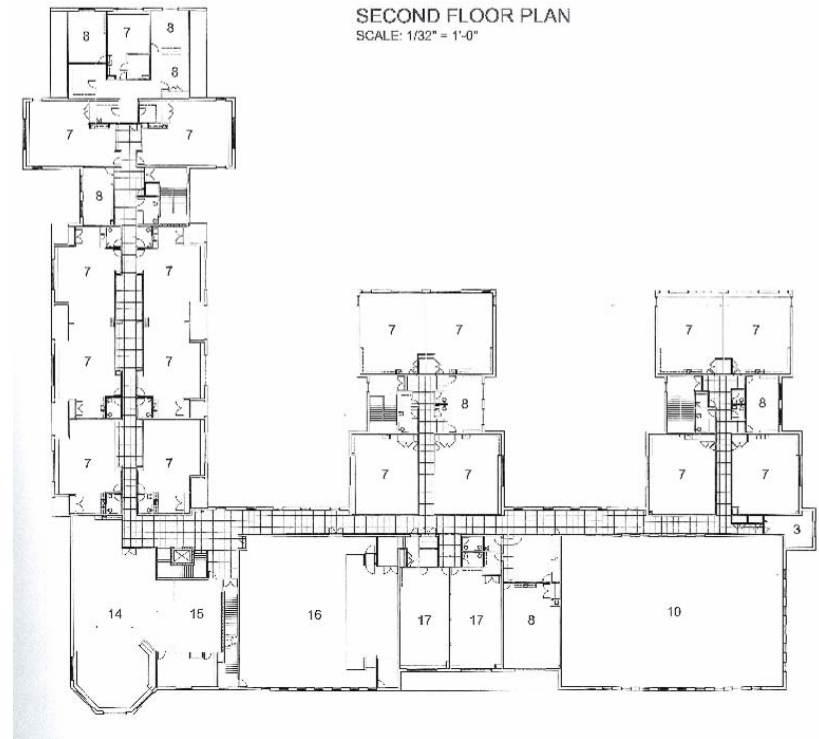
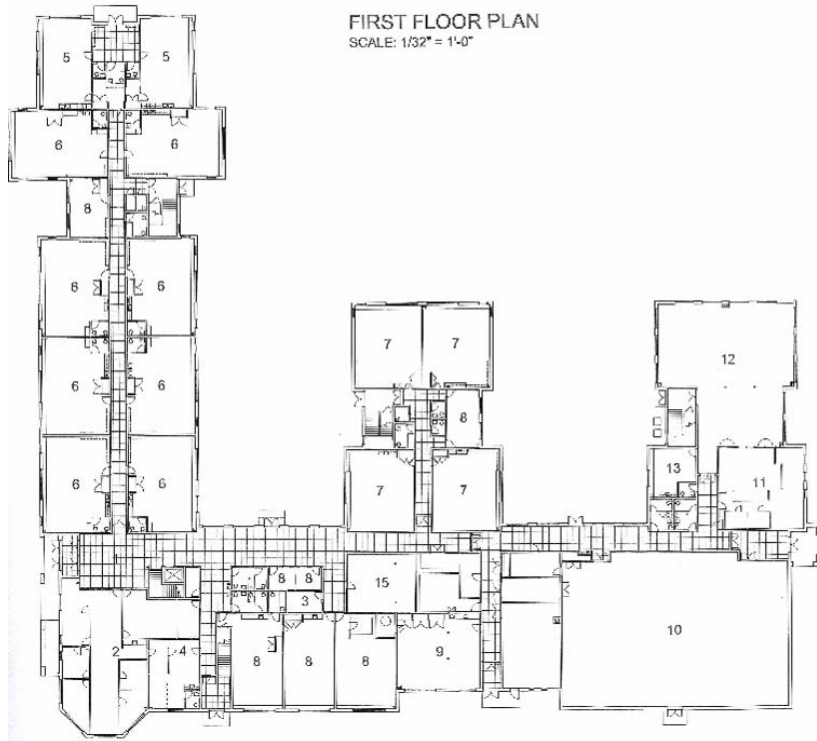
First Floor Plan

Williamstown Elementary School

- District: Williamstown
- Designer: Margo Jones Architects, Inc.
- Grades served: PK-6
- Design enrollment: 600
- Visit – to be scheduled



Williamstown Elementary School



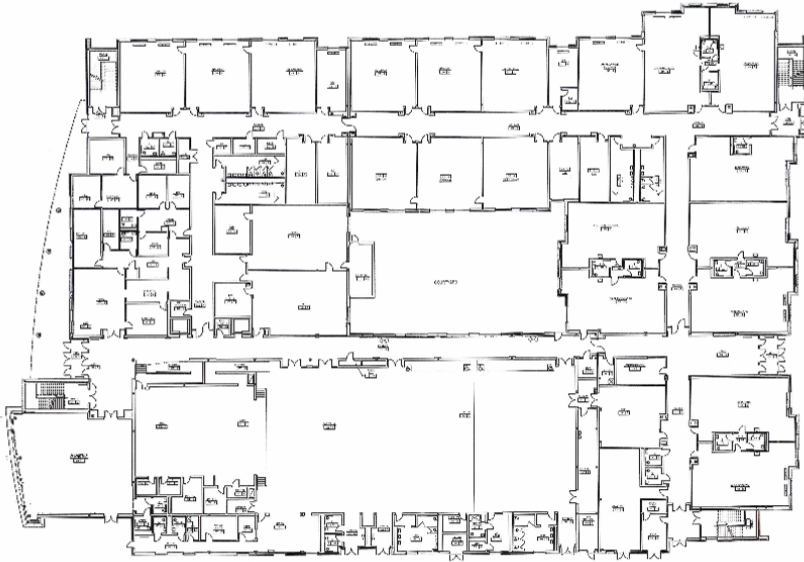
Letourneau Elementary School

- District: Fall River
- Designer: Mount Vernon Group Architects
- Grades served: PK-5
- Design enrollment: 600
- Visit – to be scheduled



Letourneau Elementary School

First Floor Plan



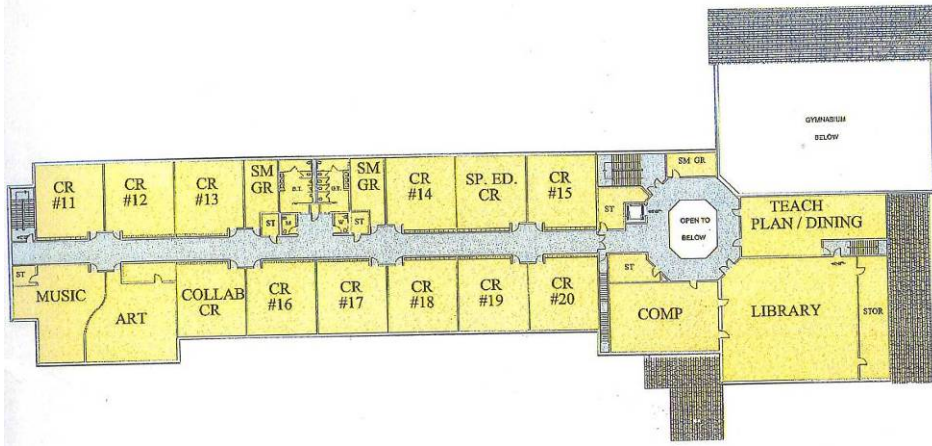
Second Floor Plan

Woodward Elementary School

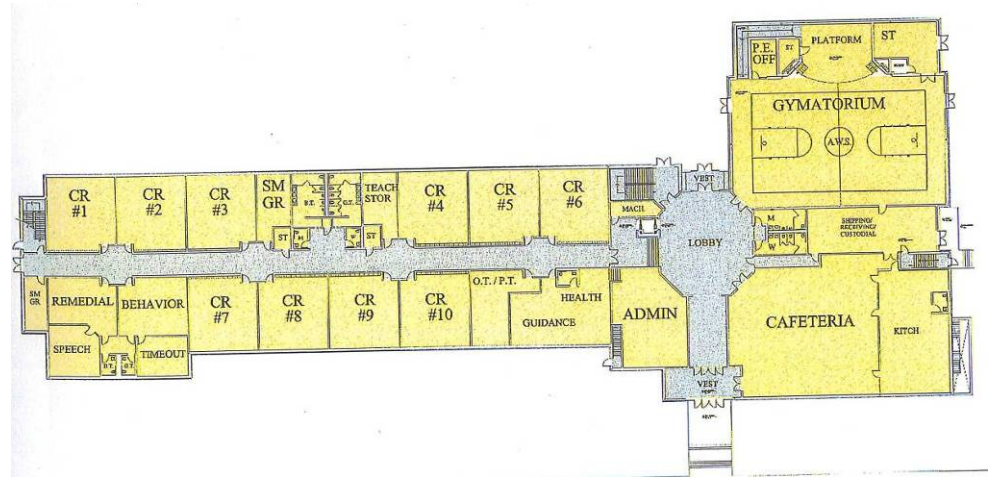
- District: Southborough
- Designer: Raymond Design Associates
- Grades served: 2-3
- Design enrollment: 460
- Date visited: May 6, 2010



Woodward Elementary School



Second Floor Plan



First Floor Plan

Alcott Elementary School

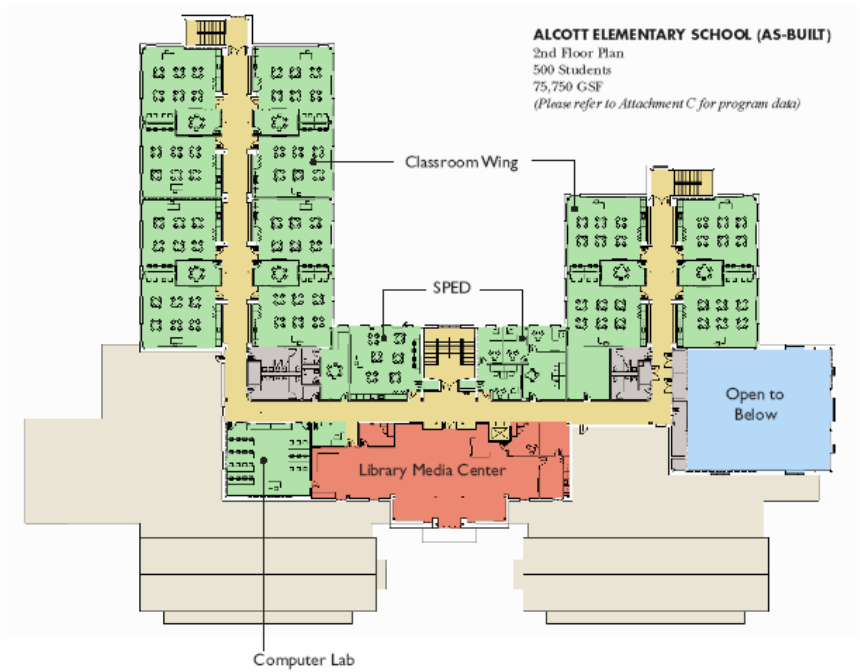
- District: Concord
- Designer: SMMA
- Grades served: K-5
- Design enrollment: 520
- Date visited: May 18, 2010



Alcott Elementary School



First Floor Plan



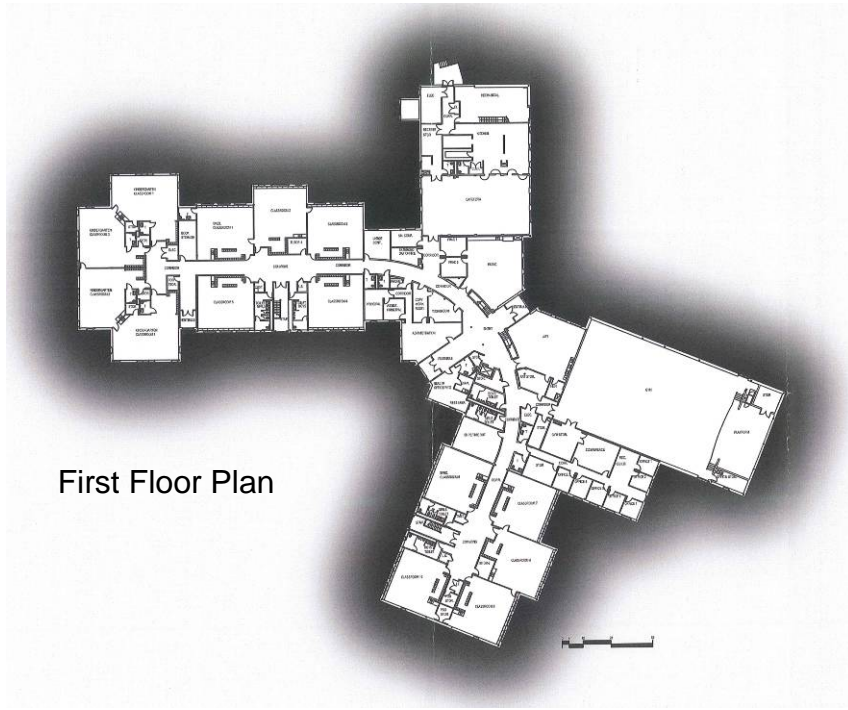
Second Floor Plan

Fiske Elementary School

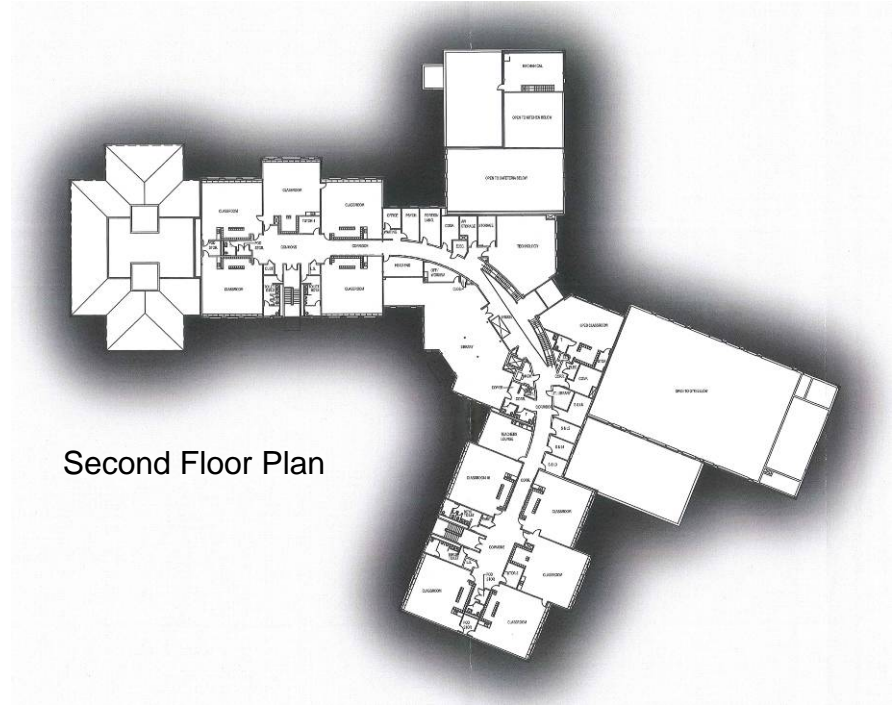
- District: Lexington
- Designer: TLCR
Architecture
- Grades served: PK-5
- Design enrollment: 500
- Date visited: May 18, 2010



Fiske Elementary School



First Floor Plan



Second Floor Plan

Middle Schools

6 Schools submitted from 4 Designers:

Firm	School	District	Year Open	Grades Served	Design Enrollment	Gross Sq. Ft.	General Contractor	Date Visited
Architecture Involution, Inc. (Ai3)	Lynnfield Middle School	Lynnfield	2003	5-8	687	110,170	Eastern	May 5, 2010
Architecture Involution, Inc. (Ai3)	Wilson Middle School	Natick	2003	5-8	900	134,500	J&J Contractors	May 6, 2010
Architecture Involution, Inc. (Ai3)	Woonsocket Middle School	Woonsocket, RI	2010	6-8	880	128,835	Gilbane	May 14, 2010
Kaestle Boos Associates, Inc.	Westerly Middle School	Westerly, RI	2005	6-8	900	149,490	Gilbane	May 14, 2010
Mount Vernon Group Architects	Keith Middle School	New Bedford	2006	6-8	1,400	237,825	Agostini	

ELEMENTARY/MIDDLE SCHOOLS

Firm	School	District	Year Open	Grades Served	Design Enrollment	Gross Sq. Ft.	General Contractor	Date Visited
Symmes, Maini & McKee Associates	Dr. Albert F. Argenziano School at Lincoln Park	Somerville	2007	K-8	600	106,075	J&J Contractors	

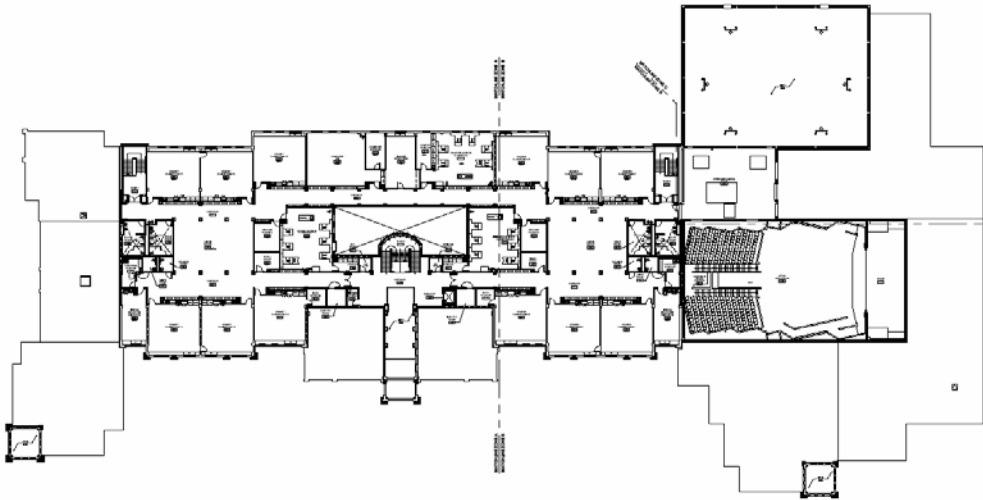
*Shading denotes schools visited. Remaining school visits to be scheduled.

Lynnfield Middle School

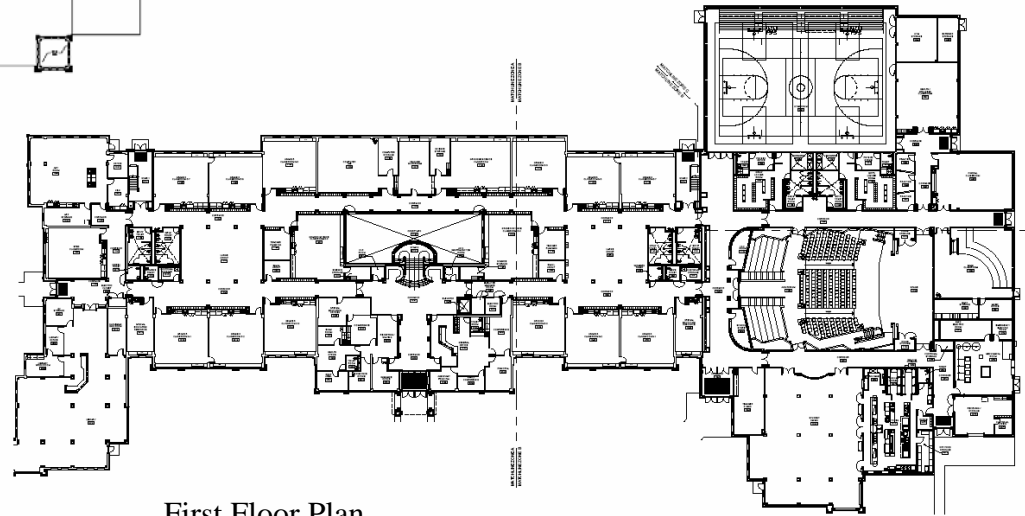
- District: Lynnfield
- Designer: Ai3 Architects
- Grades served: 5-8
- Design enrollment: 687
- Date visited: May 5, 2010



Lynnfield Middle School



Second Floor Plan



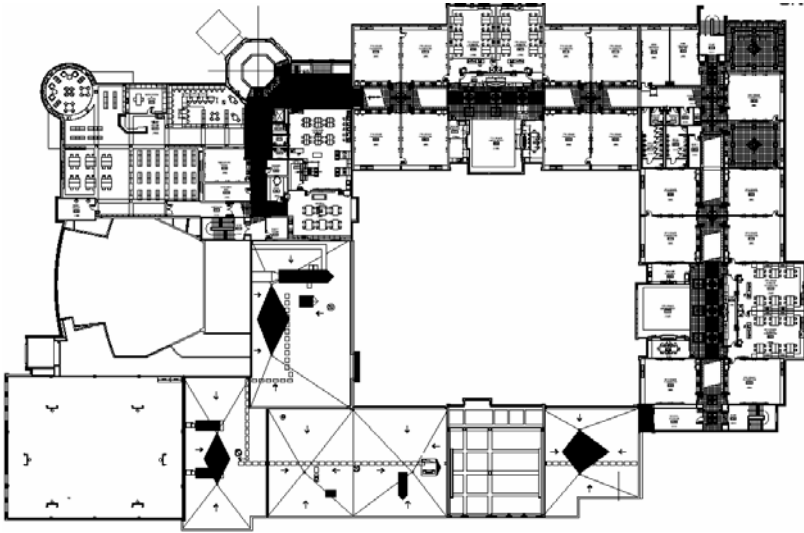
First Floor Plan

Wilson Middle School

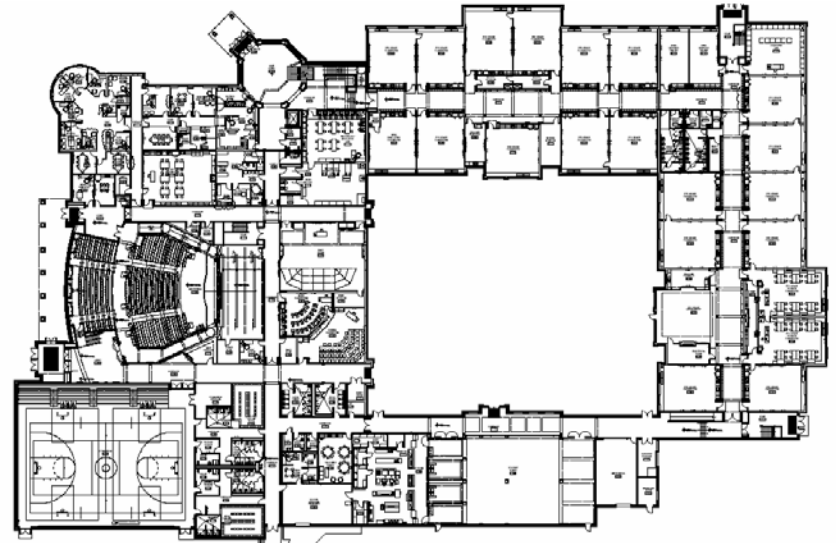
- District: Natick
- Designer: Ai3 Architects
- Grades served: 5-8
- Design enrollment: 900
- Date visited: May 6, 2010



Wilson Middle School



Second Floor Plan



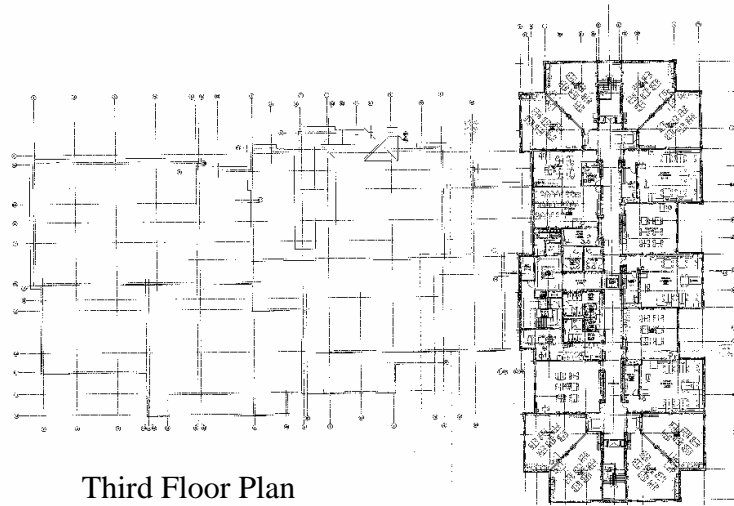
First Floor Plan

Woonsocket Middle School

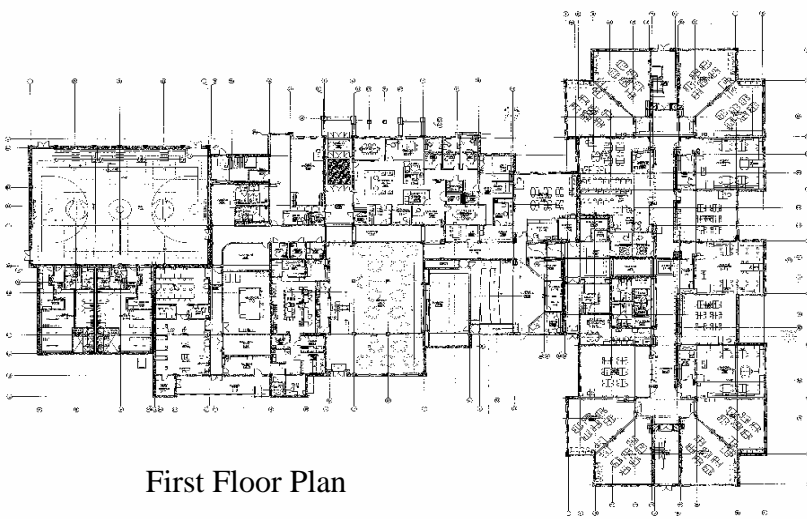
- District: Woonsocket, RI
- Designer: Ai3 Architects
- Grades served: 6-8
- Design enrollment: 880
- Date visited: May 14, 2010



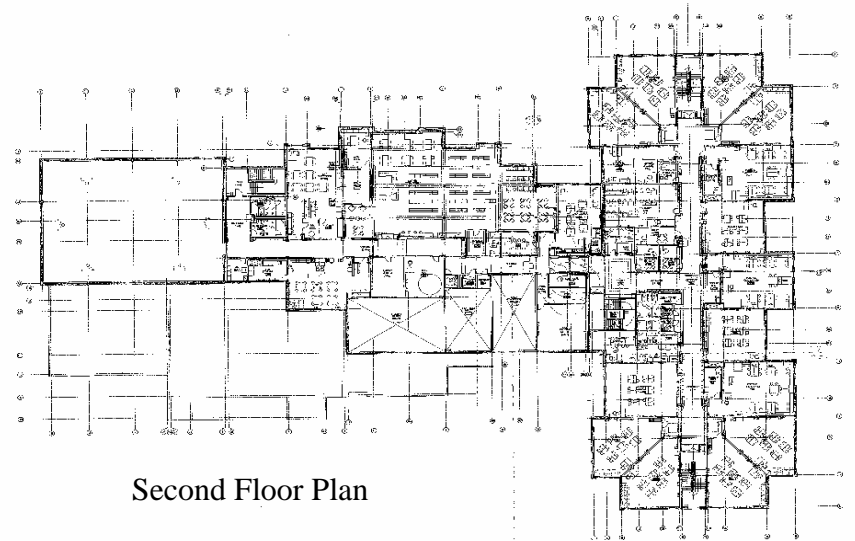
Woonsocket Middle School



Third Floor Plan



First Floor Plan



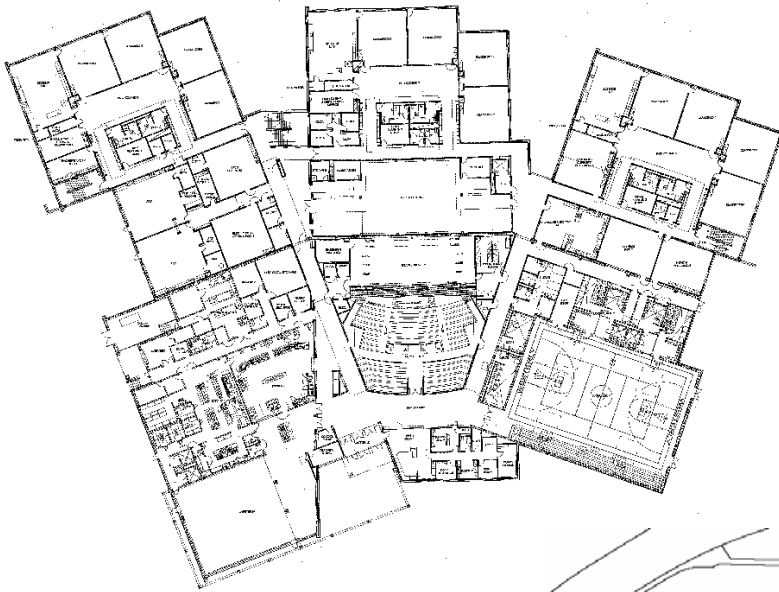
Second Floor Plan

Westerly Middle School

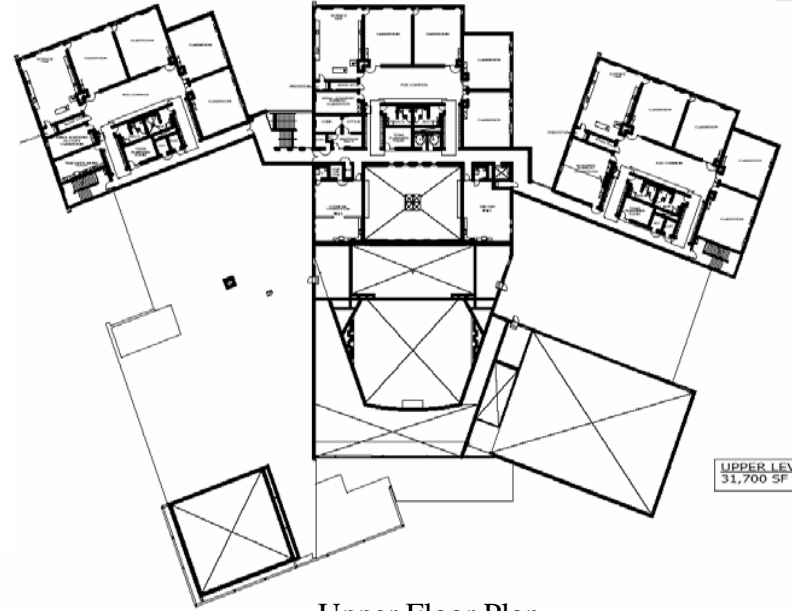
- District: Westerly, RI
- Designer: Kaestle Boos Associates, Inc.
- Grades served: 6-8
- Design enrollment: 900
- Date visited: May 14, 2010



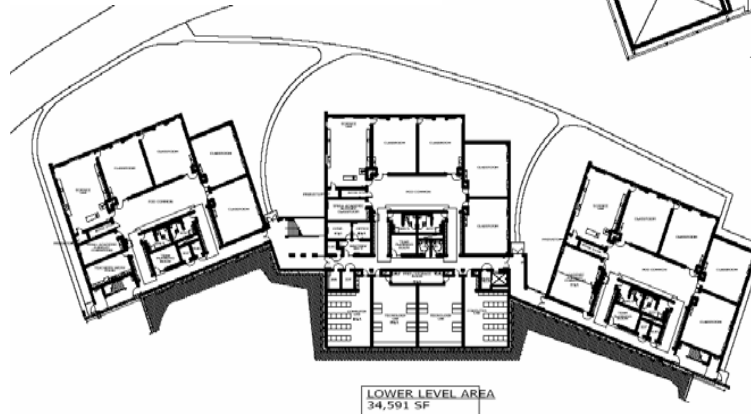
Westerly Middle School



Main Floor Plan



Upper Floor Plan



Lower Floor Plan

Keith Middle School

- District: New Bedford
- Designer: Ai3 Architects
- Grades served: 6-8
- Design enrollment: 1,400
- Visit – to be scheduled



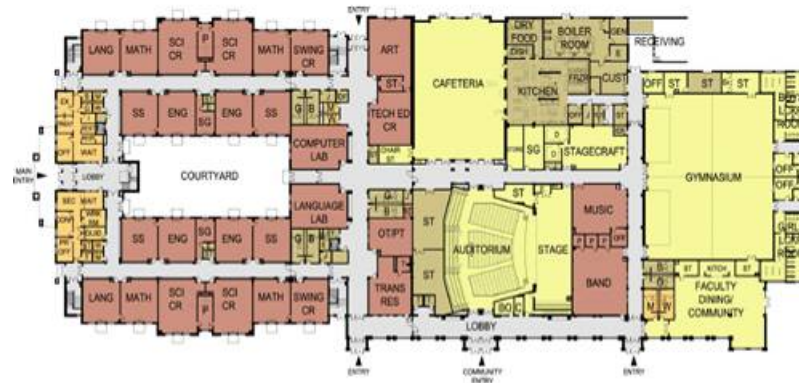
Keith Middle School



Second Floor Plan



Third Floor Plan



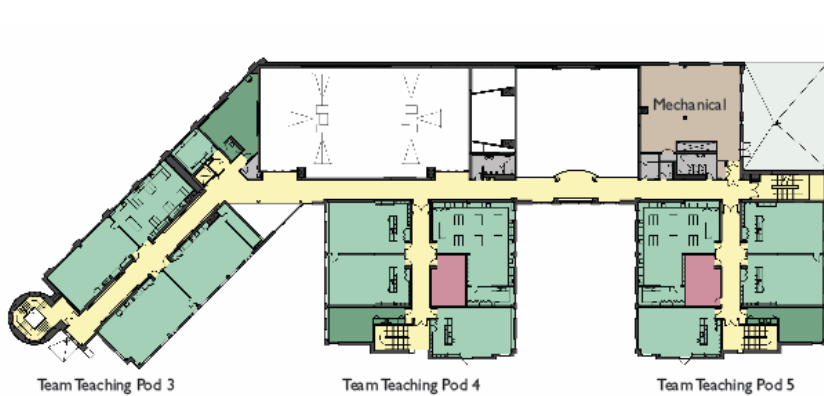
First Floor Plan

Dr. Albert Argenziano School at Lincoln Park

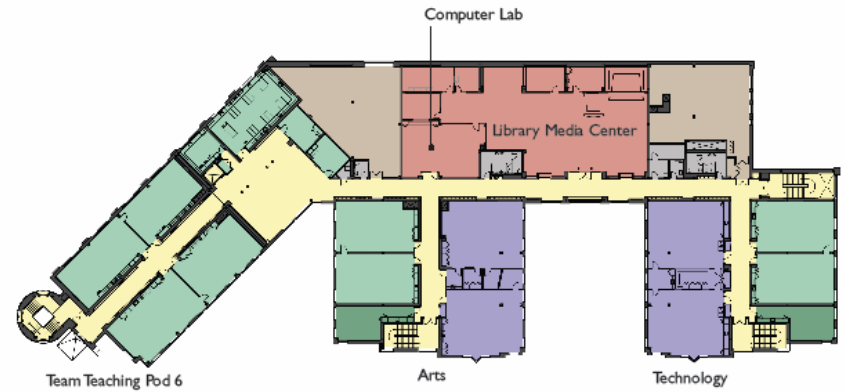
- District: Somerville
- Designer: SMMA
- Grades served: K-8
- Design enrollment: 600
- Visit – to be scheduled



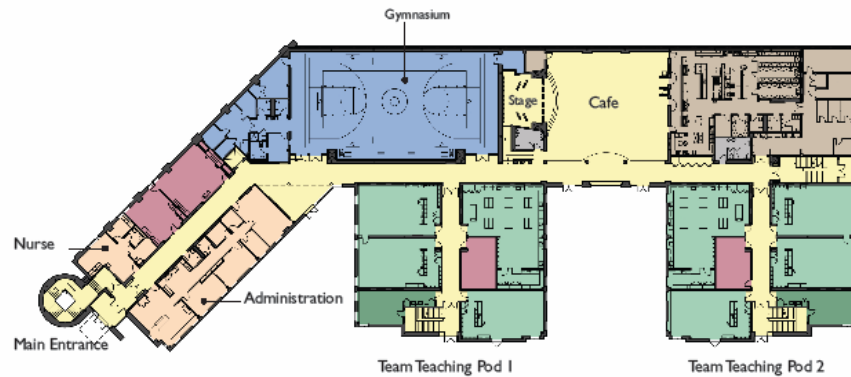
Dr. Albert Argenziano School at Lincoln Park



Second Floor Plan



Third Floor Plan



First Floor Plan