

Massachusetts School Building Authority

Steven Grossman
Chairman, State Treasurer

Katherine Craven
Executive Director



Board Meeting

September 28, 2011

September 28, 2011

www.MassSchoolBuildings.org



Table of Contents

- Executive Director Report
 - Project Visits
 - Science Lab Initiative
 - Eligibility Period Changes
- Project Votes
- Project Status Update
- Audit Status Update
- Finance Update



Project Visits

Since the July 27th Board meeting, the MSBA has visited 59 Districts

Senior Studies	Project Visits	Project Visits	Project Visits	Town Meetings / Topping Off Ceremony
Agawam Bedford Bellingham Marlborough Milford Millis Norwood Pathfinder VTHS Southhampton Swampscott Waltham	Berlin-Boylston Beverly Billerica Brookline Burlington Carlisle Danvers Foxboro Franklin Georgetown Grafton Hampden-Wilbraham Leominster	Longmeadow Lowell Malden Marshfield Methuen Middleton Nashoba Natick Needham Norfolk Northboro Plymouth Rochester Rockland	Sharon Shawsheen VTHS Shrewsbury Southbridge South Shore RVTHS Springfield - Putnam VTHS Sturbridge Sutton Taunton Tewksbury Wayland Wellesley Whitman-Hanson Woburn	Belmont Burlington East Bridgewater Maynard Norwood Shawsheen VTHS Worcester



Project Visits

Upcoming events anticipated in October and November

Senior Studies	Project Visits	Project Visits	Appropriation Votes	Groundbreakings / Check Presentations / Topping Off Ceremonies
Dennis - Yarmouth North Attleborough	Adams - Cheshire Beverly Billerica Brookline Burlington Carlisle Danvers Easthampton Grafton Hampden - Wilbraham Leominster Longmeadow	Malden Natick Norfolk Rockland Sharon Southbridge Springfield Sturbridge Sutton Uxbridge Wellesley Worcester	<p style="text-align: center;"><u>October</u></p> Greater Lawrence VTHS Lynn	Rochester



MSBA Science Lab Initiative

- Science Lab Initiative will be a competitive grant program open to districts with schools that serve high school students
- Initiative will further the work of the MSBA's Science Lab Task Force by investing \$60 million in prototype designs for high school science labs
 - Funds available from balance of Qualified School Construction Bonds
- Unique opportunity for districts to enhance learning environments and facilitate delivery of 21st century science curriculum through focused capital spending
- Interested districts will submit an SOI with pertinent information; science lab component will be evaluated by an advisory group that will:
 - Consist of MSBA Board, MSBA staff, and industry professionals
 - Make recommendations to Board on projects that merit consideration for competitive funding



MSBA Guidelines for High School Science Labs

Prototype Design Requirements:

- 60 net square feet per student
- Flexible layout tied to district's science department educational plan
- Combined laboratory and lecture rooms
- Peripheral or ceiling utilities
- No fixed casework in central floor area

Recommended Best Practices Address:

- Table height
- Types of utilities
- Sink width and depth
- Window treatments
- Prep room characteristics



Science Lab Fly-Through

Fly-Through represents MSBA science lab design requirements and best practices:

- A pair of lecture/lab classrooms based on the MSBA prototype designs
- A typical shared prep room with fume hoods and standard equipment such as a refrigerator, dishwasher, and chemical storage cabinets
- Room layouts showing how the lecture and lab furniture configurations work with flexible table configuration and perimeter lab utilities



Eligibility Period

- To further maximize MSBA resources, MSBA is formalizing and streamlining early stages of process with an Eligibility Period.
 - **Invitation to Eligibility Period:** Based on review of district's Statement of Interest (SOI) and staff due diligence and recommendations, Board may vote to invite district to Eligibility Period.
 - **270 Days:** Districts invited to Eligibility Period will have 270 days to complete preliminary requirements, including completing Initial Compliance Certification (30 days), School Building Committee (60 days), Capital Budget Statement, Maintenance documentation, Enrollment Certification, and local approvals and appropriations.
 - Same preliminary requirements as current process.



Eligibility Period (continued)

- **Invitation to Feasibility Study:** Districts that successfully complete the preliminary requirements within the 270-day Eligibility Period are eligible to receive invitation to Feasibility Study. Districts that do not successfully complete the preliminary requirements within 270 days will have to re-file an SOI during next SOI opening.
 - Invitation to Eligibility Period is not an Invitation to Feasibility Study, and it does not guarantee an invitation to the MSBA's capital pipeline.
 - SOI expires after 270 days if district has not successfully completed preliminary requirements.



Eligibility Period - Benefits

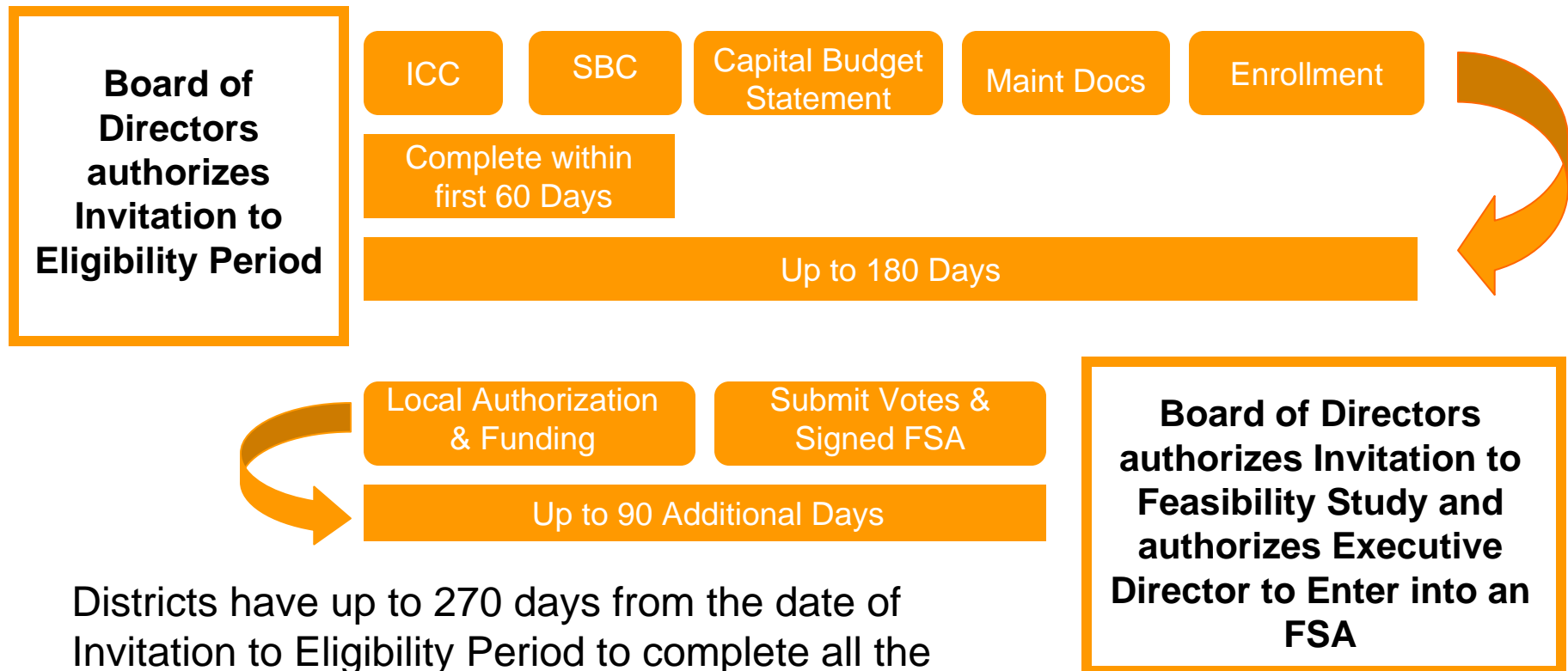
Eligibility Period will:

- Allow MSBA to better manage its financial resources by identifying early in the process districts who are ready to manage and fund a capital improvement project.
- Help determine a district's financial and community readiness to enter the capital pipeline.
- Assist districts locally by providing a definitive schedule and identifying needs for planning and budgeting.

Districts that are able to successfully complete the preliminary requirements in less than 270 days may receive an invitation earlier than 270 days as determined by the MSBA.



Eligibility Period – Up to 270 days



Districts have up to 270 days from the date of Invitation to Eligibility Period to complete all the defined requirements. With the exception of the SBC and ICC which must be completed within the first 60 days of the invitation, the remaining requirements can be processed concurrently.



Preferred Schematic

Vote - Preferred Schematic Design													
District	School	Age of Existing Building	Grade	2010/2011 enroll.	Proj. Enroll	Existing Sq.Ft.	Proposed New Square Footage	Current MSBA Category	Proposed Scope of Project	Estimated Construction Cost of Preferred Schematic	MSBA Total Facility Grant Basis	Reimbursement Rate Before Incentives	Approx. Total Grant amount
North Reading	North Reading High School	1955	9-12	708	1,370	110,000	269,989	Feasibility Study	Addition/Renovation	\$80,135,081	TBD	45.11%	TBD
Southwick-Tolland Regional School District	Southwick-Tolland High School	1959	9-12	553	790	106,995	169,000	Feasibility Study	Addition/Renovation	\$49,569,700	TBD	TBD	TBD
Stoneham	Stoneham Middle School	1954	6-8	585	775	115,980	136,573	Feasibility Study	Addition/Renovation	\$30,239,475	TBD	50.58%	TBD
Williamsburg	Anne T. Dunphy Elementary School	1953	3-6	74	170	21,935	38,038	Feasibility Study	Addition/Renovation	\$9,896,032	TBD	56.89%	TBD



Preferred Schematic | North Reading

North Reading High School

- Built in 1955
- Grades 6-12*
- Enrollment: 1,370*
- Proposed scope of project: Addition/Renovation to middle school creating a new integrated Middle/High School
- Existing square footage: 110,000 sf (HS only)
- Total square footage of proposed project: 269,592 sf
- Estimated construction cost of preferred schematic: \$80,135,081

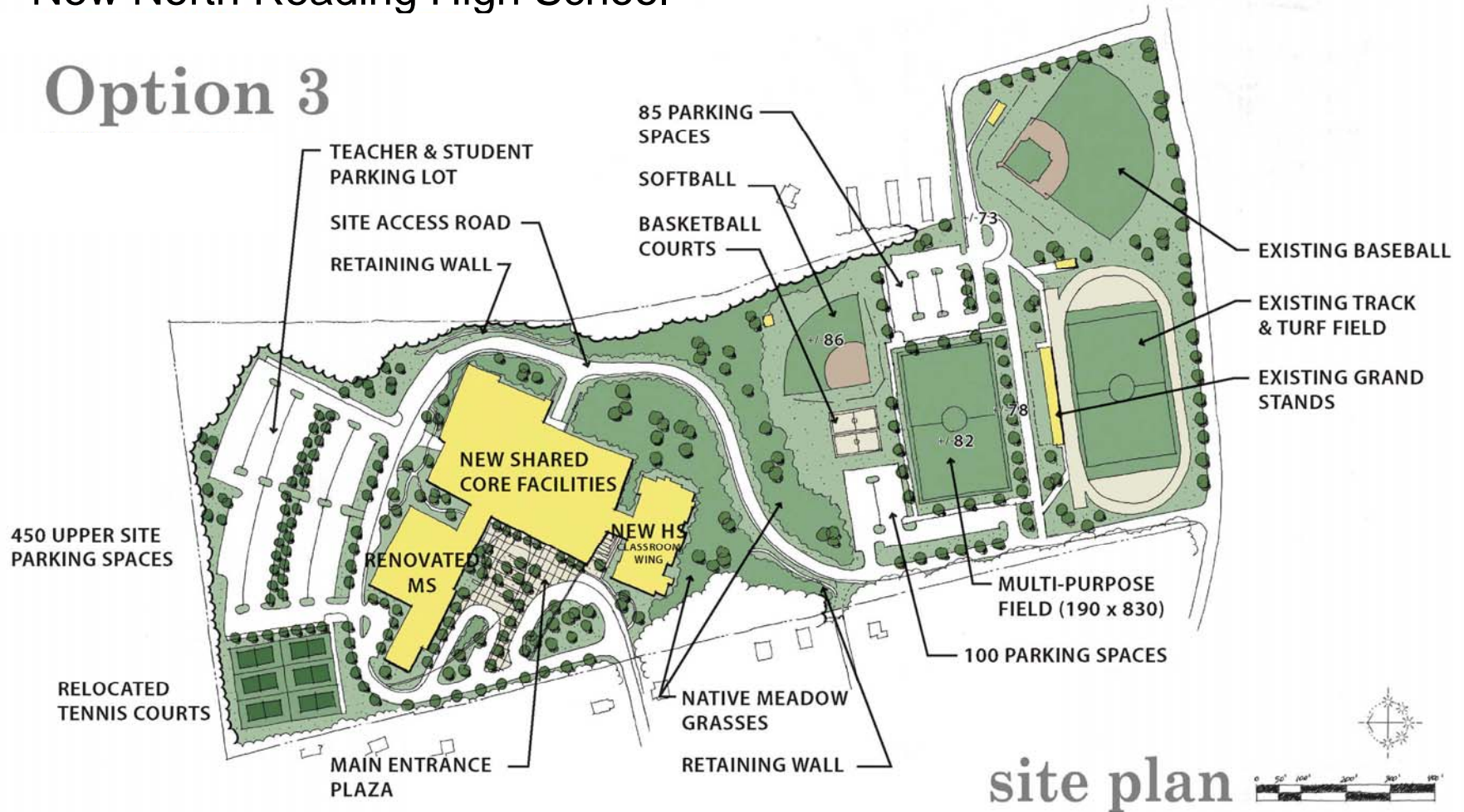
*Existing School houses grades 9-12 with a 2010-11 enrollment of 708



Preferred Schematic | North Reading

New North Reading High School

Option 3





Preferred Schematic | Southwick-Tolland

Southwick-Tolland Regional High School

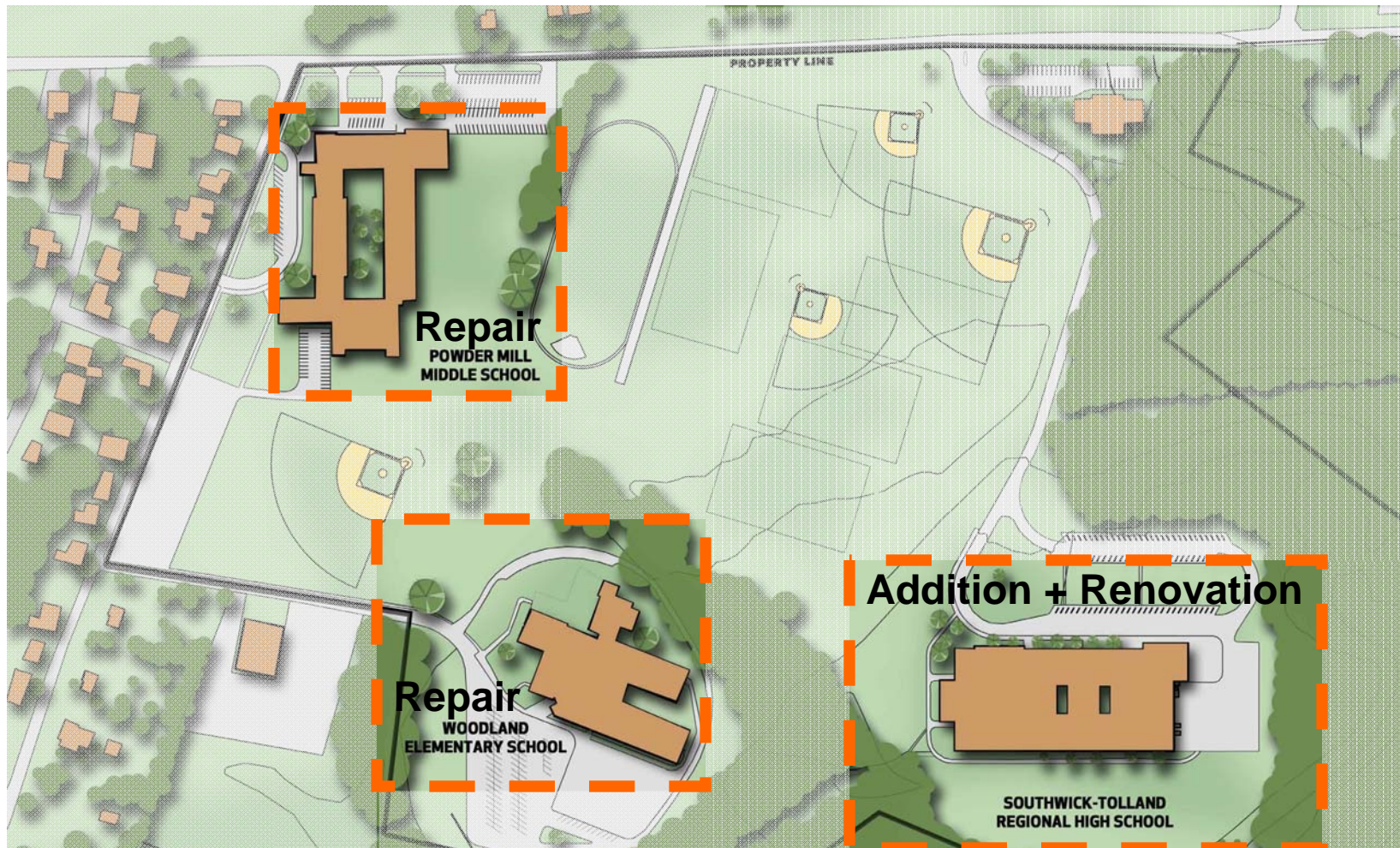
- Built in 1959
- Grades 7-12
- Enrollment: 790
- Proposed scope of project: Addition/Renovation at High School to create a middle/high school with repairs at the Powder Mill Middle School and Woodland Elementary School
- Existing square footage: 106,995 sf
- Total square footage of proposed project: 169,000 sf
- Estimated construction cost of preferred schematic: \$49,569,700
 - Addition and Renovation to high school to create a middle/high school \$28,317,900
 - Repairs at Powder Mill Middle School \$13,771,500
 - Repairs at Woodland Elementary School \$7,480,300

*Existing School houses grades 9-12 with a 2010-11 enrollment of 553



Preferred Schematic | Southwick - Tolland

Southwick - Tolland High School





Preferred Schematic | Stoneham

Stoneham Middle School

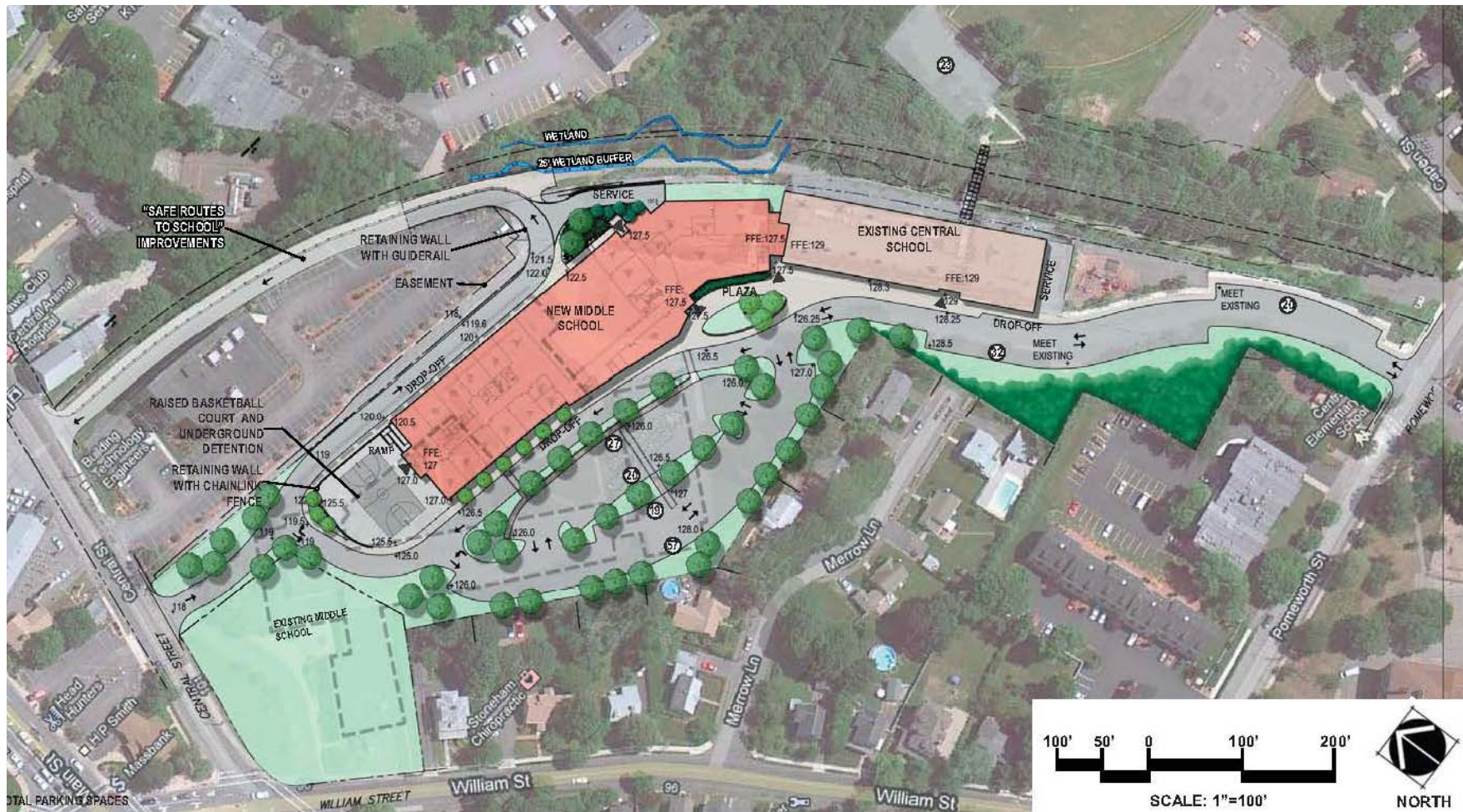
- Built in 1954
- Grades 5-8
- Enrollment: 775
- Proposed scope of project: Addition/Renovation to the existing Central Elementary School to create a middle school
- Existing square footage: 115,980 sf
- Total square footage of proposed project: 136,573 sf
- Estimated construction cost of preferred schematic: \$30,239,475

*Existing School houses grades 6-8 with a 2010-11 enrollment of 585



Preferred Schematic | Stoneham

Stoneham Middle School – Site Plan





Preferred Schematic | Williamsburg

Anne T. Dunphy Elementary School

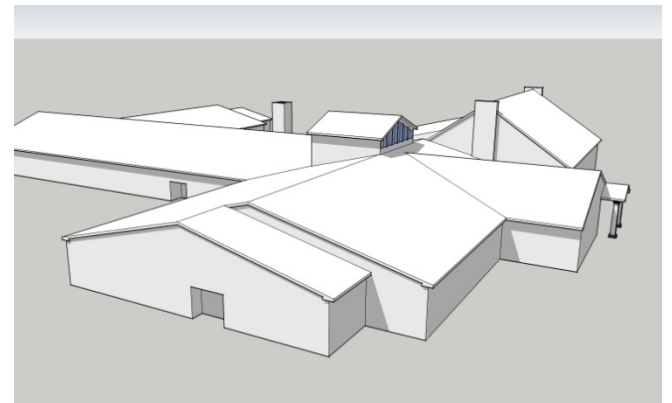
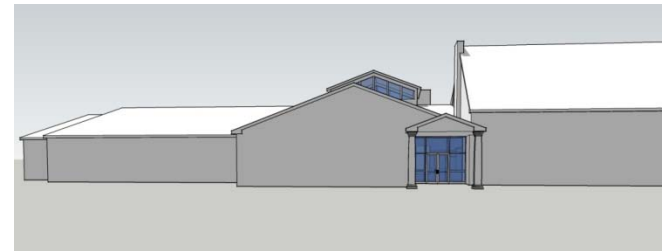
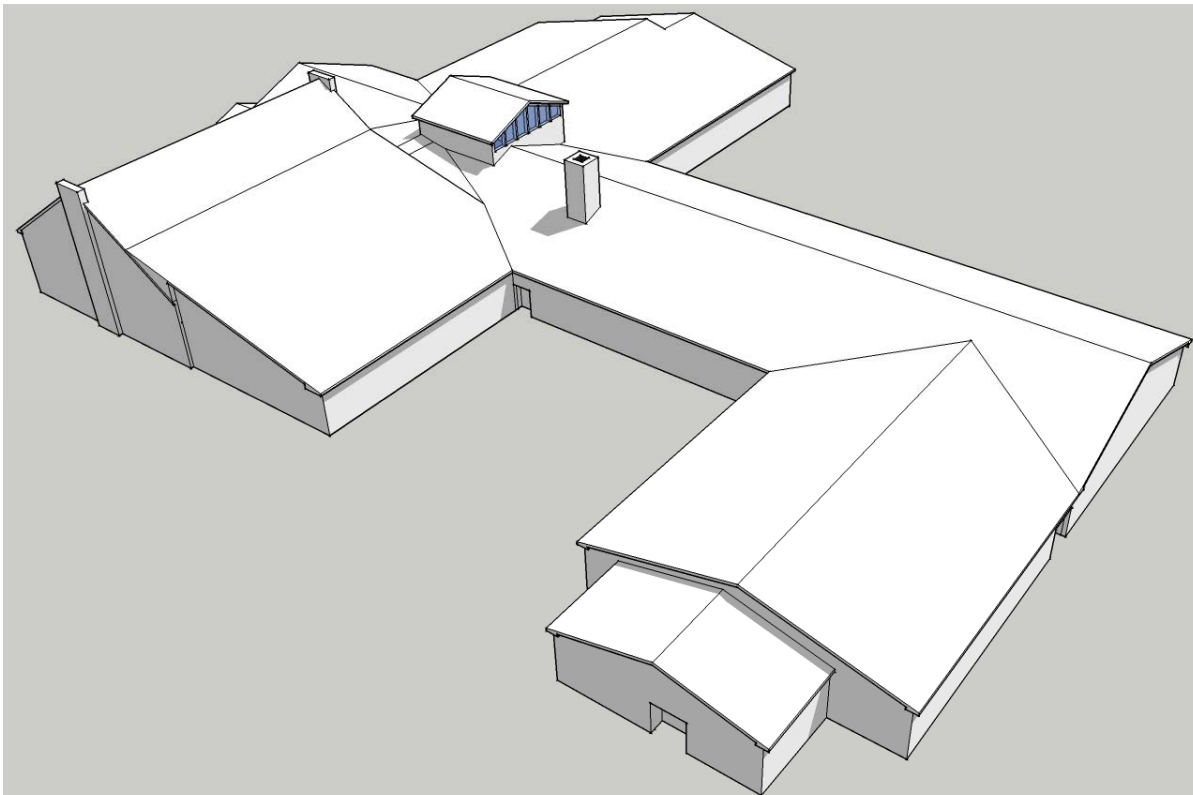
- Built in 1953
- Grades K-6
- Enrollment: 170
- Proposed scope of project: Addition/Renovation to the Dunphy School combining the students from the Dunphy School and the James School
- Existing square footage: 21,935 sf
- Total square footage of proposed project: 38,038 sf
- Estimated construction cost of preferred schematic: \$9,896,032

*Existing School houses grades 3-6 with a 2010-11 enrollment of 74



Preferred Schematic | Williamsburg

Anne T. Dunphy Elementary School





Project Scope and Budget

Vote - Project Scope and Budget									\$394,213,849	\$355,458,927	\$162,994,908	
District	School	Age of Existing Building	Grade	2010/11 Enroll	Projected Enroll	Existing Sq.Ft.	Proposed Square Footage	Project Scope	District Total Project Budget	MSBA Total Facility Grant Basis	Reimbursement Rate	Approximate Total Grant Amount
Concord-Carlisle	Concord-Carlisle High School	1961	9-12	1,208	1,225	233,800	219,871	New Construction	\$92,578,524	\$80,891,231	35.58%	\$28,781,100
Duxbury	Duxbury High School	1968	6-12	963	1,735	213,000	322,105	Model School	\$128,356,161	\$113,907,594	45.13%	\$51,406,497
Fairhaven	Rogers Elementary School	1885	K-5	226	370	48,000	77,871	Model School	\$24,655,239	\$23,610,240	63.50%	\$14,992,503
Hingham	Hingham Middle School	1962	6-8	931	1,020	114,000	176,385	Model School	\$60,910,920	\$59,059,904	43.87%	\$25,909,580
Saugus	Augustine J. Belmonte Middle School	1966	6-8	709	725	160,000	160,000	Repair	\$20,277,465	\$18,937,630	53.32%	\$10,097,544
Westfield	Abner Gibbs Elementary School	1914	K-5	196	600	32,136	95,573	Model School	\$35,931,394	\$34,123,833	67.98%	\$23,197,382
Weston	Field Elementary School	1950	4-5	364	355	61,200	65,390	New Construction	\$31,504,146	\$24,928,495	34.54%	\$8,610,302



Project Scope and Budget

Concord-Carlisle High School

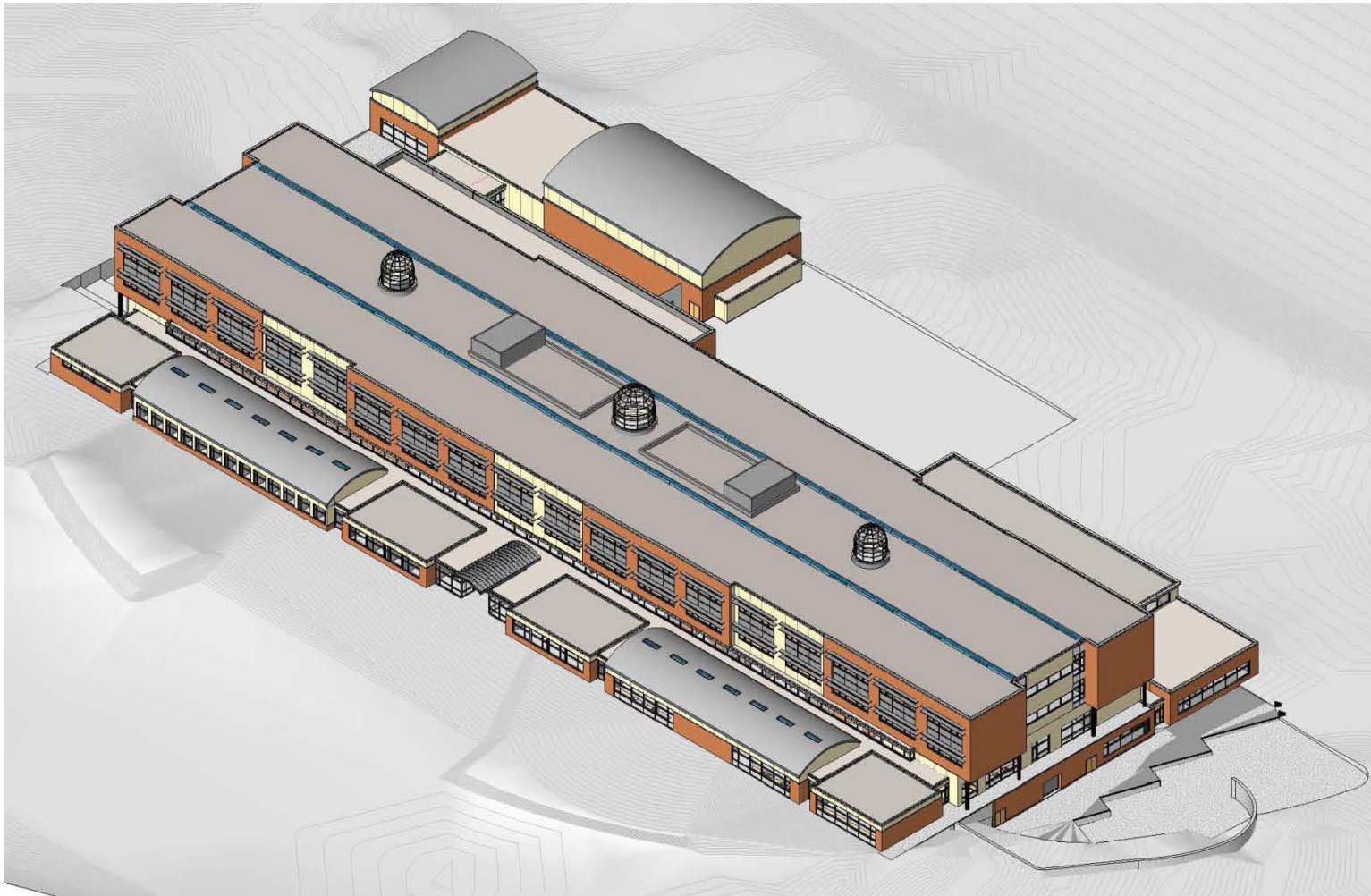
- Built in 1961
- New Construction
- Proposed Square Footage: 219,871 sf
- Grades 9 -12
- District Total Project Budget: \$92,578,524
- Basis of Maximum Grant Amount: \$ 80,891,231
- Reimbursement Rate: 35.58%*
- MSBA Maximum Grant Amount: \$28,781,100*
- Concord Town Meeting: November 7, 2011
- Carlisle Town Meeting: November 8, 2011
- Special Ballot Vote: November 15, 2011

*Reflects CM at Risk Delivery Method Approval. The reimbursement rate of 34.58% for the project shall be subject to an increase of up to one (1) incentive reimbursement point for a total of 35.58%, contingent upon the final approval to utilize the Construction Manager-at-Risk construction delivery method.



Project Scope and Budget | Concord-Carlisle

Concord-Carlisle High School – Aerial View





Project Scope and Budget

Duxbury Middle/High School

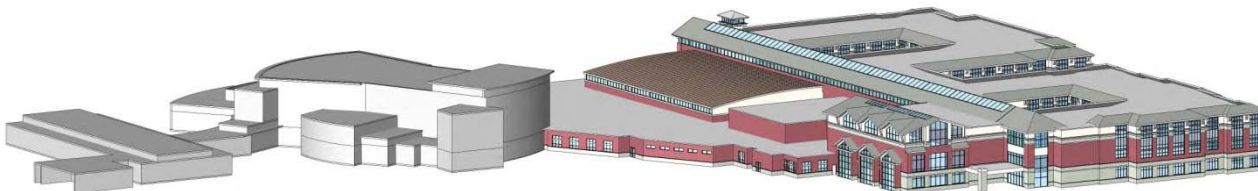
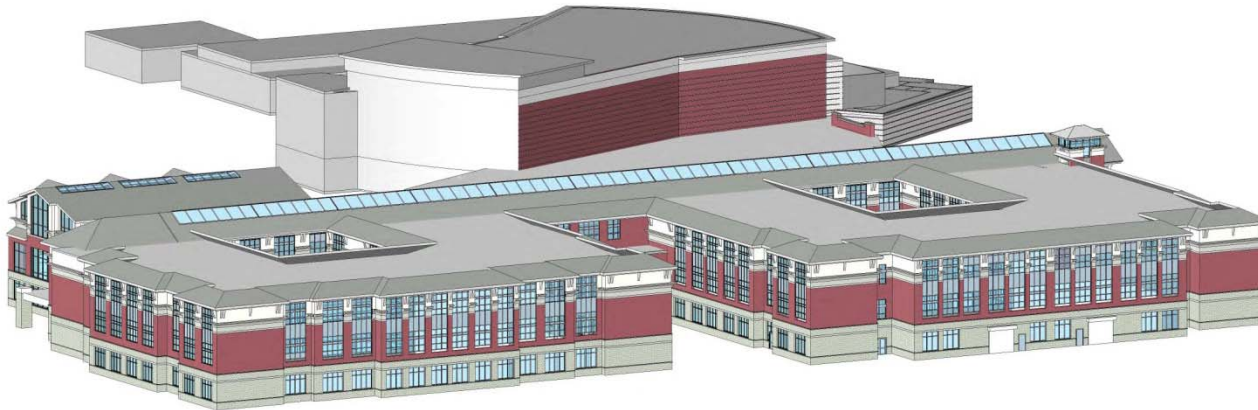
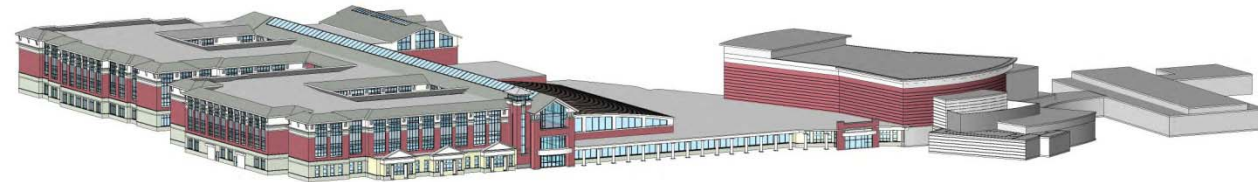
- Built in 1968
- Model School
- Proposed Square Footage: 322,105 sf
- Grades 6 -12
- District Total Project Budget: \$128,356,161
- Basis of Maximum Grant Amount: \$113,907,594
- Reimbursement Rate: 45.13%*
- MSBA Maximum Grant Amount: \$51,406,497*
- Town Meeting Vote: October 29, 2011
- Special Election Ballot: November 5, 2011

*Reflects CM at Risk Delivery Method Approval. The reimbursement rate of 44.13% for the project shall be subject to an increase of up to one (1) incentive reimbursement point for a total of 45.13%, contingent upon the final approval to utilize the Construction Manager-at-Risk construction delivery method.



Project Scope and Budget | Duxbury

Duxbury Middle / High School – Aerial Views





Project Scope and Budget

Fairhaven – New Elementary School

- Built in 1885
- Model School on Woods Elementary School Site
- Proposed Square Footage: 77,871 sf
- Grades K-5
- District Total Project Budget: \$24,655,239
- Basis of Maximum Grant Amount: \$23,610,240
- Reimbursement Rate: 63.50%
- MSBA Maximum Grant Amount: \$14,992,503
- Town Meeting Vote: November 1, 2011



Project Scope and Budget

Hingham Middle School

- Built in 1962
- Model School
- Proposed Square Footage: 176,385 sf
- Grades 6-8
- District Total Project Budget: \$60,910,920
- Basis of Maximum Grant Amount: \$59,059,904
- Reimbursement Rate: 43.87%
- MSBA Maximum Grant Amount: \$25,909,580
- Town Meeting: October 24, 2011
- Town Election: October 29, 2011



Project Scope and Budget | Hingham

Hingham Middle School





Project Scope and Budget

Saugus – Augustine J. Belmonte Middle School

- Built in 1966
- Repair
- Proposed Square Footage: 160,000 sf
- Grades 6-8
- District Total Project Budget: \$20,277,465
- Basis of Maximum Grant Amount: \$18,937,630
- Reimbursement Rate: 53.32%
- MSBA Maximum Grant Amount: \$10,097,544
- Town Meeting Vote: November 8, 2011



Project Scope and Budget | Saugus

Augustine J. Belmonte Middle School





Project Scope and Budget

Westfield - Abner Gibbs Elementary School

- Built in 1914
- Model School - Combining students from the existing Abner Gibbs Elementary School, the Franklin Avenue Elementary School, and Juniper Park Elementary School
- Proposed Square Footage: 95,573 sf
- Grades K-5
- District Total Project Budget: \$35,931,394
- Basis of Maximum Grant Amount: \$34,123,833
- Reimbursement Rate: 67.98%
- MSBA Maximum Grant Amount: \$23,197,382
- City Council Vote: November 3, 2011



Project Scope and Budget | Westfield

Abner Gibbs Elementary School





Project Scope and Budget | Westfield

Abner Gibbs Elementary School





Project Scope and Budget

Weston – Field Elementary School

- Built in 1950
- New Construction
- Proposed Square Footage: 65,390 sf
- Grades 4-5
- District Total Project Budget: \$31,504,146
- Basis of Maximum Grant Amount: \$24,928,495
- Reimbursement Rate: 34.54%
- MSBA Maximum Grant Amount: \$8,610,302
- Town Election: November 12, 2011
- Town Meeting: November 14, 2011



Project Scope and Budget | Weston

Field Elementary School





Removal from Green Repair Program

- Board will vote to remove the two projects listed below from the Green Repair Program.
- A total of 14 projects have withdrawn from the Green Repair Program, leaving a total of 173 projects in the Program.

District	School	Project Scope	Board Invitation Date
Natick	Johnson Elementary School	Windows, Boiler	February 9, 2011
West Boylston	West Boylston Jr-Sr High School	Windows	February 9, 2011



Project Scope Summary & Total MSBA Grant per District

District	School	Age of Existing Building	Grade	2010/11 Enroll	Existing Sq.Ft.	Project Scope	District Total Project Budget	MSBA Total Facility Grant Basis	Reimbursement Rate	Approximate Total Grant Amount
Agawam	Agawam Junior High School	1973	7-8	695	131,000	Roof and Windows	\$2,954,386	\$2,811,514	57.74%	\$1,623,368
Hadley	Hopkins Academy	1954	7-12	313	61,688	Roof	\$674,036	\$659,488	49.74%	\$328,029
North Andover	Annie L. Sargent Elementary School	1995	K-5	625	71,356	Roof	\$740,820	\$733,320	47.42%	\$347,740
	Atkinson Elementary School	1964	PK-5	505	56,490	Windows	\$1,270,522	\$1,263,346	47.42%	\$599,079
	North Andover Middle School	1963	6-8	1,088	150,000	Roof	\$2,525,615	\$2,513,586	47.42%	\$1,191,942
Pioneer Valley	Northfield Elementary School	1910	PK-6	276	42,000	Roof	\$312,670	\$299,670	56.26%	\$168,594
	Pioneer Valley Regional School	1957	7-12	536	114,000	Boiler	\$424,536	\$407,786	56.26%	\$229,420
Lowell	Lowell High School	1894	9-12	3,403	680,000	Roof	\$1,303,468	\$1,124,544	80.00%	\$899,635
	Moody Elementary School	1893	K-4	227	49,000	Roof and Windows	\$2,329,799	\$2,128,880	80.00%	\$1,703,104
	Peter W. Reilly Elementary School	1959	K-4	572	45,000	Roof	\$869,012	\$689,201	80.00%	\$551,361
	Washington Elementary School	1905	PK-4	234	39,000	Roof, Windows, and Boiler	\$2,238,316	\$2,122,200	80.00%	\$1,697,760
Total \$							\$15,643,180	\$14,753,535		\$9,340,034



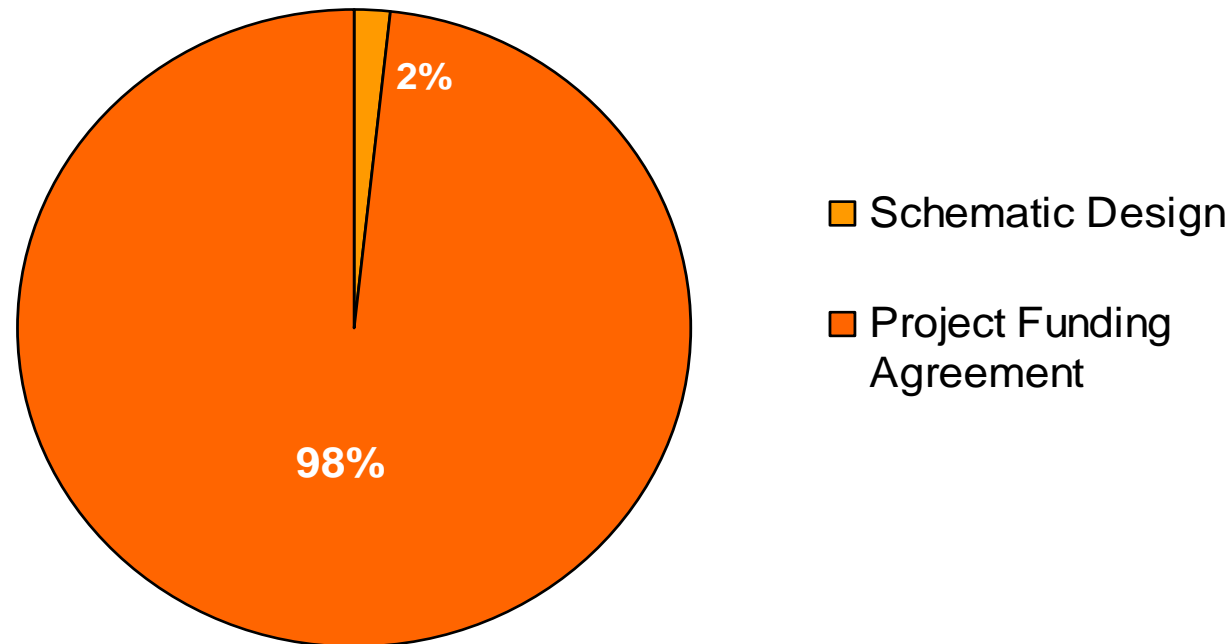
Green Repair | Project Funding Agreement

Green Repair Project Phase

98% - 169 projects authorized for PFA

Total Project Budgets = \$360,429,537

Total Maximum Facilities Grants = \$219,855,600





Summary of Bid Data

The following is a forecast of the projects going out to bid between October 1, 2011 – December 31, 2011 and those remaining for 2012:

	Roofs	Windows	Boilers
October	2	0	3
November	6	6	6
December	2	1	1
Total 2011	10	7	10
Remaining 2012 Bids	19	25	10
Total Remaining Bids	29	32	20



Summary of Bid Data*

- Of the Roof bids reviewed, 79% have come in under budget
- Of the Window bids reviewed, 63% have come in under budget
- Of the Boiler bids reviewed, 35% have come in under budget
- Remedies sought by Districts for those over budget include:
 - Requesting schedule extensions to re-bid at a later date
 - Appropriating additional funds to cover the costs of the contract
 - Re-bidding immediately with revised bid documents
- Staff have begun to collect actual data from completed jobs to assess the trades employed and the number of hours worked. Once sufficient data has been collected and reviewed, staff will provide an update on our findings.

*Bid results compared to the estimated construction budgets proposed by each district's consultants for approval by the MSBA Board of Directors for a Project Funding Agreement.



Green Repair | Program Overview

- Staff have considered the advantages and disadvantages of each of the following components of the Green Repair Program, which are unique to the program, and provided recommendations as to whether it should be incorporated into the MSBA's ongoing repair program as part of an Accelerated Repair Program:
 - Requirements
 - Accelerated Construction Schedule
 - Scope Limitations
 - Multiple Projects Per District
 - Consultant Selection Process
 - Cost Data Selection and Analysis
- Staff's review results in the recommendations on the next page.



Green Repair | Sustainability Recommendations

- The MSBA should continue to encourage the best sustainable policies and recommends that sustainability requirements be established for components of all repair projects.
- Recommend continuation of sustainability requirements for compliance with the stretch code for roofs, windows, and boilers, and investigation of additional requirements as may be appropriate in all repair projects.
- MSBA Repair projects will focus on the preservation of existing assets with energy efficient and cost saving upgrades resulting in direct operational savings for school districts.



Green Repair | MSBA Summary Recommendation

- Staff suggests the incorporation of an accelerated repair program with the revised processes as part of the MSBA's ongoing repair program.

MSBA Repair Program	
Accelerated Repair Program	Major Repair/Renovation Program
<ul style="list-style-type: none">- Use updated processes developed for the Green Repair Program- Continue roof, window, and boiler projects with potential to include additional systems as may be designated by the MSBA contingent upon available funding and capacity in the Capital Program- Suggest the addition of science lab upgrades for SOIs in 2012	<ul style="list-style-type: none">- Use standard MSBA "new program" processes- Scope limited to repair/renovation projects but not restricted to specific building systems

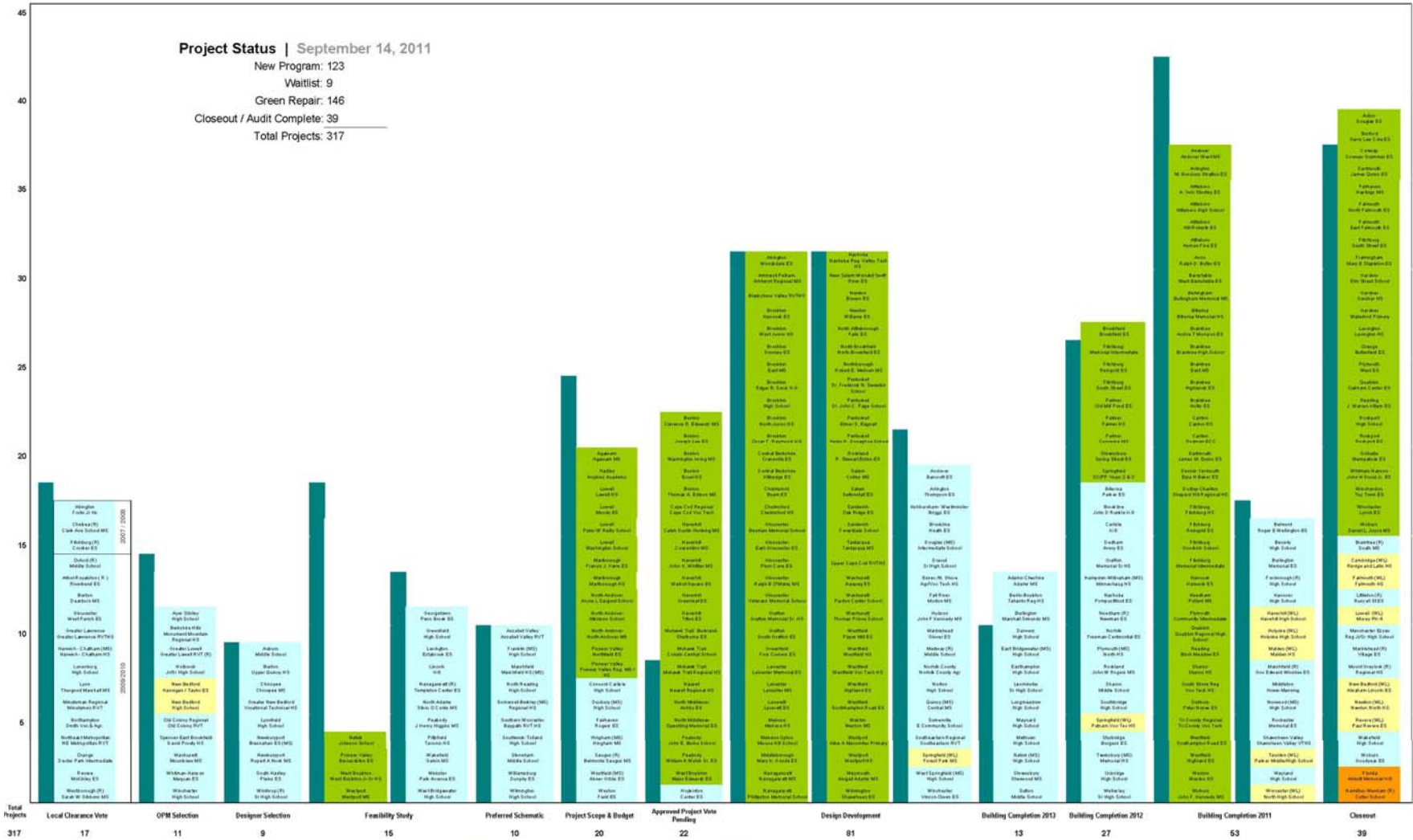


Green Repair | Summary of Recommendations

Green Repair Process	Description	Recommendation for future accelerated repair program:	
		Continue	Modify/Expand
Requirements	The project requirements for deliverables, legal agreements, and Board votes were abbreviated for Green Repair projects.	✓	Streamline reimbursement payments for small repair projects below certain dollar/duration thresholds (e.g., 50% and 100% reimbursement payments versus monthly payments).
Accelerated Construction Schedule	Districts were initially required to complete construction by December, 2011, but the Green Repair Program has extended to December, 2012.	✓	<ol style="list-style-type: none"> 1) Establish a project completion deadline of 18 months from the date of invite. 2) Replace the pre-requisite funding schedule with a more comprehensive project schedule to be agreed upon by the MSBA and district at the beginning of each project.
Scope Limitations	Project scope was limited to the repair and/or replacement of roofs, windows, and/or boilers.	✓	Expand the list of eligible scope (e.g., science labs).
Multiple Projects Per District	Districts were invited to work on simultaneous projects at more than one school.	✓	Establish a limit on the number of projects per district based on available MSBA funding and Capital Pipeline capacity.
Consultant Selection Process	The MSBA issued Requests for Services to prequalify 20 Owner's Project Managers ("OPMs") and 21 Designers and established a selection process used by districts to select their consultant teams.	✓	<ol style="list-style-type: none"> 1) Issue new RFS with updated evaluative criteria. 2) Consider an MSBA assignment rather than a district selection process. 3) Re-evaluate the current \$15,000 OPM not-to-exceed fee for the schematic design phase and adjust appropriately. 4) Consider establishing a not-to-exceed designer fee for the schematic design phase.
Cost Data Selection and Analysis	Staff collected total project budget, roof, and window cost data for internal evaluation. Total project budget data was posted on the MSBA website as a reference tool for participating districts.	✓	



MSBA Capital Pipeline





Local Clearance

District Action Required

- 17 Projects in Local Clearance
 - Five enrollments completed this period
 - Project enrollments complete for 101,345 students
 - Seven Districts are evaluating local options for financing and project execution
 - Chelsea, Fitchburg, Gloucester, Minuteman Reg Voc Tech, Northampton Voc Tech, Northeast Voc Tech, Orange
 - Seven Districts are completing prerequisites and are actively seeking local authorizations and funding
 - Abington, Boston (Dearborn), Harwich-Chatham, Lunenburg, Lynn, Revere, Westborough
 - Three Districts are completing prerequisites and have secured local authorizations and funding
 - Athol-Royalston, Ayer-Shirley, Winchester



Professional Services Procurement

MSBA staff assist Districts in the procurement of professional services

- Districts currently are procuring professional services for 20 projects*
 - Four Districts completed OPM Procurement this period
 - Lexington, Auburn, Newburyport (Nock Middle School), Newburyport (Bresnahan Elementary School)
 - 10 Districts are actively procuring Owner's Project Manager (OPM) services for 11 projects
 - Ayer–Shirley RSD, Berkshire Hills RSD, Greater Lowell, Holbrook, New Bedford (Taylor ES and High School), Old Colony RVTHS, Spencer-East Brookfield, Wachusett, Whitman-Hanson, Winchester
 - Over \$84 million in OPM fees to date
 - Three Districts participated in DSP and selected designers this period
 - Lexington, Webster, West Bridgewater
 - Nine Districts are in the process of selecting a designer
 - Six Districts scheduled for upcoming DSP meetings – Boston, Chicopee, Greater New Bedford, Lynnfield, South Hadley, Winthrop
 - One district is procuring a Model School designer – Newburyport (Bresnahan Elementary School)
 - Over \$207.6 million in designer fees to date

*Excludes Green Repair Projects



Feasibility Study

MSBA staff collaborate with Districts to determine the most educationally-appropriate and cost-effective solution resulting in a robust schematic design of sufficient detail to define the scope of work for the proposed project

- Districts are working with MSBA staff on a total of 21 projects to define the scope of a proposed project for MSBA Board consideration*
 - 11 Districts are performing feasibility studies to determine their preferred solution
 - 5 elementary schools: Georgetown, Lexington, Lincoln, Narragansett, Webster
 - 3 middle schools: North Adams, Peabody, Wakefield
 - 3 high schools: Greenfield, Pittsfield, West Bridgewater
 - Four Districts presenting preferred solution at today's Board Meeting
 - North Reading, Southwick-Tolland, Stoneham, Williamsburg
 - Six Districts are advancing the MSBA Board approved solution into schematic design
 - 4 high school (4 new: Franklin, Marshfield, Somerset-Berkley, Wilmington)
 - 2 regional voc tech high school (1 repair: Assabet Valley RVT; 1 add/reno: Southern Worcester Baypath RVT)

*Excludes Green Repair Projects



Design Development and Construction Process

MSBA staff monitor scope, budget, and schedule

- 174 projects at estimated \$2.85 billion total construction cost
 - 81 projects in Design Development (\$790 million)
 - 13 construction projects still to bid in 2011 (\$452.4 million)
 - 93 projects in construction (\$2.06 billion)
 - 37 Green Repair Projects to be completed in 2011
 - 16 New Program/Waitlist Projects to be completed in 2011

- Commissioning
 - 4 Commissioning consultant contracts executed this period for \$317,570
 - Over \$10.9 million in consultant contracts to date



Design Development

MSBA staff monitor scope, budget, and schedule

- **81 total projects in Design Development**
 - 62 Green Repair Program Projects – \$133.94 million
 - 19 New Program Projects – \$654.15 million
 - Eight Elementary Schools
 - Andover, Arlington, Ashburnham-Westminster, Brookline, Douglas, Marblehead, Somerville, Winchester
 - Five Middle Schools
 - Fall River, Hudson, Medway, Quincy, Springfield (Forest Park)
 - Six High Schools
 - Dracut, Essex North Shore Agr., Norfolk County Agr., Norton, Southeastern RVT, West Springfield



Construction Projects

MSBA staff monitor scope, budget, and schedule

- 93 projects in construction
 - 46 Green Repair Program Projects
 - 47 New Program and Waitlist Projects
 - 13 Elementary Schools
 - Belmont, Billerica, Brookline, Burlington Memorial, Carlisle, Dedham, Marshfield, Middleton, Nashoba, Needham, Norfolk, Rochester, Sturbridge
 - 7 Middle and Middle/High Schools
 - Adams-Cheshire, Burlington Marshall Simonds, Rockland, Sharon, Shrewsbury, Sutton, Taunton
 - 27 High Schools

<u>Repair</u>	<u>Add/Reno</u>	<u>New</u>	<u>Models</u>	
Foxborough	Beverly	Berlin-Boylston	Southbridge	East Bridgewater
Haverhill	Danvers	Easthampton	Springfield Voc Tech	Hampden-Wilbraham
Holyoke	Leominster	Grafton	Uxbridge	Natick
	Malden	Hanover	Wayland	Norwood
	Methuen	Longmeadow	Wellesley	Plymouth North
	Shawsheen Valley	Maynard	Worcester North	Tewksbury



Estimated Bid Dates

2011

2011 Estimated Bid Dates

Note bid dates are **Estimates ONLY**. Please contact Districts for exact information.

Total Project Budget denotes total District costs and does not denote the basis of the MSBA Total Facilities Grant.

- Denotes bid phase in progress or complete - Denotes estimated bid dates

DISTRICT	DESIGN BASIS FOR ENROLLMENT	PROJECT BUDGET <small>Shown in Millions</small>	CONSTRUCTION BUDGET <small>Shown in Millions</small>	JAN	FEB	MAR	APR	MAY	JUN	JUL	AUG	SEP	OCT	NOV	DEC
*SOUTHBRIDGE	1050	\$76.5	\$0.1	Southbridge HS New Construction: Filed-Sub Bids rcv'd 1/7. GMP Issued 2/7.											
*SHREWSBURY	900	\$47.3	\$37.0	Sherwood MS New Construction: Filed-Sub Bids rcv'd 2/7. GMP Issued 5/10.											
SO. SHORE RVT	595	\$3.2	\$2.6	Regional VTHS Rebar: Filed-Sub Bids rcv'd 1/7. G.C. Bids rcv'd 1/18. NTP issued 5/9.											
CARLISLE	700	\$20.0	\$15.6	Carlisle ES Addition/Renovation: Filed-Sub Bids rcv'd 1/26. G.C. Bids rcv'd 2/4. NTP Issued 2/9.											
MARSHFIELD	485	\$2.4	\$2.0	Marshfield Edward Winslow ES Repair: Filed-Sub Bids rcv'd 1/14. G.C. Bids rcv'd 1/21. NTP Issued 2/12.											
*UXBRIDGE	600	\$43.0	\$34.4	Uxbridge HS New Construction: Early Site & Steel Package rcv'd 1/13. Filed-Sub Bids rcv'd 3/17. GMP Issued 3/31.											
*BURLINGTON	880	\$32.9	\$24.7	Marshall Simonds MS Addition/Renovation: Filed-Sub Bids rcv'd 3/22. GMP Issued 4/12.											
BERLIN / BOYLSTON	560	\$44.0	\$34.2	Tahanto MS/HS New Construction: Filed-Sub Bids rcv'd 4/7. G.C. Bids rcv'd 4/20. NTP issued 5/10.											
EASTHAMPTON	510	\$43.7	\$33.5	Easthampton HS New Construction: Filed-Sub Bids rcv'd 4/20. G.C. Bids rcv'd 5/6. NTP issued 5/16.											
*LONGMEADOW	1000	\$78.5	\$63.8	Longmeadow HS New Construction: Filed-Sub Bids rcv'd 4/28. GMP issued 5/12.											
SUTTON	840	\$59.9	\$46.4	Sutton MS New Construction: Filed-Sub Bids rcv'd 5/4. G.C. Bids rcv'd 5/18. NTP issued 5/26.											
*LEOMINSTER	1805	\$45.9	\$32.7	Leominster HS Addition/Renovation: Filed-Sub Bids rcv'd 6/2. GMP issued 8/23.											
*SOMERVILLE	500	\$33.2	\$15.2	East Somerville Community School Addition/Renovation: Filed-Sub Bids rcv'd 6/14. GMP Targeted July.											
*ADAMS/CHESHIRE	805	\$40.6	\$30.0	Hoosac Valley MHS Addition/Renovation: Filed-Sub Bids Due 9/26. GMP Targeted October.											
MAYNARD	410	\$45.8	\$35.6	Maynard HS New Construction: Filed-Sub Bids rcv'd 7/13. G.C. Bids rcv'd 7/27. NTP issued 8/18.											
HUDSON	715	\$44.1	\$34.8	JFK MS New Construction: Filed-Sub Bids rcv'd 8/29. G.C. Bids rcv'd 9/14. NTP Targeted September.											
*METHUEN	2075	\$99.1	\$74.9	Methuen HS Addition/Renovation: Filed-Sub Bids Due 9/26. GMP Targeted Oct.											
Subtotal	14,430	\$760.1	\$577.5												



Estimated Bid Dates

2011

2011 Estimated Bid Dates

Note bid dates are **Estimates ONLY**. Please contact Districts for exact information.

Total Project Budget denotes total District costs and does not denote the basis of the MSBA Total Facilities Grant.

■ - Denotes bid phase in progress or complete ■ - Denotes estimated bid dates

DISTRICT	DESIGN BASIS FOR ENROLLMENT	PROJECT BUDGET Shown in Millions	CONSTRUCTION BUDGET Shown in Millions	JAN	FEB	MAR	APR	MAY	JUN	JUL	AUG	SEP	OCT	NOV	DEC
*MEDWAY	853	\$22.1	\$18.2												
EAST BRIDGEWATER	950	\$77.1	\$60.3												
*ANDOVER	680	\$44.7	\$34.5												
BROOKLINE	560	\$8.8	\$7.0												
WEST SPRINGFIELD	1270	\$107.6	\$73.3												
FALL RIVER	625	\$53.2	\$42.4												
QUINCY	620	\$50.0	\$32.6												
SOUTHEASTERN REGIONAL RVT	1370	\$34.2	\$26.5												
DOUGLAS	552	\$50.7	\$38.9												
*ASHBURNHAM-WESTMINSTER	520	\$30.0	\$24.8												
*SRINGFIELD -FOREST PARK	660	\$43.4	\$34.0												
NORFOLK COUNTY AGRICULTURAL	550	\$28.6	\$22.3												
Subtotal	9,210	\$550.4	\$414.8												
GRAND TOTAL	23,640	\$1.286B	\$992.3												
Number of Construction-Related Employment			4,962												



Estimated Bid Dates

2012

2012 Estimated Bid Dates

Note bid dates are **Estimates ONLY**. Please contact Districts for exact information.

Total Project Budget denotes total District costs and does not denote the basis of the MSBA Total Facilities Grant.

 - Denotes bid phase in progress or complete - Denotes estimated bid dates

DISTRICT	DESIGN BASIS FOR ENROLLMENT	PROJECT BUDGET <small>Shown in Millions</small>	CONSTRUCTION BUDGET <small>Shown in Millions</small>	JAN	FEB	MAR	APR	MAY	JUN	JUL	AUG	SEP	OCT	NOV	DEC
*ESSEX-NS	1440	\$125.0	\$96.50	Essex Northshore HS New Construction: Early Site Packages Due 2/29. Filed-Sub Bids Due 4/13/12. GMP Targeted June.											
WINCHESTER	420	\$28.7	21.7	Winson-Owen ES New Construction: Filed-Sub Bids Due 1/5. G.C. Bids Due 1/26. NTP Targeted February.											
DRACUT	1160	\$60.4	\$47.30	Dracut Senior HS Addition/Renovation: Filed-Sub Bids Due 2/1. G.C. Bids Due 2/15. NTP Targeted March											
*NORTON	700	\$34.6	\$27.0	Norton HS Addition/Renovation Filed-Sub Bids Due 2/9. GMP Targeted March.											
MARBLEHEAD	425	\$25.9	\$20.2	Marblehead Glover ES New Construction: Filed-Sub Bids Due 2/29. GMP Targeted March.											
ARLINGTON	380	\$20.7	\$15.7	Arlington Thompson ES New Construction: Filed-Sub Bids Due 3/21. G.C. Bids Due 4/2. NTP Targeted April.											
Subtotal	4,525	\$295.3	\$228.4												
GRAND TOTAL	4,525	\$295	\$228												
Number of Construction-Related Employment			1,142												



Summary of Bid Data

Year	Number of Projects	Design Basis for Enrollment	Project Budget	Construction Budget
2009	11	8,188	\$205.6M	\$171.5M
2010	33	26,184	\$1.37B	\$1.07B
2011	28	23,640	\$1.28B	\$992.3M
2012	6	4,525	\$295M	\$228M
Grand Total	78	62,537	\$3.15B	\$2.46B

Note: These numbers are based on preliminary information received from the District and are subject to further review and calculation.

- Of the 29 projects scheduled to bid in 2011, 10 General Contractor bids have been received and 6 Guaranteed Maximum Prices executed
- To date, the bid variance from project estimate for the 2011 projects is \$22.3 million with potential grant variance of \$10.9 million
- Bids received in July, August, and thru mid-September: Maynard, E. Bridgewater, Brookline, and Hudson
- Anticipated Bids:
 - September – Adams/Cheshire, Methuen, and Medway
 - October – W. Springfield and Fall River
 - November – Quincy, Andover, and Southeastern RVT



Project Estimate vs. Bid Amount

			Total	\$649,266,526	\$626,899,835	\$22,366,691	-	\$10.9M
District	School	Scope	Bid Date	Construction Estimate	Bid Amount	Variance from Project Estimate	Reimbursement Rate	Potential Grant Variance *
So. Shore RVT	Regional VTHS	Repair	Jan-11	\$2,642,370	\$2,311,007	\$331,363	52.06%	\$172K
Marshfield	Edwards Winslow ES	Repair	Jan-11	\$1,868,688	\$1,606,479	\$262,209	46.37%	\$122K
Southbridge	Southbridge HS	New	Jan-11	\$60,165,207	\$59,407,632	\$757,575	80.00%	\$606K
Carlisle	Carlisle K-8	Add/Reno	Feb-11	\$15,644,463	\$14,889,000	\$755,463	40.00%	\$302K
**Grafton	Memorial Sr HS	New	Dec-10	\$57,444,991	\$54,149,289	\$3,295,702	56.89%	\$1.87M
**Rockland	J. Rogers MS/HS	New	Dec-10	\$66,525,788	\$64,623,632	\$1,902,156	64.26%	\$1.22M
Shrewsbury	Sherwood MS	New	Feb-11	\$37,025,358	\$34,076,286	\$2,949,072	54.16%	\$1.48M
Uxbridge	Uxbridge HS	New	Mar-11	\$34,469,807	\$35,265,819	-\$796,012	57.53%	\$0
Burlington	Marshall Simonds MS	Add/Reno	Mar-11	\$24,683,286	\$24,420,100	\$263,186	54.01%	\$142K

Note: These numbers are based on preliminary information received from the District and are subject to further review and calculation.



Project Estimate vs. Bid Amount

			Total	\$649,266,526	\$626,899,835	\$22,366,691	-	\$10.9M
District	School	Scope	Bid Date	Construction Estimate	Bid Amount	Variance from Project Estimate	Reimbursement Rate	Potential Grant Variance *
Berlin-Boylston	Tahanto MS/HS	New	Apr-11	\$34,180,397	\$31,287,000	\$2,893,397	51.21%	\$1.48M
Longmeadow	Longmeadow HS	New	May-11	\$63,773,871	\$62,898,150	\$875,721	51.84%	\$454K
Sutton	Sutton MS	New	May-11	\$46,356,674	\$40,175,700	\$6,180,974	55.39%	\$3.42M
Easthampton	Easthampton HS	New	May-11	\$33,463,815	\$30,451,000	\$3,012,815	63.84%	\$1.92M
Leominster	Leominster Sr. HS	Add/Reno	Jun-11	\$33,236,000	\$32,709,051	\$526,949	51.84%	\$273K
Maynard	Maynard HS	New	Jul-11	\$35,628,582	\$36,650,000	-\$1,021,418	56.42%	\$0
East Bridgewater	East Bridgewater HS	New	Aug-11	\$60,320,137	\$61,054,000	-\$733,863	64.94%	\$0
Hudson	John F. Kennedy MS	New	Sep-11	\$34,820,243	\$34,850,690	-\$30,447	58.11%	\$0
Brookline	Heath ES	Add/Reno	Sep-11	\$7,016,849	\$6,075,000	\$941,849	39.93%	\$376K

Note: These numbers are based on preliminary information received from the District and are subject to further review and calculation.



Audit Status Update

- **Former Program Projects**
 - MSBA has completed final audits of 773 of the 789 Former Program projects totaling over \$14.5 billion in submitted costs
 - Achieved audit savings of over \$1.1 billion
 - Audited over \$797 million in costs for the 16 remaining Waiting List projects currently submitting monthly requests for reimbursement

- **New Program Projects**
 - MSBA has completed final audits for 38 projects totaling over \$185 million in submitted costs
 - Audited over \$872 million in costs for the 215 projects currently submitting monthly requests for reimbursement



Today's Board Vote | Exhibit A

- Waiting List Final Audit
 - Revere Paul Revere Elementary School



Paul Revere Elementary School Close-out Audit

- New School
- Original Approved Project Costs: \$9,372,500
- Original Approved Interest Costs: \$7,161,731
- Project Costs Submitted: \$16,901,327
- Interest Costs Submitted/Eligible: \$0
- Total Audited Eligible Project Costs: \$10,752,500
- Reimbursement Rate: 90%
- Final Total Facilities Grant: \$9,677,250



Board Vote | Exhibit A

- Waiting List Final Audit
 - Paul Revere Elementary School

- Total Grant Value of \$9,677,250



Today's Board Vote | Exhibit D

- New Program Final Close-out Audits
 - Braintree South Middle School
 - Scituate Gates Intermediate School



Braintree South Middle School Close-out Audit

- New Program
- Repairs including window, HVAC, lighting, and electrical upgrades
- Estimated Budget: \$3,052,702
- Final Project Costs Submitted: \$3,090,600
- Total Audited Eligible Project Costs: \$2,644,284
- Reimbursement Rate: 48.47%
- Final Total Facilities Grant: \$1,281,684



Scituate Gates Intermediate School Close-out Audit

- New Program/Green Repair
- Repair including exterior finishes and doors; partial roof replacement
- Estimated Budget: \$1,318,792
- Final Project Costs Submitted: \$1,320,848
- Total Audited Eligible Project Costs: \$1,316,044
- Reimbursement Rate: 40.68%
- Final Total Facilities Grant: \$535,367



Board Vote | Exhibit D

- New Program Final Audits
 - Braintree South Middle School
 - Scituate Gates Intermediate School

- Total Grant Value of \$1,817,051



Grant Payments Update

Since the July 2011 Board of Directors meeting...

- The MSBA has made \$173.5M grant payments towards 217 projects in 146 school districts
 - New Program: \$67.5M towards 84 projects in 73 districts
 - Wait List: \$51.9M towards 45 projects in 30 districts
 - Prior Grants: \$54.1M towards 88 projects in 69 districts

- Pace of New Program grant payments continues to accelerate
 - FY2012 YTD New Program payments of \$83M are more than twice the amount paid towards New Program projects during the first quarter of FY2011



MSBA Series 2011B Bond Issuance

- Anticipate pricing at the end of October
- \$500 million to \$1 billion, depending on market conditions at time of pricing
- Senior Managers: Barclays Capital, Bank of America Merrill Lynch, and Citi



Sales Tax Update

- FY2012 actual SMART collections through August are down 1.6% (\$1.8M) from same period FY2011
 - Repeal of sales tax on alcohol skews comparison
 - DOR estimates that FY2012 sales tax collections exclusive of meals tax, accounting for year-to-year changes in tax law, are up 1.4% through August
- FY2012 YTD SMART collections are \$2.3M (-1.9%) below YTD benchmark set based on the FY2012 Consensus Revenue Estimate of \$678.1M for SMART collections