

# Massachusetts School Building Authority

Steven Grossman  
*Chairman, State Treasurer*

John K. McCarthy  
*Executive Director*



## Board Meeting

July 25, 2012

July 25, 2012

[www.MassSchoolBuildings.org](http://www.MassSchoolBuildings.org)



# Table of Contents

---

- Executive Director's Report
  - Project Visits and Local Votes
- Project Votes
- Project Overview Report
- Audit Update
- Finance Update



# Project Visits and Votes

- Since the June 6, 2012 Board meeting, the MSBA has visited 27 projects and completed Senior Studies in 16 districts.
- Springfield and Webster have voted affirmatively to support proposed projects.
- Chelsea, Melrose, and Springfield have voted affirmatively to appropriate feasibility funds.
- Blackstone Valley RSD, Gardner, Holyoke, Medford, North Attleborough, and Tri-County RVTSD have voted affirmatively to appropriate feasibility funds for Science Lab Initiative projects.
- The vote to appropriate funds for a Feasibility Study under the Science Lab Initiative failed in Saugus.

Senior Studies	Project Visits		Project Votes
Scituate Bourne Triton RSD South Middlesex VTSD (Keefe Technical HS) Tyngsborough Woburn Boston Somerville Plymouth Granby Holyoke Central Berkshire RSD Dudley-Charlton RSD Dedham Stoughton Mount Greylock RSD	Adams-Cheshire RSD Arlington Berlin-Boylston RSD Brookline (Heath) Brookline (Runkle) Burlington (Marshall Simonds) Danvers Grafton Hudson Leominster Longmeadow Methuen Maynard Natick	Nashoba Norfolk (Freeman-Kennedy) Rockland Saugus Shrewsbury Southbridge Southeastern VTSD Springfield (Dryden) Springfield (Forest Park) Springfield (Putnam) Sutton Wayland Wellesley	Blackstone Valley RSD Chelsea Gardner Holyoke Medford (1 of 3) Melrose North Attleborough Saugus Springfield (Brookings) Springfield (Dryden) Tri-County RVTSD Webster



# Project Milestones

- Since the June 6, 2012 Board meeting, the MSBA has attended 6 project milestone celebrations.

## **Groundbreaking**

Arlington

Hingham

Somerset-Berkley RSD

Fairhaven

## **Topping Off Ceremony**

Fall River

## **Ribbon Cutting**

Medway



Representative David Sullivan and Representative Kevin Aguiar join Executive Director Jack McCarthy at the Topping Off Ceremony for the Morton Middle School in Fall River



# Project Visits and Votes

Upcoming events anticipated in August and September

Project Visits			Groundbreakings/ Topping Off Ceremonies/ Ribbon Cuttings	Project Votes
<p>Arlington Berlin-Boylston RSD Billerica Brookline Burlington Carlisle Danvers Douglas Easthampton East Bridgewater Fall River Grafton</p>	<p>Hampden-Wilbraham RSD Hingham Hudson Leominster Longmeadow Maynard Medway Natick Nashoba Needham Norfolk Norton</p>	<p>Plymouth Quincy Shrewsbury Somerville Southeastern RVTSH Springfield Sturbridge Sutton Tewksbury Uxbridge West Springfield</p>	<p><b><u>Topping Off Ceremony</u></b> Springfield (Forest Park)</p> <p><b><u>Ribbon Cuttings</u></b> Adams-Cheshire RSD Grafton Springfield (Putnam) Sturbridge Uxbridge Wayland</p>	<p><b><u>August</u></b> Chatham Harwich</p> <p><b><u>September</u></b> Chatham Harwich Swampscott</p>



# Accelerated Repair Project Removal

---

District	School	Scope	Invite Date
Swansea	Joseph Case Junior High School	Boiler	March 28, 2012



# Project Re-classification

---

Re-classification from Invitation to Feasibility Study for a Repair to Invitation to Feasibility Study

District	School	Invite Date
Athol-Royalston Regional School District	Riverbend Elementary School	September 30, 2009



# Invitation to Eligibility Period

---

District	School
Plymouth	Plymouth South High School





# Invitation to Feasibility Study

Six Districts have completed all Eligibility Period requirements, appropriated funding, and are recommended to be moved into the OPM Selection phase of the Capital Pipeline.

District	School	Year Built	Grade	Enrollment	Existing Square Footage
Abington	Frolio Middle School	1936	7-8	**331	51,000
Chelsea	Clark Avenue Middle School	1926	5-8	**545	238,000
Gloucester	West Parish Elementary School	1949	K-5	*355	41,420
Lunenburg	Lunenburg High School	1957	9-12	**510	98,000
Milford	Woodland Elementary School	1977	3-5	*985	64,048
Northborough	Lincoln Street Elementary School	1965	K-5	*270	44,000

\*Design Enrollment Certification

\*\*2011-2012 Enrollment



# Invitation to Science Lab Initiative Program

---

District	School
Springfield	Springfield Central High School



# Preferred Schematic

District	School	Age of Existing Building	Grade	2011/2012 Enroll.	Proj. Enroll	Existing Sq.Ft.	Proposed New Square Footage	Current MSBA Category	Proposed Scope of Project	Estimated Construction Cost of Preferred Schematic	MSBA Total Facility Grant Basis	Reimbursement Rate Before Incentives	Approx. Total Grant Amount
Greater Lowell Regional Voc Tech	Greater Lowell Technical High School	1974	9-12	2,116	1,990	482,954	505,000	Feasibility Study	Add/Reno	\$54,261,760	TBD	76.84%	TBD
Newburyport	Rupert A Nock Middle School	1971	6-8	882	845	161,500	161,500	Feasibility Study	Reno	\$21,421,329	TBD	44.26%	TBD
Peabody	J. Henry Higgins Middle School	1972	6-8	1,360	1,340	235,347	224,000	Feasibility Study	New	\$74,451,784	TBD	53.32%	TBD



## Preferred Schematic | Greater Lowell

---

### Greater Lowell Technical High School

- Built in 1974
- Grades 9-12
- Enrollment: 1,990
- Proposed scope of project: Addition/Renovation
- Existing square footage: 482,954
- Total square footage of proposed project: 505,000
- Estimated construction cost of preferred schematic: \$54,261,760



## Preferred Schematic | Newburyport

---

### Rupert A. Nock Middle School

- Built in 1971
- Grades 4-8: Edward G. Molin Elementary (4-5); Rupert A. Nock Middle (6-8)
- Enrollment: 845
- Proposed scope of project: Renovation
- Existing square footage: 161,500
- Total square footage of proposed project: 161,500
- Estimated construction cost of preferred schematic: \$21,421,329



## Preferred Schematic | Peabody

---

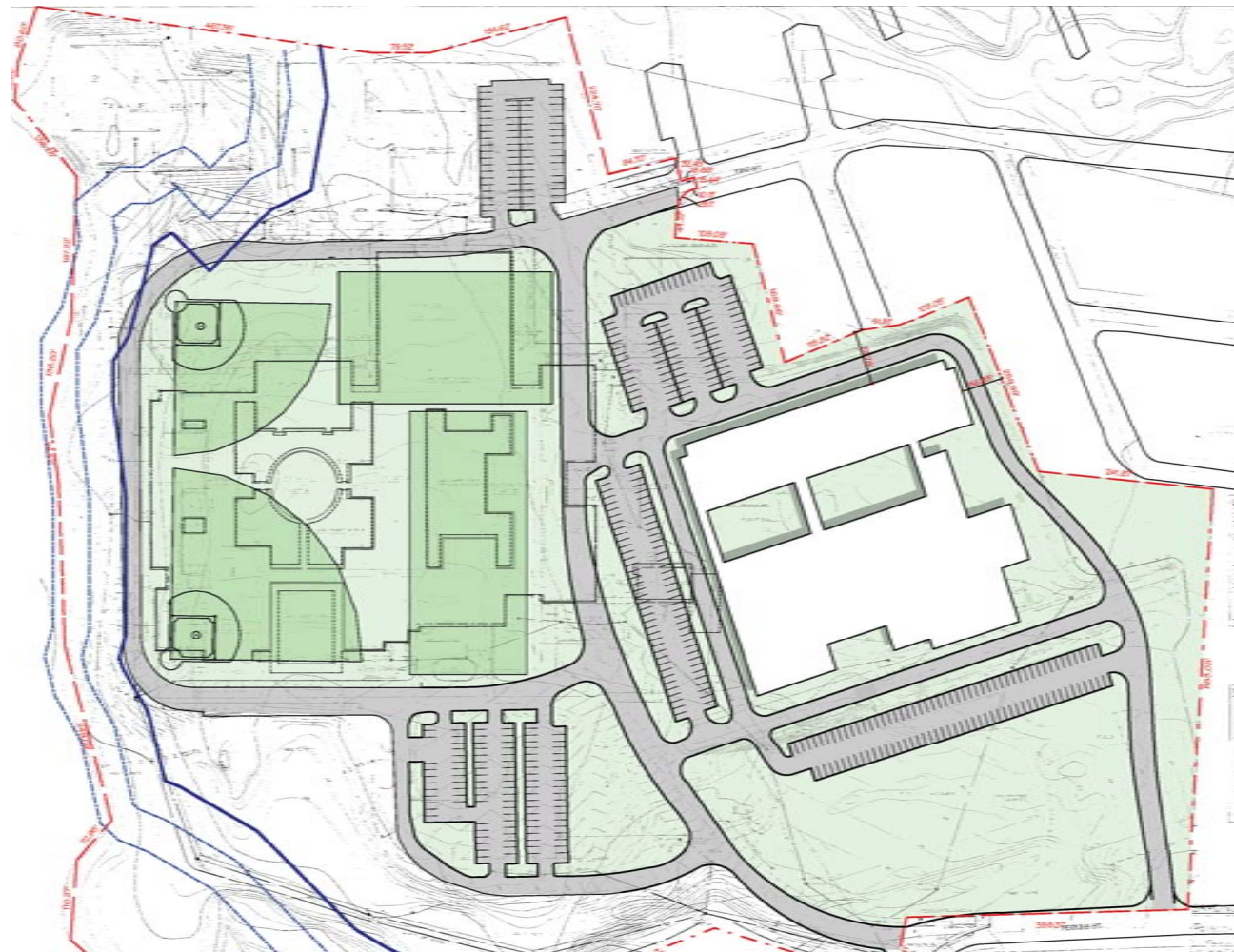
### J. Henry Higgins Middle School

- Built in 1972
- Grades 6-8
- Enrollment: 1,340
- Proposed scope of project: New
- Existing square footage: 235,347
- Total square footage of proposed project: 224,000
- Estimated construction cost of preferred schematic: \$74,451,784



# Preferred Schematic | Peabody

## J. Henry Higgins Middle School





# Project Scope and Budget

District	School	Year Built	Grades	2011/12 Enroll	Projected Enroll	Existing Sq.Ft.	Proposed Square Footage	Project Scope	Total Project Budget	Basis of Estimated Total Facilities Grant	Reimbursement Rate*	Estimated Maximum Total Facilities Grant
Lincoln	Lincoln School	1948	K-8	626	600	141,664	139,534	Add/ Reno	\$49,956,541	\$44,350,385	44.80%	\$19,868,972
Monomoy Regional	Monomoy Regional High School	1962	8-12	422 (Harwich) 224 (Chatham)	700 (8-12)	96,000	168,000	New - Model	\$64,701,185	\$54,629,090	51.53%	\$28,150,370
West Bridgewater	West Bridgewater Middle-Senior High School	1951	7-12	602	625	105,480	141,250	New	\$63,734,253	\$49,881,639	54.16%	\$27,015,895
									<b>\$178,391,979</b>	<b>\$148,861,114</b>		<b>\$75,035,237</b>

\*See district specific slides for conditional reimbursement rate incentive point information





# Project Scope and Budget | Lincoln

---

## Lincoln School

- Built in 1948
- Addition/Renovation
- Proposed Square Footage: 139,534
- Grades K-8
- District Total Project Budget: \$49,956,541
- Basis of Estimated Maximum Total Facilities Grant: \$44,350,385
- Reimbursement Rate: 44.80%\*
- Estimated Maximum Total Facilities Grant: \$19,868,972
- Special Town Meeting Date: November 3, 2012
- Debt Exclusion: November 6, 2012

\* The MSBA has provisionally included one incentive point for the Construction Manager at Risk construction delivery method, subject to the District receiving approval from the Office of the Inspector General to utilize this method. The MSBA also has provisionally included two incentive points for energy efficiency, subject to the District meeting certain sustainability requirements for the project. If, however, the District does not qualify for these incentive points, its reimbursement rate will be adjusted accordingly.



# Project Scope and Budget | Monomoy

---

## Monomoy Regional High School

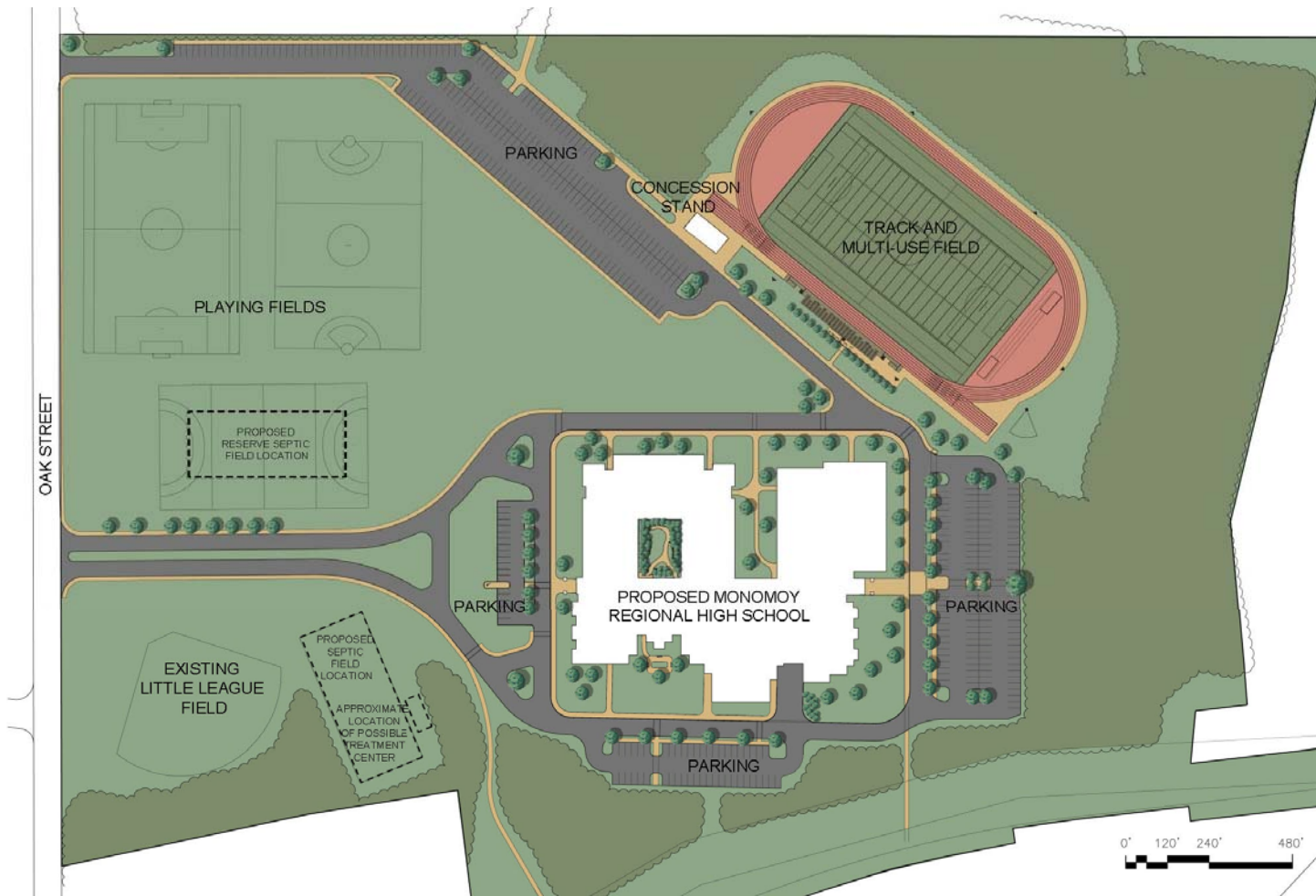
- Built in 1962
- New Model
- Proposed Square Footage: 168,000
- Grades 8-12
- District Total Project Budget: \$64,701,185
- Basis of Estimated Maximum Total Facilities Grant: \$54,629,090
- Reimbursement Rate: 51.53%\*
- Estimated Maximum Total Facilities Grant: \$28,150,370
- Chatham Town Meeting Date: August 27, 2012
- Harwich Town Meeting Date: August 28, 2012
- Debt Exclusion (Harwich and Chatham): September 6, 2012

\*The MSBA has provisionally included two incentive points for energy efficiency, subject to the District meeting certain sustainability requirements for the project. If the District does not meet the requirements for energy efficiency, the District will not qualify for these incentive points, respectively, and the MSBA will adjust the reimbursement rate accordingly. Five additional incentive points have been included as a result of the district's participation in the MSBA's Model School Program. The MSBA will also provide six additional reimbursement points for forming a new regional school district.



# Project Scope and Budget | Monomoy

## Monomoy Regional High School





# Project Scope and Budget | West Bridgewater

---

## West Bridgewater Middle-Senior High School

- Built in 1951
- New Construction
- Proposed Square Footage: 141,250
- Grades 7-12
- District Total Project Budget: \$63,734,253
- Basis of Estimated Maximum Total Facilities Grant: \$49,881,639
- Reimbursement Rate: 54.16%\*
- Estimated Maximum Total Facilities Grant: \$27,015,895
- Town Meeting Date: October 1, 2012
- Special Election Ballot: October 6, 2012

The MSBA has provisionally included two incentive points for energy efficiency, subject to the District meeting certain sustainability requirements for the project. If the District does not meet the requirements for energy efficiency, the District will not qualify for these incentive points, and the MSBA will adjust the reimbursement rate accordingly.



# Project Scope and Budget | West Bridgewater

## West Bridgewater Middle-Senior High School





# Project Update | Southern Worcester County

---

## Baypath Regional Technical High School

### Update on Project Scope and Budget Authorization

- Previously approved on January 25, 2012
- Local override votes failed in seven of the ten member Towns: Auburn, Dudley, North Brookfield, Oxford, Paxton, Rutland, Webster
- The District is pursuing a District Wide Vote in October for which support will be based on the aggregated results of all of the votes rather than unanimous support of all of the individual communities. The District is meeting in early August to discuss potential dates for this District wide vote.
- Staff awaits formal communication from the District for a date to hold a district-wide vote at which time Staff will be recommending an extension beyond September 1<sup>st</sup> to support the districts continued efforts to secure local authorization.



# Project Update | Adams-Cheshire

---

## Hoosac Valley Middle-High School

- Before





# Project Update | Adams-Cheshire

---

## Hoosac Valley Middle-High School

- After







# Project Update | Adams-Cheshire

## Hoosac Valley Middle-High School

- Before





# Project Update | Adams-Cheshire

## Hoosac Valley Middle-High School

- After





# Project Update | Adams-Cheshire

---

## Hoosac Valley Middle-High School

- Before





# Project Update | Adams-Cheshire

---

## Hoosac Valley Middle-High School

- After





# Summary of Bid Data

Year	Number of Projects	Design Basis for Enrollment	Project Budget	Construction Budget
2009	11	8,188	\$205.6M	\$171.5M
2010	33	26,184	\$1.37B	\$1.07B
2011	20	16,113	\$896.6M	\$688.6M
2012	29	23,997	\$1.48B	\$1.14BM
2013	9	7,705	\$559M	\$453.5M
<b>Grand Total</b>	102	82,187	\$4.51B	\$3.52B

Note: These numbers are based on preliminary information received from the District and are subject to further review and calculation.

- 16 projects have completed the bid process in 2012.
  - 5 projects are CM@R and 11 are DBB.
- 13 Additional Projects Anticipated to Bid in 2012
- Bids received in May - June:
  - Quincy, Marblehead, Somerset-Berkley RSD, Fairhaven
- Anticipated Bids in 2012:
  - July – Dracut, Westfield, Saugus
  - August – Essex North Shore Agricultural Tech, Marshfield



# Project Estimate vs. 2012 Bid Amount (1/2)

- To date in 2012, 11 Bids Received & 5 GMPs Finalized

District	School	Scope	Project Type	Bid Date	Construction Estimate **	Bid Amount **	Variance from Project Estimate	Reimbursement Rate	Potential Grant Variance *
				Total	\$430,741,999	\$425,620,503	\$5,121,496	-	\$6.58M
Winchester	Vinson-Owen ES	New	DBB	Jan-12	\$21,731,066	\$20,446,000	\$1,285,066	40.00%	\$514K
Douglas	Douglas ES	New	DBB	Jan-12	\$24,832,888	\$24,427,680	\$405,208	62.07%	\$252K
Douglas	Douglas IS	Repair	DBB	Jan-12	\$14,180,050	\$11,979,355	\$2,200,695	54.16%	\$1.19M
Norfolk County Agricultural School District	Norfolk County Agr. HS	Add/Reno	DBB	Feb-12	\$22,257,709	\$20,583,059	\$1,674,650	55.76%	\$934K
Ashburnham-Westminster RSD	Briggs ES	New	CMR	Mar-12	\$24,780,629	\$24,780,000	\$629	58.46%	0.368K
Arlington	Thompson ES	New	DBB	Mar-12	\$15,766,681	\$14,794,000	\$972,681	50.42%	\$490K
Springfield	Forest Park MS	Add/Reno	CMR	Mar-12	\$34,000,000	\$33,552,930	\$447,070	90.00%	\$402K
Norton	Norton HS	Add/Reno	CMR	Mar-12	\$27,023,541	\$26,632,634	\$390,907	64.42%	\$544K
Somerville	E. Somerville Community School	Add/Reno	CMR	Mar-12	\$26,170,102	\$32,590,244	-\$6,420,142	80.00%	\$0
Southeastern Regional Vocational Technical School District	Southeastern RVTHS	Add/Reno	CMR	Apr-12	\$26,576,567	\$26,500,000	\$76,567	80.00%	0.061K

\*These numbers are based on preliminary information received from the district and are subject to further review and calculation.

\*\*The construction estimate and bid amount do not include pre-construction services and alternatives.



## Project Estimate vs. 2012 Bid Amount(2/2)

- To date in 2012, 11 Bids Received & 5 GMPs Finalized

District	School	Scope	Project Type	Bid Date	Construction Estimate **	Bid Amount **	Variance from Project Estimate	Reimbursement Rate	Potential Grant Variance *
				Total	\$430,741,999	\$425,620,503	\$5,121,496	-	\$6.58M
Hingham	Hingham MS	New	DBB	May-12	\$50,432,439	\$48,705,000	\$1,727,439	43.87%	\$758K
Lynnfield	Lynnfield HS	Add/Reno	DBB	May-12	\$3,165,166	\$2,886,991	\$278,175	43.94%	\$122K
Quincy	Central MS	New	DBB	May-12	\$32,607,101	\$32,124,910	\$482,191	80.00%	\$386K
Marblehead	Glover ES	New	DBB	May-12	\$20,200,000	\$20,868,000	-\$668,000	40.00%	\$0
Somerset Berkley RSD	Somerset Berkley RVHS	New	DBB	Jun-12	\$66,840,822	\$65,799,700	\$1,041,122	67.48%	\$703K
Fairhaven	Rogers ES	New	DBB	Jun-12	\$20,177,238	\$18,950,000	\$1,227,238	63.50%	\$799K

\*These numbers are based on preliminary information received from the district and are subject to further review and calculation.

\*\*The construction estimate and bid amount do not include pre-construction services and alternatives.



# Audit Status Update

---

- Former Program Projects
  - MSBA has completed final audits of 777 of the 788 Former Program projects totaling over \$14.7 billion in submitted costs;
  - Achieved audit savings of over \$1.4 billion; and
  - Audited over \$740 million in costs for the 11 remaining Waiting List projects currently submitting monthly requests for reimbursement.
  
- New Program Projects
  - MSBA has completed final audits for 82 projects totaling almost \$313 million in submitted costs; and
  - Audited over \$1.5 billion in costs for the 261 projects currently submitting monthly requests for reimbursement.





# Today's Board Vote

## Exhibit D

---

### New Program Final Closeout Audits

- Acton C.T. Douglas Elementary School
- Gardner Elm Street School
- Gardner Gardner High School
- Gardner Waterford Street School
- Manchester-Essex Manchester-Essex Regional Middle High School
- Narragansett Narragansett Regional Middle School
- Reading Birch Meadow Elementary School
- Reading J. Warren Killam Elementary School
- Westfield Highland Elementary School
- Westfield Southampton Road Elementary School
- Weymouth Abigail Adams Middle School
- Wilmington Shawsheen Elementary School



# Closeout Audits - New Program

District	School Name	MSBA Commissioning	Reimb. Rate	Estimated Budget	Final Construction Costs Submitted	Basis for Final Total Facilities Grant	Final Total Facilities Grant
Acton	C.T. Douglas Elementary School	na	43.85%	\$471,699	\$474,266	\$471,289	\$206,660
Gardner	Elm Street School	X	73.28%	249,105	232,247	230,706	169,061
	Gardner High School	X	73.28%	1,639,532	1,587,533	1,572,457	1,152,296
	Waterford Primary School	X	73.28%	277,375	277,374	270,975	198,570
Manchester-Essex RSD	Manchester-Essex Regional Middle High School	na	40.00%	49,445,903	49,022,879	42,754,923	17,101,969
Narragansett RSD	Narragansett Regional Middle School	X	59.84%	1,151,031	1,108,903	1,108,864	663,544
Reading	Birch Meadow Elementary School	X	47.21%	787,640	680,830	655,355	309,393
	J. Warren Killam Elementary School	X	47.21%	1,349,407	1,191,805	1,059,581	500,228
Westfield	Highland Elementary School	X	62.74%	1,106,972	812,651	721,155	452,453
	Southampton Road Elementary School	X	62.74%	1,143,292	835,606	818,444	513,492
Weymouth	Abigail Adams Middle School	X	54.16%	899,421	839,399	789,874	427,796
Wilmington	Shawsheen Elementary School	X	48.47%	861,282	830,588	826,783	400,742
				<b>\$59,382,659</b>	<b>\$57,894,081</b>	<b>\$51,280,406</b>	<b>\$22,096,205</b>



# Board Vote Exhibit D

---

## New Program Final Closeout Audits

- Acton C.T. Douglas Elementary School
- Gardner Elm Street School
- Gardner Gardner High School
- Gardner Waterford Street School
- Manchester-Essex Manchester-Essex Regional Middle High School
- Narragansett Narragansett Regional Middle School
- Reading Birch Meadow Elementary School
- Reading J. Warren Killam Elementary School
- Westfield Highland Elementary School
- Westfield Southampton Road Elementary School
- Weymouth Abigail Adams Middle School
- Wilmington Shawsheen Elementary School

**Total Grant Value of \$22,096,205**



# Grant Payments Update

## *Fiscal Year 2012 Year End Total*

<b>Program</b>	<b>Grant Payments</b>	<b># Projects</b>	<b># Districts</b>
Core/Green Repair/Accelerated Repair	504,298,322	243	150
Prior Grants	393,960,046	372	160
Waiting List	110,220,287	52	34
<b>Total</b>	<b>1,008,478,655</b>	<b>667</b>	<b>242</b>

## *Fiscal Year 2013 Year-to-Date*

<b>Program</b>	<b>Grant Payments</b>	<b># Projects</b>	<b># Districts</b>
Core/Green Repair/Accelerated Repair	13,971,044	30	26
Prior Grants	95,924,058	139	99
Waiting List	20,803,623	33	23
<b>Total</b>	<b>130,698,725</b>	<b>202</b>	<b>136</b>



# Sales Tax Update

FY 2012 final SMART collections: \$670.5 million

- Exceeded year-end benchmark by \$6.2 million (0.93%)
- FY 2012 collections represent \$15.9 million (2.4%) growth over previous year

