

# Massachusetts School Building Authority

Steven Grossman  
*Chairman, State Treasurer*

John K. McCarthy  
*Executive Director*



## Board Meeting

January 30, 2013

January 30, 2013

[www.MassSchoolBuildings.org](http://www.MassSchoolBuildings.org)



# Table of Contents

---

- Executive Director's Report
  - Project Visits and Local Votes
- Project Votes
- Project Overview Report
- Audit Update
- Finance Update



# Project Visits and Local Votes

- Since the November 14, 2012 Board meeting, the MSBA has visited 37 projects.
- Three Districts have voted affirmatively to support proposed Core Program projects.
- Three Districts have voted affirmatively to support proposed Science Lab Initiative projects.
- Scituate has voted affirmatively to appropriate feasibility funds.

Project Visits			Project Votes
Arlington	Hudson	Quincy	Ayer Shirley RSD
Berlin-Boylston RSD	Leominster	Rockland	Gardner
Burlington	Lexington	Salem (Collins)	Greater Lowell RVTSD
Danvers	Longmeadow	Saugus	Holyoke
Douglas	Lynnfield	Shrewsbury	Medford
Dracut	Marblehead	Somerset-Berkley	North Adams
Duxbury	Marshfield	Somerville	Scituate
East Bridgewater	Maynard	Southeastern RVTSH	
Easthampton	Medway	Springfield (Forest Park)	
Essex Aggie	Methuen	Sutton	
Fairhaven	Norfolk Aggie RSD	West Springfield	
Fall River	Norton	Winchester	
Hingham			



# Project Milestones

Since the November 14, 2012 Board meeting, the MSBA has attended 5 project milestone celebrations.

## Groundbreakings

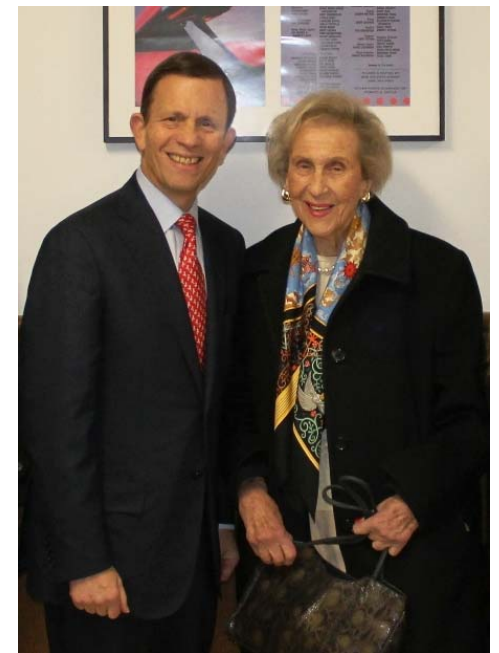
Weston  
Marblehead

## Ribbon Cutting Ceremonies

Brookline (Heath)  
Brookline (Runkle)  
Burlington



Left: Burlington Superintendent Eric Conti, Burlington School Building Committee Chair Christine Monaco, MSBA Executive Director Jack McCarthy, and State Representative Ken Gordon at the Ribbon Cutting Ceremony for Marshall Simonds Middle School in Burlington



Right: Treasurer Steve Grossman and his mother, Shirley Grossman, a student of the Runkle School, class of 1935, at the Ribbon Cutting Ceremony for the Runkle School in Brookline



# Project Visits and Local Votes

Upcoming events anticipated in February and March

Project Visits			Project Votes
<p>Arlington Berlin-Boylston Danvers Douglas Dracut Duxbury Easthampton Essex Aggie Fairhaven Fall River Hudson</p>	<p>Leominster Longmeadow Lynnfield Marblehead Marshfield Maynard Medway Methuen Norfolk Aggie RSD Norton Quincy</p>	<p>Salem (Collins) Salem (Saltonstall) Saugus Shrewsbury Somerville Springfield (Dryden) Springfield (Forest Park) Sutton West Springfield Winchester</p>	<p><b><u>February</u></b> North Adams Revere South Hadley Springfield (Central High School)</p> <p><b><u>March</u></b> New Bedford Chicopee</p>



# Science Lab Initiative Program Removal

---

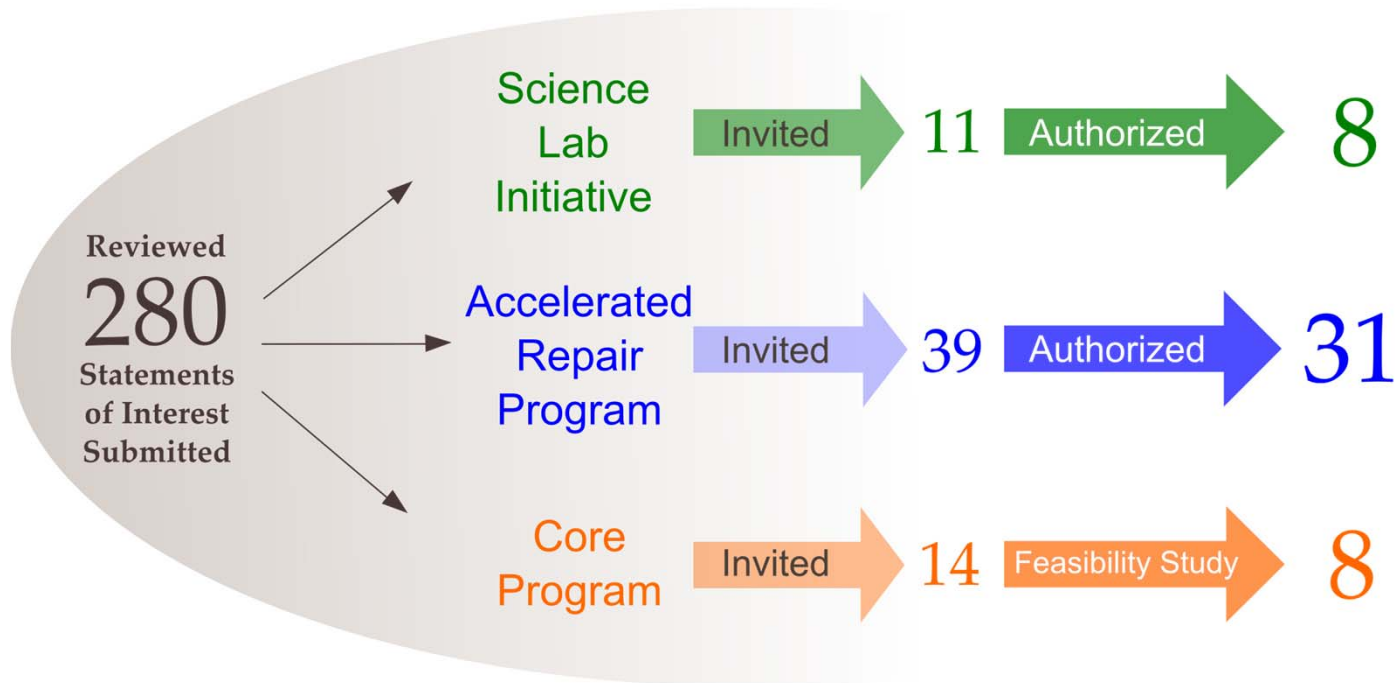
District	School	Invite Date
Nashoba Regional School District	Nashoba Regional High School	June 6, 2012



# FY 2012 Statement of Interest Overview

## Science Lab Initiative

- 13 SOI filed for the Science Lab Initiative
- 11 invited, 3 withdrew
- 8 Authorized for Project Funding Agreement



## Accelerated Repair Program

- 39 SOIs invited
- 6 Withdrew/pending withdrawal
  - \*2 projects being prepared for April Board
- 31 Projects authorized for Project Funding Agreement

## Core Program

- 14 SOIs invited to Eligibility Period
  - \*2 additional SOIs for Board consideration today
- 2 Districts withdrew
- 8 invited into Feasibility Study
- 4 Districts working within Eligibility Period



## FY 2013 Statement of Interest Process

---

- 2013 SOI Process opened on January 9, 2013
  - Open through April 10, 2013
- Submitting an SOI is the critical first step in the MSBA's program for school building construction and renovation grants
- To date one SOI has been filed, and 81 Districts have requested access to the SOI System





# Invitation to Eligibility Period

District	School	Year Built	Grade	Enrollment	Existing Square Footage	Additional Considerations
Dedham	Early Childhood Education Center	1931	PK-K	*321	26,000	-
Granby	West Street Elementary School	1941	PK-3	*300	44,139	Invitation to Feasibility Study is subject to further discussion during the Eligibility Period and agreement between the MSBA and the District as to the level of the MSBA's participation, if any, in the Feasibility Study/Schematic Design phase.

\*2011-2012 Enrollment



# Invitation to Feasibility Study

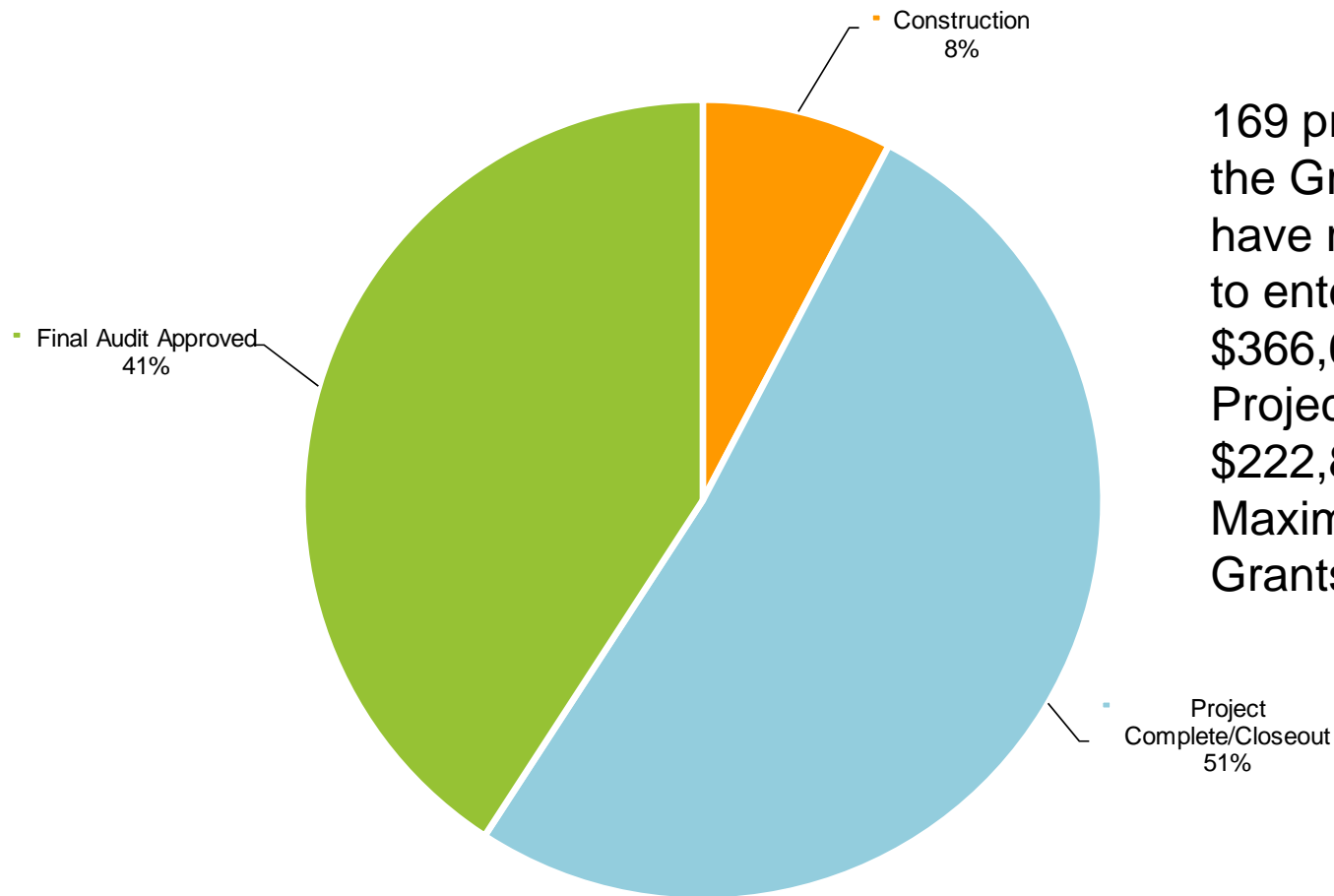
Two Districts have completed all Eligibility Period requirements, appropriated funding. Staff recommends that these two Districts be invited into the Feasibility Study phase of the Capital Pipeline.

District	School	Year Built	Grade	Enrollment	Existing Square Footage
Brookline	Edward Devotion School	1922	K-8	*830	138,300
Georgetown	Georgetown Middle-High School	1961	7-12	*700	150,000

\*Design Enrollment Certification



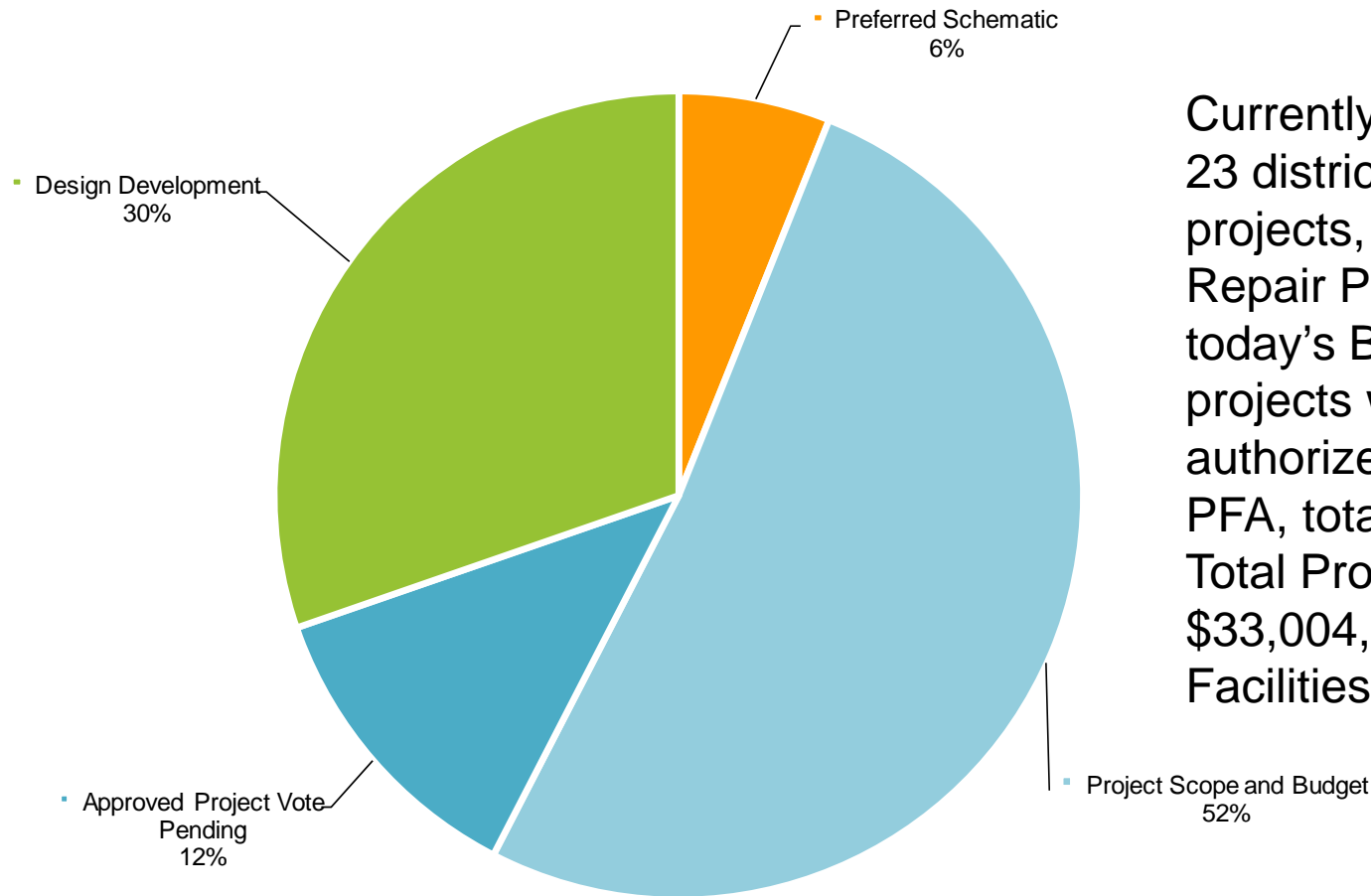
# Green Repair Program Status



169 projects participating in the Green Repair Program have received authorization to enter into a PFA, totaling \$366,647,226 in Total Project Costs and \$222,885,258 in MSBA Maximum Total Facilities Grants.



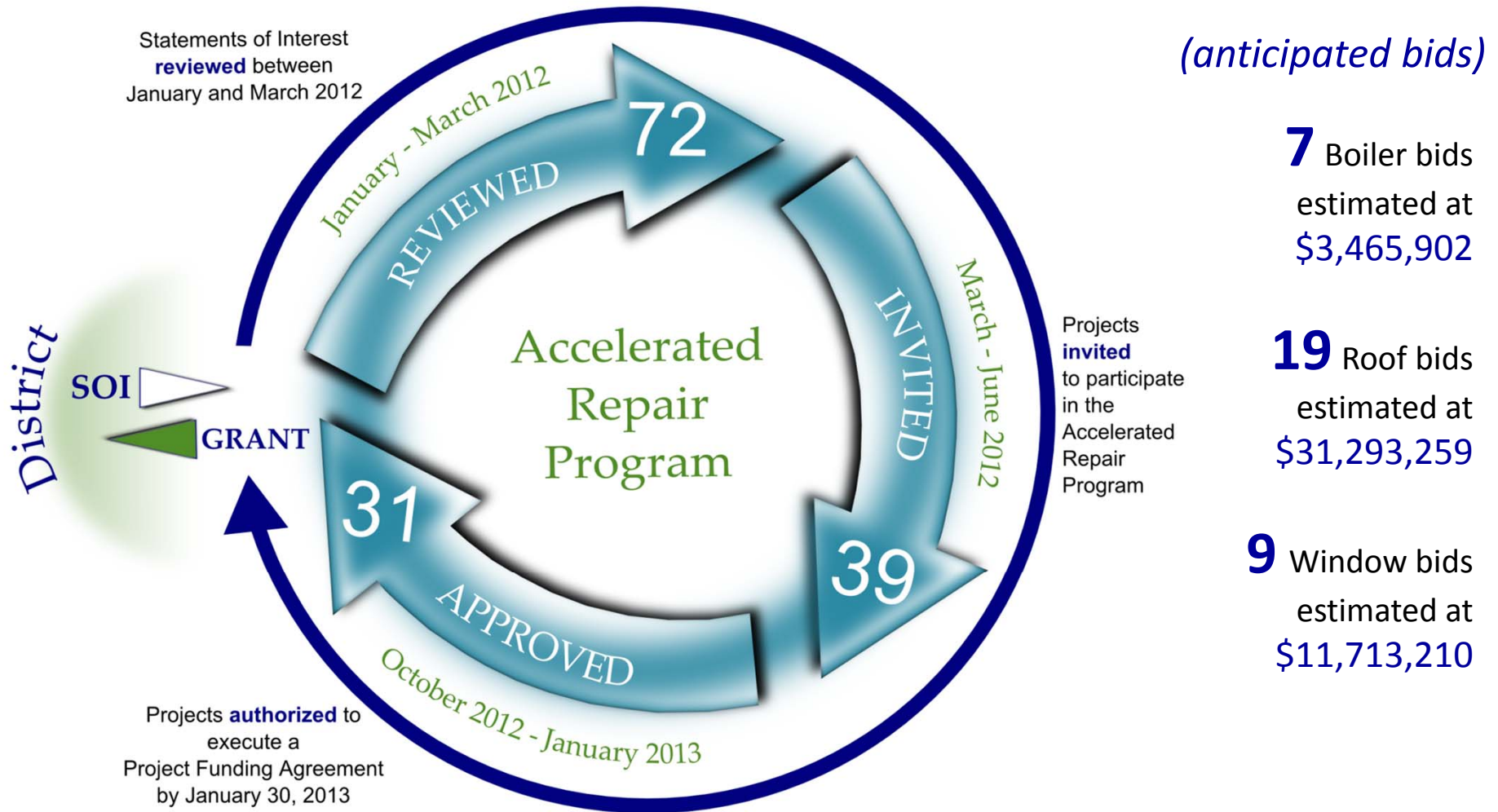
# Accelerated Repair Program Status



Currently, there are a total of 23 districts, representing 33 projects, in the Accelerated Repair Program. With today's Board approval, 31 projects will have been authorized to enter into a PFA, totaling \$52,726,540 in Total Project Costs and \$33,004,220 in MSBA Total Facilities Grant funding.



# Accelerated Repair Program: Roofs, Windows, & Boilers





# Accelerated Repair Program Project Funding Agreement Authorization

District	School	Scope	Total Project Budget	Estimated Maximum Total Facilities Grant
Attleboro	A. Irvin Studley Elementary School	Roof	\$929,715	\$513,158
Blackstone-Millville Regional School District	Augustine F. Maloney Elementary School	Roof	\$1,680,034	\$907,326
	Blackstone-Millville Regional High School	Roof	\$3,866,801	\$1,974,810
	John F. Kennedy Elementary School	Roof	\$2,716,777	\$1,486,944
Leominster	Fall Brook Elementary School	Boiler	\$1,247,850	\$849,630
	Southeast Elementary School	Roof, Boiler	\$3,751,737	\$2,591,589
Norton	J.C. Solmonese Elementary School	Roof	\$1,500,000	\$777,999
Quaboag Regional School District	Warren Community Elementary School	Boiler	\$269,356	\$174,052
Southampton	William E. Norris Elementary School	Roof	\$1,799,244	\$945,923
Taunton	Harold H. Galligan School	Roof	\$756,741	\$524,220



# Accelerated Repair Program Project Funding Agreement Authorization

District	School	Scope	Total Project Budget	Estimated Maximum Total Facilities Grant
Wayland	Wayland Middle School	Roof	\$2,914,694	\$1,027,655
Wilmington	North Intermediate School	Window	\$1,478,019	\$705,182
Worcester	Chandler Magnet School	Window	\$4,426,598	\$3,323,875
	Dr. James A. Caradonio New Citizens Center	Window, Boiler	\$1,350,553	\$1,011,543
	Jacob Hiatt Magnet School	Boiler	\$428,196	\$314,619
	Lake View School	Window	\$1,435,093	\$1,070,870
	May Street School	Window	\$2,009,863	\$1,505,328
		<b>Totals:</b>	\$32,561,271	\$19,704,723



## Science Lab Initiative Project Funding Summary

---

Board Approval	Total Project Budget	Estimated Maximum Total Facilities Grant
October 2012	\$9,289,540	\$4,425,408
November 2012	\$16,836,450	\$10,916,052
January 2013	\$45,922,830	\$31,425,407
<b>TOTAL:</b>	<b>\$72,048,820</b>	<b>\$46,766,867</b>





# Science Lab Initiative Project Funding Agreement Authorization

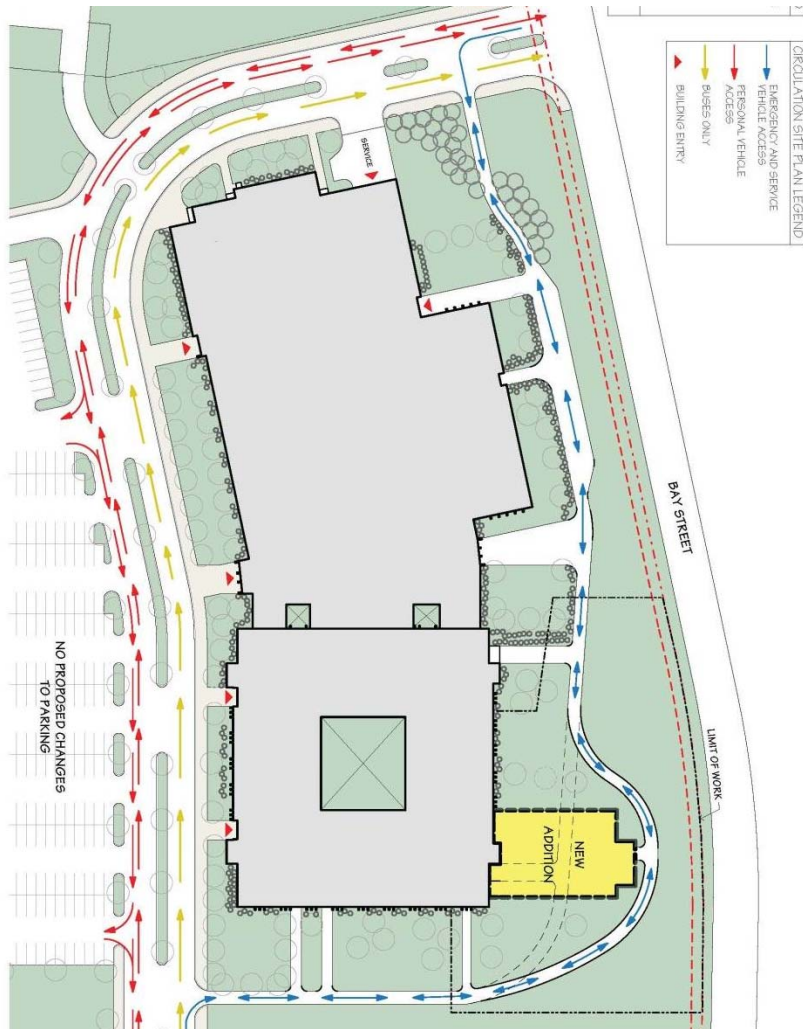
---

District	School	Total Project Budget	Estimated Maximum Total Facilities Grant
Medford	Medford High School	\$13,834,929	\$7,506,809
Springfield	Springfield Central High School	\$32,087,901	\$23,918,598
<b>Total:</b>		<b>\$45,922,830</b>	<b>\$31,425,407</b>



# Science Lab Initiative | Springfield

## Springfield Central High School





# Project Scope and Budget

## Vote - Project Scope and Budget

District	School	Year Built	Grades	2011/12 Enroll.	Projected Enroll.	Existing Sq.Ft.	Proposed Square Footage	Project Scope	Total Project Budget	Estimated Basis of Total Facilities Grant	Reimbursement Rate*	Estimated Maximum Total Facilities Grant
Old Colony Regional Voc/Tech School District	Old Colony Regional Voc/Tech High School	1975	9-12	572	572	106,000	106,000	Repair	\$2,711,016	\$2,552,823	54.16%	\$1,382,609
Revere	William McKinley Elementary School	1905	PK-5	483	690 (K-5)	43,570	103,650	New	\$44,382,396	\$35,123,810	80.00%	\$28,099,048

**Totals:                    \$47,093,412    \$37,676,633                    \$29,481,657**

\*See district specific slides for conditional reimbursement rate incentive point information



# Project Scope and Budget | Old Colony Regional Vocational Technical School District

---

## Old Colony Regional Vocational Technical High School

- Built in 1975
- Roof Replacement and one Science Classroom Renovation
- Proposed Square Footage: 106,000
- Grades 9-12
- District Total Project Budget: \$2,711,016
- Estimated Basis of Total Facilities Grant: \$2,552,823
- Reimbursement Rate: 54.16%
- Estimated Maximum Total Facilities Grant: \$1,382,609
- Member Community Vote: Approved June 2011



## Project Scope and Budget | Revere

---

### William McKinley Elementary School

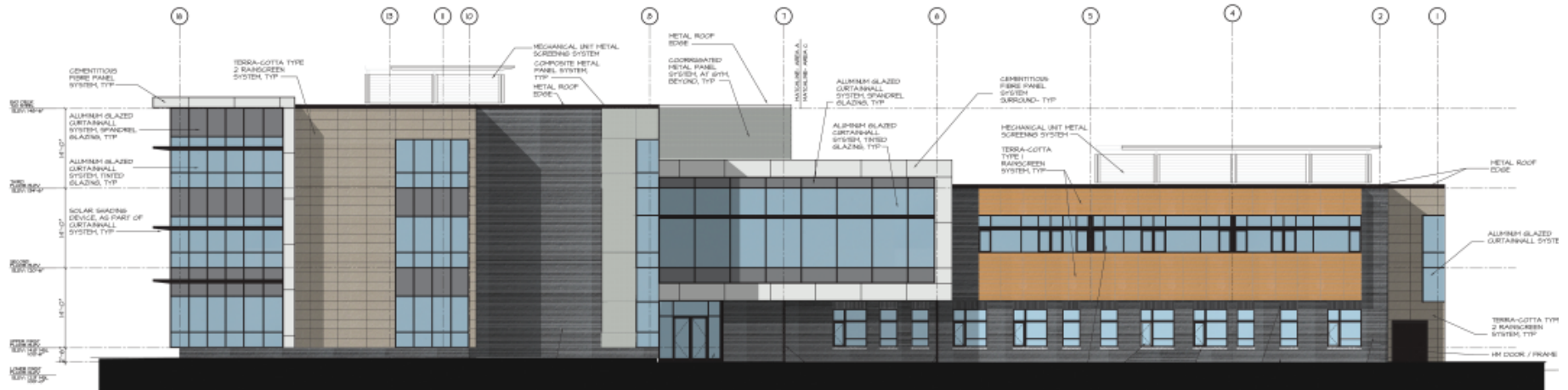
- Built in 1905
- New Construction
- Proposed Square Footage: 103,650
- Grades K-5
- District Total Project Budget: \$44,382,396
- Estimated Basis of Total Facilities Grant: \$35,123,810
- Reimbursement Rate: 80.00%\*
- Estimated Maximum Total Facilities Grant: \$28,099,048
- City Council Vote: February 2013

\*By statute, 80% is the maximum reimbursement rate. Here, the City's base reimbursement rate is 80% and whether the City qualifies for incentive points will not affect the City's 80% reimbursement rate.



# Project Scope and Budget | Revere

## William McKinley Elementary School







# Summary of Bid Data

Year	Number of Projects	Design Basis for Enrollment	Project Budget	Construction Budget
2009	11	8,188	\$205.6 M	\$171.5 M
2010	33	26,184	\$1.37 B	\$1.07 B
2011	20	16,113	\$896.6 M	\$688.6 M
2012	25	21,157	\$1.28 B	\$979.2 M
2013	22	17,305	\$1.07 B	\$855.3 M
2014	1	1,990	\$65 M	\$53.2 M
<b>Grand Total</b>	112	90,937	\$4.89 B	\$3.82 B

Note: These numbers are based on preliminary information received from the District and are subject to further review and calculation.

- Anticipated Bids in 2013:
  - January – Lexington, Newburyport (Bresnahan), Monomoy Regional, Stoneham, Wilmington
  - February – North Reading, Assabet Valley Regional
  - March – Newburyport (Nock)
- 23 Projects were initially anticipated to bid in 2012
- 25 Projects completed the bid process in 2012



# Project Estimate vs. 2012 Bid Amount

- 15 bids received & 10 GMP's executed in 2012
- Of the 25 projects, 19 bids came in within the estimated budget

District	School	Scope	Project Type	Bid Date	Construction Estimate **	Bid Amount **	Variance from Project Estimate	Reimbursement Rate	Potential Grant Variance *
				Total	\$998,982,271	\$990,719,991	\$8,262,280	-	\$11.5M
Winchester	Vinson-Owen ES	New	DBB	Jan-12	\$21,731,066	\$20,446,000	\$1,285,066	40.00%	\$514K
***Douglas	Douglas ES	New	DBB	Jan-12	\$24,832,888	\$24,427,680	\$405,208	62.07%	\$252K
***Douglas	Douglas IS	Repair	DBB	Jan-12	\$14,180,050	\$11,979,355	\$2,200,695	54.16%	\$1.19M
Norfolk County Agricultural School District	Norfolk County Agr. HS	Add/Reno	DBB	Feb-12	\$22,257,709	\$20,583,059	\$1,674,650	55.76%	\$934K
Ashburham-Westminster	Briggs ES	New	CMR	Mar-12	\$24,780,629	\$24,780,000	\$629	58.46%	\$368
Arlington	Thompson ES	New	DBB	Mar-12	\$15,766,681	\$14,794,000	\$972,681	50.42%	\$490K
Springfield	Forest Park MS	Add/Reno	CMR	Mar-12	\$34,000,000	\$33,552,930	\$447,070	90.00%	\$402K
Norton	Norton HS	Add/Reno	CMR	Mar-12	\$27,023,541	\$26,632,634	\$390,907	64.42%	\$544K
Somerville	E. Somerville Community School	Add/Reno	CMR	Mar-12	\$26,170,102	\$32,590,244	-\$6,420,142	80.00%	\$0
Southeastern Regional Vocational Technical School District	Southeastern RVTHS	Add/Reno	CMR	Apr-12	\$26,576,567	\$26,500,000	\$76,567	80.00%	\$61K
Hingham	Hingham MS	New	DBB	May-12	\$50,432,439	\$48,705,000	\$1,727,439	43.87%	\$758K

\*These numbers are based on preliminary information received from the district and are subject to further review and calculation.

\*\*The construction estimate and bid amount do not include pre-construction services and alternatives.

\*\*\*Douglas ES & IS projects are two separate projects but were bid as one project.





# Project Estimate vs. 2012 Bid Amount

- 15 bids received & 10 GMP's executed in 2012
- Of the 25 projects, 19 bids came in within the estimated budget

District	School	Scope	Project Type	Bid Date	Construction Estimate **	Bid Amount **	Variance from Project Estimate	Reimbursement Rate	Potential Grant Variance *
				Total	\$998,982,271	\$990,719,991	\$8,262,280	-	\$11.5M
Lynnfield	Lynnfield HS	Add/Reno	DBB	May-12	\$3,165,166	\$2,886,991	\$278,175	43.94%	\$122K
Methuen	Metheun HS	Add/Reno	CMR	May-12	\$74,917,204	\$74,482,855	\$434,349	68.84%	\$299K
Quincy	Central MS	New	DBB	May-12	\$32,607,101	\$32,124,910	\$482,191	80.00%	\$386K
Marblehead	Glover ES	New	DBB	May-12	\$20,200,000	\$20,868,000	-\$668,000	40.00%	\$0
Somerset Berkley RSD	Somerset Berkley RVHS	New	DBB	Jun-12	\$66,840,822	\$65,799,700	\$1,041,122	67.48%	\$703K
Fairhaven	Rogers ES	New	DBB	Jun-12	\$20,177,238	\$18,950,000	\$1,227,238	63.50%	\$799K
Dracut	Dracut Sr. HS	Add/Reno	DBB	Jul-12	\$47,290,611	\$45,900,000	\$1,390,611	62.50%	\$869K
Westfield	Abner Gibbs ES	New	DBB	Aug-12	\$28,154,971	\$25,031,000	\$3,123,971	67.89%	\$2.12M
Marshfield	Marshfield HS	New	DBB	Aug-12	\$80,848,464	\$79,590,000	\$1,258,464	55.61%	\$700K
Saugus	Belmonte MS	Repair	CMR	Aug-12	\$15,712,630	\$15,707,249	\$5,381	53.32%	\$2.8K
Franklin	Franklin HS	New	DBB	Oct-12	\$87,914,728	\$86,778,700	\$1,136,028	59.52%	\$676K
Duxbury	Duxbury HS/MS	New	CMR	Oct-12	\$99,196,234	\$99,515,090	-\$318,856	45.13%	\$0
Springfield	Dryden ES	Add/Reno	CMR	Oct-12	\$10,720,901	\$11,476,091	-\$755,190	80.00%	\$0
****Essex-NS	ENSATHS	New	CMR	Nov-12	\$99,484,995	\$102,346,937	-\$2,861,942	62.00%	\$0
Weston	Field ES	New	DBB	Nov-12	\$23,999,534	\$24,271,566	-\$272,032	34.54%	\$0

\*These numbers are based on preliminary information received from the district and are subject to further review and calculation.

\*\*The construction estimate and bid amount do not include pre-construction services and alternatives.

\*\*\*Douglas ES & IS projects are two separate projects but were bid as one project.

\*\*\*\* Does Not include DCAM's scope of work



# Audit Status Update

---

- **Former Program Projects**
  - Completed final audits of 779 of the 788 Former Program projects totaling approximately \$14.8 billion in submitted costs
  - Achieved audit savings of over \$1.4 billion
  - Audited over \$710 million in costs for the 9 remaining Waiting List projects currently submitting monthly requests for reimbursement
- **New Program Projects**
  - Completed final audits for 119 projects totaling almost \$379.5 million in submitted costs
  - Audited almost \$2.1 billion in costs for the 212 projects currently submitting monthly requests for reimbursement



# Today's Board Vote

## Exhibit A

---

### Wait List Program Final Closeout Audits

- New Bedford Nobrega Athletic Building
- Peabody Veterans Memorial High School



# Closeout Audits – Wait List Program

District	School Name	Reimbursement Rate	Estimated Budget	Final Construction Costs Submitted	Audited Eligible Project Costs	Final Total Facilities Grant
New Bedford	Nobrega Athletic Building	90.00%	\$4,219,340	\$4,294,117	\$3,158,250	\$2,842,425
Peabody	Veterans Memorial HS	60.40%	\$21,000,000	\$20,909,703	\$19,113,289	\$11,832,699
			<b>\$25,219,340</b>	<b>\$25,203,820</b>	<b>\$22,271,539</b>	<b>\$14,675,124</b>



## Board Vote Exhibit A

---

### Wait List Program Final Closeout Audits

- New Bedford Nobrega Athletic Building
- Peabody Veterans Memorial High School

**Total Grant Value of \$14,675,124**



# Today's Board Vote: Exhibit D

---

## New Program Final Closeout Audits

- Arlington
- Fitchburg
- Fitchburg
- Fitchburg
- Fitchburg
- Pioneer Valley RSD
- Quabbin RSD
- Shawsheen Valley RSD
- Stratton Elementary School
- Alternative High School
- Reingold Elementary School
- Memorial Middle School
- South Street Elementary School
- Bernardston Elementary School
- Quabbin Regional High School
- Shawsheen Valley Technical High School



# Closeout Audits - New Program

District	School Name	Reimbursement Rate	CX	Estimated Budget	Final Costs Submitted	Basis for Final Total Facilities	Final Total Facilities Grant
Arlington	Stratton Elementary School	47.21%	X	\$2,514,079	\$2,456,479	\$1,529,938	\$722,284
Fitchburg	Fitchburg Alternative High School	80.00%	X	\$421,990	\$398,710	\$371,784	\$297,427
Fitchburg	Reingold Elementary School	80.00%	X	\$678,000	\$674,444	\$606,894	\$485,515
Fitchburg	Memorial Middle School	80.00%	X	\$984,155	\$944,676	\$889,795	\$711,836
Fitchburg	South Street Elementary School	80.00%	X	\$705,391	\$701,789	\$612,269	\$489,815
Pioneer Valley RSD	Bernardston Elementary School	56.26%	N/A	\$7,040	\$7,032	\$7,032	\$3,956
Quabbin RSD	Quabbin Regional High School	57.74%	X	\$3,606,238	\$3,470,997	\$3,339,700	\$1,928,343
Shawsheen Valley RSD	Shawsheen Valley Technical High	56.19%	N/A	\$4,445,257	\$4,378,849	\$4,229,774	\$2,376,710
				<b>\$13,362,150</b>	<b>\$13,032,976</b>	<b>\$11,587,186</b>	<b>\$7,015,886</b>



# Board Vote: Exhibit D

---

## New Program Final Closeout Audits

- Arlington Stratton School
- Fitchburg Alternative High School
- Fitchburg Reingold Elementary School
- Fitchburg Memorial Middle School
- Fitchburg South Street Elementary School
- Pioneer Valley RSD Bernardston Elementary School
- Quabbin RSD Quabbin Regional High School
- Shawsheen Valley RSD Shawsheen Valley Technical High School

**Total Grant Value: \$7,015,886**





# Grant Payments Update

<i>Since November 14, 2012 Board Meeting</i>			
<b>Program</b>	<b>Grant Payments</b>	<b># Projects</b>	<b># Districts</b>
Core/Green Repair/Accelerated Repair	134,480,845	148	104
Prior Grants	124,376,168	138	62
Waiting List	43,274,354	8	4
<b>Total</b>	<b>302,131,367</b>	<b>294</b>	<b>98</b>

<i>Fiscal Year 2013 Year-to-Date*</i>			
<b>Program</b>	<b>Grant Payments</b>	<b># Projects</b>	<b># Districts</b>
Core/Green Repair/Accelerated Repair	342,719,568	228	136
Prior Grants	285,329,113	327	149
Waiting List	82,611,957	40	28
<b>Total</b>	<b>710,660,638</b>	<b>595</b>	<b>204</b>

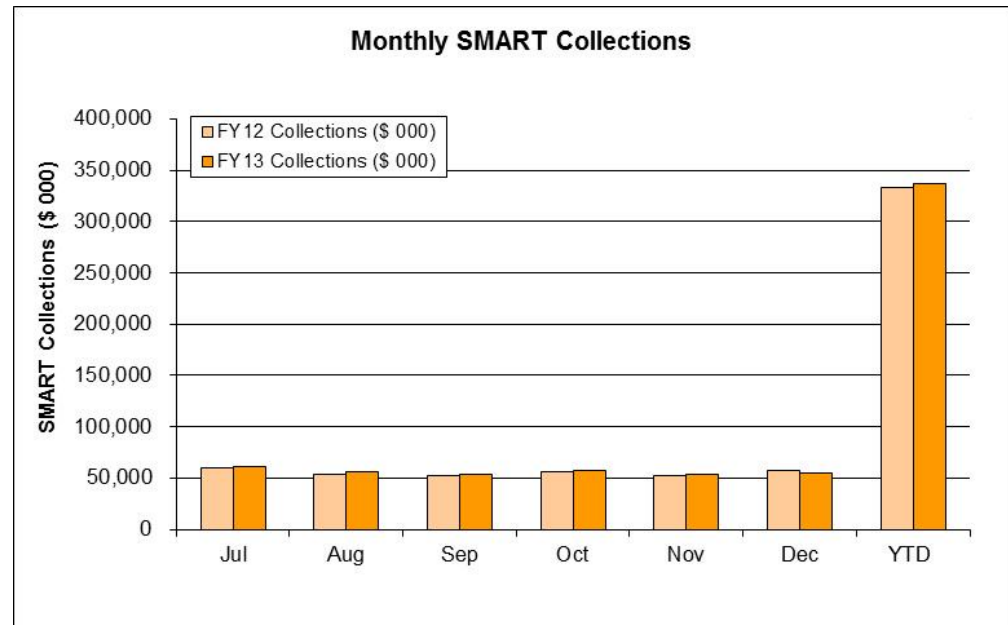
\* Reflects payments processed through January 17, 2013.



# FY13 YTD SMART Collections

Month	Jul	Aug	Sep	Oct	Nov	Dec	YTD
FY12 Collections (\$ 000)	59,646	54,111	52,414	56,434	52,892	57,303	332,801
FY13 Collections (\$ 000)	60,514	56,214	53,253	57,667	54,031	55,053	336,732
Change (\$ 000)	868	2,103	839	1,232	1,138	(2,250)	3,931
% Change	1.5%	3.9%	1.6%	2.2%	2.2%	-3.9%	1.2%

- YTD collections through December were \$4M (1.2%) greater than collections through same period in FY12
- In December 2012, Commonwealth revised FY13 SMART projection to \$682.2M
  - Forecast revision reflects 1.8% anticipated growth





# FY14 SMART Estimates

---

- FY14 Consensus Revenue Estimate
  - \$703.6M projection for MSBA SMART Fund
    - \$21.3 million (\$3.1%) growth over revised FY13 estimate
  
- FY14 House 1 Budget Proposals
  - Sales tax rate reduction from 6.25% to 4.5%
    - Pledge of dedicated sales tax to MSBA, non-impairment covenant reaffirmed
  - Sales Tax Base Changes (e.g., candy, soda)
    - Estimated \$4.2 million for MSBA's SMART collections in addition to Consensus Revenue Estimate