

Massachusetts School Building Authority

Steven Grossman
Chairman, State Treasurer

John K. McCarthy
Executive Director



Board Meeting

April 3, 2013



Table of Contents

- Executive Director's Report
 - Project Visits and Local Votes
- Project Votes
- Project Overview Report
- Audit Update
- Finance Update



Project Visits and Local Votes

- Since the January 30, 2013 Board meeting, the MSBA has visited 37 projects.
- 4 Districts have voted affirmatively to support proposed Core Program projects.
- 1 District has voted affirmatively to support its proposed Science Lab Initiative project.
- 1 District has voted affirmatively to appropriate feasibility funds.

Project Visits			Project Votes
Andover Arlington Berlin-Boylston RSD Danvers Douglas Dracut Duxbury East Bridgewater Easthampton Essex-North Shore RVT Fairhaven Fall River Franklin	Hudson Leominster Lexington Longmeadow Lynnfield Marblehead Marshfield Maynard Medway Methuen Newburyport Norfolk Agricultural	Norton Quincy Salem (Collins) Salem (Saltonstall) Saugus Shrewsbury Somerville Springfield (Dryden) Springfield (Forest Park) Sutton West Springfield Winchester	South Hadley North Adams (City Council) Springfield Revere Newton New Bedford



Project Milestones

Since the January 30, 2013 Board meeting, the MSBA has attended five project milestone celebrations.

Groundbreakings

Monomoy Regional High School

Topping Off Ceremonies

Andover – Bancroft Elementary School
Hingham Middle School
Marshfield High School
Somerset-Berkley Regional High School



Left: Executive Director Jack McCarthy and Treasurer Steven Grossman pose with the Monomoy Shark at the Monomoy Regional High School Groundbreaking Ceremony on March 1, 2013



Right: Executive Director Jack McCarthy signs the final beam at the Somerset-Berkley Regional High School Topping Off Ceremony on March 5, 2013



Project Visits and Local Votes

Upcoming events anticipated in April and May

Project Visits			Project Votes
<p>Andover Arlington Blackstone Valley RSD Danvers Douglas Dracut Duxbury East Bridgewater Essex-North Shore RVT Fall River Franklin Gardner</p>	<p>Hingham Hudson Leominster Lexington Longmeadow Marblehead Marshfield Maynard Melrose Methuen Norfolk Agricultural Norton</p>	<p>Quincy Salem (Collins) Salem (Saltonstall) Saugus Shrewsbury Somerset-Berkley RSD Somerville Springfield (Dryden) Springfield (Forest Park) Sutton West Springfield Winchester</p>	<p><u>April</u></p> <p>North Adams (Public Ballot) Wachusett RSD</p> <p><u>May</u></p> <p>Auburn</p>



Designer Roundtable

Technology in Future Building Design

February 14, 2013

Infrastructure & Connectivity Projects in Massachusetts

Jason Whittet, Deputy Director, Massachusetts Broadband Institute
Dan Vortherms, CEO, Open Cape Corporation

Technology Standards, Education Trends, and Design

Luis Rodriguez, Director, Office of Digital Learning (DESE)
Phil Poinelli, Principal, Symmes Maini McKee
Michael Kerwin, Principal, Vanderweil Engineers

District Policies & Future Goals, Budget, and Impact to End-users

Craig Finley, Asst. Supt., Whitman-Hanson RSD
Robert Jokela, Asst. Supt., Eileen Spinney, Dir. Of Technology
Fitchburg Public Schools



FY 2013 Statement of Interest Process

- 2013 SOI Process opened on January 9, 2013
 - Open through April 10, 2013
- Submitting an SOI is the critical first step in the MSBA's program for school building construction and renovation grants
- 103 Districts have requested and received access to the SOI System
- To date, 84 SOIs have been filed by 51 Districts



Project Removal from Pipeline

Vote - Project Removal from Pipeline

District	School	Invite Date
Lincoln	Lincoln School	September 30, 2009



Invitation to Eligibility Period

Vote - Invitation to Eligibility Period

District	School
Spencer – East Brookfield Regional School District	David Prouty High School



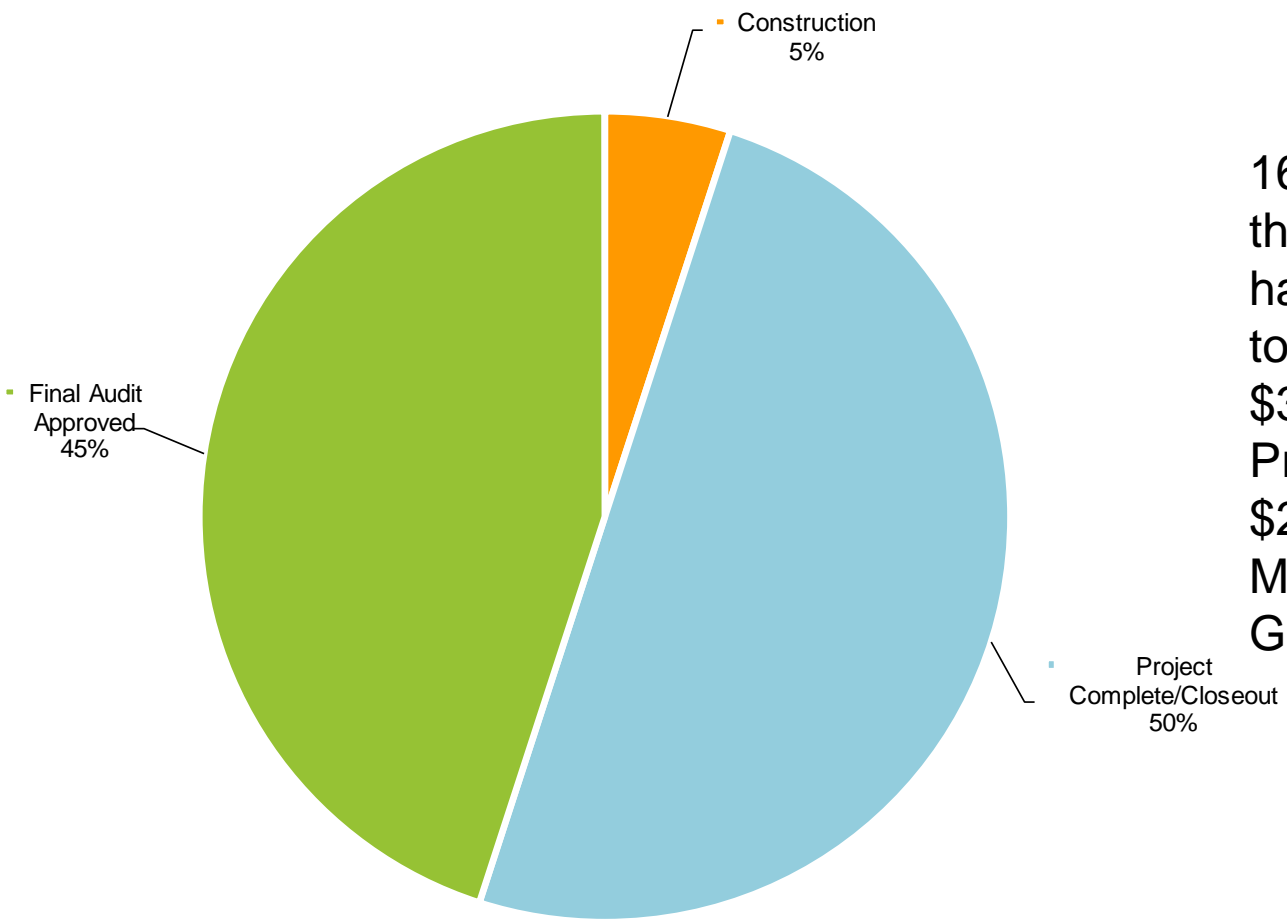
Invitation to Feasibility Study

Vote - Invitation to Feasibility Study

District	School
Worcester	Nelson Place School



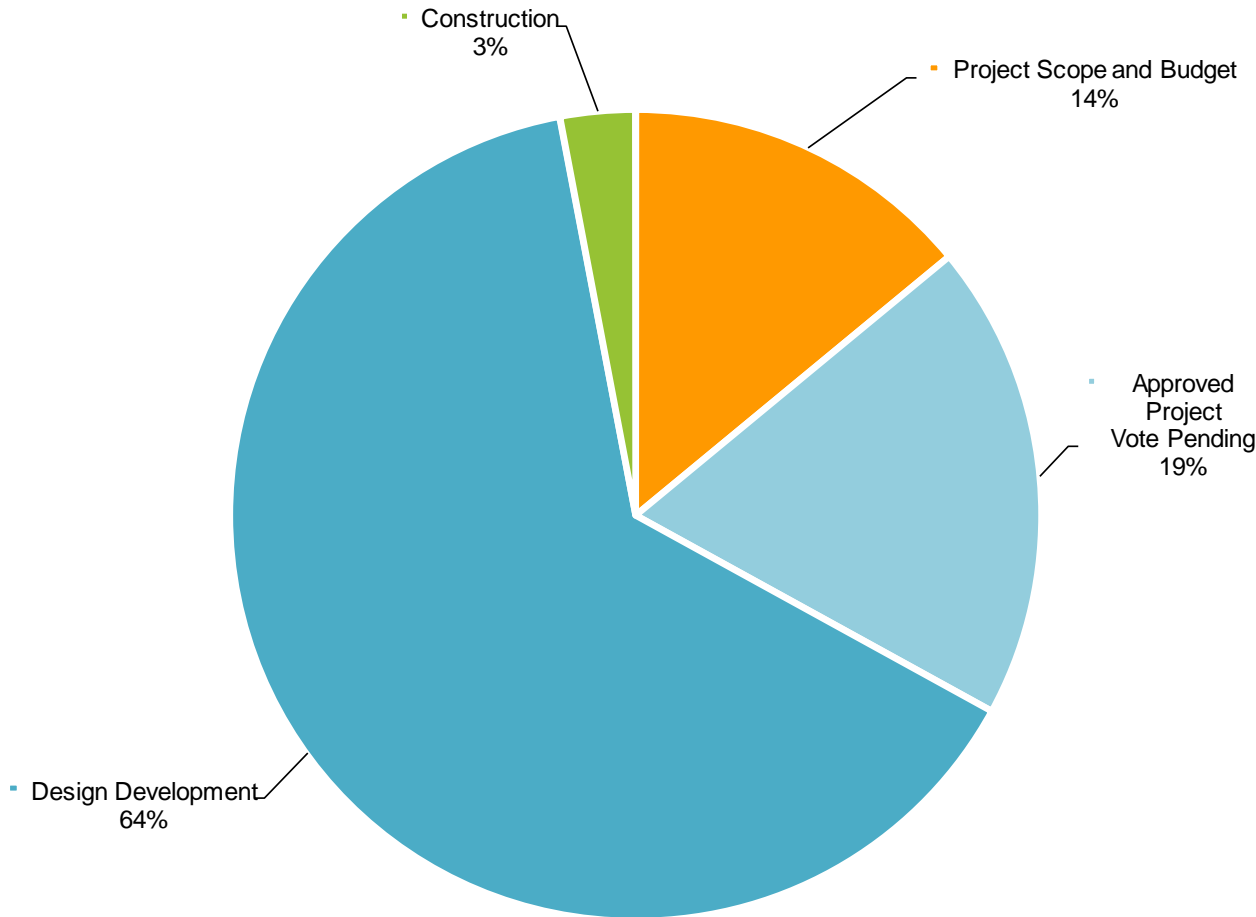
Green Repair Program Status



169 projects participating in the Green Repair Program have received authorization to enter into a PFA, totaling \$366,647,226 in Total Project Costs and \$222,885,258 in MSBA Maximum Total Facilities Grants.



Accelerated Repair Program Status



Currently, there are a total of 24 districts, representing 36 projects, in the Accelerated Repair Program. With today's Board approval, all 36 projects will have been authorized to enter into a PFA, totaling \$63,009,653 in Total Project Costs and a maximum of \$38,267,952 in MSBA Total Facilities Grant funding.



Accelerated Repair Program: Roofs, Windows, & Boilers

Statements of Interest
reviewed between
January and March 2012

January - March 2012
REVIEWED

72

(anticipated bids)

8 Boiler bids
estimated at
\$3,465,902

INVITED

March - June 2012

Projects
invited
to participate
in the
Accelerated
Repair
Program

20 Roof bids
estimated at
\$36,343,810

Accelerated
Repair
Program

11 Window bids
estimated at
\$13,462,009

36

APPROVED

October 2012 - April 2013

Projects **authorized** to
execute a
Project Funding Agreement
by April 3, 2013

Note: 39 bids based on separate scope
items on a total of 36 projects

District

SOI

GRANT



Authorization to Execute Project Funding Agreement – Accelerated Repair Program

Vote - Authorization to Execute Project Funding Agreement, Accelerated Repair Program
- Estimated Maximum Total Facilities Grant of \$4,257,688

District	School	Project Scope	Total Project Budget	Estimated Maximum Total Facilities Grant
Bridgewater-Raynham Regional School District	Bridgewater Middle School	Roof	\$3,550,711	\$1,795,576
	LaLiberte Elementary School	Roof	\$1,461,769	\$739,194
	L.B. Merrill School	Roof	\$1,416,066	\$715,995
Canton	Lt. Peter M. Hansen Elementary School	Window	\$1,023,295	\$438,418
	William H. Galvin Middle School	Window	\$1,331,271	\$568,505
Totals			\$8,783,112	\$4,257,688



Preferred Schematic

Vote - Recommendation for Preferred Schematic Design

District	School	Project Scope	Preliminary Design Pricing - Estimated Total Construction Cost	Estimated Total Project Costs
Athol-Royalston Regional School District	Riverbend Elementary School	New	\$34,085,000	\$42,606,250
Lynn	Thurgood Marshall Middle School	New	\$64,076,373	\$83,358,654
Newton	A.E. Angier Elementary School	New	\$29,250,000	\$36,562,500
Winchester	Winchester High School	Add/Reno	\$103,055,938	\$127,183,847
Winthrop	Winthrop High School	New	\$69,105,031	\$82,926,037
Totals			\$299,572,342	\$372,637,288



Preferred Schematic | Athol-Royalston Regional School District

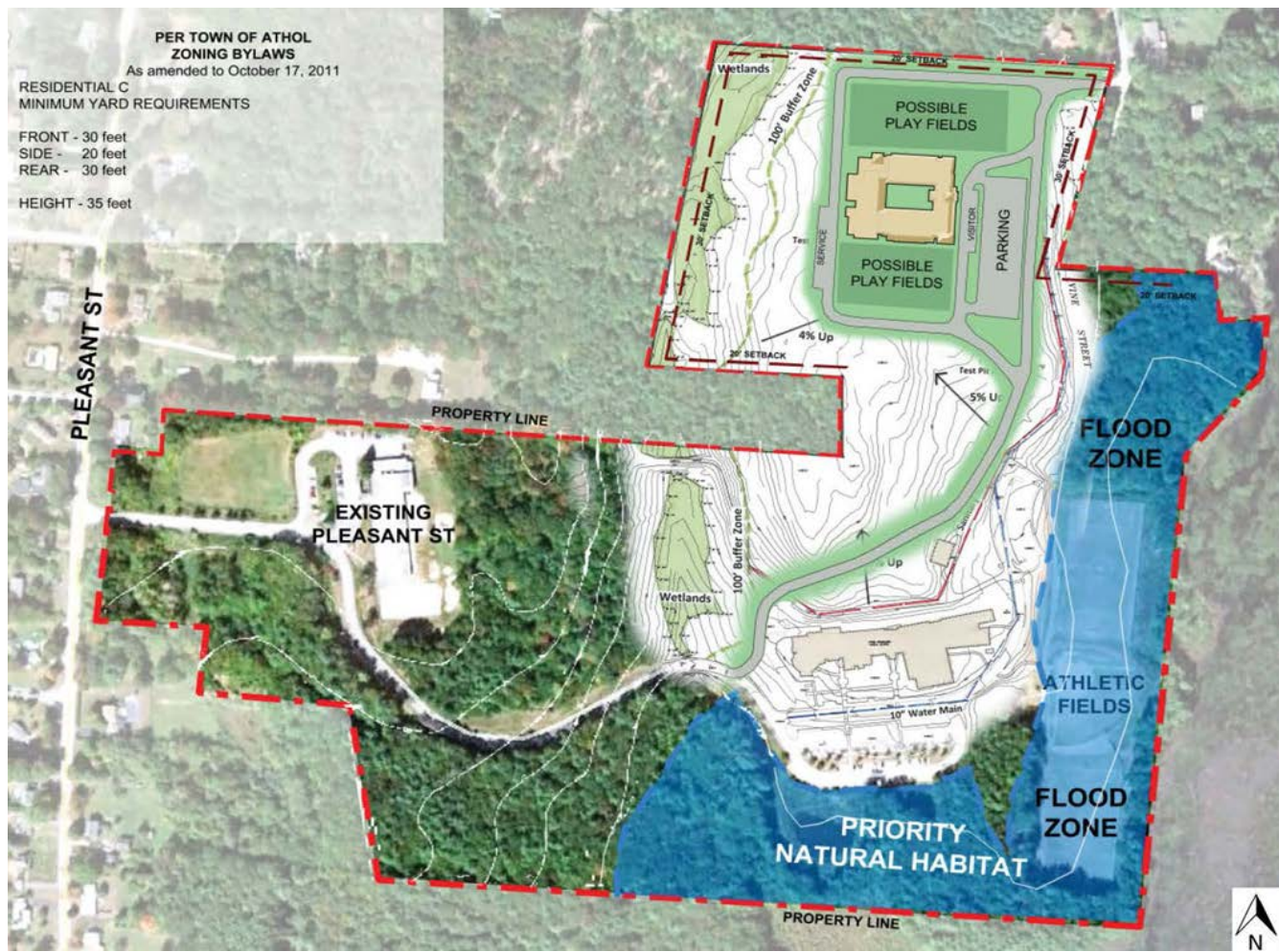
Riverbend Elementary School

- Built in 1907
- Grades: K-4
- Agreed Upon Enrollment: 545
- Proposed Scope of Project: New construction at Campus site
 - Consolidating Riverbend, Sanders, and Pleasant St. Schools
- Existing Square Footage: 36,080
- Proposed Square Footage: 95,726
- Estimated Construction Cost of Preferred Schematic: \$34,085,000



Preferred Schematic | Athol-Royalston Regional School District

Riverbend Elementary School





Preferred Schematic | Lynn

Thurgood Marshall Middle School

- Built in 1923
- Grades: 6-8
- Agreed Upon Enrollment: 1,100
- Proposed Scope of Project: New construction on alternative site
- Existing Square Footage: 150,466
- Proposed Square Footage: 181,847
- Estimated Construction Cost of Preferred Schematic: \$64,076,373



Preferred Schematic | Newton

A.E. Angier Elementary School

- Built in 1919
- Grades: K-5
- Agreed Upon Enrollment: 465
- Proposed Scope of Project: New construction on existing site
- Existing Square Footage: 52,940
- Proposed Square Footage: 75,000
- Estimated Construction Cost of Preferred Schematic: \$29,250,000



Preferred Schematic | Newton

A.E. Angier Elementary School





Preferred Schematic | Winchester

Winchester High School

- Built in 1971
- Grades: 9-12
- Agreed Upon Enrollment: 1,370
- Proposed Scope of Project: Addition and renovation to the existing High School
- Existing High School Square Footage: 280,327
- Proposed Renovated Square Footage: 260,025
 - Proposed Square Footage of Addition: 18,900
- Proposed Abandoned Square Footage: 20,302
- Estimated Construction Cost of Preferred Schematic: \$103,055,938



Preferred Schematic | Winchester

Winchester High School





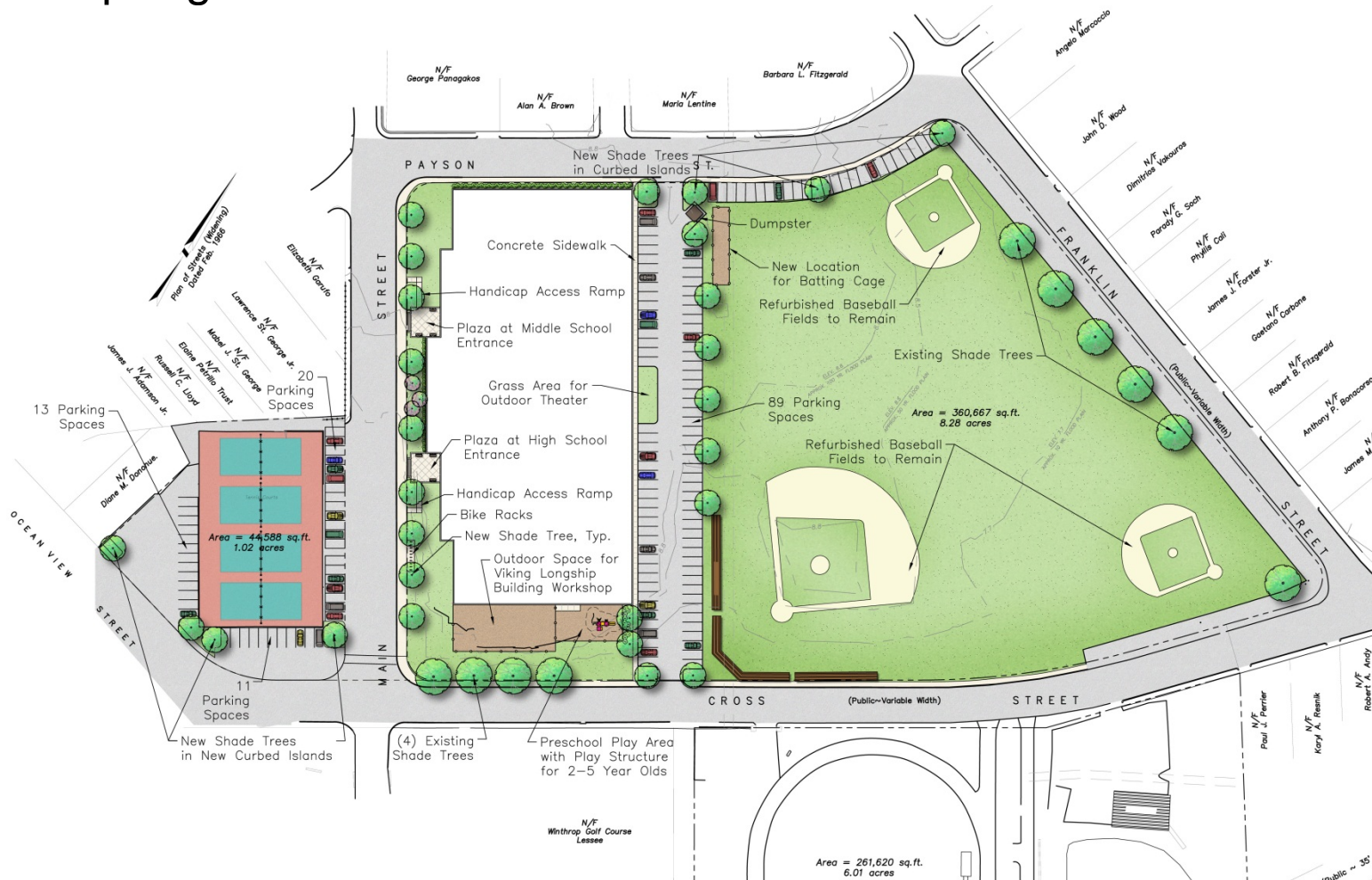
Preferred Schematic | Winthrop

Winthrop High School

- Built in 1965
- Grades: 9-12
- Agreed Upon Enrollment: 970 (6-12)
- Proposed Scope of Project: New construction on existing High School site
- Existing High School Square Footage: 115,153
- Existing Middle School Square Footage: 92,170
- Proposed Square Footage: 184,000
- Estimated Construction Cost of Preferred Schematic: \$69,105,031

Preferred Schematic | Winthrop

Winthrop High School





Project Scope and Budget

Vote - Invitation to Project Scope and Budget - Estimated Maximum Facilities Grant of \$115,021,836

District	School	Project Scope	Total Project Budget	Estimated Maximum Total Facilities Grant
Auburn	Auburn Middle School	New	\$44,511,234	\$19,763,951
Chicopee	Chicopee Academy	Renovation	\$37,999,940	\$28,500,581
Peabody	J. Henry Higgins Middle School	New	\$92,598,279	\$41,311,831
Wachusett Regional School District	Mountview Middle School	New	\$54,301,695	\$25,445,463
Totals			\$229,411,148	\$115,021,826

*See district specific slides for conditional reimbursement rate incentive point information



Project Scope and Budget | Auburn

Auburn Middle School

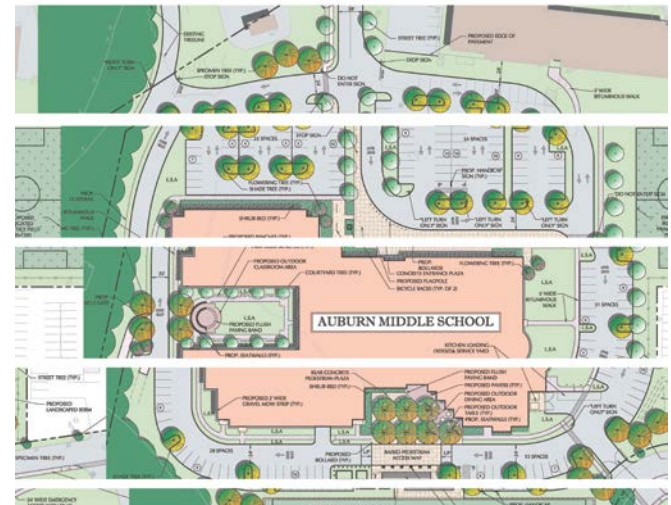
- Built in 1959
- Grades: 6-8
- Agreed Upon Enrollment: 560
- Scope of Project: New construction on an alternative site
- Existing Square Footage: 91,137
- Proposed Square Footage: 100,395
- District Total Project Budget: \$44,511,234
- Estimated Basis of Total Facilities Grant: \$33,721,125
- Reimbursement Rate: 58.61%
- Estimated Maximum Total Facilities Grant: \$19,763,951
- Town Meeting: May 7, 2013
- Debt Exclusion Vote: May 21, 2013

*The MSBA has provisionally included two (2) incentive points for energy efficiency, subject to the District meeting certain sustainability requirements for the project. If the District does not meet the requirements for energy efficiency, the District will not qualify for these incentive points, and the MSBA will adjust the reimbursement rate accordingly.



Project Scope and Budget | Auburn

Auburn Middle School





Project Scope and Budget | Chicopee

Chicopee Academy

- Built in 1920
- Grades: 6-12
- Agreed Upon Enrollment: 825
- Scope of Project: Renovation at existing Chicopee Academy
- Proposed Square Footage: 176,425
- District Total Project Budget: \$37,999,940
- Estimated Basis of Total Facilities Grant: \$35,625,727
- Reimbursement Rate: 80.00%*
- Estimated Maximum Total Facilities Grant: \$28,500,581
- Vote Date To Be Determined

*The Total Reimbursement Rate is subject to the 80.00% statutory maximum reimbursement rate established pursuant to G.L. c. 70B, § 10. The Maximum Reimbursement Rate includes the District's base reimbursement rate of 78.95% plus 1.05 incentive reimbursement points that have been applied to the District's Base Rate from the total of 9.4 incentive reimbursement points, some of which have been provisionally assigned.



Project Scope and Budget | Chicopee

Chicopee Academy





Project Scope and Budget | Peabody

J. Henry Higgins Middle School

- Built in 1966
- Grades: 6-8
- Agreed Upon Enrollment: 1,340
- Scope of Project: New construction on the existing site
- Proposed Total Square Footage: 221,518
 - Proposed Eligible Square Footage: 211,982
- District Total Project Budget: \$92,598,279
- Estimated Basis of Total Facilities Grant: \$73,560,953
- Reimbursement Rate: 56.16%*
- Estimated Maximum Total Facilities Grant: \$41,311,831
- City Council Vote To Be Determined

*The MSBA has provisionally included two (2) incentive points for energy efficiency, subject to the District meeting certain sustainability requirements for the project. If the District does not meet the requirements for energy efficiency, the District will not qualify for these incentive points, and the MSBA will adjust the reimbursement rate accordingly.



Project Scope and Budget | Peabody

J. Henry Higgins Middle School





Project Scope and Budget |

Wachusett Regional
School District

Mountview Middle School

- Built in 1967
- Grades: 6-8
- Agreed Upon Enrollment: 800
- Scope of Project: New construction on the existing site
- Proposed Square Footage: 126,200
- District Total Project Budget: \$54,301,695
- Estimated Basis of Total Facilities Grant: \$43,924,501
- Reimbursement Rate: 57.93%*
- Estimated Maximum Total Facilities Grant: \$25,445,463
- Special Town Meeting: April 8, 2013
- Debt Exclusion Vote: April 11, 2013

*The MSBA has provisionally included two (2) incentive points for energy efficiency, subject to the District meeting certain sustainability requirements for the project. If the District does not meet the requirements for energy efficiency, the District will not qualify for these incentive points, and the MSBA will adjust the reimbursement rate accordingly.



Project Scope and Budget |

Wachusett Regional
School District

Mountview Middle School





Summary of Bid Data

Year	Number of Projects	Design Basis for Enrollment	Project Budget	Construction Budget
2009	11	8,188	\$205.6 M	\$171.5 M
2010	33	26,184	\$1.37 B	\$1.07 B
2011	20	16,113	\$896.6 M	\$688.6 M
2012	25	21,157	\$1.28 B	\$979.2 M
*2013	32	24,093	\$1.21 B	\$972.0 M
2014	2	2,260	\$94 M	\$74.8 M
Grand Total	123	97,995	\$5.06 B	\$3.96 B

Note: These numbers are based on preliminary information received from the District and are subject to further review and calculation

* These numbers include Core Program and SLI projects not Accelerated Repair Projects

- Anticipated Bids in 2013:
 - April – North Attleboro (SLI), North Reading, Newburyport (Nock), Greenfield
 - May – Wakefield, Old Colony Regional Voc/Tech, Southwick-Tolland-Granville (Powder Mill & Woodland)



Core Program

Construction Estimate vs. 2013 Bid Amount

- 4 bids received & 1 GMP executed in 2013
- Of the 5 bids, 4 are within the district's estimated budget.

District	School	Scope	Project Type	Bid Date	Construction Estimate **	Bid Amount **	Variance from Construction Estimate	Reimbursement Rate	Potential Grant Variance *
				Total	\$175,533,418	\$161,893,505	\$13,639,913	-	\$8,090,109
Lexington	Estabrook ES	New	CMR	Jan-13	\$31,145,045	\$32,792,348	-\$1,647,303	37.27%	\$0
Monomoy Regional School	Monomoy Regional HS	New	DBB	Feb-13	\$52,962,105	\$47,490,700	\$5,471,405	51.53%	\$2,819,415
Newburyport	Bresnhan ES	New	DBB	Feb-13	\$31,117,441	\$27,405,000	\$3,712,441	52.78%	\$1,959,426
Williamsburg	Anne T. Dunphy IS	Add/Reno	DBB	Mar-13	\$9,553,527	\$8,990,457	\$563,070	61.86%	\$348,315
Assabet Valley RVTSD	Assabet Valley RVTHS	Repair/Reno	DBB	Mar-13	\$50,755,300	\$45,215,000	\$5,540,300	53.48%	\$2,962,952

*These numbers are based on preliminary information received from the district and are subject to further review and calculation.

**The construction estimate and bid amount do not include pre-construction services and alternatives.



Science Lab Initiative

Construction Estimate vs. 2013 Bid Amount

- Of the 8 projects; 6 bids received and 1 project North Attleborough HS is re-bidding in April.
- Of the 6 bids, 5 are within the district's estimated budget.

District	School	Scope	Project Type	Bid Date	Construction Estimate **	Bid Amount **	Variance from Construction Estimate	Reimbursement Rate	Potential Grant Variance *
				Total	\$15,091,979	\$11,468,316	\$3,623,663	-	\$2,284,134
Melrose	Melrose HS	SLI	DBB	Feb-13	\$4,938,311	\$3,239,000	\$1,699,311	50.79%	\$863,080
Gardner	Gardner HS	SLI/Windows	DBB	Feb-13	\$2,934,333	\$2,745,319	\$189,014	78.95%	\$149,227
Blackstone Valley RSD	Blackstone Valley RHS	SLI	DBB	Feb-13	\$625,395	\$553,997	\$71,398	53.53%	\$38,219
Holyoke RSD	William Dean VTHS	SLI	DBB	Mar-13	\$5,352,000	\$4,022,000	\$1,330,000	80.00%	\$1,064,000
Tri-County RVSD	Tri-County RVTHS	SLI	DBB	Mar-13	\$1,241,940	\$908,000	\$333,940	50.79%	\$169,608

*These numbers are based on preliminary information received from the district and are subject to further review and calculation.

**The construction estimate and bid amount do not include pre-construction services and alternatives.



Accelerated Repair Project Construction Estimate vs. 2013 Bid Amount

- Out of 39 projects, 36 expected to bid in 2013.
- Of the 36, 17 bids have been received and 8 are still being evaluated.
- Of the 9 bids, 7 are within the district's estimated budget.

District	School	Scope	Project Type	Bid Date	Construction Estimate **	Bid Amount **	Variance from Construction Estimate	Reimbursement Rate	Potential Grant Variance *
				Total	\$7,029,168	\$5,992,654	\$1,036,514	-	\$534,948
Weymouth	Willian Seach ES	Boiler	DBB	Dec-12	\$446,847	\$459,104	-\$12,257	54.16%	\$0
Granton-Dunstable	Granton-Dunstable MS	Roof	DBB	Feb-13	\$1,316,890	\$942,000	\$374,890	45.74%	\$171,475
Hamilton-Wenham	Cutler ES	Roof	DBB	Feb-13	\$547,326	\$444,150	\$103,176	43.42%	\$44,799
N. Brookfield	N. Brookfield ES	Windows	DBB	Feb-13	\$274,254	\$199,400	\$74,854	62.67%	\$46,911
Shawsheen Valley VTSD	Shawsheen Valley VTHS	Boiler	DBB	Mar-13	\$805,423	\$535,000	\$270,423	52.06%	\$140,782
Sudbury	Gen. John Nixon ES	Roof	DBB	Mar-13	\$621,554	\$538,000	\$83,554	36.89%	\$30,823
Easton	Easton Jr. HS	Roof	DBB	Mar-13	\$1,850,830	\$1,889,000	-\$38,170	50.16%	\$0
Norton	Solmonese ES	Roof	DBB	Mar-13	\$1,166,044	\$986,000	\$180,044	55.63%	\$100,158

*These numbers are based on preliminary information received from the district and are subject to further review and calculation.

**The construction estimate and bid amount do not include pre-construction services and alternatives.



Construction Costs - New

Projects within District's estimate:

Construction Costs	2010 to 2011	2012	2013
New Construction SD	\$270 - \$353	\$259 - \$302	\$276 - \$315
New Construction Bid	\$240 - \$316 (26)	\$243 - \$297 (11)	\$244 - \$282 (2)

Projects over District's estimate:

Construction Costs	2010 to 2011	2012	2013
New Construction SD	N/A	\$255 - \$367	\$339
New Construction Bid	N/A	\$263 - \$372 (4)	\$357 (1)



Construction Costs - Addition/Renovation

Projects within District's estimate:

Construction Costs	2010 to 2011	2012	2013
Add/Reno Construction SD	\$86 - \$277	\$86 - \$301	\$134 - \$252
Add/Reno Construction Bid	\$89 - \$220 (17)	\$85 - \$274 (8)	\$120 - \$242 (2)

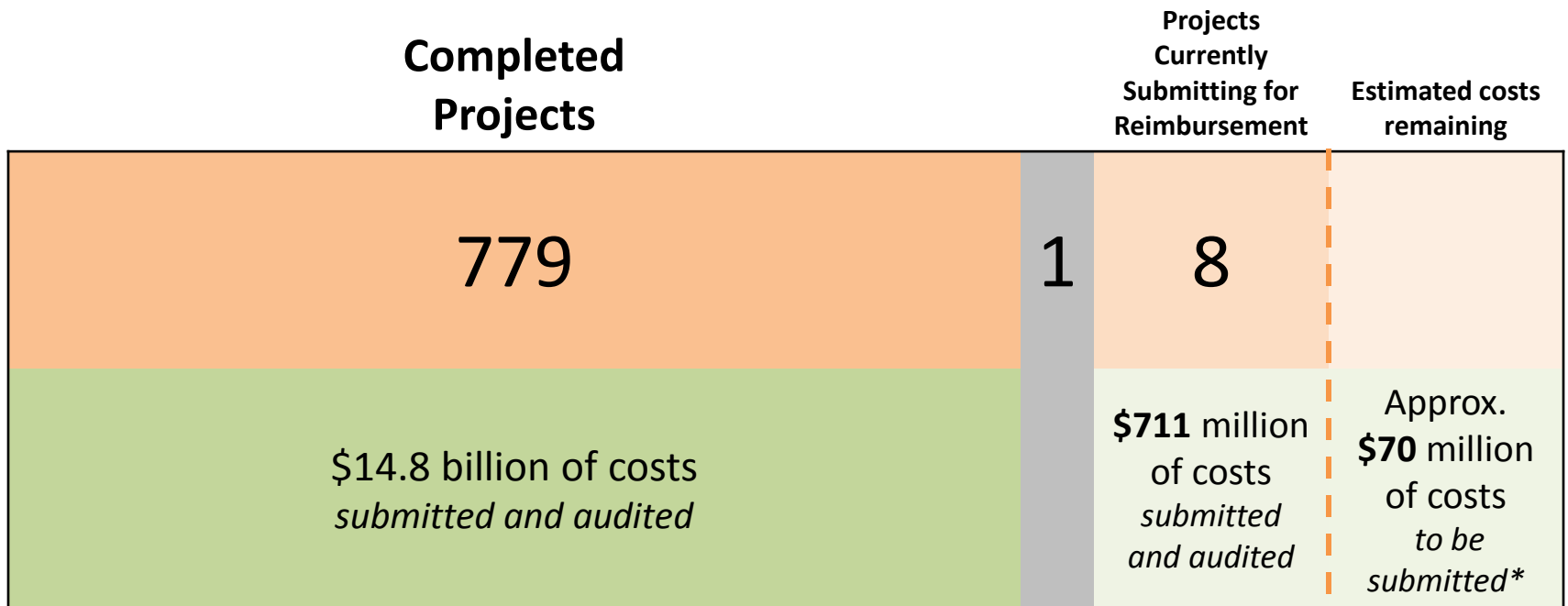
Projects over District's estimate:

Construction Costs	2010 to 2011	2012	2013
Add/Reno Construction SD	N/A	\$227 \$262	N/A
Add/Reno Construction Bid	N/A	\$269 \$280 (2)	N/A

Audit Status Update

Former Program

Today's Vote



→ \$1.4 billion in audit savings to date

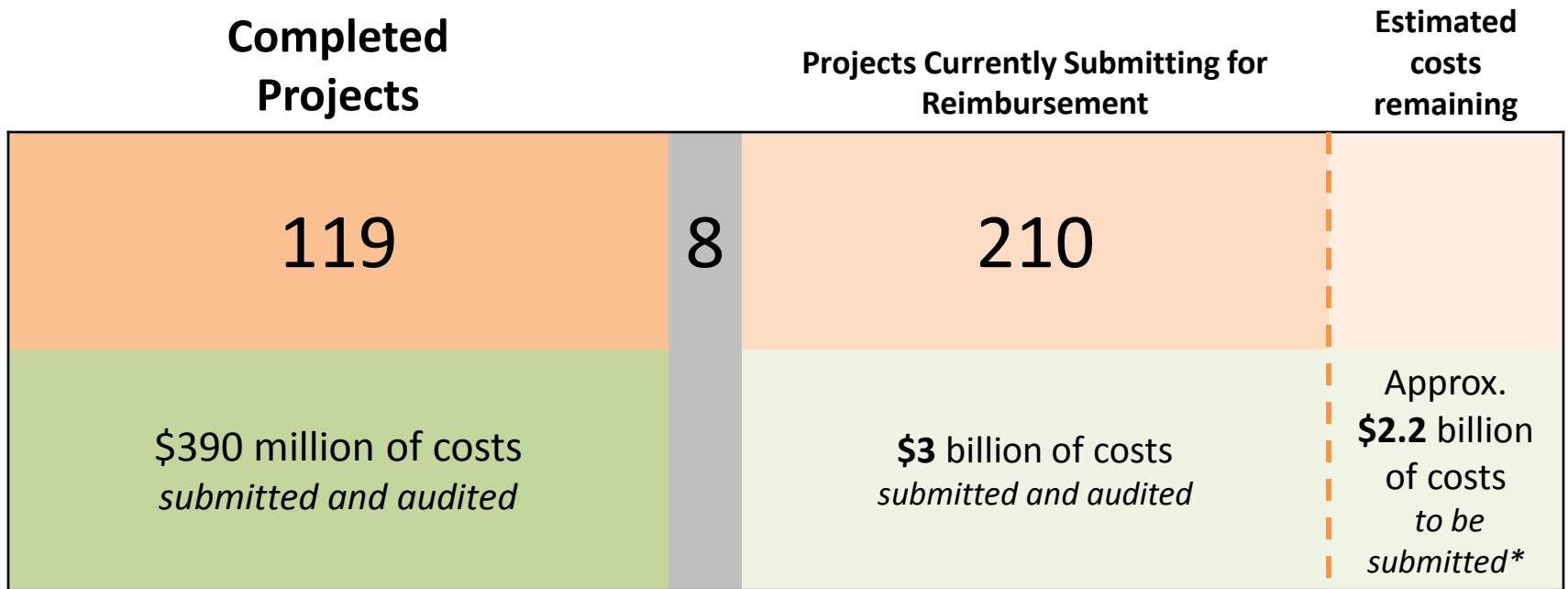
→ \$1.4 billion in estimated grant payments remaining

*estimated based on Total Project Budget and submitted costs to date

Audit Status Update

New Program

■ **Today's Vote**



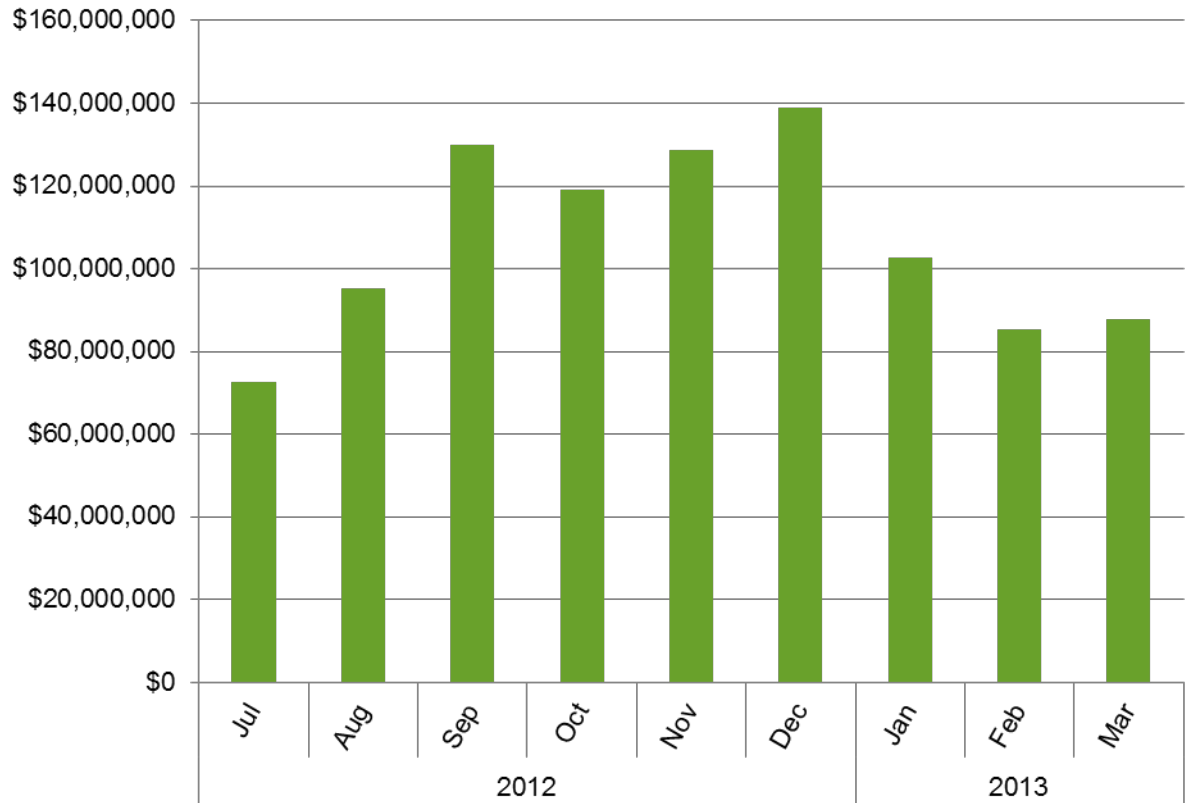
**estimated based on Total Project Budget and submitted costs to date*



FY13 New Program Audited Costs

- Year-to-date monthly submitted costs average of \$106.7 million in FY 2013
- Year-to-date monthly payments have averaged more than \$45 million in FY13

FY2013 New Program Audited Submitted Costs \$960M





Closeout Audit – Former Program

Today's Vote: Exhibit A, Approval of Final Audit

District	School Name	Reimb. Rate	Estimated Budget	Final Construction Costs Submitted	Audited Eligible Project Costs	Final Total Facilities Grant
Malden	Malden High School	90.00%	\$77,033,447	\$ 77,466,743	\$75,609,642	\$ 68,237,339
			\$77,033,447	\$ 77,466,743	\$75,609,642	\$ 68,237,339



Closeout Audits - New Program

Today's Vote: Exhibit D, Approval of Final Audits

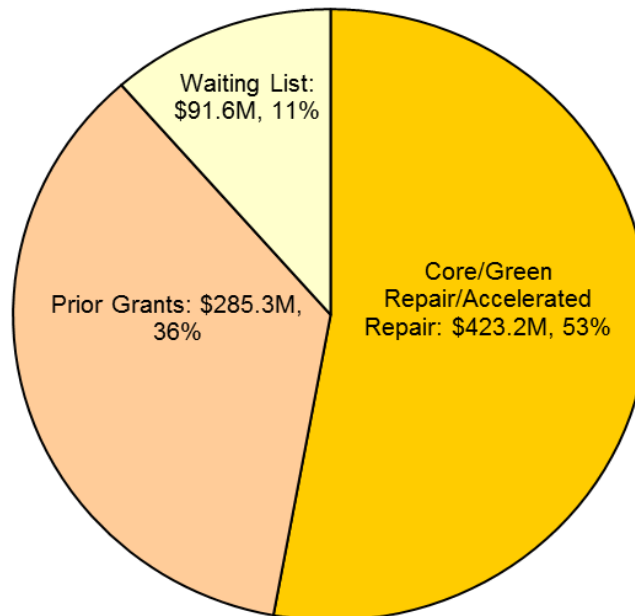
District	School Name	MSBA Cx	Reimb. Rate	Estimated Budget	Final Costs Submitted	Basis for Final Total Facilities Grant	Final Total Facilities Grant
Abington	Woodsdale Elementary School	X	54.79%	\$1,223,299	\$965,747	\$922,225	\$505,288
Amherst-Pelham RSD	Amherst Regional Middle School	X	59.84%	\$1,356,420	\$1,379,845	\$1,255,084	\$751,042
Billerica	Billerica Memorial High School	X	52.69%	\$582,692	\$544,481	\$544,444	\$286,868
Central Berkshire RSD	Craneville Elementary School	X	56.26%	\$1,045,405	\$1,029,270	\$1,029,253	\$579,058
Dartmouth	James M. Quinn Elementary School	X	47.64%	\$1,069,384	\$975,836	\$965,613	\$460,018
Framingham	Mary E. Stapleton Elementary School	X	57.69%	\$954,075	\$937,748	\$937,748	\$540,987
Marshfield	Gov. Winslow Elementary School	X	46.37%	\$2,137,791	\$2,059,623	\$1,999,877	\$927,343
South Shore RSD	South Shore Vocational Technical High School	X	52.06%	\$2,927,908	\$2,665,575	\$2,520,684	\$1,312,268
				\$11,296,974	\$10,558,125	\$10,174,928	\$5,362,871



More than \$800 million grants paid to date in FY13 towards 614 projects in 229 districts

<i>FY13 Year-to-Date*</i>			
Program	Grant Payments (\$)	# Projects	# Districts
Core/Green Repair/Accelerated Repair	423,171,099	245	143
Prior Grants	285,329,113	327	149
Waiting List	91,632,681	42	29
Total	800,132,893	614	229

FY13 MSBA Grant Payments to Date



* Reflects grant payments as of March 19, 2013.



FY13 YTD Monthly SMART Collections

Month	Jul	Aug	Sep	Oct	Nov	Dec	Jan	Feb	YTD
FY12 Collections (\$ 000)	59,646	54,111	52,414	56,434	52,892	57,303	67,440	49,632	449,873
FY13 Collections (\$ 000)	60,514	56,214	53,253	57,667	54,031	55,053	67,562	51,348	455,642
Change (\$ 000)	868	2,103	839	1,232	1,138	(2,250)	122	1,716	5,769
% Change	1.5%	3.9%	1.6%	2.2%	2.2%	-3.9%	0.2%	3.5%	1.3%

- SMART collections through February were \$5.8M (1.3%) greater than collections through same period in FY12
- Except for December, SMART collections in FY13 have exhibited growth each month over the same month in the previous year

