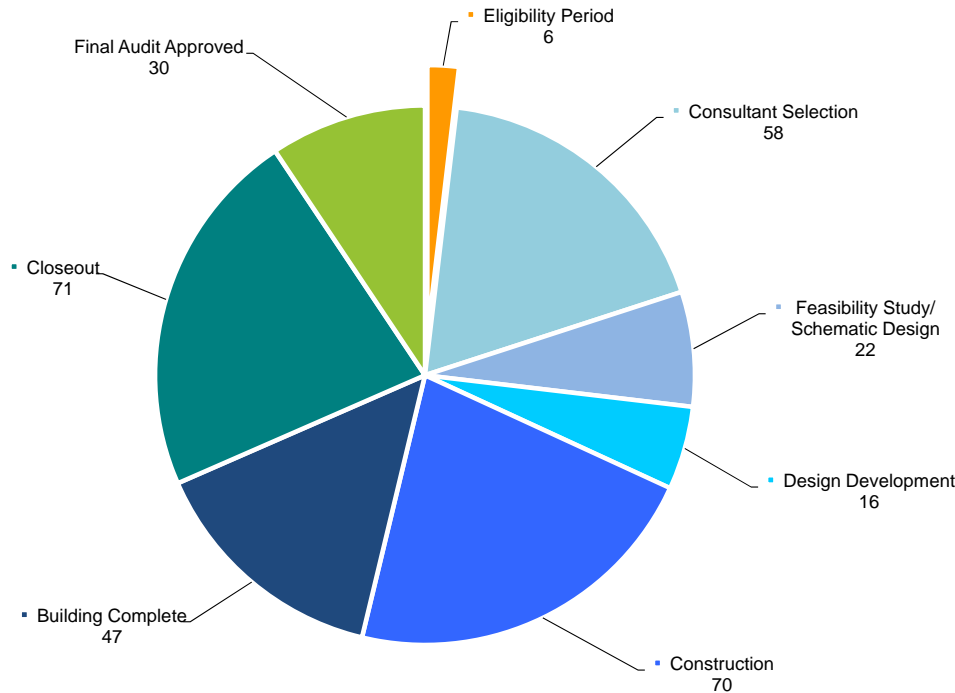


# Project Overview Report

## October 29, 2014

A total of 320 projects that have received invitations from the Board of Directors (“Board”) to collaborate with the MSBA are currently in the MSBA’s Eligibility Period and Capital Pipeline. The following summary chart provides the number of projects in the Eligibility Period and each phase of the Capital Pipeline:



### Statement of Interest (“SOI”)

#### **2014 SOI Process**

The Fiscal Year 2014 SOI filing period opened on January 10, 2014. The deadline to file SOIs for consideration in the Accelerated Repair Program (“ARP”) was Friday, February 14, 2014. The MSBA received 119 SOIs, submitted by 60 districts for consideration in the ARP. Invites into the ARP were concluded at the June 4, 2014 Board of Directors Meeting and 37 districts, representing 51 projects, were invited into the Program.

The SOI closing date for districts submitting for consideration in the Core Program, which is primarily for projects beyond the scope of Accelerated Repair, including extensive repairs, renovations, addition/renovations, and new school construction, was April 11, 2014. The MSBA received 108 Core Program SOIs. The review process for these SOIs will continue into the fall of 2014. The MSBA anticipates invites into the Eligibility Period at the Board of Directors meetings in early 2015.

## **Eligibility Period**

There are six districts in the Eligibility Period. Of the six, two districts have already secured funding. The remaining four districts have yet to confirm their date for action.

An agreed-upon enrollment is a key pre-requisite for the MSBA to commence a Feasibility Study with a district. To begin the enrollment projection process, a district must file enrollment information utilizing the MSBA's online enrollment projection tool. Since the last report, three districts have completed the enrollment process.

Based upon the schedules anticipated by the districts for completion of the Eligibility Period requirements, staff anticipates recommending the six districts in the Eligibility Period for an Invitation to Feasibility Study at upcoming Board meetings.

## **Capital Pipeline**

### **Consultant Selection**

After the district has completed all Eligibility Period requirements and has received a Board Invitation to Feasibility Study, the district procures an Owner's Project Manager ("OPM"). There are currently eight districts in the Capital Pipeline that need to procure an OPM.

After a district has selected and executed a contract with an OPM, it selects a Designer utilizing either a local designer selection process for projects under \$5 million or the MSBA's Designer Selection Panel ("DSP") for projects over \$5 million. There are currently three districts in the Capital Pipeline that are in the process of procuring a Designer.

### **Feasibility Study**

Once a district has procured an OPM and Designer and a Feasibility Study Agreement has been executed, the district and its consultants must complete two Feasibility Study submittals, the Preliminary Design Program and the Preferred Schematic Report, prior to Board consideration to proceed into Schematic Design. Based on the most recent data and schedules provided to the MSBA by districts, the MSBA anticipates that four districts will present their preferred schematic designs to the Board at the upcoming January and March Board meetings.

Prior to consideration by the Board for Project Scope and Budget authorization, a district must submit a Schematic Design to the MSBA for review. Based on the most recent data and schedules provided to the MSBA by districts, the MSBA anticipates that five districts will appear before the Board for Project Scope and Budget Agreement authorization at the upcoming January and March Board meetings.

## Commissioning

Since the last report, the MSBA has assigned Commissioning Consultants to one additional project presented in the table below. To date, the MSBA has executed 281 Commissioning Consultant contracts, totaling \$21.1 million. To date, 124 contracts have been completed.

District	School	Estimated Const. Cost (million)	Commissioning Consultant	Contract Amount
Boston	Dearborn STEM Academy	\$60.20	Symmes, Maini & McKee Associates	\$96,227
<b>Total</b>		<b>\$60.20 M</b>	<b>Total \$96,227</b>	

The table below represents the status of commissioning assignments sorted by the fiscal year in which the commissioning work orders were issued.

Fiscal Year	No. Work Orders Issued	Value of Work Orders Issued	Total Invoiced	Percent Complete
FY10	31	\$4,231,376	\$4,261,828	100%
FY11	95	\$6,328,287	\$5,793,260	92%
FY12	52	\$4,459,061	\$3,570,243	80%
FY13	55	\$3,386,847	\$1,938,724	57%
FY14	47	\$2,604,062	\$742,300	29%
FY15	2	\$282,288	\$0	0%

## Design Development

Once a district has secured local funding and has entered into a Project Funding Agreement with the MSBA, it enters into the Design Development phase. Currently, there are 16 projects in the Design Development phase with a total estimated construction cost of approximately \$466.6 million: six Accelerated Repair projects and 10 Core Program projects. The 10 Core Program projects in Design Development have a total estimated construction cost of approximately \$456.3 million and are listed below.

### Elementary School Districts

Athol-Royalston Regional  
Milford  
Newton  
Northborough

### Middle and Middle/High School Districts

Georgetown  
Haverhill

### High School Districts

Boston  
Lunenburg  
North Middlesex Regional  
Plymouth

## Construction

When a district issues a Notice to Proceed, the project is advanced to the Construction phase. Currently, there are 70 projects in the Construction phase with a total estimated construction cost of \$1.54 billion: 35 Accelerated Repair projects, one Science Lab Initiative project, one Waitlist project, and 33 Core Program projects. The 33 Core Program projects have a total estimated construction cost of \$1.47 billion and are listed below. This does not include the 47 projects that have reached substantial completion and are currently in the Building Complete phase.

### Elementary School Districts

Georgetown  
Gloucester  
Revere  
Springfield (*Brookings*)  
South Hadley  
Southwick-Tolland-Granville  
Regional (*Woodland*)  
Webster  
Westfield

### Middle and Middle/High School Districts

Auburn  
Chicopee  
Greenfield  
Lynn  
North Adams  
Peabody  
Southwick-Tolland-Granville  
Regional (*Powder Mill*)  
Stoneham  
Sutton  
Wachusett Regional  
Wakefield

### High School Districts

**Addition/Renovation**  
Assabet Valley Regional Technical  
Ayer Shirley Regional  
Greater Lawrence Regional Voc/Tech  
Greater Lowell Regional Voc/Tech  
Greater New Bedford Voc/Tech  
North Reading  
Southern Worcester Regional Voc/Tech  
Southwick-Tolland-Granville Regional  
Winchester

**New**  
Concord-Carlisle Regional  
Essex/North Shore Regional Voc/Tech  
West Bridgewater  
Wilmington  
Winthrop

## Summary of Bid Data

These numbers are based on preliminary information received from the district and are subject to further review and calculation.

Year	Number of Projects	Design Basis for Enrollment	Project Budget	Construction Budget
2014	17	14,345	\$935.0 M	\$731.9 M
2015	9	7,650	\$644.7 M	\$505.8 M
<b>Grand Total</b>	<b>26</b>	<b>21,995</b>	<b>\$1.58 B</b>	<b>\$1.24 B</b>

## Core Program – Total Project Budget Update

Upon receiving the Board’s approval of the Project Scope and Budget, the MSBA and participating districts enter into a Project Funding Agreement that establishes the Total Project Budget and the Estimated Maximum Total Facilities Grant for an approved project. Of the grants authorized by the Board, seven projects have increased their Total Project Budgets due to acceptance of construction bids higher than the project estimates, and one project has increased its Total Project Budget due to an increase in its site acquisition cost budget. In no event has the increase in budget resulted in an increase to the Estimated Maximum Total Facilities Grant as authorized by the Board. Please note that staff reported on these budget increases for the seven projects shaded below at previous Board meetings.

District	School Name	Scope	Project Funding Agreement		PFA Bid Amendment / Final Audit		Reason for Increase to Total Project Budget
			Total Project Budget	Total Maximum Facilities Grant	Total Project Budget	Total Maximum Facilities Grant	
<b>Core Program</b>							
Andover	Bancroft Elementary School	New	\$44,659,837	\$16,773,753	\$50,374,837	TBD*	The District has appropriated additional funds to cover the costs associated with increased construction costs and additional contingencies for litigation/settlement costs and other ineligible costs.
Burlington	Burlington Marshall Simonds MS	Add/ Reno	\$32,865,272	\$17,143,365	\$34,221,929	\$15,362,127	The District appropriated at its May 2012 annual town meeting through Articles 18: 19, additional funds for the costs associated with the construction of the new field complex and field lighting replacement.
Essex North Shore Agricultural & Technical High School	Essex North Shore Agricultural & Technical School District	New	\$125,000,000	\$77,500,000	\$133,770,000	\$77,500,000	The Board was informed at the March 30, 2011 meeting that the Total Project Budget had increased due to additional ineligible scope that would be funded by DCAM.
Essex North Shore Agricultural & Technical High School	Essex North Shore Agricultural & Technical School District	New	\$125,000,000	\$77,500,000	\$134,501,368	\$77,500,000	The District has appropriated additional funds to cover the costs associated with increased construction costs for horse tack barn renovations.
Lexington	Estabrook Elementary School	New	\$40,792,248	\$12,250,739	\$43,392,248	\$12,148,491	The District has executed a GMP that exceeds the Construction Budget of the PFA. The District has appropriated additional funds to cover the costs associated with increased construction costs and additional contingencies.
North Reading	North Reading Middle /High School	Add/ Reno	\$107,727,074	\$49,323,123	\$123,227,074	\$49,323,123	This is a CMR project. The estimated, reconciled construction costs tracked over budget at DD (\$9,746,655 over), 60% (\$4,655,965 over), and 90% (\$15,136,846 over). A Town override vote in March 2013 obtained an additional \$15,500,000 in local funding to proceed.
Revere	Staff Sergeant James J. Hill Elementary School (currently the McKinley ES)	New	\$45,402,396	\$29,551,048	TBD*	\$29,551,048	At Project Scope and Budget, the Total Project Budget was approved at \$44,382,396. The City of Revere has increased the land acquisition budget. Therefore, the projected total project budget at PFA has increased to \$45,402,396. Note that the MSBA grant has not changed since the Project Scope and Budget Agreement.
Somerville	East Somerville Community School	Add/ Reno	\$33,185,258	\$15,237,996	\$38,006,621	\$15,237,996	At the March 28, 2012 Board Meeting, the Board approved an amendment to the PFA and a \$6.25M District loan.
Uxbridge	Uxbridge High School	New	\$43,000,000	\$22,362,328	\$44,986,479	\$22,362,328	The District has appropriated additional funds to cover the costs associated with the construction of athletic fields originally included in the PFA but which were not included in the bid as the District's construction contract would have exceeded the budget.

\*PFA Bid Amendment has not been developed to calculate a revised total facilities grant amount. The Total Maximum Facilities Grant will not exceed the Board authorized amount in the PFA but, upon review, may decrease.

## Status of Accelerated Repair Program

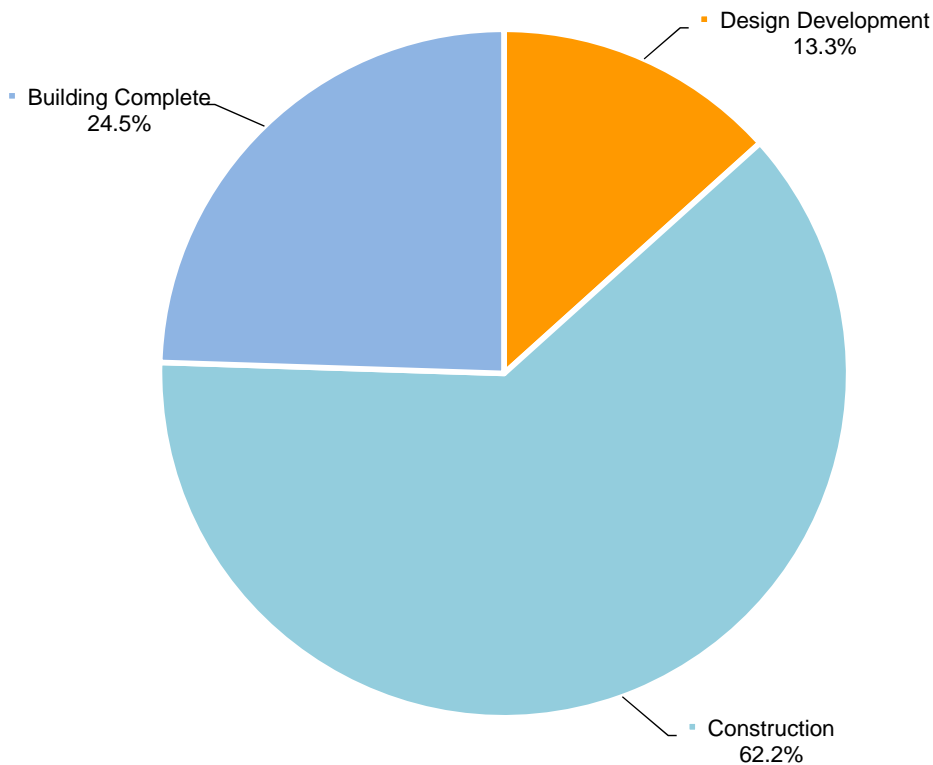
Currently there are a total of 70 districts, representing 131 projects, either active or completed in the Accelerated Repair Program.

### **2014 Accelerated Repair Program**

Following a review of 2014 Accelerated Repair Statements of Interest, 36 districts, representing 51 projects, were invited into the Program at the June 2014 Board Meeting. One district authorized a Declaration of Removal of a Statement of Interest for one of its projects. The 36 districts, representing 50 projects, continue to complete the Schematic Design phase following the execution of contracts with their assigned consultants. Eight districts, representing 13 projects, are seeking approval for Project Funding Agreements at the November Board Meeting.

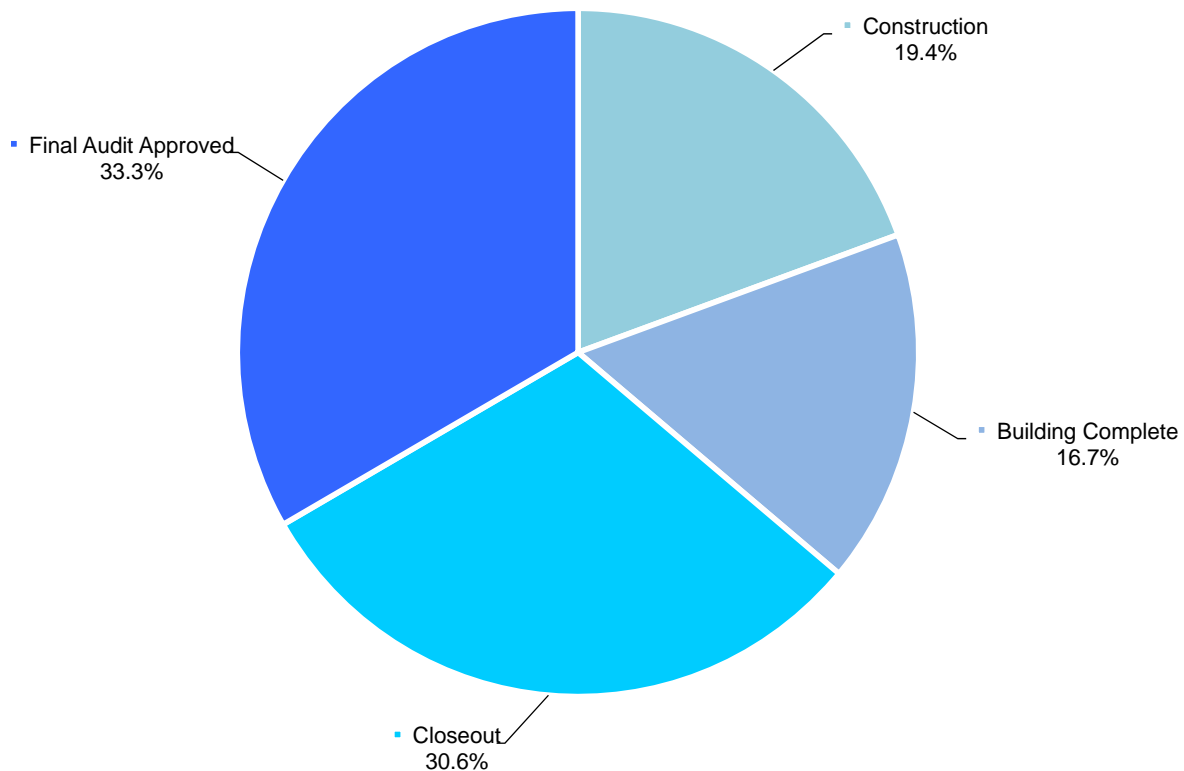
### **2013 Accelerated Repair Program**

Currently 26 districts, representing 47 projects, have been approved for Project Funding Agreements in the Accelerated Repair Program. Two districts authorized Declarations of Removal of a Statement of Interest and removed their potential projects from the Program. One of the two districts remains in the 2013 Accelerated Repair Program with additional projects. The 2013 Accelerated Repair Program is proceeding with 25 districts, representing 45 projects authorized for \$94,650,790 in Total Project Budgets, and a maximum of \$54,662,550 in MSBA Total Facilities Grant Funding. Since the last report, the number of projects that have reached building completion has increased to 24.5%.



## 2012 Accelerated Repair Program

All 24 districts, representing 36 projects, approved for the Accelerated Repair Program in 2012 have been authorized to enter into a Project Funding Agreement, totaling \$63,009,653 in Total Project Costs and a maximum of \$38,267,952 in MSBA Total Facilities Grant funding. Of the 36 projects, 27 completed construction in 2013. Of the nine projects scheduled for construction completion in 2014, two are substantially complete. The chart below represents the progress of the 36 projects approved in 2012. Since the last report, the number of projects that have completed final audit has risen from 19.4% to 33.3%.



## Status of Green Repair Program

The Green Repair Program has resulted in PFA authorizations totaling \$366,647,226 in Total Project Costs and \$222,885,258 in MSBA grants. Of the 189 projects, 163 have been approved for final grant payments. All projects that have not been previously approved for final grant payments are substantially complete.

## 2012 Accelerated Repair Projects – Construction Estimate vs. 2013 Bid Amount

The 2012 Accelerated Repair Projects have completed the bid phase. Of the 36 projects, 29 bids came within their estimated budget. In total, \$8,099,015 in potential grant savings was realized. The grant savings stem from a difference of \$12,750,211 between the construction estimates and the bid amounts.

				Total	\$51,494,496	\$38,744,285	\$12,750,211		\$8,099,015
District	School	Scope	Project Type	Bid Date	Construction Estimate**	Bid Amount**	Variance from Construction Estimate	Reimbursement Rate	Potential Grant Variance*
Weymouth	William Seach PS	Boiler	DBB	Dec-12	\$425,213	\$459,104	-\$33,891	54.16%	\$0
Groton-Dunstable RSD	Groton-Dunstable MS	Roof	DBB	Feb-13	\$1,316,890	\$942,000	\$374,890	45.74%	\$171,475
Hamilton-Wenham RSD	Cutler ES	Roof	DBB	Feb-13	\$547,326	\$444,150	\$103,176	43.42%	\$44,799
North Brookfield	North Brookfield ES	Windows	DBB	Feb-13	\$274,254	\$199,400	\$74,854	62.67%	\$46,911
Shawsheen Valley Voc/Tech	Shawsheen Valley VTHS	Boiler	DBB	Mar-13	\$805,423	\$535,000	\$270,423	52.06%	\$140,782
Sudbury	Gen. John Nixon ES	Roof	DBB	Mar-13	\$621,554	\$542,775	\$78,779	36.89%	\$29,062
Easton	Easton Jr. HS	Roof	DBB	Mar-13	\$1,850,830	\$1,889,000	-\$38,170	50.16%	\$0
Norton	Solmonese ES	Roof	DBB	Mar-13	\$1,166,044	\$986,000	\$180,044	55.63%	\$100,158
Attleborough	Irvin Studley ES	Roof	DBB	Mar-13	\$773,363	\$489,000	\$284,363	57.74%	\$164,191
Lynn	Breed MS	Windows	DBB	Mar-13	\$1,796,674	\$2,167,300	-\$370,626	80.00%	\$0
Lynn	Lynn Voc/Tech	Roof	DBB	Mar-13	\$4,173,000	\$3,097,000	\$1,076,000	80.00%	\$860,800
Worcester	Chandler Magnet	Windows	DBB	Mar-13	\$3,723,463	\$3,142,320	\$581,143	80.00%	\$464,914
Worcester	Jacob Hiatt Magnet	Boiler	DBB	Mar-13	\$298,877	\$321,703	-\$22,826	80.00%	\$0
Worcester	James Caradonio Center	Windows / Boiler	DBB	Mar-13	\$1,021,820	\$1,007,132	\$14,688	80.00%	\$11,750
Worcester	Lake View School	Windows	DBB	Mar-13	\$1,127,970	\$789,398	\$338,572	80.00%	\$270,858
Worcester	May Street School	Windows	DBB	Mar-13	\$1,655,289	\$1,548,167	\$107,122	80.00%	\$85,698
Gardner	Gardner MS	Boiler	DBB	Apr-13	\$438,439	\$396,100	\$42,339	78.95%	\$33,427
North Attleborough	Roosevelt Ave. ES	Windows	DBB	Apr-13	\$768,000	\$656,483	\$111,517	52.06%	\$58,056
Quabaog RSD	Warren ES	Boiler	DBB	Apr-13	\$207,000	\$182,444	\$24,556	68.34%	\$16,782
Quabbin	Ruggles Lane ES	Roof / Windows	DBB	Apr-13	\$2,588,409	\$2,287,836	\$300,573	57.74%	\$173,551
Leominster	Fall Brook ES	Boiler	DBB	Apr-13	\$949,550	\$684,000	\$265,550	73.38%	\$194,861
Leominster	Southeast ES	Roof / Boiler	DBB	Apr-13	\$3,146,097	\$1,948,000	\$1,198,097	73.38%	\$879,164
Westfield	Munger Hill ES	Roof	DBB	Apr-13	\$1,170,735	\$593,499	\$577,236	59.84%	\$345,418
Westfield	Paper Mill ES	Roof	DBB	Apr-13	\$1,170,735	\$562,525	\$608,210	59.84%	\$363,953
Southampton	William Norris ES	Roof	DBB	May-13	\$1,504,147	\$922,000	\$582,147	55.00%	\$320,181
Taunton	Galligan School	Roof	DBB	May-13	\$543,570	\$486,600	\$56,970	73.95%	\$42,129
Wayland	Wayland MS	Roof	DBB	May-13	\$2,445,767	\$1,965,800	\$479,967	36.89%	\$177,060
Blackstone-Millville RSD	Maloney ES	Roof	DBB	Sep-13	\$1,405,656	\$702,000	\$703,656	57.74%	\$406,291
Blackstone-Millville RSD	J. F. Kennedy ES	Roof	DBB	Sep-13	\$2,315,707	\$1,093,000	\$1,222,707	57.74%	\$705,991
Wilmington	North IS	Windows	DBB	Nov-13	\$1,206,312	\$1,217,649	-\$11,337	49.94%	\$0
Canton	Peter Hans on School	Windows	DBB	Dec-13	\$734,414	\$660,200	\$74,214	45.11%	\$33,478
Canton	William Galvin MS	Windows	DBB	Dec-13	\$1,014,385	\$856,600	\$157,785	45.11%	\$71,177
Bridgewater-Raynham RSD	Bridgewater MS	Roof	DBB	Mar-14	\$2,788,716	\$1,482,000	\$1,306,716	55.63%	\$726,926
Bridgewater-Raynham RSD	Laliberte ES	Roof	DBB	Mar-14	\$1,151,769	\$766,100	\$385,669	55.63%	\$214,548
Bridgewater-Raynham RSD	L. B. Merill ES	Roof	DBB	Mar-14	\$1,110,066	\$861,100	\$248,966	55.63%	\$138,500
Blackstone-Millville RSD	Blackstone-Millville RHS	Roof	DBB	Apr-14	\$3,257,032	\$1,860,900	\$1,396,132	57.74%	\$806,127

\*These numbers are based on preliminary information received from the district and are subject to further review and calculation.

\*\*The construction estimate and bid amount do not include pre-construction services and alternatives.



## 2013 Accelerated Repair Projects – Construction Estimate vs. 2014 Bid Amount

- Out of 45 projects, 44 bids have been received
- Of the 44 projects, 38 bids have been reported
- Of the 38 projects, 34 bids came within the estimated budget

District	School	Scope	Project Type	Bid Date	Construction Estimate **	Bid Amount **	Variance from Construction Estimate	Reimbursement Rate	Potential Grant Variance *
				Total	\$64,756,974	\$43,948,227	\$20,809,747	-	\$13,074,083
Springfield	High School / Science Tech	Roof	DBB	Mar-14	\$2,856,796	\$2,145,000	\$711,796	80.00%	\$569,437
Springfield	Margaret C. Ells	Roof	DBB	Mar-14	\$1,333,530	\$911,000	\$422,530	80.00%	\$338,024
Springfield	South End MS	Roof	DBB	Mar-14	\$564,152	\$292,000	\$272,152	80.00%	\$217,722
Springfield	Springfield Public Day HS	Roof	DBB	Mar-14	\$676,093	\$575,000	\$101,093	80.00%	\$80,874
Hopedale	Memorial ES	Roof	DBB	Apr-14	\$406,219	\$258,000	\$148,219	52.89%	\$78,393
Hamilton-Wenham RSD	Bessie Buker ES	Boiler	DBB	Apr-14	\$610,530	\$419,910	\$190,620	44.05%	\$83,968
South Middlesex RVTSD	Joseph P. Keefe RTHS	Roof	DBB	Apr-14	\$5,130,738	\$3,218,000	\$1,912,738	69.89%	\$1,336,813
Randolph	Randolph Community MS	Boiler	DBB	Apr-14	\$384,601	\$259,590	\$125,011	74.74%	\$93,433
Randolph	Randolph HS	Roof	DBB	Apr-14	\$1,206,462	\$739,000	\$467,462	74.74%	\$349,381
Westhampton	Westhampton ES	Roof / Windows	DBB	Apr-14	\$817,213	\$275,131	\$542,082	50.58%	\$274,185
Nashoba Valley RVTSD	Nashoba Valley THS	Roof	DBB	May-14	\$2,421,424	\$1,265,000	\$1,156,424	52.26%	\$604,347
Easton	Moreau Hall ES	Roof	DBB	May-14	\$690,007	\$658,000	\$32,007	50.79%	\$16,256
Ashland	Ashland MS	Roof	DBB	May-14	\$2,900,968	\$1,584,000	\$1,316,968	50.16%	\$660,591
Ashland	Henry E. Warren ES	Roof	DBB	May-14	\$2,074,007	\$977,000	\$1,097,007	50.16%	\$550,259
Medford	Medford HS	Boiler	DBB	May-14	\$1,894,490	\$1,481,000	\$413,490	55.58%	\$229,818
Walpole	Fisher	Roof	DBB	May-14	\$1,554,441	\$998,459	\$555,982	48.68%	\$270,652
Springfield	Chestnut Accel. MS	Roof	DBB	Jun-14	\$3,720,576	\$1,360,000	\$2,360,576	80.00%	\$1,888,461
Stoughton	West ES	Roof	DBB	Jun-14	\$1,008,661	\$498,000	\$510,661	54.16%	\$276,574
Worcester	Tatnuck	Windows	DBB	Mar-14	\$1,731,847	\$1,543,300	\$188,547	78.95%	\$148,858
Worcester	Worcester Arts Magnet School	Windows	DBB	Mar-14	\$1,311,076	\$1,509,330	-\$198,254	78.95%	\$0
Worcester	Worcester East MS	Boiler	DBB	Apr-14	\$2,178,604	\$1,235,829	\$942,775	78.95%	\$744,321
Worcester	Columbus Park	Windows / Boiler	DBB	Apr-14	\$1,608,897	\$2,011,029	-\$401,132	78.95%	\$0
Pembroke	Hobomock ES	Roof	DBB	Apr-14	\$2,290,036	\$1,547,055	\$742,981	52.06%	\$386,796
Pembroke	North Pembroke ES	Roof	DBB	Apr-14	\$3,073,954	\$2,367,109	\$706,845	52.06%	\$367,984
Pembroke	Pembroke Community MS	Roof	DBB	Apr-14	\$1,971,662	\$1,913,425	\$58,237	52.06%	\$30,318
Pembroke	Pembroke HS	Roof	DBB	Apr-14	\$2,950,556	\$2,250,945	\$699,611	52.06%	\$364,217
Hatfield	Smith Academy	Roof / Windows	DBB	May-14	\$1,798,916	\$975,191	\$823,725	50.58%	\$416,640
Nauset	Nauset Regional MS	Roof	DBB	May-14	\$2,082,235	\$1,138,000	\$944,235	37.32%	\$352,389
Wellfleet	Wellfleet ES	Roof	DBB	May-14	\$336,394	\$272,474	\$63,920	37.95%	\$24,258
Barnstable	Barnstable Horace Mann Charter School	Roof	DBB	Jun-14	\$938,416	\$967,200	-\$28,784	38.74%	\$0
Dighton-Rehoboth	Dighton ES	Roof	DBB	Jul-14	\$2,018,029	\$1,686,100	\$331,929	52.06%	\$172,802
Dighton-Rehoboth	Dighton MS	Roof	DBB	Jul-14	\$1,178,690	\$1,233,350	-\$54,660	52.06%	\$0
Dighton-Rehoboth	Dorothy L. Bechwith	Roof	DBB	Jul-14	\$2,303,887	\$1,261,800	\$1,042,087	52.06%	\$542,510
Blackstone-Millville	Millville ES	Roof	DBB	Jul-14	\$1,265,494	\$1,000,000	\$265,494	57.74%	\$153,296
Stoughton	Helen Hanson ES	Windows	DBB	Jul-14	\$856,110	\$583,502	\$272,608	54.16%	\$147,644
Stoughton	Joseph R. Dawe Jr ES	Windows	DBB	Jul-14	\$1,082,835	\$744,498	\$338,337	54.16%	\$183,243
Wareham	Wareham Senior HS	Roof	DBB	Aug-14	\$2,256,595	\$869,600	\$1,386,995	68.00%	\$943,157
Pentucket	Pentucket Reg MS	Roof & Boiler	DBB	May-14	\$1,271,833	\$924,400	\$347,433	50.79%	\$176,461

\*These numbers are based on preliminary information received from the district and are subject to further review and calculation.

\*\*The construction estimate and bid amount do not include pre-construction services and alternatives.

## Accelerated Repair Projects – Schedule Extension Update

The MSBA has granted districts conditional extensions to their Project Funding Agreements pending compliance with the following stipulations:

- The district needed to submit a detailed, revised construction timeline showing how the work will be completed at each school; and
- Any costs that may result from the district’s requested extension of the construction schedule will be the sole responsibility of the district and are categorically ineligible for reimbursement by the MSBA.

Schedule delays for these districts can be attributed to local funding issues, lead time for windows, and construction delays on site. In no event have the extended schedules resulted in an increase to the Estimated Maximum Total Facilities Grant as authorized by the Board.

Nine of the 36 2012 Accelerated Repair Projects did not meet their anticipated construction completion dates. Each of these projects developed a revised construction schedule. Five of these projects are substantially complete while four remain in construction.

District	School	Scope	Original Construction Completion Date	Updated Construction Completion Date	Reason for Schedule Extension
Blackstone-Millville RSD	Blackstone-Millville RHS	Roof	26-Dec-13	1-Sep-14	The District fell behind schedule due to local funding issues.
Bridgewater-Raynham RSD	Bridgewater MS	Roof	1-Sep-13	1-Sep-14	The District fell behind schedule due to local funding issues and incorporation of new OPM to project team.
Bridgewater-Raynham RSD	Laliberte ES	Roof	1-Sep-13	1-Sep-14	The District fell behind schedule due to local funding issues and incorporation of new OPM to project team.
Bridgewater-Raynham RSD	L.B. Merrill ES	Roof	1-Sep-13	1-Sep-14	The District fell behind schedule due to local funding issues and incorporation of new OPM to project team.
North Attleborough	Roosevelt Ave. ES	Windows	27-Sep-13	31-Mar-14	Construction fell behind schedule due to material delivery delays. Corrective work was completed to ensure windows pass commissioning tests.
Taunton	Galligan School	Roof	13-Nov-13	31-Dec-13	District issued a Change Order for installation of tapered insulation and membrane overlay to prevent ponding around the chimney area.
Worcester	Lake View School	Windows/Doors	13-Sep-13	14-Feb-14	Construction fell behind schedule due to material delivery delays.
Worcester	May Street School	Windows/Doors	13-Sep-13	15-Mar-14	Construction fell behind schedule due to material delivery delays.
Worcester	New Citizens Center School	Windows/Doors & Boilers	13-Sep-13	14-Feb-14	Construction fell behind schedule due to material delivery delays. Boiler scope completed per baseline schedule.

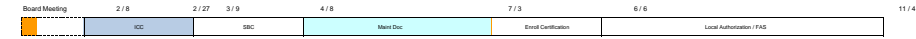
Five of the 45 2013 Accelerated Repair Projects will not meet their anticipated construction completion dates in 2014. The projects have revised construction schedules and are scheduled to be completed by the beginning of the 2015-2016 school year.

District	School	Scope	Original Construction Completion Date	Updated Construction Completion Date	Reason for Schedule Extension
Hamilton-Wenham RSD	Winthrop ES	Windows	15-Sep-14	13-Aug-15	The District and its consultants have determined that the estimated lead time for windows requires construction to be scheduled for 2015.
Pathfinder Voc/Tech	Pathfinder Voc/Tech	Roof	22-Sep-14	28-Aug-15	The District fell behind schedule due to local funding issues.
Quincy	Merrymount ES	Windows	22-Sep-14	28-Aug-15	The District and its consultants have elected to re-bid the project and complete construction in 2015.
Quincy	North Quincy High	Windows	22-Sep-14	28-Aug-15	The District and its consultants have elected to re-bid the project and complete construction in 2015.
Quincy	Wollaston ES	Windows	22-Sep-14	28-Aug-15	The District and its consultants have elected to re-bid the project and complete construction in 2015.

# 2014-2015 Eligibility Period Status

October 29, 2014  
6 Projects in Eligibility Period

Task Remaining    
  Partial Task Completed  
 Invite / Completion Date    
  Completed Task



District	2014												2015			
	Jan	Feb	Mar	April	May	June	July	Aug	Sept	Oct	Nov	Dec	Jan	Feb	Mar	April
Luency Reay E. Sterling Middle School  Somerville Somerville High School  Orange Dexter Park School  Bourne James F. Peables Elementary School  Ipswich Winthrop Elementary School  Millis Clyde F. Brown Elementary School	01/29/14	02/12/14	03/04/14	04/03/14	05/05/14		08/01/14				10/30/14					
		ICC (30 days)	SBC (60 days)	Online Enrollment Projection Info/ Ed Profile Questionnaire (90 days)	Maintenance Docs / Enroll Certification (180 days)		Local Authorization				FSA (270 days)					
		ICC (30 days)	SBC (60 days)	Online Enrollment Projection Info/ Ed Profile Questionnaire (90 days)	Maintenance Docs / Enroll Certification (180 days)		Local Authorization				FSA (270 days)					
			03/26/14	04/09/14	05/09/14	06/09/14	07/08/14		10/06/14			01/05/15				
			ICC (30 days)	SBC (60 days)	Online Enrollment Projection Info/ Ed Profile Questionnaire (90 days)	Maintenance Docs		Enroll Certification (180 days)			Local Authorization / FSA (270 days)					
					06/04/14	06/18/14	07/18/14	08/18/14	09/16/14		12/15/14				03/16/15	
					ICC (30 days)	SBC (60 days)	Online Enrollment Projection Info/ Ed Profile Questionnaire (90 days)	Maintenance Docs / Enroll Certification (180 days)			Local Authorization / FSA (270 days)					
					ICC (30 days)	SBC (60 days)	Online Enrollment Projection Info/ Ed Profile Questionnaire (90 days)	Maintenance Docs / Enroll Certification (180 days)			Local Authorization / FSA (270 days)					
					ICC (30 days)	SBC (60 days)	Online Enrollment Projection Info/ Ed Profile Questionnaire (90 days)	Maintenance Docs / Enroll Certification (180 days)			Local Authorization / FSA (270 days)					
District	Jan	Feb	Mar	April	May	June	July	Aug	Sept	Oct	Nov	Dec	Jan	Feb	Mar	April
	2014												2015			

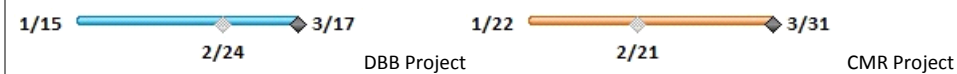
### 2014 ESTIMATED BID DATES

Note bid dates are Estimates ONLY. Please contact Districts for exact information.

Total Project Budget denotes total District costs and does not denote the basis of the MSBA Total Facilities Grant.

District	Enrollment	Project Budget	Start	Finish	Construction Budget	Notes	2014											
							Dec '13	Jan '14	Feb '14	Mar '14	Apr '14	May '14	Jun '14	Jul '14	Aug '14	Sep '14	Oct '14	Nov '14
<b>Ayer Shirley RSD</b>	495	\$ 56.5	9/18/13	3/31/14	\$ 44.4	GMP issued: March	ASRSD - Ayer Shirley RHS 3/31											
<b>Revere</b>	690	\$ 44.4	1/1/14	1/23/14	\$ 33.9	NTP issued: March	Revere - Staff Sergeant James J. Hill (McKinley) ES 1/1 1/23											
<b>North Adams</b>	310	\$ 29.7	1/15/14	3/17/14	\$ 21.9	NTP issued: April	North Adams - Silvio O. Conte MS 1/15 3/17											
<b>Greater Lowell RVTSD</b>	1990	\$ 65.3	1/22/14	3/31/14	\$ 53.2	GMP issued: March	Greater Lowell RVTSD - Greater Lowell RVTHS 1/22 2/24 3/31											
<b>Auburn</b>	560	\$ 44.5	2/1/14	6/6/14	\$ 35.5	GMP issued: June	Auburn - Auburn MS 2/1 2/21 4/24 6/6											
<b>Wachusett RSD</b>	800	\$ 54.3	2/21/14	5/15/14	\$ 43.1	NTP issued: May	Wachusett RSD - Mountview MS 2/21 4/10 5/15											
<b>South Hadley</b>	270	\$ 28.2	3/15/14	4/22/14	\$ 21.6	NTP issued: May	South Hadley - Plains ES 3/15 4/22											
<b>Chicopee</b>	850	\$ 38.0	4/1/14	5/14/14	\$ 30.8	NTP issued: May	Chicopee - Chicopee Academy 4/1 4/10 5/14											
<b>Peabody</b>	1340	\$ 92.6	4/8/14	6/17/14	\$ 75.1	NTP issued: June	Peabody - Higgins MS 4/8 4/23 6/17											
<b>Greater Lawrence RVTSD</b>	1400	\$ 5.2	4/8/14	5/29/14	\$ 4.4	NTP issued: June	Greater Lawrence RVTSD - Greater Lawrence RVTHS 4/8 6/5 5/29											
<b>Lynn</b>	1100	\$ 92.0	8/23/14	11/14/14	\$ 67.7	GMP targeted: November	Lynn - Thurgood Marshall MS 8/23 9/18 11/14											
<b>Newton</b>	465	\$ 37.5	9/8/14	11/21/14	\$ 26.2	GMP targeted: November	Newton - Angier ES 9/8 10/6 11/21											
<b>Lunenburg</b>	820	\$ 72.9	9/15/14	11/25/14	\$ 59.6	GMP targeted: November	Lunenburg - Lunenburg MS/HS 9/15 10/20 11/25											
<b>Winchester</b>	1370	\$ 129.9	9/26/14	11/12/14	\$ 100.9	GMP targeted: November	Winchester - Winchester HS 9/26 10/22 11/12											
<b>Athol-Royalston RSD</b>	545	\$ 43.9	10/13/14	11/10/14	\$ 35.2	NTP targeted: November	Athol-Royalston RSD - Riverbend ES 10/13 10/27 11/10											
<b>Gloucester</b>	355	\$ 39.6	10/20/14	12/11/14	\$ 30.0	GMP targeted: December	Gloucester - West Parish ES 10/20 11/20 12/11											
<b>Milford</b>	985	\$ 60.9	11/3/14	1/15/15	\$ 48.4	GMP targeted: January	Milford - Woodland ES 11/3											
<b>Total</b>	<b>14,345</b>	<b>\$ 935.4</b>			<b>\$ 731.9</b>													

Note: Budget values are in millions.  
The project start date represents the Filed-Sub bid solicitation date, gray diamond Filed-Sub bid date, and the black diamond GC Bids / GMP Execution.



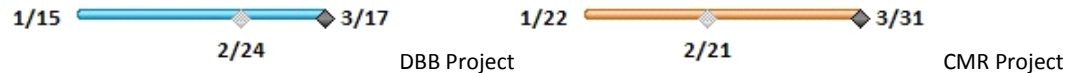
**2015 ESTIMATED BID DATES**

Note bid dates are Estimates ONLY. Please contact Districts for exact information.

Total Project Budget denotes total District costs and does not denote the basis of the MSBA Total Facilities Grant.

District	Enrollment	Project Budget	Start	Finish	Construction Budget	Notes	Predecessors	Resource Names	Jan '15	Feb '15	Mar '15	Apr '15	May '15	Jun '15	Jul '15	Aug '15	Sep '15	Oct '15	Nov '15	Dec '15
									Gantt Chart											
Winthrop	970	\$ 80.2	2/4/15	4/16/15	\$ 61.9	GMP targeted: April			Winthrop - Winthrop MS/HS 2/4 (DBB Project) — 3/11 (Filed-Sub Bid) — 4/16 (GMP Execution)											
Northborough	270	\$ 25.5	2/9/15	4/1/15	\$ 18.2	NTP targeted: April			Northborough - Lincoln Street ES 2/9 (DBB Project) — 3/11 (Filed-Sub Bid) — 4/1 (GMP Execution)											
Georgetown	720	\$ 7.8	2/25/15	4/14/15	\$ 5.9	NTP targeted: April			Georgetown - Georgetown MS/HS 2/25 (DBB Project) — 3/25 (Filed-Sub Bid) — 4/14 (GMP Execution)											
North Middlesex RSD	870	\$ 89.0	3/16/15	5/14/15	\$ 68.8	NTP targeted: May			North Middlesex RSD - North Middlesex RHS 3/16 (DBB Project) — 4/30 (Filed-Sub Bid) — 5/14 (GMP Execution)											
Boston	600	\$ 73.5	4/14/15	6/3/15	\$ 60.2	GMP targeted: June			Boston - Henry Dearborn MS 4/14 (DBB Project) — 5/20 (Filed-Sub Bid) — 6/3 (GMP Execution)											
Haverhill	1005	\$ 61.5	4/14/15	5/18/15	\$ 50.0	GMP targeted: May			Haverhill - Caleb Dustin Hunking MS 4/14 (DBB Project) — 5/11 (Filed-Sub Bid) — 5/18 (GMP Execution)											
Plymouth	1005	\$ 107.8	5/25/15	6/30/15	\$ 83.8	NTP targeted: June			Plymouth - Plymouth South HS 5/25 (DBB Project) — 6/16 (Filed-Sub Bid) — 6/30 (GMP Execution)											
Holbrook	1095	\$ 103.0	9/29/15	11/23/15	\$ 79.8	GMP targeted: November			Holbrook - Holbrook Junior-Senior HS 9/29 (DBB Project) — 11/9 (Filed-Sub Bid) — 11/23 (GMP Execution)											
Abington	1115	\$ 96.4	10/13/15	12/11/15	\$ 77.2	NTP targeted: December			Abington - Frolio Jr/ High 10/13 (DBB Project) — 11/9 (Filed-Sub Bid) — 12/11 (GMP Execution)											
<b>Total</b>	<b>7650</b>	<b>\$ 644.7</b>			<b>\$ 505.8</b>															

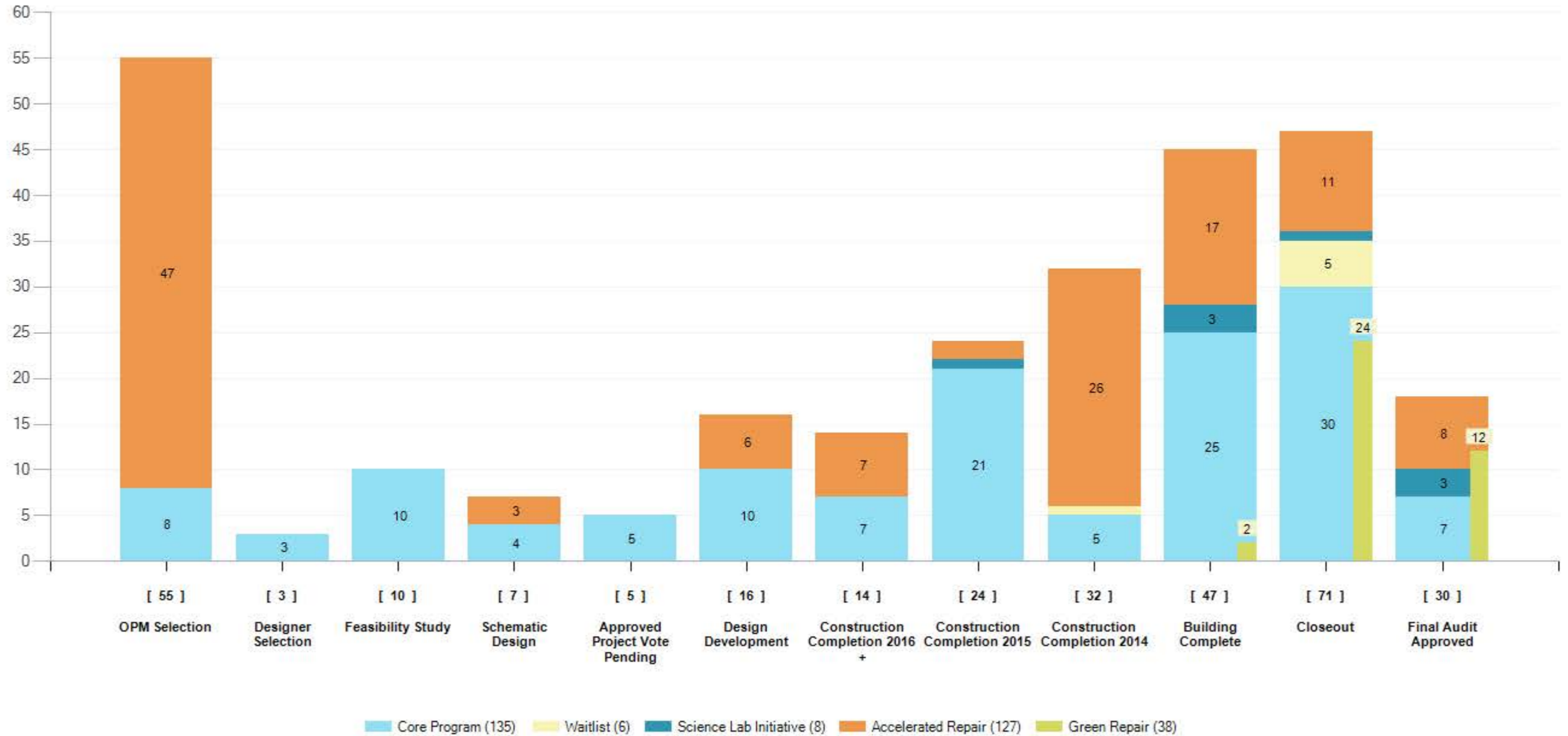
Note: Budget values are in millions.  
 The project start date represents the Filed-Sub bid solicitation date, gray diamond Filed-Sub bid date, and the black diamond GC Bids / GMP Execution.



# PROJECT STATUS

Total Number of Projects: 314

Wednesday, October 29, 2014



Number less than 3 is not shown in the chart

# PROJECT INDEX

Wednesday, October 29, 2014

## OPM Selection

Auburn	Auburn Middle	OPM Selection	Accelerated Repair
Auburn	Bryn Mawr	OPM Selection	Accelerated Repair
Bellingham	South Elem	OPM Selection	Accelerated Repair
Brockton	Ashfield Middle School	OPM Selection	Accelerated Repair
Brockton	Barrett Russell School	OPM Selection	Accelerated Repair
Brockton	Brookfield	OPM Selection	Accelerated Repair
Brockton	Gilmore	OPM Selection	Accelerated Repair
Dartmouth	George H Potter	OPM Selection	Accelerated Repair
Falmouth	Lawrence	OPM Selection	Accelerated Repair
Franklin County	Franklin County Tech	OPM Selection	Accelerated Repair
Gardner	Elm Street School	OPM Selection	Accelerated Repair
Gill-Montague	Sheffield Elementary	OPM Selection	Accelerated Repair
Greenfield	Green River	OPM Selection	Accelerated Repair
Hampden-Wilbraham	Soule Road	OPM Selection	Accelerated Repair
Hampden-Wilbraham	Wilbraham Middle	OPM Selection	Accelerated Repair
Holyoke	E N White Elem	OPM Selection	Accelerated Repair
Holyoke	Morgan Elem	OPM Selection	Accelerated Repair
Hudson	Mulready Elementary	OPM Selection	Accelerated Repair
Leominster	Northwest	OPM Selection	Accelerated Repair
Lynn	E J Harrington	OPM Selection	Accelerated Repair
Lynn	Wm P Connery	OPM Selection	Accelerated Repair
Medfield	Ralph Wheelock School	OPM Selection	Accelerated Repair
Medway	John D Mc Govern Elem	OPM Selection	Accelerated Repair
Melrose	Herbert Clark Hoover	OPM Selection	Accelerated Repair
Middleton	Fuller Meadow	OPM Selection	Accelerated Repair
Nashoba	Florence Sawyer Sch	OPM Selection	Accelerated Repair
North Attleborough	Roosevelt Avenue	OPM Selection	Accelerated Repair
Northampton	Leeds	OPM Selection	Accelerated Repair
Northampton	R. K. Finn Ryan Road	OPM Selection	Accelerated Repair
Norwood	Cornelius M Callahan	OPM Selection	Accelerated Repair
Orleans	Orleans Elementary	OPM Selection	Accelerated Repair
Peabody	John E. McCarthy	OPM Selection	Accelerated Repair
Quincy	Francis W Parker	OPM Selection	Accelerated Repair
Quincy	Lincoln-Hancock Comm Sch	OPM Selection	Accelerated Repair
Randolph	J F Kennedy Elem	OPM Selection	Accelerated Repair
Randolph	Randolph High	OPM Selection	Accelerated Repair
South Shore Reg Voc Tech	So Shore Voc Tech High	OPM Selection	Accelerated Repair
Stoughton	Joseph H Gibbons	OPM Selection	Accelerated Repair
Sudbury	General John Nixon Elem	OPM Selection	Accelerated Repair
Tri County	Tri County Reg Voc Tech	OPM Selection	Accelerated Repair
Tyngsborough	Tyngsborough High School	OPM Selection	Accelerated Repair
Wayland	Claypit Hill School	OPM Selection	Accelerated Repair
Wellesley	Wellesley Middle	OPM Selection	Accelerated Repair
Worcester	Clark St Community	OPM Selection	Accelerated Repair
Worcester	Goddard Sch/Science Tech	OPM Selection	Accelerated Repair
Worcester	Union Hill School	OPM Selection	Accelerated Repair
Worcester	West Tatnuck	OPM Selection	Accelerated Repair
Amherst	Wildwood Elementary	OPM Selection	Core Program
Braintree	East Middle School	OPM Selection	Core Program
Hanover	Sylvester	OPM Selection	Core Program
Holyoke	Lt Elmer J McMahon Elem	OPM Selection	Core Program
Mount Greylock	Mt Greylock Reg High	OPM Selection	Core Program
Needham	Hillside Elementary	OPM Selection	Core Program
Provincetown	Provincetown High	OPM Selection	Core Program
Stoughton	Stoughton High	OPM Selection	Core Program

## Designer Selection

Billerica	Billerica Memorial High School	Designer Selection	Core Program
-----------	--------------------------------	--------------------	--------------

Carver	Carver Elementary School	Designer Selection	Core Program
Hopkinton	Center	Designer Selection	Core Program

**Feasibility Study**

Beverly	Briscoe Middle	Feasibility Study	Core Program
Brookline	Edward Devotion	Feasibility Study	Core Program
Dedham	Early Childhood Center	Feasibility Study	Core Program
Granby	West St	Feasibility Study	Core Program
Minuteman Voc Tech	Minuteman Regional High	Feasibility Study	Core Program
Narragansett	Templeton Center	Feasibility Study	Core Program
New Bedford	John Hannigan	Feasibility Study	Core Program
Newton	Cabot	Feasibility Study	Core Program
Pittsfield	Taconic High	Feasibility Study	Core Program
Woburn	Wyman	Feasibility Study	Core Program

**Schematic Design**

Southern Berkshire	Mt Everett Regional	Schematic Design	Accelerated Repair
Springfield	John F Kennedy Middle	Schematic Design	Accelerated Repair
Springfield	Kensington Avenue	Schematic Design	Accelerated Repair
Boston	Quincy Upper School	Schematic Design	Core Program
Scituate	Gates Intermediate School	Schematic Design	Core Program
Westborough	Sarah W Gibbons Middle	Schematic Design	Core Program
Worcester	Nelson Place	Schematic Design	Core Program

**Approved Project Vote Pending**

Abington	Frolio Jr Hs	Approved Project Vote Pending	Core Program
Berkshire Hills	Monument Mt Reg High	Approved Project Vote Pending	Core Program
Chelsea	Clark Avenue School	Approved Project Vote Pending	Core Program
Holbrook	Holbrook Jr Sr High	Approved Project Vote Pending	Core Program
Swampscott	Hadley	Approved Project Vote Pending	Core Program

**Design Development**

Pathfinder Voc Tech	Pathfinder Voc Tech	Design Development	Accelerated Repair
Quincy	Merrymount	Design Development	Accelerated Repair
Quincy	North Quincy High	Design Development	Accelerated Repair
Quincy	Wollaston School	Design Development	Accelerated Repair
Westford	Col John Robinson	Design Development	Accelerated Repair
Westford	Day Elementary	Design Development	Accelerated Repair
Athol-Royalston	Riverbend	Design Development	Core Program
Boston	Dearborn	Design Development	Core Program
Georgetown	Georgetown Middle/High	Design Development	Core Program
Haverhill	Caleb Dustin Hunking	Design Development	Core Program
Lunenburg	Lunenburg High	Design Development	Core Program
Milford	Woodland	Design Development	Core Program
Newton	A E Angier	Design Development	Core Program
North Middlesex	North Middlesex Reg	Design Development	Core Program
Northborough	Lincoln Street	Design Development	Core Program
Plymouth	Plymouth South High	Design Development	Core Program

**Construction Completion 2016 +**

Blackstone-Millville	Milville Elem	Construction Completion 2016 +	Accelerated Repair
Hatfield	Smith Academy	Construction Completion 2016 +	Accelerated Repair
Hopedale	Memorial	Construction Completion 2016 +	Accelerated Repair
Nashoba Valley Tech	Nashoba Valley Tech H S	Construction Completion 2016 +	Accelerated Repair
Pentucket	Pentucket Reg Middle	Construction Completion 2016 +	Accelerated Repair
Wareham	Wareham Senior High	Construction Completion 2016 +	Accelerated Repair
Worcester	Worcester East Middle	Construction Completion 2016 +	Accelerated Repair
Georgetown	Penn Brook	Construction Completion 2016 +	Core Program
Gloucester	West Parish	Construction Completion 2016 +	Core Program
Lynn	Thurgood Marshall Mid	Construction Completion 2016 +	Core Program
Peabody	J Henry Higgins Middle	Construction Completion 2016 +	Core Program
Wachusett	Mountview Middle	Construction Completion 2016 +	Core Program
Winchester	Winchester High School	Construction Completion 2016 +	Core Program



Winthrop	Winthrop Sr High	Construction Completion 2016 +	Core Program
<b>Construction Completion 2015</b>			
Stoughton	Helen Hansen Elementary	Construction Completion 2015	Accelerated Repair
Stoughton	Joseph R Dawe Jr Elem	Construction Completion 2015	Accelerated Repair
Springfield	Springfield Central High	Construction Completion 2015	Science Lab Initiative
Assabet Valley	Assabet Valley Voc H S	Construction Completion 2015	Core Program
Auburn	Auburn Middle	Construction Completion 2015	Core Program
Ayer-Shirley	Ayer-Shirley Regional Middle/High School	Construction Completion 2015	Core Program
Chicopee	Chicopee Academy	Construction Completion 2015	Core Program
Concord-Carlisle	Concord Carlisle High	Construction Completion 2015	Core Program
Greater Lowell Voc Tec	Gr Lowell Reg Voc Tech	Construction Completion 2015	Core Program
Greenfield	Greenfield High	Construction Completion 2015	Core Program
North Adams	Silvio O Conte Middle	Construction Completion 2015	Core Program
North Reading	North Reading High	Construction Completion 2015	Core Program
Revere	Staff Sergeant James J. Hill School	Construction Completion 2015	Core Program
South Hadley	Plains Elementary	Construction Completion 2015	Core Program
Southern Worcester Cty VT	Bay Path Reg Voc Tech H S	Construction Completion 2015	Core Program
Southwick-Tolland	Powder Mill	Construction Completion 2015	Core Program
Southwick-Tolland	Southwick-Tolland Regional High	Construction Completion 2015	Core Program
Southwick-Tolland	Woodland Elementary	Construction Completion 2015	Core Program
Springfield	Elias Brookings	Construction Completion 2015	Core Program
Sutton	Sutton Middle School	Construction Completion 2015	Core Program
Wakefield	Galvin Middle School	Construction Completion 2015	Core Program
Webster	Park Avenue Elementary	Construction Completion 2015	Core Program
West Bridgewater	West Bridgewater Jr-Sr	Construction Completion 2015	Core Program
Wilmington	Wilmington High	Construction Completion 2015	Core Program

**Construction Completion 2014**

Ashland	Ashland Middle	Construction Completion 2014	Accelerated Repair
Ashland	Henry E Warren Elem	Construction Completion 2014	Accelerated Repair
Blackstone-Millville	Blackstone Millville RHS	Construction Completion 2014	Accelerated Repair
Bridgewater-Raynham	Bridgewater Middle School	Construction Completion 2014	Accelerated Repair
Bridgewater-Raynham	Laliberte Elementary School	Construction Completion 2014	Accelerated Repair
Bridgewater-Raynham	Merrill Elementary School	Construction Completion 2014	Accelerated Repair
Canton	Lt Peter M Hansen	Construction Completion 2014	Accelerated Repair
Canton	Wm H Galvin Middle	Construction Completion 2014	Accelerated Repair
Dighton-Rehoboth	Dighton Elementary	Construction Completion 2014	Accelerated Repair
Dighton-Rehoboth	Dighton Middle School	Construction Completion 2014	Accelerated Repair
Dighton-Rehoboth	Dorothy L Beckwith	Construction Completion 2014	Accelerated Repair
Hamilton-Wenham	Bessie Buker Elementary	Construction Completion 2014	Accelerated Repair
Hamilton-Wenham	Winthrop School	Construction Completion 2014	Accelerated Repair
Medford	Medford High	Construction Completion 2014	Accelerated Repair
So Middlesex Voc Tech Reg	Joseph P Keefe Tech HS	Construction Completion 2014	Accelerated Repair
Springfield	Chestnut Accelerated Middle School	Construction Completion 2014	Accelerated Repair
Springfield	High School/Science-Tech	Construction Completion 2014	Accelerated Repair
Springfield	Margaret C Ells	Construction Completion 2014	Accelerated Repair
Springfield	South End Middle School	Construction Completion 2014	Accelerated Repair
Springfield	Springfield Public Day High School	Construction Completion 2014	Accelerated Repair
Stoughton	West Elementary	Construction Completion 2014	Accelerated Repair
Wellfleet	Wellfleet Elementary	Construction Completion 2014	Accelerated Repair
Wilmington	North Intermediate	Construction Completion 2014	Accelerated Repair
Worcester	Columbus Park	Construction Completion 2014	Accelerated Repair
Worcester	Tatnuck	Construction Completion 2014	Accelerated Repair
Worcester	Worcester Arts Magnet Sch	Construction Completion 2014	Accelerated Repair
New Bedford	New Bedford High	Construction Completion 2014	Waitlist
Essex Agr Tech	Essex Agr and Tech Inst	Construction Completion 2014	Core Program
Greater Lawrence RVT	Gr Lawrence Reg Voc Tech	Construction Completion 2014	Core Program
Greater New Bedford	Gr New Bedford Voc Tech	Construction Completion 2014	Core Program
Stoneham	Stoneham Middle School	Construction Completion 2014	Core Program
Westfield	Abner Gibbs	Construction Completion 2014	Core Program

**Building Complete**

Barnstable	Barnstable United Elementary School	Building Complete	Accelerated Repair
------------	-------------------------------------	-------------------	--------------------

Easton	Moreau Hall	Building Complete	Accelerated Repair
Nauset	Nauset Reg Middle	Building Complete	Accelerated Repair
Pembroke	Hobomock Elementary	Building Complete	Accelerated Repair
Pembroke	North Pembroke Elem	Building Complete	Accelerated Repair
Pembroke	Pembroke Community Middle School	Building Complete	Accelerated Repair
Pembroke	Pembroke High School	Building Complete	Accelerated Repair
Randolph	Randolph Community Middle	Building Complete	Accelerated Repair
Randolph	Randolph High	Building Complete	Accelerated Repair
Southampton	William E Norris	Building Complete	Accelerated Repair
Walpole	Fisher	Building Complete	Accelerated Repair
Westhampton	Westhampton Elem School	Building Complete	Accelerated Repair
Worcester	Chandler Magnet	Building Complete	Accelerated Repair
Worcester	Dr. James Caradonio Center	Building Complete	Accelerated Repair
Worcester	Jacob Hiatt Magnet	Building Complete	Accelerated Repair
Worcester	Lake View	Building Complete	Accelerated Repair
Worcester	May Street	Building Complete	Accelerated Repair
Douglas	Douglas Intermediate School	Building Complete	Green Repair
Salem	Collins Middle	Building Complete	Green Repair
Gardner	Gardner High	Building Complete	Science Lab Initiative
Holyoke	Wm J Dean Voc Tech High	Building Complete	Science Lab Initiative
Medford	Medford High	Building Complete	Science Lab Initiative
Arlington	Thompson	Building Complete	Core Program
Berlin-Boylston	Tahanto Reg High	Building Complete	Core Program
Danvers	Danvers High	Building Complete	Core Program
Douglas	Douglas Elementary	Building Complete	Core Program
Dracut	Dracut Senior High	Building Complete	Core Program
Duxbury	Duxbury High	Building Complete	Core Program
East Bridgewater	East Bridgewater High	Building Complete	Core Program
Franklin	Franklin High	Building Complete	Core Program
Hingham	Hingham Middle School	Building Complete	Core Program
Lexington	Joseph Estabrook	Building Complete	Core Program
Longmeadow	Longmeadow High	Building Complete	Core Program
Marblehead	Glover	Building Complete	Core Program
Marshfield	Marshfield High	Building Complete	Core Program
Methuen	Methuen High	Building Complete	Core Program
Monomoy	Monomoy Regional High School	Building Complete	Core Program
Newburyport	Francis T Bresnahan Elem	Building Complete	Core Program
Newburyport	Rupert A Nock Middle	Building Complete	Core Program
Norfolk County Agriculture	Norfolk County Agr	Building Complete	Core Program
Norton	Norton High	Building Complete	Core Program
Oxford	Oxford Middle	Building Complete	Core Program
Shrewsbury	Sherwood Middle School	Building Complete	Core Program
Somerset-Berkley	Somerset-Berkley High	Building Complete	Core Program
West Springfield	West Springfield High	Building Complete	Core Program
Weston	Field Elem School	Building Complete	Core Program
Williamsburg	Anne T Dunphy	Building Complete	Core Program

**Closeout**

Blackstone-Millville	A F Maloney	Closeout	Accelerated Repair
Blackstone-Millville	John F Kennedy Elem	Closeout	Accelerated Repair
Easton	Easton Junior High	Closeout	Accelerated Repair
Gardner	Gardner Middle School	Closeout	Accelerated Repair
Groton-Dunstable	Groton/Dun Reg'l Middle	Closeout	Accelerated Repair
Lynn	Breed Middle School	Closeout	Accelerated Repair
Lynn	Lynn Voc Tech Institute	Closeout	Accelerated Repair
North Attleborough	Roosevelt Avenue	Closeout	Accelerated Repair
Shawsheen Valley Voc Tech	Shawsheen Valley Voc Tech High School	Closeout	Accelerated Repair
Westfield	Munger Hill	Closeout	Accelerated Repair
Westfield	Paper Mill	Closeout	Accelerated Repair
Barnstable	West Barnstable Elem	Closeout	Green Repair
Haverhill	Consentino	Closeout	Green Repair
Haverhill	John G Whittier	Closeout	Green Repair
Haverhill	Tilton	Closeout	Green Repair
Haverhill	Walnut Square	Closeout	Green Repair

Leverett	Leverett Elementary	Closeout	Green Repair
Marlborough	Francis J Kane	Closeout	Green Repair
Marlborough	Marlborough High	Closeout	Green Repair
Narragansett	Phillipston Memorial	Closeout	Green Repair
Nashoba Valley Tech	Nashoba Valley Tech H S	Closeout	Green Repair
Palmer	Converse Middle	Closeout	Green Repair
Palmer	Old Mill Pond	Closeout	Green Repair
Palmer	Palmer High	Closeout	Green Repair
Peabody	John E Burke	Closeout	Green Repair
Peabody	William A Welch Sr	Closeout	Green Repair
Pentucket	Dr Frederick N Sweetsir	Closeout	Green Repair
Pentucket	Dr John C Page School	Closeout	Green Repair
Salem	Saltonstall School	Closeout	Green Repair
Springfield	Mary M Walsh	Closeout	Green Repair
Springfield	Milton Bradley School	Closeout	Green Repair
Springfield	Warner	Closeout	Green Repair
Springfield	Washington	Closeout	Green Repair
Springfield	White Street	Closeout	Green Repair
West Boylston	Major Edwards Elementary	Closeout	Green Repair
Melrose	Melrose High	Closeout	Science Lab Initiative
Haverhill	Haverhill High	Closeout	Waitlist
New Bedford	New Bedford High	Closeout	Waitlist
Springfield	Forest Park Middle	Closeout	Waitlist
Springfield	Putnam Voc Tech High Sch	Closeout	Waitlist
Worcester	North High	Closeout	Waitlist
Adams-Cheshire	Hoosac Valley High	Closeout	Core Program
Andover	Bancroft Elementary	Closeout	Core Program
Ashburnham-Westminster	Briggs Elem	Closeout	Core Program
Belmont	Roger Wellington	Closeout	Core Program
Beverly	Beverly High	Closeout	Core Program
Billerica	Parker	Closeout	Core Program
Burlington	Marshall Simonds Middle	Closeout	Core Program
Easthampton	Easthampton High	Closeout	Core Program
Fairhaven	Rogers	Closeout	Core Program
Fall River	Morton Middle	Closeout	Core Program
Grafton	Grafton Memorial Senior	Closeout	Core Program
Hampden-Wilbraham	Minnechaug Reg High	Closeout	Core Program
Hanover	Hanover High	Closeout	Core Program
Hudson	John F Kennedy	Closeout	Core Program
Leominster	Leominster Senior High	Closeout	Core Program
Maynard	Maynard High	Closeout	Core Program
Nashoba	Pompositticut	Closeout	Core Program
Norfolk	Freeman-Kennedy Elementary	Closeout	Core Program
Plymouth	Plymouth North High	Closeout	Core Program
Quincy	Central Middle	Closeout	Core Program
Rockland	John W Rogers Middle	Closeout	Core Program
Saugus	Belmonte Saugus Middle	Closeout	Core Program
Somerville	E Somerville Community	Closeout	Core Program
Southeastern Reg Voc Tech	Southeastern Reg Voc Tech	Closeout	Core Program
Springfield	Dryden Memorial	Closeout	Core Program
Sturbridge	Burgess Elementary	Closeout	Core Program
Tewksbury	Tewksbury Memorial High	Closeout	Core Program
Uxbridge	Uxbridge High	Closeout	Core Program
Wellesley	Wellesley Sr High	Closeout	Core Program
Winchester	Vinson-Owen	Closeout	Core Program

**Final Audit Approved**

Leominster	Fall Brook	Final Audit Approved	Accelerated Repair
Leominster	Southeast School	Final Audit Approved	Accelerated Repair
North Brookfield	North Brookfield Elem	Final Audit Approved	Accelerated Repair
Norton	J C Solmonese	Final Audit Approved	Accelerated Repair
Quabbin	Ruggles Lane	Final Audit Approved	Accelerated Repair
Quaboag Regional	Warren Elementary	Final Audit Approved	Accelerated Repair
Wayland	Wayland Middle School	Final Audit Approved	Accelerated Repair
Weymouth	William Seach	Final Audit Approved	Accelerated Repair

Lowell	Moody Elem	Final Audit Approved	Green Repair
Lowell	Washington	Final Audit Approved	Green Repair
Springfield	Arthur T Talmadge	Final Audit Approved	Green Repair
Springfield	Frank H Freedman	Final Audit Approved	Green Repair
Springfield	Glickman Elementary	Final Audit Approved	Green Repair
Springfield	John J Duggan Middle	Final Audit Approved	Green Repair
Springfield	M Marcus Kiley Middle	Final Audit Approved	Green Repair
Springfield	Margaret C Ells	Final Audit Approved	Green Repair
Springfield	Mary M Lynch	Final Audit Approved	Green Repair
Wachusett	Naquag Elementary	Final Audit Approved	Green Repair
Wachusett	Paxton Center	Final Audit Approved	Green Repair
Wachusett	Thomas Prince	Final Audit Approved	Green Repair
Blackstone Valley Reg	Blackstone Valley	Final Audit Approved	Science Lab Initiative
North Attleborough	North Attleboro High	Final Audit Approved	Science Lab Initiative
Tri County	Tri County Reg Voc Tech	Final Audit Approved	Science Lab Initiative
Carlisle	Carlisle School	Final Audit Approved	Core Program
Dedham	Avery	Final Audit Approved	Core Program
Lynnfield	Lynnfield High	Final Audit Approved	Core Program
Natick	Natick High	Final Audit Approved	Core Program
Needham	Newman Elem	Final Audit Approved	Core Program
Old Colony Reg Voc Tech	Old Colony Reg Voc Tech	Final Audit Approved	Core Program
Southbridge	Southbridge High	Final Audit Approved	Core Program

Date of Report: 10/29/2014

Total Projects: 320

MSBA ID	District	School	Project Phase	Project Type	Project Scope	Procurement Type	OPM	Designer	CM/IGC	Commissioning Consultant
20080010405	Abington	Frolio Middle School	Approved Project Vote Pending	Core Program	New Construction	DBB	Knight, Bagge & Anderson Inc.	Ai3 Architects LLC	-	-
200806030505	Adams-Cheshire	Hoosac Valley High School	Closeout	Core Program	Addition / Renovation	CM@R	URS Corporation	Tessier Associates, Inc.	Gilbane Building Company	Strategic Building Solutions, LLC
201300080050	Amherst	Wildwood Elementary	OPM Selection	Core Program			-	-	-	-
200800090003	Andover	Bancroft Elementary School	Closeout	Core Program	New Construction	CM@R	Dore & Whittier Management Partners, Inc.	Symmes Maini & McKee Associates, Inc.	Skanska USA Building, Inc.	Sebesta Blomberg & Associates, Inc.
200900100050	Arlington	Thompson Elementary School	Building Complete	Core Program	New Construction	DBB	PMA Construction Services	HMFH Architects, Inc.	G & R Construction, Inc.	Consulting Engineering Services, LLC
200806100025	Ashburnham-Westminster	John R. Briggs Elementary School	Closeout	Core Program	New Construction	CM@R	STV Incorporated	Lamoureux Pagano & Associates, Inc.	Consigli Construction Company, Inc.	Foreman Building Commissioning, LP
201300140405	Ashland	Ashland Middle	Construction	Accelerated Repair	Roof	DBB	Arcadis U.S., Inc.	Raymond Design Associates, Inc.	Gibson Roofs, Inc.	Gale Associates, Inc.
201300140010	Ashland	Henry E Warren Elem	Construction	Accelerated Repair	Roof	DBB	Arcadis U.S., Inc.	Raymond Design Associates, Inc.	MDM Engineering	Gale Associates, Inc.
200908010605	Assabet Valley	Assabet Valley Regional Technical High School	Construction	Core Program	Repair	DBB	Strategic Building Solutions, LLC	Design Partnership of Cambridge, Inc.	CTA Construction Co., Inc.	Symmes, Maini & McKee Associates
200906150020	Athol-Royalston	Riverbend School	Design Development	Core Program	New Construction	DBB	Symmes Maini & McKee Associates	Mount Vernon Group Architects, Inc.	-	Strategic Building Solutions, LLC
200800170305	Auburn	Auburn Middle	Construction	Core Program	New Construction	CM@R	Skanska USA Building, Inc	Lamoureux Pagano & Associates, Inc.	Fontaine Brothers, Inc.	WSP Flack + Kurtz
201400170305	Auburn	Auburn Middle	OPM Selection	Accelerated Repair	Roof, Boiler		-	-	-	-
201400170010	Auburn	Bryn Mawr	OPM Selection	Accelerated Repair	Roof		-	-	-	-
200806160505	Ayer-Shirley	Ayer-Shirley Regional Middle/High School	Construction	Core Program	Addition / Renovation	CM@R	Dore and Whittier Architects, Inc.	Symmes Maini & McKee Associates, Inc.	Consigli Construction Company, Inc.	WSP Flack + Kurtz
201300200010	Barnstable	Barnstable United Elementary School	Building Complete	Accelerated Repair	Roof	DBB	exPERTcon, Inc.	Gale Associates, Inc.	Capeway Roofing Systems, Inc.	Russo Barr Associates, Inc.
201100200005G	Barnstable	West Barnstable Elem	Closeout	Green Repair	Windows / Doors	DBB	PMA Construction Services	-	Paul J. Rogan Co., Inc.	CBI Consulting Inc.
201400250020	Bellingham	South Elem	OPM Selection	Accelerated Repair	Roof		-	-	-	-
200800260035	Belmont	Roger Wellington Elementary School	Closeout	Core Program	New Construction	CM@R	PMA Construction Services	Jonathan Levi Architects LLC	Skanska USA Building, Inc.	Strategic Building Solutions, LLC
201006180505	Berkshire Hills	Monument Mountain Regional High School	Approved Project Vote Pending	Core Program	Addition / Renovation	DBB	Strategic Building Solutions, LLC	Symmes Maini & McKee Associates, Inc.	-	-
200806200505	Berlin-Boylston	Tahanto Regional High School	Building Complete	Core Program	New Construction	DBB	PMA Construction Services	HMFH Architects, Inc.	CTA Construction Co., Inc.	Strategic Building Solutions, LLC
200800300505	Beverly	Beverly High School	Closeout	Core Program	Addition / Renovation	DBB	HEERY	-	CTA Ventures	-
201300300305	Beverly	Briscoe Middle	Feasibility Study	Core Program			HEERY	Ai3 Architects LLC	-	-
201300310505	Billerica	Billerica Memorial High School	Designer Selection	Core Program			KV Associates, Inc.	-	-	-
200800310015	Billerica	Parker Elementary School	Closeout	Core Program	New Construction	DBB	Joslin, Lesser + Associates Inc.	Symmes Maini & McKee Associates, Inc.	CTA Construction Co., Inc.	Sebesta Blomberg & Associates, Inc.
201208050605	Blackstone Valley Reg	Blackstone Valley	Final Audit Approved	Science Lab Initiative	Addition / Renovation	DBB	Compass Project Management, Inc.	Flansburgh Associates, Inc.	Pergola Construction Co., Inc.	Horizon Engineering Associates, LLP
201206220015	Blackstone-Millville	A F Maloney	Closeout	Accelerated Repair	Roof	DBB	Arcadis U.S., Inc.	DiMarinisi & Wolfe Architects Urban Designers	Greenwood Industries, Inc.	Gale Associates, Inc.
201206220505	Blackstone-Millville	Blackstone Millville RHS	Construction	Accelerated Repair	Roof	DBB	Arcadis U.S., Inc.	DiMarinisi & Wolfe Architects Urban Designers	-	Gale Associates, Inc.
201206220008	Blackstone-Millville	John F Kennedy Elem	Closeout	Accelerated Repair	Roof	DBB	Arcadis U.S., Inc.	DiMarinisi & Wolfe Architects Urban Designers	Greenwood Industries, Inc.	Gale Associates, Inc.
201306220010	Blackstone-Millville	Millville Elem	Construction	Accelerated Repair	Roof	DBB	Pinck & Co., Inc.	CBI Consulting Inc.	MDM Engineering	Simpson Gumpertz & Heger Inc.

201000350074	Boston	Henry Dearborn Middle School	Design Development	Core Program	New Construction	CM@R	Daedalus Projects Inc	Jonathan Levi Architects LLC	-	Symmes, Maini & McKee Associates
201000350565	Boston	Quincy Upper School	Schematic Design	Core Program	New Construction		Skanska USA Building, Inc	HMFH Architects, Inc.	-	-
201400360010	Bourne	James F Peebles Elem	Eligibility Period	Core Program			-	-	-	-
201300400305	Braintree	East Middle School	OPM Selection	Core Program			-	-	-	-
201206250320	Bridgewater-Raynham	Bridgewater Middle School	Construction	Accelerated Repair	Roof	DBB	Vertex Construction Services	-	-	CBI Consulting Inc.
201206250050	Bridgewater-Raynham	Laliberte Elementary School	Construction	Accelerated Repair	Roof	DBB	Vertex Construction Services	Raymond Design Associates, Inc.	-	CBI Consulting Inc.
201206250020	Bridgewater-Raynham	Merrill Elementary School	Construction	Accelerated Repair	Roof	DBB	Vertex Construction Services	Raymond Design Associates, Inc.	-	CBI Consulting Inc.
201400440421	Brockton	Ashfield Middle School	OPM Selection	Accelerated Repair	Roof, Boiler		-	-	-	-
201400440080	Brockton	Barrett Russell School	OPM Selection	Accelerated Repair	Windows / Doors		-	-	-	-
201400440010	Brockton	Brookfield	OPM Selection	Accelerated Repair	Roof		-	-	-	-
201400440035	Brockton	Gilmore	OPM Selection	Accelerated Repair	Roof, Boiler		-	-	-	-
201100460015	Brookline	Edward Devotion	Feasibility Study	Core Program			-	HMFH Architects, Inc.	-	-
201000480303	Burlington	Marshall Simonds Middle School	Closeout	Core Program	Addition / Renovation	CM@R	Construction Monitoring Services, Inc.	Knight, Bagge & Anderson, Inc.	CTA Construction Co., Inc.	RDK Engineers
201200500012	Canton	Lt Peter M Hansen	Construction	Accelerated Repair	Windows / Doors	DBB	Vertex Construction Services	CSS Architects Incorporated	Lockheed Window Corporations	Simpson Gumpertz & Heger Inc.
201200500305	Canton	Wm H Galvin Middle	Construction	Accelerated Repair	Windows / Doors	DBB	Vertex Construction Services	CSS Architects Incorporated	Lockheed Window Corporations	Simpson Gumpertz & Heger Inc.
200800510025	Carlisle	Carlisle School	Final Audit Approved	Core Program	Addition / Renovation	DBB	Daedalus Projects Inc	HMFH Architects, Inc.	H.V. Collins Co., Inc.	Horizon Engineering Associates, LLP
201300520015	Carver	Carver Elementary School	Designer Selection	Core Program			PMA Construction Services	-	-	-
200800570050	Chelsea	Clark Avenue School	Approved Project Vote Pending	Core Program	New Construction		Pinck & Co., Inc.	HMFH Architects, Inc.	-	-
200900610021	Chicopee	Chicopee Academy	Construction	Core Program	Addition / Renovation	DBB	Arcadis U.S., Inc.	Caolo & Bieniek Associates, Inc.	-	Symmes, Maini & McKee Associates
200906400505	Concord-Carlisle	Concord-Carlisle Regional High School	Construction	Core Program	New Construction	CM@R	KV Associates, Inc.	OMR Architects, Inc.	Turner Construction Company	Strategic Building Solutions, LLC
200800710505	Danvers	Danvers High School	Building Complete	Core Program	Addition / Renovation	DBB	Construction Monitoring Services, Inc.	DiNisco Design Partnership, Limited	Bacon Construction Co, Inc.	Turner Facilities Management Solutions
201400720030	Dartmouth	George H Potter	OPM Selection	Accelerated Repair	Roof		Pinck & Co., Inc.	Russo Barr Associates, Inc.	-	-
200800730010	Dedham	Avery Elementary School	Final Audit Approved	Core Program	New Construction	CM@R	Construction Monitoring Services, Inc.	Dore & Whittier Architects, Inc.	Consigli Construction Company, Inc.	WSP Flack + Kurtz
201200730005	Dedham	Early Childhood Center	Feasibility Study	Core Program			Construction Monitoring Services, Inc.	Knight, Bagge & Anderson, Inc.	-	-
201306500005	Dighton-Rehoboth	Dighton Elementary	Construction	Accelerated Repair	Roof	DBB	Arcadis U.S., Inc.	Dietz & Company Architects, Inc.	-	Gale Associates, Inc.
201306500305	Dighton-Rehoboth	Dighton Middle School	Construction	Accelerated Repair	Roof	DBB	Arcadis U.S., Inc.	Dietz & Company Architects, Inc.	-	Gale Associates, Inc.
201306500310	Dighton-Rehoboth	Dorothy L Beckwith	Construction	Accelerated Repair	Roof	DBB	Arcadis U.S., Inc.	Dietz & Company Architects, Inc.	-	Gale Associates, Inc.
200800770010	Douglas	Douglas Elementary	Building Complete	Core Program	New Construction - Model School	DBB	HEERY	DiNisco Design Partnership, Limited	CTA Construction Co., Inc.	Consulting Engineering Services, LLC
200800770100G	Douglas	Douglas Intermediate Elementary School	Building Complete	Green Repair	Roof, Windows / Doors, Boiler	DBB	HEERY	DiNisco Design Partnership, Limited	CTA Construction Co., Inc.	Consulting Engineering Services, LLC
200800790505	Dracut	Dracut Senior High School	Building Complete	Core Program	Addition / Renovation	DBB	Hill International Company	Mount Vernon Group Architects, Inc.	CTA Construction Co., Inc.	RDK Engineers
201000820505	Duxbury	Duxbury High School	Building Complete	Core Program	New Construction - Model School	CM@R	KV Associates, Inc.	Mount Vernon Group Architects, Inc.	Dimeo Construction Company	WSP Flack + Kurtz
200900830505	East Bridgewater	East Bridgewater High School	Building Complete	Core Program	New Construction - Model School	DBB	Hill International Company	Ai3 Architects LLC	Fontaine Brothers, Inc.	Foreman Building Commissioning, LP
200800860505	Easthampton	Easthampton High School	Closeout	Core Program	New Construction	DBB	Strategic Building Solutions, LLC	Caolo & Bieniek Associates, Inc.	Fontaine Brothers, Inc.	Consulting Engineering Services, LLC

201200880405	Easton	Easton Junior High	Closeout	Accelerated Repair	Roof	DBB	PMA Construction Services	Russo Barr Associates, Inc.	Gibson Roofs, Inc.	Gale Associates, Inc.
201300880020	Easton	Moreau Hall	Building Complete	Accelerated Repair	Roof	DBB	Skanska USA Building, Inc	Baker/Wohl Architects, Inc.	Capeway Roofing Systems, Inc.	Gale Associates, Inc.
200809130705	Essex Agr Tech	Essex Agricultural and Technical High School	Construction	Core Program	New Construction	CM@R	PMA Construction Services	Design Partnership of Cambridge, Inc.	Gilbane Building Company	Turner Facilities Management Solutions
200800940020	Fairhaven	Rogers Elementary School	Closeout	Core Program	New Construction - Model School	DBB	Daedalus Projects Inc	HMFH Architects, Inc.	CTA Construction Co., Inc.	Consulting Engineering Services, LLC
200900950315	Fall River	James Madison Morton Middle School	Closeout	Core Program	New Construction	DBB	Maguire Group Inc.	Mount Vernon Group Architects, Inc.	J & J Contractors, Inc.	Sebesta Blomberg & Associates, Inc.
201400960405	Falmouth	Lawrence	OPM Selection	Accelerated Repair	Windows / Doors	-	-	-	-	-
200901010505	Franklin	Franklin High School	Building Complete	Core Program	New Construction - Model School	DBB	Daedalus Projects Inc	Ai3 Architects LLC	Bacon-Agostini Construction Joint Venture	Consulting Engineering Services, LLC
201408180605	Franklin County	Franklin County Tech	OPM Selection	Accelerated Repair	Windows / Doors	-	Strategic Building Solutions, LLC	-	-	-
201401030001	Gardner	Elm Street School	OPM Selection	Accelerated Repair	Windows / Doors, Boiler	-	-	-	-	-
201201030505	Gardner	Gardner High	Building Complete	Science Lab Initiative	Addition / Renovation	DBB	Pinck & Co., Inc.	Lamoureux Pagano & Associates, Inc.	Five Star Building Corp.	Fitzmeyer & Tocci Associates, Inc.
201201030405	Gardner	Gardner Middle School	Closeout	Accelerated Repair	Boiler	-	Leftfield, LLC	Richard D. Kimball Company, Inc.	Royal Steam Heater Co.	Fitzmeyer & Tocci Associates, Inc.
200801050505	Georgetown	Georgetown Middle/High School	Design Development	Core Program	Addition / Renovation	DBB	Municipal Building Consultants, Inc.	Drummey Rosane Anderson, Inc.	-	WSP Flack + Kurtz
200901050010	Georgetown	Penn Brook Elementary School	Construction	Core Program	New Construction	DBB	Municipal Building Consultants, Inc.	Drummey Rosane Anderson, Inc.	Brait Builders Corp.	Rist-Frost-Shurway Engineering, P.C.
201406740050	Gill-Montague	Sheffield Elementary	OPM Selection	Accelerated Repair	Windows / Doors, Boiler	-	-	-	-	-
200901070050	Gloucester	West Parish Elementary School	Construction	Core Program	New Construction	CM@R	Knight, Bagge & Anderson Inc.	Dore & Whittier Architects, Inc.	-	Fitzmeyer & Tocci Associates, Inc.
200801100505	Grafton	Grafton Memorial Senior	Closeout	Core Program	New Construction	CM@R	Joslin, Lesser + Associates Inc.	Symmes Maini & McKee Associates, Inc.	Dimeo Construction Company	Horizon Engineering Associates, LLP
201201110010	Granby	West St	Feasibility Study	Core Program	-	-	Strategic Building Solutions, LLC	-	-	-
201108230605	Greater Lawrence RVT	Gr Lawrence Reg Voc Tech	Construction	Core Program	Repair	DBB	Vertex Construction Services	Richard D. Kimball Company, Inc.	E. Amanti & Sons, Inc.	WSP Flack + Kurtz
200908280605	Greater Lowell Voc Tec	Greater Lowell Regional Technical High School	Construction	Core Program	Addition / Renovation	CM@R	Joslin, Lesser + Associates Inc.	Knight, Bagge & Anderson, Inc.	Consigli Construction Company, Inc.	Horizon Engineering Associates, LLP
201008250605	Greater New Bedford	Greater New Bedford Vocational Technical High School	Construction	Core Program	Addition / Renovation	DBB	Construction Monitoring Services, Inc.	Drummey Rosane Anderson, Inc.	Agostini Construction Co., Inc.	Symmes, Maini & McKee Associates
201401140030	Greenfield	Green River	OPM Selection	Accelerated Repair	Roof, Windows / Doors, Boiler	-	-	-	-	-
200901140505	Greenfield	Greenfield High School	Construction	Core Program	New Construction	CM@R	Construction Monitoring Services, Inc.	Dore & Whittier Architects, Inc.	Shawmut Design and Construction	BVH Integrated Services, P.C.
201206730305	Groton-Dunstable	Groton/Dun Reg'l Middle	Closeout	Accelerated Repair	Roof	DBB	Hill International Company	ICON architecture, inc.	Greenwood Industries, Inc.	Russo Barr Associates, Inc.
201306750007	Hamilton-Wenham	Bessie Buker Elementary	Construction	Accelerated Repair	Boiler	DBB	NETCO Construction Project Managers, Inc.	Habeeb & Associates Architects, Inc.	Multitemp Mechanical Corporation	Strategic Building Solutions, LLC
201306750015	Hamilton-Wenham	Winthrop School	Construction	Accelerated Repair	Windows / Doors, Boiler	DBB	NETCO Construction Project Managers, Inc.	Habeeb & Associates Architects, Inc.	E. Amanti & Sons, Inc.	CBI Consulting Inc.   Strategic Building Solutions, LLC
200806800505	Hampden-Wilbraham	Minnechaug Regional High School	Closeout	Core Program	New Construction - Model School	DBB	Pinnacle One, Inc.	Mount Vernon Group Architects, Inc.	Fontaine Brothers, Inc.	Horizon Engineering Associates, LLP
201406800030	Hampden-Wilbraham	Soule Road	OPM Selection	Accelerated Repair	Windows / Doors	-	-	-	-	-
201406800310	Hampden-Wilbraham	Wilbraham Middle	OPM Selection	Accelerated Repair	Roof	-	-	-	-	-
200801220505	Hanover	Hanover High School	Closeout	Core Program	New Construction	DBB	PMA Construction Services	HMFH Architects, Inc.	Callahan, Inc.	Horizon Engineering Associates, LLP
201301220015	Hanover	Sylvester	OPM Selection	Core Program	-	-	-	-	-	-

201301270505	Hatfield	Smith Academy	Construction	Accelerated Repair	Roof, Windows / Doors	DBB	Hill International Company	Civitects PC	Silktown Roofing	Building Enclosure Associates, LLC
201201280035	Haverhill	Caleb Dustin Hunking	Design Development	Core Program	New Construction		Joslin, Lesser + Associates Inc.	JCJ Architecture, PC	-	Strategic Building Solutions, LLC
201101280100G	Haverhill	Consentino	Closeout	Green Repair	Windows / Doors	DBB	Vertex Construction Services	CSS Architects Incorporated	New England Builders & Contractors, Inc.	RDK Engineers   Russo Barr Associates, Inc.
W20034393	Haverhill	Haverhill High School	Closeout	Waitlist	Repair		-	-	-	-
201101280085G	Haverhill	John G Whittier	Closeout	Green Repair	Windows / Doors	DBB	Vertex Construction Services	CSS Architects Incorporated	New England Builders & Contractors, Inc.	Russo Barr Associates, Inc.
201101280075G	Haverhill	Tilton	Closeout	Green Repair	Roof	DBB	Vertex Construction Services	CSS Architects Incorporated	Titan Roofing, Inc.	Russo Barr Associates, Inc.
201101280080G	Haverhill	Walnut Square	Closeout	Green Repair	Roof, Windows / Doors	DBB	Vertex Construction Services	CSS Architects Incorporated	Titan Roofing, Inc.	RDK Engineers   Russo Barr Associates, Inc.
201001310410	Hingham	Hingham Middle School	Building Complete	Core Program	New Construction - Model School	DBB	Knight, Bagge & Anderson Inc.	Ai3 Architects LLC	Brait Builders Corp.	Foreman Building Commissioning, LP
200801330505	Holbrook	Holbrook Junior-Senior High School	Approved Project Vote Pending	Core Program	New Construction		Symmes Maini & McKee Associates, Inc.	Flansburgh Associates, Inc.	-	-
201401370045	Holyoke	E N White Elem	OPM Selection	Accelerated Repair	Boiler		-	-	-	-
201201370015	Holyoke	Lt Elmer J McMahan Elem	OPM Selection	Core Program			-	-	-	-
201401370025	Holyoke	Morgan Elem	OPM Selection	Accelerated Repair	Boiler		-	-	-	-
201201370605	Holyoke	Wm J Dean Voc Tech High	Building Complete	Science Lab Initiative	Addition / Renovation	DBB	Skanska USA Building, Inc	Kaestle Boos Associates, Inc.	RAC Builders, Inc.	BVH Integrated Services, P.C.
201301380010	Hopedale	Memorial	Construction	Accelerated Repair	Roof	DBB	Atlantic Construction and Management, Inc.	Civitects PC	MDM Engineering	Simpson Gumpertz & Heger Inc.
201301390005	Hopkinton	Center	Designer Selection	Core Program			Compass Project Management, Inc.	Drummey Rosane Anderson, Inc.	-	-
200801410410	Hudson	John F. Kennedy Middle School	Closeout	Core Program	New Construction	DBB	PMA Construction Services	OMR Architects, Inc.	Bacon-Agostini Construction Joint Venture	WSP Flack + Kurtz
201401410007	Hudson	Mulready Elementary	OPM Selection	Accelerated Repair	Roof		-	-	-	-
201401440015	Ipswich	Winthrop	Eligibility Period	Core Program			-	-	-	-
201201530007	Leominster	Fall Brook	Final Audit Approved	Accelerated Repair	Boiler	DBB	Compass Project Management, Inc.	Reinhardt Associates, Inc.	NB Kenney Company, Inc	Horizon Engineering Associates, LLP
200801530505	Leominster	Leominster High School	Closeout	Core Program	Addition / Renovation	CM@R	Daedalus Projects Inc	Lamoureux Pagano & Associates, Inc.	S.O.M. Construction Ent., Inc.	Horizon Engineering Associates, LLP
201401530030	Leominster	Northwest	OPM Selection	Accelerated Repair	Roof		-	-	-	-
201201530010	Leominster	Southeast School	Final Audit Approved	Accelerated Repair	Roof, Boiler	DBB	Compass Project Management, Inc.	Reinhardt Associates, Inc.	NB Kenney Company, Inc	Horizon Engineering Associates, LLP   Russo Barr Associates, Inc.
201101540005G	Leverett	Leverett Elementary	Closeout	Green Repair	Roof, Windows / Doors	DBB	Potomac Capital Advisors	DiMarinisi & Wolfe Architects Urban Designers	-	Russo Barr Associates, Inc.
201101550010E	Lexington	Joseph Estabrook	Building Complete	Core Program	New Construction	CM@R	Hill International Company	Partnership, Limited	Shawmut Design and Construction	BVH Integrated Services, P.C.
200801590505	Longmeadow	Longmeadow High School	Building Complete	Core Program	New Construction	CM@R	Joslin, Lesser + Associates Inc.	OMR Architects, Inc.	Gilbane Building Company	Foreman Building Commissioning, LP
201101600027G	Lowell	Moody Elem	Final Audit Approved	Green Repair	Roof, Windows / Doors	DBB	NETCO Construction Project Managers, Inc.	ICON architecture, inc.	Paul J. Rogan Co., Inc.	Building Enclosure Associates, LLC
201101600055G	Lowell	Washington	Final Audit Approved	Green Repair	Roof, Windows / Doors, Boiler	DBB	NETCO Construction Project Managers, Inc.	ICON architecture, inc.	Alpha Contracting Associates, Inc.	Building Enclosure Associates, LLC   RDK Engineers
201001620505	Lunenburg	Lunenburg High School	Design Development	Core Program	New Construction		Joslin, Lesser + Associates Inc.	Tappe Associates, Inc.	Shawmut Design and Construction	Cannon Design
201201630405	Lynn	Breed Middle School	Closeout	Accelerated Repair	Windows / Doors	DBB	Diversified Project Management	Kaestle Boos Associates, Inc.	GVW, Inc.	CBI Consulting Inc.
201401630045	Lynn	E J Harrington	OPM Selection	Accelerated Repair	Roof		NETCO Construction Project Managers, Inc.	Habeeb & Associates Architects, Inc.	-	-
201201630605	Lynn	Lynn Voc Tech Institute	Closeout	Accelerated Repair	Roof	DBB	Diversified Project Management	Kaestle Boos Associates, Inc.	Gibson Roofs, Inc.	CBI Consulting Inc.



200901630305	Lynn	Thurgood Marshall Middle School	Construction	Core Program	New Construction	CM@R	Joslin, Lesser + Associates Inc.	Raymond Design Associates, Inc.	Walsh Brothers, Inc.	Rist-Frost-Shumway Engineering, P.C.
201401630040	Lynn	Wm P Connery	OPM Selection	Accelerated Repair	Roof		NETCO Construction Project Managers, Inc.	Habeeb & Associates Architects, Inc.	-	-
200901640505	Lynnfield	Lynnfield High School	Final Audit Approved	Core Program	Addition / Renovation	DBB	HEERY	Edward Rowse Architects, Inc.	E.A. Colangeli Construction Co. Inc	Fitzemeyer & Tocci Associates, Inc.
200801680020	Marblehead	Glover School	Building Complete	Core Program	New Construction	DBB	Municipal Building Consultants, Inc.	JCJ Architecture, PC	G & R Construction, Inc.	RDK Engineers
201101700008G	Marlborough	Francis J Kane	Closeout	Green Repair	Windows / Doors	DBB	Hill International Company	Baker/Wohl Architects, Inc.	A&A Window Products, Inc.	Building Enclosure Associates, LLC
201101700505G	Marlborough	Marlborough High	Closeout	Green Repair	Roof, Windows / Doors, Boiler	DBB	Hill International Company	Baker/Wohl Architects, Inc.	A&A Window Products, Inc.   Feeley, McAnespie, Inc.   Veterans Development Corporation, Inc.	Building Enclosure Associates, LLC   RDK Engineers
201101710505	Marshfield	Marshfield High	Building Complete	Core Program	New Construction - Model School	DBB	Compass Project Management, Inc.	Ai3 Architects LLC	Brait Builders Ventures	Sebesta Blomberg & Associates, Inc.
200801740505	Maynard	Maynard High School	Closeout	Core Program	New Construction	DBB	Municipal Building Consultants, Inc.	Tappe Associates, Inc.	CTA Construction Co., Inc.	WSP Flack + Kurtz
201401750007	Medfield	Ralph Wheelock School	OPM Selection	Accelerated Repair	Boiler		-	-	-	-
201201760505	Medford	Medford High	Building Complete	Science Lab Initiative	Addition / Renovation	DBB	Leftfield, LLC	DiNisco Design Partnership, Limited	G & R Construction, Inc.	Cannon Design
201301760505	Medford	Medford High	Construction	Accelerated Repair	Windows / Doors, Boiler	DBB	Architectural Consulting Group, LLC	Dietz & Company Architects, Inc.	NB Kenney Company, Inc	Symmes, Maini & McKee Associates
201401770013	Medway	John D Mc Govern Elem	OPM Selection	Accelerated Repair	Windows / Doors		Arcadis U.S., Inc.	-	-	-
201401780017	Melrose	Herbert Clark Hoover	OPM Selection	Accelerated Repair	Windows / Doors		-	-	-	-
201201780505	Melrose	Melrose High	Closeout	Science Lab Initiative	Addition / Renovation	DBB	Hill International Company	Ai3 Architects LLC	G & R Construction, Inc.	WSP Flack + Kurtz
200801810505	Methuen	Methuen High School	Building Complete	Core Program	Addition / Renovation	CM@R	KBA/Trident	Finegold Alexander and Associates Inc.	Consigli Construction Company, Inc.	Environmental Health and Engineering
201401840003	Middleton	Fuller Meadow	OPM Selection	Accelerated Repair	Roof		-	-	-	-
201101850090	Milford	Woodland	Design Development	Core Program	New Construction		Joslin, Lesser + Associates Inc.	HMFH Architects, Inc.	Shawmut Design and Construction	Consulting Engineering Services, LLC
201401870005	Millis	Clyde F Brown	Eligibility Period	Core Program			-	-	-	-
200908300605	Minuteman Voc Tech	Minuteman Regional High School	Feasibility Study	Core Program			Skanska USA Building, Inc.	Kaestle Boos Associates, Inc.	-	-
201107129999	Monomoy	Monomoy Regional High School	Building Complete	Core Program	New Construction - Model School	DBB	Skanska USA Building, Inc	Mount Vernon Group Architects, Inc.	Fontaine Brothers, Inc.	Sebesta Blomberg & Associates, Inc.
201307150505	Mount Greylock	Mt Greylock Reg High	OPM Selection	Core Program			-	-	-	-
201107200003G	Narragansett	Phillipston Memorial	Closeout	Green Repair	Boiler	DBB	Potomac Capital Advisors	DiMarinisi & Wolfe Architects Urban Designers	-	Rist-Frost-Shumway Engineering, P.C.
200807200020	Narragansett	Templeton Center School	Feasibility Study	Core Program			Strategic Building Solutions, LLC	Symmes Maini & McKee Associates, Inc.	-	-
201407250025	Nashoba	Florence Sawyer Sch	OPM Selection	Accelerated Repair	Boiler		-	-	-	-
200807250015	Nashoba	Pompositicut Elementary School	Closeout	Core Program	Addition / Renovation	DBB	Construction Monitoring Services, Inc.	Symmes Maini & McKee Associates, Inc.	P.J. Stella Construction Corp.	Strategic Building Solutions, LLC
200908520605G	Nashoba Valley Tech	Nashoba Valley Tech H S	Closeout	Green Repair	Roof	DBB	-	-	-	-
201308520605	Nashoba Valley Tech	Nashoba Valley Tech H S	Construction	Accelerated Repair	Roof	DBB	STV Incorporated	CGKV Architects, Inc.	-	CBI Consulting Inc.
200801980505	Natick	Natick High School	Final Audit Approved	Core Program	New Construction - Model School	DBB	Hill International Company	Ai3 Architects LLC	Brait Builders Corp.	Rist-Frost-Shumway Engineering, P.C.
201306600305	Nauset	Nauset Reg Middle	Building Complete	Accelerated Repair	Roof	DBB	Strategic Building Solutions, LLC	ICON architecture, inc.	Capeway Roofing Systems, Inc.	Russo Barr Associates, Inc.
201301990035	Needham	Hillside Elementary	OPM Selection	Core Program			-	-	-	-
200901990050	Needham	Newman Elementary School	Final Audit Approved	Core Program	Repair	CM@R	-	Drummeey Rosane Anderson, Inc.	Consigli Construction Company, Inc.	Rist-Frost-Shumway Engineering, P.C.
200902010070	New Bedford	John Hannigan	Feasibility Study	Core Program			Daedalus Projects Inc	Turowski2 Architecture, Inc.	-	-
1	New Bedford	New Bedford High	Closeout	Waitlist	Repair	DBB	-	-	-	-

W201002010505P 2	New Bedford	New Bedford High	Construction	Waitlist	Repair		Architectural Consulting Group, LLC	-	Sparks Company, Inc.	-
201102040005	Newburyport	Francis T Bresnahan Elem	Building Complete	Core Program	New Construction - Model School	DBB	HEERY	HMFH Architects, Inc.	CTA Construction Co., Inc.	Fitzmeyer & Tocci Associates, Inc.
201002040305	Newburyport	Rupert A. Nock Middle School	Building Complete	Core Program	Addition / Renovation	CM@R	HEERY	Miller Dyer Spears Inc.	Gilbane Building Company	Fitzmeyer & Tocci Associates, Inc.
201102070005	Newton	A E Angier	Design Development	Core Program	New Construction	CM@R	Joslin, Lesser + Associates Inc.	DiNisco Design Partnership, Limited	-	Fitzmeyer & Tocci Associates, Inc.
201302070025	Newton	Cabot	Feasibility Study	Core Program	New Construction	DBB	Joslin, Lesser + Associates Inc.	-	-	-
200802080005	Norfolk	Freeman-Kennedy Elementary School	Closeout	Core Program	New Construction	DBB	Joslin, Lesser + Associates Inc.	Flansburgh Associates, Inc.	Fontaine Brothers, Inc.	WSP Flack + Kurtz
200909150705	Norfolk County Agriculture	Norfolk County Agr	Building Complete	Core Program	Addition / Renovation	DBB	Compass Project Management, Inc.	Turowski2 Architecture, Inc.	Brait Builders Corp.	Rist-Frost-Shumway Engineering, P.C.
200802090305	North Adams	Silvio O Conte Middle School	Construction	Core Program	Addition / Renovation	DBB	Strategic Building Solutions, LLC	Jones Whitsett Architects, Inc. f/k/a Margo Jones	PDS Engineering and Construction, Inc.	Rist-Frost-Shumway Engineering, P.C.
201202120505	North Attleborough	North Attleboro High	Final Audit Approved	Science Lab Initiative	Addition / Renovation	DBB	Skanska USA Building, Inc	Kaestle Boos Associates, Inc.	M. O'Connor Contracting, Inc.	Consulting Engineering Services, LLC
201202120015	North Attleborough	Roosevelt Avenue	Closeout	Accelerated Repair	Windows / Doors	DBB	Skanska USA Building, Inc	Russo Barr Associates, Inc.	Evergreen Construction Corporataion	Gale Associates, Inc.
201402120015	North Attleborough	Roosevelt Avenue	OPM Selection	Accelerated Repair	Boiler		-	-	-	-
201202150015	North Brookfield	North Brookfield Elem	Final Audit Approved	Accelerated Repair	Windows / Doors	DBB	Strategic Building Solutions, LLC	CBI Consulting Inc.	Garland Construction Corp.	Simpson Gumpertz & Heger Inc.
201107350505	North Middlesex	North Middlesex Reg	Design Development	Core Program	New Construction	DBB	HEERY	Symmes Maini & McKee Associates, Inc.	-	Horizon Engineering Associates, LLP
201002170505	North Reading	North Reading High School	Construction	Core Program	Addition / Renovation	CM@R	PMA Construction Services	Dore & Whittier Architects, Inc.	Gilbane Building Company	Cannon Design
201402100025	Northampton	Leeds	OPM Selection	Accelerated Repair	Roof		-	-	-	-
201402100029	Northampton	R. K. Finn Ryan Road	OPM Selection	Accelerated Repair	Roof		-	-	-	-
201102130003	Northborough	Lincoln Street	Design Development	Core Program	Addition / Renovation	DBB	Strategic Building Solutions, LLC	Lamoureux Pagano & Associates, Inc.	-	Fitzmeyer & Tocci Associates, Inc.
201202180015	Norton	J C Solmonese	Final Audit Approved	Accelerated Repair	Roof	DBB	Joslin, Lesser + Associates Inc.	Habeeb & Associates Architects, Inc.	Silktown Roofing	Simpson Gumpertz & Heger Inc.
200902180505	Norton	Norton High School	Building Complete	Core Program	Addition / Renovation	CM@R	Pinck & Co., Inc.	JCJ Architecture, PC	W. T. Rich Company Inc.	Rist-Frost-Shumway Engineering, P.C.
201402200010	Norwood	Cornelius M Callahan	OPM Selection	Accelerated Repair	Boiler		PMA Construction Services	Consulting Engineering Services, LLC	-	-
200908550605	Old Colony Reg Voc Tech	Old Colony Regional Vocational Technical High School	Final Audit Approved	Core Program	Repair	DBB	Vertex Construction Services	Habeeb & Associates Architects, Inc.	J.D. Rivet & Co., Inc.	Consulting Engineering Services, LLC
201302230010	Orange	Dexter Park	Eligibility Period	Core Program			-	-	-	-
201402240005	Orleans	Orleans Elementary	OPM Selection	Accelerated Repair	Windows / Doors		-	-	-	-
200802260405	Oxford	Oxford Middle School	Building Complete	Core Program	Repair	DBB	Diversified Project Management	CGKV Architects, Inc.	J.J. Cardosi, Inc.	Cannon Design
201102270305G	Palmer	Converse Middle	Closeout	Green Repair	Roof, Boiler	DBB	Diversified Project Management	-	Royal Steam Heater Co.  Titan Roofing, Inc.	Strategic Building Solutions, LLC
201102270008G	Palmer	Old Mill Pond	Closeout	Green Repair	Roof, Boiler	DBB	Diversified Project Management	-	Royal Steam Heater Co.	Strategic Building Solutions, LLC
201102270505G	Palmer	Palmer High	Closeout	Green Repair	Roof, Boiler	DBB	Diversified Project Management	-	Royal Steam Heater Co.  Titan Roofing, Inc.	Strategic Building Solutions, LLC
201308600605	Pathfinder Voc Tech	Pathfinder Voc Tech	Design Development	Accelerated Repair	Roof	DBB	exPERTcon, Inc.	Baker/Wohl Architects, Inc.	-	Building Enclosure Associates, LLC
200802290305	Peabody	Higgins Middle School	Construction	Core Program	New Construction	DBB	Daedalus Projects Inc	DiNisco Design Partnership, Limited	Bacon-Agostini Construction Joint Venture	BVH Integrated Services, P.C.
201102290007G	Peabody	John E Burke	Closeout	Green Repair	Roof, Windows / Doors, Boiler	DBB	Daedalus Projects Inc	LPBA/ Architects, Inc.	-	Sebesta Blomberg & Associates, Inc.
201402290016	Peabody	John E. McCarthy	OPM Selection	Accelerated Repair	Roof, Windows / Doors		-	-	-	-
201102290027G	Peabody	William A Welch Sr	Closeout	Green Repair	Roof	DBB	Daedalus Projects Inc	LPBA/ Architects, Inc.	-	Sebesta Blomberg & Associates, Inc.

201302310010	Pembroke	Hobomock Elementary	Building Complete	Accelerated Repair	Roof	DBB	Pinck & Co., Inc.	The S/L/A/M Collaborative	Greenwood Industries, Inc.	CBI Consulting Inc.
201302310015	Pembroke	North Pembroke Elem	Building Complete	Accelerated Repair	Roof	DBB	Pinck & Co., Inc.	The S/L/A/M Collaborative	Paul J. Rogan Co., Inc.	CBI Consulting Inc.
201302310305	Pembroke	Pembroke Community Middle School	Building Complete	Accelerated Repair	Roof	DBB	Pinck & Co., Inc.	The S/L/A/M Collaborative	Paul J. Rogan Co., Inc.	CBI Consulting Inc.
201302310505	Pembroke	Pembroke High School	Building Complete	Accelerated Repair	Roof	DBB	Pinck & Co., Inc.	The S/L/A/M Collaborative	Greenwood Industries, Inc.	CBI Consulting Inc.
201107450020G	Pentucket	Dr Frederick N Sweetsir	Closeout	Green Repair	Roof, Windows / Doors, Boiler	DBB	PMA Construction Services	Knight, Bagge & Anderson, Inc.	E. Amanti & Sons, Inc.	CBI Consulting Inc.   RDK Engineers
201107450015G	Pentucket	Dr John C Page School	Closeout	Green Repair	Roof, Windows / Doors, Boiler	DBB	PMA Construction Services	Knight, Bagge & Anderson, Inc.	Capeway Roofing Systems, Inc.	CBI Consulting Inc.   RDK Engineers
201307450405	Pentucket	Pentucket Reg Middle	Construction	Accelerated Repair	Roof, Boiler	DBB	Arcadis U.S., Inc.	CGKV Architects, Inc.	Ambient Temperature Corporation	CBI Consulting Inc.   Strategic Building Solutions, LLC
201002360510	Pittsfield	Taconic High School	Feasibility Study	Core Program			Skanska USA Building, Inc	Drummeys Rosane Anderson, Inc.	-	-
200802390505	Plymouth	Plymouth North High School	Closeout	Core Program	New Construction - Model School	DBB	Ted Gentry Associates, Inc	Ai3 Architects LLC	J & J Contractors, Inc.	Sebesta Blomberg & Associates, Inc.
201202390515	Plymouth	Plymouth South High	Design Development	Core Program	New Construction		Ted Gentry Associates, Inc	Ai3 Architects LLC	-	Rist-Frost-Shumway Engineering, P.C.
201302420505	Provincetown	Provincetown High	OPM Selection	Core Program			-	-	-	-
201207530030	Quabbin	Ruggles Lane	Final Audit Approved	Accelerated Repair	Roof, Windows / Doors	DBB	Vertex Construction Services	Turowski2 Architecture, Inc.	PDS Engineering and Construction, Inc.	Simpson Gumpertz & Heger Inc.
201207780005	Quaboag Regional	Warren Elementary	Final Audit Approved	Accelerated Repair	Boiler	DBB	Coast and Harbor Association, Inc.	Lindgren & Sharples, Inc.	AAlanco Service Corporation	Strategic Building Solutions, LLC
200802430315	Quincy	Central Middle School	Closeout	Core Program	New Construction - Model School	DBB	Tishman Construction Corporation of MA	Ai3 Architects LLC	H.V. Collins Co., Inc.	Sebesta Blomberg & Associates, Inc.
201402430075	Quincy	Francis W Parker Lincoln-Hancock Comm Sch	OPM Selection	Accelerated Repair	Windows / Doors		PMA Construction Services	-	-	-
201402430035	Quincy		OPM Selection	Accelerated Repair	Windows / Doors		PMA Construction Services	-	-	-
201302430060	Quincy	Merrymount	Design Development	Accelerated Repair	Windows / Doors	DBB	Skanska USA Building, Inc	Habeeb & Associates Architects, Inc.	-	Simpson Gumpertz & Heger Inc.
201302430510	Quincy	North Quincy High	Design Development	Accelerated Repair	Windows / Doors	DBB	Skanska USA Building, Inc	Habeeb & Associates Architects, Inc.	-	Simpson Gumpertz & Heger Inc.
201302430320	Quincy	Reay E Sterling Middle	Eligibility Period	Core Program			-	-	-	-
201302430110	Quincy	Wollaston School	Design Development	Accelerated Repair	Windows / Doors	DBB	Skanska USA Building, Inc	Habeeb & Associates Architects, Inc.	-	Simpson Gumpertz & Heger Inc.
201402440018	Randolph	J F Kennedy Elem	OPM Selection	Accelerated Repair	Windows / Doors		-	-	-	-
201302440410	Randolph	Randolph Community Middle	Building Complete	Accelerated Repair	Boiler	DBB	NETCO Construction Project Managers, Inc.	Taylor & Burns, Inc.	AAlanco Service Corporation	Consulting Engineering Services, LLC
201302440505	Randolph	Randolph High	Building Complete	Accelerated Repair	Roof	DBB	NETCO Construction Project Managers, Inc.	Taylor & Burns, Inc.	John F. Shea Company, Inc.	Gale Associates, Inc.
201402440505	Randolph	Randolph High	OPM Selection	Accelerated Repair	Windows / Doors		-	-	-	-
201002480035	Revere	Staff Sergeant James J. Hill School	Construction	Core Program	New Construction	DBB	Hill International Company	-	CTA Construction Co., Inc.	Rist-Frost-Shumway Engineering, P.C.
200802510305	Rockland	John W. Rogers Middle School	Closeout	Core Program	New Construction	CM@R	Daedalus Projects Inc	Dore & Whittier Architects, Inc.	Agostini Construction Co., Inc.	Consulting Engineering Services, LLC
200902580305G	Salem	Collins Middle School	Building Complete	Green Repair	Roof, Windows / Doors, Boiler, Building Envelope	CM@R	KV Associates, Inc.	Reinhardt Associates, Inc.	Gilbane Building Company	Rist-Frost-Shumway Engineering, P.C.
201002580050G	Salem	Saltonstall School	Closeout	Green Repair	Roof, Windows / Doors, Boiler, Building Envelope	CM@R	KV Associates, Inc.	Reinhardt Associates, Inc.	Gilbane Building Company	Rist-Frost-Shumway Engineering, P.C.
201002620305	Saugus	Belmonte Middle School	Closeout	Core Program	Repair	CM@R	Skanska USA Building, Inc	Fletcher Thompson Architecture Engineering, LLC	Consigli Construction Company, Inc.	Consulting Engineering Services, LLC
201202640305	Scituate	Gates Intermediate School	Schematic Design	Core Program			Daedalus Projects Inc	Dore & Whittier Architects, Inc.	-	-
201208710605	Shawsheen Valley Voc Tech	Shawsheen Valley Voc Tech High School	Closeout	Accelerated Repair	Boiler	DBB	Diversified Project Management	Shekar & Associates, Inc.	NB Kenney Company, Inc	Fitzmeyer & Tocci Associates, Inc.

200802710305	Shrewsbury	Sherwood Middle School	Building Complete	Core Program	New Construction	CM@R	PMA Construction Services	Lamoureux Pagano & Associates, Inc.	Gilbane Building Company	RDK Engineers
201308290605	So Middlesex Voc Tech Reg	Joseph P Keefe Tech HS	Construction	Accelerated Repair	Roof	DBB	PMA Construction Services	Raymond Design Associates, Inc.	Greenwood Industries, Inc.	Russo Barr Associates, Inc.
20081119999	Somerset-Berkley	Somerset-Berkley High	Building Complete	Core Program	New Construction - Model School	DBB	Skanska USA Building, Inc	Ai3 Architects LLC	Bacon-Agostini Construction Joint Venture	Horizon Engineering Associates, LLP
200902740111E	Somerville	East Somerville Community School at Cummings	Closeout	Core Program	Addition / Renovation	CM@R	PMA Construction Services	Maguire Group Inc.	Gilbane Building Company	Foreman Building Commissioning, LP
201302740505	Somerville	Somerville High	Eligibility Period	Core Program			-	-	-	-
200902780015	South Hadley	Plains School	Construction	Core Program	New Construction	DBB	Arcadis U.S., Inc.	Jones Whitsett Architects, Inc. f/k/a Margo Jones	Fontaine Brothers, Inc.	Strategic Building Solutions, LLC
201408730605	South Shore Reg Voc Tech	So Shore Voc Tech High	OPM Selection	Accelerated Repair	Boiler		exPERTcon, Inc.	Richard D. Kimball Company, Inc.	-	-
201202750005	Southampton	William E Norris	Building Complete	Accelerated Repair	Roof	DBB	Tishman Construction Corporation of MA	Reinhardt Associates, Inc.	Greenwood Industries, Inc.	Building Enclosure Associates, LLC
200802770505	Southbridge	Southbridge High School	Final Audit Approved	Core Program	New Construction	CM@R	Joslin, Lesser + Associates Inc.	Tappe Associates, Inc.	Consigli Construction Company, Inc.	Environmental Health and Engineering
200908720605	Southeastern Reg Voc Tech	Southeastern Regional Vocational Technical School	Closeout	Core Program	Addition / Renovation	CM@R	Hill International Company	Drummey Rosane Anderson, Inc.	W. T. Rich Company Inc.	RDK Engineers
201407650505	Southern Berkshire	Mt Everett Regional	Schematic Design	Accelerated Repair	Roof, Boiler		NETCO Construction Project Managers, Inc.	Dietz & Company Architects, Inc.	-	-
200908760605	Southern Worcester Cty VT	Bay Path Regional Vocational Technical High School	Construction	Core Program	Addition / Renovation	CM@R	HEERY	Kaestle Boos Associates, Inc.	Consigli Construction Company, Inc.	RDK Engineers
201107660305	Southwick-Tolland	Powder Mill	Construction	Core Program	Repair	DBB	Strategic Building Solutions, LLC	JCJ Architecture, PC	PDS Engineering and Construction, Inc.	BVH Integrated Services, P.C.
201107660505	Southwick-Tolland	Southwick-Tolland Regional High	Construction	Core Program	Addition / Renovation	DBB	Strategic Building Solutions, LLC	JCJ Architecture, PC	Fontaine Brothers, Inc.	BVH Integrated Services, P.C.
200807660010	Southwick-Tolland	Woodland Elementary School	Construction	Core Program	Addition / Renovation	DBB	Strategic Building Solutions, LLC	JCJ Architecture, PC	PDS Engineering and Construction, Inc.	BVH Integrated Services, P.C.
200902810165G	Springfield	Arthur T Talmadge	Final Audit Approved	Green Repair	Windows / Doors	DBB	-	-	-	-
201302810310	Springfield	Chestnut Accelerated Middle School	Construction	Accelerated Repair	Roof	DBB	Atlantic Construction and Management, Inc.	CBI Consulting Inc.	-	Building Enclosure Associates, LLC
201102810125E	Springfield	Dryden Memorial	Closeout	Core Program	Addition / Renovation	CM@R	Arcadis U.S., Inc.	Drummey Rosane Anderson, Inc.	Morganti/Aquadro & Cerruti	BVH Integrated Services, P.C.
201102810030E	Springfield	Elias Brookings	Construction	Core Program	New Construction	CM@R	Arcadis U.S., Inc.	Drummey Rosane Anderson, Inc.	Morganti/Aquadro & Cerruti	BVH Integrated Services, P.C.
W20014137	Springfield	Forest Park Middle School	Closeout	Waitlist	Addition / Renovation	CM@R	Arcadis U.S., Inc.	Perkins Eastman	Consigli Construction Company, Inc.	Foreman Building Commissioning, LP
200902810075G	Springfield	Frank H Freedman	Final Audit Approved	Green Repair	Roof, Windows / Doors	DBB	-	-	-	Building Enclosure Associates, LLC
200902810068G	Springfield	Glickman Elementary	Final Audit Approved	Green Repair	Windows / Doors	DBB	-	-	-	Building Enclosure Associates, LLC
201302810530	Springfield	High School/Science-Tech	Construction	Accelerated Repair	Roof	DBB	Atlantic Construction and Management, Inc.	CBI Consulting Inc.	Kronenberger & Sons Restoration, Inc.	Building Enclosure Associates, LLC
201402810328	Springfield	John F Kennedy Middle	Schematic Design	Accelerated Repair	Windows / Doors		Arcadis U.S., Inc.	Gale Associates, Inc.	-	-
200902810320G	Springfield	John J Duggan Middle	Final Audit Approved	Green Repair	Roof, Windows / Doors	DBB	-	-	-	Building Enclosure Associates, LLC
201402810110	Springfield	Kensington Avenue	Schematic Design	Accelerated Repair	Windows / Doors		Arcadis U.S., Inc.	Gale Associates, Inc.	-	-
200902810330G	Springfield	M Marcus Kiley Middle	Final Audit Approved	Green Repair	Roof	DBB	-	-	-	Building Enclosure Associates, LLC
200802810060G	Springfield	Margaret C Ells	Final Audit Approved	Green Repair	Windows / Doors	DBB	-	-	-	Building Enclosure Associates, LLC
201302810060	Springfield	Margaret C Ells	Construction	Accelerated Repair	Roof	DBB	Atlantic Construction and Management, Inc.	CBI Consulting Inc.	Allied Restoration Corporation	Building Enclosure Associates, LLC
200902810140G	Springfield	Mary M Lynch	Final Audit Approved	Green Repair	Windows / Doors	DBB	-	-	-	Building Enclosure Associates, LLC
200902810155G	Springfield	Mary M Walsh	Closeout	Green Repair	Roof	DBB	-	-	-	Building Enclosure Associates, LLC

200902810023G	Springfield	Milton Bradley School	Closeout	Green Repair	Roof	DBB	-	-	-	Building Enclosure Associates, LLC
W20054428	Springfield	Roger L. Putnam Vocational Technical High School	Closeout	Waitlist	New Construction	CM@R	Pinnacle One, Inc.	Drummey Rosane Anderson, Inc.	Consigli/Morganti	Strategic Building Solutions, LLC
201302810355	Springfield	South End Middle School	Construction	Accelerated Repair	Roof	DBB	Atlantic Construction and Management, Inc.	CBI Consulting Inc.	-	Building Enclosure Associates, LLC
201202810500	Springfield	Springfield Central High	Construction	Science Lab Initiative	Addition / Renovation	CM@R	Leftfield, LLC	DiNisco Design Partnership, Limited	Morganti/Aquadro & Cerruti	Horizon Engineering Associates, LLP
201302810550	Springfield	Springfield Public Day High School	Construction	Accelerated Repair	Roof	DBB	Atlantic Construction and Management, Inc.	CBI Consulting Inc.	-	Building Enclosure Associates, LLC
200902810180G	Springfield	Warner	Closeout	Green Repair	Roof, Windows / Doors, Boiler	DBB	-	-	-	Building Enclosure Associates, LLC
200902810185G	Springfield	Washington	Closeout	Green Repair	Windows / Doors	DBB	-	-	-	Building Enclosure Associates, LLC
200902810190G	Springfield	White Street	Closeout	Green Repair	Windows / Doors	DBB	-	-	-	Building Enclosure Associates, LLC
200902840405	Stoneham	Stoneham Middle School	Construction	Core Program	Addition / Renovation	CM@R	Joslin, Lesser + Associates Inc.	Tappe Associates, Inc.	Shawmut Design and Construction	RDK Engineers
201302850010	Stoughton	Helen Hansen Elementary	Construction	Accelerated Repair	Windows / Doors	DBB	Hill International Company	Russo Barr Associates, Inc.	-	Building Enclosure Associates, LLC
201402850025	Stoughton	Joseph H Gibbons	OPM Selection	Accelerated Repair	Roof, Windows / Doors	DBB	Atlantic Construction and Management, Inc.	-	-	-
201302850014	Stoughton	Joseph R Dawe Jr Elem	Construction	Accelerated Repair	Windows / Doors	DBB	Hill International Company	Russo Barr Associates, Inc.	-	Building Enclosure Associates, LLC
201302850505	Stoughton	Stoughton High	OPM Selection	Core Program	-	-	-	-	-	-
201302850020	Stoughton	West Elementary	Construction	Accelerated Repair	Roof	DBB	Hill International Company	Russo Barr Associates, Inc.	Titan Roofing, Inc.	Building Enclosure Associates, LLC
200802870005	Sturbridge	Burgess Elementary School	Closeout	Core Program	Addition / Renovation	DBB	Lamoureux Pagano & Associates, Inc.	Drummey Rosane Anderson, Inc.	Fontaine Brothers, Inc.	Horizon Engineering Associates, LLP
201402880025	Sudbury	General John Nixon Elem	OPM Selection	Accelerated Repair	Roof, Windows / Doors	DBB	Skanska USA Building, Inc.	Baker/Wohl Architects, Inc.	-	-
200802900305	Sutton	Sutton Middle School	Construction	Core Program	Addition / Renovation	DBB	Strategic Building Solutions, LLC	Flansburgh Associates, Inc.	Brait Builders Corp.	RDK Engineers
201102910010	Swampscott	Hadley	Approved Project Vote Pending	Core Program	New Construction	DBB	Hill International Company	Mount Vernon Group Architects, Inc.	-	-
200802950505	Tewksbury	Tewksbury Memorial High School	Closeout	Core Program	New Construction - Model School	DBB	HEERY	Symmes Maini & McKee Associates, Inc.	CTA Ventures	Sebesta Blomberg & Associates, Inc.
201208780605	Tri County	Tri County Reg Voc Tech	Final Audit Approved	Science Lab Initiative	Addition / Renovation	DBB	Hill International Company	Ai3 Architects LLC	Federal Construction Corp.	-
201408780605	Tri County	Tri County Reg Voc Tech	OPM Selection	Accelerated Repair	Boiler	DBB	Strategic Building Solutions, LLC	Shekar & Associates, Inc.	-	-
201403010505	Tyngsborough	Tyngsborough High School	OPM Selection	Accelerated Repair	Roof, Boiler	DBB	Municipal Building Consultants, Inc.	-	-	-
200803040505	Uxbridge	Uxbridge High	Closeout	Core Program	New Construction	CM@R	Joslin, Lesser + Associates Inc.	Raymond Design Associates, Inc.	Shawmut Design and Construction	Turner Facilities Management Solutions
200907750305	Wachusett	Mountview Middle School	Construction	Core Program	New Construction	DBB	-	Lamoureux Pagano & Associates, Inc.	CTA Construction Co., Inc.	Fitzmeyer & Tocci Associates, Inc.
201107750035G	Wachusett	Naquag Elementary	Final Audit Approved	Green Repair	Roof, Windows / Doors, Boiler	DBB	Strategic Building Solutions, LLC	LPBA/ Architects, Inc.	MDM Engineering	Rist-Frost-Shumway Engineering, P.C.
201107750040G	Wachusett	Paxton Center	Final Audit Approved	Green Repair	Roof, Windows / Doors	DBB	Strategic Building Solutions, LLC	LPBA/ Architects, Inc.	MDM Engineering	Rist-Frost-Shumway Engineering, P.C.
201107750045G	Wachusett	Thomas Prince	Final Audit Approved	Green Repair	Roof, Windows / Doors, Boiler	DBB	Strategic Building Solutions, LLC	LPBA/ Architects, Inc.	MDM Engineering	Rist-Frost-Shumway Engineering, P.C.
201003050310	Wakefield	Galvin Middle School	Construction	Core Program	New Construction	CM@R	Joslin, Lesser + Associates Inc.	Tappe Associates, Inc.	Bond Brothers, Inc.	B2Q Associates, Inc.
201303070015	Walpole	Fisher	Building Complete	Accelerated Repair	Roof	DBB	NETCO Construction Project Managers, Inc.	ICON architecture, inc.	Rockwell Roofing, Inc.	Gale Associates, Inc.
201303100505	Wareham	Wareham Senior High	Construction	Accelerated Repair	Roof	DBB	Hill International Company	Tighe & Bond, Inc.	-	Russo Barr Associates, Inc.
201403150005	Wayland	Claypit Hill School	OPM Selection	Accelerated Repair	Windows / Doors	DBB	Pinck & Co., Inc.	CGKV Architects, Inc.	-	-

201203150305	Wayland	Wayland Middle School	Final Audit Approved	Accelerated Repair	Roof	DBB	Joslin, Lesser + Associates Inc.	DiMarinisi & Wolfe Architects Urban Designers	Capeway Roofing Systems, Inc.	CBI Consulting Inc.
200903160015	Webster	Park Avenue Elementary School	Construction	Core Program	New Construction	DBB	Hill International Company	Dore & Whittier Architects, Inc.	CTA Construction Co., Inc.	Cannon Design
201403170305	Wellesley	Wellesley Middle	OPM Selection	Accelerated Repair	Windows / Doors		Arcadis U.S., Inc.	CSS Architects Incorporated	-	-
200803170505	Wellesley	Wellesley Senior School	Closeout	Core Program	New Construction	CM@R	-	Symmes Maini & McKee Associates, Inc.	-	Rist-Frost-Shumway Engineering, P.C.
201303180005	Wellfleet	Wellfleet Elementary	Construction	Accelerated Repair	Roof	DBB	Architectural Consulting Group, LLC	CSS Architects Incorporated	DDC Construction Inc.	Russo Barr Associates, Inc.
201103220005G	West Boylston	Major Edwards Elementary	Closeout	Green Repair	Windows / Doors	DBB	URS Corporation	Reinhardt Associates, Inc.	-	Cannon Design
201003230505	West Bridgewater	West Bridgewater Middle-Senior High School	Construction	Core Program	New Construction	DBB	Strategic Building Solutions, LLC	Flansburgh Associates, Inc.	CTA Construction Co., Inc.	Cannon Design
200903320505	West Springfield	West Springfield High School	Building Complete	Core Program	New Construction - Model School	DBB	Strategic Building Solutions, LLC	Symmes Maini & McKee Associates, Inc.	Fontaine Brothers, Inc.	Turner Facilities Management Solutions
200903210305	Westborough	Gibbons Middle School	Schematic Design	Core Program			HEERY	Habeeb & Associates Architects, Inc.	-	-
200903250020	Westfield	Abner Gibbs Elementary School	Construction	Core Program	New Construction - Model School	DBB	Skanska USA Building, Inc	Jones Whitsett Architects, Inc. f/k/a Margo Jones	Fontaine Brothers, Inc.	Horizon Engineering Associates, LLP
201103250033E	Westfield	Munger Hill	Closeout	Accelerated Repair	Roof	DBB	Vertex Construction Services	Knight, Bagge & Anderson, Inc.	Allied Restoration Corporation	Building Enclosure Associates, LLC
201203250036	Westfield	Paper Mill	Closeout	Accelerated Repair	Roof	DBB	Vertex Construction Services	Knight, Bagge & Anderson, Inc.	R & H Roofing, LLP	Building Enclosure Associates, LLC
201303260025	Westford	Col John Robinson	Design Development	Accelerated Repair	Windows / Doors	DBB	Strategic Building Solutions, LLC	Gale Associates, Inc.	-	CBI Consulting Inc.
201303260007	Westford	Day Elementary	Design Development	Accelerated Repair	Windows / Doors	DBB	Strategic Building Solutions, LLC	Gale Associates, Inc.	-	CBI Consulting Inc.
201303270005	Westhampton	Westhampton Elem School	Building Complete	Accelerated Repair	Roof, Windows / Doors, Boiler	DBB	Atlantic Construction and Management, Inc.	CSS Architects Incorporated	-	Building Enclosure Associates, LLC
200903300012	Weston	Field Elementary School	Building Complete	Core Program	New Construction	DBB	Compass Project Management, Inc.	Jonathan Levi Architects LLC	Colantonio, Inc.	Foreman Building Commissioning, LP
201203360080	Weymouth	William Seach	Final Audit Approved	Accelerated Repair	Boiler	DBB	PMA Construction Services	BLW Engineers, Inc.	Multitemp Mechanical Corporation	B2Q Associates, Inc.
200803400005	Williamsburg	Anne T. Dunphy School	Building Complete	Core Program	Addition / Renovation	DBB	Arcadis U.S., Inc.	Drummeys Rosane Anderson, Inc.	Enfield Builders, Inc.	B2Q Associates, Inc.
201203420060	Wilmington	North Intermediate	Construction	Accelerated Repair	Windows / Doors	DBB	Diversified Project Management	-	-	CBI Consulting Inc.
200903420505	Wilmington	Wilmington High School	Construction	Core Program	New Construction	CM@R	Joslin, Lesser + Associates Inc.	Dore & Whittier Architects, Inc.	Gilbane Building Company	Symmes, Maini & McKee Associates
200803440025	Winchester	Vinson-Owen Elementary School	Closeout	Core Program	New Construction	DBB	Skanska USA Building, Inc	Tappe Associates, Inc.	CTA Construction Co., Inc.	Turner Facilities Management Solutions
201003440505	Winchester	Winchester High School	Construction	Core Program	Addition / Renovation	CM@R	Skanska USA Building, Inc	Symmes Maini & McKee Associates, Inc.	Consigli Construction Company, Inc.	RDK Engineers
200803460505	Winthrop	Winthrop High School	Construction	Core Program	New Construction	CM@R	Skanska USA Building, Inc	HMFH Architects, Inc.	Gilbane Building Company	WSP Flack + Kurtz
201203470060	Woburn	Wyman	Feasibility Study	Core Program			Municipal Building Consultants, Inc.	DiNisco Design Partnership, Limited	-	-
201203480052	Worcester	Chandler Magnet	Building Complete	Accelerated Repair	Windows / Doors	DBB	Tishman Construction Corporation of MA	Turowski2 Architecture, Inc.	J.J. Cardosi, Inc.	Russo Barr Associates, Inc.
201403480055	Worcester	Clark St Community	OPM Selection	Accelerated Repair	Windows / Doors		-	-	-	-
201303480060	Worcester	Columbus Park	Construction	Accelerated Repair	Windows / Doors, Boiler	DBB	Architectural Consulting Group, LLC	The S/L/A/M Collaborative	Contractor's Network, Inc.	RDK Engineers   Russo Barr Associates, Inc.
201203488099	Worcester	Dr. James Caradonio Center	Building Complete	Accelerated Repair	Boiler	DBB	Tishman Construction Corporation of MA	Turowski2 Architecture, Inc.	CAM HVAC & Construction, Inc.	RDK Engineers   Russo Barr Associates, Inc.
201403480100	Worcester	Goddard Sch/Science Tech	OPM Selection	Accelerated Repair	Windows / Doors		-	-	-	-



201203480140	Worcester	Jacob Hiatt Magnet	Building Complete	Accelerated Repair	Boiler	DBB	Tishman Construction Corporation of MA	Turowski2 Architecture, Inc.	CAM HVAC & Construction, Inc.	RDK Engineers
201203480145	Worcester	Lake View	Building Complete	Accelerated Repair	Windows / Doors	DBB	Tishman Construction Corporation of MA	Turowski2 Architecture, Inc.	J.J. Cardosi, Inc.	Russo Barr Associates, Inc.
201203480175	Worcester	May Street	Building Complete	Accelerated Repair	Windows / Doors	DBB	Tishman Construction Corporation of MA	Turowski2 Architecture, Inc.	J.J. Cardosi, Inc.	Russo Barr Associates, Inc.
201203480200	Worcester	Nelson Place	Schematic Design	Core Program			Tishman Construction Corporation of MA	Lamoureux Pagano & Associates, Inc.	-	-
W20004048	Worcester	North High School	Closeout	Waitlist	New Construction	CM@R	-	-	-	-
201303480230	Worcester	Tatnuck	Construction	Accelerated Repair	Windows / Doors	DBB	Architectural Consulting Group, LLC	The S/L/A/M Collaborative	GVW, Inc.	Russo Barr Associates, Inc.
201403480240	Worcester	Union Hill School	OPM Selection	Accelerated Repair	Windows / Doors		-	-	-	-
201403480260	Worcester	West Tatnuck	OPM Selection	Accelerated Repair	Windows / Doors		-	-	-	-
201303480225	Worcester	Worcester Arts Magnet Sch	Construction	Accelerated Repair	Windows / Doors	DBB	Architectural Consulting Group, LLC	The S/L/A/M Collaborative	GVW, Inc.	Russo Barr Associates, Inc.
201303480420	Worcester	Worcester East Middle	Construction	Accelerated Repair	Boiler	DBB	Architectural Consulting Group, LLC	The S/L/A/M Collaborative	Contractor's Network, Inc.	RDK Engineers







**Projects in Construction  
MSBA Grant Basis and Maximum Grant Amount  
Data Reported as of October 29, 2014**

Core Program and Waitlist Totals			\$2,623,232,454															*Includes Alternates	\$1,635,138,946
Project	Grade	Contractor	Total Construction Cost*	Projected Enrollment	PFA or Bid Data	Proposed Sq.Ft.	Construction Cost/Sq.Ft.	Building Cost	Building Cost/Sq.Ft.	Procurement Type	Construction Start Date	Substantial Completion	Schedule Variance (days)	Physical Progress	Change Orders	Change Orders %	Construction Status	Est Max Total Facilities Grant	
<b>CAPITAL PIPELINE PROJECTS IN CONSTRUCTION</b>																			
Winchester High School	High School	Consigli Construction Company, Inc.	\$101,118,622	1,370	PFA	288,840	\$350	\$60,656,324	\$210	CM-at-Risk	23-Apr-14		0	5%	\$216,312	0.214%	Early site package work is in process and pressure injected footings have been installed, foundation work is progressing and steel is scheduled to arrive in November 2014.	\$39,559,238	
Winthrop High School	High School	Gilbane Building Company	\$63,542,179	970	PFA	187,917	\$338	\$42,616,843	\$227	CM-at-Risk	07-Jul-14	01-Jul-16	0	10%	\$0	0.000%	Abatement and demolition of the existing school have started.		
<b>Waitlist Totals</b>			<b>\$1,976,083</b>															<b>\$5,486,439</b>	
New Bedford High School	High School	Sparks Company, Inc.	\$1,976,083	4,000	PFA	563,000	\$4	\$1,685,772	\$3	Design/Bid/Build	27-Aug-14	12-Dec-14	0	70%	\$0	0.000%	Installation continues on low voltage fiber optics and cat II wiring. Computer equipment has arrived on site.	\$5,486,439	