

Massachusetts School Building Authority

CAPITAL PLANNING PROJECT OVERVIEW REPORT

June 29, 2016

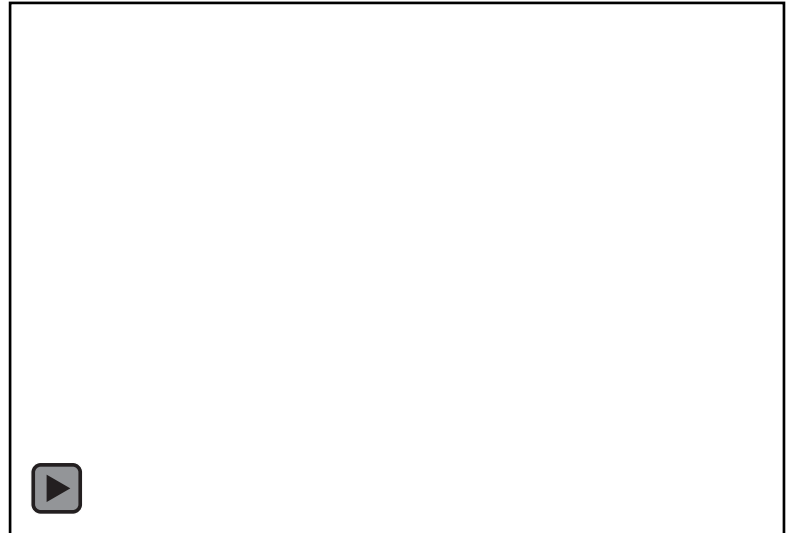
TABLE OF CONTENTS

Capital Pipeline Overview	2
Statements of Interest (SOIs)	3
Core Program	4-13
Eligibility Period	4
Consultant Selection	5-6
Feasibility Study	7
Schematic Design	8
Commissioning	9
Design Development	10
Summary of Bid Data	11
Construction	12-13
Accelerated Repair Program	14-18
Project Variances	19
<i>Appendix</i>	
(A) <i>Project Status List</i>	
(B) <i>2016 and 2017 Estimated Bid Dates</i>	
(C) <i>Construction Status Report</i>	

CAPITAL PIPELINE OVERVIEW

Current Projects Status

A total of 369 projects that have received invitations from the Board of Directors (“Board”) to collaborate with the Massachusetts School Building Authority (“MSBA”) are currently in the MSBA’s Eligibility Period and Capital Pipeline. The summary chart provides the number of projects in Eligibility Period and each phase of the Capital Pipeline. For a detailed look at the Capital Pipeline projects, please go to www.massschoolbuildings.org/building and select “Capital Pipeline Status Chart”.



2016 Progress Report

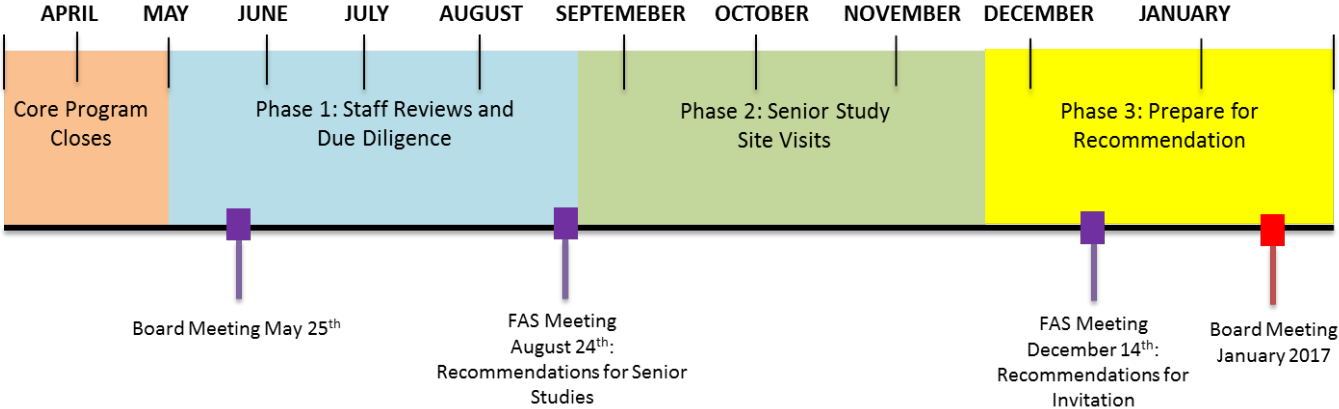
- Statement of Interest (“SOI”) 2016
 - The deadline to file SOIs for consideration in the Accelerated Repair Program (“ARP”) closed on Friday, February 12, 2016. Staff issued recommendations for invitation and/or no further review at the May 25, 2016 Board Meeting and anticipate completing the recommendations for the 2016 ARP SOIs at the July 20, 2016 Board Meeting.
 - The deadline to file SOIs for consideration in the Core Program closed on April 8, 2016. Staff are currently underway with the content review and anticipate submitting recommendations for Senior Study Visits at the August 24, 2016 Facilities Assessment Subcommittee to support site visits commencing in September 2016.
- Eligibility Period
 - There are 19 districts in Eligibility Period with three anticipating invitation to Feasibility Study at the July Board Meeting.
- Feasibility Study/Schematic Design
 - One district received MSBA approval for selection of an Owner’s Project Manager (“OPM”).
 - Three districts have completed Designer Selection.
- ARP
 - The remaining one district from the 2015 SOI opening will be presented at the July 20, 2016 Board Meeting.
- Construction Costs – Core Program
 - Of the 14 bids and/or executions of a Guaranteed Maximum Price (“GMP”) in 2016, three have been reported to date.
 - Of the 14 bids and/or executions of a GMP, three bids were within the estimated budget.
- Substantial Completion
 - Thirteen projects are projecting substantial completion in 2016.
 - Five of the 13 projects reached substantial completion.
 - Ten projects are projected to complete substantial completion in 2017.

STATEMENTS OF INTEREST (SOIs)

2016 SOI Process

The 2016 SOI submittal period opened on January 8, 2016. The deadline to file SOIs for consideration in the ARP, which is primarily for the repair and/or replacement of roofs, windows/doors, and/or boilers in an otherwise structurally sound facility, closed on Friday, February 12, 2016. Staff issued recommendations for invitation and/or no further review at the May 25, 2016 Board Meeting and anticipate completing the recommendations for the 2016 ARP SOIs at the July 20, 2016 Board Meeting.

The deadline for consideration in the Core Program, which is primarily for projects beyond the scope of ARP, including extensive repairs, renovations, addition/renovations, and new school construction, closed on Friday, April 8, 2016. Staff have begun the due diligence on the SOIs that were submitted for the Core Program and have finished the completeness review. Staff are currently underway with the content review and anticipate submitting recommendations for Senior Study Visits at the August 24, 2016 Facilities Assessment Subcommittee to support site visits commencing in September 2016.



CORE PROGRAM

ELIGIBILITY PERIOD

There are 19 districts remaining in Eligibility Period, and 13 projects have secured funding.

An agreed-upon enrollment between the district and the MSBA is one of the preliminary requirements that a district must complete prior to the district being eligible to receive an invitation from the MSBA Board to the Feasibility Study phase. The district must submit to the MSBA enrollment information and related documentation using MSBA's on-line enrollment projection system.

District	School	Date of Invitation to Eligibility Period	30 days	60 days	90 days		180 days		270 days	Date of Invitation to Feasibility Study (Estimated)
			ICC	SBC	Online Enrollment Projection Info	Ed Profile Questionnaire	Maintenance Documents	Enrollment Certification	Local Authorization	
Belmont	Belmont HS	1/27/2016	X	X	X	X			X	Sep-16
Ludlow	Chapin Street ES	1/27/2016	X	X	X	X				Nov-16
Manchester Essex RSD	Memorial ES	1/27/2016	X	X	X	X				Nov-16
Marlborough	Richer ES	1/27/2016	X	X	X	X			X	Jul-16
Triton RSD	Pine Grove ES	1/27/2016	X	X	X	X	X		X	Jul-16
Blue Hills RSD	Blue Hills RTHS	3/30/2016	X	X	X	X	X		X	Jul-16
Danvers	Ivan G. Smith ES	3/30/2016	X	X					X	Jan-17
Dennis-Yarmouth RSD	Mattacheese MS	3/30/2016	X	X					X	Nov-16
Foxborough	Mabelle M. Burrell ES	3/30/2016	X	X					X	Jan-17
Marblehead	Elbridge Gerry ES	3/30/2016	X	X	X	X			X	Sep-16
Northbridge	W. Edward Balmer ES	3/30/2016	X	X					X	Jan-17
Shrewsbury	Beal Early Childhood Center	3/30/2016	X	X						Nov-16
Wareham	Minot Forest ES	3/30/2016	X	X					X	Jan-17
Arlington	Arlington HS	5/25/2016								TBD
Framingham	Fuller MS	5/25/2016							X	Sep-16
Natick	JFK MS	5/25/2016	X	X		X			X	Sep-16
Pentucket RSD	Pentucket Regional HS	5/25/2016	X							TBD
Tewksbury	Louise Davy Trahan ES	5/25/2016	X						X	Nov-16
Weymouth	Maria Weston Chapman MS	5/25/2016	X							Jan-17

CONSULTANT SELECTION

OPM Selection

After the district has completed all Eligibility Period requirements and has received a Board Invitation to Feasibility Study, the district procures an Owner’s Project Manager (“OPM”). Since the last report, one district has completed their OPM selection (shaded in the table below). Currently, there are six districts in the Capital Pipeline that are in the process of procuring an OPM.

District	School	Anticipated Selection
Everett	George Keverian School	June 2016
Blue Hills RSD*	Blue Hills RTHS	July 2016
Clarksburg	Clarksburg ES	July 2016
Fall River	BMC Durfee HS	August 2016
Lexington	Maria Hastings	August 2016
Triton RSD*	Pine Grove ES	August 2016
Harvard	Harvard ES	September 2016
Tisbury	Tisbury ES	September 2016
Holyoke	Lt. Elmer J. McMahon ES	TBD

** Staff have been considering opportunities for providing a more streamlined process for districts that are extending the useful life of existing school facilities that are capable of continuing to support delivery of the educational program. As part of this, staff are working with two districts considering a major repair of their facility to understand what effect, if any, overlapping eligibility period requirements with consultant selection will have on the overall schedule. Staff will be considering modifications to the feasibility study and schematic design requirements to better align the MSBA required submittals with the scope of the project. Staff are also considering the potential of consolidating the board authorizations through the use of staff updates and presentations at Facilities Assessment Subcommittees.*

Designer Selection

After a district has selected and executed a contract with an OPM, the district selects a Designer utilizing either a local designer selection process for projects under \$5 million or the MSBA’s Designer Selection Panel (“DSP”) for projects over \$5 million. Since the last report, three districts have completed their Designer selection (shaded in the table below). There are currently six districts in the Capital Pipeline that are in the process of procuring a Designer.

District	School	Anticipated Selection
Cape Cod RSD	Cape Cod RVTHS	May 2016
Attleboro	Attleboro HS	June 2016
Easthampton	Maple ES	June 2016
Lowell	Lowell HS	July 2016
Taunton	Mulcahey ES	July 2016
Middleborough	Middleborough HS	July 2016
Worcester	South High Community School	July 2016
Everett	Keverian School	August 2016
Bristol County	Bristol County Agricultural HS	TBD

For additional information on the selected consultant teams, see Appendix A.

FEASIBILITY STUDY

Once a district has procured an OPM and Designer, the district and the district’s consultants must complete two Feasibility Study submittals, the Preliminary Design Program and the Preferred Schematic Report, prior to Board consideration to proceed into Schematic Design. Based on the most recent data and schedules provided to the MSBA by districts, the MSBA anticipates that seven districts will present their preferred schematic designs to the Board at the upcoming July, September, and November Board Meetings.

District	School	Anticipated PS Board Date
Bourne	Peebles ES	July 20, 2016
Somerville	Somerville HS	July 20, 2016
Lynn	Pickering MS	September 28, 2016
Millis	Clyde F. Brown ES	September 28, 2016
Ipswich	Winthrop ES	November 9, 2016
Westport	Westport MS	November 9, 2016
Waltham	Waltham HS	November 9, 2016

SCHEMATIC DESIGN

Prior to consideration by the Board for Project Scope and Budget Agreement authorization, a district must submit a Schematic Design to the MSBA for review. Based on the most recent data and schedules provided to the MSBA by districts, the MSBA anticipates that seven districts will appear before the Board for Project Scope and Budget Agreement authorization at the upcoming July, September, and November Board Meetings.

District	School	Anticipated PS&B Board Date
Hanover	Sylvester ES	July 20, 2016
Needham	Hillside ES	July 20,2016
Quincy	Sterling MS	July 20,2016
Amherst	Wildwood ES	September 28, 2016
Newton	Cabot ES	September 28,2016
Boston	Josiah Quincy Upper School	November 9, 2016
Bourne	Peebles ES	November 9, 2016

COMMISSIONING

The MSBA assigns a Commissioning Consultant after a district has secured local funding for the Board approved project. Since the last report, the MSBA has assigned Commissioning Consultants to two additional projects presented in the table below.

District	School	Program	Estimated Const. Cost (million)	Commissioning Consultant	Contract Amount
Dedham	Dedham Early Childhood Education Center	Core	\$26.19	Symmec, Maini & McKee	\$66,794
Stoughton	Stoughton High School	Core	\$97.23	Fitzemeyer & Tocci	\$167,387

To date, the MSBA has executed 368 Commissioning Consultant contracts, totaling \$26.4 million. To date, 220 contracts have been completed.

The table below represents the status of commissioning assignments sorted by the fiscal year in which the commissioning work orders were issued.

Fiscal Year	No. Work Orders Issued	Value of Work Orders Issued	Total Invoiced	Percent Complete
FY10	31	\$4,231,376	\$4,273,277	100%
FY11	95	\$6,132,890	\$6,057,676	99%
FY12	52	\$4,450,761	\$4,359,877	98%
FY13	55	\$3,364,697	\$3,191,477	95%
FY14	47	\$2,604,062	\$1,973,508	76%
FY15	44	\$2,277,711	\$1,080,474	47%
FY16	44	\$3,385,137	\$323,178	10%

DESIGN DEVELOPMENT

After a district has secured local funding and has entered into a Project Funding Agreement (“PFA”) with the MSBA, the district enters into the Design Development Phase. Currently, there are 39 projects in the Design Development Phase with a total estimated construction cost of approximately \$767.9 million. Of those 39 projects, 26 are ARP projects and 13 are Core Program Projects. The 13 Core Program Projects in Design Development have a total estimated construction cost of approximately \$711.4 million and are listed below.

Elementary School Districts	Middle School Districts	High School Districts	Other Grade Configurations
Carver (PK-5) Dedham (PK-K) Granby (K-6) Hopkinton (PK-1) Narragansett RSD (PK-5) New Bedford (PK-5) Woburn (K-5)	Beverly (5-8) Westborough (7-8)	Billerica (9-12) Mount Greylock RSD (9-12) Stoughton (9-12)	Brookline (K-8)

District Design Submittals

During Design Development, districts submit three design submittals (Design Development, 60% Construction Documents, and 90% Construction Documents) for MSBA review. MSBA staff review documents to ensure project is still in compliance with the PFA. The chart below indicates the number of reviews by type and by fiscal year.

Fiscal Year	DD Reviews	60% Reviews	90% Reviews	Total Reviews
2010	5	0	0	5
2011	21	24	20	65
2012	12	24	28	64
2013	20	20	19	59
2014	15	13	14	42
2015	6	12	13	31
2016	10	10	8	28
Totals	89	103	102	294

SUMMARY OF BID DATA

Based on the most recent data and schedules provided by the districts, the MSBA anticipates 14 projects will bid in 2016, and three projects will bid in 2017.

Year	Number of Projects	Design Basis for Enrollment	Project Budget	Construction Budget
2016	14	8,150	\$811.75 M	\$665.06 M
2017	3	2,875	\$332.64 M	\$264.13 M
Totals	17	11,025	\$1.14 B	\$0.93 B

Note: These numbers are based on preliminary information received from the District and are subject to further review and calculation.

Anticipated Bids in 2016:

- July – Boston (CMR), New Bedford (DBB), Pittsfield (CMR)

For additional information on each of these projects, see Appendix B.

CONSTRUCTION

When a district issues a Notice to Proceed, the project is advanced to the Construction Phase. Currently, there are 51 projects in the Construction Phase with a total estimated construction cost of \$1.08 billion. Of those 51 projects, 32 are ARP projects, one is a waitlist project, and 18 are Core Program Projects. This does not include the 39 projects that have reached substantial completion and are currently in the Building Complete Phase. The 18 Core Program Projects have a total estimated construction cost of \$1.01 billion and are listed below.

Elementary School Districts	Middle and Middle/High School Districts	High School Districts	Other Grade Configurations
Gloucester (K-5) Milford (3-5) Northborough (K-5) Westfield* (K-5)	<u>Middle School Districts</u> Chelsea (5-8) Peabody (6-8) Scituate (6-8) <u>Middle/High School Districts</u> Boston - Dearborn MS (6-12) Winthrop (6-12)	North Middlesex RSD (9-12) Pittsfield (9-12) Plymouth (9-12) Provincetown (9-12) Winchester (9-12)	Abington (PK; 5-12) Haverhill (K-8) Holbrook (PK-12) Worcester (PK-6)

**Note: Westfield, Abner Gibbs Elementary School, stopped construction in December of 2012 due to a preliminary injunction based upon project site status as Article 97 "Protected Land".*

Amendment to the Project Funding Agreement (PFA)

Upon receipt of construction bids or the execution of a GMP, a district submits the Contractor’s Schedule of Values to the MSBA. MSBA staff and the district collaborate to reconcile the actual construction costs against the estimated construction budget and an amendment to the PFA is executed to reflect bid costs. The chart, shown below, is the number of amendments to PFA’s, listed by fiscal year.

Fiscal Year	Total Amendments
FY2012	30
FY2013	31
FY2014	31
FY2015	17
FY2016*	21

**Executed PFA Amendments as of June 29, 2016.*

Substantial Completion

Thirteen projects are scheduled to achieve substantial completion in 2016. To date, five projects (shaded below) have achieved substantial completion.

Project	Enrollment	Contractor	OPM	Designer	Est. Substantial Completion Date	Actual Substantial Completion Date	Est. Actual Difference (days)
Newton Angier	465	W.T. Rich	Joslin, Lesser + Associates Inc.	DiNisco Design Partnership	18-Dec-15	5-Jan-16	-18
Wachusett Mountview MS	800	CTA Construction, Inc.	Gary Kaczmarek	Lamoureux Pagano & Assoc. Inc.	19-Apr-16	11-Apr-16	8
Lynn Thurgood Marshall MS	1100	Walsh Bros.	Joslin, Lesser + Associates Inc.	Raymond Design	6-Jun-16	20-Apr-16	47
Peabody J. Henry Higgins MS	1340	Bacon-Agostini Construction (JV)	Daedalus	DiNisco	27-May-16	TBD	0
Athol-Royalston RSD Riverbend ES	545	Fontaine Brothers	SMMA	Mount Vernon Group	14-Jun-16	13-Jun-16	1
Lunenburg Jr. HS	820	Shawmut Design	Joslin, Lesser + Associates Inc.	Tappe Associates	30-Jun-16	24-May-16	37
Winthrop Jr/Sr HS	970	Gilbane	Skanska	HMFH	30-Jun-16	TBD	0
Gloucester West Parish ES	355	W.T. Rich	KBA	Dore & Whittier	15-Jul-16	TBD	0
Milford Woodland ES	985	Shawmut Design	Joslin, Lesser + Associates Inc.	HMFH	28-Jul-16	TBD	0
New Bedford Taylor at Sea Lab	284	M. O'Connor	ACG	Mount Vernon Group	29-Jul-16	TBD	0
Northborough Lincoln Street ES	270	Brait Bros.	Collier	Lamoureux Pagano & Assoc. Inc.	1-Sep-16	TBD	0
Provincetown Provincetown HS	118	E. Amanti & Sons and Capeway Roofing Systems	Atlantic Construction and Management	Raymond Design	31-Oct-16	TBD	0
Haverhill Caleb Hunking MS	1005	Shawmut Design	Joslin, Lesser + Associates Inc.	JCJ Architecture	30-Dec-16	TBD	0

For additional information on the construction status for each of these projects, see Appendix C.

ACCELERATED REPAIR PROGRAM

Currently, there are a total of 98 districts, representing 214 projects, either active or completed in ARP. All new information that has been updated since the last report is italicized.

Repair Program	Number of Districts	Number of Projects	Total Project Budgets	Maximum Facility Grants	Number of Projects Final Audit Approved
<i>2016 Accelerated</i>	25	43	-	-	0
2015 Accelerated	23*	42*	\$133,605,128	\$90,292,864	0
	1	1	-	-	0
2014 Accelerated	34	47	\$108,410,084	\$65,388,035	1
2013 Accelerated	25	45	\$94,650,790	\$54,662,711	20
2012 Accelerated	24	36	\$63,009,653	\$38,267,952	30
Green	93	189	\$366,649,226	\$222,889,218	181

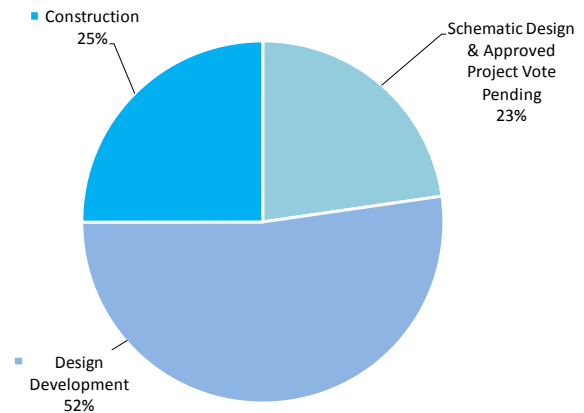
*Totals reflect projects approved for Project Funding Agreements as of the May 25, 2016 Board of Directors' Meeting.

2016 Accelerated Repair Program

- *Invitations – 25 districts, representing 43 projects*
 - *Scope includes 22 roofs, 16 windows/doors, and 13 boilers*

2015 Accelerated Repair Program

- *Invitations – 24 districts, representing 44 projects*
 - *Scope includes 22 roofs, 26 windows/doors, and nine boilers*
- *SOI Removal – one project*
- *Approved for Project Funding Agreements – 23 districts, representing 42 projects*
- *Total Project Budgets - \$133,605,128*
- *MSBA Total Facilities Grants - \$90,292,864*
- *One district, representing one project, will be seeking PFA approval at the July 20, 2016 Board of Director's Meeting*
- *11 of 13 projects reporting to bid within estimated budgets*

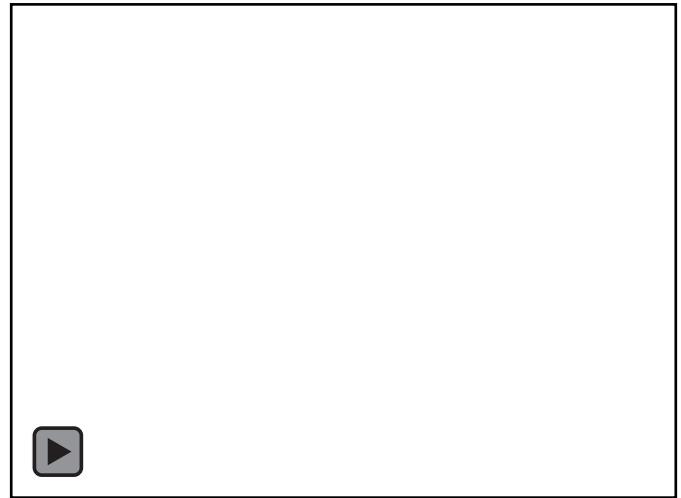


2015 ARP Status Chart

2014 Accelerated Repair Program

- *Invitations – 36 districts, representing 51 projects*
- *SOI Removal – two districts, representing four projects*

- Current 2014 ARP projects – 34 districts, representing 47 projects
 - Scope includes 20 roofs, 25 windows/doors, and 13 boilers
- Approved for Project Funding Agreements – 34 districts, representing 47 projects
- Total Project Budgets - \$108,410,084
- MSBA Total Facilities Grants - \$65,388,035
- Four districts, representing six projects, required schedule extensions following PFA approval
- *89% of reporting projects bid within estimated budget*



2014 ARP Status Chart

2013 Accelerated Repair Program

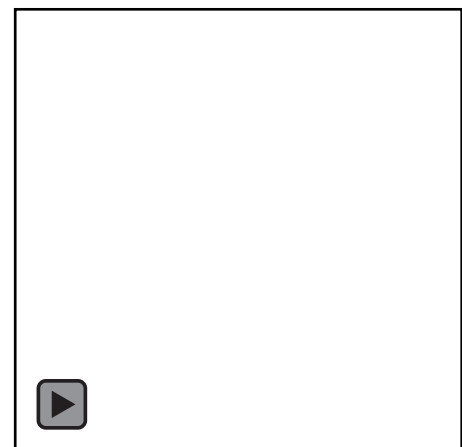
- Invitations – 28 districts, representing 50 projects
- SOI Removals – four districts, representing five projects
- Approved for Project Funding Agreements – 26 districts, representing 47 projects
- Active Projects – 25 districts, representing 45 projects
 - Scope includes 30 roofs, 13 windows/doors, and seven boilers
- Total Project Budgets – \$94,650,790
- MSBA Total Facilities Grants – \$54,662,711
- Four districts, representing seven projects, required schedule extensions following PFA approval
- 82% of projects bid within estimated budget
- *43% of projects have completed Final Audit*



2013 ARP Status Chart

2012 Accelerated Repair Program

- Invitations – 27 districts, representing 39 projects
- SOI Removals – three districts, representing three projects
- Approved Project Funding Agreements – 24 districts, representing 36 projects
 - Scope includes 21 roofs, 11 windows/doors, and seven boilers
- Total Project Budgets – \$63,009,653
- MSBA Total Facilities Grants – \$38,267,952
- Five districts, representing nine projects, required schedule extensions following PFA approval
- 86% of projects bid within estimated budget
- *83% of projects have completed Final Audit*



2012 ARP Status Chart

Status of Green Repair Program

The Green Repair Program resulted in PFA authorizations totaling \$366,649,226 in Total Project Costs and \$222,889,218 in MSBA grants. Of the 189 projects, 181 have been approved for final grant payments. The eight projects that were not previously approved for final grant payments are substantially complete and require Final Audit.

2015 Accelerated Repair Projects – Construction Estimate vs. 2016-2017

- 37 of 43 projects are scheduled to be bid by August 2016.
- Staff reported previously on the shaded projects below.
- Staff added five new projects to the chart below.
- 11 of 13 reported projects bid within the estimated budget.

					Total	\$32,081,389	\$25,052,398	\$7,028,991	-	\$4,307,194
District	School	Scope	Project Type	Bid Date	Construction Estimate **	Bid Amount **	Variance from Construction Estimate	Reimbursement Rate	Potential Grant Variance *	
Leicester	Leicester HS	Roof	DBB	Feb-16	\$2,097,427	\$1,237,000	\$860,427	59.21%	\$509,459	
Worcester	Grafton Street School	Windows/Doors Boiler	DBB	Mar-16	\$3,470,847	\$2,972,000	\$498,847	78.95%	\$393,840	
New Bedford	Alfred J. Gomes School	Windows/Doors	DBB	Mar-16	\$3,794,672	\$2,718,100	\$1,076,572	80.00%	\$856,736	
Blackstone Valley RSD	Blackstone Valley School	Roof – Partial	DBB	Mar-16	\$892,764	\$717,000	\$175,764	53.53%	\$94,086	
New Bedford	Casmir Pulaski School	Windows/Doors / Boiler	DBB	April-16	\$2,274,474	\$1,926,000	\$348,474	79.58%	\$277,316	
New Bedford	Hayden/ McFadden School	Windows/Doors / Boiler	DBB	April-16	\$4,636,946	\$4,202,028	\$434,918	79.58%	\$346,108	
New Bedford	Sgt. Williams H. Carney Academy	Windows/Doors / Boiler	DBB	April-16	\$4,078,525	\$4,208,704	-\$130,179	79.58%	-\$103,596	
Deerfield	Deerfield ES	Roof	DBB	April-16	\$2,341,276	\$1,589,000	\$752,276	52.06%	\$391,635	
Cambridge	Kennedy-Longfellow School	Roof	DBB	April-16	\$2,804,463	\$1,137,000	\$1,667,463	47.03%	\$784,208	
Ludlow	East Street ES	Roof / Partial Boiler	DBB	April-16	\$2,566,953	\$1,792,829	\$774,124	58.37%	\$451,856	
North Reading	E. Ethel Little School	Roof-Partial	DBB	April-16	\$1,414,932	\$1,290,000	\$124,932	46.58%	\$58,193	
Cambridge	Fletcher/Maynard Academy	Boiler	DBB	April-16	\$600,661	\$624,737	-\$24,076	47.03%	\$0	
West Bridgewater	Spring Street School	Roof	DBB	April-16	\$1,107,449	\$638,000	\$469,449	52.69%	\$247,353	

2014 Accelerated Repair Projects – Construction Estimate vs. 2015-2016 Bid Amount

- Staff reported previously on the shaded projects below. No new activity.
- 89% of the 45 reported projects bid within the estimated budget.
- Bidding for the two remaining projects will be complete in 2016.

					Total	\$85,922,778	\$65,468,460	\$20,454,318	-	\$14,365,476
District	School	Scope	Project Type	Bid Date	Construction Estimate **	Bid Amount **	Variance from Construction Estimate	Reimbursement Rate	Potential Grant Variance *	
Quincy	Francis W. Parker ES	Windows/Doors	DBB	Jan-15	\$1,077,920	\$987,000	\$90,920	71.16%	\$64,699	
Quincy	Lincoln-Hancock Community School	Windows/Doors	DBB	Jan-15	\$2,075,113	\$1,479,000	\$596,113	71.16%	\$424,194	
Sudbury	General Nixon ES	Partial Roof/ Partial Windows/Doors	DBB	Feb-15	\$915,204	\$817,466	\$97,738	36.89%	\$36,056	
Lynn	William P. Connery ES	Roof	DBB	Feb-15	\$859,532	\$604,000	\$255,532	78.95%	\$201,743	
Lynn	E. J. Harrington ES	Roof	DBB	Feb-15	\$1,505,681	\$1,217,700	\$287,981	78.95%	\$227,361	

District	School	Scope	Project Type	Bid Date	Construction Estimate **	Bid Amount **	Variance from Construction Estimate	Reimbursement Rate	Potential Grant Variance *
Worcester	Goddard School of Science and Technology	Windows/Doors	DBB	Feb-15	\$4,634,609	\$3,053,000	\$1,581,609	78.95%	\$1,248,680
Worcester	West Tatnuck School	Windows/Doors	DBB	Feb-15	\$1,997,979	\$1,162,019	\$835,960	78.95%	\$659,990
Worcester	Clark Street Community School	Windows/Doors	DBB	Feb-15	\$2,095,791	\$1,465,163	\$630,628	78.95%	\$497,881
Worcester	Union Hill School	Windows/Doors	DBB	Feb-15	\$2,096,895	\$1,618,818	\$478,077	78.95%	\$377,442
Dartmouth	George H. Potter ES	Roof	DBB	Feb-15	\$1,548,538	\$1,283,000	\$265,538	51.84%	\$137,655
Medway	John D. McGovern ES	Windows/Doors	DBB	Feb-15	\$894,675	\$561,886	\$332,789	50.16%	\$166,927
Norwood	Cornelius M. Callahan ES	Boiler	DBB	Mar-15	\$356,939	\$224,171	\$132,768	50.58%	\$67,154
Greenfield	Green River School	Roof, Windows/Doors	DBB	Mar-15	\$1,739,286	\$1,005,890	\$733,396	77.47%	\$568,162
Springfield	Kensington International School	Windows/Doors	DBB	Mar-15	\$779,500	\$832,500	-\$53,000	80.00%	\$0
Wellesley	Wellesley MS	Windows/Doors	DBB	Mar-15	\$3,827,871	\$2,752,500	\$1,075,371	31.00%	\$333,365
Tyngsborough	Tyngsborough HS	Roof, Boiler	DBB	Mar-15	\$3,282,118	\$1,964,300	\$1,317,818	52.89%	\$696,994
Middleton	Fuller Meadow ES	Partial Roof	DBB	Apr-15	\$1,257,849	\$906,800	\$351,049	46.37%	\$162,781
Northampton	Leeds ES	Partial Roof	DBB	Apr-15	\$540,900	\$401,550	\$139,350	56.26%	\$78,398
Northampton	R. K. Finn Ryan Road School	Partial Roof	DBB	Apr-15	\$851,639	\$501,520	\$350,119	56.26%	\$196,977
North Attleborough	Roosevelt Avenue ES	Boiler	DBB	Apr-15	\$303,623	\$265,667	\$37,956	53.53%	\$20,318
Southern Berkshire RSD	Mount Everett RHS	Roof, Boiler	DBB	Apr-15	\$6,376,974	\$4,806,662	\$1,570,312	39.21%	\$615,719
Leominster	Northwest ES	Roof	DBB	May-15	\$2,693,028	\$1,805,000	\$888,028	71.96%	\$639,025
Tri-County RSD	Tri-County RVTHS	Boiler	DBB	Jun-15	\$729,259	\$494,131	\$235,128	51.42%	\$120,903
Auburn	Auburn MS	Roof, Partial Boiler	DBB	Jun-15	\$1,757,394	\$1,371,393	\$386,001	54.16%	\$209,058
Auburn	Bryn Mawr ES	Roof	DBB	Jun-15	\$671,935	\$578,000	\$93,935	54.16%	\$50,875
South Shore VT RSD	South Shore VTRHS	Boiler	DBB	Aug-15	\$519,808	\$354,200	\$165,608	54.16%	\$89,693
Stoughton	Joseph H Gibbons ES	Roof Window/Door	DBB	Sep-15	\$2,740,109	\$1,914,220	\$825,889	\$54.16	\$447,301
Gardner	Elm Street School	Boiler Window/Door	DBB	Sep-15	\$3,509,176	\$2,599,000	\$910,176	\$78.95	\$718,584
Brockton	Brookfield ES	Roof	DBB	Oct-15	\$3,167,788	\$1,838,297	\$1,329,491	78.95%	\$1,049,633
Orleans	Orleans ES	Partial Window/Door	DBB	Oct-15	\$872,628	\$969,480	-\$96,852	36.68%	\$0
Randolph	J.F. Kennedy ES	Windows/Doors	DBB	Nov-15	\$2,079,590	\$2,031,583	\$48,007	74.74%	\$35,880
Brockton	Gilmore School	Roof / Boiler	DBB	Nov-15	\$2,296,063	\$1,375,989	\$920,074	78.95%	\$726,398
Brockton	Barrett Russell School	Partial Window	DBB	Nov-15	\$1,626,472	\$1,144,000	\$482,472	78.95%	\$380,912
Brockton	Ashfield MS	Roof / Boiler	DBB	Nov-15	\$2,928,855	\$2,061,132	\$867,723	78.95%	\$685,067
Randolph	Randolph HS	Partial Window/Door	DBB	Nov-15	\$4,461,242	\$2,428,015	\$2,033,227	74.74%	\$1,519,634
Springfield	J.F. Kennedy MS	Windows/Doors	DBB	Nov-15	\$2,229,800	\$3,732,000	-\$1,502,200	80.00%	\$0
Franklin County	Franklin County Tech HS	Windows/Doors	DBB	Nov-15	\$1,711,460	\$1,656,723	\$54,737	73.89%	\$40,445
Wayland	Claypit Hill School	Windows/Doors	DBB	Dec-15	\$1,299,997	\$1,355,000	-\$55,003	35.42%	\$0
Melrose	Herbert Clark Hoover ES	Windows/Doors	DBB	Dec-15	\$1,090,827	\$734,000	\$356,827	51.42%	\$183,480
Gill-Montague RSD	Sheffield ES	Partial Window/Doors	DBB	Dec-15	\$865,075	\$925,425	-\$60,350	76.00%	\$0
Falmouth	Lawrence School	Windows/Doors	DBB	Jan-16	\$3,412,965	\$2,782,835	\$630,130	37.95%	\$239,134
Hudson	Mulready ES	Partial Roof	DBB	Feb-16	\$1,143,284	\$944,300	\$198,984	54.16%	\$107,770
Bellingham	South ES	Roof	DBB	Feb-16	\$984,816	\$588,400	\$396,416	52.69%	\$208,872
Peabody	John E. McCarthy Memorial School	Roof / Window/Doors	DBB	Feb-16	\$4,112,571	\$3,874,725	\$237,846	54.79%	\$130,316
Medfield	Ralph Wheelock School	Boiler	DBB	April-16	\$374,400	\$347,270	\$27,130	39.84%	\$10,928

*These numbers are based on preliminary information received from the district and are subject to further review and calculation.

**The construction estimate and bid amount do not include pre-construction services and alternatives.

Accelerated Repair Projects – Schedule Extension Update

The MSBA has granted districts conditional extensions to their PFAs pending compliance with the following stipulations:

- The district must submit a detailed, revised, construction timeline that explains how the work will be completed at each school; and
- Any costs that are related to a district requesting an extension to the construction schedule will be the sole responsibility of the district and those costs are categorically ineligible for reimbursement by the MSBA.

Schedule delays for these districts can be attributed to local funding issues, lead time for windows, and construction delays on site. In no event have the extended schedules resulted in an increase to the Estimated Maximum Total Facilities Grant as authorized by the Board.

Six of the 47, 2014 Accelerated Repair Projects did not meet their anticipated construction completion dates in 2015. These projects have revised construction schedules and are scheduled to be completed in 2016. Staff has reported previously on the six shaded projects listed below.

As of this report, staff notes that there is no new activity.

District	School	Scope	Original Construction Completion Date	Updated Construction Completion Date	Reason for Schedule Extension
Orleans	Orleans ES	Partial Window/Door	8/25/2015	8/29/2016	The District and its consultants have determined that the estimated lead time for windows requires construction to be scheduled for 2016.
Springfield	John F. Kennedy MS	Window/Door	12/22/2015	10/28/2016	The District and its consultants have determined that the estimated lead time for windows requires construction to be scheduled for 2016.
Brockton	Ashfield MS	Roof/Boiler	8/31/2015	7/11/2016	The District and its consultants have determined that the bidding for construction in 2016 would better serve the project budget and existing facilities.
Brockton	Gilmore School	Roof/Boiler	8/31/2015	7/11/2016	The District and its consultants have determined that the bidding for construction in 2016 would better serve the project budget and existing facilities.
Medfield	Ralph Wheelock School	Boiler	1/6/2016	8/31/2016	The District and its consultants have determined that the bidding for construction in 2016 would better serve the project budget and existing facility.
Springfield	Kensington International School	Window/Door	11/2/15	8/19/16	The District and its consultants have determined that the estimated lead time for windows requires construction to be scheduled for 2016.

PROJECT VARIANCES

Core Program – Total Project Budget Update

Upon receiving the Board’s approval of the Project Scope and Budget, the MSBA and participating districts enter into a Project Funding Agreement, which establishes the Total Project Budget and the Estimated Maximum Total Facilities Grant for an approved project. Staff has reported on budget increases for the 15 projects shaded below at previous Board Meetings. In no event has the increase in budget resulted in an increase to the Estimated Maximum Total Facilities Grant as authorized by the Board.

As of this report, staff notes that there is no new activity.

District	School	Scope	Project Funding Agreement		PFA Bid Amendment/ Final Audit		Reason for Increase to Total Project Budget
			Total Project Budget	Total Maximum Facilities Grant	Total Project Budget	Total Maximum Facilities Grant	
Andover	Bancroft ES	New	\$44,659,837	\$16,773,753	\$50,374,837	\$16,575,965	The District has appropriated additional funds to cover the costs associated with increased construction costs and additional contingencies for litigation/settlement costs and other ineligible costs.
Burlington	Marshall Simonds MS	Add/Reno	\$32,865,272	\$17,143,365	\$34,221,929	\$15,362,127	The District appropriated at its May 2012 annual town meeting through Articles 18: 19, additional funds for the costs associated with the construction of the new field complex and field lighting replacement.
Essex North Shore Agricultural & Technical School District	Essex North Shore Agricultural & Technical HS	New	\$125,000,000	\$77,500,000	\$133,770,000	\$77,500,000	The Board was informed at the March 30, 2011 meeting that the Total Project Budget had increased due to additional ineligible scope that would be funded by DCAM.
			\$125,000,000	\$77,500,000	\$134,501,368	\$77,500,000	The District has appropriated additional funds to cover the costs associated with increased construction costs for horse tack barn renovations.
Lexington	Joseph Estabrook ES	New	\$40,792,248	\$12,250,739	\$43,392,248	\$12,148,491	The District has executed a GMP that exceeds the Construction Budget of the PFA. The District has appropriated additional funds to cover the costs associated with increased construction costs and additional contingencies.
North Reading	North Reading MS/HS	Add/Reno	\$107,727,074	\$49,323,123	\$123,227,074	\$49,323,123	This is a CMR project. The estimated, reconciled construction costs tracked over budget at DD (\$9,746,655 over), 60% (\$4,655,965 over), and 90% (\$15,136,846 over). A Town override vote in March 2013 obtained an additional \$15,500,000 in local funding to proceed.
Revere	Staff Sergeant James J. Hill ES	New	\$45,402,396	\$29,551,048	45,402,396	\$29,551,048	At Project Scope and Budget, the Total Project Budget was approved at \$44,382,396. The City of Revere has increased the land acquisition budget. Therefore, the projected total project budget at PFA has increased to \$45,402,396. Note that the MSBA grant has not changed since the Project Scope and Budget Agreement.
Somerville	East Somerville Community School	Add/Reno	\$33,185,258	\$15,237,996	\$38,006,621	\$15,237,996	At the March 28, 2012 Board Meeting, the Board approved an amendment to the PFA and a \$6.25M District loan.
Uxbridge	Uxbridge HS	New	\$43,000,000	\$22,362,328	\$44,986,479	\$22,362,328	The District has appropriated additional funds to cover the costs associated with the construction of athletic fields originally included in the PFA but which were not included in the bid as the District’s construction contract would have exceeded the budget.
Norfolk County Agricultural	Norfolk County Agricultural HS	Add/Reno	\$28,552,385	\$15,369,712	\$30,589,078	\$13,867,050	The District has executed a Tender Agreement and Completion Agreement Contract, increasing its Total Project Budget, following the termination of its original construction contract.
Northborough	Lincoln Street ES	Add/Reno	\$25,530,553	\$10,407,408	\$25,530,553	\$10,407,408	The MSBA Board Approved Total Project Budget increased by \$60,400 from \$25,470,153 to \$25,530,553 due to the addition of an alternate, for a new ball field added at the District’s request.
Sutton	Sutton MS	Add/Reno	\$59,945,474	\$29,843,511	\$60,130,536	\$26,528,921	The District has executed a Tender Agreement and Completion Agreement Contract, increasing its Total Project Budget, following the termination of its original construction contract.
Weston	Field ES	New	\$31,504,146	\$8,310,510	\$32,654,146	\$8,105,549	District-approved Construction Change Orders exceeded available contingency amount.
Winchester	Winchester HS	Add/Reno	\$129,923,146	\$44,493,270	TBD*	TBD*	The MSBA Board Approved total Project Budget increased due to a construction change order for additional soil abatements at Skillings Field. Note that the increased Total Project Budget will not increase the Maximum Total Facilities Grant.
Winthrop	Winthrop MS/HS	New	\$81,818,740	\$42,582,841	\$81,432,986	\$41,249,005	The MSBA Board Approved Total Project Budget increased due to revised FEMA flood plain requirements which necessitated the elevation of the new building to be raised. Note that the increased Total Project Budget will not increase the Maximum Total Facilities Grant.
Woburn**	Wyman-Hurld ES	New	\$33,705,396	\$14,387,427	TBD*	TBD*	<i>The District had completed a project review with its Conservation Commission and an Order of conditions was issued on June 12, 2015. A neighborhood group has appealed this Order and it is now under review by DEP. The District has experienced delays in completing its City Council vote for its appropriation and incurred additional costs.</i>

*PFA Bid Amendment has not been developed to calculate a revised Total Facilities Grant amount. The Total Maximum Facilities Grant will not exceed the Board authorized amount in the PFA but, upon review, may decrease.

**Pending an executed Project Funding Agreement.

APPENDIX A
PROJECT STATUS LIST

Date of Report: 6/29/2016

Total Projects: 369

MSBA ID	District	School	Project Phase	Project Type	Project Scope	Procurement Type	OPM	Designer	CM/GC	Commissioning Consultant
200800010405	Abington	Frolio Middle School	Construction	Core Program	New Construction	DBB	Knight, Bagge & Anderson Inc.	Ai3 Architects LLC	Brait Builders Corp.	Horizon Engineering Associates, LLP
201600050303	Agawam	Agawam Middle School	OPM Selection	Accelerated Repair	Boiler	-	-	-	-	-
201300080050	Amherst	Wildwood Elementary	Schematic Design	Core Program	New Construction	-	Joslin, Lesser + Associates Inc.	JCJ Architecture, PC	-	-
200800090003	Andover	Bancroft Elementary School	Closeout	Core Program	New Construction	CM@R	Dore & Whittier Management Partners, Inc.	Symmes Maini & McKee Associates, Inc.	Skanska USA Building, Inc.	Sebesta Blomberg & Associates, Inc.
201500100505	Arlington	Arlington High	Eligibility Period	Core Program	-	-	-	-	-	-
201300140405	Ashland	Ashland Middle	Final Audit Approved	Accelerated Repair	Roof	DBB	Arcadis U.S., Inc.	Raymond Design Associates, Inc.	Gibson Roofs, Inc.	Gale Associates, Inc.
201300140010	Ashland	Henry E Warren Elem	Final Audit Approved	Accelerated Repair	Roof	DBB	Arcadis U.S., Inc.	Raymond Design Associates, Inc.	MDM Engineering	Gale Associates, Inc.
200908010605	Assabet Valley	Assabet Valley Regional Technical High School	Building Complete	Core Program	Repair	DBB	Colliers International	Perkins Eastman/DPC	CTA Construction Co., Inc.	Symmes, Maini & McKee Associates
200906150020	Athol-Royalston	Riverbend School	Building Complete	Core Program	New Construction	DBB	Symmes Maini & McKee Associates	Mount Vernon Group Architects, Inc.	Fontaine Brothers, Inc.	Colliers International
201400160505	Attleboro	Attleboro High	Feasibility Study	Core Program	-	-	Skanska USA Building, Inc	-	-	-
200800170305	Auburn	Auburn Middle	Building Complete	Core Program	New Construction	CM@R	Skanska USA Building, Inc	Lamoureux Pagano & Associates, Inc.	Fontaine Brothers, Inc.	WSP USA
201400170305	Auburn	Auburn Middle	Closeout	Accelerated Repair	Roof, Boiler	-	Skanska USA Building, Inc	Dietz & Company Architects, Inc.	-	Horizon Engineering Associates, LLP Thompson & Lichtner Co., Inc.
201400170010	Auburn	Bryn Mawr	Closeout	Accelerated Repair	Roof	-	Skanska USA Building, Inc	Dietz & Company Architects, Inc.	-	Thompson & Lichtner Co., Inc.
201600170015	Auburn	Pakachoag	OPM Selection	Accelerated Repair	Roof	-	-	-	-	-
200806160505	Ayer-Shirley	Ayer-Shirley Regional Middle/High School	Building Complete	Core Program	Addition / Renovation	CM@R	Dore and Whittier Architects, Inc.	Symmes Maini & McKee Associates, Inc.	Consigli Construction Company, Inc.	WSP USA
201106160002G	Ayer-Shirley	Page Hilltop School	-	Green Repair	-	DBB	-	-	-	-
201300200010	Barnstable	Barnstable United Elementary School	Final Audit Approved	Accelerated Repair	Roof	DBB	exPERTcon, Inc.	Gale Associates, Inc.	Capeway Roofing Systems, Inc.	Russo Barr Associates, Inc.
201100200005G	Barnstable	West Barnstable Elem	Final Audit Approved	Green Repair	Windows / Doors	DBB	PMA Construction Services	-	Paul J. Rogan Co., Inc.	CBI Consulting Inc.
201200250009	Bellingham	Clara Macy Elementary	-	Core Program	-	-	-	-	-	-
201400250020	Bellingham	South Elem	Construction	Accelerated Repair	Roof	-	Atlantic Construction and Management, Inc.	-	Silktown Roofing	Building Enclosure Associates, LLC
201500260505	Belmont	Belmont High	Eligibility Period	Core Program	-	-	-	-	-	-
201100260015G	Belmont	Daniel Butler	-	Green Repair	-	DBB	-	-	-	-
200800260035	Belmont	Roger Wellington Elementary School	Final Audit Approved	Core Program	New Construction	CM@R	PMA Construction Services	Jonathan Levi Architects LLC	Skanska USA Building, Inc.	Colliers International
200806200505	Berlin-Boylston	Tahanto Regional High School	Closeout	Core Program	New Construction	DBB	PMA Construction Services	HMFH Architects, Inc.	CTA Construction Co., Inc.	Colliers International
200800300505	Beverly	Beverly High School	Final Audit Approved	Core Program	Addition / Renovation	DBB	HEERY	Mount Vernon Group Architects, Inc.	CTA Ventures	-
201300300305	Beverly	Briscoe Middle	Design Development	Core Program	New Construction	CM@R	HEERY	Ai3 Architects LLC	-	Bard, Rao + Athanas Consulting Engineers, LLC
201300310505	Billerica	Billerica Memorial High School	Design Development	Core Program	New Construction	-	KV Associates, Inc.	Perkins+Will	-	RDK Engineers
201508050605	Blackstone Valley Reg	Blackstone Valley	Construction	Accelerated Repair	Roof	-	Watermark Environmental, Inc.	Russo Barr Associates, Inc.	Silktown Roofing	Gale Associates, Inc.

201206220505	Blackstone-Millville	Blackstone Millville RHS	Closeout	Accelerated Repair	Roof	DBB	Arcadis U.S., Inc.	DiMarinisi & Wolfe Architects Urban Designers -		Gale Associates, Inc.
201306220010	Blackstone-Millville	Millville Elem	Closeout	Accelerated Repair	Roof	DBB	Pinck & Co., Inc.	CBI Consulting Inc.	MDM Engineering	Simpson Gumpertz & Heger Inc.
201508060605	Blue Hills Voc	Blue Hills Reg Voc Tech	Eligibility Period	Core Program	Addition / Renovation		-	-	-	-
201500350651	Boston	Dorchester Academy	Approved Project Vote Pending	Accelerated Repair	Windows / Doors		P3 Inc.	Dietz & Company Architects, Inc.	-	Simpson Gumpertz & Heger Inc.
201300350546	Boston	Boston Arts Academy	Feasibility Study	Core Program			PMA Construction Services	-	-	-
201600350560	Boston	Boston Latin	OPM Selection	Accelerated Repair	Boiler		-	-	-	-
201500350052	Boston	Charles Sumner	Approved Project Vote Pending	Accelerated Repair	Windows / Doors		P3 Inc.	Dietz & Company Architects, Inc.	-	Simpson Gumpertz & Heger Inc.
201500350020	Boston	Curley K-8 School	Approved Project Vote Pending	Accelerated Repair	Windows / Doors		P3 Inc.	Dietz & Company Architects, Inc.	-	Simpson Gumpertz & Heger Inc.
201500350072	Boston	David A Ellis	Approved Project Vote Pending	Accelerated Repair	Windows / Doors		P3 Inc.	Dietz & Company Architects, Inc.	-	Simpson Gumpertz & Heger Inc.
201500350080	Boston	Donald Mckay	Approved Project Vote Pending	Accelerated Repair	Windows / Doors		P3 Inc.	Dietz & Company Architects, Inc.	-	Simpson Gumpertz & Heger Inc.
200800350415	Boston	Grover Cleveland		Core Program			-	-	-	-
201500350415	Boston	Grover Cleveland	Approved Project Vote Pending	Accelerated Repair	Windows / Doors		P3 Inc.	Dietz & Company Architects, Inc.	-	Simpson Gumpertz & Heger Inc.
201000350074	Boston	Henry Dearborn Middle School	Construction	Core Program	New Construction	CM@R	Daedalus Projects Inc	Jonathan Levi Architects LLC	Gilbane Building Company	Symmes, Maini & McKee Associates
201600350146	Boston	James Condon Elem	OPM Selection	Accelerated Repair	Boiler		-	-	-	-
201600350179	Boston	John W McCormack	OPM Selection	Accelerated Repair	Roof		-	-	-	-
201600350268	Boston	Paul A Dever	OPM Selection	Accelerated Repair	Roof		-	-	-	-
201000350565	Boston	Quincy Upper School	Feasibility Study	Core Program			Skanska USA Building, Inc	HMFH Architects, Inc.	-	-
201600350360	Boston	William Ellery Channing	OPM Selection	Accelerated Repair	Boiler		-	-	-	-
201500350380	Boston	Young Achievers	Approved Project Vote Pending	Accelerated Repair	Windows / Doors		P3 Inc.	Dietz & Company Architects, Inc.	-	Simpson Gumpertz & Heger Inc.
201400360010	Bourne	James F Peebles Elem	Feasibility Study	Core Program			Symmes Maini & McKee Associates, Inc.	Flansburgh Associates, Inc.	-	-
201600380013	Boxford	Spofford Pond	OPM Selection	Accelerated Repair	Roof, Windows / Doors		-	-	-	-
201300400305	Braintree	East Middle School	Eligibility Period	Core Program			Hill International Company	Miller Dyer Spears Inc.	-	-
201206250320	Bridgewater-Raynham	Bridgewater Middle School	Closeout	Accelerated Repair	Roof	DBB	Vertex Construction Services	-	-	CBI Consulting Inc.
201206250050	Bridgewater-Raynham	Laliberte Elementary School	Closeout	Accelerated Repair	Roof	DBB	Vertex Construction Services	Raymond Design Associates, Inc.	-	CBI Consulting Inc.
201206250020	Bridgewater-Raynham	Merrill Elementary School	Closeout	Accelerated Repair	Roof	DBB	Vertex Construction Services	Raymond Design Associates, Inc.	-	CBI Consulting Inc.
201409100705	Bristol County Agr	Bristol County Agr High	Designer Selection	Core Program			-	-	-	-
201400440421	Brockton	Ashfield Middle School	Construction	Accelerated Repair	Roof, Boiler		Architectural Consulting Group, LLC	Tighe & Bond, Inc.	-	Rist-Frost-Shumway Engineering, P.C. Simpson Gumpertz & Heger Inc.
201400440080	Brockton	Barrett Russell School	Construction	Accelerated Repair	Windows / Doors		Architectural Consulting Group, LLC	Tighe & Bond, Inc.	Reliable Roofing and Sheet Metal, LLC	Simpson Gumpertz & Heger Inc.
201400440010	Brockton	Brookfield	Construction	Accelerated Repair	Roof		Architectural Consulting Group, LLC	Tighe & Bond, Inc.	-	Simpson Gumpertz & Heger Inc.
201400440035	Brockton	Gilmore	Construction	Accelerated Repair	Roof, Boiler		Architectural Consulting Group, LLC	Tighe & Bond, Inc.	-	Rist-Frost-Shumway Engineering, P.C. Simpson Gumpertz & Heger Inc.
201100460015	Brookline	Edward Devotion	Design Development	Core Program	Addition / Renovation	CM@R	Anthony Guigli Town Employee	HMFH Architects, Inc.	Shawmut Design and Construction	Consulting Engineering Services, LLC

201500490090	Cambridge	Fletcher/Maynard Academy	Construction	Accelerated Repair	Boiler		Skanska USA Building, Inc	Tai Soo Kim Partners, LLC	-	Fitzmeyer & Tocci Associates, Inc.
201600490090	Cambridge	Fletcher/Maynard Academy	OPM Selection	Accelerated Repair	Roof		-	-	-	-
201500490040	Cambridge	Kennedy-Longfellow	Construction	Accelerated Repair	Roof		Skanska USA Building, Inc	Tai Soo Kim Partners, LLC	-	Thompson & Lichtner Co., Inc.
201200500012	Canton	Lt Peter M Hansen	Closeout	Accelerated Repair	Windows / Doors	DBB	Vertex Construction Services	CSS Architects Incorporated	Lockheed Window Corporations	Simpson Gumpertz & Heger Inc.
201600500012	Canton	Lt Peter M Hansen	OPM Selection	Accelerated Repair	Roof		-	-	-	-
201200500305	Canton	Wm H Galvin Middle	Closeout	Accelerated Repair	Windows / Doors	DBB	Vertex Construction Services	CSS Architects Incorporated	Lockheed Window Corporations	Simpson Gumpertz & Heger Inc.
201408150605	Cape Cod Region Voc Tech	Cape Cod Region Voc Tech	Feasibility Study	Core Program			Colliers International	-	-	-
201600520405	Carver	Carver Middle/High School	OPM Selection	Accelerated Repair	Roof, Windows / Doors, Boiler		-	-	-	-
201300520015	Carver	Carver Elementary School	Design Development	Core Program	New Construction		PMA Construction Services	HMFH Architects, Inc.	-	Symmes, Maini & McKee Associates
200800570050	Chelsea	Clark Avenue School	Construction	Core Program	New Construction	CM@R	Pinck & Co., Inc.	HMFH Architects, Inc.	W. T. Rich Company Inc.	Cannon Design
201500610010	Chicopee	Belcher	Design Development	Accelerated Repair	Roof		Joslin, Lesser + Associates Inc.	Kaestle Boos Associates, Inc.	-	Building Enclosure Associates, LLC
201600610015	Chicopee	Bowe	OPM Selection	Accelerated Repair	Windows / Doors		-	-	-	-
200900610021	Chicopee	Chicopee Academy	Building Complete	Core Program	Renovation	DBB	Arcadis U.S., Inc.	Caolo & Bieniek Associates, Inc.	Fontaine Brothers, Inc.	Symmes, Maini & McKee Associates
201500610310	Chicopee	Fairview Middle	Design Development	Accelerated Repair	Roof		-	Kaestle Boos Associates, Inc.	-	Building Enclosure Associates, LLC
201600610050	Chicopee	Selser	OPM Selection	Accelerated Repair	Roof		-	-	-	-
201400630010	Clarksburg	Clarksburg Elementary	OPM Selection	Core Program			-	-	-	-
200906400505	Concord-Carlisle	Concord-Carlisle Regional High School	Closeout	Core Program	New Construction	CM@R	KV Associates, Inc.	OMR Architects, Inc.	Turner Construction Company	Colliers International
200800710505	Danvers	Danvers High School	Closeout	Core Program	Addition / Renovation	DBB	Construction Monitoring Services, Inc.	DiNisco Design Partnership, Limited	Bacon Construction Co, Inc.	Turner Facilities Management Solutions
201500710032	Danvers	Ivan G Smith	Eligibility Period	Core Program			-	-	-	-
201600720050	Dartmouth	Dartmouth Middle	OPM Selection	Accelerated Repair	Roof		-	-	-	-
201400720030	Dartmouth	George H Potter	Closeout	Accelerated Repair	Roof		Pinck & Co., Inc.	Russo Barr Associates, Inc.	Greenwood Industries, Inc.	Gale Associates, Inc.
201200730005	Dedham	Early Childhood Center	Design Development	Core Program	New Construction	DBB	Construction Monitoring Services, Inc.	Knight, Bagge & Anderson, Inc.	-	Symmes, Maini & McKee Associates
201500740015	Deerfield	Deerfield Elem	Construction	Accelerated Repair	Roof		Pinck & Co., Inc.	Raymond Design Associates, Inc.	-	Russo Barr Associates, Inc.
201506450305	Dennis-Yarmouth	Mattacheese Middle Sch	Eligibility Period				-	-	-	-
201306500005	Dighton-Rehoboth	Dighton Elementary	Final Audit Approved	Accelerated Repair	Roof	DBB	Arcadis U.S., Inc.	Dietz & Company Architects, Inc.	MDM Engineering	Gale Associates, Inc.
201306500305	Dighton-Rehoboth	Dighton Middle School	Closeout	Accelerated Repair	Roof	DBB	Arcadis U.S., Inc.	Dietz & Company Architects, Inc.	MDM Engineering	Gale Associates, Inc.
201306500310	Dighton-Rehoboth	Dorothy L Beckwith	Final Audit Approved	Accelerated Repair	Roof	DBB	Arcadis U.S., Inc.	Dietz & Company Architects, Inc.	Greenwood Industries, Inc.	Gale Associates, Inc.
201106500010G	Dighton-Rehoboth	Palmer River		Green Repair		DBB	-	-	-	-
200800770010	Douglas	Douglas Elementary	Closeout	Core Program	New Construction - Model School	DBB	HEERY	DiNisco Design Partnership, Limited	CTA Construction Co., Inc.	Consulting Engineering Services, LLC
200800770100G	Douglas	Douglas Intermediate Elementary School	Closeout	Green Repair	Roof, Windows / Doors, Boiler	DBB	HEERY	DiNisco Design Partnership, Limited	CTA Construction Co., Inc.	Consulting Engineering Services, LLC
200800790505	Dracut	Dracut Senior High School	Building Complete	Core Program	Addition / Renovation	DBB	Hill International Company	Mount Vernon Group Architects, Inc.	CTA Construction Co., Inc.	RDK Engineers
201000820505	Duxbury	Duxbury High School	Building Complete	Core Program	New Construction - Model School	CM@R	KV Associates, Inc.	Mount Vernon Group Architects, Inc.	Dimeo Construction Company	WSP USA
200900830505	East Bridgewater	East Bridgewater High School	Closeout	Core Program	New Construction - Model School	DBB	Hill International Company	Ai3 Architects LLC	Fontaine Brothers, Inc.	Foreman Building Commissioning, LP
201400860010	Easthampton	Maple	Feasibility Study	Core Program			Colliers International	-	-	-

201300880020	Easton	Moreau Hall	Closeout	Accelerated Repair	Roof	DBB	Skanska USA Building, Inc	Baker/Wohl Architects, Inc.	Capeway Roofing Systems, Inc.	Gale Associates, Inc.
200809130705	Essex Agr Tech	Essex Agricultural and Technical High School	Building Complete	Core Program	New Construction	CM@R	PMA Construction Services	Perkins Eastman/DPC	Gilbane Building Company	Turner Facilities Management Solutions
201400930028	Everett	George Keverian School	Designer Selection	Core Program			-	-	-	-
201500940305	Fairhaven	Hastings Middle	Design Development	Accelerated Repair	Roof		Potomac Capital Advisors	CGKV Architects, Inc.	-	Gale Associates, Inc.
201400950505	Fall River	B M C Durfee High	OPM Selection	Core Program			-	-	-	-
200900950315	Fall River	James Madison Morton Middle School	Final Audit Approved	Core Program	New Construction	DBB	Maguire Group Inc.	Mount Vernon Group Architects, Inc.	J & J Contractors, Inc.	Sebasta Blomberg & Associates, Inc.
201400960405	Falmouth	Lawrence	Construction	Accelerated Repair	Windows / Doors		PMA Construction Services	Civitects PC	GVW, Inc.	Gale Associates, Inc.
200800970016	Fitchburg	Crocker Elementary		Core Program			-	-	-	-
201500990015	Foxborough	Mabelle M Burrell	Eligibility Period	Core Program			-	-	-	-
201501000305	Framingham	Fuller Middle	Eligibility Period				-	-	-	-
200901010505	Franklin	Franklin High School	Building Complete	Core Program	New Construction - Model School	DBB	Daedalus Projects Inc	Ai3 Architects LLC	Bacon-Agostini Construction Joint Venture	Consulting Engineering Services, LLC
201408180605	Franklin County	Franklin County Tech	Construction	Accelerated Repair	Windows / Doors		Colliers International	Habeeb & Associates Architects, Inc.	Gardner Construction & Industrial Services	CBI Consulting Inc.
201401030001	Gardner	Elm Street School	Construction	Accelerated Repair	Windows / Doors, Boiler		Hill International Company	ICON architecture, inc.	Lockheed Window Corporations	Fitzmeyer & Tocci Associates, Inc. Thompson & Lichtner Co., Inc.
201201030505	Gardner	Gardner High	Final Audit Approved	Science Lab Initiative	Addition / Renovation	DBB	Pinck & Co., Inc.	Lamoureux Pagano & Associates, Inc.	Five Star Building Corp.	Fitzmeyer & Tocci Associates, Inc.
201201030405	Gardner	Gardner Middle School	Final Audit Approved	Accelerated Repair	Boiler		Leftfield, LLC	Richard D. Kimball Company, Inc.	Royal Steam Heater Co.	Fitzmeyer & Tocci Associates, Inc.
200801050505	Georgetown	Georgetown Middle/High School	Building Complete	Core Program	Renovation	DBB	Municipal Building Consultants, Inc.	Drummeey Rosane Anderson, Inc.	L.D. Russo, Inc.	WSP USA
200901050010	Georgetown	Penn Brook Elementary School	Building Complete	Core Program	New Construction	DBB	Municipal Building Consultants, Inc.	Drummeey Rosane Anderson, Inc.	Brait Builders Corp.	Rist-Frost-Shumway Engineering, P.C.
201406740050	Gill-Montague	Sheffield Elementary	Construction	Accelerated Repair	Windows / Doors, Boiler		NETCO Construction Project Managers, Inc.	The S/L/A/M Collaborative	Gardner Construction & Industrial Services	CBI Consulting Inc.
201601070505	Gloucester	Gloucester High	OPM Selection	Accelerated Repair	Roof		-	-	-	-
200901070050	Gloucester	West Parish Elementary School	Construction	Core Program	New Construction	CM@R	Knight, Bagge & Anderson Inc.	Dore & Whittier Architects, Inc.	W. T. Rich Company Inc.	Fitzmeyer & Tocci Associates, Inc.
201201110010	Granby	West St	Design Development	Core Program	Addition / Renovation		Colliers International	Jones Whitsett Architects, Inc.	-	Rist-Frost-Shumway Engineering, P.C.
201108230605	Greater Lawrence RVT	Gr Lawrence Reg Voc Tech	Closeout	Core Program	Repair	DBB	Vertex Construction Services	Richard D. Kimball Company, Inc.	E. Amanti & Sons, Inc.	WSP USA
200908280605	Greater Lowell Voc Tec	Greater Lowell Regional Technical High School	Building Complete	Core Program	Addition / Renovation	CM@R	Joslin, Lesser + Associates Inc.	Knight, Bagge & Anderson, Inc.	Consigli Construction Company, Inc.	Horizon Engineering Associates, LLP
201008250605	Greater New Bedford	Greater New Bedford Vocational Technical High School	Closeout	Core Program	Addition / Renovation	DBB	Construction Monitoring Services, Inc.	Drummeey Rosane Anderson, Inc.	Agostini Construction Co., Inc.	Symmes, Maini & McKee Associates
201501140010	Greenfield	Federal	Design Development	Accelerated Repair	Roof, Windows / Doors, Boiler		-	-	-	Colliers International
201401140030	Greenfield	Green River	Closeout	Accelerated Repair	Roof, Windows / Doors, Boiler		Arcadis U.S., Inc.	Baker/Wohl Architects, Inc.	RAC Builders, Inc.	CBI Consulting Inc.
200901140505	Greenfield	Greenfield High School	Building Complete	Core Program	New Construction	CM@R	Construction Monitoring Services, Inc.	Dore & Whittier Architects, Inc.	Shawmut Design and Construction	BVH Integrated Services, P.C.
201106730010G	Groton-Dunstable	Florence Roche School		Green Repair		DBB	-	-	-	-
201106730005G	Groton-Dunstable	Swallow/Union School		Green Repair		DBB	-	-	-	-
201601180005	Halifax	Halifax Elementary	OPM Selection	Accelerated Repair	Roof, Windows / Doors		-	-	-	-
201306750007	Hamilton-Wenham	Bessie Buker Elementary	Final Audit Approved	Accelerated Repair	Boiler	DBB	NETCO Construction Project Managers, Inc.	Habeeb & Associates Architects, Inc.	Multitemp Mechanical Corporation	Colliers International
201306750015	Hamilton-Wenham	Winthrop School	Closeout	Accelerated Repair	Windows / Doors, Boiler	DBB	NETCO Construction Project Managers, Inc.	Habeeb & Associates Architects, Inc.	E. Amanti & Sons, Inc.	CBI Consulting Inc. Colliers International

201406800030	Hampden-Wilbraham	Soule Road		Accelerated Repair	Windows / Doors		exPERTcon, Inc.	The S/L/A/M Collaborative	-	-
201406800305	Hampden-Wilbraham	Thornton Burgess		Accelerated Repair	Windows / Doors		-	-	-	-
201406800310	Hampden-Wilbraham	Wilbraham Middle		Accelerated Repair	Roof		exPERTcon, Inc.	The S/L/A/M Collaborative	-	-
201301220015	Hanover	Sylvester	Schematic Design	Core Program	Addition / Renovation		P3 Inc.	Mount Vernon Group Architects, Inc.	-	-
201101250005G	Harvard	Harvard Elementary		Green Repair		DBB	-	-	-	-
201501250005	Harvard	Harvard Elementary	OPM Selection	Core Program			-	-	-	-
201301270505	Hatfield	Smith Academy	Final Audit Approved	Accelerated Repair	Roof, Windows / Doors	DBB	Hill International Company	Civitects PC	Silktown Roofing	Building Enclosure Associates, LLC
201201280035	Haverhill	Caleb Dustin Hunking	Construction	Core Program	New Construction	CM@R	Joslin, Lesser + Associates Inc.	JCJ Architecture, PC	Shawmut Design and Construction	Colliers International
201101280100G	Haverhill	Consentino	Closeout	Green Repair	Windows / Doors	DBB	Vertex Construction Services	CSS Architects Incorporated	New England Builders & Contractors, Inc.	RDK Engineers Russo Barr Associates, Inc.
201101280085G	Haverhill	John G Whittier	Closeout	Green Repair	Windows / Doors	DBB	Vertex Construction Services	CSS Architects Incorporated	New England Builders & Contractors, Inc.	Russo Barr Associates, Inc.
201101280075G	Haverhill	Tilton	Closeout	Green Repair	Roof	DBB	Vertex Construction Services	CSS Architects Incorporated	Titan Roofing, Inc.	Russo Barr Associates, Inc.
201101280080G	Haverhill	Walnut Square	Closeout	Green Repair	Roof, Windows / Doors	DBB	Vertex Construction Services	CSS Architects Incorporated	Titan Roofing, Inc.	RDK Engineers Russo Barr Associates, Inc.
201001310410	Hingham	Hingham Middle School	Building Complete	Core Program	New Construction - Model School	DBB	Knight, Bagge & Anderson Inc.	Ai3 Architects LLC	Brait Builders Corp.	Foreman Building Commissioning, LP
200801330505	Holbrook	Holbrook Junior-Senior High School	Construction	Core Program	New Construction	CM@R	Symmes Maini & McKee Associates, Inc.	Flansburgh Associates, Inc.	Consigli Construction Company, Inc.	Consulting Engineering Services, LLC
201401370045	Holyoke	E N White Elem	Design Development	Accelerated Repair	Boiler		-	-	-	BVH Integrated Services, P.C.
201201370015	Holyoke	Lt Elmer J McMahon Elem	OPM Selection	Core Program			-	-	-	-
201401370025	Holyoke	Morgan Elem	Design Development	Accelerated Repair	Boiler		-	-	-	BVH Integrated Services, P.C.
201201370605	Holyoke	Wm J Dean Voc Tech High	Building Complete	Science Lab Initiative	Addition / Renovation	DBB	Skanska USA Building, Inc	Kaestle Boos Associates, Inc.	RAC Builders, Inc.	BVH Integrated Services, P.C.
201301380010	Hopedale	Memorial	Final Audit Approved	Accelerated Repair	Roof	DBB	Atlantic Construction and Management, Inc.	Civitects PC	MDM Engineering	Simpson Gumpertz & Heger Inc.
201301390005	Hopkinton	Center	Design Development	Core Program	New Construction		Compass Project Management, Inc.	Drumrey Rosane Anderson, Inc.	-	RDK Engineers
200801410410	Hudson	John F. Kennedy Middle School	Closeout	Core Program	New Construction	DBB	PMA Construction Services	OMR Architects, Inc.	Bacon-Agostini Construction Joint Venture	WSP USA
201401410007	Hudson	Mulready Elementary	Construction	Accelerated Repair	Roof		Atlantic Construction and Management, Inc.	Raymond Design Associates, Inc.	Capeway Roofing Systems, Inc.	CBI Consulting Inc.
201401440015	Ipswich	Winthrop High School Learning Center	Feasibility Study	Core Program			PMA Construction Services	Perkins Eastman/DPC	-	-
201601490536	Lawrence	Center	OPM Selection	Accelerated Repair	Boiler		-	-	-	-
201501510505	Leicester	Leicester High	Construction	Accelerated Repair	Roof		Hill International Company	Gale Associates, Inc.	-	Russo Barr Associates, Inc.
201501530025	Leominster	Johnny Appleseed	Design Development	Accelerated Repair	Roof, Windows / Doors		NETCO Construction Project Managers, Inc.	Habeeb & Associates Architects, Inc.	-	Russo Barr Associates, Inc.
201401530030	Leominster	Northwest	Closeout	Accelerated Repair	Roof		Architectural Consulting Group, LLC	Gale Associates, Inc.	Greenwood Industries, Inc.	Building Enclosure Associates, LLC
201101540005G	Leverett	Leverett Elementary	Final Audit Approved	Green Repair	Roof, Windows / Doors	DBB	Potomac Capital Advisors	DiMarinisi & Wolfe Architects Urban Designers	-	Russo Barr Associates, Inc.
201101550010E	Lexington	Joseph Estabrook	Final Audit Approved	Core Program	New Construction	CM@R	Hill International Company	DiNisco Design Partnership, Limited	Shawmut Design and Construction	BVH Integrated Services, P.C.
201501550035	Lexington	Maria Hastings	OPM Selection	Core Program			-	-	-	-

200801590505	Longmeadow	Longmeadow High School	Final Audit Approved	Core Program	New Construction	CM@R	Joslin, Lesser + Associates Inc.	OMR Architects, Inc.	Gilbane Building Company	Foreman Building Commissioning, LP
201401600505	Lowell	Lowell High	Designer Selection	Core Program			Skanska USA Building, Inc	-	-	-
201501610020	Ludlow	Chapin Street Elementary School	Eligibility Period	Core Program			-	-	-	-
201501610010	Ludlow	East Street Elementary School	Design Development	Accelerated Repair	Roof, Boiler		STV Incorporated	Johnson Roberts Associates, Inc.	-	Colliers International
200801620505	Lunenburg	Lunenburg High School		Core Program			-	-	-	-
201001620505	Lunenburg	Lunenburg High School	Building Complete	Core Program	New Construction	CM@R	Joslin, Lesser + Associates Inc.	Tappe Associates, Inc.	Shawmut Design and Construction	Cannon Design
201201630405	Lynn	Breed Middle School	Final Audit Approved	Accelerated Repair	Windows / Doors	DBB	Diversified Project Management	Kaestle Boos Associates, Inc.	GVW, Inc.	CBI Consulting Inc.
201401630045	Lynn	E J Harrington	Construction	Accelerated Repair	Roof		NETCO Construction Project Managers, Inc.	Habeeb & Associates Architects, Inc.	Capeway Roofing Systems, Inc.	CBI Consulting Inc.
201201630605	Lynn	Lynn Voc Tech Institute	Final Audit Approved	Accelerated Repair	Roof	DBB	Diversified Project Management	Kaestle Boos Associates, Inc.	Gibson Roofs, Inc.	CBI Consulting Inc.
201401630420	Lynn	Pickering Middle	Feasibility Study	Core Program			Leftfield, LLC	Raymond Design Associates, Inc.	-	-
200901630305	Lynn	Thurgood Marshall Middle School	Building Complete	Core Program	New Construction	CM@R	Joslin, Lesser + Associates Inc.	Raymond Design Associates, Inc.	Walsh Brothers, Inc.	Rist-Frost-Shumway Engineering, P.C.
201401630040	Lynn	Wm P Connery	Closeout	Accelerated Repair	Roof		NETCO Construction Project Managers, Inc.	Habeeb & Associates Architects, Inc.	Gibson Roofs, Inc.	CBI Consulting Inc.
201506980010	Manchester Essex Regional	Manchester Memorial Elementary	Eligibility Period	Core Program			-	-	-	-
201501680015	Marblehead	Elbridge Gerry	Eligibility Period	Core Program			-	-	-	-
200801680020	Marblehead	Glover School	Final Audit Approved	Core Program	New Construction	DBB	Municipal Building Consultants, Inc.	JCJ Architecture, PC	G & R Construction, Inc.	RDK Engineers
201501700025	Marlborough	Richer	Eligibility Period	Core Program			-	-	-	-
201601710310	Marshfield	Furnace Brook Middle	OPM Selection	Accelerated Repair	Roof		-	-	-	-
201101710505	Marshfield	Marshfield High	Building Complete	Core Program	New Construction - Model School	DBB	Compass Project Management, Inc.	Ai3 Architects LLC	Brait Builders Ventures	Sebasta Blomberg & Associates, Inc.
201101720035G	Mashpee	Quashnet School		Green Repair		DBB	-	-	-	-
201601720035	Mashpee	Quashnet School	OPM Selection	Accelerated Repair	Windows / Doors		-	-	-	-
200801740505	Maynard	Maynard High School	Final Audit Approved	Core Program	New Construction	DBB	Municipal Building Consultants, Inc.	Tappe Associates, Inc.	CTA Construction Co., Inc.	WSP USA
201401750007	Medfield	Ralph Wheelock School	Design Development	Accelerated Repair	Boiler		-	-	-	RDK Engineers
201201760505	Medford	Medford High	Final Audit Approved	Science Lab Initiative	Addition / Renovation	DBB	Leftfield, LLC	DiNisco Design Partnership, Limited	G & R Construction, Inc.	Cannon Design
201301760505	Medford	Medford High	Closeout	Accelerated Repair	Windows / Doors, Boiler	DBB	Architectural Consulting Group, LLC	Dietz & Company Architects, Inc.	NB Kenney Company, Inc	Symmes, Maini & McKee Associates
201401770013	Medway	John D Mc Govern Elem	Closeout	Accelerated Repair	Windows / Doors		Arcadis U.S., Inc.	CBI Consulting Inc.	-	Russo Barr Associates, Inc.
201401780017	Melrose	Herbert Clark Hoover	Construction	Accelerated Repair	Windows / Doors		Colliers International	ICON architecture, inc.	-	Simpson Gumpertz & Heger Inc.
201201780505	Melrose	Melrose High	Final Audit Approved	Science Lab Initiative	Addition / Renovation	DBB	Hill International Company	Ai3 Architects LLC	G & R Construction, Inc.	WSP USA
201101780050	Melrose	Winthrop		Core Program			-	-	-	-
200801810505	Methuen	Methuen High School	Closeout	Core Program	Addition / Renovation	CM@R	KBA/Trident	Finegold Alexander and Associates Inc.	Consigli Construction Company, Inc.	Environmental Health and Engineering
201501820011	Middleborough	Memorial Early Childhood Center	Design Development	Accelerated Repair	Roof		Architectural Consulting Group, LLC	Knight, Bagge & Anderson, Inc.	-	Russo Barr Associates, Inc.
201401820505	Middleborough	Middleborough High	Designer Selection	Core Program			-	-	-	-
201401840003	Middleton	Fuller Meadow	Closeout	Accelerated Repair	Roof		Hill International Company	CBI Consulting Inc.	-	Building Enclosure Associates, LLC
201101850090	Milford	Woodland	Construction	Core Program	New Construction	CM@R	Joslin, Lesser + Associates Inc.	HMFH Architects, Inc.	Shawmut Design and Construction	Consulting Engineering Services, LLC
201401870005	Millis	Clyde F Brown	Feasibility Study	Core Program			Compass Project Management, Inc.	Tappe Associates, Inc.	-	-

200908300605	Minuteman Voc Tech	Minuteman Regional High School	Approved Project Vote Pending	Core Program	New Construction		Skanska USA Building, Inc	Kaestle Boos Associates, Inc.	-	Bard, Rao + Athanas Consulting Engineers, LLC
201107129999	Monomoy	Monomoy Regional High School	Building Complete	Core Program	New Construction - Model School	DBB	Skanska USA Building, Inc	Mount Vernon Group Architects, Inc.	Fontaine Brothers, Inc.	Sebesta Blomberg & Associates, Inc.
201307150505	Mount Greylock	Mt Greylock Reg High	Design Development	Core Program	Addition / Renovation		Dore & Whittier Management Partners, Inc.	Perkins Eastman/DPC	-	BVH Integrated Services, P.C.
200807200020	Narragansett	Templeton Center School	Design Development	Core Program			Colliers International	Symmes Maini & McKee Associates, Inc.	-	Fitzemeyer & Tocci Associates, Inc.
201407250025	Nashoba	Florence Sawyer Sch	Accelerated Repair	Boiler			-	-	-	-
200807250015	Nashoba	Pompositticut Elementary School	Closeout	Core Program	Addition / Renovation	DBB	Construction Monitoring Services, Inc.	Symmes Maini & McKee Associates, Inc.	P.J. Stella Construction Corp.	Colliers International
201308520605	Nashoba Valley Tech	Nashoba Valley Tech H S	Final Audit Approved	Accelerated Repair	Roof	DBB	STV Incorporated	CGKV Architects, Inc.	Stanley Roofing Company, Inc.	CBI Consulting Inc.
201501980305	Natick	J F Kennedy Middle Sch	Eligibility Period				-	-	-	-
201101980031G	Natick	Johnson		Green Repair		DBB	-	-	-	-
201306600305	Nauset	Nauset Reg Middle	Final Audit Approved	Accelerated Repair	Roof	DBB	Colliers International	ICON architecture, inc.	Capeway Roofing Systems, Inc.	Russo Barr Associates, Inc.
201301990035	Needham	Hillside Elementary	Schematic Design	Core Program	New Construction		Steven H. Popper Town Employee	Dore & Whittier Architects, Inc.	-	-
201502010063	New Bedford	Alfred J Gomes	Construction	Accelerated Repair	Windows / Doors		Vertex Construction Services	-	-	CBI Consulting Inc.
201502010123	New Bedford	Casmir Pulaski	Construction	Accelerated Repair	Windows / Doors, Boiler		Vertex Construction Services	-	-	CBI Consulting Inc. WSP USA
201502010078	New Bedford	Hayden/McFadden	Construction	Accelerated Repair	Windows / Doors, Boiler		Vertex Construction Services	-	-	CBI Consulting Inc. WSP USA
201202010115	New Bedford	John Avery Parker		Core Program			-	-	-	-
201502010115	New Bedford	John Avery Parker	Schematic Design	Accelerated Repair	Windows / Doors, Boiler		Vertex Construction Services	-	-	-
201602010115	New Bedford	John Avery Parker	OPM Selection	Accelerated Repair	Windows / Doors		-	-	-	-
200902010070	New Bedford	John Hannigan	Design Development	Core Program	New Construction		Daedalus Projects Inc	Turowski2 Architecture, Inc.	-	WSP USA
W201002010505P2	New Bedford	New Bedford High	Final Audit Approved	Waitlist	Repair	DBB	Architectural Consulting Group, LLC	Mount Vernon Group Architects, Inc.	Contractor's Network, Inc.	-
201502010045	New Bedford	Sgt Wm H Carney Acad	Construction	Accelerated Repair	Windows / Doors		Vertex Construction Services	-	-	CBI Consulting Inc. WSP USA
W201002019999P2	New Bedford	Taylor School at the Sea Lab Marine Science Education Center	Construction	Waitlist	Addition / Renovation	DBB	Architectural Consulting Group, LLC	Mount Vernon Group Architects, Inc.	M. O'Connor Contracting, Inc.	WSP USA
201102040005	Newburyport	Francis T Bresnahan Elem	Closeout	Core Program	New Construction - Model School	DBB	HEERY	HMFH Architects, Inc.	CTA Construction Co., Inc.	Fitzemeyer & Tocci Associates, Inc.
201002040305	Newburyport	Rupert A. Nock Middle School	Closeout	Core Program	Addition / Renovation	CM@R	HEERY	Miller Dyer Spears Inc.	Gilbane Building Company	Fitzemeyer & Tocci Associates, Inc.
201102070005	Newton	A E Angier	Building Complete	Core Program	New Construction	CM@R	Joslin, Lesser + Associates Inc.	DiNisco Design Partnership, Limited	W. T. Rich Company Inc.	Fitzemeyer & Tocci Associates, Inc.
201302070025	Newton	Cabot	Schematic Design	Core Program		CM@R	Joslin, Lesser + Associates Inc.	DiNisco Design Partnership, Limited	W. T. Rich Company Inc.	-
200802079999	Newton	Carr School		Core Program			-	-	-	-
200802079998	Newton	Newton Education Center		Core Program			-	-	-	-
200802080005	Norfolk	Freeman-Kennedy Elementary School	Closeout	Core Program	New Construction	DBB	Joslin, Lesser + Associates Inc.	Flansburgh Associates, Inc.	Fontaine Brothers, Inc.	WSP USA
200909150705	Norfolk County Agriculture	Norfolk County Agr	Closeout	Core Program	Addition / Renovation	DBB	Compass Project Management, Inc.	Turowski2 Architecture, Inc.	Brait Builders Corp.	Rist-Frost-Shumway Engineering, P.C.
200802090305	North Adams	Silvio O Conte Middle School	Building Complete	Core Program	Addition / Renovation	DBB	Colliers International	Jones Whitsett Architects, Inc.	PDS Engineering and Construction, Inc.	Rist-Frost-Shumway Engineering, P.C.
201402120015	North Attleborough	Roosevelt Avenue	Closeout	Accelerated Repair	Boiler		Pinck & Co., Inc.	Consulting Engineering Services, LLC	Falite Brothers Inc.	Bard, Rao + Athanas Consulting Engineers, LLC
201602150015	North Brookfield	North Brookfield Elem	OPM Selection	Accelerated Repair	Roof		-	-	-	-

201107350505	North Middlesex	North Middlesex Reg	Construction	Core Program	New Construction	DBB	HEERY	Symmes Maini & McKee Associates, Inc.	CTA Construction Co., Inc.	Horizon Engineering Associates, LLP
201502170003	North Reading	E Ethel Little School	Construction	Accelerated Repair	Roof		Compass Project Management, Inc.	HAKS Engineers, P.C.	-	Thompson & Lichtner Co., Inc.
201002170505	North Reading	North Reading High School	Building Complete	Core Program	Addition / Renovation	CM@R	PMA Construction Services Inc.	Dore & Whittier Architects, Inc.	Gilbane Building Company	Cannon Design
201602100005	Northampton	Bridge Street	OPM Selection	Accelerated Repair	Roof		-	-	-	-
201402100025	Northampton	Leeds	Building Complete	Accelerated Repair	Roof		STV Incorporated	Raymond Design Associates, Inc.	R & H Roofing, LLP	Russo Barr Associates, Inc.
201602100025	Northampton	Leeds	OPM Selection	Accelerated Repair	Roof		-	-	-	-
201402100029	Northampton	R. K. Finn Ryan Road	Closeout	Accelerated Repair	Roof		STV Incorporated	Raymond Design Associates, Inc.	R & H Roofing, LLP	Russo Barr Associates, Inc.
200904060705	Northampton-Smith	Smith Vocational and Agricultural High School		Core Program		DBB	-	-	-	-
201102130003	Northborough	Lincoln Street	Construction	Core Program	Addition / Renovation	DBB	Colliers International	Lamoureux Pagano & Associates, Inc.	Brait Builders Corp.	Fitzmeyer & Tocci Associates, Inc.
201502140001	Northbridge	W Edward Balmer	Eligibility Period	Core Program			-	-	-	-
200908530605	Northeast Metro Voc	Northeast Metro Reg Voc		Core Program			-	-	-	-
200902180505	Norton	Norton High School	Closeout	Core Program	Addition / Renovation	CM@R	Pinck & Co., Inc.	JCJ Architecture, PC	W. T. Rich Company Inc.	Rist-Frost-Shumway Engineering, P.C.
201402200010	Norwood	Cornelius M Callahan	Closeout	Accelerated Repair	Boiler		PMA Construction Services	Consulting Engineering Services, LLC	George T. Wilkinson, Inc.	Symmes, Maini & McKee Associates
201102200075G	Norwood	George F. Willett		Green Repair		DBB	-	-	-	-
200802230010	Orange	Dexter Park		Core Program			-	-	-	-
201302230010	Orange	Dexter Park		Core Program			-	-	-	-
201402240005	Orleans	Orleans Elementary	Construction	Accelerated Repair	Windows / Doors		Architectural Consulting Group, LLC	Tighe & Bond, Inc.	-	Gale Associates, Inc.
200802260405	Oxford	Oxford Middle School	Closeout	Core Program	Repair	DBB	Diversified Project Management	CGKV Architects, Inc.	J.J. Cardosi, Inc.	Cannon Design
201308600605	Pathfinder Voc Tech	Pathfinder Voc Tech	Closeout	Accelerated Repair	Roof	DBB	exPERTcon, Inc.	Baker/Wohl Architects, Inc.	Allied Restoration Corporation	Building Enclosure Associates, LLC
200802290305	Peabody	Higgins Middle School	Construction	Core Program	New Construction	DBB	Daedalus Projects Inc	DiNisco Design Partnership, Limited	Bacon-Agostini Construction Joint Venture	BVH Integrated Services, P.C.
201102290007G	Peabody	John E Burke	Final Audit Approved	Green Repair	Roof, Windows / Doors, Boiler	DBB	Daedalus Projects Inc	LPBA/ Architects, Inc.	-	Sebesta Blomberg & Associates, Inc.
201402290016	Peabody	John E. McCarthy	Construction	Accelerated Repair	Roof, Windows / Doors		Hill International Company	Civitects PC	-	Thompson & Lichtner Co., Inc.
201502290510	Peabody	Peabody Veterans Memorial High	Schematic Design	Accelerated Repair	Roof		Municipal Building Consultants, Inc.	Civitects PC	-	-
201102290027G	Peabody	William A Welch Sr	Final Audit Approved	Green Repair	Roof	DBB	Daedalus Projects Inc	LPBA/ Architects, Inc.	-	Sebesta Blomberg & Associates, Inc.
201302310010	Pembroke	Hobomock Elementary	Closeout	Accelerated Repair	Roof	DBB	Pinck & Co., Inc.	The S/L/A/M Collaborative	Greenwood Industries, Inc.	CBI Consulting Inc.
201302310015	Pembroke	North Pembroke Elem	Closeout	Accelerated Repair	Roof	DBB	Pinck & Co., Inc.	The S/L/A/M Collaborative	Paul J. Rogan Co., Inc.	CBI Consulting Inc.
201302310305	Pembroke	Pembroke Community Middle School	Closeout	Accelerated Repair	Roof	DBB	Pinck & Co., Inc.	The S/L/A/M Collaborative	Paul J. Rogan Co., Inc.	CBI Consulting Inc.
201302310505	Pembroke	Pembroke High School	Closeout	Accelerated Repair	Roof	DBB	Pinck & Co., Inc.	The S/L/A/M Collaborative	Greenwood Industries, Inc.	CBI Consulting Inc.
201307450405	Pentucket	Pentucket Reg Middle	Final Audit Approved	Accelerated Repair	Roof, Boiler	DBB	Arcadis U.S., Inc.	CGKV Architects, Inc.	Ambient Temperature Corporation	CBI Consulting Inc. Colliers International
201507450505	Pentucket	Pentucket Reg Sr High	Eligibility Period				-	-	-	-
201107500007G	Pioneer Valley	Pearl E Rhodes Elem		Green Repair		DBB	-	-	-	-
201002360510	Pittsfield	Taconic High School	Construction	Core Program	New Construction	CM@R	Skanska USA Building, Inc	Drummeey Rosane Anderson, Inc.	Gilbane Building Company	Colliers International
201202390515	Plymouth	Plymouth South High	Construction	Core Program	New Construction	DBB	Ted Gentry Associates, Inc	Ai3 Architects LLC	Bacon-Agostini Construction Joint Venture	Rist-Frost-Shumway Engineering, P.C.

201302420505	Provincetown	Provincetown High	Construction	Core Program	Repair	DBB	Atlantic Construction and Management, Inc.	Raymond Design Associates, Inc.	E. Amanti & Sons, Inc.	BVH Integrated Services, P.C.
201602430040	Quincy	Atherton Hough	OPM Selection	Accelerated Repair	Boiler	-	-	-	-	-
201502430020	Quincy	Beechwood Knoll Elem	Design Development	Accelerated Repair	Roof, Windows / Doors	-	Atlantic Construction and Management, Inc.	Baker/Wohl Architects, Inc.	-	CBI Consulting Inc.
201602430020	Quincy	Beechwood Knoll Elem	OPM Selection	Accelerated Repair	Boiler	-	-	-	-	-
200802430315	Quincy	Central Middle School	Final Audit Approved	Core Program	New Construction - Model School	DBB	Tishman Construction Corporation of MA	Ai3 Architects LLC	H.V. Collins Co., Inc.	Sebesta Blomberg & Associates, Inc.
201402430075	Quincy	Francis W Parker	Closeout	Accelerated Repair	Windows / Doors	-	PMA Construction Services	Russo Barr Associates, Inc.	Lockheed Window Corporations	Simpson Gumpertz & Heger Inc.
201402430035	Quincy	Lincoln-Hancock Comm Sch	Closeout	Accelerated Repair	Windows / Doors	-	PMA Construction Services	Russo Barr Associates, Inc.	Lockheed Window Corporations	Simpson Gumpertz & Heger Inc.
201302430060	Quincy	Merrymount	Closeout	Accelerated Repair	Windows / Doors	DBB	Skanska USA Building, Inc	Habeeb & Associates Architects, Inc.	Alpha Contracting Associates, Inc.	Simpson Gumpertz & Heger Inc.
201502430060	Quincy	Merrymount	Design Development	Accelerated Repair	Roof	-	Atlantic Construction and Management, Inc.	Baker/Wohl Architects, Inc.	-	CBI Consulting Inc.
201602430060	Quincy	Merrymount	OPM Selection	Accelerated Repair	Boiler	-	-	-	-	-
201302430510	Quincy	North Quincy High	Closeout	Accelerated Repair	Windows / Doors	DBB	Skanska USA Building, Inc	Habeeb & Associates Architects, Inc.	GVW, Inc.	Simpson Gumpertz & Heger Inc.
201302430320	Quincy	Reay E Sterling Middle	Schematic Design	Core Program	New Construction	-	Joslin, Lesser + Associates Inc.	Ai3 Architects LLC	-	-
201302430110	Quincy	Wollaston School	Closeout	Accelerated Repair	Windows / Doors	DBB	Skanska USA Building, Inc	Habeeb & Associates Architects, Inc.	Northeast Energy Control Systems	Simpson Gumpertz & Heger Inc.
201602430110	Quincy	Wollaston School	OPM Selection	Accelerated Repair	Boiler	-	-	-	-	-
201402440018	Randolph	J F Kennedy Elem	Construction	Accelerated Repair	Windows / Doors	-	STV Incorporated	Taylor & Burns, Inc.	Modern Glass & Aluminum, Inc.	Gale Associates, Inc.
201302440410	Randolph	Randolph Community Middle	Final Audit Approved	Accelerated Repair	Boiler	DBB	NETCO Construction Project Managers, Inc.	Taylor & Burns, Inc.	AAlanco Service Corporation	Consulting Engineering Services, LLC
201302440505	Randolph	Randolph High	Final Audit Approved	Accelerated Repair	Roof	DBB	NETCO Construction Project Managers, Inc.	Taylor & Burns, Inc.	John F. Shea Company, Inc.	Gale Associates, Inc.
201402440505	Randolph	Randolph High	Construction	Accelerated Repair	Windows / Doors	-	STV Incorporated	Taylor & Burns, Inc.	A&A Window Products, Inc.	Gale Associates, Inc.
201502480056	Revere	Garfield Elementary School	Design Development	Accelerated Repair	Roof	-	Leftfield, LLC	Turowski2 Architecture, Inc.	-	Thompson & Lichtner Co., Inc.
201002480035	Revere	Staff Sergeant James J. Hill School	Building Complete	Core Program	New Construction	DBB	Hill International Company	Drumrey Rosane Anderson, Inc.	CTA Construction Co., Inc.	Rist-Frost-Shumway Engineering, P.C.
200802510305	Rockland	John W. Rogers Middle School	Final Audit Approved	Core Program	New Construction	CM@R	Daedalus Projects Inc	Dore & Whittier Architects, Inc.	Agostini Construction Co., Inc.	Consulting Engineering Services, LLC
201202530005	Rowe	Rowe Elem	-	Core Program	-	-	-	-	-	-
200902580305G	Salem	Collins Middle School	Closeout	Green Repair	Roof, Windows / Doors, Boiler, Building Envelope	CM@R	KV Associates, Inc.	Reinhardt Associates, Inc.	Gilbane Building Company	Rist-Frost-Shumway Engineering, P.C.
201002580050G	Salem	Saltonstall School	Closeout	Green Repair	Roof, Windows / Doors, Boiler, Building Envelope	CM@R	KV Associates, Inc.	Reinhardt Associates, Inc.	Gilbane Building Company	Rist-Frost-Shumway Engineering, P.C.
201002620305	Saugus	Belmonte Middle School	Closeout	Core Program	Repair	CM@R	Skanska USA Building, Inc	Fletcher Thompson Architecture Engineering, LLC	Consigli Construction Company, Inc.	Consulting Engineering Services, LLC
201202620505	Saugus	Saugus High	-	Science Lab Initiative	-	-	-	-	-	-
201402620505	Saugus	Saugus High	Feasibility Study	Core Program	-	-	PMA Construction Services	-	-	-
201202640305	Scituate	Gates Intermediate School	Construction	Core Program	New Construction	DBB	Daedalus Projects Inc	Dore & Whittier Architects, Inc.	Bacon-Agostini Construction Joint Venture	WSP USA
201602660015	Sharon	Heights Elementary	OPM Selection	Accelerated Repair	Roof	-	-	-	-	-
201208710605	Shawsheen Valley Voc Tech	Shawsheen Valley Voc Tech High School	Final Audit Approved	Accelerated Repair	Boiler	DBB	Diversified Project Management	Shekar & Associates, Inc.	NB Kenney Company, Inc	Fitzmeyer & Tocci Associates, Inc.
201102690010G	Sherborn	Pine Hill	-	Green Repair	-	DBB	-	-	-	-

201302710005	Shrewsbury	Beal School		Core Program							
201502710005	Shrewsbury	Beal School	Eligibility Period	Core Program							
200802710305	Shrewsbury	Sherwood Middle School	Closeout	Core Program	New Construction	CM@R	PMA Construction Services	Lamoureux Pagano & Associates, Inc.	Gilbane Building Company	RDK Engineers	
201308290605	So Middlesex Voc Tech Reg	Joseph P Keefe Tech HS	Final Audit Approved	Accelerated Repair	Roof	DBB	PMA Construction Services	Raymond Design Associates, Inc.	Greenwood Industries, Inc.	Russo Barr Associates, Inc.	
200811119999	Somerset-Berkley	Somerset-Berkley High	Building Complete	Core Program	New Construction - Model School	DBB	Skanska USA Building, Inc	Ai3 Architects LLC	Bacon-Agostini Construction Joint Venture	Horizon Engineering Associates, LLP	
200902740111E	Somerville	East Somerville Community School at Cummings	Closeout	Core Program	Renovation	CM@R	PMA Construction Services	Maguire Group Inc.	Gilbane Building Company	Foreman Building Commissioning, LP	
201302740505	Somerville	Somerville High	Feasibility Study	Core Program	Addition / Renovation		PMA Construction Services	Symmes Maini & McKee Associates, Inc.	-	-	
201602740120	Somerville	Winter Hill Community	OPM Selection	Accelerated Repair	Roof, Windows / Doors		-	-	-	-	
200902780015	South Hadley	Plains School	Building Complete	Core Program	New Construction	DBB	Arcadis U.S., Inc.	Jones Whitsett Architects, Inc.	Fontaine Brothers, Inc.	Colliers International	
201408730605	South Shore Reg Voc Tech	So Shore Voc Tech High	Closeout	Accelerated Repair	Boiler		exPERTcon, Inc.	Richard D. Kimball Company, Inc.	-	Consulting Engineering Services, LLC	
201407650505	Southern Berkshire	Mt Everett Regional	Building Complete	Accelerated Repair	Roof, Boiler		NETCO Construction Project Managers, Inc.	Dietz & Company Architects, Inc.	Titan Roofing, Inc.	Colliers International	
200908760605	Southern Worcester Cty VT	Bay Path Regional Vocational Technical High School	Building Complete	Core Program	Addition / Renovation	CM@R	HEERY	Kaestle Boos Associates, Inc.	Consigli Construction Company, Inc.	RDK Engineers	
201107660305	Southwick-Tolland	Powder Mill	Closeout	Core Program	Repair	DBB	Colliers International	JCJ Architecture, PC	PDS Engineering and Construction, Inc.	BVH Integrated Services, P.C.	
201107660505	Southwick-Tolland	Southwick-Tolland Regional High	Closeout	Core Program	Addition / Renovation	DBB	Colliers International	JCJ Architecture, PC	Fontaine Brothers, Inc.	BVH Integrated Services, P.C.	
200807660010	Southwick-Tolland	Woodland Elementary School	Closeout	Core Program	Addition / Renovation	DBB	Colliers International	JCJ Architecture, PC	PDS Engineering and Construction, Inc.	BVH Integrated Services, P.C.	
200807670505	Spencer-E Brookfield	David Prouty High		Core Program			Dore and Whittier Architects, Inc.	Perkins Eastman/DPC	-	-	
201502810350	Springfield	STEM Middle Academy	Design Development	Accelerated Repair	Roof		Skanska USA Building, Inc	CBI Consulting Inc.	-	Building Enclosure Associates, LLC	
201602810095	Springfield	Alfred G Zanetti	OPM Selection	Accelerated Repair	Windows / Doors		-	-	-	-	
201602810015	Springfield	Balliet Elementary School	OPM Selection	Accelerated Repair	Roof		-	-	-	-	
201602810360	Springfield	Balliet Middle School	OPM Selection	Accelerated Repair	Windows / Doors		-	-	-	-	
201302810310	Springfield	Chestnut Accelerated Middle School	Closeout	Accelerated Repair	Roof	DBB	Atlantic Construction and Management, Inc.	CBI Consulting Inc.	J.D. Rivet & Co., Inc.	Building Enclosure Associates, LLC	
201502810035	Springfield	Daniel B Brunton	Design Development	Accelerated Repair	Windows / Doors		Skanska USA Building, Inc	CBI Consulting Inc.	-	Building Enclosure Associates, LLC	
201102810125E	Springfield	Dryden Memorial	Final Audit Approved	Core Program	Addition / Renovation	CM@R	Arcadis U.S., Inc.	Drumme Rosane Anderson, Inc.	Morganti/Aquadro & Cerruti	BVH Integrated Services, P.C.	
201102810030E	Springfield	Elias Brookings	Building Complete	Core Program	New Construction	CM@R	Arcadis U.S., Inc.	Drumme Rosane Anderson, Inc.	Morganti/Aquadro & Cerruti	BVH Integrated Services, P.C.	
W20014137	Springfield	Forest Park Middle School	Final Audit Approved	Waitlist	Addition / Renovation	CM@R	Arcadis U.S., Inc.	Perkins Eastman/DPC	Consigli Construction Company, Inc.	Foreman Building Commissioning, LP	
201302810530	Springfield	High School/Science-Tech	Closeout	Accelerated Repair	Roof	DBB	Atlantic Construction and Management, Inc.	CBI Consulting Inc.	Kronenberger & Sons Restoration, INC.	Building Enclosure Associates, LLC	
201402810328	Springfield	John F Kennedy Middle	Construction	Accelerated Repair	Windows / Doors		Arcadis U.S., Inc.	Gale Associates, Inc.	-	Building Enclosure Associates, LLC	
201402810110	Springfield	Kensington Avenue	Construction	Accelerated Repair	Windows / Doors		Arcadis U.S., Inc.	Gale Associates, Inc.	Alpha Contracting Associates, Inc.	Building Enclosure Associates, LLC	
201602810110	Springfield	Kensington Avenue	OPM Selection	Accelerated Repair	Roof		-	-	-	-	
201602810330	Springfield	M Marcus Kiley Middle	OPM Selection	Accelerated Repair	Windows / Doors		-	-	-	-	
201302810060	Springfield	Margaret C Ells	Closeout	Accelerated Repair	Roof	DBB	Atlantic Construction and Management, Inc.	CBI Consulting Inc.	Allied Restoration Corporation	Building Enclosure Associates, LLC	
201602810140	Springfield	Mary M Lynch	OPM Selection	Accelerated Repair	Roof		-	-	-	-	

201502810155	Springfield	Mary M Walsh	Design Development	Accelerated Repair	Windows / Doors	-	-	CBI Consulting Inc.	-	-	Building Enclosure Associates, LLC
201302810355	Springfield	South End Middle School	Closeout	Accelerated Repair	Roof	DBB	-	Atlantic Construction and Management, Inc.	CBI Consulting Inc.	Titan Roofing, Inc.	Building Enclosure Associates, LLC
200902810500G	Springfield	Springfield Central High		Green Repair		DBB	-	-	-	-	-
201202810500	Springfield	Springfield Central High	Closeout	Science Lab Initiative	Addition / Renovation	CM@R	-	Leftfield, LLC	DiNisco Design Partnership, Limited	Morganti/Aquadro & Cerruti	Horizon Engineering Associates, LLP
200802819999	Springfield	Springfield Public Day High School		Core Program			-	-	-	-	-
201302810550	Springfield	Springfield Public Day High School	Closeout	Accelerated Repair	Roof	DBB	-	Atlantic Construction and Management, Inc.	CBI Consulting Inc.	-	Building Enclosure Associates, LLC
201502810550	Springfield	Springfield Public Day High School	Design Development	Accelerated Repair	Windows / Doors		-	Skanska USA Building, Inc	CBI Consulting Inc.	-	Building Enclosure Associates, LLC
200902840405	Stoneham	Stoneham Middle School	Closeout	Core Program	Addition / Renovation	CM@R	-	Joslin, Lesser + Associates Inc.	Tappe Associates, Inc.	Shawmut Design and Construction	RDK Engineers
201302850010	Stoughton	Helen Hansen Elementary	Closeout	Accelerated Repair	Windows / Doors	DBB	-	Hill International Company	Russo Barr Associates, Inc.	Lockheed Window Corporations	Building Enclosure Associates, LLC
201402850025	Stoughton	Joseph H Gibbons	Construction	Accelerated Repair	Roof, Windows / Doors		-	Atlantic Construction and Management, Inc.	CGKV Architects, Inc.	A&A Window Products, Inc.	Building Enclosure Associates, LLC
201302850014	Stoughton	Joseph R Dawe Jr Elem	Closeout	Accelerated Repair	Windows / Doors	DBB	-	Hill International Company	Russo Barr Associates, Inc.	Lockheed Window Corporations	Building Enclosure Associates, LLC
201302850505	Stoughton	Stoughton High	Design Development	Core Program			-	Compass Project Management, Inc.	Drumme Rosane Anderson, Inc.	-	Fitzemeyer & Tocci Associates, Inc.
201302850020	Stoughton	West Elementary	Final Audit Approved	Accelerated Repair	Roof	DBB	-	Hill International Company	Russo Barr Associates, Inc.	Titan Roofing, Inc.	Building Enclosure Associates, LLC
201502850020	Stoughton	West Elementary	Design Development	Accelerated Repair	Windows / Doors		-	Compass Project Management, Inc.	CBI Consulting Inc.	-	Building Enclosure Associates, LLC
200802870005	Sturbridge	Burgess Elementary School	Final Audit Approved	Core Program	Addition / Renovation	DBB	-	Lamoureux Pagano & Associates, Inc.	Drumme Rosane Anderson, Inc.	Fontaine Brothers, Inc.	Horizon Engineering Associates, LLP
201402880025	Sudbury	General John Nixon Elem	Final Audit Approved	Accelerated Repair	Roof, Windows / Doors		-	Skanska USA Building, Inc	Baker/Wohl Architects, Inc.	Silktown Roofing	Building Enclosure Associates, LLC
200802900305	Sutton	Sutton Middle School	Closeout	Core Program	Addition / Renovation	DBB	-	Colliers International	Flansburgh Associates, Inc.	Brait Builders Corp.	RDK Engineers
201102910010	Swampscott	Hadley	Final Audit Approved	Core Program	New Construction	DBB	-	Hill International Company	Mount Vernon Group Architects, Inc.	-	-
201602920006	Swansea	Elizabeth S Brown	OPM Selection	Accelerated Repair	Windows / Doors		-	-	-	-	-
201202920505	Swansea	Joseph Case High		Science Lab Initiative			-	-	-	-	-
201202920305	Swansea	Joseph Case Jr High		Core Program			-	-	-	-	-
201502930007	Taunton	Edmund Hatch Bennett	Design Development	Accelerated Repair	Roof, Windows / Doors		-	Arcadis U.S., Inc.	CSS Architects Incorporated	-	Gale Associates, Inc.
201502930042	Taunton	Joseph H Martin	Design Development	Accelerated Repair	Roof, Windows / Doors		-	Arcadis U.S., Inc.	CSS Architects Incorporated	-	Gale Associates, Inc.
201402930015	Taunton	Mulcahey Elementary School	Designer Selection	Core Program			-	CGA Project Management	-	-	-
201502950025	Tewksbury	Louise Davy Trahan	Eligibility Period				-	-	-	-	-
200802950505	Tewksbury	Tewksbury Memorial High School	Closeout	Core Program	New Construction - Model School	DBB	-	HEERY	Symmes Maini & McKee Associates, Inc.	CTA Ventures	Sebesta Blomberg & Associates, Inc.
201502960005	Tisbury	Tisbury Elementary	OPM Selection	Core Program			-	-	-	-	-
201602980005	Topsfield	Proctor Elementary	OPM Selection	Accelerated Repair	Roof		-	-	-	-	-
201602980010	Topsfield	Steward Elementary	OPM Selection	Accelerated Repair	Roof		-	-	-	-	-
201408780605	Tri County	Tri County Reg Voc Tech	Closeout	Accelerated Repair	Boiler		-	Colliers International	Shekar & Associates, Inc.	-	Fitzemeyer & Tocci Associates, Inc.
201507730025	Triton	Pine Grove	Eligibility Period	Core Program	Addition / Renovation		-	-	-	-	-
201403010505	Tyngsborough	Tyngsborough High School	Closeout	Accelerated Repair	Roof, Boiler		-	Municipal Building Consultants, Inc.	CSS Architects Incorporated	Greenwood Industries, Inc.	Colliers International
200803040505	Uxbridge	Uxbridge High	Final Audit Approved	Core Program	New Construction	CM@R	-	Joslin, Lesser + Associates Inc.	Raymond Design Associates, Inc.	Shawmut Design and Construction	Turner Facilities Management Solutions



200907750305	Wachusett	Mountview Middle School	Building Complete	Core Program	New Construction	DBB	Gary Kaczmarek Town Employee	Lamoureux Pagano & Associates, Inc.	CTA Construction Co., Inc.	Fitzmeyer & Tocci Associates, Inc.
201003050310	Wakefield	Galvin Middle School	Closeout	Core Program	New Construction	CM@R	Joslin, Lesser + Associates Inc.	Tappe Associates, Inc.	Bond Brothers, Inc.	B2Q Associates, Inc.
201303070015	Walpole	Fisher	Final Audit Approved	Accelerated Repair	Roof	DBB	NETCO Construction Project Managers, Inc.	ICON architecture, inc.	Rockwell Roofing, Inc.	Gale Associates, Inc.
201103080505G	Waltham	Waltham High School		Green Repair		DBB	-	-	-	-
201403080505	Waltham	Waltham High School	Feasibility Study	Core Program			Joslin, Lesser + Associates Inc.	Symmes Maini & McKee Associates, Inc.	-	-
201503100003	Wareham	John W. Decas Elementary School	Design Development	Accelerated Repair	Roof, Boiler		Colliers International	ICON architecture, inc.	-	Bard, Rao + Athanas Consulting Engineers, LLC Gale Associates, Inc.
201103100017	Wareham	Minot Forest		Core Program			-	-	-	-
201503100017	Wareham	Minot Forest	Eligibility Period	Core Program			-	-	-	-
201303100505	Wareham	Wareham Senior High	Final Audit Approved	Accelerated Repair	Roof	DBB	Hill International Company	Tighe & Bond, Inc.	Capeway Roofing Systems, Inc.	Russo Barr Associates, Inc.
201503140305	Watertown	Watertown Middle	Design Development	Accelerated Repair	Windows / Doors		-	-	-	Thompson & Lichtner Co., Inc.
201403150005	Wayland	Claypit Hill School	Construction	Accelerated Repair	Windows / Doors		Pinck & Co., Inc.	CGKV Architects, Inc.	Lockheed Window Corporations	Russo Barr Associates, Inc.
201603150020	Wayland	Loker School	OPM Selection	Accelerated Repair	Windows / Doors		-	-	-	-
200903160015	Webster	Park Avenue Elementary School	Building Complete	Core Program	New Construction	DBB	Hill International Company	Dore & Whittier Architects, Inc.	CTA Construction Co., Inc.	Cannon Design
201403170305	Wellesley	Wellesley Middle	Construction	Accelerated Repair	Windows / Doors		Arcadis U.S., Inc.	CSS Architects Incorporated	Paul J. Rogan Co., Inc.	Gale Associates, Inc.
200803170505	Wellesley	Wellesley Senior School	Closeout	Core Program	New Construction	CM@R	-	Symmes Maini & McKee Associates, Inc.	-	Rist-Frost-Shumway Engineering, P.C.
201303180005	Wellfleet	Wellfleet Elementary	Closeout	Accelerated Repair	Roof	DBB	Architectural Consulting Group, LLC	CSS Architects Incorporated	DDC Construction Inc.	Russo Barr Associates, Inc.
201103220005G	West Boylston	Major Edwards Elementary	Closeout	Green Repair	Windows / Doors	DBB	URS Corporation	Reinhardt Associates, Inc.	-	Cannon Design
201103220505G	West Boylston	West Boylston Jr-Sr High		Green Repair		DBB	-	-	-	-
201503230005	West Bridgewater	Spring Street School	Construction	Accelerated Repair	Roof		Potomac Capital Advisors	Tai Soo Kim Partners, LLC	-	Thompson & Lichtner Co., Inc.
201003230505	West Bridgewater	West Bridgewater Middle- Senior High School	Building Complete	Core Program	New Construction	DBB	Colliers International	Flansburgh Associates, Inc.	CTA Construction Co., Inc.	Cannon Design
200903320505	West Springfield	West Springfield High School	Closeout	Core Program	New Construction - Model School	DBB	Colliers International	Symmes Maini & McKee Associates, Inc.	Fontaine Brothers, Inc.	Turner Facilities Management Solutions
200903210305	Westborough	Gibbons Middle School	Design Development	Core Program	Repair		HEERY	Habeeb & Associates Architects, Inc.	-	BVH Integrated Services, P.C.
200903250020	Westfield	Abner Gibbs Elementary School	Construction	Core Program	New Construction - Model School	DBB	Skanska USA Building, Inc	Jones Whitsett Architects, Inc.	Fontaine Brothers, Inc.	Horizon Engineering Associates, LLP
201303260025	Westford	Col John Robinson	Building Complete	Accelerated Repair	Windows / Doors	DBB	Colliers International	Gale Associates, Inc.	GTC Construction Management	CBI Consulting Inc.
201303260007	Westford	Day Elementary	Building Complete	Accelerated Repair	Windows / Doors	DBB	Colliers International	Gale Associates, Inc.	J.J. Cardosi, Inc.	CBI Consulting Inc.
201303270005	Westhampton	Westhampton Elem School	Final Audit Approved	Accelerated Repair	Roof, Windows / Doors, Boiler	DBB	Atlantic Construction and Management, Inc.	CSS Architects Incorporated	Independent Roofing Co. Inc.	Building Enclosure Associates, LLC
200903300012	Weston	Field Elementary School	Closeout	Core Program	New Construction	DBB	Compass Project Management, Inc.	Jonathan Levi Architects LLC	Colantonio, Inc.	Foreman Building Commissioning, LP
201103310305G	Westport	Westport Middle		Green Repair		DBB	-	-	-	-
201403310305	Westport	Westport Middle	Feasibility Study	Core Program			Daedalus Projects Inc	Jonathan Levi Architects LLC	-	-
201503360020	Weymouth	Maria Weston Chapman Middle School					-	-	-	-
201103360080G	Weymouth	William Seach		Green Repair		DBB	KBA Architects	-	-	-
200803400005	Williamsburg	Anne T. Dunphy School	Closeout	Core Program	Addition / Renovation	DBB	Arcadis U.S., Inc.	Drumrey Rosane Anderson, Inc.	Enfield Builders, Inc.	B2Q Associates, Inc.
201203420060	Wilmington	North Intermediate	Final Audit Approved	Accelerated Repair	Windows / Doors	DBB	Diversified Project Management	-	-	CBI Consulting Inc.

200903420505	Wilmington	Wilmington High School	Building Complete	Core Program	New Construction	CM@R	Joslin, Lesser + Associates Inc.	Dore & Whittier Architects, Inc.	Gilbane Building Company	Symmes, Maini & McKee Associates
200803449999	Winchester	Parkhurst Elementary School		Core Program			-	-	-	-
201003440505	Winchester	Winchester High School	Construction	Core Program	Addition / Renovation	CM@R	Skanska USA Building, Inc	Symmes Maini & McKee Associates, Inc.	Consigli Construction Company, Inc.	RDK Engineers
200803460505	Winthrop	Winthrop High School	Construction	Core Program	New Construction	CM@R	Skanska USA Building, Inc	HMFH Architects, Inc.	Gilbane Building Company	WSP USA
201203470060	Woburn	Wyman	Design Development	Core Program	New Construction		Municipal Building Consultants, Inc.	DiNisco Design Partnership, Limited	-	Fitzemeyer & Tocci Associates, Inc.
201603480020	Worcester	Belmont Street Community	OPM Selection	Accelerated Repair	Windows / Doors		-	-	-	-
201603480050	Worcester	Chandler Elem Community	OPM Selection	Accelerated Repair	Windows / Doors, Boiler		-	-	-	-
201203480052	Worcester	Chandler Magnet	Final Audit Approved	Accelerated Repair	Windows / Doors	DBB	Tishman Construction Corporation of MA	Turowski2 Architecture, Inc.	J.J. Cardosi, Inc.	Russo Barr Associates, Inc.
201403480055	Worcester	Clark St Community	Closeout	Accelerated Repair	Windows / Doors		Architectural Consulting Group, LLC	ICON architecture, inc.	J.J. Cardosi, Inc.	Russo Barr Associates, Inc.
201303480060	Worcester	Columbus Park	Building Complete	Accelerated Repair	Windows / Doors, Boiler	DBB	Architectural Consulting Group, LLC	The S/L/A/M Collaborative	Contractor's Network, Inc.	RDK Engineers Russo Barr Associates, Inc.
201203488099	Worcester	Dr. James Caradonio Center	Final Audit Approved	Accelerated Repair	Boiler	DBB	Tishman Construction Corporation of MA	Turowski2 Architecture, Inc.	CAM HVAC & Construction, Inc.	RDK Engineers Russo Barr Associates, Inc.
201503480090	Worcester	Flagg Street	Design Development	Accelerated Repair	Windows / Doors		Arcadis U.S., Inc.	CSS Architects Incorporated	-	Russo Barr Associates, Inc.
201503480177	Worcester	Francis J McGrath Elem	Design Development	Accelerated Repair	Windows / Doors		Arcadis U.S., Inc.	CSS Architects Incorporated	-	Russo Barr Associates, Inc.
201403480100	Worcester	Goddard Sch/Science Tech	Closeout	Accelerated Repair	Windows / Doors		Architectural Consulting Group, LLC	ICON architecture, inc.	Lambrian Construction Corp.	Russo Barr Associates, Inc.
201503480115	Worcester	Grafton Street	Design Development	Accelerated Repair	Windows / Doors, Boiler		Arcadis U.S., Inc.	CSS Architects Incorporated	-	Rist-Frost-Shumway Engineering, P.C. Russo Barr Associates, Inc.
201203480140	Worcester	Jacob Hiatt Magnet	Final Audit Approved	Accelerated Repair	Boiler	DBB	Tishman Construction Corporation of MA	Turowski2 Architecture, Inc.	CAM HVAC & Construction, Inc.	RDK Engineers
201503480140	Worcester	Jacob Hiatt Magnet	Design Development	Accelerated Repair	Windows / Doors		Arcadis U.S., Inc.	CSS Architects Incorporated	-	Russo Barr Associates, Inc.
201203480145	Worcester	Lake View	Final Audit Approved	Accelerated Repair	Windows / Doors	DBB	Tishman Construction Corporation of MA	Turowski2 Architecture, Inc.	J.J. Cardosi, Inc.	Russo Barr Associates, Inc.
201203480175	Worcester	May Street	Final Audit Approved	Accelerated Repair	Windows / Doors	DBB	Tishman Construction Corporation of MA	Turowski2 Architecture, Inc.	J.J. Cardosi, Inc.	Russo Barr Associates, Inc.
201203480200	Worcester	Nelson Place	Construction	Core Program	New Construction	CM@R	Tishman Construction Corporation of MA	Lamoureux Pagano & Associates, Inc.	Fontaine Brothers, Inc.	Bard, Rao + Athanas Consulting Engineers, LLC
201403480520	Worcester	South High Community	Designer Selection	Core Program			-	-	-	-
201303480230	Worcester	Tatnuck	Building Complete	Accelerated Repair	Windows / Doors	DBB	Architectural Consulting Group, LLC	The S/L/A/M Collaborative	GVW, Inc.	Russo Barr Associates, Inc.
201403480240	Worcester	Union Hill School	Closeout	Accelerated Repair	Windows / Doors		Architectural Consulting Group, LLC	ICON architecture, inc.	J.J. Cardosi, Inc.	Russo Barr Associates, Inc.
201603480026	Worcester	Wawecus Road School	OPM Selection	Accelerated Repair	Windows / Doors		-	-	-	-
201403480260	Worcester	West Tatnuck	Closeout	Accelerated Repair	Windows / Doors		Architectural Consulting Group, LLC	ICON architecture, inc.	J.J. Cardosi, Inc.	Russo Barr Associates, Inc.
201303480225	Worcester	Worcester Arts Magnet Sch	Building Complete	Accelerated Repair	Windows / Doors	DBB	Architectural Consulting Group, LLC	The S/L/A/M Collaborative	GVW, Inc.	Russo Barr Associates, Inc.
201303480420	Worcester	Worcester East Middle	Building Complete	Accelerated Repair	Boiler	DBB	Architectural Consulting Group, LLC	The S/L/A/M Collaborative	Contractor's Network, Inc.	RDK Engineers
201503500003	Wrentham	Delaney	Approved Project Vote Pending	Accelerated Repair	Roof		P3 Inc.	Turowski2 Architecture, Inc.	-	Gale Associates, Inc.

APPENDIX B
2016 & 2017 ESTIMATED BID DATES

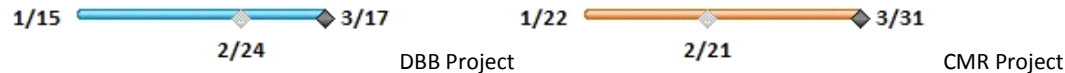
2017 ESTIMATED BID DATES

Note bid dates are Estimates ONLY. Please contact Districts for exact information.

Total Project Budget denotes total District costs and does not denote the basis of the MSBA Total Facilities Grant.

District	Enrollment	Project Budget	Start	Finish	Construct Budget	Notes	Jan '17	Feb '17	Mar '17	Apr '17	May '17	Jun '17	Jul '17	Aug '17	Sep '17	Oct '17	Nov '17	Dec '17	Jan '18
							Stoughton	1065	\$ 123.5	Wed 5/24/17	Wed 7/26/17	\$ 97.2	GMP targeted: July 2017					5/24	6/21
Billerica	1610	\$ 175.9	Mon 6/5/17	Fri 12/8/17	\$ 140.7	GMP targeted: December 2017						6/5	8/25	12/8					
Dedham	200	\$ 33.2	Thu 6/15/17	Thu 8/10/17	\$ 26.2	NTP targeted: August 2017						6/15	7/6	8/10					
Total	2875	\$ 332.6			\$ 264.1														

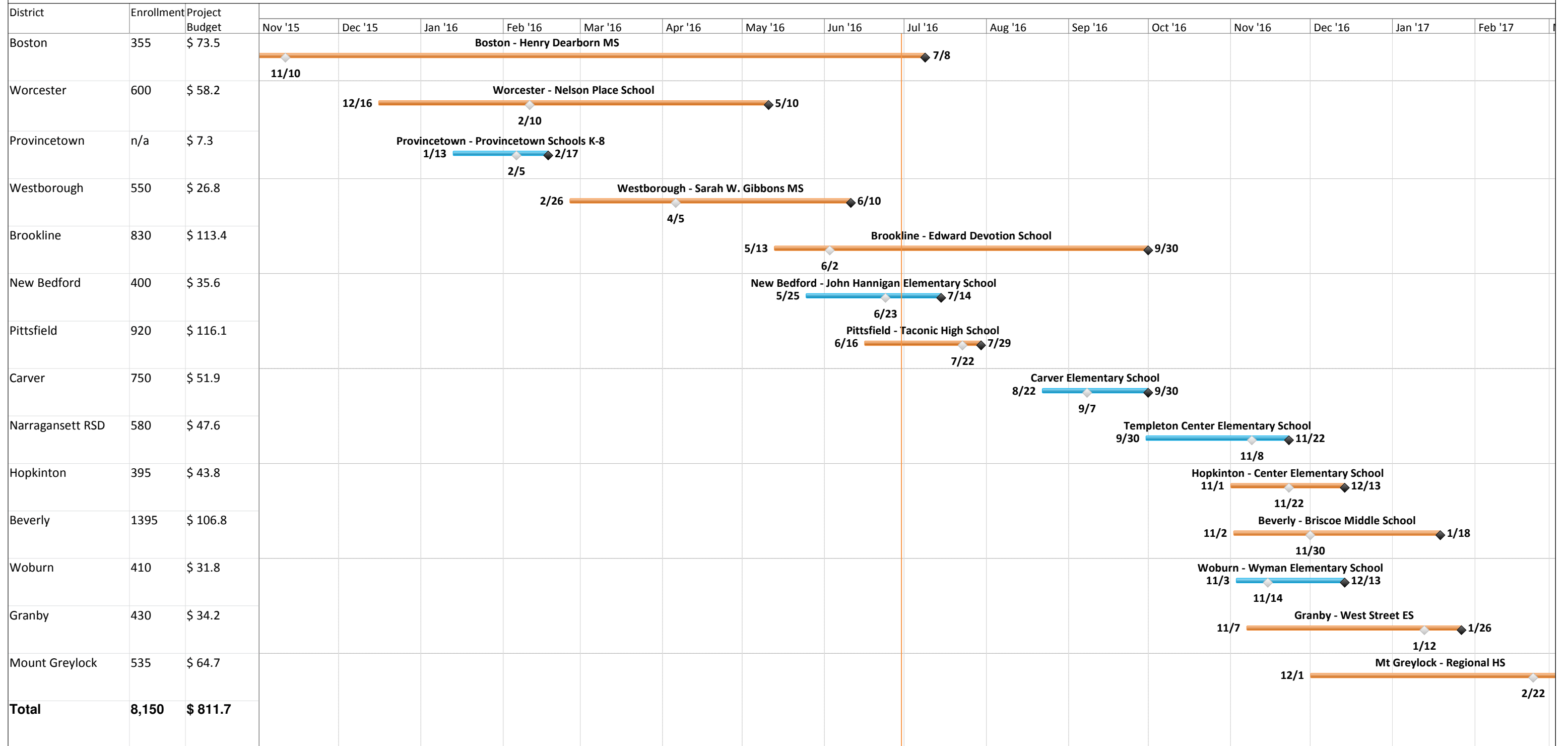
Note: Budget values are in millions.
 The project start date represents the Filed-Sub bid solicitation date, gray diamond Filed-Sub bid date, and the black diamond GC Bids / GMP Execution.



2016 ESTIMATED BID DATES

Note bid dates are Estimates ONLY. Please contact Districts for exact information.

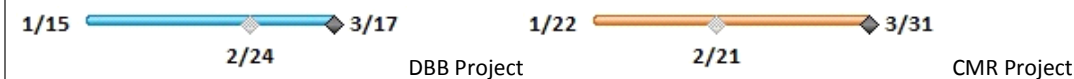
Total Project Budget denotes total District costs and does not denote the basis of the MSBA Total Facilities Grant.



Note: Budget values are in millions.

The project start date represents the Filed-Sub bid solicitation date, gray diamond Filed-Sub bid date, and the black diamond GC Bids / GMP Execution.

06/29/2016



APPENDIX C
CONSTRUCTION STATUS REPORT

**Projects in Construction
MSBA Grant Basis and Maximum Grant Amount
Data Reported as of June 29, 2016**

Core Program and Waitlist Totals			\$2,584,714,995														*Includes Alternates	\$1,601,243,489
Project	Grade	Contractor	Total Construction Cost*	Projected Enrollment	PFA or Bid Data	Proposed Sq.Ft.	Construction Cost/Sq.Ft.	Building Cost	Building Cost/Sq.Ft.	Procurement Type	Construction Start Date	Substantial Completion	Schedule Variance (days)	Physical Progress	Change Orders	Change Orders %	Construction Status	Est Max Total Facilities Grant
CAPITAL PIPELINE PROJECTS IN CONSTRUCTION																		
Core Program Totals			\$2,575,945,987				\$15,078		\$10,910									\$1,591,111,683
Abington Frolio Jr Hs	Junior High School	Brait Builders Corp.	\$78,465,366	1,115	Bid	235,370	\$333	\$56,420,036	\$240	Design/Bid/Build	03-Dec-15	18-Jul-17	0	35%	\$69,850	0.091%	Site development including storm water, sanitary systems and synthetic continues. Slab on grade installations complete roofing and light gage metal framing continue. First window delivery received.	\$48,528,486
Assabet Valley Assabet Valley Voc H S	Vocational / Technical	CTA Construction Co., Inc.	\$46,764,740	1,000	Bid	367,565	\$127	\$41,523,764	\$113	Design/Bid/Build	01-Apr-13	23-Aug-15	0	100%	\$4,056,033	8.673%	The 10-phase project is mostly complete. Work remaining includes minor punch list repairs, final commissioning and close out.	\$28,790,301
Athol-Royalston Riverbend	Elementary School	Fontaine Brothers, Inc.	\$31,594,000	545	Bid	95,726	\$330	\$24,859,000	\$260	Design/Bid/Build	08-Dec-14	14-Jun-16	0	96%	\$1,769,524	5.601%	Project reached substantial completion. FFE being installed. Site work including courtyard landscaping, sidewalks and the ball field work commencing.	\$26,011,620
Chicopee Chicopee Academy	Middle School	Fontaine Brothers, Inc.	\$31,487,000	825	Bid	176,425	\$178	\$25,639,000	\$145	Design/Bid/Build	01-Jul-14	11-Aug-15	0	99%	\$2,062,642	6.551%	Final punch list items as well as some commissioning items continue to be worked on.	\$28,813,458
Dracut Dracut Senior High	High School	CTA Construction Co., Inc.	\$45,900,000	1,160	Bid	226,844	\$202	\$38,377,028	\$169	Design/Bid/Build	27-Aug-12	29-Aug-14	0	99%	\$2,639,346	5.750%	The project team is working to resolve a site drainage issue and additional work associated with rooftop dunnage.	\$34,137,202
Franklin Franklin High	High School	Bacon-Agostini Construction Joint Venture	\$86,778,700	1,650	Bid	306,543	\$283	\$73,191,801	\$239	Design/Bid/Build	16-Oct-12	25-Jul-14	0	99%	\$1,115,790	1.286%	The landscape contractor is completing their punch list. The site contractor has been cleaning and redressing the baseball/softball infields.	\$54,558,408
Georgetown Georgetown Middle/High	Junior High School	L.D. Russo, Inc.	\$5,279,622	720	Bid	128,670	\$41	\$4,265,936	\$33	Design/Bid/Build	15-Apr-15	21-Dec-15	0	100%	\$562,131	10.647%	Minor punch list work remains to be completed.	\$3,377,260
Georgetown Penn Brook	Elementary School	Brait Builders Corp.	\$32,875,975	770	Bid	98,000	\$335	\$26,976,145	\$275	Design/Bid/Build	26-Sep-13	20-May-15	0	99%	\$3,922,227	11.930%	Sitework continues weather permitting. Commissioning complete and punch list work ongoing.	\$18,864,538
Hingham Hingham Middle School	Middle School	Brait Builders Corp.	\$48,436,000	1,020	Bid	176,385	\$275	\$41,227,552	\$234	Design/Bid/Build	07-Jun-12	01-May-14	0	100%	\$773,329	1.615%	Landscaping and field installation is complete. Grass stabilization scheduled for Spring of 2016.	\$23,653,420
Marshfield Marshfield High	High School	Brait Builders Ventures	\$84,980,000	1,310	Bid	267,469	\$318	\$64,604,850	\$242	Design/Bid/Build	16-Aug-12	01-Jun-14	0	99%	\$2,201,308	2.766%	Site work has been completed, the project is progressing towards closeout.	\$46,550,599
Monomoy Monomoy Regional High School	High School	Fontaine Brothers, Inc.	\$49,374,000	700	Bid	168,000	\$294	\$41,433,695	\$247	Design/Bid/Build	11-Feb-13	02-Sep-14	0	99%	\$1,175,288	2.448%	Remaining change order work, punch list items and Mechanical Equipment issues are being addressed.	\$27,654,507
North Adams Silvio O Conte Middle	Middle School	PDS Engineering and Construction, Inc.	\$21,877,496	310	Bid	78,119	\$280	\$17,831,491	\$228	Design/Bid/Build	28-Apr-14	03-Dec-15	0	99%	\$2,162,137	9.883%	Work proceeding on punch list, warranty, and open commissioning items.	\$20,508,670
North Middlesex North Middlesex Reg	High School	CTA Construction Co., Inc.	\$68,829,726	870	Bid	180,530	\$381	\$44,223,062	\$245	Design/Bid/Build	25-May-15	14-Jul-17	0	29%	\$129,046	0.188%	Slab on grade installation complete. Roofing and light gage metal framing continues. First and second floor above ceiling MEP rough-ins have started.	\$38,471,881
Northborough Lincoln Street	Elementary School	Brait Builders Corp.	\$18,450,000	270	Bid	52,920	\$349	\$14,514,966	\$274	Design/Bid/Build	27-Apr-15	01-Sep-16	0	89%	\$49,031	0.266%	Phase II renovation continues and includes interior painting, ceiling grid and tile installations and the installation of architectural finishes. Phase III demo and structural steel begins. Phase II punch list and Phase III slab pour, interior wall construction ongoing.	\$9,925,570
Peabody J Henry Higgins Middle	Middle School	Bacon-Agostini Construction Joint Venture	\$70,679,700	1,340	Bid	227,314	\$311	\$52,186,177	\$230	Design/Bid/Build	10-Mar-14	30-Jun-16	33 behind	87%	\$292,159	0.413%	The classroom wing is now punch out. Admin is 90% ready for punch out. The main lobby finishes are in progress. Gym bleachers installed. Auditorium finishes are in progress. Sidewalks and pavement around the new building are in progress. Furniture is moving in. Abatement of the old building starts mid July. The delay in substantial completion was caused mainly by the Verizon strike delayed the elevator completion (telephone lines are not installed), and the Peabody Fire Department requested a duct smoke velocity test, which is a recent code requirement and takes time to complete.	\$38,652,137
Plymouth Plymouth South High	High School	Bacon-Agostini Construction Joint Venture	\$88,163,542	1,005	Bid	248,081	\$355	\$60,612,309	\$244	Design/Bid/Build	06-Jul-15	05-May-17	0	33%	\$9,533	0.011%	Roofing and spray-on fireproofing is substantially complete. Perimeter metal framing and sheathing continues with interior metal framing to follow. Structural steel punchlist continues as required. The contractor continues with underground plumbing and electrical in west portion of the building. Slab on grade in east portion of the building is complete. Masonry contractor continues to install air vapor barrier and interior masonry walls. Mechanical ductwork and piping was started behind sequence of the interior framing. Rough electrical continues. The contractor continues with site utility work and site work requirements for the football field, track, and half-time facility.	\$45,733,725
Provincetown Provincetown High	High School	E. Amanti & Sons, Inc.	\$0		PFA	62,645	\$0	\$0	\$0	Design/Bid/Build	14-Mar-16	31-Oct-16	0	15%	\$65,366	0.000%	Site work and exterior underground utility work ongoing. Above ceiling demolition within the School began on second shift but transitioned to full time with the completion of the academic calendar. All work to follow after students leave the building for vacation.	\$3,378,104
Revere Staff Sergeant James J. Hill School	Elementary School	CTA Construction Co., Inc.	\$31,975,839	690	Bid	103,650	\$308	\$27,439,789	\$265	Design/Bid/Build	25-Mar-14	17-Aug-15	0	99%	\$1,110,455	3.473%	The contractor is in the process of completing work to close out the project including punch list items.	\$28,099,048
Scituate Gates Intermediate School	Middle School	Bacon-Agostini Construction Joint Venture	\$61,980,444	710	PFA	164,803	\$376	\$43,653,890	\$265	Design/Bid/Build	08-Dec-15	26-Jul-17	0	21%	\$0	0.000%	The foundation for the High School Auditorium is complete, structural steel erection is 90% complete and CMU walls in progress. The foundation for the Middle School Classroom Areas (A, B, C) is 95% complete and structural steel erection and the underground plumbing and electrical are in progress. The MEP trades have completed their selective demolition in Middle School Music, Gym and Cafeteria, Areas D & E. The site utilities are in progress.	\$20,603,507
Somerset-Berkley Somerset-Berkley High	High School	Bacon-Agostini Construction Joint Venture	\$69,407,000	1,000	Bid	222,826	\$311	\$52,553,676	\$236	Design/Bid/Build	16-Jul-12	20-Jun-14	0	99%	\$842,373	1.280%	Phase III site restoration work has resumed and will be complete in May. Final acceptance will be based on lawn and field growth to be evaluated in the summer.	\$46,722,150
South Hadley Plains Elementary	Elementary School	Fontaine Brothers, Inc.	\$21,391,144	270	Bid	63,377	\$338	\$17,380,907	\$274	Design/Bid/Build	08-May-14	04-Sep-15	0	98%	\$1,671,680	7.815%	Through May 2016: Phase II site work prep for paving, install drainage, site lighting, landscaping, and concrete sidewalk), project system commissioning testing, punch list work. Anticipate Phase II substantial complete by 7/1/16.	\$13,676,432
Wachusett Mountview Middle	Middle School	CTA Construction Co., Inc.	\$43,122,257	800	Bid	126,200	\$342	\$28,959,805	\$229	Design/Bid/Build	21-May-14	11-Apr-16	0	87%	\$469,839	1.090%	The new Mountview Middle School was opened on schedule. Punch list and commissioning items remain and are progressing. Abatement and demolition of the old middle school is underway.	\$24,279,591
Webster Park Avenue Elementary	Elementary School	CTA Construction Co., Inc.	\$32,370,001	720	Bid	109,597	\$295	\$24,190,915	\$221	Design/Bid/Build	08-Jul-13	06-Feb-15	0	99%	\$1,115,165	3.523%	Remaining work to be completed includes miscellaneous punch list items.	\$28,102,666
West Bridgewater West Bridgewater Jr-Sr	Junior High School	CTA Construction Co., Inc.	\$46,267,000	625	Bid	141,250	\$328	\$34,404,274	\$244	Design/Bid/Build	01-Oct-13	09-Jul-15	0	95%	\$307,797	0.678%	Work continues on the punch list as well as completion of sound, security and fire alarm systems. Demolition and abatement of the existing school is complete.	\$26,385,058
Westfield Abner Gibbs	Elementary School	Fontaine Brothers, Inc.	\$25,578,000	600	Bid	95,573	\$268	\$21,444,000	\$224	Design/Bid/Build	24-Aug-12	01-Jun-16	0	2%	\$0	0.000%	Work stoppage due to preliminary injunction based upon project site status as Article 97 "Protected Land". Preliminary Injunction vacated but city awaiting National Park Service approval for use of site. The General Contractor has demobilized from the site. The project team is working on closing out the General Contractor's contract.	
Auburn Auburn Middle	Middle School	Fontaine Brothers, Inc.	\$36,412,806	560	Bid	100,395	\$363	\$23,350,958	\$233	CM-at-Risk	27-Feb-14	07-Jul-15	0	99%	(\$142,380)	-0.401%	Closeout phase continues. Contractor continue close out punch list items. The team is close to being able to schedule a recommissioning process.	\$19,761,870
Ayer-Shirley Ayer-Shirley Regional Middle/High School	High School	Consigli Construction Company, Inc.	\$44,516,576	495	Bid	144,072	\$309	\$32,082,505	\$223	CM-at-Risk	19-Feb-13	31-Aug-15	0	100%	\$1,351,635	3.046%	This is a 6-phase Addition/Renovation project which is wrapping up some final punch list items as well as some commissioning items as well.	\$34,704,031
Boston Dearborn	Middle School	Gibane Building Company	\$60,245,740	600	PFA	128,304	\$470	\$36,655,002	\$286	CM-at-Risk	08-Sep-15	28-Jun-17	0	15%	\$36,718,170	60.947%	Steel erection is ongoing. Slab placement to commence by end of June.	\$36,615,390
Chelsea Clark Avenue School	Middle School	W. T. Rich Company Inc.	\$46,046,367	670	Bid	115,235	\$400	\$29,311,076	\$254	CM-at-Risk	23-Feb-15	29-Jun-18	0	38%	\$20,987	0.046%	Exterior envelope progressing around the Phase 1 building, with the vapor barrier complete and masonry underway. Window installation has begun. Inside the building work is proceeding on all floors with drywall installation and mechanical/electrical trades proceeding with rough ins. Fireproofing has progressed, both spray fireproofing and intumescent for exposed areas. The new boilers and switchgear have been installed.	\$36,163,680

**Projects in Construction
MSBA Grant Basis and Maximum Grant Amount
Data Reported as of June 29, 2016**

Duxbury Duxbury High	Junior High School	Dimeo Construction Company	\$105,475,520	1,735	Bid	322,105	\$327	\$73,368,123	\$228	CM-at-Risk	12-Sep-12	09-Jun-14	0	99%	\$6,123,067	6.149%	Completed work on drainage modifications & some landscaping activity.	\$48,141,830
Essex Agr Tech Essex Agr and Tech Inst	Vocational / Technical	Gilbane Building Company	\$110,217,451	1,440	Bid	337,000	\$327	\$79,334,889	\$235	CM-at-Risk	07-May-12	27-Aug-14	0	99%	\$3,012,189	2.733%	Remaining miscellaneous punch list work to be completed over the Summer months.	\$72,471,233
Gloucester West Parish	Elementary School	W. T. Rich Company Inc.	\$29,995,466	355	Bid	65,679	\$457	\$18,591,872	\$283	CM-at-Risk	07-Jul-14	15-Jul-16	0	92%	\$191,677	0.639%	The Gloucester West Parish school building is now in punch list phase for both the academic and Gym, cafeteria and arts buildings. Final cleaning, furniture and equipment deliveries are now in progress throughout both buildings. Site work is in progress and includes play field seeding, tree planting and concrete curb pouring.	\$14,673,132
Greater Lowell Voc Tec Gr Lowell Reg Voc Tech	Vocational / Technical	Consigli Construction Company, Inc.	\$52,472,010	1,990	Bid	505,766	\$104	\$38,997,643	\$77	CM-at-Risk	04-Nov-13	31-Aug-15	0	99%	\$4,007,321	7.637%	All work that was included in the original 3-phase project scope is complete other than punch list items, commissioning and close out. The District has elected to use some of the savings to renovate the original school kitchen which was not part of the original scope. This space will be re-purposed to expand the culinary arts program. Work on the kitchen is wrapping up and is scheduled for completion early Summer of 2016.	\$45,839,013
Greenfield Greenfield High	High School	Shawmut Design and Construction	\$53,507,787	585	Bid	160,650	\$333	\$37,812,150	\$235	CM-at-Risk	27-Mar-13	31-Oct-15	0	100%	\$1,052,028	1.966%	Construction is complete, the project is in the closeout phase.	\$42,146,257
Haverhill Caleb Dustin Hunking	Middle School	Shawmut Design and Construction	\$49,544,769	1,005	Bid	147,996	\$335	\$35,181,852	\$238	CM-at-Risk	20-Apr-15	30-Dec-16	0	65%	\$968,538	1.955%	Finish work is ongoing in all areas of the building. All door frames have been installed. Acoustical ceiling grid and tile installations continue. Curtain wall, window and skylight testing have commenced. Installation of water feature in lobby to commence in the near future. Abatement of certain areas of the existing school building has begun.	\$39,518,874
Holbrook Holbrook Jr Sr High	High School	Consigli Construction Company, Inc.	\$79,835,240	1,095	PFA	217,353	\$367	\$50,611,105	\$233	CM-at-Risk	24-Jun-15	05-Jun-17	0	25%	\$351,009	0.440%	Building A exterior brick work nearly complete. Building C brick work to commence in the near future. Windows are due on site in July. Building A rough-ins are nearly complete. Under-slab plumbing is complete. Slab installations are nearly complete.	\$54,644,960
Lunenburg Lunenburg High	Junior High School	Shawmut Design and Construction	\$57,994,017	820	Bid	169,018	\$343	\$41,982,415	\$248	CM-at-Risk	15-Aug-14	30-Jun-16	0	86%	\$1,002,162	1.728%	Project reached substantial completion. Demolition and abatement of the former school is underway.	\$34,122,826
Lynn Thurgood Marshall Mid	Middle School	Walsh Brothers, Inc.	\$71,225,244	1,100	Bid	181,847	\$392	\$56,105,148	\$309	CM-at-Risk	27-Jun-14	06-Jun-16	47 ahead	100%	\$0	0.000%	This project reached substantial completion on April 20, 2016. Site work is now complete and they plan to demobilize within the next two weeks. The project team will begin Demo at the site of the original Thurgood Marshall MS site in late July.	\$49,541,568
Milford Woodland	Elementary School	Shawmut Design and Construction	\$48,375,101	985	Bid	132,539	\$365	\$34,861,130	\$263	CM-at-Risk	01-Apr-15	28-Jul-16	0	86%	\$848,009	1.753%	The Woodland school Gym and academic buildings are now in punch list phase while the Administration, arts and cafeteria building is in final finishes work. Testing and balancing of building systems is ongoing. Site work includes forming and pouring of concrete curbs, tree planting and seeding and turf mock-up. Existing school demo and abatement has started.	\$27,418,234
Newton A E Angier	Elementary School	W. T. Rich Company Inc.	\$30,158,875	465	Bid	74,960	\$402	\$19,837,027	\$265	CM-at-Risk	22-Aug-14	04-Jan-16	0	95%	\$169,720	0.648%	Contractor is continuing to address items on the punch list and is working to prepare a schedule for summer work activities, including the playground surfacing and the gym flooring.	\$10,687,077
North Reading North Reading High	Junior High School	Gilbane Building Company	\$101,328,353	1,370	Bid	267,939	\$378	\$66,726,592	\$249	CM-at-Risk	01-May-12	21-Aug-15	0	99%	\$3,521,877	3.476%	Punch list items including site work, warranty items, and commissioning closeout items are underway and remain for completion.	\$47,071,882
Pittsfield Taconic High	High School	Gilbane Building Company	\$97,757,373	920	PFA	246,520	\$397	\$56,984,184	\$231	CM-at-Risk	21-Mar-16	29-Jun-18	0	2%	\$0	0.000%	Early site work package scope continues, and excavation to building subgrade is mostly complete. Formwork and placement of concrete footings has begun. Site drainage installation is progressing.	\$72,491,194
Southern Worcester Cty VT Bay Path Reg Voc Tech H S	Vocational / Technical	Consigli Construction Company, Inc.	\$57,024,455	1,110	Bid	249,521	\$229	\$41,468,049	\$166	CM-at-Risk	02-Aug-13	01-Sep-15	0	100%	\$4,402,328	7.772%	Phase 10 of a 10-phase project has been completed. Items remaining include minor punch list items, final commissioning and close out.	\$44,420,530
Springfield Elias Brookings	Elementary School	Morganti/Aquadro & Cerruti	\$22,733,394	320	Bid	64,800	\$351	\$18,337,328	\$283	CM-at-Risk	01-Jul-13	12-Feb-15	0	100%	(\$127,976)	-0.563%	Remaining punch list and warranty issues are being addressed.	\$25,563,992
Wilmington Wilmington High	High School	Gilbane Building Company	\$67,558,835	960	Bid	192,443	\$351	\$48,060,314	\$250	CM-at-Risk	30-Apr-13	12-Feb-15	0	97%	\$2,793,305	4.323%	The project is wrapping up some final punch list items as well as some commissioning items as well.	\$35,674,893
Winchester Winchester High School	High School	Consigli Construction Company, Inc.	\$101,404,577	1,370	Bid	278,925	\$364	\$70,862,283	\$254	CM-at-Risk	23-Apr-14	31-Aug-17	0	84%	\$4,365,009	4.305%	Phase 1 construction of a new main entrance, administration offices, music wing, kitchen, cafeteria, and media center is complete and in service. Completion of renovations to the auditorium has been delayed from September 1, 2015 to September 1, 2016. Phase 2 renovations are in process and are scheduled for completion in August of 2016. Phase 3 renovations are scheduled for completion in August of 2017.	\$41,246,371
Winthrop Winthrop Sr High	Junior High School	Gilbane Building Company	\$63,542,179	970	Bid	187,917	\$338	\$42,616,843	\$227	CM-at-Risk	01-Jul-14	30-Jun-16	0	93%	\$845,777	1.331%	Interior finish work is mostly complete on the second and third floors and close to complete on the first floor. The auditorium HVAC work is ongoing, the finishes and the seating installation is in progress. The science lab furniture installation is close to complete and the delivery of the classroom furniture is ongoing.	\$38,996,995
Worcester Nelson Place	Elementary School	Fontaine Brothers, Inc.	\$46,546,300	600	PFA	111,256	\$418	\$29,503,564	\$265	CM-at-Risk	01-Jul-15	01-Jun-17	0	20%	\$0	0.000%	Foundations and structural steel are approximately 95% complete. Slab on deck at Classroom Wing Building C Main Level is in place, slabs for Classroom Wing Building A and Gym and Auditorium Building B to follow. Roofing and exterior framing subcontractors have mobilized and have started layout and blocking. MEP trades have begun preliminary rough in including sleeves and layout. Utility installation around the future school continues, including connections at the street, now that school is out for the summer.	\$33,717,513
Waitlist Totals			\$8,769,008				\$136	\$107										\$10,131,806
New Bedford Taylor School at the Sea Lab Marine Science Education Center	N/A	M. O'Connor Contracting, Inc.	\$8,769,008	284	PFA	64,533	\$136	\$6,908,790	\$107	Design/Bid/Build	28-Nov-15	15-Aug-16	25 behind	57%	\$270,133	3.081%	Steel work that was delayed because utilities could not be removed, was completed in June. Installation of temporary walls allowed certain work to progress to mitigate the impact of the schedule delay. Roof work, siding installation and site work continue. Interior MEP rough-ins as well as drywall installation are ongoing.	\$10,131,806