

Massachusetts School Building Authority

# CAPITAL PLANNING PROJECT OVERVIEW REPORT

October 4, 2017

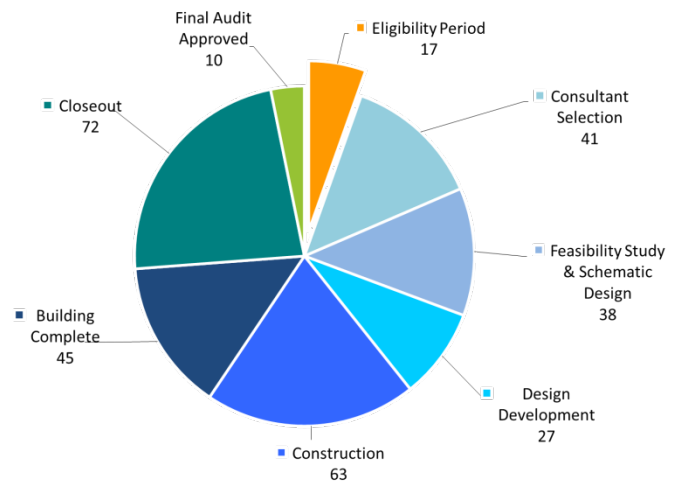
# TABLE OF CONTENTS

<b>Capital Pipeline Overview .....</b>	<b>2-3</b>
<b>Statements of Interest (SOIs) .....</b>	<b>4</b>
<b>Core Program .....</b>	<b>5-14</b>
Eligibility Period .....	5
Consultant Selection .....	6-7
Feasibility Study .....	8
Schematic Design .....	9
Commissioning .....	10
Design Development .....	11
Summary of Bid Data .....	12
Construction .....	13-14
<b>Accelerated Repair Program .....</b>	<b>15-18</b>
<b>Project Variances .....</b>	<b>19-20</b>
<i>Appendices</i>	
(A) <i>Project Status List</i>	
(B) <i>2017 and 2018 Estimated Bid Dates</i>	
(C) <i>Construction Status Report</i>	
(D) <i>Construction Cost Chart</i>	
(E) <i>FY18 Projects Substantially Complete</i>	

# CAPITAL PIPELINE OVERVIEW

## Status of Current Projects

A total of 313 projects that have received invitations from the Board of Directors (“Board”) to collaborate with the Massachusetts School Building Authority (“MSBA”) are currently in the MSBA’s Eligibility Period and Capital Pipeline. The summary chart provides the number of projects in Eligibility Period and each phase of the Capital Pipeline. For a detailed look at the Capital Pipeline projects, please go to [www.massschoolbuildings.org/building](http://www.massschoolbuildings.org/building) and select “Capital Pipeline Status Chart”.



## Capital Planning Updates:

This Project Overview Report has been updated to include historical information on SOI applications (see page 4) and includes two new attachments: 1) Attachment D, Construction Cost Chart (see page 12 for further details); and 2) Attachment E, Projects Substantially Complete in FY 18.

The following activities are scheduled for FY 18:

- The final School Survey Report will be included as part of the October 25, 2017 Board package and is ready for distribution.
- The recommendation for the selection of MSBA Commissioning Consultants is anticipated for the December 2017 Board of Directors meeting.
- An informational update on the selection of Owner’s Project Managers and Designers for the Accelerated Repair Program is anticipated at the February 2018 Board of Directors meeting.
- The recommendation for invitation to Eligibility Period for the 2017 SOI applications for Core Program is anticipated at the November Facilities Assessment Subcommittee meetings with recommendations at the December 2017 Board of Directors meeting.
- A staff update and recommendation for construction cost per square foot funding limit is anticipated at the December 2017 or February 2018 Board of Directors meeting.
- The opening for 2018 SOIs for Core Program and Accelerated Repair Program is anticipated in January 2018.
- Staff will be procuring a consultant to review guidelines for science labs for elementary and middle schools and to recommend updates to the high school guidelines to align with the Next Generation Science Standards in the second half of FY 18.
- Updates to staff reviews for changes associated with limited scope repair projects, updates to the Educational Profile Questionnaire and post-occupancy review are anticipated in the second half of FY 18.

## 2017 Progress Report

- Statement of Interest (“SOI”) 2017
  - The 2017 SOI submittal period opened on January 6, 2017 and closed on February 17, 2017 for the Accelerated Repair Program (“ARP”) and April 7, 2017 for the Core Program. The current status is as follows:
    - Recommendations for invitation to the ARP were forwarded at the May 12, 2017 and June 28, 2017 Board meeting.
    - Recommendations for Senior Study Visits were forwarded at the June 28, 2017 Board meeting with visits underway. Visits are anticipated to conclude October 13, 2017. 83 SOIs were received for the Core Program. Recommendations for invitation are anticipated at the December 13, 2017 Board Meeting.
- Eligibility Period
  - There are 17 districts in Eligibility Period. Four districts are anticipated for invitation to Feasibility Study at the October 25, 2017 Board Meeting.
- Feasibility Study/Schematic Design
  - Three districts received MSBA approval for selection of an Owner’s Project Manager (“OPM”).
  - Three districts completed Designer Selection.
  - Nine districts are anticipating submittals for the preferred schematic solutions between October 2017 and February 2018.
  - Nine districts are anticipating submittals for Project Funding Agreements between October 2017 and February 2018.
- Accelerated Repair Program (“ARP”)
  - No actions anticipated for Project Funding Agreements until Fall 2017.
- Construction Costs – Core Program
  - MSBA staff anticipates 11 projects will bid in 2017.
    - Of the 11 bids and/or executions of a GMP projected to bid in 2017, seven projects have completed the bidding process. Six of the seven bids were within the estimated budget.
  - MSBA staff anticipates six projects will bid in 2018.
- Substantial Completion
  - Ten projects are projected to reach substantial completion in 2017. Eight projects have reached substantial completion.

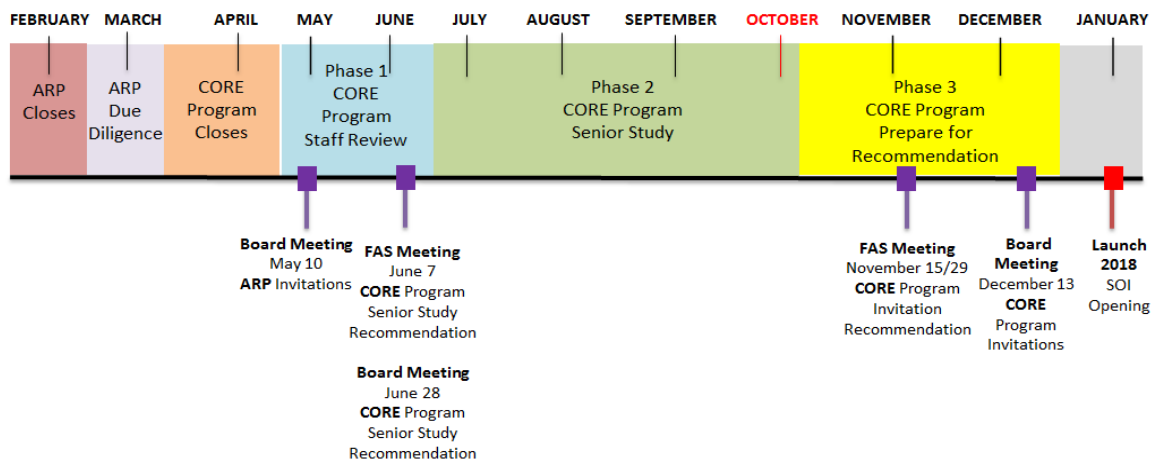
# STATEMENTS OF INTEREST (SOIs)

## 2017 SOI Process

The 2017 SOI submittal period opened on January 6, 2017. The deadline to file SOIs for consideration in the ARP, which is primarily for the repair and/or replacement of roofs, windows/doors, and/or boilers in an otherwise structurally sound facility ended on February 17, 2017. Given the potential budget impact from the 69 qualifying SOIs filed for the ARP program in 2017, MSBA staff's recommendation to limit the number of ARP invitations this year for systems of 30 years or more was approved at the May 12, 2017 Board meeting. 36 of the 69 schools for which qualifying SOIs were received were approved at the May 12, 2017 and June 28, 2017 Board meetings.

The 2017 SOI submittal to file SOIs for consideration in the Core Program, which is primarily for projects beyond the scope of ARP, including extensive repairs, renovations, addition/renovations, and new school construction opened on January 6, 2017 and ended Friday, April 7, 2017, with due diligence on the 83 submittals underway. Recommendation of Senior Study candidates were presented at the June 7, 2017 Facilities Assessment Subcommittee and the June 28, 2017 Board meeting, with visits to be complete by mid-October 2017. Recommendations for invitation are anticipated at the December 13, 2017 Board meeting.

## 2017 STATEMENT OF INTEREST Overview SCHEDULE



# CORE PROGRAM

## ELIGIBILITY PERIOD

There are 17 districts in Eligibility Period, with eight districts having secured their funding.

An agreed-upon enrollment is a key pre-requisite for the MSBA to commence a Feasibility Study with a district. To begin the enrollment projection process, a district must file enrollment information utilizing the MSBA's online enrollment projection tool. All of the districts currently in Eligibility Period have completed their online enrollment projection information.

District	School	Eligibility Period Commencement Date	30 days	60 days	90 days		180 days		270 days	Date of Invitation to Feasibility Study (Estimated)
			ICC	SBC	Online Enrollment Projection Info	Ed Profile Questionnaire	Maintenance Documents	Enrollment Certification	Local Authorization	
Bridgewater-Raynham	Mitchell ES	3/1/2017	X	X	X	X	X	X	X	Oct. 17
Leicester	Leicester Middle School	3/1/2017	X	X	X	X	X		X	Dec. 17
Millbury	Raymond E. Shaw ES	3/1/2017	X	X	X	X	X	X	X	Oct. 17
Westborough	Annie E. Fales ES	3/1/2017	X	X	X	X	X	X	X	Oct. 17
Acton-Boxborough	CT Douglas ES	4/3/2017	X	X	X	X				TBD
Easton	Center School	4/3/2017	X	X	X	X	X			Dec. 17
Gloucester	East Gloucester ES	4/3/2017	X	X	X	X	X			TBD
Rockland	Jefferson ES	4/3/2017	X	X	X	X			X	Dec. 17
Sharon	Sharon HS	4/3/2017	X	X	X	X				Dec. 17
Fitchburg	Crocker ES	5/1/2017	X	X	X	X				Feb. 18
Gardner	Waterford Street ES	5/1/2017	X	X	X	X	X	X	X	Oct. 17
Lawrence	Oliver Partnership School	5/1/2017	X	X	X	X	X		X	Feb. 18
Orange	Dexter Park School	5/1/2017	X	X	X	X				Feb. 18
Braintree	South MS	6/1/2017	X	X	X	X				TBD
Nauset RSD	Nauset Regional HS	6/1/2017	X	X	X	X			X	Dec. 17
Springfield	Deberry ES	6/1/2017	X	X	X	X	X			TBD
Worcester	Doherty Memorial HS	6/1/2017	X	X	X	X				TBD

**CONSULTANT SELECTION**

**Owner’s Project Manager (“OPM”) Selection**

After the district has completed all Eligibility Period requirements and has received a Board Invitation to Feasibility Study, the district procures an OPM. Since the last report, three districts have completed their OPM selection (shaded in the table below). Currently, there is one district in the Capital Pipeline that is in the process of procuring an OPM.

District	School	Anticipated Selection
Holyoke	Lt. Elmer J. McMahon ES	August 2017
Central Berkshire	Wahconah RHS	September 2017
West Springfield	Coburn ES	September 2017
Amesbury	Amesbury ES	October 2017

### Designer Selection

After a district has selected and executed a contract with an OPM, the district selects a Designer by utilizing either a local designer selection process for projects under \$5 million or the MSBA’s Designer Selection Panel (“DSP”) for projects over \$5 million. Since the last report, three districts have completed their Designer selection (shaded in the table below). There are currently seven districts in the Capital Pipeline that are in the process of procuring a Designer.

District	School	Anticipated Selection
Framingham	Fuller Middle School	August 2017
Pentucket	Pentucket RHS	August 2017
Springfield	Brightwood ES	August 2017
Arlington	Arlington HS	October 2017
Danvers	Ivan G Smith ES	October 2017
Wareham	Minot Forest	October 2017
Holyoke	H.B. Lawrence	November 2017
Tewksbury	Louise Davy Trahan ES	November 2017
Central Berkshire	Wahconah RHS	December 2017
West Springfield	Coburn ES	December 2017

For additional information on the selected consultant teams, see Appendix A.



**FEASIBILITY STUDY**

Once a district has procured an OPM and Designer, the district and the district’s consultants must complete two Feasibility Study submittals, the Preliminary Design Program, and the Preferred Schematic Report, prior to Board consideration to proceed into Schematic Design. Based on the most recent data and schedules provided to the MSBA by districts, the MSBA anticipates that nine districts will appear before the board for their Preferred Schematic Designs authorizations at the October, December and February Board Meetings.

District	School	Anticipated PS Board Date
Bristol County	Bristol County Agriculture HS	October 2017
Marlborough	Richer ES	October 2017
Natick	John F Kennedy MS	October 2017
Easthampton	Maple ES	December 2017
Ipswich	Winthrop ES	December 2017
Lowell	Lowell HS	December 2017
Ludlow	Chapin Street ES	December 2017
Foxborough	Mabelle M. Burrell ES	February 2018
Northbridge	Balmer ES	February 2018

**SCHEMATIC DESIGN**

Prior to consideration by the Board for Project Scope and Budget Agreement authorization, a district must submit a Schematic Design to the MSBA for review. Based on the most recent data and schedules provided to the MSBA by districts, the MSBA anticipates that nine districts will appear before the Board for Project Scope and Budget Agreement authorization at the upcoming October, December and February Board Meetings.

District	School	Anticipated PS&B Board Date
Middleborough	Middleborough HS	October 2017
Westport	Westport MS	December 2017
Boston	Josiah Quincy Upper School	December 2017
Attleboro	Attleboro HS	December 2017
Boston	Boston Arts Academy	December 2017
Taunton	Mulcahey ES	December 2017
Worcester	South High Community School	December 2017
Fall River	BMC Durfee HS	February 2018
Tisbury	Tisbury ES	February 2018

## COMMISSIONING

The MSBA assigns a Commissioning Consultant after a district has secured local funding for the Board approved project. Since the last report, the MSBA has assigned Commissioning Consultants to four additional projects presented in the table below.

District	School	Program	Estimated Const. Cost (million)	Commissioning Consultant	Contract Amount
Saugus	Saugus High School	Core	\$120.0	Consulting Engineering Services	\$209,874
Braintree	East Middle School	Core	\$12.0	Fitzemeyer & Tocci Associates	\$143,851
Triton	Pine Grove School	Core	\$25.0	BVH Integrated Services	\$91,180
Quaboag Regional	Warren ES Windows	2016 ARP	\$0.8	Colliers International	\$19,796

To date, the MSBA has executed 410 Commissioning Consultant contracts, totaling \$29.3 million. To date, 280 contracts have been completed.

The table below represents the status of commissioning assignments sorted by the fiscal year in which the commissioning work orders were issued.

Fiscal Year	No. Work Orders Issued	Value of Work Orders Issued	Total Invoiced*	Percent Complete
FY10	31	\$4,231,376	\$4,273,277	100%
FY11	95	\$6,132,890	\$6,058,460	99%
FY12	52	\$4,450,761	\$4,386,520	99%
FY13	55	\$3,364,697	\$3,403,290	100%
FY14	47	\$2,604,062	\$2,500,457	96%
FY15	44	\$2,277,711	\$1,955,173	86%
FY16	44	\$3,385,137	\$1,671,529	49%
FY17	37	\$2,290,661	\$480,190	21%
FY 18	5	\$558,147	\$0	0%
<b>Total</b>	<b>410</b>	<b>\$29,295,442</b>	<b>\$24,728,895</b>	

\*Includes approved additional services over value of Work Order

**DESIGN DEVELOPMENT**

After a district has secured local funding and has entered into a Project Funding Agreement (“PFA”) with the MSBA, the district enters into the Design Development Phase. Currently, there are 27 projects in the Design Development Phase with a total estimated construction cost of approximately \$614 million. Of those 27 projects, 20 are ARP Projects and 7 are Core Program Projects. The 7 Core Program Projects in Design Development have a total estimated construction cost of approximately \$538 million and are listed below.

Elementary School Districts	Middle School Districts	High School Districts	Other Grade Configurations
Bourne (3-5) Narragansett RSD (PK-5) Needham (K-5)	Braintree (5-8) Triton (PK-6)	Somerville (9-12)	Saugus (6-12)

**District Design Submittals**

During Design Development, districts submit three design submittals (Design Development, 60% Construction Documents, and 90% Construction Documents) for MSBA review. MSBA staff review documents to ensure the project is still in compliance with the PFA. The chart below indicates the number of submittals received and reviewed by the MSBA to date by type and by fiscal year.

Fiscal Year	DD Reviews	60% Reviews	90% Reviews	Total Reviews
2010	5	0	0	5
2011	21	24	20	65
2012	12	24	28	64
2013	20	20	19	59
2014	15	13	14	42
2015	6	12	13	31
2016	10	10	8	28
2017	11	10	12	33
2018	1	3	2	6
<b>Totals</b>	<b>101</b>	<b>116</b>	<b>116</b>	<b>333</b>

**SUMMARY OF BID DATA**

Based on the most recent data and schedules provided by the districts, 11 projects are scheduled to bid in 2017, and six projects are scheduled to bid in 2018.

Year	Number of Projects	Design Basis for Enrollment	Project Budget	Construction Budget
2017	11	6,780	\$724.71 million	\$564.72 million
2018	6	5,688	\$736.83 million	\$586.46 million
Grand Total	17	12,468	\$1.46 billion	\$1.15 billion

*Note: These numbers are based on preliminary information received from the District and are subject to further review and calculation.*

**CONSTRUCTION COSTS FY09 to FY17 – ATTACHMENT D**

This Project Overview Report includes Attachment D, School Construction Costs Compared to Common Economic Indicators. This chart includes construction bids received from FY 09 through FY 17 and has been previously presented as part of the MSBA’s review of the funding limit for construction cost per square foot. In addition to including the bid information, this chart has now been expanded to include the construction costs per square foot estimated at preferred schematic and at schematic design as projected for projects recently approved by the Board and expected to bid in FY 18 and FY 19. Staff have also provided an inset with a closer look comparing the schematic design estimates to the bids received for FY 16 and FY 17. Staff anticipate reviewing this chart as part of the October 25, 2017 Board meeting.

**CONSTRUCTION**

When a district issues a Notice to Proceed, the project is advanced to the Construction Phase. Currently, there are 62 projects in the Construction Phase with a total estimated construction cost of \$1.16 billion. Of those 62 projects, 44 are ARP Projects, and 19 are Core Program Projects. This does not include the 45 projects that have reached substantial completion and are currently in the Building Complete Phase. The 19 Core Program Projects have a total estimated construction cost of \$1.08 billion and are listed below.

Elementary School Districts	Middle and Middle/High School Districts	High School Districts	Other Grade Configurations
Carver (PK-5)	<b><u>Middle School Districts</u></b>	Minuteman RSD (9-12)	Dedham (PK-K)
Granby (PK-3)	Beverly (5-8)	Mt. Greylock RSD (9-12)	Billerica (PK; 8-12)
Hanover (2-4)	Chelsea (5-8)	Pittsfield (9-12)	Brookline (K-8)
Hopkinton (PK-1)	Quincy (5-8)	Stoughton (9-12)	
New Bedford (PK-5)	<b><u>Middle/High School Districts</u></b>		
Newton (K-5)	Boston - Dearborn MS (6-12)		
Westfield* (K-5)			
Woburn (K-5)			

*\*Note: Westfield, Abner Gibbs Elementary School, stopped construction in December of 2012 due to a preliminary injunction based upon project site status as Article 97 "Protected Land". The Supreme Judicial Court ruled that the proposed site is subject to provisions of Article 97. The MSBA is working with the District and will present its recommendations at the December Board of Directors Meeting.*

**Amendment to the Project Funding Agreement (PFA)**

Upon receipt of construction bids or the execution of a GMP, a district submits the Contractor’s Schedule of Values to the MSBA. MSBA staff and the district collaborate to reconcile the actual construction costs against the estimated construction budget and an amendment to the PFA is executed to reflect bid costs. The chart, shown below, is the number of amendments to PFAs, listed by fiscal year.

Fiscal Year	Total Amendments
FY2012	30
FY2013	31
FY2014	31
FY2015	17
FY2016	22
FY2017	8
FY2018	8

## Substantial Completion

Ten projects are scheduled to reach Substantial Completion in 2017. They are listed in the table below with additional information provided in Attachment E.

Project	Enrollment	Contractor	OPM	Designer	Est. Substantial Completion Date	Actual Substantial Completion Date	Est. Actual Difference (days)
Plymouth Plymouth South HS	1005	Bacon-Agostini	Ted Gentry	Ai3	5/26/17	6/2/17	7
Worcester Nelson Place ES	600	Fontaine Brothers	Tishman	Lamoureux Pagano	5/31/17	5/31/17	0
Abington Frolio Jr HS	870	Brait Builders	KBA	Ai3	6/1/17	5/31/17	-1
Holbrook PreK-12	1095	Consigli	SMMA	Flansburgh	6/15/17	6/15/17	0
North Middlesex Reg. HS	1115	CTA Construction	Heery	SMMA	7/7/17	8/23/17	47
Scituate Gates IS	710	Bacon-Agostini	Daedalus	Dore & Whittier	7/24/17	8/14/17	21
Westborough Sarah W. Gibbons MS	550	Gilbane	Heery	Habeeb & Associates Architects	8/25/17	8/25/17	0
Winchester Winchester HS	1370	Consigli	Skanska	SMMA	9/1/17	8/31/17	-1
New Bedford Hannigan ES	400	H.V. Collins	Daedalus	Turowski2 Architecture	10/2/17*		
Boston Dearborn MS	600	Gilbane	Daedalus	Jonathan Levi	12/27/17		

*\*Project is still in construction and an updated substantial completion date is to be determined.*

For additional information on the construction status of all of these projects, see Appendix C.

# ACCELERATED REPAIR PROGRAM

Currently, there are 255 projects either active or completed in the ARP. The 255 projects are located in 103 districts, many of whom have been invited to ARP multiple times. All new information that has been updated since the last report is italicized.

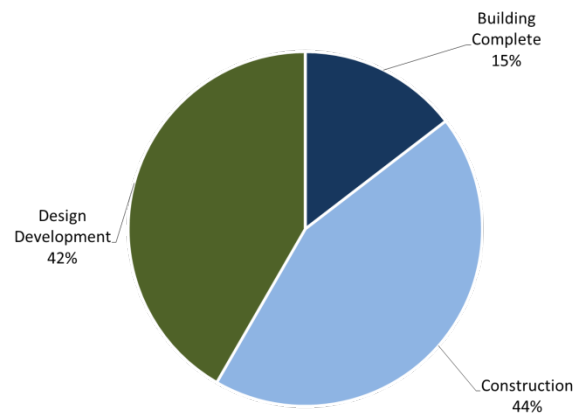
Repair Program	Number of Districts	Number of Projects	Total Project Budgets	Maximum Facilities Grants	Number of Projects Final Audit Approved
2017 Accelerated	20	36	-	-	0
2016 Accelerated	28	48	\$156,598,234	\$83,007,586	0
2015 Accelerated	24	43	\$136,680,652	\$91,974,052	1
2014 Accelerated	34	47	\$108,410,084	\$65,388,035	23
2013 Accelerated	25	45	\$94,650,790	\$54,662,711	34
2012 Accelerated	24	36	\$63,009,653	\$38,267,952	36
Green	93	189	\$366,649,226	\$222,889,218	184

## 2017 Accelerated Repair Program

- Invitations – 20 districts, representing 36 projects
  - Scope includes nine roofs, 23 windows/doors, and 15 boilers

## 2016 Accelerated Repair Program

- Invitations – 28 districts, representing 49 projects
  - Scope includes 25 roofs, 19 windows/doors, and 13 boilers
- SOI Removal - one project
- Approval for Project Funding Agreement - 22 districts, representing 37 projects
- Total Project Budgets - \$156,598,234
- MSBA Total Facilities Grant - \$83,007,586
- Two districts, representing two projects, required a schedule extension following PFA approval
- *18 of 27 projects reporting bid within estimated budget*

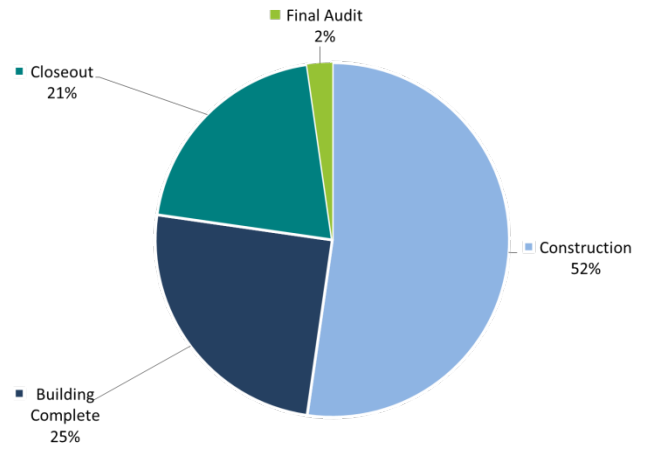


2016 ARP Status Chart



### 2015 Accelerated Repair Program

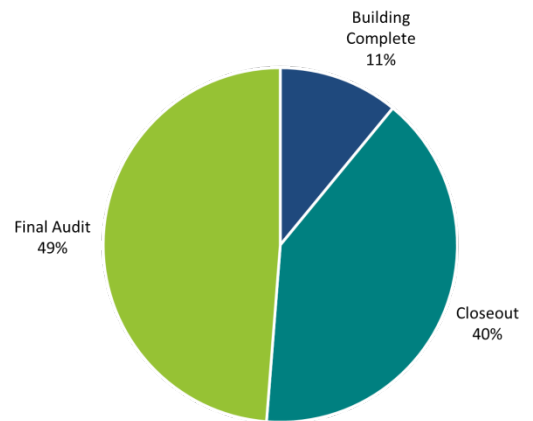
- Invitations – 24 districts, representing 44 projects
  - Scope includes 22 roofs, 26 windows/doors, and nine boilers
- SOI Removal – one project
- Approved for Project Funding Agreements – 24 districts, representing 43 projects
- Total Project Budgets - \$136,680,652
- MSBA Total Facilities Grants - \$91,974,052
- One district, representing one project, required a schedule extension following PFA Approval
- 81% of projects bid within estimated budgets
- *1 project has completed Final Audit*



2015 ARP Status Chart

### 2014 Accelerated Repair Program

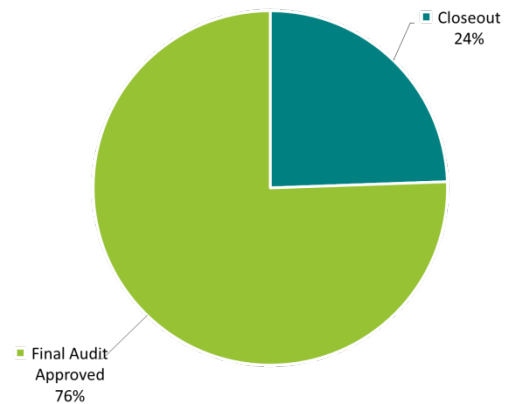
- Invitations – 36 districts, representing 51 projects
- SOI Removal – two districts, representing four projects
- Current 2014 ARP projects – 34 districts, representing 47 projects
  - Scope includes 20 roofs, 25 windows/doors, and 13 boilers
- Approved for Project Funding Agreements – 34 districts, representing 47 projects
- Total Project Budgets - \$108,410,084
- MSBA Total Facilities Grants - \$65,388,035
- Four districts, representing six projects, required schedule extensions following PFA approval
- 85% of projects bid within estimated budget
- *49% of projects have completed Final Audit*



2014 ARP Status Chart

### 2013 Accelerated Repair Program

- Invitations – 28 districts, representing 50 projects
- SOI Removals – three districts, representing five projects
- Approved for Project Funding Agreements – 26 districts, representing 47 projects
- Active Projects – 25 districts, representing 45 projects
  - Scope includes 30 roofs, 13 windows/doors, and seven boilers
- Total Project Budgets – \$94,650,790
- MSBA Total Facilities Grants – \$54,662,711
- Four districts, representing seven projects, required schedule extensions following PFA approval
- 82% of projects bid within estimated budget
- *76% of projects have completed Final Audit*



2013 ARP Status Chart

## 2012 Accelerated Repair Program

- Approved Project Funding Agreements – 24 districts, representing 36 projects
- Scope includes 21 roofs, 11 windows/doors, and seven boilers
- 100% of projects have completed Final Audit
- Final Costs Submitted: \$47,748,996
- Final MSBA Total Facilities Grant: \$28,518,764

## Status of Green Repair Program

The Green Repair Program resulted in PFA authorizations totaling \$366,647,226 in Total Project Costs and \$222,889,218 in MSBA grants. Of the 189 projects, 184 have been approved for final grant payments. The five projects that were not previously approved for final grant payments are substantially complete and require Final Audit.

## 2016 Accelerated Repair Projects – Construction Estimate vs. 2017-2018

- 18 of 27 reported projects bid within the estimated budget
- 8 of the remaining 21 projects will bid by the end of the October 2017 with an update anticipated at the December 2017 Board of Directors Meeting

District	School	Scope	Project Type	Bid Date	Construction Estimate*	Bid Amount*	Variance from Construction Estimate	Reimbursement Rate	Potential Grant Variance**
Carver	Carver Middle/High School	Roof, Partial Windows/Doors Boiler	DBB	Mar-17	\$4,735,668	\$3,770,000	\$965,668	57.74%	\$557,577
Auburn	Pakachoag	Roof	DBB	Mar-17	\$619,654	\$566,000	\$53,654	54.16%	\$29,059
Quincy	Merrymount	Partial Boiler	DBB	Mar-17	\$721,780	\$728,200	-\$6,420	66.12%	\$0
Quincy	Wollaston School	Partial Boiler	DBB	Mar-17	\$602,824	\$614,000	-\$11,136	66.12%	\$0
Quincy	Atherton Hough	Partial Boiler	DBB	Mar-17	\$692,906	\$499,800	\$193,106	66.12%	\$127,682
Quincy	Beechwood Knoll Elementary	Boiler	DBB	Mar-17	\$482,967	\$494,000	-\$11,033	66.12%	\$0
Agawam	Roberta G. Doering Middle School	Boiler	DBB	Apr-17	\$689,889	\$612,868	\$77,021	56.89%	\$43,817
Cambridge	Fletcher/Maynard Academy	Roof	DBB	Apr-17	\$805,564	\$597,500	\$208,154	36.99%	\$76,996
Worcester	Belmont Street Community	Windows/Doors	DBB	Apr-17	\$3,294,328	\$3,305,190	-\$10,862	78.95%	\$0
Worcester	Gerald Creamer Center	Windows/Doors Partial Boiler	DBB	Apr-17	\$2,528,821	\$2,203,200	\$325,621	78.95%	\$257,078
Worcester	Wawecus Road School	Windows/Doors	DBB	Apr-17	\$1,702,141	\$1,755,310	-\$53,169	78.95%	\$0
Worcester	Chandler Elementary Community	Windows/Doors Boilers	DBB	Apr-17	\$1,129,282	\$1,046,800	\$82,482	78.95%	\$65,120
Lawrence	High School Learning Center	Boiler	DBB	Apr-17	\$1,178,258	\$1,014,500	\$163,758	80.0%	\$131,006
Canton	Lt Peter M Hansen	Roof	DBB	May-17	\$1,415,900	\$1,276,150	\$139,750	44.48%	\$62,16
Gloucester	Gloucester High	Roof	DBB	May-17	\$4,229,171	\$2,496,350	\$1,732,821	58.19%	\$1,008,329
Sharon	Heights Elementary	Roof	DBB	May-17	\$1,855,366	\$1,277,000	\$578,366	44.68%	\$258,414
Boston	James Condon Elem	Boiler	DBB	May-17	\$807,582	\$1,683,726	-\$876,144	65.47%	\$0
Boston	William Ellery Channing	Boiler	DBB	May-17	\$739,416	\$811,950	-\$72,534	65.47%	\$0
Boston	Boston Latin	Partial Boiler	DBB	May-17	\$1,557,319	\$1,418,324	\$138,995	65.47%	\$91,000
Boston	Paul A Dever	Roof	DBB	May-17	\$2,409,686	\$1,535,022	\$874,664	65.47%	\$572,643

District	School	Scope	Project Type	Bid Date	Construction Estimate*	Bid Amount*	Variance from Construction Estimate	Reimbursement Rate	Potential Grant Variance**
Boston	John W McCormack	Roof	DBB	May-17	\$2,705,770	\$1,691,978	\$1,013,972	65.47%	\$663,370
Springfield	Mary M Lynch	Roof	DBB	Jun-17	\$1,706,314	\$1,094,000	\$612,314	80.00%	\$489,851
Springfield	Kensington Avenue	Roof	DBB	Jun-17	\$1,142,411	\$1,151,000	-\$8,859	80.00%	\$0
Northampton	Bridge Street	Partial Roof	DBB	Jun-17	\$1,214,654	\$969,012	\$245,642	54.79%	\$134,587
Northampton	Leeds	Partial Roof	DBB	Jun-17	\$1,314,290	\$1,001,190	\$313,100	54.79%	\$171,547
Springfield	Balliet Elementary School	Roof	DBB	Jun-17	\$1,665,757	\$1,688,000	-\$2,243	80.00%	\$0
Dartmouth	Dartmouth Middle	Roof	DBB	Sept-17	\$4,821,349	\$3,361,000	\$1,460,349	53.32%	\$778,658
				<b>Total</b>	<b>\$46,769,197</b>	<b>\$38,642,070</b>	<b>\$8,127,127</b>		<b>\$4,584,997</b>

\*The construction estimate and bid amount do not include pre-construction services and alternatives.

\*\*These numbers are based on preliminary information received from the district and are subject to further review and calculation.

### Accelerated Repair Projects – Schedule Extension Update

The MSBA has granted districts conditional extensions to their PFAs pending compliance with the following stipulations:

- The district must submit a detailed, revised, construction timeline that explains how the work will be completed at each school; and
- Any costs that are related to a district requesting an extension to the construction schedule will be the sole responsibility of the district and those costs are categorically ineligible for reimbursement by the MSBA.

Schedule delays for these districts can be attributed to local funding issues, lead time for windows, and construction delays on site. In no event have the extended schedules resulted in an increase to the Estimated Maximum Total Facilities Grant, as authorized by the Board.

Four of the 48 2016 ARP Projects revised their construction schedule and are scheduled to be completed in 2018. Staff has reported previously on the shaded projects listed below.

District	School	Scope	Original Construction Completion Date	Updated Construction Completion Date	Reason for Schedule Extension
Dartmouth	Dartmouth Middle	Roof	8/30/17	8/30/18	The District and its consultants have determined that bidding for construction in 2018 would better serve the project budget and existing facilities. Construction in 2018 would also better ensure that all abatement work could occur in an unoccupied building.
North Brookfield	North Brookfield Elementary	Roof	9/5/17	8/27/18	The District and its consultants have determined that bidding for construction in 2018 would better serve the project budget and existing facilities.
Marshfield	Furnace Brook Middle	Roof	11/13/17	8/31/18	The District and its consultants have determined that bidding for construction in 2018 would better serve the existing facilities.
Revere	Garfield Elementary School	Boiler	8/25/17	9/14/18	As a result of the initial bids coming in over budget, the District and its consultants have decided to rebid this project. Construction for this project will now take place in 2018.

# PROJECT VARIANCES

## Core Program – Total Project Budget Update

Upon receiving the Board’s approval of the Project Scope and Budget, the MSBA and participating districts enter into a Project Funding Agreement, which establishes the Total Project Budget and the Estimated Maximum Total Facilities Grant for an approved project. Staff has reported on budget increases for the 20 projects shaded below at previous Board Meetings. Project information that is new or updated from the last Board Meeting is un-shaded. In no event has the increase in budget resulted in an increase to the Estimated Maximum Total Facilities Grant, as authorized by the Board. Since the last report, one project has been added to the chart and one project has been updated.

District	School	Scope	Project Funding Agreement		PFA Bid Amendment/ Final Audit		Reason for Increase to Total Project Budget
			Total Project Budget	Total Maximum Facilities Grant	Total Project Budget	Total Maximum Facilities Grant	
Andover	Bancroft ES	New	\$44,659,837	\$16,773,753	\$50,299,859	\$16,575,965	The District has appropriated additional funds to cover the costs associated with increased construction costs and additional contingencies for litigation/settlement costs and other ineligible costs.
Berlin-Boylston	Tahanto Regional HS	New	\$43,954,901	\$21,148,751	TBD	TBD	District submitted final project costs that exceeded the total project budget established at bid. Final Costs did not exceed the original total project budget established at Project Funding Agreement.
Burlington	Marshall Simonds MS	Add/Reno	\$32,865,272	\$17,143,365	\$34,221,929	\$15,362,127	The District appropriated at its May 2012 annual town meeting through Articles 18: 19, additional funds for the costs associated with the construction of the new field complex and field lighting replacement.
Essex North Shore Agricultural & Technical School District	Essex North Shore Agricultural & Technical HS	New	\$125,000,000	\$77,500,000	\$133,770,000	\$77,500,000	The Board was informed at the March 30, 2011 meeting that the Total Project Budget had increased due to additional ineligible scope that would be funded by DCAM.
			\$125,000,000	\$77,500,000	\$134,501,368	\$77,500,000	The District has appropriated additional funds to cover the costs associated with increased construction costs for horse tack barn renovations.
Greater New Bedford	Greater New Bedford Vocational and Technical High School	Add/Reno	\$17,099,808	\$13,543,920	\$16,396,429	\$12,258,642	District submitted final project costs that exceeded the total project budget established at bid. Final Costs did not exceed the original total project budget established at Project Funding Agreement.
Lexington	Joseph Estabrook ES	New	\$40,792,248	\$12,250,739	\$43,392,248	\$12,148,491	The District has executed a GMP that exceeds the Construction Budget of the PFA. The District has appropriated additional funds to cover the costs associated with increased construction costs and additional contingencies.
Newburyport	Nock/Molin MS	Add/Reno	\$26,997,326	\$13,697,934	\$28,170,749	\$12,520,326	The District has received additional funding to cover additional construction change order costs.
North Reading	North Reading MS/HS	Add/Reno	\$107,727,074	\$49,323,123	\$123,227,074	\$49,323,123	This is a CMR project. The estimated, reconciled construction costs tracked over budget at DD (\$9,746,655 over), 60% (\$4,655,965 over), and 90% (\$15,136,846 over). A Town override vote in March 2013 obtained an additional \$15,500,000 in local funding to proceed.
Norfolk County Agricultural	Norfolk County Agricultural HS	Add/Reno	\$28,552,385	\$15,369,712	\$30,589,078	\$13,867,050	The District has executed a Tender Agreement and Completion Agreement Contract, increasing its Total Project Budget, following the termination of its original construction contract.
Northborough	Lincoln Street ES	Add/Reno	\$25,530,553	\$10,407,408	\$25,530,553	\$10,407,408	The MSBA Board Approved Total Project Budget increased by \$60,400 from \$25,470,153 to \$25,530,553 due to the addition of an alternate, for a new ball field added at the District’s request.
Revere	Staff Sergeant James J. Hill ES	New	\$45,402,396	\$29,551,048	45,402,396	\$29,551,048	At Project Scope and Budget, the Total Project Budget was approved at \$44,382,396. The City of Revere has increased the land acquisition budget. Therefore, the projected total project budget at PFA has increased to \$45,402,396. Note that the MSBA grant has not changed since the Project Scope and Budget Agreement.
Salem	Saltonstall ES	Repair	\$15,503,406	\$11,794,492	\$15,752,033	\$10,709,091	The District has executed a GMP that exceeds the Construction Budget of the PFA. The District has appropriated additional funds to cover the costs associated with increased construction costs and additional contingencies.
Somerville	East Somerville Community School	Add/Reno	\$33,185,258	\$15,237,996	\$38,006,621	\$15,237,996	At the March 28, 2012 Board Meeting, the Board approved an amendment to the PFA and a \$6.25M District loan.
Sutton	Sutton MS	Add/Reno	\$59,945,474	\$29,843,511	\$60,130,536	\$27,002,506	The District has executed a Tender Agreement and Completion Agreement Contract, increasing its Total Project Budget, following the termination of its original construction contract.
Uxbridge	Uxbridge HS	New	\$43,000,000	\$22,362,328	\$44,986,479	\$22,362,328	The District has appropriated additional funds to cover the costs associated with the construction of athletic fields originally included in the PFA but which were not included in the bid as the District’s construction contract would have exceeded the budget.
Weston	Field ES	New	\$31,504,146	\$8,310,510	\$32,654,146	\$8,105,549	District-approved Construction Change Orders exceeded available contingency amount.

District	School	Scope	Project Funding Agreement		PFA Bid Amendment/ Final Audit		Reason for Increase to Total Project Budget
			Total Project Budget	Total Maximum Facilities Grant	Total Project Budget	Total Maximum Facilities Grant	
Winchester	Winchester HS	Add/Reno	\$129,923,146	\$44,493,270	\$131,513,741	\$43,100,458	The MSBA Board Approved total Project Budget increased due to a construction change order for additional soil abatements at Skillings Field. Note that the increased Total Project Budget will not increase the Maximum Total Facilities Grant.
Winthrop	Winthrop MS/HS	New	\$81,818,740	\$42,582,841	\$81,432,986	\$41,249,005	The MSBA Board Approved Total Project Budget increased due to revised FEMA flood plain requirements which necessitated the elevation of the new building to be raised. Note that the increased Total Project Budget will not increase the Maximum Total Facilities Grant.
Woburn	Wyman-Hurld ES	New	\$33,705,396	\$14,387,427	\$39,647,723	\$14,387,427	The District had completed a project review with its Conservation Commission and an Order of Conditions was issued on June 12, 2015. A neighborhood group appealed this Order and was reviewed by The DEP. The District experienced delays in completing its City Council vote for its appropriation and incurred additional costs.
Hopkinton	Center ES	New	\$45,629,373	\$14,058,455	\$47,129,373	\$14,058,455	The District has appropriated \$1,500,000 of additional funds to cover the costs associated with the construction of a building addition due to an unanticipated increase in enrollment.

APPENDIX A  
PROJECT STATUS LIST



Date of Report: 10/4/2017

Total Projects: 313

MSBA ID	District	School	Project Phase	Project Type	Project Scope	Procurement Type	OPM	Designer	CMGC	Commissioning Consultant
200800010405	Abington	Frolio Middle School	Building Complete	Core Program	New Construction	DBB	Knight, Bagge & Anderson Inc.	Ai3 Architects LLC	Brait Builders Corp.	Horizon Engineering Associates, LLP
201606000020	Acton-Boxborough	Douglas	Eligibility Period	Core Program			-	-	-	-
201600050303	Agawam	Agawam Middle School	Construction	Accelerated Repair	Boiler		STV   DPM (fka STV Inc.)	Hesnor Engineering Company	-	BVH Integrated Services, P.C.
201500070005	Amesbury	Amesbury Elementary	OPM Selection	Core Program			-	-	-	-
201300080050	Amherst	Wildwood Elementary	Closeout	Core Program	New Construction	CM@R	NV5 (fka Joslin, Lesser + Associates Inc.)	JCJ Architecture, PC	Fontaine Brothers, Inc.	-
200800090003	Andover	Bancroft Elementary School	Closeout	Core Program	New Construction	CM@R	Dore & Whittier Management Partners, Inc.	Symmes Maini & McKee Associates, Inc.	Skanska USA Building, Inc.	Sebesta Blomberg & Associates, Inc.
201500100505	Arlington	Arlington High	Designer Selection	Core Program			Skanska USA Building, Inc	-	-	-
201706150505	Athol-Royalston	Athol High	OPM Selection	Accelerated Repair	Roof, Windows / Doors, Boiler		-	-	-	-
200906150020	Athol-Royalston	Riverbend School	Building Complete	Core Program	New Construction	DBB	Symmes Maini & McKee Associates	Mount Vernon Group Architects, Inc.	Fontaine Brothers, Inc.	Colliers International
201400160505	Attleboro	Attleboro High	Schematic Design	Core Program	New Construction		Skanska USA Building, Inc	Kaestle Boos Associates, Inc.	-	-
200800170305	Auburn	Auburn Middle	Building Complete	Core Program	New Construction	CM@R	Skanska USA Building, Inc	Lamoureux Pagano & Associates, Inc.	Fontaine Brothers, Inc.	WSP USA
201400170305	Auburn	Auburn Middle	Closeout	Accelerated Repair	Roof, Boiler		Skanska USA Building, Inc	Dietz & Company Architects, Inc.	-	Horizon Engineering Associates, LLP   Thompson & Lichtner Co., Inc.
201600170015	Auburn	Pakachoag	Construction	Accelerated Repair	Roof		Hill International Company	CGKV Architects, Inc.	MDM Engineering	Thompson & Lichtner Co., Inc.
200806160505	Ayer-Shirley	Ayer-Shirley Regional Middle/High School	Closeout	Core Program	Addition / Renovation	CM@R	Dore & Whittier Management Partners, Inc.	Symmes Maini & McKee Associates, Inc.	Consigli Construction Company, Inc.	WSP USA
201500260505	Belmont	Belmont High	Feasibility Study	Core Program			Daedalus Projects Inc	Perkins+Will	-	-
200806200505	Berlin-Boylston	Tahanto Regional High School	Closeout	Core Program	New Construction	DBB	PMA Construction Services	HMFH Architects, Inc.	CTA Construction Co., Inc.	Colliers International
201300300305	Beverly	Briscoe Middle	Construction	Core Program	New Construction	CM@R	HEERY	Ai3 Architects LLC	Bacon-Agostini Construction Joint Venture	Bard, Rao + Athanas Consulting Engineers, LLC
201300310505	Billerica	Billerica Memorial High School	Construction	Core Program	New Construction	CM@R	Leftfield, LLC	Perkins+Will	Shawmut Design and Construction	RDK Engineers
201508050605	Blackstone Valley Reg	Blackstone Valley	Closeout	Accelerated Repair	Roof		Watermark Environmental, Inc.	Russo Barr Associates, Inc.	Silktown Roofing	Gale Associates, Inc.
201706220008	Blackstone-Millville	John F Kennedy Elem	OPM Selection	Accelerated Repair	Windows / Doors, Boiler		-	-	-	-
201306220010	Blackstone-Millville	Millville Elem	Closeout	Accelerated Repair	Roof	DBB	Pinck & Co., Inc.	CBI Consulting Inc.	MDM Engineering	Simpson Gumpertz & Heger Inc.
201508060605	Blue Hills Voc	Blue Hills Reg Voc Tech	Approved Project Vote Pending	Core Program	Addition / Renovation		Dore & Whittier Management Partners, Inc.	Drummey Rosane Anderson, Inc.	-	-
201300350546	Boston	Boston Arts Academy	Schematic Design	Core Program	New Construction		PMA Construction Services	Perkins Eastman/DPC	-	-
201600350560	Boston	Boston Latin	Construction	Accelerated Repair	Boiler		NV5 (fka Joslin, Lesser + Associates Inc.)	ICON architecture, inc.	-	Rist-Frost-Shumway Engineering, P.C.
201500350052	Boston	Charles Sumner	Construction	Accelerated Repair	Windows / Doors		P3 Inc.	Dietz & Company Architects, Inc.	Lambrian Construction Corp.	Simpson Gumpertz & Heger Inc.
201700350052	Boston	Charles Sumner	OPM Selection	Accelerated Repair	Boiler		-	-	-	-



201500350020	Boston	Curley K-8 School	Construction	Accelerated Repair	Windows / Doors		P3 Inc.	Dietz & Company Architects, Inc.	GVW, Inc.	Simpson Gumpertz & Heger Inc.
201500350072	Boston	David A Ellis	Construction	Accelerated Repair	Windows / Doors		P3 Inc.	Dietz & Company Architects, Inc.	GVW, Inc.	Simpson Gumpertz & Heger Inc.
201500350080	Boston	Donald Mckay	Construction	Accelerated Repair	Windows / Doors		P3 Inc.	Dietz & Company Architects, Inc.	Paul J. Rogan Co., Inc.	Simpson Gumpertz & Heger Inc.
201500350651	Boston	Dorchester Academy	Construction	Accelerated Repair	Windows / Doors		P3 Inc.	Dietz & Company Architects, Inc.	Lambrian Construction Corp.	Simpson Gumpertz & Heger Inc.
201700350530	Boston	East Boston High	OPM Selection	Accelerated Repair	Boiler		-	-	-	-
201500350415	Boston	Grover Cleveland	Construction	Accelerated Repair	Windows / Doors		P3 Inc.	Dietz & Company Architects, Inc.	Paul J. Rogan Co., Inc.	Simpson Gumpertz & Heger Inc.
201000350074	Boston	Henry Dearborn Middle School	Construction	Core Program	New Construction	CM@R	Daedalus Projects Inc	Jonathan Levi Architects LLC	Gilbane Building Company	Symmes, Maini & McKee Associates
201700350141	Boston	Hugh Roe O'Donnell	OPM Selection	Accelerated Repair	Boiler		-	-	-	-
201600350146	Boston	James Condon Elem	Construction	Accelerated Repair	Boiler		NV5 (fka Joslin, Lesser + Associates Inc.)	ICON architecture, inc.	-	Rist-Frost-Shumway Engineering, P.C.
201700350485	Boston	James P Timilty Middle	OPM Selection	Accelerated Repair	Boiler		-	-	-	-
201700350178	Boston	John Marshall	OPM Selection	Accelerated Repair	Windows / Doors		-	-	-	-
201600350179	Boston	John W McCormack	Construction	Accelerated Repair	Roof		NV5 (fka Joslin, Lesser + Associates Inc.)	ICON architecture, inc.	Gibson Roofs, Inc.	Simpson Gumpertz & Heger Inc.
201700350229	Boston	Maurice J Tobin	OPM Selection	Accelerated Repair	Boiler		-	-	-	-
201600350268	Boston	Paul A Dever	Construction	Accelerated Repair	Roof		NV5 (fka Joslin, Lesser + Associates Inc.)	ICON architecture, inc.	Gibson Roofs, Inc.	Simpson Gumpertz & Heger Inc.
201000350565	Boston	Quincy Upper School	Schematic Design	Core Program			Skanska USA Building, Inc	HMFH Architects, Inc.	-	-
201700350366	Boston	William E Russell	OPM Selection	Accelerated Repair	Roof		-	-	-	-
201600350360	Boston	William Ellery Channing	Construction	Accelerated Repair	Boiler		NV5 (fka Joslin, Lesser + Associates Inc.)	ICON architecture, inc.	-	Rist-Frost-Shumway Engineering, P.C.
201500350380	Boston	Young Achievers	Construction	Accelerated Repair	Windows / Doors		P3 Inc.	Dietz & Company Architects, Inc.	Lockheed Window Corporations	Simpson Gumpertz & Heger Inc.
201400360010	Bourne	James F Peebles Elem	Design Development	Core Program	New Construction	DBB	Symmes Maini & McKee Associates, Inc.	Flansburgh Associates, Inc.	-	BVH Integrated Services, P.C.
201600380013	Boxford	Spofford Pond	Construction	Accelerated Repair	Roof, Windows / Doors		NETCO Construction Project Managers, Inc.	Russo Barr Associates, Inc.	Greenwood Industries, Inc.	CBI Consulting Inc.
201300400305	Braintree	East Middle School	Design Development	Core Program	Addition / Renovation		Hill International Company	Miller Dyer Spears Inc.	-	Fitzemeyer & Tocci Associates, Inc.
201600400310	Braintree	South Middle School	Eligibility Period	Core Program			-	-	-	-
201606250002	Bridgewater-Raynham	Mitchell Elementary School	Eligibility Period	Core Program			-	-	-	-
201409100705	Bristol County Agr	Bristol County Agr High	Feasibility Study	Core Program			Colliers International	HMFH Architects, Inc.	-	-
201400440421	Brockton	Ashfield Middle School	Building Complete	Accelerated Repair	Roof, Boiler		Architectural Consulting Group, LLC	Tighe & Bond, Inc.	-	Rist-Frost-Shumway Engineering, P.C.   Simpson Gumpertz & Heger Inc.
201400440080	Brockton	Barrett Russell School	Closeout	Accelerated Repair	Windows / Doors		Architectural Consulting Group, LLC	Tighe & Bond, Inc.	Reliable Roofing and Sheet Metal, LLC	Simpson Gumpertz & Heger Inc.
201400440010	Brockton	Brookfield	Building Complete	Accelerated Repair	Roof		Architectural Consulting Group, LLC	Tighe & Bond, Inc.	-	Simpson Gumpertz & Heger Inc.
201400440035	Brockton	Gilmore	Building Complete	Accelerated Repair	Roof, Boiler		Architectural Consulting Group, LLC	Tighe & Bond, Inc.	-	Rist-Frost-Shumway Engineering, P.C.   Simpson Gumpertz & Heger Inc.
201100460015	Brookline	Edward Devotion	Construction	Core Program	Addition / Renovation	CM@R	Town employee	HMFH Architects, Inc.	Shawmut Design and Construction	Consulting Engineering Services, LLC
201500490090	Cambridge	Fletcher/Maynard Academy	Closeout	Accelerated Repair	Boiler		Skanska USA Building, Inc	TSKP Studio, LLC	CAM HVAC & Construction, Inc.	Fitzemeyer & Tocci Associates, Inc.
201600490090	Cambridge	Fletcher/Maynard Academy	Construction	Accelerated Repair	Roof		Arcadis U.S., Inc.	HAKS Engineers, P.C.	John F. Shea Company, Inc.	Gale Associates, Inc.





201500490040	Cambridge	Kennedy-Longfellow	Closeout	Accelerated Repair	Roof		Skanska USA Building, Inc	TSKP Studio, LLC	Greenwood Industries, Inc.	Thompson & Lichtner Co., Inc.
201600500012	Canton	Lt Peter M Hansen	Building Complete	Accelerated Repair	Roof		Watermark Environmental, Inc.	Kaestle Boos Associates, Inc.	-	Simpson Gumpertz & Heger Inc.
201408150605	Cape Cod Region Voc Tech	Cape Cod Region Voc Tech	Approved Project Vote Pending	Core Program	New Construction	DBB	Colliers International	Drumme Rosane Anderson, Inc.	-	-
201300520015	Carver	Carver Elementary School	Construction	Core Program	New Construction		PMA Construction Services	HMFH Architects, Inc.	CTA Construction Co., Inc.	Symmes, Maini & McKee Associates
201600520405	Carver	Carver Middle/High School	Construction	Accelerated Repair	Roof, Windows / Doors, Boiler		Leftfield, LLC	Johnson Roberts Associates, Inc.	J.J. Cardosi, Inc.	Symmes, Maini & McKee Associates
201506350505	Central Berkshire	Wahconah Regional High	Designer Selection	Core Program			Skanska USA Building, Inc	-	-	-
200800570050	Chelsea	Clark Avenue School	Construction	Core Program	New Construction	CM@R	Pinck & Co., Inc.	HMFH Architects, Inc.	W. T. Rich Company Inc.	Cannon Design
201500610010	Chicopee	Belcher	Building Complete	Accelerated Repair	Roof		NV5 (fka Joslin, Lesser + Associates Inc.)	Kaestle Boos Associates, Inc.	J.D. Rivet & Co., Inc.	Building Enclosure Associates, LLC
201600610015	Chicopee	Bowe	Design Development	Accelerated Repair	Windows / Doors		Compass Project Management, Inc.	Turowski2 Architecture, Inc.	-	Thompson & Lichtner Co., Inc.
200900610021	Chicopee	Chicopee Academy	Closeout	Core Program	Renovation	DBB	Arcadis U.S., Inc.	Caolo & Bieniek Associates, Inc.	Fontaine Brothers, Inc.	Symmes, Maini & McKee Associates
201500610310	Chicopee	Fairview Middle	Building Complete	Accelerated Repair	Roof		NV5 (fka Joslin, Lesser + Associates Inc.)	Kaestle Boos Associates, Inc.	J.D. Rivet & Co., Inc.	Building Enclosure Associates, LLC
201600610050	Chicopee	Selser	Design Development	Accelerated Repair	Roof		Compass Project Management, Inc.	Turowski2 Architecture, Inc.	-	Thompson & Lichtner Co., Inc.
201400630010	Clarksburg	Clarksburg Elementary	Approved Project Vote Pending	Core Program	Addition / Renovation	DBB	PCA 360	Jones Whitsett Architects, Inc.	-	-
201500710032	Danvers	Ivan G Smith	Designer Selection	Core Program			PMA Construction Services	-	-	-
201600720050	Dartmouth	Dartmouth Middle	Design Development	Accelerated Repair	Roof		Atlantic Construction and Management, Inc.	CSS Architects Incorporated	-	CBI Consulting Inc.
201200730005	Dedham	Early Childhood Center	Construction	Core Program	New Construction	DBB	Construction Monitoring Services, Inc.	Knight, Bagge & Anderson, Inc.	C.J. Marbardy, Inc.	Symmes, Maini & McKee Associates
201500740015	Deerfield	Deerfield Elem	Closeout	Accelerated Repair	Roof		Pinck & Co., Inc.	Raymond Design Associates, Inc.	MDM Engineering	Russo Barr Associates, Inc.
201506450305	Dennis-Yarmouth	Mattacheese Middle Sch	Feasibility Study	Core Program			PMA Construction Services	Perkins Eastman/DPC	-	-
200800790505	Dracut	Dracut Senior High School	Closeout	Core Program	Addition / Renovation	DBB	Hill International Company	Mount Vernon Group Architects, Inc.	CTA Construction Co., Inc.	RDK Engineers
201700830005	East Bridgewater	Central	OPM Selection	Accelerated Repair	Boiler		-	-	-	-
201700870013	East Longmeadow	Meadow Brook	Schematic Design	Accelerated Repair	Windows / Doors		-	-	-	-
201400860010	Easthampton	Maple	Feasibility Study	Core Program			Colliers International	Caolo & Bieniek Associates, Inc.	-	-
201600880003	Easton	Center School	Eligibility Period	Core Program			-	-	-	-
201400930028	Everett	George Keverian School	Feasibility Study	Core Program			Symmes Maini & McKee Associates, Inc.	Mount Vernon Group Architects, Inc.	-	-
201500940305	Fairhaven	Hastings Middle	Final Audit Approved	Accelerated Repair	Roof		PCA 360	CGKV Architects, Inc.	Capeway Roofing Systems, Inc.	Gale Associates, Inc.
201400950505	Fall River	B M C Durfee High	Schematic Design	Core Program			Leftfield, LLC	Ai3 Architects LLC	-	-
201700950140	Fall River	James Tansey	OPM Selection	Accelerated Repair	Windows / Doors, Boiler		-	-	-	-
201700950145	Fall River	Samuel Watson	OPM Selection	Accelerated Repair	Roof, Windows / Doors, Boiler		-	-	-	-
201400960405	Falmouth	Lawrence	Closeout	Accelerated Repair	Windows / Doors		PMA Construction Services	CIVITECTS PC	GVW, Inc.	Gale Associates, Inc.
201600970016	Fitchburg	Crocker Elementary	Eligibility Period	Core Program			-	-	-	-
201500990015	Foxborough	Mabelle M Burrell	Feasibility Study	Core Program			Colliers International	Kaestle Boos Associates, Inc.	-	-
201501000305	Framingham	Fuller Middle	Feasibility Study	Core Program			Symmes Maini & McKee Associates, Inc.	-	-	-
200901010505	Franklin	Franklin High School	Closeout	Core Program	New Construction - Model School	DBB	Daedalus Projects Inc	Ai3 Architects LLC	Bacon-Agostini Construction Joint Venture	Consulting Engineering Services, LLC



201408180605	Franklin County	Franklin County Tech	Closeout	Accelerated Repair	Windows / Doors		Colliers International	Habeeb & Associates Architects, Inc.	Gardner Construction & Industrial Services	CBI Consulting Inc.
201401030001	Gardner	Elm Street School	Closeout	Accelerated Repair	Windows / Doors, Boiler		Hill International Company	ICON architecture, inc.	Lockheed Window Corporations	Fitzemeyer & Tocci Associates, Inc.   Thompson & Lichtner Co., Inc.
201601030020	Gardner	Waterford Street	Eligibility Period	Core Program			-	-	-	-
200901050010	Georgetown	Penn Brook Elementary School	Building Complete	Core Program	New Construction	DBB	Municipal Building Consultants, Inc.	Drumney Rosane Anderson, Inc.	Brait Builders Corp.	Rist-Frost-Shumway Engineering, P.C.
201406740050	Gill-Montague	Sheffield Elementary	Final Audit Approved	Accelerated Repair	Windows / Doors, Boiler		NETCO Construction Project Managers, Inc.	The S/L/A/M Collaborative	Gardner Construction & Industrial Services	CBI Consulting Inc.
201601070020	Gloucester	East Gloucester Elem	Eligibility Period	Core Program			-	-	-	-
201601070505	Gloucester	Gloucester High	Construction	Accelerated Repair	Roof		P3 Inc.	Baker/Wohl Architects, Inc.	-	CBI Consulting Inc.
200901070050	Gloucester	West Parish Elementary School	Closeout	Core Program	New Construction	CM@R	Knight, Bagge & Anderson Inc.	Dore & Whittier Architects, Inc.	W. T. Rich Company Inc.	Fitzemeyer & Tocci Associates, Inc.
201701100030	Grafton	North St Elementary School	OPM Selection	Accelerated Repair	Windows / Doors		-	-	-	-
201201110010	Granby	West St	Construction	Core Program	Addition / Renovation		Colliers International	Jones Whitsett Architects, Inc.	Fontaine Brothers, Inc.	Rist-Frost-Shumway Engineering, P.C.
200908280605	Greater Lowell Voc Tec	Greater Lowell Regional Technical High School	Closeout	Core Program	Addition / Renovation	CM@R	NV5 (fka Joslin, Lesser + Associates Inc.)	Knight, Bagge & Anderson, Inc.	Consigli Construction Company, Inc.	Horizon Engineering Associates, LLP
201501140010	Greenfield	Federal	Construction	Accelerated Repair	Roof, Windows / Doors, Boiler		exPERTcon, Inc.	Tighe & Bond, Inc.	Kurtz, Inc.	Colliers International
201401140030	Greenfield	Green River	Closeout	Accelerated Repair	Roof, Windows / Doors, Boiler		Arcadis U.S., Inc.	Baker/Wohl Architects, Inc.	RAC Builders, Inc.	CBI Consulting Inc.
200901140505	Greenfield	Greenfield High School	Closeout	Core Program	New Construction	CM@R	Construction Monitoring Services, Inc.	Dore & Whittier Architects, Inc.	Shawmut Design and Construction	BVH Integrated Services, P.C.
201601180005	Halifax	Halifax Elementary	Construction	Accelerated Repair	Roof, Windows / Doors		Vertex Construction Services	Habeeb & Associates Architects, Inc.	Capeway Roofing Systems, Inc.	Russo Barr Associates, Inc.
201301220015	Hanover	Sylvester	Construction	Core Program	Addition / Renovation		P3 Inc.	Mount Vernon Group Architects, Inc.	-	Horizon Engineering Associates, LLP
201501250005	Harvard	Harvard Elementary	Schematic Design	Core Program	New Construction		NV5 (fka Joslin, Lesser + Associates Inc.)	Arrowstreet Inc.	-	-
201201280035	Haverhill	Caleb Dustin Hunking	Building Complete	Core Program	New Construction	CM@R	NV5 (fka Joslin, Lesser + Associates Inc.)	JCJ Architecture, PC	Shawmut Design and Construction	Colliers International
201101280100G	Haverhill	Consentino	Closeout	Green Repair	Windows / Doors	DBB	Vertex Construction Services	CSS Architects Incorporated	New England Builders & Contractors, Inc.	RDK Engineers   Russo Barr Associates, Inc.
201101280085G	Haverhill	John G Whittier	Closeout	Green Repair	Windows / Doors	DBB	Vertex Construction Services	CSS Architects Incorporated	New England Builders & Contractors, Inc.	Russo Barr Associates, Inc.
201101280075G	Haverhill	Tilton	Closeout	Green Repair	Roof	DBB	Vertex Construction Services	CSS Architects Incorporated	Titan Roofing, Inc.	Russo Barr Associates, Inc.
201101280080G	Haverhill	Walnut Square	Closeout	Green Repair	Roof, Windows / Doors	DBB	Vertex Construction Services	CSS Architects Incorporated	Titan Roofing, Inc.	RDK Engineers   Russo Barr Associates, Inc.
201001310410	Hingham	Hingham Middle School	Final Audit Approved	Core Program	New Construction - Model School	DBB	Knight, Bagge & Anderson Inc.	Ai3 Architects LLC	Brait Builders Corp.	Foreman Building Commissioning, LP
200801330505	Holbrook	Holbrook Junior-Senior High School	Building Complete	Core Program	New Construction	CM@R	Symmes Maini & McKee Associates, Inc.	Flansburgh Associates, Inc.	Consigli Construction Company, Inc.	Consulting Engineering Services, LLC
201401370045	Holyoke	E N White Elem	Closeout	Accelerated Repair	Boiler		STV   DPM (fka STV Inc.)	Richard D. Kimball Company, Inc.	Adams Plumbing and Heating, Inc.	BVH Integrated Services, P.C.
201701370040	Holyoke	Kelly Elem	OPM Selection	Accelerated Repair			-	-	-	-
201701370010	Holyoke	Lawrence Elem	Designer Selection	Core Program			-	-	-	-
201701370055	Holyoke	Lt Clayre Sullivan Elem	OPM Selection	Accelerated Repair	Windows / Doors		-	-	-	-
201401370025	Holyoke	Morgan Elem	Closeout	Accelerated Repair	Boiler		STV   DPM (fka STV Inc.)	Richard D. Kimball Company, Inc.	Adams Plumbing and Heating, Inc.	BVH Integrated Services, P.C.
201701370025	Holyoke	Morgan Elem	OPM Selection	Accelerated Repair	Windows / Doors		-	-	-	-
201201370605	Holyoke	Wm J Dean Voc Tech High	Closeout	Science Lab Initiative	Addition / Renovation	DBB	Skanska USA Building, Inc	Kaestle Boos Associates, Inc.	RAC Builders, Inc.	BVH Integrated Services, P.C.



201301390005	Hopkinton	Center	Construction	Core Program	New Construction	CM@R	Compass Project Management, Inc.	Drummeys Rosane Anderson, Inc.	Colantonio, Inc.	RDK Engineers
200801410410	Hudson	John F. Kennedy Middle School	Final Audit Approved	Core Program	New Construction	DBB	PMA Construction Services	OMR Architects, Inc.	Bacon-Agostini Construction Joint Venture	WSP USA
201401410007	Hudson	Mulready Elementary	Final Audit Approved	Accelerated Repair	Roof		Atlantic Construction and Management, Inc.	Raymond Design Associates, Inc.	Capeway Roofing Systems, Inc.	CBI Consulting Inc.
201401440015	Ipswich	Winthrop	Feasibility Study	Core Program	New Construction		PMA Construction Services	Perkins Eastman/DPC	-	-
201701490008	Lawrence	Arlington Elementary School	OPM Selection	Accelerated Repair	Roof, Boiler		-	-	-	-
201601490050	Lawrence	Henry K Oliver	Eligibility Period	Core Program			-	-	-	-
201601490536	Lawrence	High School Learning Center School for Exceptional Studies	Building Complete	Accelerated Repair	Boiler		Pinck & Co., Inc.	Shekar & Associates, Inc.	CAM HVAC & Construction, Inc.	Fitzemeyer & Tocci Associates, Inc.
201701490537	Lawrence		OPM Selection	Accelerated Repair	Roof		-	-	-	-
201501510505	Leicester	Leicester High	Building Complete	Accelerated Repair	Roof		Hill International Company	Gale Associates, Inc.	Greenwood Industries, Inc.	Russo Barr Associates, Inc.
201601510015	Leicester	Leicester Middle	Eligibility Period	Core Program			-	-	-	-
201501530025	Leominster	Johnny Appleseed	Construction	Accelerated Repair	Roof, Windows / Doors		NETCO Construction Project Managers, Inc.	Habeeb & Associates Architects, Inc.	GVW, Inc.	Russo Barr Associates, Inc.
201501550035	Lexington	Maria Hastings	Approved Project Vote Pending	Core Program	New Construction		Dore & Whittier Management Partners, Inc.	DiNisco Design, Inc.	-	-
201401600505	Lowell	Lowell High	Feasibility Study	Core Program			Skanska USA Building, Inc	Perkins Eastman/DPC	-	-
201501610020	Ludlow	Chapin Street Elementary School	Feasibility Study	Core Program			STV   DPM (fka STV Inc.)	Mount Vernon Group Architects, Inc.	-	-
201501610010	Ludlow	East Street Elementary School	Closeout	Accelerated Repair	Roof, Boiler		STV   DPM (fka STV Inc.)	Johnson Roberts Associates, Inc.	Westfield Construction Co., Inc.	Colliers International
201001620505	Lunenburg	Lunenburg High School	Building Complete	Core Program	New Construction	CM@R	NV5 (fka Joslin, Lesser + Associates Inc.)	Tappe Associates, Inc.	Shawmut Design and Construction	Cannon Design
201401630045	Lynn	E J Harrington	Closeout	Accelerated Repair	Roof		NETCO Construction Project Managers, Inc.	Habeeb & Associates Architects, Inc.	Capeway Roofing Systems, Inc.	CBI Consulting Inc.
201701630055	Lynn	Hood	OPM Selection	Accelerated Repair	Roof, Windows / Doors		-	-	-	-
201401630420	Lynn	Pickering Middle	Closeout	Core Program			Leftfield, LLC	Raymond Design Associates, Inc.	-	-
200901630305	Lynn	Thurgood Marshall Middle School	Closeout	Core Program	New Construction	CM@R	NV5 (fka Joslin, Lesser + Associates Inc.)	Raymond Design Associates, Inc.	Walsh Brothers, Inc.	Rist-Frost-Shumway Engineering, P.C.
201506980010	Manchester Essex Regional	Manchester Memorial Elementary	Feasibility Study	Core Program			Dore & Whittier Management Partners, Inc.	JCJ Architecture, PC	-	-
201701670505	Mansfield	Mansfield High	OPM Selection	Accelerated Repair	Windows / Doors		-	-	-	-
201501680015	Marblehead	Elbridge Gerry	Feasibility Study	Core Program			Leftfield, LLC	Raymond Design Associates, Inc.	-	-
201501700025	Marlborough	Richer	Feasibility Study	Core Program			Daedalus Projects Inc	Lamoureux Pagano & Associates, Inc.	-	-
201601710310	Marshfield	Furnace Brook Middle	Design Development	Accelerated Repair	Roof		PCA 360	CIVITECTS PC	-	Russo Barr Associates, Inc.
201101710505	Marshfield	Marshfield High	Final Audit Approved	Core Program	New Construction - Model School	DBB	Compass Project Management, Inc.	Ai3 Architects LLC	Brait Builders Ventures	Sebesta Blomberg & Associates, Inc.
201601720035	Mashpee	Quashnet School	Design Development	Accelerated Repair	Windows / Doors		expERTcon, Inc.	Raymond Design Associates, Inc.	-	CBI Consulting Inc.
201401750007	Medfield	Ralph Wheelock School	Building Complete	Accelerated Repair	Boiler		Skanska USA Building, Inc	Hesnor Engineering Company	Performance Plumbing and Heating	RDK Engineers
201301760505	Medford	Medford High	Final Audit Approved	Accelerated Repair	Boiler	DBB	Architectural Consulting Group, LLC	Dietz & Company Architects, Inc.	NB Kenney Company, Inc	Symmes, Maini & McKee Associates
201401780017	Melrose	Herbert Clark Hoover	Closeout	Accelerated Repair	Windows / Doors		Colliers International	ICON architecture, inc.	GVW, Inc.	Simpson Gumpertz & Heger Inc.



201501820011	Middleborough	Memorial Early Childhood Center	Closeout	Accelerated Repair	Roof		Architectural Consulting Group, LLC	Knight, Bagge & Anderson, Inc.	MDM Engineering	Russo Barr Associates, Inc.
201401820505	Middleborough	Middleborough High	Schematic Design	Core Program			Compass Project Management, Inc.	Drummeys Rosane Anderson, Inc.	-	-
201101850090	Milford	Woodland	Building Complete	Core Program	New Construction	CM@R	NV5 (fka Joslin, Lesser + Associates Inc.)	HMFH Architects, Inc.	Shawmut Design and Construction	Consulting Engineering Services, LLC
201601860025	Millbury	Raymond E. Shaw Elementary	Eligibility Period	Core Program			-	-	-	-
201401870005	Millis	Clyde F Brown	Approved Project Vote Pending	Core Program	New Construction		Compass Project Management, Inc.	Tappe Associates, Inc.	-	Colliers International
200908300605	Minuteman Voc Tech	Minuteman Regional High School	Construction	Core Program	New Construction	CM@R	Skanska USA Building, Inc	Kaestle Boos Associates, Inc.	Gilbane Building Company	Bard, Rao + Athanas Consulting Engineers, LLC
201107129999	Monomoy	Monomoy Regional High School	Closeout	Core Program	New Construction - Model School	DBB	Skanska USA Building, Inc	Mount Vernon Group Architects, Inc.	Fontaine Brothers, Inc.	Sebesta Blomberg & Associates, Inc.
201307150505	Mount Greylock	Mt Greylock Reg High	Construction	Core Program	Addition / Renovation	CM@R	Dore & Whittier Management Partners, Inc.	Perkins Eastman/DPC	Turner Construction Company	BVH Integrated Services, P.C.
200807200020	Narragansett	Templeton Center School	Design Development	Core Program	New Construction		Colliers International	Symmes Maini & McKee Associates, Inc.	-	Fitzmeyer & Tocci Associates, Inc.
201501980305	Natick	J F Kennedy Middle Sch	Feasibility Study	Core Program			Compass Project Management, Inc.	Ai3 Architects LLC	-	-
201606600505	Nauset	Nauset Regional High	Eligibility Period	Core Program			-	-	-	-
201301990035	Needham	Hillside Elementary	Design Development	Core Program	New Construction	DBB	Town employee	Dore & Whittier Architects, Inc.	-	Rist-Frost-Shumway Engineering, P.C.
201502010063	New Bedford	Alfred J Gomes	Building Complete	Accelerated Repair	Windows / Doors		Vertex Construction Services	-	-	CBI Consulting Inc.
201502010123	New Bedford	Casmir Pulaski	Building Complete	Accelerated Repair	Windows / Doors, Boiler		Vertex Construction Services	-	-	CBI Consulting Inc.   WSP USA
201702010015	New Bedford	Elizabeth Carter Brooks	OPM Selection	Accelerated Repair	Windows / Doors, Boiler		-	-	-	-
201502010078	New Bedford	Hayden/McFadden	Building Complete	Accelerated Repair	Windows / Doors, Boiler		Vertex Construction Services	-	-	CBI Consulting Inc.   WSP USA
201502010115	New Bedford	John Avery Parker	Closeout	Accelerated Repair	Windows / Doors, Boiler		Vertex Construction Services	-	-	-
201602010115	New Bedford	John Avery Parker	Design Development	Accelerated Repair	Windows / Doors		Architectural Consulting Group, LLC	CBI Consulting Inc.	-	WSP USA
200902010070	New Bedford	John Hannigan	Construction	Core Program	New Construction	DBB	Daedalus Projects Inc	Turowski2 Architecture, Inc.	H.V. Collins Co., Inc.	WSP USA
201502010045	New Bedford	Sgt Wm H Carney Acad	Building Complete	Accelerated Repair	Windows / Doors		Vertex Construction Services	-	-	CBI Consulting Inc.   WSP USA
W201002019999P2	New Bedford	Taylor School at the Sea Lab Marine Science Education Center	Building Complete	Waitlist	Addition / Renovation	DBB	Architectural Consulting Group, LLC	Mount Vernon Group Architects, Inc.	M. O'Connor Contracting, Inc.	WSP USA
201102070005	Newton	A E Angier	Closeout	Core Program	New Construction	CM@R	NV5 (fka Joslin, Lesser + Associates Inc.)	DiNisco Design, Inc.	W. T. Rich Company Inc.	Fitzmeyer & Tocci Associates, Inc.
201302070025	Newton	Cabot	Construction	Core Program	Addition / Renovation	CM@R	NV5 (fka Joslin, Lesser + Associates Inc.)	DiNisco Design, Inc.	W. T. Rich Company Inc.	Colliers International
200802080005	Norfolk	Freeman-Kennedy Elementary School	Closeout	Core Program	New Construction	DBB	NV5 (fka Joslin, Lesser + Associates Inc.)	Flansburgh Associates, Inc.	Fontaine Brothers, Inc.	WSP USA
201602150015	North Brookfield	North Brookfield Elem	Design Development	Accelerated Repair	Roof		Skanska USA Building, Inc	Dietz & Company Architects, Inc.	-	Simpson Gumpertz & Heger Inc.
201607350030	North Middlesex	Hawthorne Brook	Design Development	Accelerated Repair			Atlantic Construction and Management, Inc.	Habeeb & Associates Architects, Inc.	-	Gale Associates, Inc.
201107350505	North Middlesex	North Middlesex Reg	Building Complete	Core Program	New Construction	DBB	HEERY	Symmes Maini & McKee Associates, Inc.	CTA Construction Co., Inc.	Horizon Engineering Associates, LLP
201607350020	North Middlesex	Squannacook	Design Development	Accelerated Repair			Atlantic Construction and Management, Inc.	Habeeb & Associates Architects, Inc.	-	Gale Associates, Inc.
201607350035	North Middlesex	Varnum Brook	Design Development	Accelerated Repair			Atlantic Construction and Management, Inc.	Habeeb & Associates Architects, Inc.	-	Gale Associates, Inc.



201502170003	North Reading	E Ethel Little School	Closeout	Accelerated Repair	Roof		Compass Project Management, Inc.	HAKS Engineers, P.C.	Stanley Roofing Company, Inc.	Thompson & Lichtner Co., Inc.
201002170505	North Reading	North Reading High School	Building Complete	Core Program	Addition / Renovation	CM@R	PMA Construction Services	Dore & Whittier Architects, Inc.	Gilbane Building Company	Cannon Design
201602100005	Northampton	Bridge Street	Construction	Accelerated Repair	Roof		Colliers International	The S/L/A/M Collaborative	D.A. Sullivan & Sons, Inc.	CBI Consulting Inc.
201602100025	Northampton	Leeds	Construction	Accelerated Repair	Roof		Colliers International	The S/L/A/M Collaborative	D.A. Sullivan & Sons, Inc.	CBI Consulting Inc.
201102130003	Northborough	Lincoln Street	Closeout	Core Program	Addition / Renovation	DBB	Colliers International	Lamoureux Pagano & Associates, Inc.	Brait Builders Corp.	Fitzmeyer & Tocci Associates, Inc.
201502140001	Northbridge	W Edward Balmer	Feasibility Study	Core Program			Symmes Maini & McKee Associates, Inc.	Dore & Whittier Architects, Inc.	-	-
201702180060	Norton	Henri A. Yelle	OPM Selection	Accelerated Repair	Windows / Doors		-	-	-	-
201702180015	Norton	J C Solmonese	OPM Selection	Accelerated Repair	Windows / Doors		-	-	-	-
201702180010	Norton	L G Nourse Elementary	OPM Selection	Accelerated Repair	Windows / Doors		-	-	-	-
201602230010	Orange	Dexter Park	Eligibility Period	Core Program			-	-	-	-
201402240005	Orleans	Orleans Elementary	Closeout	Accelerated Repair	Windows / Doors		Architectural Consulting Group, LLC	Tighe & Bond, Inc.	RAC Builders, Inc.	Gale Associates, Inc.
200802260405	Oxford	Oxford Middle School	Closeout	Core Program	Repair	DBB	Diversified Project Management	CGKV Architects, Inc.	J.J. Cardosi, Inc.	Cannon Design
200802290305	Peabody	Higgins Middle School	Building Complete	Core Program	New Construction	DBB	Daedalus Projects Inc	DiNisco Design, Inc.	Bacon-Agostini Construction Joint Venture	BVH Integrated Services, P.C.
201402290016	Peabody	John E. McCarthy	Closeout	Accelerated Repair	Roof, Windows / Doors		Hill International Company	CIVITECTS PC	-	Thompson & Lichtner Co., Inc.
201502290510	Peabody	Peabody Veterans Memorial High	Construction	Accelerated Repair	Roof		Municipal Building Consultants, Inc.	CIVITECTS PC	Greenwood Industries, Inc.	Thompson & Lichtner Co., Inc.
201302310010	Pembroke	Hobomock Elementary	Closeout	Accelerated Repair	Roof	DBB	Pinck & Co., Inc.	The S/L/A/M Collaborative	Greenwood Industries, Inc.	CBI Consulting Inc.
201302310015	Pembroke	North Pembroke Elem	Closeout	Accelerated Repair	Roof	DBB	Pinck & Co., Inc.	The S/L/A/M Collaborative	Paul J. Rogan Co., Inc.	CBI Consulting Inc.
201302310305	Pembroke	Pembroke Community Middle School	Closeout	Accelerated Repair	Roof	DBB	Pinck & Co., Inc.	The S/L/A/M Collaborative	Paul J. Rogan Co., Inc.	CBI Consulting Inc.
201302310505	Pembroke	Pembroke High School	Closeout	Accelerated Repair	Roof	DBB	Pinck & Co., Inc.	The S/L/A/M Collaborative	Greenwood Industries, Inc.	CBI Consulting Inc.
201507450505	Pentucket	Pentucket Reg Sr High	Feasibility Study	Core Program			Vertex Construction Services	Dore & Whittier Architects, Inc.	-	-
201002360510	Pittsfield	Taconic High School	Construction	Core Program	New Construction	CM@R	Skanska USA Building, Inc	Drumrey Rosane Anderson, Inc.	Gilbane Building Company	Colliers International
201202390515	Plymouth	Plymouth South High	Building Complete	Core Program	New Construction	DBB	Ted Gentry Associates, Inc	Ai3 Architects LLC	Bacon-Agostini Construction Joint Venture	Rist-Frost-Shumway Engineering, P.C.
201302420505	Provincetown	Provincetown High	Building Complete	Core Program	Repair	DBB	Atlantic Construction and Management, Inc.	Raymond Design Associates, Inc.	E. Amanti & Sons, Inc.	BVH Integrated Services, P.C.
201607780005	Quabog Regional	Warren Elementary	Design Development	Accelerated Repair	Windows / Doors		NETCO Construction Project Managers, Inc.	TSKP Studio, LLC	-	Colliers International
201602430040	Quincy	Atherton Hough	Building Complete	Accelerated Repair	Boiler		Hill International Company	Architectural Engineers, Inc.	E. Amanti & Sons, Inc.	Consulting Engineering Services, LLC
201502430020	Quincy	Beechwood Knoll Elem	Construction	Accelerated Repair	Roof, Windows / Doors		Atlantic Construction and Management, Inc.	Baker/Wohl Architects, Inc.	Alpha Contracting Associates, Inc.	CBI Consulting Inc.
201602430020	Quincy	Beechwood Knoll Elem	Building Complete	Accelerated Repair	Boiler		Hill International Company	Architectural Engineers, Inc.	E. Amanti & Sons, Inc.	Consulting Engineering Services, LLC
201502430060	Quincy	Merrymount	Building Complete	Accelerated Repair	Roof		Atlantic Construction and Management, Inc.	Baker/Wohl Architects, Inc.	Gibson Roofs, Inc.	CBI Consulting Inc.
201602430060	Quincy	Merrymount	Building Complete	Accelerated Repair	Boiler		Hill International Company	Architectural Engineers, Inc.	E. Amanti & Sons, Inc.	Consulting Engineering Services, LLC
201702430510	Quincy	North Quincy High	Schematic Design	Accelerated Repair	Roof		-	-	-	-



201302430320	Quincy	Reay E Sterling Middle	Construction	Core Program	New Construction		PCA 360	Ai3 Architects LLC	-	Symmes, Maini & McKee Associates
201602430110	Quincy	Wollaston School	Building Complete	Accelerated Repair	Boiler		Hill International Company	Architectural Engineers, Inc.	E. Amanti & Sons, Inc.	Consulting Engineering Services, LLC
201402440018	Randolph	J F Kennedy Elem	Closeout	Accelerated Repair	Windows / Doors		STV   DPM (fka STV Inc.)	Taylor & Burns, Inc.	Modern Glass & Aluminum, Inc.	Gale Associates, Inc.
201702440015	Randolph	Margaret L Donovan	Schematic Design	Accelerated Repair	Boiler		-	-	-	-
201702440040	Randolph	Martin E Young Elem	Schematic Design	Accelerated Repair	Windows / Doors		-	-	-	-
201402440505	Randolph	Randolph High	Closeout	Accelerated Repair	Windows / Doors		STV   DPM (fka STV Inc.)	Taylor & Burns, Inc.	A&A Window Products, Inc.	Gale Associates, Inc.
201502480056	Revere	Garfield Elementary School	Construction	Accelerated Repair	Roof		Leftfield, LLC	Turowski2 Architecture, Inc.	Greenwood Industries, Inc.	Thompson & Lichtner Co., Inc.
201602480057	Revere	Garfield Middle School	Design Development	Accelerated Repair	Boiler		NV5 (fka Joslin, Lesser + Associates Inc.)	BLW Engineers, Inc.	-	Fitzemeyer & Tocci Associates, Inc.
201002480035	Revere	Staff Sergeant James J. Hill School	Building Complete	Core Program	New Construction	DBB	Hill International Company	Drumrey Rosane Anderson, Inc.	CTA Construction Co., Inc.	Rist-Frost-Shurway Engineering, P.C.
201602510060	Rockland	Jefferson Elementary School	Eligibility Period	Core Program			-	-	-	-
201402620505	Saugus	Saugus High	Design Development	Core Program	New Construction	CM@R	PMA Construction Services	HMFH Architects, Inc.	-	Consulting Engineering Services, LLC
201202640305	Scituate	Gates Intermediate School	Building Complete	Core Program	New Construction	DBB	Daedalus Projects Inc	Dore & Whittier Architects, Inc.	Bacon-Agostini Construction Joint Venture	WSP USA
201702650015	Seekonk	Mildred Aitken School	OPM Selection	Accelerated Repair	Windows / Doors		-	-	-	-
201602660015	Sharon	Heights Elementary	Building Complete	Accelerated Repair	Roof		PCA 360	Knight, Bagge & Anderson, Inc.	Greenwood Industries, Inc.	Simpson Gumpertz & Heger Inc.
201602660505	Sharon	Sharon High	Eligibility Period	Core Program			-	-	-	-
201502710005	Shrewsbury	Beal School	Feasibility Study	Core Program			PMA Construction Services	Lamoureux Pagano & Associates, Inc.	-	-
200811119999	Somerset-Berkley	Somerset-Berkley High	Closeout	Core Program	New Construction - Model School	DBB	Skanska USA Building, Inc	Ai3 Architects LLC	Bacon-Agostini Construction Joint Venture	Horizon Engineering Associates, LLP
200902740111E	Somerville	East Somerville Community School at Cummings	Closeout	Core Program	Renovation	CM@R	PMA Construction Services	Maguire Group Inc.	Gilbane Building Company	Foreman Building Commissioning, LP
201302740505	Somerville	Somerville High	Design Development	Core Program	Addition / Renovation		PMA Construction Services	Symmes Maini & McKee Associates, Inc.	Suffolk Construction Company	WSP USA
201602740120	Somerville	Winter Hill Community	Design Development	Accelerated Repair	Roof, Windows / Doors		Municipal Building Consultants, Inc.	TSKP Studio, LLC	-	Thompson & Lichtner Co., Inc.
200902780015	South Hadley	Plains School	Closeout	Core Program	New Construction	DBB	Arcadis U.S., Inc.	Jones Whitsett Architects, Inc.	Fontaine Brothers, Inc.	Colliers International
201407650505	Southern Berkshire	Mt Everett Regional	Final Audit Approved	Accelerated Repair	Roof, Boiler		NETCO Construction Project Managers, Inc.	Dietz & Company Architects, Inc.	Titan Roofing, Inc.	Colliers International
200908760605	Southern Worcester Cty VT	Bay Path Regional Vocational Technical High School	Closeout	Core Program	Addition / Renovation	CM@R	HEERY	Kaestle Boos Associates, Inc.	Consigli Construction Company, Inc.	RDK Engineers
201107660305	Southwick-Tolland	Powder Mill	Closeout	Core Program	Repair	DBB	Colliers International	JCJ Architecture, PC	PDS Engineering and Construction, Inc.	BVH Integrated Services, P.C.
201107660505	Southwick-Tolland	Southwick-Tolland Regional High	Closeout	Core Program	Addition / Renovation	DBB	Colliers International	JCJ Architecture, PC	Fontaine Brothers, Inc.	BVH Integrated Services, P.C.
200807660010	Southwick-Tolland	Woodland Elementary School	Closeout	Core Program	Addition / Renovation	DBB	Colliers International	JCJ Architecture, PC	PDS Engineering and Construction, Inc.	BVH Integrated Services, P.C.
201602810095	Springfield	Alfred G Zanetti	Design Development	Accelerated Repair	Windows / Doors		Leftfield, LLC	Gale Associates, Inc.	-	Building Enclosure Associates, LLC
201602810015	Springfield	Balliet Elementary School	Construction	Accelerated Repair	Roof		Leftfield, LLC	Gale Associates, Inc.	-	Building Enclosure Associates, LLC
201602810360	Springfield	Balliet Middle School	Design Development	Accelerated Repair	Windows / Doors		Leftfield, LLC	Gale Associates, Inc.	W.J. Mountford Company	Building Enclosure Associates, LLC



201502810025	Springfield	Brightwood	Feasibility Study	Core Program			Skanska USA Building, Inc	-	-	-
201502810035	Springfield	Daniel B Brunton	Construction	Accelerated Repair	Windows / Doors		Skanska USA Building, Inc	CBI Consulting Inc.	Five Star Building Corp.	Building Enclosure Associates, LLC
201102810030E	Springfield	Elias Brookings	Closeout	Core Program	New Construction	CM@R	Arcadis U.S., Inc.	Drumme Rosane Anderson, Inc.	Morganti/Aquadro & Cerruti	BVH Integrated Services, P.C.
201402810328	Springfield	John F Kennedy Middle	Closeout	Accelerated Repair	Windows / Doors		Arcadis U.S., Inc.	Gale Associates, Inc.	Lambrian Construction Corp.	Building Enclosure Associates, LLC
201402810110	Springfield	Kensington Avenue	Closeout	Accelerated Repair	Windows / Doors		Arcadis U.S., Inc.	Gale Associates, Inc.	Alpha Contracting Associates, Inc.	Building Enclosure Associates, LLC
201602810110	Springfield	Kensington Avenue	Construction	Accelerated Repair	Roof		Leftfield, LLC	Gale Associates, Inc.	Greenwood Industries, Inc.	Building Enclosure Associates, LLC
201602810330	Springfield	M Marcus Kiley Middle	Design Development	Accelerated Repair	Windows / Doors		Leftfield, LLC	Gale Associates, Inc.	-	Building Enclosure Associates, LLC
201602810140	Springfield	Mary M Lynch	Construction	Accelerated Repair	Roof		Leftfield, LLC	Gale Associates, Inc.	Greenwood Industries, Inc.	Building Enclosure Associates, LLC
201502810155	Springfield	Mary M Walsh	Construction	Accelerated Repair	Windows / Doors		Skanska USA Building, Inc	CBI Consulting Inc.	PDS Engineering and Construction, Inc.	Building Enclosure Associates, LLC
201702810355	Springfield	South End Middle School	OPM Selection	Accelerated Repair	Windows / Doors		-	-	-	-
201502810550	Springfield	Springfield Public Day High School	Construction	Accelerated Repair	Windows / Doors		Skanska USA Building, Inc	CBI Consulting Inc.	Westfield Construction Co., Inc.	Building Enclosure Associates, LLC
201502810350	Springfield	STEM Middle Academy	Construction	Accelerated Repair	Roof		Skanska USA Building, Inc	CBI Consulting Inc.	Westfield Construction Co., Inc.	Building Enclosure Associates, LLC
201602810045	Springfield	William N Deberry	Eligibility Period	Core Program			-	-	-	-
201402850025	Stoughton	Joseph H Gibbons	Building Complete	Accelerated Repair	Roof, Windows / Doors		Atlantic Construction and Management, Inc.	CGKV Architects, Inc.	A&A Window Products, Inc.	Building Enclosure Associates, LLC
201302850505	Stoughton	Stoughton High	Construction	Core Program	New Construction	CM@R	Compass Project Management, Inc.	Drumme Rosane Anderson, Inc.	Consigli Construction Company, Inc.	Fitzemeyer & Tocci Associates, Inc.
201502850020	Stoughton	West Elementary	Construction	Accelerated Repair	Windows / Doors		Compass Project Management, Inc.	CBI Consulting Inc.	Alpha Contracting Associates, Inc.	Building Enclosure Associates, LLC
201602920006	Swansea	Elizabeth S Brown	Design Development	Accelerated Repair	Windows / Doors		Skanska USA Building, Inc	Tighe & Bond, Inc.	-	Simpson Gumpertz & Heger Inc.
201502930007	Taunton	Edmund Hatch Bennett	Building Complete	Accelerated Repair	Roof, Windows / Doors		Arcadis U.S., Inc.	CSS Architects Incorporated	TRAC Builders, Inc.	Gale Associates, Inc.
201502930042	Taunton	Joseph H Martin	Building Complete	Accelerated Repair	Roof, Windows / Doors		Arcadis U.S., Inc.	CSS Architects Incorporated	TRAC Builders, Inc.	Gale Associates, Inc.
201402930015	Taunton	Mulcahey Elementary School	Schematic Design	Core Program	New Construction		CGA Project Management	Dore & Whittier Architects, Inc.	-	-
201502950025	Tewksbury	Louise Davy Trahan	Designer Selection	Core Program			HEERY	-	-	-
200802950505	Tewksbury	Tewksbury Memorial High School	Closeout	Core Program	New Construction - Model School	DBB	HEERY	Symmes Maini & McKee Associates, Inc.	CTA Ventures	Sebesta Blomberg & Associates, Inc.
201502960005	Tisbury	Tisbury Elementary	Schematic Design	Core Program			Daedalus Projects Inc	Turowski2 Architecture, Inc.	-	-
201602980005	Topsfield	Proctor Elementary	Design Development	Accelerated Repair	Roof		Compass Project Management, Inc.	The S/L/A/M Collaborative	-	Gale Associates, Inc.
201602980010	Topsfield	Steward Elementary	Design Development	Accelerated Repair	Roof		Compass Project Management, Inc.	The S/L/A/M Collaborative	-	Gale Associates, Inc.
201507730025	Triton	Pine Grove	Design Development	Core Program	Addition / Renovation		Pinck & Co., Inc.	Dore & Whittier Architects, Inc.	-	BVH Integrated Services, P.C.
201403010505	Tyngsborough	Tyngsborough High School	Final Audit Approved	Accelerated Repair	Roof, Boiler		Municipal Building Consultants, Inc.	CSS Architects Incorporated	Ambient Temperature Corporation  Greenwood Industries, Inc.	Colliers International
200907750305	Wachusett	Mountview Middle School	Building Complete	Core Program	New Construction	DBB	Town employee	Lamoureux Pagano & Associates, Inc.	CTA Construction Co., Inc.	Fitzemeyer & Tocci Associates, Inc.
201403080505	Waltham	Waltham High School	Feasibility Study	Core Program			NV5 (fka Joslin, Lesser + Associates Inc.)	Symmes Maini & McKee Associates, Inc.	-	-
201503100003	Wareham	John W. Decas Elementary School	Construction	Accelerated Repair	Roof, Boiler		Colliers International	ICON architecture, inc.	Nadeau Corporation	Bard, Rao + Athanas Consulting Engineers, LLC   Gale Associates, Inc.



201503100017	Wareham	Minot Forest	Designer Selection	Core Program			PMA Construction Services -	-	-	
201503140305	Watertown	Watertown Middle	Construction	Accelerated Repair	Windows / Doors		exPERTcon, Inc.	Gale Associates, Inc.	Homer Contracting	Thompson & Lichtner Co., Inc.
201403150005	Wayland	Claypit Hill School	Closeout	Accelerated Repair	Windows / Doors		Pinck & Co., Inc.	CGKV Architects, Inc.	Lockheed Window Corporations	Russo Barr Associates, Inc.
201603150020	Wayland	Loker School	Design Development	Accelerated Repair	Windows / Doors		Colliers International	CBI Consulting Inc.	-	Thompson & Lichtner Co., Inc.
200903160015	Webster	Park Avenue Elementary School	Closeout	Core Program	New Construction	DBB	Hill International Company	Dore & Whittier Architects, Inc.	CTA Construction Co., Inc.	Cannon Design
201403170305	Wellesley	Wellesley Middle	Closeout	Accelerated Repair	Windows / Doors		Arcadis U.S., Inc.	CSS Architects Incorporated	Paul J. Rogan Co., Inc.	Gale Associates, Inc.
201103220005G	West Boylston	Major Edwards Elementary	Closeout	Green Repair	Windows / Doors	DBB	URS Corporation	Reinhardt Associates, Inc.	-	Cannon Design
201503230005	West Bridgewater	Spring Street School	Closeout	Accelerated Repair	Roof		PCA 360	TSKP Studio, LLC	Capeway Roofing Systems, Inc.	Thompson & Lichtner Co., Inc.
201003230505	West Bridgewater	West Bridgewater Middle-Senior High School	Building Complete	Core Program	New Construction	DBB	Colliers International	Flansburgh Associates, Inc.	CTA Construction Co., Inc.	Cannon Design
201503320007	West Springfield	Philip G Coburn	Designer Selection	Core Program			NV5 (fka Joslin, Lesser + Associates Inc.)	-	-	-
200903320505	West Springfield	West Springfield High School	Final Audit Approved	Core Program	New Construction - Model School	DBB	Colliers International	Symmes Maini & McKee Associates, Inc.	Fontaine Brothers, Inc.	Turner Facilities Management Solutions
201603210010	Westborough	Annie E Fales	Eligibility Period	Core Program			-	-	-	-
200903210305	Westborough	Gibbons Middle School	Building Complete	Core Program	Repair	CM@R	HEERY	Habeeb & Associates Architects, Inc.	Gilbane Building Company	BVH Integrated Services, P.C.
200903250020	Westfield	Abner Gibbs Elementary School	Construction	Core Program	New Construction - Model School	DBB	Skanska USA Building, Inc	Jones Whittsett Architects, Inc.	Fontaine Brothers, Inc.	Horizon Engineering Associates, LLP
201703260004	Westford	Abbot Elem	OPM Selection	Accelerated Repair	Roof		Leftfield, LLC	Raymond Design Associates, Inc.	-	-
201303260025	Westford	Col John Robinson	Closeout	Accelerated Repair	Windows / Doors	DBB	Colliers International	Gale Associates, Inc.	GTC Construction Management	CBI Consulting Inc.
201303260007	Westford	Day Elementary	Closeout	Accelerated Repair	Windows / Doors	DBB	Colliers International	Gale Associates, Inc.	J.J. Cardosi, Inc.	CBI Consulting Inc.
201403310305	Westport	Westport Middle	Schematic Design	Core Program	New Construction		Daedalus Projects Inc	Jonathan Levi Architects LLC	-	-
201503360020	Weymouth	Maria Weston Chapman Middle School	Feasibility Study	Core Program			Hill International Company	HMFH Architects, Inc.	-	-
201703360105	Weymouth	Thomas W. Hamilton Primary School	OPM Selection	Accelerated Repair	Boiler		-	-	-	-
201703360110	Weymouth	Wessagusset	OPM Selection	Accelerated Repair	Boiler		-	-	-	-
200903420505	Wilmington	Wilmington High School	Building Complete	Core Program	New Construction	CM@R	NV5 (fka Joslin, Lesser + Associates Inc.)	Dore & Whittier Architects, Inc.	Gilbane Building Company	Symmes, Maini & McKee Associates
201003440505	Winchester	Winchester High School	Building Complete	Core Program	Addition / Renovation	CM@R	Skanska USA Building, Inc	Symmes Maini & McKee Associates, Inc.	Consigli Construction Company, Inc.	RDK Engineers
200803460505	Winthrop	Winthrop High School	Closeout	Core Program	New Construction	CM@R	Skanska USA Building, Inc	HMFH Architects, Inc.	Gilbane Building Company	WSP USA
201203470060	Woburn	Wyman	Construction	Core Program	New Construction		Municipal Building Consultants, Inc.	DiNisco Design, Inc.	CTA Construction Co., Inc.	Fitzemeyer & Tocci Associates, Inc.
201603480020	Worcester	Belmont Street Community	Construction	Accelerated Repair	Windows / Doors		Watermark Environmental, Inc.	Tighe & Bond, Inc.	-	Russo Barr Associates, Inc.
201603480050	Worcester	Chandler Elem Community	Construction	Accelerated Repair	Windows / Doors, Boiler		Watermark Environmental, Inc.	Tighe & Bond, Inc.	-	BVH Integrated Services, P.C.   Russo Barr Associates, Inc.
201303480060	Worcester	Columbus Park	Closeout	Accelerated Repair	Windows / Doors, Boiler	DBB	Architectural Consulting Group, LLC	The S/L/A/M Collaborative	Contractor's Network, Inc.	RDK Engineers   Russo Barr Associates, Inc.
201603480512	Worcester	Doherty Memorial High	Eligibility Period	Core Program			-	-	-	-
201703480095	Worcester	Elm Park Community	OPM Selection	Accelerated Repair	Windows / Doors		-	-	-	-
201503480090	Worcester	Flagg Street	Construction	Accelerated Repair	Windows / Doors		Arcadis U.S., Inc.	CSS Architects Incorporated	J.J. Cardosi, Inc.	Russo Barr Associates, Inc.





201503480177	Worcester	Francis J McGrath Elem	Construction	Accelerated Repair	Windows / Doors		Arcadis U.S., Inc.	CSS Architects Incorporated	J.J. Cardosi, Inc.	Russo Barr Associates, Inc.
201603481004	Worcester	Gerald Creamer Center	Construction	Accelerated Repair	Windows / Doors, Boiler		Watermark Environmental, Inc.	Tighe & Bond, Inc.	-	BVH Integrated Services, P.C.   Russo Barr Associates, Inc.
201503480115	Worcester	Grafton Street	Building Complete	Accelerated Repair	Windows / Doors, Boiler		Arcadis U.S., Inc.	CSS Architects Incorporated	J.J. Cardosi, Inc.	Rist-Frost-Shumway Engineering, P.C.   Russo Barr Associates, Inc.
201503480140	Worcester	Jacob Hiatt Magnet	Construction	Accelerated Repair	Windows / Doors		Arcadis U.S., Inc.	CSS Architects Incorporated	J.J. Cardosi, Inc.	Russo Barr Associates, Inc.
201703480160	Worcester	Lincoln Street	OPM Selection	Accelerated Repair	Roof, Windows / Doors		-	-	-	-
201203480200	Worcester	Nelson Place	Building Complete	Core Program	New Construction	CM@R	Tishman Construction Corporation of MA	Lamoureux Pagano & Associates, Inc.	Fontaine Brothers, Inc.	Bard, Rao + Athanas Consulting Engineers, LLC
201403480520	Worcester	South High Community	Schematic Design	Core Program	New Construction		HEERY	Lamoureux Pagano & Associates, Inc.	-	-
201303480230	Worcester	Tatnuck	Closeout	Accelerated Repair	Windows / Doors	DBB	Architectural Consulting Group, LLC	The S/L/A/M Collaborative	GVW, Inc.	Russo Barr Associates, Inc.
201703480235	Worcester	Thorndyke Road	OPM Selection	Accelerated Repair	Windows / Doors		-	-	-	-
201603480026	Worcester	Wawecus Road School	Construction	Accelerated Repair	Windows / Doors		Watermark Environmental, Inc.	Tighe & Bond, Inc.	-	Russo Barr Associates, Inc.
201303480225	Worcester	Worcester Arts Magnet Sch	Closeout	Accelerated Repair	Windows / Doors	DBB	Architectural Consulting Group, LLC	The S/L/A/M Collaborative	GVW, Inc.	Russo Barr Associates, Inc.
201303480420	Worcester	Worcester East Middle	Closeout	Accelerated Repair	Boiler	DBB	Architectural Consulting Group, LLC	The S/L/A/M Collaborative	Contractor's Network, Inc.	RDK Engineers
201503500003	Wrentham	Delaney	Construction	Accelerated Repair	Roof		P3 Inc.	Turowski2 Architecture, Inc.	-	Gale Associates, Inc.

**APPENDIX B**  
**2017 & 2018 ESTIMATED BID DATES**

## 2017 ESTIMATED BID DATES

Note bid dates are Estimates ONLY. Please contact Districts for exact information.

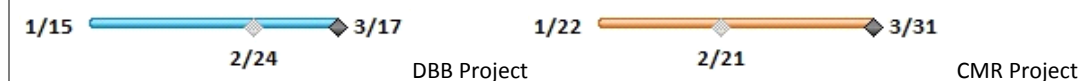
Total Project Budget denotes total District costs and does not denote the basis of the MSBA Total Facilities Grant.

District	Enrollment	Project Budget	Start	Finish	Construct Budget	Notes	Oct '16	Nov '16	Dec '16	Jan '17	Feb '17	Mar '17	Apr '17	May '17	Jun '17	Jul '17	Aug '17	Sep '17	Oct '17	Nov '17	Dec '17	Jan '18	Feb '18							
							Gantt Chart Data																							
Granby	430	\$ 34.2	Mon 11/7/16	Thu 1/26/17	\$ 26.5	NTP issued: January 2017	<b>Granby - West Street ES</b> 11/7 (Start) — 1/26 (GC Bid)																							
Mount Greylock	535	\$ 64.7	Mon 2/20/17	Thu 5/4/17	\$ 52.3	GMP issued: July 2017	<b>Mt Greylock - Regional HS</b> 2/20 (Start) — 5/4 (GC Bid)																							
Quincy	430	\$ 58.3	Fri 3/17/17	Fri 6/9/17	\$ 46.6	GMP issued: July 2017	<b>Quincy - Sterling Middle School</b> 3/17 (Start) — 6/9 (GC Bid)																							
Hanover	560	\$ 32.4	Wed 5/17/17	Tue 7/18/17	\$ 26.1	NTP Issued: July 2017	<b>Hanover - Sylvester ES</b> 5/17 (Start) — 7/18 (GC Bid)																							
Stoughton	1065	\$ 123.5	Wed 5/24/17	Thu 10/19/17	\$ 97.2	GMP targeted: October 2017	<b>Stoughton High School</b> 5/24 (Start) — 10/19 (GC Bid)																							
Billerica	1610	\$ 175.9	Mon 6/5/17	Fri 8/25/17	\$ 140.7	GMP issued: September 2017	<b>Billerica Memorial High School</b> 6/5 (Start) — 8/25 (GC Bid)																							
Dedham	200	\$ 33.2	Fri 7/21/17	Fri 9/8/17	\$ 26.2	NTP issued: September 2017	<b>Dedham - Early Childhood Education Center</b> 7/21 (Start) — 9/8 (GC Bid)																							
Needham	430	\$ 65.9	Wed 8/16/17	Wed 9/27/17	\$ 45.5	NTP targeted: October 2017	<b>Needham - Hillside Elementary School</b> 8/16 (Start) — 9/27 (GC Bid)																							
Narragansett	580	\$ 47.6	Wed 8/30/17	Wed 10/11/17	\$ 36.5	NTP targeted: October 2017	<b>Narragansett - Templeton Elementary School</b> 8/30 (Start) — 10/11 (GC Bid)																							
Bourne	460	\$ 39.9	Wed 10/4/17	Tue 11/21/17	\$ 30.9	NTP targeted: November 2017	<b>Bourne - Peebles Elementary School</b> 10/4 (Start) — 11/21 (GC Bid)																							
Newton	480	\$ 49.0	Wed 10/4/17	Tue 11/28/17	\$ 36.2	GMP targeted: November 2017	<b>Newton - Cabot Elementary School</b> 10/4 (Start) — 11/28 (GC Bid)																							
<b>Total</b>	<b>6780</b>	<b>\$ 724.7</b>			<b>\$ 564.7</b>		<b>10/25</b>																							

Note: Budget values are in millions.

The project start date represents the Filed-Sub bid solicitation date, gray diamond Filed-Sub bid date, and the black diamond GC Bids / GMP Execution.

10/04/17



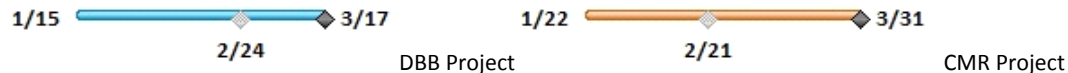
**2018 ESTIMATED BID DATES**

Note bid dates are Estimates ONLY. Please contact Districts for exact information.

Total Project Budget denotes total District costs and does not denote the basis of the MSBA Total Facilities Grant.

District	Enrollment	Project Budget	Start	Finish	Construct Budget	Notes	Oct '17	Nov '17	Dec '17	Jan '18	Feb '18	Mar '18	Apr '18	May '18	Jun '18	Jul '18	Aug '18	Sep '18	Oct '18	Nov '18	Dec '18	
							Minuteman Reg. School District	628	\$ 144.9	Wed 11/15/17	Tue 1/16/18	\$ 119.2	GMP targeted: January 2018		<b>Minuteman Regional Voc. Tech. HS.</b>							
								11/15	12/7	1/16												
Millis	515	\$ 52.8	Tue 1/9/18	Wed 3/28/18	\$ 42.6	GMP targeted: April 2018				1/9	<b>Millis - Clyde Brown ES</b>		3/28									
											1/29											
Triton	415	\$ 39.0	Thu 2/1/18	Thu 3/29/18	\$ 30.2	GMP targeted: April 2018				2/1	<b>Triton Pine Grove Elementary School</b>		3/29									
											3/6											
Somerville	1590	\$ 256.0	Mon 3/12/18	Mon 7/2/18	\$ 199.0	GMP targeted: July 2018					3/12	<b>Somerville High School</b>			6/4	7/2						
Braintree	1180	\$ 83.5	Tue 5/1/18	Thu 6/28/18	\$ 67.7	GMP targeted: June 2018							5/1	<b>Braintree East Middle School</b>		6/5	6/28					
Saugus	1360	\$ 160.7	Tue 5/8/18	Mon 7/2/18	\$ 127.7	GMP targeted: July 2018							5/8	<b>Saugus High School</b>		6/5	7/2					
<b>Total</b>	<b>5688</b>	<b>\$ 736.8</b>			<b>\$ 586.5</b>																	

Note: Budget values are in millions.  
 The project start date represents the Filed-Sub bid solicitation date, gray diamond Filed-Sub bid date, and the black diamond GC Bids / GMP Execution.



APPENDIX C  
CONSTRUCTION STATUS REPORT

**Projects in Construction  
MSBA Grant Basis and Maximum Grant Amount  
Data Reported as of October 4, 2017**

Core Program and Waitlist Totals			\$2,281,345,007															\$1,269,780,987
Project	Grade	Contractor	Total Construction Cost*	Projected Enrollment	PFA or Bid Data	Proposed Sq.Ft.	Construction Cost/Sq.Ft.	Building Cost	Building Cost/Sq.Ft.	Procurement Type	Construction Start Date	Substantial Completion	Schedule Variance (days)	Physical Progress	Change Orders	Change Orders %	Construction Status	Est Max Total Facilities Grant
<b>CAPITAL PIPELINE PROJECTS IN CONSTRUCTION</b>																		
<b>Core Program Totals</b>			<b>\$2,272,380,007</b>															<b>\$1,259,649,181</b>
Abington Frolio Jr Hs	Junior High School	Brait Builders Corp.	\$78,791,215	1,115	Bid	235,370	\$335	\$61,468,040	\$261	Design/Bid/Build	03-Dec-15	18-Jul-17	45 ahead	97%	\$1,052,347	1.366%	Final site work is under way and minor commissioning and punch list work remains.	\$48,528,486
Athol-Royalston Riverbend	Elementary School	Fontaine Brothers, Inc.	\$31,594,000	545	Bid	95,726	\$330	\$24,859,000	\$260	Design/Bid/Build	08-Dec-14	14-Jun-16	0	100%	\$1,931,020	6.112%	Final site work has been completed. Commissioning and punch list work remains ongoing.	\$26,011,620
Carver Carver Elementary School	Elementary School	CTA Construction Co., Inc.	\$41,426,767	750	Bid	112,350	\$369	\$26,491,831	\$236	Design/Bid/Build	27-Sep-16	22-Jun-18	0	39%	\$183,892	0.466%	Roofing, exterior windows and exterior wall assemblies are near complete and the building is weather tight. In-wall and overhead MEPs are 60% complete and interior rough carpentry is now well underway with 90% of light gauge metal framing completed and approximately 30% of drywall installed. Site utilities are substantially complete with the exception of those within the footprint of the existing buildings, and the binder course has been placed for the roadway loop around the building. It is anticipated that interior finishes in the northernmost classroom wing will be underway by Nov/Dec 2017.	\$25,248,962
Dedham Early Childhood Center	Elementary School	C.J. Marbardy, Inc.	\$23,213,553	200	PFA	50,345	\$461	\$13,010,627	\$258	Design/Bid/Build	09-Sep-17	21-Dec-18	0	100%	\$358,682	1.545%	Demolition of the existing building has been completed and construction has commenced the first week of October 2017.	\$10,513,482
Georgetown Penn Brook	Elementary School	Brait Builders Corp.	\$32,875,975	770	Bid	98,000	\$335	\$26,976,145	\$275	Design/Bid/Build	26-Sep-13	20-May-15	0	100%	\$3,897,226	11.854%	Final landscaping and Commissioning have been completed. Punch list work is ongoing.	\$18,864,538
Granby West St	Elementary School	Fontaine Brothers, Inc.	\$26,453,000	430	PFA	68,760	\$385	\$16,570,000	\$241	Design/Bid/Build	07-Feb-17	17-Aug-18	0	35%	(\$26,411)	-0.100%	Kitchen and cafeteria renovation is completed. The new addition is in progress. Roofing is in progress and exterior sheathing, AVB, insulation, window frames, brick and metal panels as well.	\$16,867,064
Hanover Sylvester	Elementary School	Brait Builders Corp.	\$23,075,675	560	PFA	97,099	\$238	\$17,678,117	\$182	Design/Bid/Build	24-Jul-17	17-Jun-19	0	5%	0	0.000%	Steel erection is ongoing and topping-off of phase I is scheduled for November 7, 2017.	\$15,861,754
New Bedford John Hannigan	Elementary School	H.V. Collins Co., Inc.	\$29,792,732	400	Bid	74,056	\$402	\$20,536,621	\$277	Design/Bid/Build	11-Aug-16	02-Oct-17	17 behind	86%	\$174,489	0.586%	The project team has agreed on a November 2017 move-in date to allow them to deliver the entire school at once, including all exterior site work. Current work includes roof which is approximately 98% complete. Third floor work includes painting and tile touch up and finishes. Second floor work includes mill and case work, ceiling grid work and finish painting, tiling, continuing flooring and finishes. First floor work includes light fixtures, bathroom tiling and flooring, ceiling grid work, exit devices and controls, continuing drywall work and the kitchen equipment installation.	\$22,168,797
North Middlesex North Middlesex Reg	High School	CTA Construction Co., Inc.	\$64,995,000	870	Bid	180,530	\$360	\$49,909,000	\$276	Design/Bid/Build	25-May-15	07-Jul-17	30 behind	98%	\$466,212	0.717%	The project continues to complete the remaining outstanding work. The project team is working to finish the commissioning of the building. Final completion of the building (Phase 1 of 2) mid-October 2017. Phase 1 Substantial Completion was achieved on August 23, 2017.	\$38,471,881
Peabody J Henry Higgins Middle	Middle School	Bacon-Agostini Construction Joint Venture	\$70,679,700	1,340	Bid	227,314	\$311	\$52,186,177	\$230	Design/Bid/Build	10-Mar-14	05-Aug-16	0	100%	\$1,890,252	2.674%	Landscape punch list is ongoing.	\$38,652,137
Plymouth Plymouth South High	High School	Bacon-Agostini Construction Joint Venture	\$90,266,700	1,005	Bid	248,081	\$364	\$66,744,766	\$269	Design/Bid/Build	06-Jul-15	12-May-17	14 behind	97%	\$447,693	0.527%	Work associated with the remaining site development and new entrance road began in June 2017 and will continue through the Summer of 2018. It is anticipated that the main access road and demolition of the existing high school will be completed by December 2017. This will leave the ball fields east and west of the new access road remaining to be completed in Spring 2018.	\$45,733,725
Provincetown Provincetown High	High School	E. Amanti & Sons, Inc.	\$5,709,882	111	Bid	62,645	\$91	\$3,671,169	\$59	Design/Bid/Build	14-Mar-16	09-Dec-16	0	100%	\$692,071	12.121%	Further exploration of existing envelope leaks in the Principal's office and the building's electrical entry point as well as a sinkhole near the gym ancillary door will be addressed during Summer of 2017.	\$3,258,431
Revere Staff Sergeant James J. Hill School	Elementary School	CTA Construction Co., Inc.	\$31,975,839	690	Bid	103,650	\$308	\$27,439,789	\$265	Design/Bid/Build	25-Mar-14	17-Aug-15	0	99%	\$110,455	0.345%	Punch list items remain for completion.	\$28,099,048
Scituate Gates Intermediate School	Middle School	Bacon-Agostini Construction Joint Venture	\$52,596,801	710	Bid	164,803	\$319	\$42,947,412	\$261	Design/Bid/Build	08-Dec-15	14-Aug-17	0	95%	\$2,062,995	3.922%	Punch list is ongoing. Testing and balancing are in progress. Site work nearing completion.	\$20,436,585
Wachusett Mountview Middle	Middle School	CTA Construction Co., Inc.	\$43,122,257	800	Bid	126,200	\$342	\$28,959,805	\$229	Design/Bid/Build	21-May-14	11-Apr-16	0	98%	\$993,666	2.304%	Incomplete commissioning items related to HVAC equipment remain for completion in order to move project into the closeout phase.	\$24,279,591
West Bridgewater West Bridgewater Jr-Sr	Junior High School	CTA Construction Co., Inc.	\$46,267,914	625	Bid	141,250	\$328	\$35,071,188	\$248	Design/Bid/Build	01-Oct-13	09-Jul-15	0	100%	\$622,162	1.345%	Commissioning and punch list work ongoing.	\$26,385,058
Westfield Abner Gibbs	Elementary School	Fontaine Brothers, Inc.	\$25,578,000	600	Bid	95,573	\$268	\$21,444,000	\$224	Design/Bid/Build	24-Aug-12	01-Jun-19	0	2%	\$0	0.000%	Westfield, Abner Gibbs Elementary School, stopped construction in December of 2012 due to a preliminary injunction based upon project site status as Article 97 "Protected Land". The Supreme Judicial Court has ruled that the proposed site is subject to provisions of Article 97.	\$20,004,463
Woburn Wyman	Elementary School	CTA Construction Co., Inc.	\$27,017,841	410	Bid	70,701	\$382	\$18,251,786	\$258	Design/Bid/Build	10-Jan-17	11-Jul-18	0	40%	\$51,107	0.189%	Building envelope activities are progressing with building insulation, masonry work and roofing. Building interior work continues with interior metal framing, mechanical, electrical, plumbing, and fire protection work. Mechanical plenums have been erected and prepared for mechanical equipment installation and connections.	\$13,974,154
Auburn Auburn Middle	Middle School	Fontaine Brothers, Inc.	\$36,412,806	560	Bid	100,395	\$363	\$23,350,958	\$233	CM-at-Risk	27-Feb-14	07-Jul-15	0	100%	(\$74,522)	-0.210%	The Change Order Proposal for the new Gym Dehumidification System was approved by the Auburn School Building Committee on June 27, 2017. The submittals for the specified unit have been provided and materials have been ordered. The estimated availability is November 2017. Fontaine estimates that the installation time frame will be approximately 1 week.	\$19,761,870
Beverly Briscoe Middle	Middle School	Bacon-Agostini Construction Joint Venture	\$90,129,432	1,395	PFA	231,509	\$389	\$62,790,920	\$271	CM-at-Risk	24-Dec-15	30-Mar-18	0	59%	\$1,266,695	1.405%	MEP work is ongoing throughout the building. Drywall, painting, and casework installation is progressing on upper floors in classroom wings. Tile installation has begun in restrooms and corridors. Windows and fiber cement siding are nearing completion in the area of the classroom wings. Curtain wall installation is progressing on front facade with siding work to follow. Roof is complete but for one small area.	\$47,562,459
Billerica Billerica Memorial High School	High School	Shawmut Design and Construction	\$140,773,848	1,610	PFA	325,191	\$433	\$79,526,376	\$245	CM-at-Risk	13-Feb-17	04-Mar-19	0	9%	\$0	0.000%	Steel erection continues throughout several areas of the building. Underground utility work and concrete slab installations are ongoing.	\$72,127,499
Boston Dearborn	Middle School	Gilbane Building Company	\$60,245,740	600	Bid	128,304	\$470	\$36,655,002	\$286	CM-at-Risk	08-Sep-15	27-Dec-17	0	76%	\$474,823	0.788%	Window installation is nearly complete. Masonry is complete in most areas and metal panel installation is progressing. Drywall, painting, ceiling, and tile installation is ongoing in the interior. Atrium skylight is complete and staging has been removed. Finish plumbing and lighting fixtures are being installed. Casework installation has begun.	\$36,033,391
Brookline Edward Devotion	Elementary School	Shawmut Design and Construction	\$92,237,854	1,010	Bid	227,087	\$406	\$57,910,095	\$255	CM-at-Risk	11-Jul-16	31-Jul-18	0	41%	\$89,478	0.097%	Mechanical, electrical and plumbing work continues to progress throughout the building. Exterior masonry work is underway.	\$25,197,463
Chelsea Clark Avenue School	Middle School	W. T. Rich Company Inc.	\$46,046,367	670	Bid	115,235	\$400	\$29,311,076	\$254	CM-at-Risk	23-Feb-15	29-Jun-18	0	70%	\$834,288	1.812%	Structural steel is complete for the Phase 2 building, along with elevated slab construction. Preparations underway for the start of Phase 2 roof installation. Underground plumbing and electrical work is progressing to allow completion of the Phase 2 slab on grade. Punch list and commissioning items continued in the occupied Phase 1 building.	\$36,163,680
Haverhill Caleb Dustin Hunking	Middle School	Shawmut Design and Construction	\$49,544,769	1,005	Bid	147,996	\$335	\$35,181,852	\$238	CM-at-Risk	20-Apr-15	16-Dec-16	0	95%	\$2,018,208	4.074%	Contractors have fully demobilized from the site. Minor warranty work is ongoing. Commissioning has been completed, with the final commissioning report to be issued.	\$39,518,874
Holbrook Holbrook Jr Sr High	High School	Consigli Construction Company, Inc.	\$78,135,643	1,095	Bid	217,353	\$359	\$52,399,810	\$241	CM-at-Risk	24-Jun-15	15-Jun-17	0	89%	\$80,338,651	103.443%	The substantial completion date was met. Final site work is under way. Project team working on commissioning and punch list items that remain.	\$53,832,918
Hopkinton Center	Elementary School	Colantonio, Inc.	\$35,140,982	395	Bid	83,256	\$422	\$21,864,684	\$263	CM-at-Risk	03-Oct-16	31-Jul-18	0	47%	\$1,267,014	3.606%	Roofing is nearing completion. Interior framing is completed in all wings. Overhead fire protection, temp electrical, and ducts are in progress. Plumbing rough-in is in progress. All concrete is done except for the sidewalks. Offsite sanitary and storm is near completion. Underground gas and electrical lines are ready to be connected. Exterior of the building and masonry, window frames are in progress.	\$13,377,226

**Projects in Construction  
MSBA Grant Basis and Maximum Grant Amount  
Data Reported as of October 4, 2017**

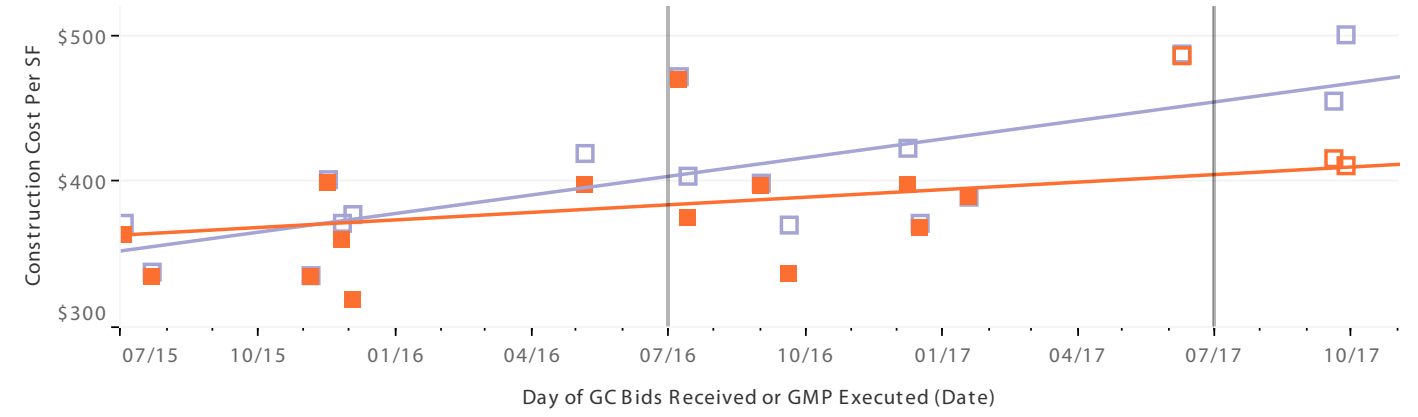
Core Program and Waitlist Totals			\$2,281,345,007																\$1,269,780,987
Project	Grade	Contractor	Total Construction Cost*	Projected Enrollment	PFA or Bid Data	Proposed Sq.Ft.	Construction Cost/Sq.Ft.	Building Cost	Building Cost/Sq.Ft.	Procurement Type	Construction Start Date	Substantial Completion	Schedule Variance (days)	Physical Progress	Change Orders	Change Orders %	Construction Status	Est Max Total Facilities Grant	
<b>CAPITAL PIPELINE PROJECTS IN CONSTRUCTION</b>																			
<b>Core Program Totals</b>			<b>\$2,272,380,007</b>																<b>\$1,259,649,181</b>
Lunenburg Lunenburg High	Junior High School	Shawmut Design and Construction	\$57,994,017	820	Bid	169,018	\$343	\$41,982,415	\$248	CM-at-Risk	15-Aug-14	30-Jun-16	0	100%	\$1,188,726	2.050%	Final site work to be completed.	\$34,122,826	
Milford Woodland	Elementary School	Shawmut Design and Construction	\$48,375,101	985	Bid	132,539	\$365	\$34,861,130	\$263	CM-at-Risk	01-Apr-15	28-Jul-16	0	99%	\$1,472,225	3.043%	Testing and balancing of building systems are ongoing. Site work and AstroTurf installations are ongoing. Punch list and additional owner requested changes/work are in progress.	\$27,418,234	
Minuteman Voc Tech Minuteman Regional High	High School	Gilbane Building Company	\$119,200,892	628	PFA	258,332	\$461	\$71,673,473	\$277	CM-at-Risk	21-Aug-17	02-Dec-19	0	2%	\$0	0.000%	Early site package work including site clearing and rock blasting has begun.	\$44,139,213	
Mount Greylock Mt Greylock Reg High	High School	Turner Construction Company	\$52,310,706	535	PFA	132,800	\$394	\$30,982,991	\$233	CM-at-Risk	30-Mar-17	14-Nov-18	0	32%	\$52,266,600	99.916%	GMP was executed on 8/2/17. Construction continues on the building envelope with light gauge framing and sheathing. Light gauge framing partitions are on going. Gymnasium and 3-story structure roof is complete. Work continues on the gym to have it available to the owner in the first week of November. Mechanical, electrical and plumbing trades continue their rough-ins. Exterior masonry and the 1-story roof is ongoing. Building is to be substantially complete on 4/20/18, the remainder of the old building and site work is to be complete November 2018.	\$32,491,074	
Newton Cabot	Elementary School	W. T. Rich Company Inc.	\$36,695,776	480	PFA	84,262	\$435	\$24,396,982	\$290	CM-at-Risk	11-Jul-17	14-Jun-19	0	2%	\$120,000	0.331%	Early packages have been given NTP: Abatement/Demo, Site, Concrete and Steel. Abatement is complete and demo of the modular classrooms and 1956 wing is nearly complete. Selective demo is in progress in the 1929 building. Miscellaneous site preparation work has begun and utility infrastructure work has begun. The adjacent culvert project is expected to begin excavation soon with which the project will coordinate.	\$13,636,546	
North Reading North Reading High	Junior High School	Gilbane Building Company	\$101,328,353	1,370	Bid	267,939	\$378	\$66,726,592	\$249	CM-at-Risk	01-May-12	21-Aug-15	0	99%	\$3,512,026	3.466%	Substantial completion date was met. Two punch list items remain for completion and final review; review of tree plantings and replacement of safety glass.	\$47,071,882	
Pittsfield Taconic High	High School	Gilbane Building Company	\$97,757,373	920	Bid	246,520	\$397	\$56,984,184	\$231	CM-at-Risk	21-Mar-16	29-Jun-18	0	50%	\$1,294,924	1.325%	Mechanical and electrical installations continued throughout the new school building. Finishes began with the start of painting and ceiling grid installations. Envelope construction neared completion with window installations, metal panels, and masonry. Binder pavement on access roads was placed to prepare for the start of school in the existing building.	\$71,935,008	
Quincy Reay E Sterling Middle	Middle School	Bond Brothers Construction	\$46,550,994	430	PFA	95,155	\$489	\$29,569,323	\$311	CM-at-Risk	20-Jun-17	05-Sep-19	0	2%	\$0	0.000%	Approval by Massachusetts Historical Commission is complete, with a fully executed Memorandum of Agreement. Filed subbids have been received, the GMP is with the city for execution. Early sitework Construction has begun.	\$28,520,041	
Stoughton Stoughton High	High School	Consigli Construction Company, Inc.	\$100,961,191	1,065	PFA	214,860	\$470	\$58,510,773	\$272	CM-at-Risk	12-Jun-17	22-Aug-19	0	9%	\$58,459,722	60.126%	Installation of site utilities (drain and sewer lines) continues currently, working on the north side of the new building. Excavation, backfill, compaction for foundations are underway at "Building B" (north east corner of site). Rebar and formwork has also begun for foundations at "Building B", with the first concrete pour (roughly 30 yds.) completed. Construction trailers have arrived onsite, set up is ongoing.	\$51,078,994	
Westborough Sarah W Gibbons Middle	Middle School	Gilbane Building Company	\$21,595,600	550	Bid	110,000	\$196	\$12,693,993	\$115	CM-at-Risk	22-Jun-16	25-Aug-17	0	94%	\$680,368	3.151%	Substantial completion date was met. The project is in punch list phase and additional owner requested work is being performed. Commissioning of mechanical units is ongoing.	\$11,113,998	
Wilmington Wilmington High	High School	Gilbane Building Company	\$67,558,835	960	Bid	192,443	\$351	\$48,060,314	\$250	CM-at-Risk	30-Apr-13	12-Feb-15	0	99%	\$2,881,004	4.458%	Resolution of the auditorium and gym floor issues are ongoing.	\$35,674,893	
Winchester Winchester High School	High School	Consigli Construction Company, Inc.	\$101,404,577	1,370	Bid	278,925	\$364	\$70,862,283	\$254	CM-at-Risk	23-Apr-14	31-Aug-17	0	99%	\$6,306,442	6.219%	Project attained Certificate of Occupancy on 8/29/17 and achieved Substantial Completion on 8/31/17. Project team is working to complete the punch list and furniture, fixture and equipment move in.	\$42,187,027	
Worcester Nelson Place	Elementary School	Fontaine Brothers, Inc.	\$46,546,300	600	Bid	111,256	\$418	\$29,503,564	\$265	CM-at-Risk	01-Jul-15	31-May-17	0	91%	(\$147,809)	-0.318%	Punch list work is ongoing. Miscellaneous interior finishes and site work are in progress. Final clean up of demolition continues.	\$33,324,289	
<b>Waitlist Totals</b>			<b>\$8,965,000</b>				<b>\$139</b>		<b>\$108</b>									<b>\$10,131,806</b>	
New Bedford Taylor School at the Sea Lab Marine Science Education Center	N/A	M. O'Connor Contracting, Inc.	\$8,965,000	284	Bid	64,533	\$139	\$6,967,355	\$108	Design/Bid/Build	28-Nov-15	01-Nov-16	0	99%	\$457,938	5.108%	Work continues on punch list items.	\$10,131,806	

APPENDIX D  
CONSTRUCTION COST CHART

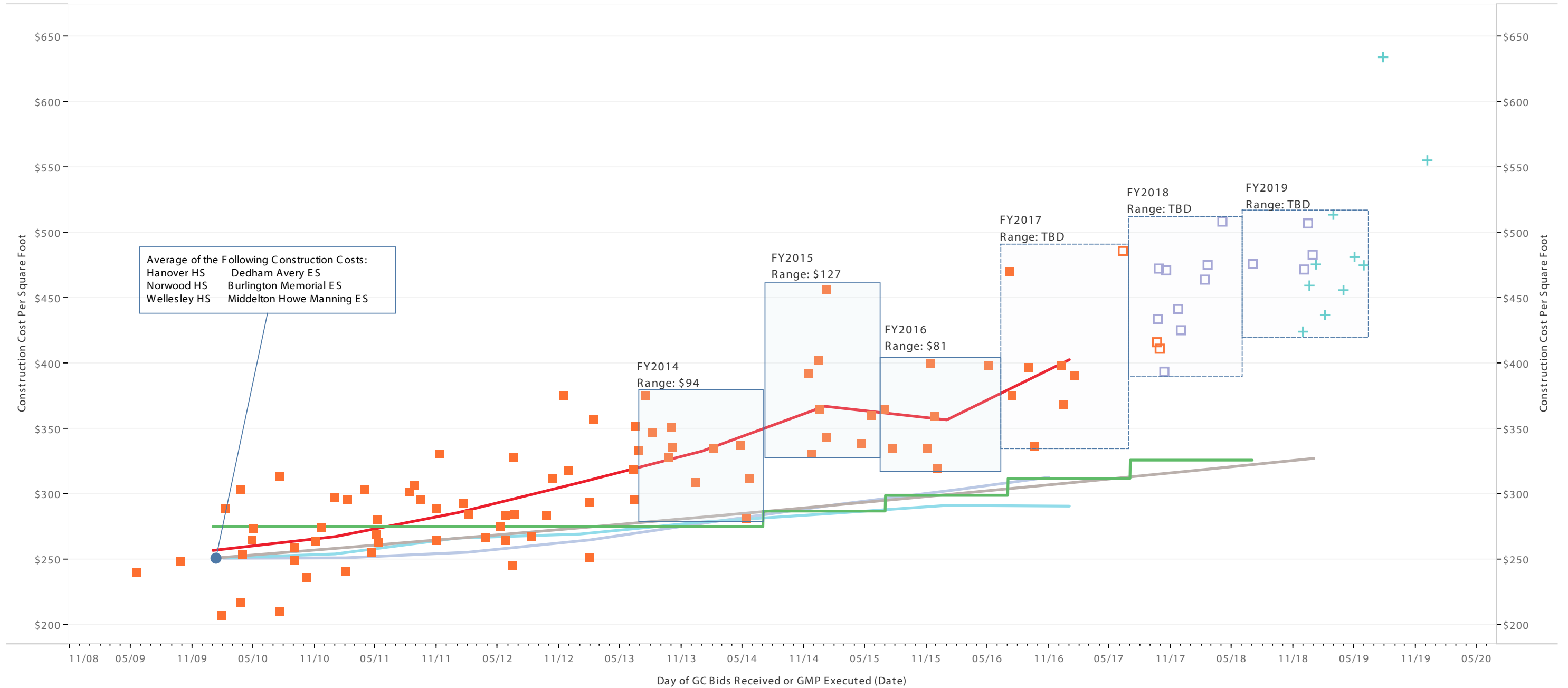


- Legend
- PFA Amended
  - BID
  - SD
  - + PSR
  - Statutory Limit
  - 3% Escalation
  - BLS PPI
  - RLB Comparative Cost - Boston
  - Average

Construction Costs, Bid vs. SD



School Construction Costs Compared to Common Economic Indicators



**APPENDIX E**  
**FY18 PROJECTS SUBSTANTIALLY COMPLETE**



# North Middlesex Regional High School

*Contractor-* CTA Construction Co.

*OPM-* HEERY

*Designer-* Symmes Maini & McKee

Total Project Budget:

\$88,183,582

Construction Budget:

\$64,995,000

Maximum Facilities Grant:

\$39,308,632





# Scituate | Lester J Gates Middle School

*Contractor-* Bacon-Agostini Construction

*OPM-* Daedalus Projects Inc

*Designer-* Dore & Whittier  
Architects

Total Project Budget:  
\$69,433,232

Construction Budget:  
\$52,596,801

Maximum Facilities Grant:  
\$20,751,053





# Westborough | Sarah W. Gibbons Middle School

*Contractor-* Gilbane Building

*OPM-* HEERY

*Designer-* Habeeb &  
Associates

Total Project Budget:  
\$26,678,734

Construction Budget:  
\$21,418,655

Maximum Facilities Grant:  
\$11,548,719





# Winchester | Winchester High School

*Contractor-* Consigli Construction

*OPM-* Skanska USA

*Designer-* Symmes Maini &  
McKee

Total Project Budget:  
\$131,513,741

Construction Budget:  
\$101,404,577

Maximum Facilities Grant:  
\$43,100,458

