

Massachusetts School Building Authority

CAPITAL PLANNING PROJECT OVERVIEW REPORT

January 25, 2017

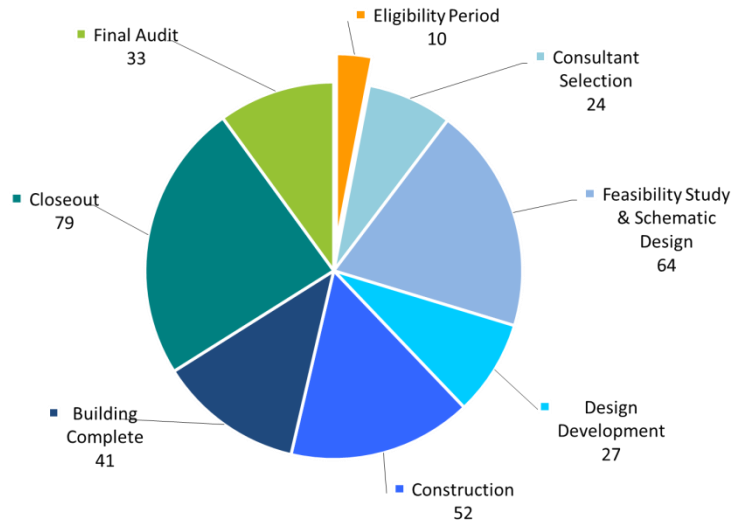
TABLE OF CONTENTS

Capital Pipeline Overview	2-3
Statements of Interest (SOIs)	4
Core Program	5-16
Eligibility Period	5
Consultant Selection	6-7
Feasibility Study	8
Schematic Design	9
Commissioning	10
Design Development	11
Summary of Bid Data	12
Construction	13-15
Accelerated Repair Program	16-20
Project Variances	21
<i>Appendices</i>	
(A) <i>Project Status List</i>	
(B) <i>2016 and 2017 Estimated Bid Dates</i>	
(C) <i>Construction Status Report</i>	

CAPITAL PIPELINE OVERVIEW

Status of Current Projects

A total of 330 projects that have received invitations from the Board of Directors (“Board”) to collaborate with the Massachusetts School Building Authority (“MSBA”) are currently in the MSBA’s Eligibility Period and Capital Pipeline. The summary chart provides the number of projects in Eligibility Period and each phase of the Capital Pipeline. For a detailed look at the Capital Pipeline projects, please go to www.massschoolbuildings.org/building and select “Capital Pipeline Status Chart”.



Capital Planning Updates:

The following FY 17 objectives have been completed and approved by the Board:

- The staff recommendation to remove the incentive points for use of the Construction Manager at Risk methodology was approved by the Board at the November 9, 2016 Board Meeting.
- The staff recommendation for revisions to MSBA policy that would allow auditorium and gymnasium spaces above MSBA guidelines at the district’s sole expense for districts that are approved to proceed into Schematic Design on or after January 1, 2017 was approved by the Board at the November 9, 2016 Board Meeting.
- The staff recommendation to remove the previously approved Model School designs from the Model School Program was approved at the November 9, 2016 Board Meeting.

The following objectives are a forecast of what will be reviewed by staff in the second half of FY 17:

- Review of the MSBA’s sustainability policies in relation to the 9th building code with a recommendation anticipated at the February 15, 2017 Board Meeting. Review of the Green Schools Incentive Points is underway and additional presentations are anticipated in the second half of FY 17.
- Staff recommendation for information to be observed in a Post Occupancy review and the best approach to conduct school visits.
- 2016 school survey visits to 1432 schools are complete as of January 31, 2017. Additional questions regarding technology and data for schools that were not visited are currently being collected by the MSBA. The data collected will be verified and reviewed with a target to issue the report by the end of June 2017.

2016/2017 Progress Report

- Statement of Interest (“SOI”) 2016
 - Recommendations for SOIs filed by February 12, 2016 have been completed as of the July 20, 2016 Board Meeting.
 - The deadline to file SOIs for consideration in the Core Program closed on April 8, 2016. Staff submitted recommendations for Senior Study Visits at the August 24, 2016 Facilities Assessment Subcommittee (“FAS”) meeting, completed its due diligence in late November 2016, and prepared staff recommendations for Invitation to Eligibility Period at the December 14, 2016 FAS meeting. Upon the Board’s approval of recommendations for Invitation to Eligibility Period, the 2016 Statement of Interest business will be concluded.
- Statement of Interest (“SOI”) 2017
 - The 2017 SOI submittal period opened on January 6, 2017. The deadline to file SOIs is:
 - Friday, February 17, 2017 for the Accelerated Repair Program; and
 - Friday, April 7, 2017 for the Core Program.
- Eligibility Period
 - There are 10 districts in Eligibility Period, with seven districts anticipating invitation to Feasibility Study at the February 15, 2017 Board Meeting.
- Feasibility Study/Schematic Design
 - Four districts received MSBA approval for selection of an Owner’s Project Manager (“OPM”).
 - Four districts have completed Designer Selection.
 - 21 districts are anticipating submittals for the preferred schematic solutions between February 2017 and August 2017.
 - 14 districts are anticipating submittals for project funding agreements between February 2017 and August 2017.
- Accelerated Repair Program (“ARP”)
 - Districts that were invited into the 2016 ARP are completing their preliminary requirements and receiving consultant assignments. Two districts received approval for Project Funding Agreements in November 2016. MSBA staff anticipates recommendations for 20 Project Funding Agreements at the February 15, 2017 Board Meeting.
- Construction Costs – Core Program
 - Of the 11 bids and/or executions of a Guaranteed Maximum Price (“GMP”) in 2016, 11 have been reported.
 - Of the 11 bids and/or executions of a GMP in 2016, all 11 bids were within the estimated budget.
 - MSBA staff anticipates nine projects will bid in 2017.
- Substantial Completion
 - Thirteen projects reached substantial completion in 2016.
 - Ten projects are projected to reach substantial completion in 2017.

STATEMENTS OF INTEREST (SOIs)

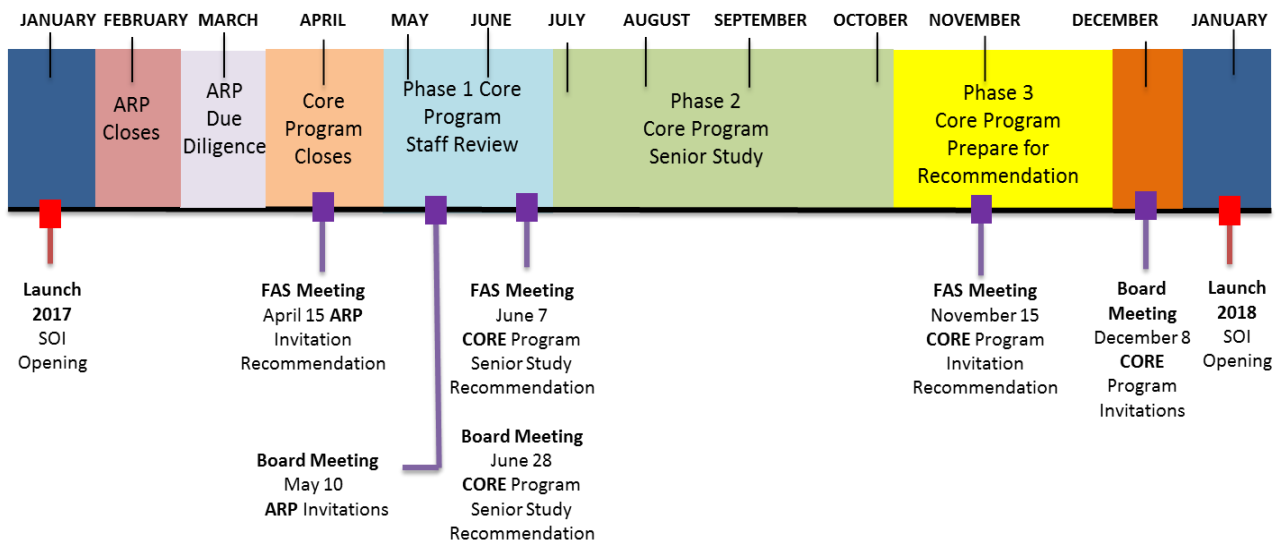
2016 SOI Process

MSBA staff anticipates recommendations for Invitation to Eligibility Period at the February 15, 2017 Board Meeting, which concludes 2016 Statement of Interest business.

2017 SOI Process

The 2017 SOI submittal period opened on January 6, 2017. The deadline to file SOIs for consideration in the ARP, which is primarily for the repair and/or replacement of roofs, windows/doors, and/or boilers in an otherwise structurally sound facility, is Friday, February 17, 2017.

The deadline to file SOIs for consideration in the Core Program, which is primarily for projects beyond the scope of ARP, including extensive repairs, renovations, addition/renovations, and new school construction, will close Friday, April 7, 2017.



CORE PROGRAM

ELIGIBILITY PERIOD

There are 10 districts remaining in Eligibility Period, and eight projects have secured funding.

An agreed-upon enrollment is a key pre-requisite for the MSBA to commence a Feasibility Study with a district. To begin the enrollment projection process, a district must file enrollment information utilizing the MSBA's online enrollment projection tool. All of the districts currently in Eligibility Period have completed their online enrollment projection information. Of the 10 districts, seven districts have signed their enrollment certifications and three enrollment certifications are pending.

Based upon the schedules anticipated by the districts for completion of Eligibility Period requirements, MSBA staff anticipates recommending seven districts in Eligibility Period for an Invitation to Feasibility Study at the February 15, 2017 Board Meeting and the remaining districts in May 2017.

District	School	Date of Invitation to Eligibility Period	30 days	60 days	90 days		180 days		270 days	Date of Invitation to Feasibility Study (Estimated)
			ICC	SBC	Online Enrollment Projection Info	Ed Profile Questionnaire	Maintenance Documents	Enrollment Certification	Local Authorization	
Arlington	Arlington HS	5/25/2016	X	X	X	X	X	X	X	Feb-17
Framingham	Fuller MS	5/25/2016	X	X	X	X	X	X	X	Feb-17
Marblehead	Elbridge Gerry ES	3/30/2016	X	X	X	X	X	X	X	Feb-17
Shrewsbury	Beal Early Childhood Center	3/30/2016	X	X	X	X	X	X	X	Feb-17
Springfield	Brightwood ES	7/20/2016	X	X	X	X	X	X	X	Feb-17
Wareham	Minot Forest ES	3/30/2016	X	X	X	X	X	X	X	Feb-17
Tewksbury	Louise Davy Trahan ES	5/25/2016	X	X	X	X	X	X	X	Feb-17
Central Berkshire	Wahconah Regional HS	7/20/2016	X	X	X	X	X			May-17
Amesbury	Amesbury ES	7/20/2016	X	X	X	X				May-17
West Springfield	Colburn ES	7/20/2016	X	X	X	X	X		X	May-17

CONSULTANT SELECTION

Owner's Project Manager ("OPM") Selection

After the district has completed all Eligibility Period requirements and has received a Board Invitation to Feasibility Study, the district procures an OPM. Since the last report, one district has completed its OPM selection (shaded in the table below). Currently, there are 10 districts in the Capital Pipeline that are in the process of procuring an OPM.

District	School	Anticipated Selection
Natick	John F. Kennedy Middle School	January 2017
Holyoke	Lt. Elmer J. McMahon ES	TBD
Foxborough	Mabelle ES	February 2017
Dennis-Yarmouth	Mattacheese MS	March 2017
Ludlow	Chapin Street ES	March 2017
Manchester Essex RSD	Manchester Memorial Elementary	March 2017
Weymouth	Chapman MS	March 2017
Belmont	Belmont HS	April 2017
Northbridge	W. Edward Balmer ES	April 2017
Pentucket	Pentucket RHS	April 2017
Danvers	Ivan G. Smith ES	May 2017

Designer Selection

After a district has selected and executed a contract with an OPM, the district selects a Designer by utilizing either a local designer selection process for projects under \$5 million or the MSBA’s Designer Selection Panel (“DSP”) for projects over \$5 million. Since the last report, four districts have completed their Designer selection (shaded in the table below). There is currently one district in the Capital Pipeline that is in the process of procuring a Designer.

District	School	Anticipated Selection
Tisbury	Tisbury Elementary	November 2016
Fall River	BMC Durfee High	December 2016
Harvard	Harvard Elementary	December 2016
Marlborough	Richer ES	January 2017
Natick	John F. Kennedy MS	March 2017

For additional information on the selected consultant teams, see Appendix A.

FEASIBILITY STUDY

Once a district has procured an OPM and Designer, the district and the district’s consultants must complete two Feasibility Study submittals, the Preliminary Design Program, and the Preferred Schematic Report, prior to Board consideration to proceed into Schematic Design. Based on the most recent data and schedules provided to the MSBA by districts, the MSBA anticipates that 21 districts will present their Preferred Schematic Designs to the Board at the February, May, June, and August Board Meetings.

District	School	Anticipated PS Board Date
Blue Hills	Blue Hills Regional Technical HS	February 2017
Braintree	East MS	February 2017
Cape Cod Regional Vocational Technical	Cape Cod Regional Technical HS	February 2017
Ipswich	Winthrop ES	February 2017
Lexington	Hastings ES	February 2017
Saugus	Saugus HS	February 2017
Triton RSD	Pine Grove ES	February 2017
Westport	Westport MS	February 2017
Clarksburg	Clarksburg ES	May 2017
Easthampton	Maple ES	May 2017
Everett	Keverian K-8	May 2017
Middleborough	Middleborough HS	May 2017
Waltham	Waltham HS	May 2017
Bristol County	Bristol County Agriculture HS	June 2017
Lowell	Lowell HS	June 2017
Worcester	South High Community School	June 2017
Taunton	Mulcahey ES	June 2017
Tisbury	Tisbury ES	June 2017
Attleboro	Attleboro HS	August 2017
Fall River	Durfee HS	August 2017
Harvard	Harvard ES	August 2017
Marlborough	Richer ES	TBD

SCHEMATIC DESIGN

Prior to consideration by the Board for Project Scope and Budget Agreement authorization, a district must submit a Schematic Design to the MSBA for review. Based on the most recent data and schedules provided to the MSBA by districts, the MSBA anticipates that 14 districts will appear before the Board for Project Scope and Budget Agreement authorization at the upcoming February, May, June and August Board Meetings.

District	School	Anticipated PS&B Board Date
Lynn	Pickering MS	February 15, 2017
Somerville	Somerville HS	February 15, 2017
Millis	Clyde F. Brown ES	May 10, 2017
Blue Hills	Blue Hills RVTHS	May 10, 2017
Braintree	East MS	June 2017
Ipswich	Winthrop ES	June 2017
Lexington	Maria Hastings ES	June 2017
Triton	Pine Grove ES	June 2017
Westport	Westport MS	June 2017
Saugus	Saugus HS	June 2017
Blue Hills	Blue Hills Regional Technical HS	August 2017
Cape Cod Regional Vocational Technical	Cape Cod Regional Technical HS	August 2017
Clarksburg	Clarksburg ES	August 2017
Lexington	Hastings ES	August 2017

COMMISSIONING

The MSBA assigns a Commissioning Consultant after a district has secured local funding for the Board approved project. Since the last report, the MSBA has assigned Commissioning Consultants to five additional projects presented in the table below.

District	School	Program	Estimated Const. Cost (million)	Commissioning Consultant	Contract Amount
New Bedford	Parker ES 2016 ARP	2016 ARP	\$6.6	WSP USA	\$24,200
Carver	Carver MSHS 2016 ARP	2016 ARP	\$4.7	Symmes, Maini & McKee	\$51,030
Bourne	Peebles Elementary School	Core	\$30.9	BVH Integrated Services	\$84,309
Newton	Cabot Elementary School	Core	\$36.3	Colliers International	\$91,002
Needham	Hillside Elementary School	Core	\$45.5	RFS Engineering	\$91,608

To date, the MSBA has executed 376 Commissioning Consultant contracts, totaling \$27.0 million. To date, 250 contracts have been completed.

The table below represents the status of commissioning assignments sorted by the fiscal year in which the commissioning work orders were issued.

Fiscal Year	No. Work Orders Issued	Value of Work Orders Issued	Total Invoiced*	Percent Complete
FY10	31	\$4,231,376	\$4,273,277	100%
FY11	95	\$6,132,890	\$6,058,460	99%
FY12	52	\$4,450,761	\$4,384,306	99%
FY13	55	\$3,364,697	\$3,338,642	99%
FY14	47	\$2,604,062	\$3,284,214	92%
FY15	44	\$2,277,711	\$1,562,867	69%
FY16	44	\$3,385,137	\$927,928	27%
FY17	8	\$579,696	\$4,998	1%
Total	376	\$27,026,330	\$22,834,691	

*Includes approved additional services over value of Work Order

DESIGN DEVELOPMENT

After a district has secured local funding and has entered into a Project Funding Agreement (“PFA”) with the MSBA, the district enters into the Design Development Phase. Currently, there are 27 projects in the Design Development Phase with a total estimated construction cost of approximately \$723.7 million. Of those 27 projects, 15 are ARP Projects and 12 are Core Program Projects. The 12 Core Program Projects in Design Development have a total estimated construction cost of approximately \$686.3 million and are listed below.

Elementary School Districts	Middle School Districts	High School Districts	Other Grade Configurations
Bourne (3-5) Dedham (PK-K) Granby (K-6) Hanover (2-4) Narragansett RSD (PK-5)* Needham (K-5) Newton (K-5)	Quincy (5-8)	Billerica (9-12) Mount Greylock RSD (9-12) Stoughton (9-12) Minuteman RSD (9-12)	

**Town is currently under Audit Review for Fiscal Year 2015 and 2016. Town is seeking Municipal Financial Oversight Board assistance for project funding.*

District Design Submittals

During Design Development, districts submit three design submittals (Design Development, 60% Construction Documents, and 90% Construction Documents) for MSBA review. MSBA staff review documents to ensure the project is still in compliance with the PFA. The chart below indicates the number of submittals received by the MSBA to date by type and by fiscal year.

Fiscal Year	DD Reviews	60% Reviews	90% Reviews	Total Reviews
2010	5	0	0	5
2011	21	24	20	65
2012	12	24	28	64
2013	20	20	19	59
2014	15	13	14	42
2015	6	12	13	31
2016	10	10	8	28
2017	6	6	7	19
Totals	95	109	109	313

SUMMARY OF BID DATA

Based on the most recent data and schedules provided by the districts, 11 projects bid in 2016, and the MSBA anticipates nine projects will bid in 2017.

Year	Number of Projects	Design Basis for Enrollment	Project Budget	Construction Budget
2016	11	6,605	\$665.20 million	\$549.80 million
2017	9	5,888	\$733.09 million	\$580.26 million
Grand Total	20	12,493	\$1.40 billion	\$1.13 billion

Note: These numbers are based on preliminary information received from the District and are subject to further review and calculation.

CONSTRUCTION

When a district issues a Notice to Proceed, the project is advanced to the Construction Phase. Currently, there are 52 projects in the Construction Phase with a total estimated construction cost of \$1.14 billion. Of those 52 projects, 34 are ARP Projects, and 18 are Core Program Projects. This does not include the 41 projects that have reached substantial completion and are currently in the Building Complete Phase. The 18 Core Program Projects have a total estimated construction cost of \$1.07 billion and are listed below.

Elementary School Districts	Middle and Middle/High School Districts	High School Districts	Other Grade Configurations
Carver (PK-5) Hopkinton (PK-1) New Bedford (PK-5) Woburn (K-5) Westfield* (K-5)	<u>Middle School Districts</u> Beverly (5-8) Chelsea (5-8) Scituate (6-8) Westborough (7-8) <u>Middle/High School Districts</u> Boston - Dearborn MS (6-12)	North Middlesex RSD (9-12) Pittsfield (9-12) Plymouth (9-12) Winchester (9-12)	Abington (PK; 5-12) Brookline (K-8) Holbrook (PK-12) Worcester (PK-6)

**Note: Westfield, Abner Gibbs Elementary School, stopped construction in December of 2012 due to a preliminary injunction based upon project site status as Article 97 "Protected Land".*

Amendment to the Project Funding Agreement (PFA)

Upon receipt of construction bids or the execution of a GMP, a district submits the Contractor's Schedule of Values to the MSBA. MSBA staff and the district collaborate to reconcile the actual construction costs against the estimated construction budget and an amendment to the PFA is executed to reflect bid costs. The chart, shown below, is the number of amendments to PFAs, listed by fiscal year.

Fiscal Year	Total Amendments
FY2012	30
FY2013	31
FY2014	31
FY2015	17
FY2016	22
FY2017	6

Substantial Completion

Thirteen projects achieved Substantial Completion in 2016.

Project	Enrollment	Contractor	OPM	Designer	Est. Substantial Completion Date	Actual Substantial Completion Date	Est. Actual Difference (days)
Newton Angier	465	W.T. Rich	Joslin, Lesser + Associates Inc.	DiNisco Design Partnership	12/18/15	1/5/16	-18
Wachusett Mountview MS	800	CTA Construction, Inc.	Gary Kaczmarek	Lamoureux Pagano & Assoc. Inc.	4/19/16	4/11/16	8
Lynn Thurgood Marshall MS	1100	Walsh Bros.	Joslin, Lesser + Associates Inc.	Raymond Design	6/6/16	4/20/16	47
Peabody J. Henry Higgins MS	1340	Bacon-Agostini Construction (JV)	Daedalus	DiNisco	5/27/16	8/5/16	-70
Athol-Royalston RSD Riverbend ES	545	Fontaine Brothers	SMMA	Mount Vernon Group	6/14/16	6/13/16	1
Lunenburg Jr. HS	820	Shawmut Design	Joslin, Lesser + Associates Inc.	Tappe Associates	6/30/16	5/24/16	37
Winthrop Jr/Sr HS	970	Gilbane	Skanska	HMFH	6/30/16	6/30/16	0
Gloucester West Parish ES	355	W.T. Rich	KBA	Dore & Whittier	7/15/16	7/15/16	0
Milford Woodland ES	985	Shawmut Design	Joslin, Lesser + Associates Inc.	HMFH	7/28/16	7/20/16	0
New Bedford Taylor at Sea Lab	284	M. O'Connor	ACG	Mount Vernon Group	6/29/16	8/31/16	-33
Northborough Lincoln Street ES	270	Brait Bros.	Collier	Lamoureux Pagano & Assoc. Inc.	9/1/16	8/31/16	1
Provincetown Provincetown HS	118	E. Amanti & Sons and Capeway Roofing Systems	Atlantic Construction and Management	Raymond Design	10/31/16	12/9/16	-39
Haverhill Caleb Hunking MS	1005	Shawmut Design	Joslin, Lesser + Associates Inc.	JCJ Architecture	12/30/16	12/16/16	-14

For additional information on the construction status for each of these projects, see Appendix C.

Ten projects are scheduled to reach Substantial Completion in 2017. They are listed in the table below.

Project	Enrollment	Contractor	OPM	Designer	Est. Substantial Completion Date	Actual Substantial Completion Date	Est. Actual Difference (days)
Plymouth Plymouth South HS	1005	Bacon-Agostini	Ted Gentry	Ai3	5/5/17		
Worcester Nelson Place ES	600	Fontaine Brothers	Tishman	Lamoureux Pagano	6/1/17		
Holbrook PreK-12	1095	Consigli	SMMA	Flansburgh	6/5/17		
Boston Dearborn MS	600	Gilbane	Daedalus	Jonathan Levi	6/28/17		
North Middlesex Reg. HS	1115	CTA Construction	Heery	SMMA	7/14/17		
Abington Frolio Jr HS	870	Brait Builders	KBA	Ai3	7/18/17		
Scituate Gates IS	710	Bacon-Agostini	Daedalus	Dore & Whittier	7/26/17		
Winchester Winchester HS	1370	Consigli	Skanska	SMMA	8/3/17		
Westborough Sarah W. Gibbons MS	550	Gilbane	Heery	Habeeb & Associates Architects	8/16/17		
New Bedford Hannigan ES	400	H.V. Collins	Daedalus	Turowski2 Architecture	8/27/17		

For additional information on the construction status for each of these projects, see Appendix C.

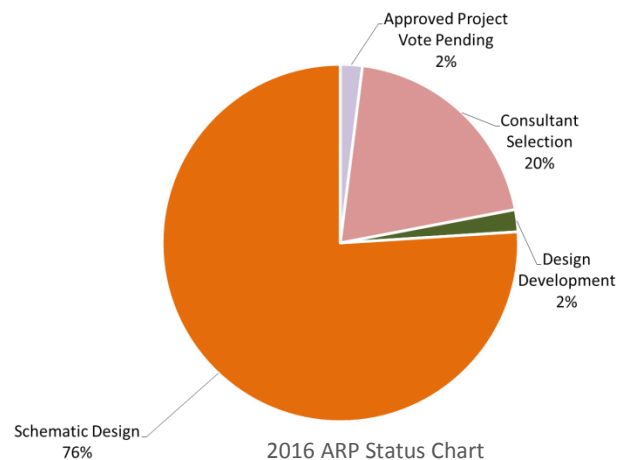
ACCELERATED REPAIR PROGRAM

Currently, there are a total of 99 districts, representing 220 projects, either active or completed in the ARP. All new information that has been updated since the last report is italicized.

Repair Program	Number of Districts	Number of Projects	Total Project Budgets	Maximum Facility Grants	Number of Projects Final Audit Approved
2016 Accelerated	28	49	<i>\$13,945,073</i>	<i>\$6,286,469</i>	0
2015 Accelerated	24	43*	\$136,680,652	<i>\$91,974,052</i>	0
2014 Accelerated	34	47	\$108,410,084	\$65,388,035	9
2013 Accelerated	25	45	\$94,650,790	\$54,662,711	32
2012 Accelerated	24	36	\$63,009,653	\$38,267,952	33
Green	93	189	\$366,649,226	\$222,889,218	181

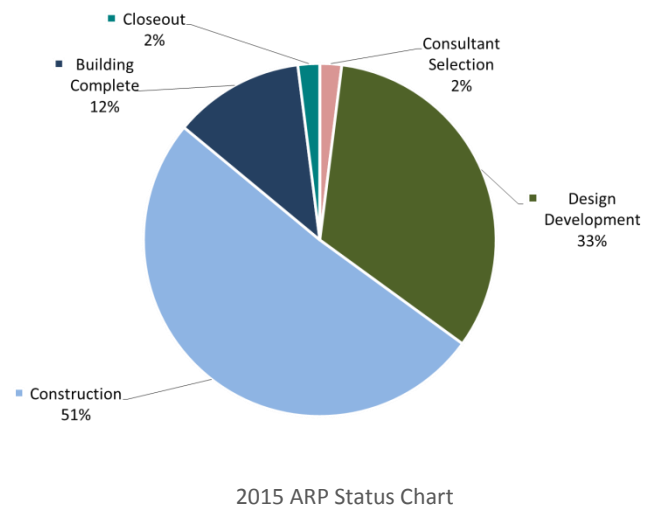
2016 Accelerated Repair Program

- Invitations – 28 districts, representing 49 projects
 - Scope includes 22 roofs, 16 windows/doors, and 13 boilers
- *Approval for Project Funding Agreement - two districts, representing two projects*
- *Total Project Budgets - \$13,945,073*
- *MSBA Total Facilities Grant - \$6,286,469*



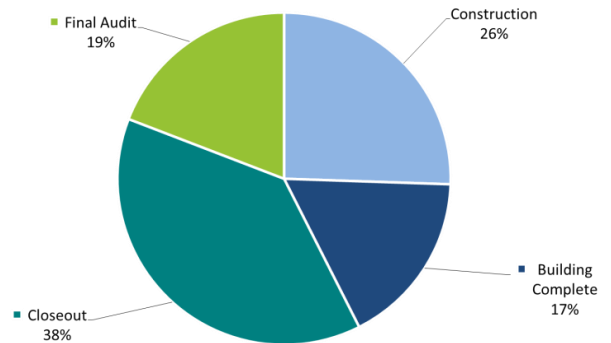
2015 Accelerated Repair Program

- Invitations – 24 districts, representing 44 projects
 - Scope includes 22 roofs, 26 windows/doors, and nine boilers
- SOI Removal – one project
- Approved for Project Funding Agreements – 24 districts, representing 43 projects
- Total Project Budgets - \$136,680,652
- MSBA Total Facilities Grants - \$91,974,052
- *29 of 31 projects reporting bid within estimated budgets*



2014 Accelerated Repair Program

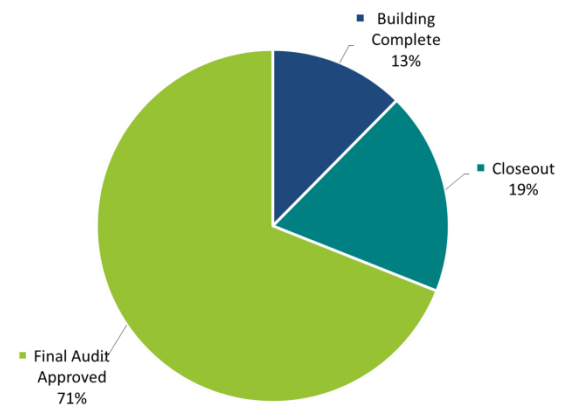
- Invitations – 36 districts, representing 51 projects
- SOI Removal – two districts, representing four projects
- Current 2014 ARP projects – 34 districts, representing 47 projects
 - Scope includes 20 roofs, 25 windows/doors, and 13 boilers
- Approved for Project Funding Agreements – 34 districts, representing 47 projects
- Total Project Budgets - \$108,410,084
- MSBA Total Facilities Grants - \$65,388,035
- Four districts, representing six projects, required schedule extensions following PFA approval
- 85% of reporting projects bid within estimated budget
- *19% of projects have completed Final Audit*



2014 ARP Status Chart

2013 Accelerated Repair Program

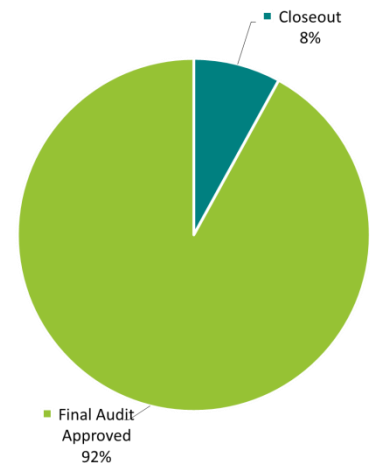
- Invitations – 28 districts, representing 50 projects
- SOI Removals – four districts, representing five projects
- Approved for Project Funding Agreements – 26 districts, representing 47 projects
- Active Projects – 25 districts, representing 45 projects
 - Scope includes 30 roofs, 13 windows/doors, and seven boilers
- Total Project Budgets – \$94,650,790
- MSBA Total Facilities Grants – \$54,662,711
- Four districts, representing seven projects, required schedule extensions following PFA approval
- 82% of projects bid within estimated budget
- *71% of projects have completed Final Audit*



2013 ARP Status Chart

2012 Accelerated Repair Program

- Invitations – 27 districts, representing 39 projects
- SOI Removals – three districts, representing three projects
- Approved Project Funding Agreements – 24 districts, representing 36 projects
- Scope includes 21 roofs, 11 windows/doors, and seven boilers
- Total Project Budgets – \$63,009,653
- MSBA Total Facilities Grants – \$38,267,952
- Five districts, representing nine projects, required schedule extensions following PFA approval
- 86% of projects bid within estimated budget



2012 ARP Status Chart

- 92% of projects have completed Final Audit

Status of Green Repair Program

The Green Repair Program resulted in PFA authorizations totaling \$366,647,226 in Total Project Costs and \$222,889,218 in MSBA grants. Of the 189 projects, 181 have been approved for final grant payments. The eight projects that were not previously approved for final grant payments are substantially complete and require Final Audit.

2015 Accelerated Repair Projects – Construction Estimate vs. 2016-2017

- Staff reported previously on the shaded projects below.
- Staff added *five* new projects to the chart below.
- 29 of 31 reported projects bid within the estimated budget.
- The remaining 11 will bid by the end of March 2017 with an update anticipated at the May 2017 board.

					Total	\$77,397,855	\$55,878,459	\$22,518,796	-	\$15,066,646
District	School	Scope	Project Type	Bid Date	Construction Estimate **	Bid Amount **	Variance from Construction Estimate	Reimbursement Rate	Potential Grant Variance *	
Worcester	Grafton Street School	Windows/Doors Boiler	DBB	Mar-16	\$3,470,847	\$2,972,000	\$498,847	78.95%	\$393,840	
Worcester	Francis J McGrath ES	Windows/Doors	DBB	Mar-16	\$1,211,628	\$941,640	\$269,988	78.95%	\$213,156	
Worcester	Jacob Hiatt Magnet	Windows/Doors	DBB	Mar-16	\$1,647,516	\$1,300,360	\$347,156	78.95%	\$274,080	
Worcester	Flagg Street	Windows/Doors	DBB	Mar-16	\$3,327,388	\$2,242,000	\$1,085,388	78.95%	\$856,914	
New Bedford	Alfred J. Gomes School	Windows/Doors	DBB	Mar-16	\$3,794,672	\$2,718,100	\$1,076,572	80.00%	\$856,736	
Blackstone Valley RSD	Blackstone Valley School	Roof – Partial	DBB	Mar-16	\$892,764	\$717,000	\$175,764	53.53%	\$94,086	
New Bedford	Casmir Pulaski School	Windows/Doors / Boiler	DBB	April-16	\$2,274,474	\$1,926,000	\$348,474	79.58%	\$277,316	
New Bedford	Hayden/McFadden School	Windows/Doors / Boiler	DBB	April-16	\$4,636,946	\$4,202,028	\$434,918	79.58%	\$346,108	
New Bedford	Sgt. Williams H. Carney Academy	Windows/Doors / Boiler	DBB	April-16	\$4,078,525	\$4,208,704	-\$130,179	79.58%	0	
Deerfield	Deerfield ES	Roof	DBB	April-16	\$2,341,276	\$1,589,000	\$752,276	52.06%	\$391,635	
Cambridge	Kennedy-Longfellow School	Roof	DBB	April-16	\$2,804,463	\$1,137,000	\$1,667,463	47.03%	\$784,208	
Ludlow	East Street ES	Roof / Partial Boiler	DBB	April-16	\$2,566,953	\$1,792,829	\$774,124	58.37%	\$451,856	
North Reading	E. Ethel Little School	Roof-Partial	DBB	April-16	\$1,414,932	\$1,290,000	\$124,932	46.58%	\$58,193	
Cambridge	Fletcher/Maynard Academy	Boiler	DBB	April-16	\$600,661	\$624,737	-\$24,076	47.03%	\$0	
West Bridgewater	Spring Street School	Roof	DBB	April-16	\$1,107,449	\$638,000	\$469,449	52.69%	\$247,353	
Quincy	Merrymount	Roof	DBB	May-16	\$1,472,686	\$1,078,975	\$393,711	68.96%	\$271,503	
Chicopee	Belcher	Roof	DBB	May-16	\$724,660	\$452,185	\$272,475	78.95%	\$215,119	
Chicopee	Fairview Middle	Roof	DBB	May-16	\$2,403,119	\$1,318,815	\$1,084,304	78.95%	\$856,085	
Middleborough	Memorial ECC	Roof-Partial	DBB	Jun-16	\$891,117	\$640,000	\$251,117	56.26%	\$141,278	
Revere	Garfield ES	Roof	DBB	Jul-16	\$6,527,919	\$6,124,000	\$403,319	77.47%	\$312,916	
Fairhaven	Hastings Middle	Roof-Partial	DBB	Jul-16	\$633,861	\$481,300	\$152,561	54.79%	\$83,588	
Springfield	Mary M Walsh	Windows/Doors	DBB	Aug-16	\$2,218,786	\$1,479,159	\$739,627	54.79%	\$405,242	
Springfield	Springfield Public Day High School	Windows/Doors	DBB	Aug-16	\$1,313,487	\$1,105,221	\$208,266	80.00%	\$166,613	
Springfield	STEM Middle Academy	Roof-Partial	DBB	Aug-16	\$1,666,499	\$963,321	\$703,178	80.00%	\$562,542	

Wareham	John W. Decas Elementary School	Roof- Partial Boiler	DBB	Aug-16	\$2,019,034	\$1,165,300	\$853,734	70.10%	\$598,468
Springfield	Daniel B Brunton	Windows/Doors	DBB	Sept-16	\$2,233,738	\$1,834,000	\$399,738	80.00%	\$319,790
Leicester	Leicester High	Roof	DBB	Oct-16	\$2,097,427	\$1,321,689	\$775,738	59.21%	\$459,314
Taunton	Edmund Hatch Bennet	Roof/Windows	DBB	Oct-16	\$3,750,583	\$2,049,987	\$1,700,596	73.95%	\$1,257,591
Taunton	Joseph H Martin	Roof/Windows	DBB	Oct-16	\$5,407,623	\$3,474,593	\$1,933,030	73.95%	\$1,429,476
Greenfield	Federal	Boilers, Roof, Windows	DBB	Nov-16	\$4,698,376	\$2,566,916	\$2,131,460	77.47%	\$1,651,242
Leominster	Johnny Appleseed	Roof/Windows	DBB	Nov-16	\$3,168,446	\$1,523,600	\$1,644,846	72.59%	\$1,193,994
				Total	\$77,397,855	\$55,878,459	\$21,518,796		\$15,170,242

*These numbers are based on preliminary information received from the district and are subject to further review and calculation.

Accelerated Repair Projects – Schedule Extension Update

The MSBA has granted districts conditional extensions to their PFAs pending compliance with the following stipulations:

- The district must submit a detailed, revised, construction timeline that explains how the work will be completed at each school; and
- Any costs that are related to a district requesting an extension to the construction schedule will be the sole responsibility of the district and those costs are categorically ineligible for reimbursement by the MSBA.

Schedule delays for these districts can be attributed to local funding issues, lead time for windows, and construction delays on site. In no event have the extended schedules resulted in an increase to the Estimated Maximum Total Facilities Grant, as authorized by the Board.

Six of the 47, 2014 ARP Projects did not meet their anticipated construction completion dates in 2015. These projects have revised construction schedules and were completed in 2016. Staff has reported previously on the six shaded projects listed below. (There is no new activity to report on).

District	School	Scope	Original Construction Completion Date	Updated Construction Completion Date	Reason for Schedule Extension
Orleans	Orleans ES	Partial Window/Door	8/25/2015	8/29/2016	The District and its consultants have determined that the estimated lead time for windows requires construction to be scheduled for 2016.
Springfield	John F. Kennedy MS	Window/Door	12/22/2015	10/28/2016	The District and its consultants have determined that the estimated lead time for windows requires construction to be scheduled for 2016.
Brockton	Ashfield MS	Roof/Boiler	8/31/2015	7/11/2016	The District and its consultants have determined that the bidding for construction in 2016 would better serve the project budget and existing facilities.
Brockton	Gilmore School	Roof/Boiler	8/31/2015	7/11/2016	The District and its consultants have determined that the bidding for construction in 2016 would better serve the project budget and existing facilities.
Medfield	Ralph Wheelock School	Boiler	1/6/2016	8/31/2016	The District and its consultants have determined that the bidding for construction in 2016 would better serve the project budget and existing facility.
Springfield	Kensington International School	Window/Door	11/2/2015	8/19/2016	The District and its consultants have determined that the estimated lead time for windows requires construction to be scheduled for 2016.

One of the 43, 2015 ARP Projects did not meet its construction completion date in 2016. This Project revised its construction schedule and is scheduled to be completed in 2017. Staff has reported previously on the shaded projects listed below. (There is no new activity to report on).

District	School	Scope	Original Construction Completion Date	Updated Construction Completion Date	Reason for Schedule Extension
Quincy	Beechwood Knoll Elementary	Roof Windows/Doors	8/23/2016	8/28/2017	The District and its consultants have determined that bidding for construction in 2017 would better serve the project budget and existing facilities.

PROJECT VARIANCES

Core Program – Total Project Budget Update

Upon receiving the Board’s approval of the Project Scope and Budget, the MSBA and participating districts enter into a Project Funding Agreement, which establishes the Total Project Budget and the Estimated Maximum Total Facilities Grant for an approved project. Staff has reported on budget increases for the 15 projects shaded below at previous Board Meetings. In no event has the increase in budget resulted in an increase to the Estimated Maximum Total Facilities Grant, as authorized by the Board.

District	School	Scope	Project Funding Agreement		PFA Bid Amendment/ Final Audit		Reason for Increase to Total Project Budget
			Total Project Budget	Total Maximum Facilities Grant	Total Project Budget	Total Maximum Facilities Grant	
Andover	Bancroft ES	New	\$44,659,837	\$16,773,753	\$50,374,837	\$16,575,965	The District has appropriated additional funds to cover the costs associated with increased construction costs and additional contingencies for litigation/settlement costs and other ineligible costs.
Burlington	Marshall Simonds MS	Add/Reno	\$32,865,272	\$17,143,365	\$34,221,929	\$15,362,127	The District appropriated at its May 2012 annual town meeting through Articles 18: 19, additional funds for the costs associated with the construction of the new field complex and field lighting replacement.
Essex North Shore Agricultural & Technical School District	Essex North Shore Agricultural & Technical HS	New	\$125,000,000	\$77,500,000	\$133,770,000	\$77,500,000	The Board was informed at the March 30, 2011 meeting that the Total Project Budget had increased due to additional ineligible scope that would be funded by DCAM.
			\$125,000,000	\$77,500,000	\$134,501,368	\$77,500,000	The District has appropriated additional funds to cover the costs associated with increased construction costs for horse tack barn renovations.
Greater New Bedford	Greater New Bedford Vocational and Technical High School	Add/Reno	\$17,099,808	\$13,543,920	\$16,396,429	\$12,258,642	District submitted final project costs that exceeded the total project budget established at bid. Final Costs did not exceed the original total project budget established at Project Funding Agreement.
Lexington	Joseph Estabrook ES	New	\$40,792,248	\$12,250,739	\$43,392,248	\$12,148,491	The District has executed a GMP that exceeds the Construction Budget of the PFA. The District has appropriated additional funds to cover the costs associated with increased construction costs and additional contingencies.
North Reading	North Reading MS/HS	Add/Reno	\$107,727,074	\$49,323,123	\$123,227,074	\$49,323,123	This is a CMR project. The estimated, reconciled construction costs tracked over budget at DD (\$9,746,655 over), 60% (\$4,655,965 over), and 90% (\$15,136,846 over). A Town override vote in March 2013 obtained an additional \$15,500,000 in local funding to proceed.
Revere	Staff Sergeant James J. Hill ES	New	\$45,402,396	\$29,551,048	45,402,396	\$29,551,048	At Project Scope and Budget, the Total Project Budget was approved at \$44,382,396. The City of Revere has increased the land acquisition budget. Therefore, the projected total project budget at PFA has increased to \$45,402,396. Note that the MSBA grant has not changed since the Project Scope and Budget Agreement.
Somerville	East Somerville Community School	Add/Reno	\$33,185,258	\$15,237,996	\$38,006,621	\$15,237,996	At the March 28, 2012 Board Meeting, the Board approved an amendment to the PFA and a \$6.25M District loan.
Uxbridge	Uxbridge HS	New	\$43,000,000	\$22,362,328	\$44,986,479	\$22,362,328	The District has appropriated additional funds to cover the costs associated with the construction of athletic fields originally included in the PFA but which were not included in the bid as the District’s construction contract would have exceeded the budget.
Norfolk County Agricultural	Norfolk County Agricultural HS	Add/Reno	\$28,552,385	\$15,369,712	\$30,589,078	\$13,867,050	The District has executed a Tender Agreement and Completion Agreement Contract, increasing its Total Project Budget, following the termination of its original construction contract.
Northborough	Lincoln Street ES	Add/Reno	\$25,530,553	\$10,407,408	\$25,530,553	\$10,407,408	The MSBA Board Approved Total Project Budget increased by \$60,400 from \$25,470,153 to \$25,530,553 due to the addition of an alternate, for a new ball field added at the District’s request.
Sutton	Sutton MS	Add/Reno	\$59,945,474	\$29,843,511	\$60,130,536	\$27,002,506	The District has executed a Tender Agreement and Completion Agreement Contract, increasing its Total Project Budget, following the termination of its original construction contract.
Weston	Field ES	New	\$31,504,146	\$8,310,510	\$32,654,146	\$8,105,549	District-approved Construction Change Orders exceeded available contingency amount.
Winchester	Winchester HS	Add/Reno	\$129,923,146	\$44,493,270	\$131,513,741	\$43,100,458	The MSBA Board Approved total Project Budget increased due to a construction change order for additional soil abatements at Skillings Field. Note that the increased Total Project Budget will not increase the Maximum Total Facilities Grant.
Winthrop	Winthrop MS/HS	New	\$81,818,740	\$42,582,841	\$81,432,986	\$41,249,005	The MSBA Board Approved Total Project Budget increased due to revised FEMA flood plain requirements which necessitated the elevation of the new building to be raised. Note that the increased Total Project Budget will not increase the Maximum Total Facilities Grant.
Woburn**	Wyman-Hurld ES	New	\$33,705,396	\$14,387,427	TBD*	TBD*	The District had completed a project review with its Conservation Commission and an Order of Conditions was issued on June 12, 2015. A neighborhood group has appealed this Order and it is now under review by DEP. The District has experienced delays in completing its City Council vote for its appropriation and incurred additional costs.

*PFA Bid Amendment has not been developed to calculate a revised Total Facilities Grant amount. The Total Maximum Facilities Grant will not exceed the Board authorized amount in the PFA but, upon review, may decrease.

**Pending an executed Project Funding Agreement.

APPENDIX A PROJECT STATUS LIST



MSBAID	District	School	Project Phase	Project Type	Project Scope	Procurement Type	OPM	Designer	CMGC	Commissioning Consultant
201300080050	Amherst	Wildwood Elementary	Approved Project Vote Pending	Core Program	New Construction	CM@R	NV5 (fka Joslin, Lesser + Associates Inc.)	JCJ Architecture, PC	Fontaine Brothers, Inc.	-
201602010115	New Bedford	John Avery Parker	Approved Project Vote Pending	Accelerated Repair	Windows / Doors		Architectural Consulting Group, LLC	CBI Consulting Inc.	-	WSP USA
201502290510	Peabody	Peabody Veterans Memorial High	Approved Project Vote Pending	Accelerated Repair	Roof		Municipal Building Consultants, Inc.	Civitects PC	-	Thompson & Lichtner Co., Inc.
200906150020	Athol-Royalston	Riverbend School	Building Complete	Core Program	New Construction	DBB	Symmes Maini & McKee Associates	Mount Vernon Group Architects, Inc.	Fontaine Brothers, Inc.	Colliers International
201400440080	Brockton	Barrett Russell School	Building Complete	Accelerated Repair	Windows / Doors		Architectural Consulting Group, LLC	Tighe & Bond, Inc.	Reliable Roofing and Sheet Metal, LLC	Simpson Gumpertz & Heger Inc.
201500490090	Cambridge	Fletcher/Maynard Academy	Building Complete	Accelerated Repair	Boiler		Skanska USA Building, Inc	Tai Soo Kim Partners, LLC	CAM HVAC & Construction, Inc.	Fitzmeyer & Tocci Associates, Inc.
201500490040	Cambridge	Kennedy-Longfellow	Building Complete	Accelerated Repair	Roof		Skanska USA Building, Inc	Tai Soo Kim Partners, LLC	Greenwood Industries, Inc.	Thompson & Lichtner Co., Inc.
200900610021	Chicopee	Chicopee Academy	Building Complete	Core Program	Renovation	DBB	Arcadis U.S., Inc.	Caolo & Bieniek Associates, Inc.	Fontaine Brothers, Inc.	Symmes, Maini & McKee Associates
201500740015	Deerfield	Deerfield Elem	Building Complete	Accelerated Repair	Roof		Pinck & Co., Inc.	Raymond Design Associates, Inc.	MDM Engineering	Russo Barr Associates, Inc.
200800790505	Dracut	Dracut Senior High School	Building Complete	Core Program	Addition / Renovation	DBB	Hill International Company	Mount Vernon Group Architects, Inc.	CTA Construction Co., Inc.	RDK Engineers
201408180605	Franklin County	Franklin County Tech	Building Complete	Accelerated Repair	Windows / Doors		Colliers International	Habeeb & Associates Architects, Inc.	Gardner Construction & Industrial Services	CBI Consulting Inc.
200901050010	Georgetown	Penn Brook Elementary School	Building Complete	Core Program	New Construction	DBB	Municipal Building Consultants, Inc.	Drumrey Rosane Anderson, Inc.	Brait Builders Corp.	Rist-Frost-Shumway Engineering, P.C.
200901070050	Gloucester	West Parish Elementary School	Building Complete	Core Program	New Construction	CM@R	Knight, Bagge & Anderson Inc.	Dore & Whittier Architects, Inc.	W. T. Rich Company Inc.	Fitzmeyer & Tocci Associates, Inc.
201201280035	Haverhill	Caleb Dustin Hunking	Building Complete	Core Program	New Construction	CM@R	NV5 (fka Joslin, Lesser + Associates Inc.)	JCJ Architecture, PC	Shawmut Design and Construction	Colliers International
201201370605	Holyoke	Wm J Dean Voc Tech High	Building Complete	Science Lab Initiative	Addition / Renovation	DBB	Skanska USA Building, Inc	Kaestle Boos Associates, Inc.	RAC Builders, Inc.	BVH Integrated Services, P.C.
201001620505	Lunenburg	Lunenburg High School	Building Complete	Core Program	New Construction	CM@R	NV5 (fka Joslin, Lesser + Associates Inc.)	Tappe Associates, Inc.	Shawmut Design and Construction	Cannon Design
201401750007	Medfield	Ralph Wheelock School	Building Complete	Accelerated Repair	Boiler		-	-	Performance Plumbing and Heating	RDK Engineers
201101850090	Milford	Woodland	Building Complete	Core Program	New Construction	CM@R	NV5 (fka Joslin, Lesser + Associates Inc.)	HMFH Architects, Inc.	Shawmut Design and Construction	Consulting Engineering Services, LLC
W201002019999P2	New Bedford	Taylor School at the Sea Lab Marine Science Education Center	Building Complete	Waitlist	Addition / Renovation	DBB	Architectural Consulting Group, LLC	Mount Vernon Group Architects, Inc.	M. O'Connor Contracting, Inc.	WSP USA
201102070005	Newton	A E Angier	Building Complete	Core Program	New Construction	CM@R	NV5 (fka Joslin, Lesser + Associates Inc.)	DiNisco Design, Inc.	W. T. Rich Company Inc.	Fitzmeyer & Tocci Associates, Inc.
201002170505	North Reading	North Reading High School	Building Complete	Core Program	Addition / Renovation	CM@R	PMA Construction Services	Dore & Whittier Architects, Inc.	Gilbane Building Company	Cannon Design
201402100025	Northampton	Leeds	Building Complete	Accelerated Repair	Roof		STV Incorporated	Raymond Design Associates, Inc.	R & H Roofing, LLP	Russo Barr Associates, Inc.
201102130003	Northborough	Lincoln Street	Building Complete	Core Program	Addition / Renovation	DBB	Colliers International	Lamoureux Pagano & Associates, Inc.	Brait Builders Corp.	Fitzmeyer & Tocci Associates, Inc.
200802290305	Peabody	Higgins Middle School	Building Complete	Core Program	New Construction	DBB	Daedalus Projects Inc	DiNisco Design, Inc.	Bacon-Agostini Construction Joint Venture	BVH Integrated Services, P.C.
201402290016	Peabody	John E. McCarthy	Building Complete	Accelerated Repair	Roof, Windows / Doors		Hill International Company	Civitects PC	-	Thompson & Lichtner Co., Inc.
201302420505	Provincetown	Provincetown High	Building Complete	Core Program	Repair	DBB	Atlantic Construction and Management, Inc.	Raymond Design Associates, Inc.	E. Amanti & Sons, Inc.	BVH Integrated Services, P.C.
201502430060	Quincy	Merrymount	Building Complete	Accelerated Repair	Roof		Atlantic Construction and Management, Inc.	Baker/Wohl Architects, Inc.	Gibson Roofs, Inc.	CBI Consulting Inc.



201002480035	Revere	Staff Sergeant James J. Hill School	Building Complete	Core Program	New Construction	DBB	Hill International Company	Drumme Rosane Anderson, Inc.	CTA Construction Co., Inc.	Rist-Frost-Shumway Engineering, P.C.
200902780015	South Hadley	Plains School	Building Complete	Core Program	New Construction	DBB	Arcadis U.S., Inc.	Jones Whitsett Architects, Inc.	Fontaine Brothers, Inc.	Colliers International
200908760605	Southern Worcester Cty VT	Bay Path Regional Vocational Technical High School	Building Complete	Core Program	Addition / Renovation	CM@R	HEERY	Kaestle Boos Associates, Inc.	Consigli Construction Company, Inc.	RDK Engineers
201402850025	Stoughton	Joseph H Gibbons	Building Complete	Accelerated Repair	Roof, Windows / Doors		Atlantic Construction and Management, Inc.	CGKV Architects, Inc.	A&A Window Products, Inc.	Building Enclosure Associates, LLC
200907750305	Wachusett	Mountview Middle School	Building Complete	Core Program	New Construction	DBB	Gary Kaczmarek, Town Employee	Lamoureux Pagano & Associates, Inc.	CTA Construction Co., Inc.	Fitzmeyer & Tocci Associates, Inc.
201403150005	Wayland	Claypit Hill School	Building Complete	Accelerated Repair	Windows / Doors		Pinck & Co., Inc.	CGKV Architects, Inc.	Lockheed Window Corporations	Russo Barr Associates, Inc.
201403170305	Wellesley	Wellesley Middle	Building Complete	Accelerated Repair	Windows / Doors		Arcadis U.S., Inc.	CSS Architects Incorporated	Paul J. Rogan Co., Inc.	Gale Associates, Inc.
201003230505	West Bridgewater	West Bridgewater Middle-Senior High School	Building Complete	Core Program	New Construction	DBB	Colliers International	Flansburgh Associates, Inc.	CTA Construction Co., Inc.	Cannon Design
201303260025	Westford	Col. John Robinson	Building Complete	Accelerated Repair	Windows / Doors	DBB	Colliers International	Gale Associates, Inc.	GTC Construction Management	CBI Consulting Inc.
201303260007	Westford	Day Elementary	Building Complete	Accelerated Repair	Windows / Doors	DBB	Colliers International	Gale Associates, Inc.	J.J. Cardosi, Inc.	CBI Consulting Inc.
200903420505	Wilmington	Wilmington High School	Building Complete	Core Program	New Construction	CM@R	NV5 (fka Joslin, Lesser + Associates Inc.)	Dore & Whittier Architects, Inc.		Symmes, Maini & McKee Associates
200803460505	Winthrop	Winthrop High School	Building Complete	Core Program	New Construction	CM@R	Skanska USA Building, Inc	HMFH Architects, Inc.	Gilbane Building Company	WSP USA
201303480060	Worcester	Columbus Park	Building Complete	Accelerated Repair	Windows / Doors, Boiler	DBB	Architectural Consulting Group, LLC	The S/L/A/M Collaborative	Contractor's Network, Inc.	RDK Engineers Russo Barr Associates, Inc.
201503480115	Worcester	Grafton Street	Building Complete	Accelerated Repair	Windows / Doors, Boiler		Arcadis U.S., Inc.	CSS Architects Incorporated	J.J. Cardosi, Inc.	Rist-Frost-Shumway Engineering, P.C. Russo Barr Associates, Inc.
201303480230	Worcester	Tatnuck	Building Complete	Accelerated Repair	Windows / Doors	DBB	Architectural Consulting Group, LLC	The S/L/A/M Collaborative	GVW, Inc.	Russo Barr Associates, Inc.
201303480225	Worcester	Worcester Arts Magnet Sch	Building Complete	Accelerated Repair	Windows / Doors	DBB	Architectural Consulting Group, LLC	The S/L/A/M Collaborative	GVW, Inc.	Russo Barr Associates, Inc.
201303480420	Worcester	Worcester East Middle	Building Complete	Accelerated Repair	Boiler	DBB	Architectural Consulting Group, LLC	The S/L/A/M Collaborative	Contractor's Network, Inc.	RDK Engineers
200800090003	Andover	Bancroft Elementary School	Closeout	Core Program	New Construction	CM@R	Dore & Whittier Management Partners, Inc.	Symmes Maini & McKee Associates, Inc.	Skanska USA Building, Inc.	Sebesta Blomberg & Associates, Inc.
200908010605	Assabet Valley	Assabet Valley Regional Technical High School	Closeout	Core Program	Repair	DBB	Colliers International	Perkins Eastman/DPC	CTA Construction Co., Inc.	Symmes, Maini & McKee Associates
200800170305	Auburn	Auburn Middle	Closeout	Core Program	New Construction	CM@R	Skanska USA Building, Inc	Lamoureux Pagano & Associates, Inc.	Fontaine Brothers, Inc.	WSP USA
201400170305	Auburn	Auburn Middle	Closeout	Accelerated Repair	Roof, Boiler		Skanska USA Building, Inc	Dietz & Company Architects, Inc.	-	Horizon Engineering Associates, LLP Thompson & Lichtner Co., Inc.
201400170010	Auburn	Bryn Mawr	Closeout	Accelerated Repair	Roof		Skanska USA Building, Inc	Dietz & Company Architects, Inc.	-	Thompson & Lichtner Co., Inc.
200806160505	Ayer-Shirley	Ayer-Shirley Regional Middle/High School	Closeout	Core Program	Addition / Renovation	CM@R	Dore and Whittier Architects, Inc.	Symmes Maini & McKee Associates, Inc.	Consigli Construction Company, Inc.	WSP USA
201400250020	Bellingham	South Elem	Closeout	Accelerated Repair	Roof		Atlantic Construction and Management, Inc.	-	Silktown Roofing	Building Enclosure Associates, LLC
200806200505	Berlin-Boylston	Tahanto Regional High School	Closeout	Core Program	New Construction	DBB	PMA Construction Services	HMFH Architects, Inc.	CTA Construction Co., Inc.	Colliers International
201306220010	Blackstone-Millville	Millville Elem	Closeout	Accelerated Repair	Roof	DBB	Pinck & Co., Inc.	CBI Consulting Inc.	MDM Engineering	Simpson Gumpertz & Heger Inc.
201206250320	Bridgewater-Raynham	Bridgewater Middle School	Closeout	Accelerated Repair	Roof	DBB	Vertex Construction Services	-	-	CBI Consulting Inc.
201206250050	Bridgewater-Raynham	Laliberte Elementary School	Closeout	Accelerated Repair	Roof	DBB	Vertex Construction Services	Raymond Design Associates, Inc.	-	CBI Consulting Inc.



201206250020	Bridgewater-Raynham	Merrill Elementary School	Closeout	Accelerated Repair	Roof	DBB	Vertex Construction Services	Raymond Design Associates, Inc.	-	CBI Consulting Inc.
200906400505	Concord-Carlisle	Concord-Carlisle Regional High School	Closeout	Core Program	New Construction	CM@R	KV Associates, Inc.	OMR Architects, Inc.	Turner Construction Company	Colliers International
200800770010	Douglas	Douglas Elementary	Closeout	Core Program	New Construction - Model School	DBB	HEERY	DiNisco Design, Inc.	CTA Construction Co., Inc.	Consulting Engineering Services, LLC
200800770100G	Douglas	Douglas Intermediate Elementary School	Closeout	Green Repair	Roof, Windows / Doors, Boiler	DBB	HEERY	DiNisco Design, Inc.	CTA Construction Co., Inc.	Consulting Engineering Services, LLC
201000820505	Duxbury	Duxbury High School	Closeout	Core Program	New Construction - Model School	CM@R	KV Associates, Inc.	Mount Vernon Group Architects, Inc.	Dimeo Construction Company	WSP USA
200809130705	Essex Agr Tech	Essex Agricultural and Technical High School	Closeout	Core Program	New Construction	CM@R	PMA Construction Services	Perkins Eastman/DPC	Gilbane Building Company	Turner Facilities Management Solutions
201400960405	Falmouth	Lawrence	Closeout	Accelerated Repair	Windows / Doors		PMA Construction Services	Civitects PC	GVW, Inc.	Gale Associates, Inc.
200901010505	Franklin	Franklin High School	Closeout	Core Program	New Construction - Model School	DBB	Daedalus Projects Inc	Ai3 Architects LLC	Bacon-Agostini Construction Joint Venture	Consulting Engineering Services, LLC
201401030001	Gardner	Elm Street School	Closeout	Accelerated Repair	Windows / Doors, Boiler		Hill International Company	ICON architecture, inc.	Lockheed Window Corporations	Fitzmeyer & Tocci Associates, Inc. Thompson & Lichtner Co., Inc.
200801050505	Georgetown	Georgetown Middle/High School	Closeout	Core Program	Renovation	DBB	Municipal Building Consultants, Inc.	Drumme Rosane Anderson, Inc.	L.D. Russo, Inc.	WSP USA
201108230605	Greater Lawrence RVT	Gr Lawrence Reg Voc Tech	Closeout	Core Program	Repair	DBB	Vertex Construction Services	Richard D. Kimball Company, Inc.	E. Amanti & Sons, Inc.	WSP USA
200908280605	Greater Lowell Voc Tec	Greater Lowell Regional Technical High School	Closeout	Core Program	Addition / Renovation	CM@R	NV5 (fka Joslin, Lesser + Associates Inc.)	Knight, Bagge & Anderson, Inc.	Consigli Construction Company, Inc.	Horizon Engineering Associates, LLP
201008250605	Greater New Bedford	Greater New Bedford Vocational Technical High School	Closeout	Core Program	Addition / Renovation	DBB	Construction Monitoring Services, Inc.	Drumme Rosane Anderson, Inc.	Agostini Construction Co., Inc.	Symmes, Maini & McKee Associates
201401140030	Greenfield	Green River	Closeout	Accelerated Repair	Roof, Windows / Doors, Boiler		Arcadis U.S., Inc.	Baker/Wohl Architects, Inc.	RAC Builders, Inc.	CBI Consulting Inc.
200901140505	Greenfield	Greenfield High School	Closeout	Core Program	New Construction	CM@R	Construction Monitoring Services, Inc.	Dore & Whittier Architects, Inc.	Shawmut Design and Construction	BVH Integrated Services, P.C.
201101280100G	Haverhill	Consentino	Closeout	Green Repair	Windows / Doors	DBB	Vertex Construction Services	CSS Architects Incorporated	New England Builders & Contractors, Inc.	RDK Engineers Russo Barr Associates, Inc.
201101280085G	Haverhill	John G Whittier	Closeout	Green Repair	Windows / Doors	DBB	Vertex Construction Services	CSS Architects Incorporated	New England Builders & Contractors, Inc.	Russo Barr Associates, Inc.
201101280075G	Haverhill	Tilton	Closeout	Green Repair	Roof	DBB	Vertex Construction Services	CSS Architects Incorporated	Titan Roofing, Inc.	Russo Barr Associates, Inc.
201101280080G	Haverhill	Walnut Square	Closeout	Green Repair	Roof, Windows / Doors	DBB	Vertex Construction Services	CSS Architects Incorporated	Titan Roofing, Inc.	RDK Engineers Russo Barr Associates, Inc.
201001310410	Hingham	Hingham Middle School	Closeout	Core Program	New Construction - Model School	DBB	Knight, Bagge & Anderson Inc.	Ai3 Architects LLC	Brait Builders Corp.	Foreman Building Commissioning, LP
200801410410	Hudson	John F. Kennedy Middle School	Closeout	Core Program	New Construction	DBB	PMA Construction Services	OMR Architects, Inc.	Bacon-Agostini Construction Joint Venture	WSP USA
201401410007	Hudson	Mulready Elementary	Closeout	Accelerated Repair	Roof		Atlantic Construction and Management, Inc.	Raymond Design Associates, Inc.	Capeway Roofing Systems, Inc.	CBI Consulting Inc.
201401530030	Leominster	Northwest	Closeout	Accelerated Repair	Roof		Architectural Consulting Group, LLC	Gale Associates, Inc.	Greenwood Industries, Inc.	Building Enclosure Associates, LLC
201401630045	Lynn	E J Harrington	Closeout	Accelerated Repair	Roof		NETCO Construction Project Managers, Inc.	Habeeb & Associates Architects, Inc.	Capeway Roofing Systems, Inc.	CBI Consulting Inc.
200901630305	Lynn	Thurgood Marshall Middle School	Closeout	Core Program	New Construction	CM@R	NV5 (fka Joslin, Lesser + Associates Inc.)	Raymond Design Associates, Inc.	Walsh Brothers, Inc.	Rist-Frost-Shumway Engineering, P.C.
201401630040	Lynn	Wm P Connery	Closeout	Accelerated Repair	Roof		NETCO Construction Project Managers, Inc.	Habeeb & Associates Architects, Inc.	Gibson Roofs, Inc.	CBI Consulting Inc.



201101710505	Marshfield	Marshfield High	Closeout	Core Program	New Construction - Model School	DBB	Compass Project Management, Inc.	Ai3 Architects LLC	Brait Builders Ventures	Sebesta Blomberg & Associates, Inc.
201301760505	Medford	Medford High	Closeout	Accelerated Repair	Windows / Doors, Boiler	DBB	Architectural Consulting Group, LLC	Dietz & Company Architects, Inc.	NB Kenney Company, Inc	Symmes, Maini & McKee Associates
200801810505	Methuen	Methuen High School	Closeout	Core Program	Addition / Renovation	CM@R	KBA/Trident	Finegold Alexander and Associates Inc.	Consigli Construction Company, Inc.	Environmental Health and Engineering
201401840003	Middleton	Fuller Meadow	Closeout	Accelerated Repair	Roof		Hill International Company	CBI Consulting Inc.	-	Building Enclosure Associates, LLC
201107129999	Monomoy	Monomoy Regional High School	Closeout	Core Program	New Construction - Model School	DBB	Skanska USA Building, Inc	Mount Vernon Group Architects, Inc.	Fontaine Brothers, Inc.	Sebesta Blomberg & Associates, Inc.
201102040005	Newburyport	Francis T Bresnahan Elem	Closeout	Core Program	New Construction - Model School	DBB	HEERY	HMFH Architects, Inc.	CTA Construction Co., Inc.	Fitzmeyer & Tocci Associates, Inc.
201002040305	Newburyport	Rupert A. Nock Middle School	Closeout	Core Program	Addition / Renovation	CM@R	HEERY	Miller Dyer Spears Inc.	Gilbane Building Company	Fitzmeyer & Tocci Associates, Inc.
200802080005	Norfolk	Freeman-Kennedy Elementary School	Closeout	Core Program	New Construction	DBB	NV5 (fka Joslin, Lesser + Associates Inc.)	Flansburgh Associates, Inc.	Fontaine Brothers, Inc.	WSP USA
200802090305	North Adams	Silvio O Conte Middle School	Closeout	Core Program	Addition / Renovation	DBB	Colliers International	Jones Whitsett Architects, Inc.	PDS Engineering and Construction, Inc.	Rist-Frost-Shumway Engineering, P.C.
201402100029	Northampton	R. K. Finn Ryan Road	Closeout	Accelerated Repair	Roof		STV Incorporated	Raymond Design Associates, Inc.	R & H Roofing, LLP	Russo Barr Associates, Inc.
200802260405	Oxford	Oxford Middle School	Closeout	Core Program	Repair	DBB	Diversified Project Management	CGKV Architects, Inc.	J.J. Cardosi, Inc.	Cannon Design
201302310010	Pembroke	Hobomock Elementary	Closeout	Accelerated Repair	Roof	DBB	Pinck & Co., Inc.	The S/L/A/M Collaborative	Greenwood Industries, Inc.	CBI Consulting Inc.
201302310015	Pembroke	North Pembroke Elem	Closeout	Accelerated Repair	Roof	DBB	Pinck & Co., Inc.	The S/L/A/M Collaborative	Paul J. Rogan Co., Inc.	CBI Consulting Inc.
201302310305	Pembroke	Pembroke Community Middle School	Closeout	Accelerated Repair	Roof	DBB	Pinck & Co., Inc.	The S/L/A/M Collaborative	Paul J. Rogan Co., Inc.	CBI Consulting Inc.
201302310505	Pembroke	Pembroke High School	Closeout	Accelerated Repair	Roof	DBB	Pinck & Co., Inc.	The S/L/A/M Collaborative	Greenwood Industries, Inc.	CBI Consulting Inc.
201302430060	Quincy	Merrymount	Closeout	Accelerated Repair	Windows / Doors	DBB	Skanska USA Building, Inc	Habeeb & Associates Architects, Inc.	Alpha Contracting Associates, Inc.	Simpson Gumpertz & Heger Inc.
201302430510	Quincy	North Quincy High	Closeout	Accelerated Repair	Windows / Doors	DBB	Skanska USA Building, Inc	Habeeb & Associates Architects, Inc.	GVW, Inc.	Simpson Gumpertz & Heger Inc.
201302430110	Quincy	Wollaston School	Closeout	Accelerated Repair	Windows / Doors	DBB	Skanska USA Building, Inc	Habeeb & Associates Architects, Inc.	Northeast Energy Control Systems	Simpson Gumpertz & Heger Inc.
200902580305G	Salem	Collins Middle School	Closeout	Green Repair	Roof, Windows / Doors, Boiler, Building Envelope	CM@R	KV Associates, Inc.	Reinhardt Associates, Inc.	Gilbane Building Company	Rist-Frost-Shumway Engineering, P.C.
201002580050G	Salem	Saltonstall School	Closeout	Green Repair	Roof, Windows / Doors, Boiler, Building Envelope	CM@R	KV Associates, Inc.	Reinhardt Associates, Inc.	Gilbane Building Company	Rist-Frost-Shumway Engineering, P.C.
200802710305	Shrewsbury	Sherwood Middle School	Closeout	Core Program	New Construction	CM@R	PMA Construction Services	Lamoureux Pagano & Associates, Inc.	Gilbane Building Company	RDK Engineers
200811119999	Somerset-Berkley	Somerset-Berkley High	Closeout	Core Program	New Construction - Model School	DBB	Skanska USA Building, Inc	Ai3 Architects LLC	Bacon-Agostini Construction Joint Venture	Horizon Engineering Associates, LLP
200902740111E	Somerville	East Somerville Community School at Cummings	Closeout	Core Program	Renovation	CM@R	PMA Construction Services	Maguire Group Inc.	Gilbane Building Company	Foreman Building Commissioning, LP
201408730605	South Shore Reg Voc Tech	So Shore Voc Tech High	Closeout	Accelerated Repair	Boiler		exPERTcon, Inc.	Richard D. Kimball Company, Inc.	-	Consulting Engineering Services, LLC
201407650505	Southern Berkshire	Mt Everett Regional	Closeout	Accelerated Repair	Roof, Boiler		NETCO Construction Project Managers, Inc.	Dietz & Company Architects, Inc.	Titan Roofing, Inc.	Colliers International
201107660305	Southwick-Tolland	Powder Mill	Closeout	Core Program	Repair	DBB	Colliers International	JCJ Architecture, PC	PDS Engineering and Construction, Inc.	BVH Integrated Services, P.C.
201107660505	Southwick-Tolland	Southwick-Tolland Regional High	Closeout	Core Program	Addition / Renovation	DBB	Colliers International	JCJ Architecture, PC	Fontaine Brothers, Inc.	BVH Integrated Services, P.C.
200807660010	Southwick-Tolland	Woodland Elementary School	Closeout	Core Program	Addition / Renovation	DBB	Colliers International	JCJ Architecture, PC	PDS Engineering and Construction, Inc.	BVH Integrated Services, P.C.
201102810030E	Springfield	Elias Brookings	Closeout	Core Program	New Construction	CM@R	Arcadis U.S., Inc.	Drummeay Rosane Anderson, Inc.	Morganti/Aquadro & Cerruti	BVH Integrated Services, P.C.



201202810500	Springfield	Springfield Central High	Closeout	Science Lab Initiative	Addition / Renovation	CM@R	Leftfield, LLC	DiNisco Design, Inc.	Morganti/Aquadro & Cerruti	Horizon Engineering Associates, LLP
200802950505	Tewksbury	Tewksbury Memorial High School	Closeout	Core Program	New Construction - Model School	DBB	HEERY	Symmes Maini & McKee Associates, Inc.	CTA Ventures	Sebesta Blomberg & Associates, Inc.
201403010505	Tyngsborough	Tyngsborough High School	Closeout	Accelerated Repair	Roof, Boiler		Municipal Building Consultants, Inc.	CSS Architects Incorporated	Greenwood Industries, Inc.	Colliers International
201003050310	Wakefield	Galvin Middle School	Closeout	Core Program	New Construction	CM@R	NV5 (fka Joslin, Lesser + Associates Inc.)	Tappe Associates, Inc.	Bond Brothers, Inc.	B2Q Associates, Inc.
200903160015	Webster	Park Avenue Elementary School	Closeout	Core Program	New Construction	DBB	Hill International Company	Dore & Whittier Architects, Inc.	CTA Construction Co., Inc.	Cannon Design
200803170505	Wellesley	Wellesley Senior School	Closeout	Core Program	New Construction	CM@R	-	Symmes Maini & McKee Associates, Inc.	-	Rist-Frost-Shumway Engineering, P.C.
201103220005G	West Boylston	Major Edwards Elementary	Closeout	Green Repair	Windows / Doors	DBB	URS Corporation	Reinhardt Associates, Inc.	-	Cannon Design
201503230005	West Bridgewater	Spring Street School	Closeout	Accelerated Repair	Roof		Potomac Capital Advisors	Tai Soo Kim Partners, LLC	Capeway Roofing Systems, Inc.	Thompson & Lichtner Co., Inc.
200903320505	West Springfield	West Springfield High School	Closeout	Core Program	New Construction - Model School	DBB	Colliers International	Symmes Maini & McKee Associates, Inc.	Fontaine Brothers, Inc.	Turner Facilities Management Solutions
201403480055	Worcester	Clark St Community	Closeout	Accelerated Repair	Windows / Doors		Architectural Consulting Group, LLC	ICON architecture, inc.	J.J. Cardosi, Inc.	Russo Barr Associates, Inc.
201403480100	Worcester	Goddard Sch/Science Tech	Closeout	Accelerated Repair	Windows / Doors		Architectural Consulting Group, LLC	ICON architecture, inc.	Lambrian Construction Corp.	Russo Barr Associates, Inc.
201403480240	Worcester	Union Hill School	Closeout	Accelerated Repair	Windows / Doors		Architectural Consulting Group, LLC	ICON architecture, inc.	J.J. Cardosi, Inc.	Russo Barr Associates, Inc.
201403480260	Worcester	West Tatnuck	Closeout	Accelerated Repair	Windows / Doors		Architectural Consulting Group, LLC	ICON architecture, inc.	J.J. Cardosi, Inc.	Russo Barr Associates, Inc.
200800010405	Abington	Frolio Middle School	Construction	Core Program	New Construction	DBB	Knight, Bagge & Anderson Inc.	Ai3 Architects LLC	Brait Builders Corp.	Horizon Engineering Associates, LLP
201300300305	Beverly	Briscoe Middle	Construction	Core Program	New Construction	CM@R	HEERY	Ai3 Architects LLC	Bacon-Agostini Construction Joint Venture	Bard, Rao + Athanas Consulting Engineers, LLC
201508050605	Blackstone Valley Reg	Blackstone Valley	Construction	Accelerated Repair	Roof		Watermark Environmental, Inc.	Russo Barr Associates, Inc.	Silktown Roofing	Gale Associates, Inc.
201000350074	Boston	Henry Dearborn Middle School	Construction	Core Program	New Construction	CM@R	Daedalus Projects Inc	Jonathan Levi Architects LLC	Gilbane Building Company	Symmes, Maini & McKee Associates
201400440421	Brockton	Ashfield Middle School	Construction	Accelerated Repair	Roof, Boiler		Architectural Consulting Group, LLC	Tighe & Bond, Inc.	-	Rist-Frost-Shumway Engineering, P.C. Simpson Gumpertz & Heger Inc.
201400440010	Brockton	Brookfield	Construction	Accelerated Repair	Roof		Architectural Consulting Group, LLC	Tighe & Bond, Inc.	-	Simpson Gumpertz & Heger Inc.
201400440035	Brockton	Gilmore	Construction	Accelerated Repair	Roof, Boiler		Architectural Consulting Group, LLC	Tighe & Bond, Inc.	-	Rist-Frost-Shumway Engineering, P.C. Simpson Gumpertz & Heger Inc.
201100460015	Brookline	Edward Devotion	Construction	Core Program	Addition / Renovation	CM@R	Anthony Guigli, Town Employee	HMFH Architects, Inc.	Shawmut Design and Construction	Consulting Engineering Services, LLC
201300520015	Carver	Carver Elementary School	Construction	Core Program	New Construction		PMA Construction Services	HMFH Architects, Inc.	-	Symmes, Maini & McKee Associates
200800570050	Chelsea	Clark Avenue School	Construction	Core Program	New Construction	CM@R	Pinck & Co., Inc.	HMFH Architects, Inc.	W. T. Rich Company Inc.	Cannon Design
201500610010	Chicopee	Belcher	Construction	Accelerated Repair	Roof		NV5 (fka Joslin, Lesser + Associates Inc.)	Kaestle Boos Associates, Inc.	J.D. Rivet & Co., Inc.	Building Enclosure Associates, LLC
201500610310	Chicopee	Fairview Middle	Construction	Accelerated Repair	Roof		NV5 (fka Joslin, Lesser + Associates Inc.)	Kaestle Boos Associates, Inc.	J.D. Rivet & Co., Inc.	Building Enclosure Associates, LLC
201500940305	Fairhaven	Hastings Middle	Construction	Accelerated Repair	Roof		Potomac Capital Advisors	CGKV Architects, Inc.	Capeway Roofing Systems, Inc.	Gale Associates, Inc.
201406740050	Gill-Montague	Sheffield Elementary	Construction	Accelerated Repair	Windows / Doors, Boiler		NETCO Construction Project Managers, Inc.	The S/L/A/M Collaborative	Gardner Construction & Industrial Services	CBI Consulting Inc.
201501140010	Greenfield	Federal	Construction	Accelerated Repair	Roof, Windows / Doors, Boiler		-	-	-	Colliers International



200801330505	Holbrook	Holbrook Junior-Senior High School	Construction	Core Program	New Construction	CM@R	Symmes Maini & McKee Associates, Inc.	Flansburgh Associates, Inc.	Consigli Construction Company, Inc.	Consulting Engineering Services, LLC
201401370045	Holyoke	E N White Elem	Construction	Accelerated Repair	Boiler		STV Incorporated	Richard D. Kimball Company, Inc.	Adams Plumbing and Heating, Inc.	BVH Integrated Services, P.C.
201401370025	Holyoke	Morgan Elem	Construction	Accelerated Repair	Boiler		STV Incorporated	Richard D. Kimball Company, Inc.	Adams Plumbing and Heating, Inc.	BVH Integrated Services, P.C.
201301390005	Hopkinton	Center	Construction	Core Program	New Construction	CM@R	Compass Project Management, Inc.	Drummeys Rosane Anderson, Inc.	Colantonio, Inc.	RDK Engineers
201501510505	Leicester	Leicester High	Construction	Accelerated Repair	Roof		Hill International Company	Gale Associates, Inc.	Greenwood Industries, Inc.	Russo Barr Associates, Inc.
201501530025	Leominster	Johnny Appleseed East Street Elementary School	Construction	Accelerated Repair	Roof, Windows / Doors		NETCO Construction Project Managers, Inc.	Habeeb & Associates Architects, Inc.	Greenwood Industries, Inc.	Russo Barr Associates, Inc.
201501610010	Ludlow	Herbert Clark Hoover Memorial Early Childhood Center	Construction	Accelerated Repair	Roof, Boiler		STV Incorporated	Johnson Roberts Associates, Inc.	Westfield Construction Co., Inc.	Colliers International Simpson Gumpertz & Heger Inc.
201401780017	Melrose	Herbert Clark Hoover Memorial Early Childhood Center	Construction	Accelerated Repair	Windows / Doors		Colliers International	ICON architecture, inc.	GVW, Inc.	Russo Barr Associates, Inc.
201501820011	Middleborough	Herbert Clark Hoover Memorial Early Childhood Center	Construction	Accelerated Repair	Roof		Architectural Consulting Group, LLC	Knight, Bagge & Anderson, Inc.	MDM Engineering	Russo Barr Associates, Inc.
201502010063	New Bedford	Alfred J Gomes	Construction	Accelerated Repair	Windows / Doors		Vertex Construction Services	-	-	CBI Consulting Inc.
201502010123	New Bedford	Casimir Pulaski	Construction	Accelerated Repair	Windows / Doors, Boiler		Vertex Construction Services	-	-	CBI Consulting Inc. WSP USA
201502010078	New Bedford	Hayden/McFadden	Construction	Accelerated Repair	Windows / Doors, Boiler		Vertex Construction Services	-	-	CBI Consulting Inc. WSP USA
200902010070	New Bedford	John Hannigan	Construction	Core Program	New Construction	DBB	Daedalus Projects Inc	Turowski2 Architecture, Inc.	H.V. Collins Co., Inc.	WSP USA
201502010045	New Bedford	Sgt Wm H Carney Acad	Construction	Accelerated Repair	Windows / Doors		Vertex Construction Services	-	-	CBI Consulting Inc. WSP USA
201107350505	North Middlesex	North Middlesex Reg	Construction	Core Program	New Construction	DBB	HEERY	Symmes Maini & McKee Associates, Inc.	CTA Construction Co., Inc.	Horizon Engineering Associates, LLP
201502170003	North Reading	E Ethel Little School	Construction	Accelerated Repair	Roof		Compass Project Management, Inc.	HAKS Engineers, P.C.	Stanley Roofing Company, Inc.	Thompson & Lichtner Co., Inc.
201402240005	Orleans	Orleans Elementary	Construction	Accelerated Repair	Windows / Doors		Architectural Consulting Group, LLC	Tighe & Bond, Inc.	-	Gale Associates, Inc.
201002360510	Pittsfield	Taconic High School	Construction	Core Program	New Construction	CM@R	Skanska USA Building, Inc	Drummeys Rosane Anderson, Inc.	Gilbane Building Company	Colliers International
201202390515	Plymouth	Plymouth South High	Construction	Core Program	New Construction	DBB	Ted Gentry Associates, Inc	Ai3 Architects LLC	Bacon-Agostini Construction Joint Venture	Rist-Frost-Shumway Engineering, P.C.
201502430020	Quincy	Beechwood Knoll Elem	Construction	Accelerated Repair	Roof, Windows / Doors		Atlantic Construction and Management, Inc.	Baker/Wohl Architects, Inc.	-	CBI Consulting Inc.
201402440018	Randolph	J F Kennedy Elem	Construction	Accelerated Repair	Windows / Doors		STV Incorporated	Taylor & Burns, Inc.	Modern Glass & Aluminum, Inc.	Gale Associates, Inc.
201402440505	Randolph	Randolph High	Construction	Accelerated Repair	Windows / Doors		STV Incorporated	Taylor & Burns, Inc.	A&A Window Products, Inc.	Gale Associates, Inc.
201502480056	Revere	Garfield Elementary School	Construction	Accelerated Repair	Roof		Leftfield, LLC	Turowski2 Architecture, Inc.	Greenwood Industries, Inc.	Thompson & Lichtner Co., Inc.
201202640305	Scituate	Gates Intermediate School	Construction	Core Program	New Construction	DBB	Daedalus Projects Inc	Dore & Whittier Architects, Inc.	Bacon-Agostini Construction Joint Venture	WSP USA
201402810328	Springfield	John F Kennedy Middle	Construction	Accelerated Repair	Windows / Doors		Arcadis U.S., Inc.	Gale Associates, Inc.	Lambrian Construction Corp.	Building Enclosure Associates, LLC
201402810110	Springfield	Kensington Avenue	Construction	Accelerated Repair	Windows / Doors		Arcadis U.S., Inc.	Gale Associates, Inc.	Alpha Contracting Associates, Inc.	Building Enclosure Associates, LLC
201502930007	Taunton	Edmund Hatch Bennett	Construction	Accelerated Repair	Roof, Windows / Doors		Arcadis U.S., Inc.	CSS Architects Incorporated	TRAC Builders, Inc.	Gale Associates, Inc.
201502930042	Taunton	Joseph H Martin	Construction	Accelerated Repair	Roof, Windows / Doors		Arcadis U.S., Inc.	CSS Architects Incorporated	TRAC Builders, Inc.	Gale Associates, Inc.
201503100003	Wareham	John W. Decas Elementary School	Construction	Accelerated Repair	Roof, Boiler		Colliers International	ICON architecture, inc.	Nadeau Corporation	Bard, Rao + Athanas Consulting Engineers, LLC Gale Associates, Inc.



200903210305	Westborough	Gibbons Middle School	Construction	Core Program	Repair	CM@R	HEERY	Habeeb & Associates Architects, Inc.	Gilbane Building Company	BVH Integrated Services, P.C.
200903250020	Westfield	Abner Gibbs Elementary School	Construction	Core Program	New Construction - Model School	DBB	Skanska USA Building, Inc	Jones Whitsett Architects, Inc.	Fontaine Brothers, Inc.	Horizon Engineering Associates, LLP
201003440505	Winchester	Winchester High School	Construction	Core Program	Addition / Renovation	CM@R	Skanska USA Building, Inc	Symmes Maini & McKee Associates, Inc.	Consigli Construction Company, Inc.	RDK Engineers
201203470060	Woburn	Wyman	Construction	Core Program	New Construction		Municipal Building Consultants, Inc.	DiNisco Design, Inc.	E.T. and L. Corp.	Fitzmeyer & Tocci Associates, Inc.
201503480090	Worcester	Flagg Street	Construction	Accelerated Repair	Windows / Doors		Arcadis U.S., Inc.	CSS Architects Incorporated	J.J. Cardosi, Inc.	Russo Barr Associates, Inc.
201503480177	Worcester	Francis J McGrath Elem	Construction	Accelerated Repair	Windows / Doors		Arcadis U.S., Inc.	CSS Architects Incorporated	J.J. Cardosi, Inc.	Russo Barr Associates, Inc.
201503480140	Worcester	Jacob Hiatt Magnet	Construction	Accelerated Repair	Windows / Doors		Arcadis U.S., Inc.	CSS Architects Incorporated	J.J. Cardosi, Inc.	Russo Barr Associates, Inc.
201203480200	Worcester	Nelson Place	Construction	Core Program	New Construction	CM@R	Tishman Construction Corporation of MA	Lamoureux Pagano & Associates, Inc.	Fontaine Brothers, Inc.	Bard, Rao + Athanas Consulting Engineers, LLC
201300310505	Billerica	Billerica Memorial High School	Design Development	Core Program	New Construction	CM@R	Leftfield, LLC	Perkins+Will	Shawmut Design and Construction	RDK Engineers
201500350052	Boston	Charles Sumner	Design Development	Accelerated Repair	Windows / Doors		P3 Inc.	Dietz & Company Architects, Inc.	-	Simpson Gumpertz & Heger Inc.
201500350020	Boston	Curley K-8 School	Design Development	Accelerated Repair	Windows / Doors		P3 Inc.	Dietz & Company Architects, Inc.	-	Simpson Gumpertz & Heger Inc.
201500350072	Boston	David A Ellis	Design Development	Accelerated Repair	Windows / Doors		P3 Inc.	Dietz & Company Architects, Inc.	-	Simpson Gumpertz & Heger Inc.
201500350080	Boston	Donald Mckay	Design Development	Accelerated Repair	Windows / Doors		P3 Inc.	Dietz & Company Architects, Inc.	-	Simpson Gumpertz & Heger Inc.
201500350651	Boston	Dorchester Academy	Design Development	Accelerated Repair	Windows / Doors		P3 Inc.	Dietz & Company Architects, Inc.	-	Simpson Gumpertz & Heger Inc.
201500350415	Boston	Grover Cleveland	Design Development	Accelerated Repair	Windows / Doors		P3 Inc.	Dietz & Company Architects, Inc.	-	Simpson Gumpertz & Heger Inc.
201500350380	Boston	Young Achievers	Design Development	Accelerated Repair	Windows / Doors		P3 Inc.	Dietz & Company Architects, Inc.	-	Simpson Gumpertz & Heger Inc.
201400360010	Bourne	James F Peebles Elem	Design Development	Core Program	New Construction		Symmes Maini & McKee Associates, Inc.	Flansburgh Associates, Inc.	-	BVH Integrated Services, P.C.
201600520405	Carver	Carver Middle/High School	Design Development	Accelerated Repair	Roof, Windows / Doors, Boiler		Leftfield, LLC	Johnson Roberts Associates, Inc.	-	Symmes, Maini & McKee Associates
201200730005	Dedham	Early Childhood Center	Design Development	Core Program	New Construction	DBB	Construction Monitoring Services, Inc.	Knight, Bagge & Anderson, Inc.	-	Symmes, Maini & McKee Associates
201201110010	Granby	West St	Design Development	Core Program	Addition / Renovation		Colliers International	Jones Whitsett Architects, Inc.	-	Rist-Frost-Shumway Engineering, P.C.
201301220015	Hanover	Sylvester	Design Development	Core Program	Addition / Renovation		P3 Inc.	Mount Vernon Group Architects, Inc.	-	Horizon Engineering Associates, LLP
200908300605	Minuteman Voc Tech	Minuteman Regional High School	Design Development	Core Program	New Construction		Skanska USA Building, Inc	Kaestle Boos Associates, Inc.	-	Bard, Rao + Athanas Consulting Engineers, LLC
201307150505	Mount Greylock	Mt Greylock Reg High	Design Development	Core Program	Addition / Renovation	CM@R	Dore & Whittier Management Partners, Inc.	Perkins Eastman/DPC	Turner Construction Company	BVH Integrated Services, P.C.
200807200020	Narragansett	Templeton Center School	Design Development	Core Program			Colliers International	Symmes Maini & McKee Associates, Inc.	-	Fitzmeyer & Tocci Associates, Inc.
201301990035	Needham	Hillside Elementary	Design Development	Core Program	New Construction		Steven H. Popper, Town Employee	Dore & Whittier Architects, Inc.	-	Rist-Frost-Shumway Engineering, P.C.
201302070025	Newton	Cabot	Design Development	Core Program		CM@R	NV5 (fka Joslin, Lesser + Associates Inc.)	DiNisco Design, Inc.	W. T. Rich Company Inc.	Colliers International
201302430320	Quincy	Reay E Sterling Middle	Design Development	Core Program	New Construction		Potomac Capital Advisors	Ai3 Architects LLC	-	Symmes, Maini & McKee Associates
201502810035	Springfield	Daniel B Brunton	Design Development	Accelerated Repair	Windows / Doors		Skanska USA Building, Inc	CBI Consulting Inc.	-	Building Enclosure Associates, LLC
201502810155	Springfield	Mary M Walsh	Design Development	Accelerated Repair	Windows / Doors		Skanska USA Building, Inc	CBI Consulting Inc.	-	Building Enclosure Associates, LLC
201502810550	Springfield	Springfield Public Day High School	Design Development	Accelerated Repair	Windows / Doors		Skanska USA Building, Inc	CBI Consulting Inc.	-	Building Enclosure Associates, LLC



201502810350	Springfield	STEM Middle Academy	Design Development	Accelerated Repair	Roof		Skanska USA Building, Inc	CBI Consulting Inc.	-	Building Enclosure Associates, LLC
201302850505	Stoughton	Stoughton High	Design Development	Core Program	New Construction	CM@R	Compass Project Management, Inc.	Drumme Rosane Anderson, Inc.	Consigli Construction Company, Inc.	Fitzemeyer & Tocci Associates, Inc.
201502850020	Stoughton	West Elementary	Design Development	Accelerated Repair	Windows / Doors		Compass Project Management, Inc.	CBI Consulting Inc.	-	Building Enclosure Associates, LLC
201503140305	Watertown	Watertown Middle	Design Development	Accelerated Repair	Windows / Doors		exPERTcon, Inc.	Gale Associates, Inc.	-	Thompson & Lichtner Co., Inc.
201503500003	Wrentham	Delaney	Design Development	Accelerated Repair	Roof		P3 Inc.	Turowski2 Architecture, Inc.	-	Gale Associates, Inc.
201600380013	Boxford	Spofford Pond	Designer Selection	Accelerated Repair	Roof, Windows / Doors		NETCO Construction Project Managers, Inc.	Russo Barr Associates, Inc.	-	-
201601180005	Halifax	Halifax Elementary	Designer Selection	Accelerated Repair	Roof, Windows / Doors		Vertex Construction Services	-	-	-
201501980305	Natick	J F Kennedy Middle Sch	Designer Selection	Core Program			-	-	-	-
201500070005	Amesbury	Amesbury Elementary	Eligibility Period	Core Program			-	-	-	-
201500100505	Arlington	Arlington High	Eligibility Period	Core Program			-	-	-	-
201506350505	Central Berkshire	Wahconah Regional High	Eligibility Period	Core Program			-	-	-	-
201501000305	Framingham	Fuller Middle	Eligibility Period	Core Program			-	-	-	-
201501680015	Marblehead	Elbridge Gerry	Eligibility Period	Core Program			-	-	-	-
201502710005	Shrewsbury	Beal School	Eligibility Period	Core Program			-	-	-	-
201502810025	Springfield	Brightwood	Eligibility Period	Core Program			-	-	-	-
201502950025	Tewksbury	Louise Davy Trahan	Eligibility Period	Core Program			-	-	-	-
201503100017	Wareham	Minot Forest	Eligibility Period	Core Program			-	-	-	-
201503320007	West Springfield	Philip G Coburn	Eligibility Period				-	-	-	-
201400160505	Attleboro	Attleboro High	Feasibility Study	Core Program			Skanska USA Building, Inc	Kaestle Boos Associates, Inc.	-	-
201508060605	Blue Hills Voc	Blue Hills Reg Voc Tech	Feasibility Study	Core Program	Addition / Renovation		Dore & Whittier Management Partners, Inc.	Drumme Rosane Anderson, Inc.	-	-
201300350546	Boston	Boston Arts Academy	Feasibility Study	Core Program			PMA Construction Services	Perkins Eastman/DPC	-	-
201300400305	Braintree	East Middle School	Feasibility Study	Core Program			Hill International Company	Miller Dyer Spears Inc.	-	-
201409100705	Bristol County Agr	Bristol County Agr High	Feasibility Study	Core Program			Colliers International	HMFH Architects, Inc.	-	-
201408150605	Cape Cod Region Voc Tech	Cape Cod Region Voc Tech	Feasibility Study	Core Program			Colliers International	Drumme Rosane Anderson, Inc.	-	-
201400630010	Clarksburg	Clarksburg Elementary	Feasibility Study	Core Program			Potomac Capital Advisors	Jones Whitsett Architects, Inc.	-	-
201400860010	Easthampton	Maple	Feasibility Study	Core Program			Colliers International	Caolo & Bieniek Associates, Inc.	-	-
201400930028	Everett	George Keverian School	Feasibility Study	Core Program			Symmes Maini & McKee Associates, Inc.	Mount Vernon Group Architects, Inc.	-	-
201400950505	Fall River	B M C Durfee High	Feasibility Study	Core Program			Lefffield, LLC	-	-	-
201501250005	Harvard	Harvard Elementary	Feasibility Study	Core Program			NV5 (fka Joslin, Lesser + Associates Inc.)	-	-	-
201401440015	Ipswich	Winthrop	Feasibility Study	Core Program			PMA Construction Services	Perkins Eastman/DPC	-	-
201501550035	Lexington	Maria Hastings	Feasibility Study	Core Program			Dore & Whittier Management Partners, Inc.	DiNisco Design, Inc.	-	-
201401600505	Lowell	Lowell High	Feasibility Study	Core Program			Skanska USA Building, Inc	Perkins Eastman/DPC	-	-
201501700025	Marlborough	Richer	Feasibility Study	Core Program			Daedalus Projects Inc	-	-	-
201401820505	Middleborough	Middleborough High	Feasibility Study	Core Program			Compass Project Management, Inc.	Drumme Rosane Anderson, Inc.	-	-
201402620505	Saugus	Saugus High	Feasibility Study	Core Program			PMA Construction Services	HMFH Architects, Inc.	-	-



201402930015	Taunton	Mulcahey Elementary School	Feasibility Study	Core Program			CGA Project Management	Dore & Whittier Architects, Inc.	-	-
201502960005	Tisbury	Tisbury Elementary	Feasibility Study	Core Program			Daedalus Projects Inc	-	-	-
201507730025	Triton	Pine Grove	Feasibility Study	Core Program	Addition / Renovation		Pinck & Co., Inc.	Dore & Whittier Architects, Inc.	-	-
201403080505	Waltham	Waltham High School	Feasibility Study	Core Program			NV5 (fka Joslin, Lesser + Associates Inc.)	Symmés Maini & McKee Associates, Inc.	-	-
201403310305	Westport	Westport Middle	Feasibility Study	Core Program			Daedalus Projects Inc	Jonathan Levi Architects LLC	-	-
201403480520	Worcester	South High Community	Feasibility Study	Core Program			HEERY	Lamoureux Pagano & Associates, Inc.	-	-
201206220505	Blackstone-Millville	Blackstone Millville RHS	Final Audit Approved	Accelerated Repair	Roof	DBB	Arcadis U.S., Inc.	DiMarinisi & Wolfe Architects Urban Designers	-	Gale Associates, Inc.
201200500012	Canton	Lt Peter M Hansen	Final Audit Approved	Accelerated Repair	Windows / Doors	DBB	Vertex Construction Services	CSS Architects Incorporated	Lockheed Window Corporations	Simpson Gumpertz & Heger Inc.
201200500305	Canton	Wm H Galvin Middle	Final Audit Approved	Accelerated Repair	Windows / Doors	DBB	Vertex Construction Services	CSS Architects Incorporated	Lockheed Window Corporations	Simpson Gumpertz & Heger Inc.
200800710505	Danvers	Danvers High School	Final Audit Approved	Core Program	Addition / Renovation	DBB	Construction Monitoring Services, Inc.	DiNisco Design, Inc.	Bacon Construction Co, Inc.	Turner Facilities Management Solutions
201400720030	Dartmouth	George H Potter	Final Audit Approved	Accelerated Repair	Roof		Pinck & Co., Inc.	Russo Barr Associates, Inc.	Greenwood Industries, Inc.	Gale Associates, Inc.
201306500305	Dighton-Rehoboth	Dighton Middle School	Final Audit Approved	Accelerated Repair	Roof	DBB	Arcadis U.S., Inc.	Dietz & Company Architects, Inc.	MDM Engineering	Gale Associates, Inc.
200900830505	East Bridgewater	East Bridgewater High School	Final Audit Approved	Core Program	New Construction - Model School	DBB	Hill International Company	Ai3 Architects LLC	Fontaine Brothers, Inc.	Foreman Building Commissioning, LP
201300880020	Easton	Moreau Hall	Final Audit Approved	Accelerated Repair	Roof	DBB	Skanska USA Building, Inc	Baker/Wohl Architects, Inc.	Capeway Roofing Systems, Inc.	Gale Associates, Inc.
201306750015	Hamilton-Wenham	Winthrop School	Final Audit Approved	Accelerated Repair	Windows / Doors, Boiler	DBB	NETCO Construction Project Managers, Inc.	Habeeb & Associates Architects, Inc.	E. Amanti & Sons, Inc.	CBI Consulting Inc. Colliers International
201406800030	Hampden-Wilbraham	Soule Road	Final Audit Approved	Accelerated Repair	Windows / Doors		exPERTcon, Inc.	The S/L/A/M Collaborative	-	Russo Barr Associates, Inc.
201401770013	Medway	John D Mc Govern Elem	Final Audit Approved	Accelerated Repair	Windows / Doors		Arcadis U.S., Inc.	CBI Consulting Inc.	-	Russo Barr Associates, Inc.
200807250015	Nashoba	Pompositicut Elementary School	Final Audit Approved	Core Program	Addition / Renovation	DBB	Construction Monitoring Services, Inc.	Symmés Maini & McKee Associates, Inc.	P.J. Stella Construction Corp.	Colliers International
200909150705	Norfolk County Agriculture	Norfolk County Agr	Final Audit Approved	Core Program	Addition / Renovation	DBB	Compass Project Management, Inc.	Turowski2 Architecture, Inc.	Brait Builders Corp.	Rist-Frost-Shumway Engineering, P.C.
201402120015	North Attleborough	Roosevelt Avenue	Final Audit Approved	Accelerated Repair	Boiler		Pinck & Co., Inc.	Consulting Engineering Services, LLC	Falite Brothers Inc.	Bard, Rao + Athanas Consulting Engineers, LLC
200902180505	Norton	Norton High School	Final Audit Approved	Core Program	Addition / Renovation	CM@R	Pinck & Co., Inc.	JCJ Architecture, PC	W. T. Rich Company Inc.	Rist-Frost-Shumway Engineering, P.C.
201402200010	Norwood	Cornelius M Callahan	Final Audit Approved	Accelerated Repair	Boiler		PMA Construction Services	Consulting Engineering Services, LLC	George T. Wilkinson, Inc.	Symmés, Maini & McKee Associates
201308600605	Pathfinder Voc Tech	Pathfinder Voc Tech	Final Audit Approved	Accelerated Repair	Roof	DBB	exPERTcon, Inc.	Baker/Wohl Architects, Inc.	Allied Restoration Corporation	Building Enclosure Associates, LLC
201402430075	Quincy	Francis W Parker	Final Audit Approved	Accelerated Repair	Windows / Doors		PMA Construction Services	Russo Barr Associates, Inc.	Lockheed Window Corporations	Simpson Gumpertz & Heger Inc.
201402430035	Quincy	Lincoln-Hancock Comm Sch	Final Audit Approved	Accelerated Repair	Windows / Doors		PMA Construction Services	Russo Barr Associates, Inc.	Lockheed Window Corporations	Simpson Gumpertz & Heger Inc.
201002620305	Saugus	Belmonte Middle School	Final Audit Approved	Core Program	Repair	CM@R	Skanska USA Building, Inc	Fletcher Thompson Architecture Engineering, LLC	Consigli Construction Company, Inc.	Consulting Engineering Services, LLC
201302810310	Springfield	Chestnut Accelerated Middle School	Final Audit Approved	Accelerated Repair	Roof	DBB	Atlantic Construction and Management, Inc.	CBI Consulting Inc.	J.D. Rivet & Co., Inc.	Building Enclosure Associates, LLC
201302810530	Springfield	High School/Science-Tech	Final Audit Approved	Accelerated Repair	Roof	DBB	Atlantic Construction and Management, Inc.	CBI Consulting Inc.	Kronenberger & Sons Restoration, INC.	Building Enclosure Associates, LLC
201302810060	Springfield	Margaret C Ells	Final Audit Approved	Accelerated Repair	Roof	DBB	Atlantic Construction and Management, Inc.	CBI Consulting Inc.	Allied Restoration Corporation	Building Enclosure Associates, LLC
201302810355	Springfield	South End Middle School	Final Audit Approved	Accelerated Repair	Roof	DBB	Atlantic Construction and Management, Inc.	CBI Consulting Inc.	Titan Roofing, Inc.	Building Enclosure Associates, LLC



201302810550	Springfield	Springfield Public Day High School	Final Audit Approved	Accelerated Repair	Roof	DBB	Atlantic Construction and Management, Inc.	CBI Consulting Inc.	-	Building Enclosure Associates, LLC
200902840405	Stoneham	Stoneham Middle School	Final Audit Approved	Core Program	Addition / Renovation	CM@R	NV5 (fka Joslin, Lesser + Associates Inc.)	Tappe Associates, Inc.	Shawmut Design and Construction	RDK Engineers
201302850010	Stoughton	Helen Hansen Elementary	Final Audit Approved	Accelerated Repair	Windows / Doors	DBB	Hill International Company	Russo Barr Associates, Inc.	Lockheed Window Corporations	Building Enclosure Associates, LLC
201302850014	Stoughton	Joseph R Dawe Jr Elem	Final Audit Approved	Accelerated Repair	Windows / Doors	DBB	Hill International Company	Russo Barr Associates, Inc.	Lockheed Window Corporations	Building Enclosure Associates, LLC
200802900305	Sutton	Sutton Middle School	Final Audit Approved	Core Program	Addition / Renovation	DBB	Colliers International	Flansburgh Associates, Inc.	Brait Builders Corp.	RDK Engineers
201408780605	Tri County	Tri County Reg Voc Tech	Final Audit Approved	Accelerated Repair	Boiler		Colliers International	Shekar & Associates, Inc.	-	Fitzemeyer & Tocci Associates, Inc.
201303180005	Wellfleet	Wellfleet Elementary	Final Audit Approved	Accelerated Repair	Roof	DBB	Architectural Consulting Group, LLC	CSS Architects Incorporated	DDC Construction Inc.	Russo Barr Associates, Inc.
200903300012	Weston	Field Elementary School	Final Audit Approved	Core Program	New Construction	DBB	Compass Project Management, Inc.	Jonathan Levi Architects LLC	Colantonio, Inc.	Foreman Building Commissioning, LP
200803400005	Williamsburg	Anne T. Dunphy School	Final Audit Approved	Core Program	Addition / Renovation	DBB	Arcadis U.S., Inc.	Drumme Rosane Anderson, Inc.	Enfield Builders, Inc.	B2Q Associates, Inc.
201600050303	Agawam	Agawam Middle School	OPM Selection	Accelerated Repair	Boiler		STV Incorporated	Hesnor Engineering Company	-	-
201500260505	Belmont	Belmont High	OPM Selection	Core Program			-	-	-	-
201600350560	Boston	Boston Latin	OPM Selection	Accelerated Repair	Boiler		-	-	-	-
201600350146	Boston	James Condon Elem	OPM Selection	Accelerated Repair	Boiler		-	-	-	-
201600350179	Boston	John W McCormack	OPM Selection	Accelerated Repair	Roof		-	-	-	-
201600350268	Boston	Paul A Dever	OPM Selection	Accelerated Repair	Roof		-	-	-	-
201600350360	Boston	William Ellery Channing	OPM Selection	Accelerated Repair	Boiler		-	-	-	-
201600500012	Canton	Lt Peter M Hansen	OPM Selection	Accelerated Repair	Roof		Watermark Environmental, Inc.	Kaestle Boos Associates, Inc.	-	-
201500710032	Danvers	Ivan G Smith	OPM Selection	Core Program			-	-	-	-
201506450305	Dennis-Yarmouth	Mattacheese Middle Sch	OPM Selection	Core Program			-	-	-	-
201500990015	Foxborough	Mabelle M Burrell	OPM Selection	Core Program			-	-	-	-
201601070505	Gloucester	Gloucester High	OPM Selection	Accelerated Repair	Roof		P3 Inc.	Baker/Wohl Architects, Inc.	-	-
201201370015	Holyoke	Lt Elmer J McMahon Elem	OPM Selection	Core Program			-	-	-	-
201501610020	Ludlow	Chapin Street Elementary School	OPM Selection	Core Program			-	-	-	-
201506980010	Manchester Essex Regional	Manchester Memorial Elementary	OPM Selection	Core Program			-	-	-	-
201601710310	Marshfield	Furnace Brook Middle	OPM Selection	Accelerated Repair	Roof		Potomac Capital Advisors	Civitects PC	-	-
201607350030	North Middlesex	Hawthorne Brook	OPM Selection	Accelerated Repair			-	-	-	-
201607350020	North Middlesex	Squannacook	OPM Selection	Accelerated Repair			-	-	-	-
201607350035	North Middlesex	Varnum Brook	OPM Selection	Accelerated Repair			-	-	-	-
201502140001	Northbridge	W Edward Balmer	OPM Selection	Core Program			-	-	-	-
201507450505	Pentucket	Pentucket Reg Sr High	OPM Selection	Core Program			-	-	-	-
201607780505	Quaboag Regional	Quaboag Regional High	OPM Selection	Accelerated Repair	Boiler		NETCO Construction Project Managers, Inc.	-	-	-
201607780005	Quaboag Regional	Warren Elementary	OPM Selection	Accelerated Repair	Windows / Doors		NETCO Construction Project Managers, Inc.	-	-	-
201602660015	Sharon	Heights Elementary	OPM Selection	Accelerated Repair	Roof		Potomac Capital Advisors	Knight, Bagge & Anderson, Inc.	-	-
201602980005	Topsfield	Proctor Elementary	OPM Selection	Accelerated Repair	Roof		Compass Project Management, Inc.	The S/L/A/M Collaborative	-	-
201602980010	Topsfield	Steward Elementary	OPM Selection	Accelerated Repair	Roof		Compass Project Management, Inc.	The S/L/A/M Collaborative	-	-
201603150020	Wayland	Loker School	OPM Selection	Accelerated Repair	Windows / Doors		Colliers International	CBI Consulting Inc.	-	-
201503360020	Weymouth	Maria Weston Chapman Middle School	OPM Selection	Core Program			-	-	-	-



201600170015	Auburn	Pakachoag	Schematic Design	Accelerated Repair	Roof	Hill International Company	CGKV Architects, Inc.	-	-
201000350565	Boston	Quincy Upper School	Schematic Design	Core Program		Skanska USA Building, Inc	HMFH Architects, Inc.	-	-
201600490090	Cambridge	Fletcher/Maynard Academy	Schematic Design	Accelerated Repair	Roof	Arcadis U.S., Inc.	-	-	-
201600610015	Chicopee	Bowe	Schematic Design	Accelerated Repair	Windows / Doors	-	-	-	-
201600610050	Chicopee	Selser	Schematic Design	Accelerated Repair	Roof	Compass Project Management, Inc.	Turowski2 Architecture, Inc.	-	-
201600720050	Dartmouth	Dartmouth Middle High School Learning Center	Schematic Design	Accelerated Repair	Roof	Atlantic Construction and Management, Inc.	CSS Architects Incorporated	-	-
201601490536	Lawrence	High School Learning Center	Schematic Design	Accelerated Repair	Boiler	Pinck & Co., Inc.	Shekar & Associates, Inc.	-	-
201401630420	Lynn	Pickering Middle	Schematic Design	Core Program		Leftfield, LLC	Raymond Design Associates, Inc.	-	-
201601720035	Mashpee	Quashnet School	Schematic Design	Accelerated Repair	Windows / Doors	exPERTcon, Inc.	Raymond Design Associates, Inc.	-	-
201401870005	Millis	Clyde F Brown	Schematic Design	Core Program	New Construction	Compass Project Management, Inc.	Tappe Associates, Inc.	-	-
201602150015	North Brookfield	North Brookfield Elem	Schematic Design	Accelerated Repair	Roof	Skanska USA Building, Inc	Dietz & Company Architects, Inc.	-	-
201602100005	Northampton	Bridge Street	Schematic Design	Accelerated Repair	Roof	Colliers International	The S/L/A/M Collaborative	-	-
201602100025	Northampton	Leeds	Schematic Design	Accelerated Repair	Roof	Colliers International	The S/L/A/M Collaborative	-	-
201602430040	Quincy	Atherton Hough	Schematic Design	Accelerated Repair	Boiler	-	-	-	-
201602430020	Quincy	Beechwood Knoll Elem	Schematic Design	Accelerated Repair	Boiler	-	-	-	-
201602430060	Quincy	Merrymount	Schematic Design	Accelerated Repair	Boiler	-	-	-	-
201602430110	Quincy	Wollaston School	Schematic Design	Accelerated Repair	Boiler	-	-	-	-
201602480057	Revere	Garfield Middle School	Schematic Design	Accelerated Repair	Boiler	-	-	-	-
201302740505	Somerville	Somerville High	Schematic Design	Core Program	Addition / Renovation	PMA Construction Services	Symmes Maini & McKee Associates, Inc.	-	-
201602740120	Somerville	Winter Hill Community	Schematic Design	Accelerated Repair	Roof, Windows / Doors	Municipal Building Consultants, Inc.	Tai Soo Kim Partners, LLC	-	-
201602810095	Springfield	Alfred G Zanetti	Schematic Design	Accelerated Repair	Windows / Doors	Leftfield, LLC	Gale Associates, Inc.	-	-
201602810015	Springfield	Balliet Elementary School	Schematic Design	Accelerated Repair	Roof	Leftfield, LLC	Gale Associates, Inc.	-	-
201602810360	Springfield	Balliet Middle School	Schematic Design	Accelerated Repair	Windows / Doors	Leftfield, LLC	Gale Associates, Inc.	-	-
201602810110	Springfield	Kensington Avenue	Schematic Design	Accelerated Repair	Roof	Leftfield, LLC	Gale Associates, Inc.	-	-
201602810330	Springfield	M Marcus Kiley Middle	Schematic Design	Accelerated Repair	Windows / Doors	Leftfield, LLC	Gale Associates, Inc.	-	-
201602810140	Springfield	Mary M Lynch	Schematic Design	Accelerated Repair	Roof	Leftfield, LLC	Gale Associates, Inc.	-	-
201602920006	Swansea	Elizabeth S Brown	Schematic Design	Accelerated Repair	Windows / Doors	Skanska USA Building, Inc	Tighe & Bond, Inc.	-	-
201603480020	Worcester	Belmont Street Community	Schematic Design	Accelerated Repair	Windows / Doors	-	-	-	-
201603480050	Worcester	Chandler Elem Community	Schematic Design	Accelerated Repair	Windows / Doors, Boiler	-	-	-	-
201603481004	Worcester	Gerald Creamer Center	Schematic Design	Accelerated Repair	Windows / Doors, Boiler	-	-	-	-
201603480026	Worcester	Wawecus Road School	Schematic Design	Accelerated Repair	Windows / Doors	-	-	-	-

APPENDIX B
2016 & 2017 ESTIMATED BID DATES

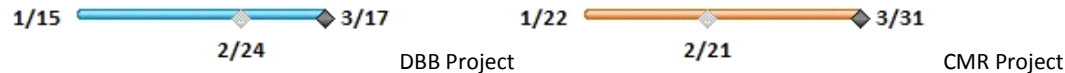
2016 ESTIMATED BID DATES

Note bid dates are Estimates ONLY. Please contact Districts for exact information.

Total Project Budget denotes total District costs and does not denote the basis of the MSBA Total Facilities Grant.

District	Enrollment	Project Budget	Start	Finish	Construct Budget	Notes	Nov '15	Dec '15	Jan '16	Feb '16	Mar '16	Apr '16	May '16	Jun '16	Jul '16	Aug '16	Sep '16	Oct '16	Nov '16	Dec '16	Jan '17	Feb '17	Mar '17	Apr '17						
							Boston	355	\$ 73.5	Mon 9/28/15	Fri 7/8/16	\$ 60.2	GMP issued : July	<p>Boston - Henry Dearborn MS Bid dates: 11/10 (gray diamond), 7/8 (black diamond)</p>																
Worcester	600	\$ 58.2	Wed 12/16/15	Tue 5/10/16	\$ 46.5	GMP issued: May	<p>Worcester - Nelson Place School Bid dates: 12/16 (gray diamond), 2/10 (gray diamond), 5/10 (black diamond)</p>																							
Provincetown	n/a	\$ 7.3	Wed 1/13/16	Wed 2/17/16	\$ 5.7	NTP issued: February	<p>Provincetown - Provincetown Schools K-8 Bid dates: 1/13 (gray diamond), 2/5 (gray diamond), 2/17 (black diamond)</p>																							
Westborough	550	\$ 26.8	Fri 2/26/16	Fri 6/10/16	\$ 21.6	GMP issued: June	<p>Westborough - Sarah W. Gibbons MS Bid dates: 2/26 (gray diamond), 4/5 (gray diamond), 6/10 (black diamond)</p>																							
New Bedford	400	\$ 35.6	Wed 5/25/16	Thu 7/14/16	\$ 35.1	NTP issued: July	<p>New Bedford - John Hannigan Elementary School Bid dates: 5/25 (gray diamond), 6/23 (gray diamond), 7/14 (black diamond)</p>																							
Pittsfield	920	\$ 116.1	Thu 6/16/16	Thu 9/1/16	\$ 97.7	GMP issued: September	<p>Pittsfield - Taconic High School Bid dates: 6/16 (gray diamond), 7/26 (gray diamond), 9/1 (black diamond)</p>																							
Brookline	830	\$ 113.4	Tue 8/16/16	Fri 11/4/16	\$ 92.2	GMP issued: December	<p>Brookline - Edward Devotion School Bid dates: 8/16 (gray diamond), 10/5 (gray diamond), 11/4 (black diamond)</p>																							
Carver	750	\$ 51.9	Fri 8/19/16	Mon 9/19/16	\$ 39.4	NTP issued: September	<p>Carver Elementary School Bid dates: 8/19 (gray diamond), 9/12 (gray diamond), 9/19 (black diamond)</p>																							
Beverly	1395	\$ 106.8	Fri 9/30/16	Wed 11/30/16	\$ 90.1	GMP targeted: January 2017	<p>Beverly - Briscoe Middle School Bid dates: 9/30 (gray diamond), 11/2 (gray diamond), 11/30 (black diamond)</p>																							
Hopkinton	395	\$ 43.8	Wed 10/19/16	Thu 12/8/16	\$ 35.1	GMP issued in January 2017.	<p>Hopkinton - Center Elementary School Bid dates: 10/19 (gray diamond), 11/18 (gray diamond), 12/8 (black diamond)</p>																							
Woburn	410	\$ 31.8	Wed 11/2/16	Fri 12/16/16	\$ 26.2	NTP Issued: January 2017	<p>Woburn - Wyman Elementary School Bid dates: 11/2 (gray diamond), 11/28 (gray diamond), 12/16 (black diamond)</p>																							
Total	6605	\$ 665.2			\$ 549.8																									
							* Narragansett RSD: Potentially Bid in 2017																							

Note: Budget values are in millions.
 The project start date represents the Filed-Sub bid solicitation date, gray diamond Filed-Sub bid date, and the black diamond GC Bids / GMP Execution.



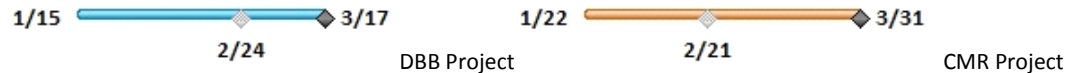
2017 ESTIMATED BID DATES

Note bid dates are Estimates ONLY. Please contact Districts for exact information.

Total Project Budget denotes total District costs and does not denote the basis of the MSBA Total Facilities Grant.

District	Enrollment	Project Budget	Start	Finish	Construct Budget	Notes	Timeline		
							Jan '17	Jan '18	Jan '19
Granby	430	\$ 34.2	Mon 11/7/16	Thu 1/26/17	\$ 26.5	NTP targeted: January 2017	1/12	1/26	
Mount Greylock	535	\$ 64.7	Thu 12/22/16	Wed 4/5/17	\$ 52.3	GMP targeted: April 2017	3/15	4/5	
Quincy	430	\$ 58.3	Wed 5/3/17	Wed 6/14/17	\$ 46.6	GMP targeted: June 2017	5/3	6/14	
Hanover	560	\$ 32.4	Tue 5/9/17	Tue 6/20/17	\$ 26.1	NTP targeted: July 2017	5/9	6/20	
Stoughton	1065	\$ 123.5	Wed 5/24/17	Wed 7/26/17	\$ 97.2	GMP targeted: July 2017	5/24	7/26	
Billerica	1610	\$ 175.9	Mon 6/5/17	Fri 12/8/17	\$ 140.7	GMP targeted: December 2017	6/5	12/8	
Dedham	200	\$ 33.2	Fri 7/21/17	Fri 9/8/17	\$ 26.2	NTP targeted: September 2017	7/21	9/8	
Needham	430	\$ 65.9	Fri 8/11/17	Mon 9/11/17	\$ 45.5	NTP targeted: September 2017	8/11	9/11	
Minuteman Reg. School District	628	\$ 144.9	Wed 10/25/17	Mon 2/5/18	\$ 119.2	GMP targeted: February 2018	10/25	2/5	
Total	5888	\$ 733.1			\$ 580.3				
							* Narragansett Potentially Bidding in 2017		

Note: Budget values are in millions.
 The project start date represents the Filed-Sub bid solicitation date, gray diamond Filed-Sub bid date, and the black diamond GC Bids / GMP Execution.



APPENDIX C
CONSTRUCTION STATUS REPORT

**Projects in Construction
MSBA Grant Basis and Maximum Grant Amount
Data Reported as of January 25, 2017**

Core Program and Waitlist Totals			\$1,815,071,645														*Includes Alternates	\$1,164,042,899
Project	Grade	Contractor	Total Construction Cost*	Projected Enrollment	PFA or Bid Data	Proposed Sq.Ft.	Construction Cost/Sq.Ft.	Building Cost	Building Cost/Sq.Ft.	Procurement Type	Construction Start Date	Substantial Completion	Schedule Variance (days)	Physical Progress	Change Orders	Change Orders %	Construction Status	Est Max Total Facilities Grant
CAPITAL PIPELINE PROJECTS IN CONSTRUCTION																		
Core Program Totals			\$1,806,106,645															\$1,153,911,093
Abington Frolio Jr Hs	Junior High School	Brait Builders Corp.	\$78,791,215	1,115	Bid	235,370	\$335	\$61,468,040	\$261	Design/Bid/Build	03-Dec-15	1-Jun-17	0	70%	\$788,918	1.024%	Exterior masonry and window installation work are complete. Finishes being installed throughout the building. Furniture, furnishings and equipment to be delivered May 2017.	\$48,528,486
Athol-Royalston Riverbend	Elementary School	Fontaine Brothers, Inc.	\$31,594,000	545	Bid	95,726	\$330	\$24,859,000	\$260	Design/Bid/Build	08-Dec-14	14-Jun-16	0	99%	\$1,898,547	6.009%	Final site work to be completed. Commissioning and punch list work are ongoing.	\$26,011,620
Chicopee Chicopee Academy	Middle School	Fontaine Brothers, Inc.	\$31,487,000	825	Bid	176,425	\$178	\$25,639,000	\$145	Design/Bid/Build	01-Jul-14	11-Aug-15	0	99%	\$2,063,322	6.553%	Punch list work is complete and two items remain on the Commissioning log.	\$28,813,458
Dracut Dracut Senior High	High School	CTA Construction Co., Inc.	\$45,900,000	1,160	Bid	226,844	\$202	\$38,377,028	\$169	Design/Bid/Build	27-Aug-12	29-Aug-14	0	99%	\$2,651,850	5.778%	Punch list work is ongoing. Contractor performing change order work related to roof top dunnage.	\$34,137,202
Georgetown Penn Brook	Elementary School	Brait Builders Corp.	\$32,875,975	770	Bid	98,000	\$335	\$26,976,145	\$275	Design/Bid/Build	26-Sep-13	20-May-15	0	99%	\$3,922,227	11.930%	Punch list work ongoing.	\$18,864,538
New Bedford John Hannigan	Elementary School	H.V. Collins Co., Inc.	\$29,792,732	400	PFA	74,056	\$402	\$20,536,621	\$277	Design/Bid/Build	11-Aug-16	<u>27-Aug-17</u>	9	18%	\$44,600	0.150%	As a result of delays with steel manufacturing and delivery, this project is now 9 days behind schedule. Steel is ongoing. Concrete foundation pouring is complete. Site work includes retaining wall work and utility prep by Eversource. Light-gauge metal framing started January 2017 and is ongoing.	\$22,428,240
North Middlesex North Middlesex Reg	High School	CTA Construction Co., Inc.	\$64,995,000	870	Bid	180,530	\$360	\$49,909,000	\$276	Design/Bid/Build	25-May-15	14-Jul-17	0	65%	\$253,850	0.391%	Roof insulation and membrane installation is complete. Air vapor barrier and the exterior building veneer system installations are ongoing. Finishes being installed throughout the building. FFE to be delivered June 2017.	\$38,471,881
Northborough Lincoln Street	Elementary School	Brait Builders Corp.	\$18,450,000	270	Bid	52,920	\$349	\$14,514,966	\$274	Design/Bid/Build	27-Apr-15	31-Aug-16	0	99%	\$180,834	0.980%	Items remaining include minor punch list items, final commissioning and close out.	\$9,925,570
Peabody J Henry Higgins Middle	Middle School	Bacon-Agostini Construction Joint Venture	\$70,679,700	1,340	Bid	227,314	\$311	\$52,186,177	\$230	Design/Bid/Build	10-Mar-14	05-Aug-16	0	92%	\$733,877	1.038%	Landscaping of the Phase I area is complete. Final grading and planting is scheduled for Spring 2017.	\$38,652,137
Plymouth Plymouth South High	High School	Bacon-Agostini Construction Joint Venture	\$90,266,700	1,005	Bid	248,081	\$364	\$66,744,766	\$269	Design/Bid/Build	06-Jul-15	05-May-17	0	68%	\$389,868	0.459%	Work continues in areas 1 - 7 on all floors. Cement board panels, pvc soffits, caulking and windows are nearing completion and building is fully enclosed for winter. Interior framing, mechanical, electrical and plumbing roughing and windows/curtain walls continue in areas 5, 6 and 7. Sheetrock, taping, painting and ceiling grid installation are ongoing. The site contractor completed granite curbing and some sidewalks and will de-mobilize during the winter.	\$45,733,725
Provincetown Provincetown High	High School	E. Amanti & Sons, Inc.	\$5,709,882	111	Bid	62,645	\$91	\$3,671,169	\$59	Design/Bid/Build	14-Mar-16	7-Dec-16	0	99%	\$512,519	8.976%	All Change Order work, including the refinishing of the auditorium wood floors and the installation of auditorium seats is now complete. Contractor is currently working to complete the punch-list.	\$3,258,431
Revere Staff Sergeant James J. Hill School	Elementary School	CTA Construction Co., Inc.	\$31,975,839	690	Bid	103,650	\$308	\$27,439,789	\$265	Design/Bid/Build	25-Mar-14	17-Aug-15	0	99%	\$1,110,455	3.473%	The contractor/City is in the process of completing work to close out the project including punch list items.	\$28,099,048
Scituate Gates Intermediate School	Middle School	Bacon-Agostini Construction Joint Venture	\$52,596,801	710	Bid	164,803	\$319	\$42,947,412	\$261	Design/Bid/Build	08-Dec-15	26-Jul-17	0	70%	\$1,039,006	1.975%	High school auditorium: Lobby curtain-wall is being installed. Exterior metal panels started, interior finishes and mechanical, electrical and plumbing are in progress and stage equipment is being installed. Middle school: Brick veneer is in progress at the gym and dining areas, mechanical electrical and plumbing overhead and in-wall is in progress in the same areas. Roofing is in progress over the gym. Metal panels and Interior finishes are in progress in all academic areas. Site contractor has demobilized until the Spring.	\$20,436,585
South Hadley Plains Elementary	Elementary School	Fontaine Brothers, Inc.	\$21,391,144	270	Bid	63,377	\$338	\$17,380,907	\$274	Design/Bid/Build	08-May-14	04-Sep-15	0	100%	\$1,676,719	7.838%	Parking lots and ball fields are complete. Landscaping work ongoing and reseeding of drainage swales is anticipated in Spring.	\$13,676,432
Wachusett Mountview Middle	Middle School	CTA Construction Co., Inc.	\$43,122,257	800	Bid	126,200	\$342	\$28,959,805	\$229	Design/Bid/Build	21-May-14	11-Apr-16	0	98%	\$883,302	2.048%	Site work following demolition of the old middle school has been completed. Punch list items, commissioning items, and warranty work remains for completion.	\$24,279,591
West Bridgewater West Bridgewater Jr-Sr	Junior High School	CTA Construction Co., Inc.	\$46,267,914	625	Bid	141,250	\$328	\$35,071,188	\$248	Design/Bid/Build	01-Oct-13	09-Jul-15	0	99%	\$307,797	0.665%	Work continues on the punch list as well as completion of sound, security and fire alarm systems. Commissioning of the building is ongoing.	\$26,385,058
Westfield Abner Gibbs	Elementary School	Fontaine Brothers, Inc.	\$25,578,000	600	Bid	95,573	\$268	\$21,444,000	\$224	Design/Bid/Build	24-Aug-12	01-Jun-16	0	2%	\$0	0.000%	Work stoppage due to preliminary injunction based upon project site status as Article 97 "Protected Land". Preliminary Injunction vacated but city awaiting National Park Service approval for use of site. The General Contractor has demobilized from the site. The project team is working on closing out the General Contractor's contract.	\$20,004,463
Beverly Briscoe Middle	Middle School	Bacon-Agostini Construction Joint Venture	\$90,129,432	1,395	PFA	231,509	\$289	\$62,790,920	\$271	CM-at-Risk	24-Dec-15	30-Mar-18	0	13%	\$0	0.000%	Early package work is ongoing. Site work continues and installation of site utilities are being completed. The concrete sub-contractor is placing pile caps and foundations in zones 3 and 4. Structural steel work is ongoing in zone 3.	\$48,018,498
Boston Dearborn	Middle School	Gilbane Building Company	\$60,245,740	600	PFA	128,304	\$470	\$36,655,002	\$286	CM-at-Risk	08-Sep-15	27-Dec-17	0	40%	\$0	0.000%	Exterior sheathing is now complete and temporary windows have been installed, along with temporary heat. Curtain wall frames are being installed, along with window wraps. Interior framing continues on all floors. Mechanical, electrical and plumbing rough-ins are ongoing.	\$36,615,390
Brookline Edward Devotion	Elementary School	Shawmut Design and Construction	\$92,237,854	1,010	PFA	227,087	\$406	\$57,910,095	\$255	CM-at-Risk	11-Jul-16	31-Jul-18	0	9%	\$0	0.000%	Site preparation continues including removal of the underground storage tank and oil/gas separator. Footing and foundation work are ongoing as well as underpinning. Structural steel erection has commenced.	\$25,910,852
Chelsea Clark Avenue School	Middle School	W. T. Rich Company Inc.	\$46,046,367	670	Bid	115,235	\$400	\$29,311,076	\$254	CM-at-Risk	23-Feb-15	29-Jun-18	0	60%	\$262,405	0.570%	Phase one of the new school is now occupied as of January 2017 with punch list items ongoing. Installation of piles for the new Phase 2 building are underway. Preparations for hazardous materials abatement have commenced inside the Phase 2 building.	\$36,163,680
Gloucester West Parish	Elementary School	W. T. Rich Company Inc.	\$29,995,466	355	Bid	65,679	\$457	\$18,591,872	\$283	CM-at-Risk	07-Jul-14	15-Jul-16	0	99%	\$373,240	1.244%	Minor punch list and administrative activities are ongoing.	\$14,673,132
Haverhill Caleb Dustin Hunking	Middle School	Shawmut Design and Construction	\$49,544,769	1,005	Bid	147,996	\$335	\$35,181,852	\$238	CM-at-Risk	20-Apr-15	16-Dec-16	0	95%	\$1,580,603	3.190%	The upper school portion of the new building is in use. The lower school portion of the building will be occupied in September. Tile delivery is late for the water feature in the lower school lobby but the work is scheduled to be completed during the February break. All punch list work is forecast to be completed in April, 2017. Demolition and abatement of the existing building is ongoing. Maintenance building construction continues.	\$39,518,874
Holbrook Holbrook Jr Sr High	High School	Consigli Construction Company, Inc.	\$78,135,643	1,095	Bid	217,353	\$359	\$52,399,810	\$241	CM-at-Risk	24-Jun-15	05-Jun-17	0	68%	\$896,065	1.154%	Exterior façade work is ongoing. Sidewalk concrete pours have been temporarily delayed due to weather conditions. Interior finish work continues including painting, classroom tile work, casework and ceiling tile installation.	\$53,832,918
Hopkinton Center	Elementary School	Colantonio, Inc.	\$35,140,982	395	PFA	83,256	\$422	\$21,864,684	\$263	CM-at-Risk	03-Oct-16	31-Jul-18	0	12%	\$0	0.000%	All major site excavation and stockpiling is completed. Most of the water, sewer and drainage lines have been installed around the site including the two storm water recharge fields and the gravel wetlands. The gas pipe installation is in progress. The foundations are proceeding.	\$13,763,197
Lunenburg Lunenburg High	Junior High School	Shawmut Design and Construction	\$57,994,017	820	Bid	169,018	\$343	\$41,982,415	\$248	CM-at-Risk	15-Aug-14	30-Jun-16	0	98%	\$1,188,726	2.050%	Final site work to be completed. Commissioning and punch list work ongoing.	\$34,122,826
Milford Woodland	Elementary School	Shawmut Design and Construction	\$48,375,101	985	Bid	132,539	\$365	\$34,861,130	\$263	CM-at-Risk	01-Apr-15	28-Jul-16	0	94%	\$1,122,372	2.320%	Testing and balancing of building systems are ongoing. Site work and AstroTurf installations are ongoing. Punch list and additional owner requested changes/work are in progress.	\$27,418,234
Newton A E Angier	Elementary School	W. T. Rich Company Inc.	\$30,158,875	465	Bid	74,960	\$402	\$19,837,027	\$265	CM-at-Risk	22-Aug-14	04-Jan-16	0	99%	\$245,287	0.936%	The punch list has been completed. Contractor is working on OPM manuals and warranty items. One item related to asphalt patch will be completed in Spring.	\$10,687,077
North Reading North Reading High	Junior High School	Gilbane Building Company	\$101,328,353	1,370	Bid	267,939	\$378	\$66,726,592	\$249	CM-at-Risk	01-May-12	21-Aug-15	0	99%	\$3,521,877	3.476%	Punch list items including site work, warranty items, and commissioning closeout items are underway and remain for completion. Drain line corrective work and final landscaping will be scheduled for Spring 2017.	\$47,071,882
Pittsfield Taconic High	High School	Gilbane Building Company	\$97,757,373	920	PFA	246,520	\$397	\$56,984,184	\$231	CM-at-Risk	21-Mar-16	29-Jun-18	0	21%	\$1,020,291	1.044%	Structural steel erection and precast concrete columns, roof tee sections, and walls are nearing completion. The structural steel building sections have been temporarily enclosed with heat to allow the construction trades to progress through the winter. Concrete placement for the elevated slabs is progressing, along with underground utilities for the slab on grade.	\$72,491,194

**Projects in Construction
MSBA Grant Basis and Maximum Grant Amount
Data Reported as of January 25, 2017**

Core Program and Waitlist Totals			\$1,815,071,645														*Includes Alternates	\$1,164,042,899
Project	Grade	Contractor	Total Construction Cost*	Projected Enrollment	PFA or Bid Data	Proposed Sq.Ft.	Construction Cost/Sq.Ft.	Building Cost	Building Cost/Sq.Ft.	Procurement Type	Construction Start Date	Substantial Completion	Schedule Variance (days)	Physical Progress	Change Orders	Change Orders %	Construction Status	Est Max Total Facilities Grant
CAPITAL PIPELINE PROJECTS IN CONSTRUCTION																		
Core Program Totals			\$1,806,106,645															\$1,153,911,093
Southern Worcester Cty VT Bay Path Reg Voc Tech H S	Vocational / Technical	Consigli Construction Company, Inc.	\$57,024,455	1,110	Bid	249,521	\$229	\$41,468,049	\$166	CM-at-Risk	02-Aug-13	01-Sep-15	0	99%	\$4,402,328	7.772%	The Contractor and Site Sub-Contractor will return in Spring 2017 to restore some landscaped areas.	\$44,420,530
Westborough Sarah W Gibbons Middle	Middle School	Gilbane Building Company	\$21,595,600	550	PFA	110,000	\$196	\$12,693,993	\$115	CM-at-Risk	22-Jun-16	16-Aug-17	0	50%	\$420,374	1.947%	This is a 7 phase project. Phase 2 has been completed and turned over to the school. Demolition and abatement of Phase 3 work for 10 classrooms is currently ongoing. Work includes doors, windows, ceiling tiles, mechanical, electrical and fire protection. New rough-in work is ongoing as part of the Phase 3 work. In addition to Phase 3 work, the auditorium stage, stage equipment and seating work will commence early Spring 2017.	\$11,131,080
Wilmington Wilmington High	High School	Gilbane Building Company	\$67,558,835	960	Bid	192,443	\$351	\$48,060,314	\$250	CM-at-Risk	30-Apr-13	12-Feb-15	0	99%	\$2,881,004	4.458%	The project team is working to resolve an issue with the gym floor.	\$35,674,893
Winchester Winchester High School	High School	Consigli Construction Company, Inc.	\$101,404,577	1,370	Bid	278,925	\$364	\$70,862,283	\$254	CM-at-Risk	23-Apr-14	31-Aug-17	0	90%	\$3,856,322	3.803%	This is a 3 phase addition/renovation project. Phase 2 which includes the gym as well as science and art areas, has been completed and students are using the completed spaces. A majority of the classes are now being held in modulars due to phase 3 work which includes structural steel, light gauge framing, HVAC and electrical runs. Roof and building enclosure are projected to be complete by early Spring 2017.	\$42,187,027
Winthrop Winthrop Sr High	Junior High School	Gilbane Building Company	\$63,542,179	970	Bid	187,917	\$338	\$49,608,610	\$264	CM-at-Risk	01-Jul-14	30-Jun-16	0	100%	\$1,669,396	2.627%	The new building opened for the Fall 2016 school year. Miscellaneous punch list items are remaining to be completed.	\$38,996,995
Worcester Nelson Place	Elementary School	Fontaine Brothers, Inc.	\$46,546,300	600	PFA	111,256	\$418	\$29,503,564	\$265	CM-at-Risk	01-Jul-15	01-Jun-17	0	55%	\$0	0.000%	Exterior glazing nears completion. Metal panel backup system is ongoing. Interior drywall nears completion in the remaining areas - Gym and Cafetorium, acoustical ceiling grid, painting, casework, and MEP are in progress. Flooring installation is about to begin. The exterior site improvements are on hold until the Spring.	\$33,717,513
Carver Carver Elementary School	Elementary School	CTA Construction Co., Inc.	\$39,443,454	750	PFA	112,350	\$369	\$26,491,831	\$236	Undetermined	27-Sep-16	22-Jun-18	0	8%	0	0.000%	Foundation work continues in building A, beginning work on interior grade beams, interior footings to follow. Water and temporary power lines are currently being coordinated.	\$25,814,682
Woburn Wyman	Elementary School	E.T. and L. Corp.	\$27,017,841	410	PFA	70,701	\$382	\$18,251,786	\$258	Undetermined	10-Jan-17	8-Jan-18	0	4%	\$15,708	0.000%	General Contractor has mobilized at the site where early site package work has been completed and foundation work to start.	\$13,974,154
Waitlist Totals			\$8,965,000				\$139		\$108									\$10,131,806
New Bedford Taylor School at the Sea Lab Marine Science Education Center	N/A	M. O'Connor Contracting, Inc.	\$8,965,000	284	Bid	64,533	\$139	\$6,967,355	\$108	Design/Bid/Build	28-Nov-15	31-Aug-16	0	99%	\$407,526	4.546%	Work continues on punch list items as well as training school staff on equipment and systems.	\$10,131,806