

Massachusetts School Building Authority

# CAPITAL PLANNING PROJECT OVERVIEW REPORT

June 7, 2017

# TABLE OF CONTENTS

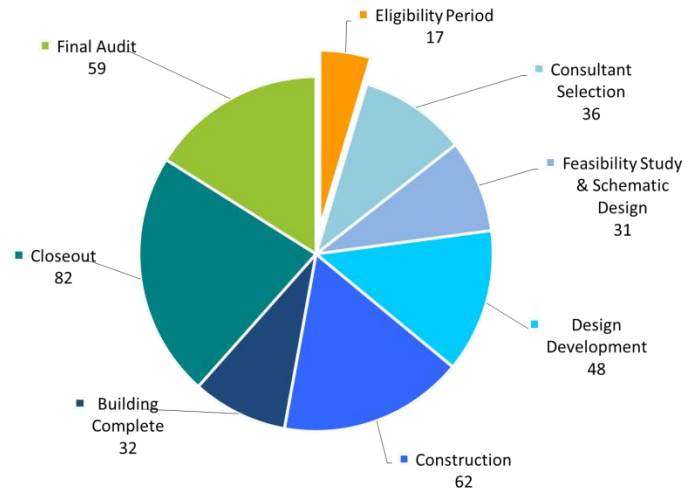
<b>Capital Pipeline Overview .....</b>	<b>2-3</b>
<b>Statements of Interest (SOIs) .....</b>	<b>4</b>
<b>Core Program .....</b>	<b>5-16</b>
Eligibility Period .....	5
Consultant Selection .....	6-7
Feasibility Study .....	8
Schematic Design .....	9
Commissioning .....	10
Design Development .....	11
Summary of Bid Data .....	12
Construction .....	13-14
<b>Accelerated Repair Program .....</b>	<b>15-18</b>
<b>Project Variances .....</b>	<b>19-20</b>
<i>Appendices</i>	
<i>(A) Project Status List</i>	
<i>(B) 2017 and 2018 Estimated Bid Dates</i>	
<i>(C) Construction Status Report</i>	

# CAPITAL PIPELINE OVERVIEW

## Status of Current Projects

A total of 367 projects that have received invitations from the Board of Directors (“Board”) to collaborate with the Massachusetts School Building Authority (“MSBA”) are currently in the MSBA’s Eligibility Period and Capital Pipeline. The summary chart provides the number of projects in Eligibility Period and each phase of the Capital Pipeline. For a detailed look at the Capital Pipeline projects, please go to [www.massschoolbuildings.org/building](http://www.massschoolbuildings.org/building) and select “Capital Pipeline Status Chart”.

Capital Planning Updates:



The following FY 17 objectives have been completed and approved by the Board:

- 11/9/16 - Remove the incentive points for use of the Construction Manager at Risk approved.
- 11/9/16 - Revisions to MSBA policy that would allow auditorium and gymnasium spaces above MSBA guidelines at the district’s sole expense for districts that are approved to proceed into Schematic Design on or after January 1, 2017.
- 11/9/16 - Remove the previously approved Model School designs from the Model School Program.
- 2/15/17 - Update the MSBA’s sustainability policies in relation to the 9<sup>th</sup> building code.
- 5/10/17 – Recommend Post Occupancy program for FY 18.

The following objectives are a forecast of what staff anticipates sharing at the June 2017 Board meetings:

- The initial round of staff recommendations for ARP invitations were presented at the May 12, 2017 Board meeting and the remaining ARP invitations will be recommended at the June 28, 2017 Board meeting. Staff recommendations for senior study visits for Core Program SOIs are anticipated at the June 28, 2017 Board meeting.
- The 2016 school survey visits to 1432 schools are complete as of January 31, 2017. The data is under review and districts were offered the opportunity to validate the information in May. Staff anticipates sharing the initial survey findings at the June 28, 2017 Board meeting.
- Staff anticipates sharing findings of the Eligibility Period review at the June 28, 2017 Board meeting.
- Staff anticipates sharing a recommendation for the MSBA’s Green Schools Incentive Points at the June 28, 2017 Board meeting.
- Staff anticipates sharing a recommendation for the MSBA’s funding limit for construction costs per square foot at the June 28, 2017 Board meeting.
- Staff anticipates sharing a recommendation for the Model School Program at the June 28, 2017 Board meeting.

## 2017 Progress Report

- Statement of Interest (“SOI”) 2017
  - The 2017 SOI submittal period opened on January 6, 2017 and closed on February 17, 2017 for the Accelerated Repair Program (“ARP”) and April 7, 2017 for the Core Program. The current status is as follows:
    - Recommendations for invitation to the ARP were forwarded at the May 12, 2017 Board meeting. Remaining recommendations are anticipated at the June 28, 2017 Board meeting.
    - Recommendations for Senior Study Visits are anticipated at the June 28, 2017 Board meeting. 83 SOIs were received for the Core Program.
- Eligibility Period
  - There are 17 districts in Eligibility Period.
- Feasibility Study/Schematic Design
  - Five districts received MSBA approval for selection of an Owner’s Project Manager (“OPM”).
  - Four districts completed Designer Selection.
  - 15 districts are anticipating submittals for the preferred schematic solutions between May 2017 and October 2017.
  - 11 districts are anticipating submittals for Project Funding Agreements between February 2017 and August 2017.
- Accelerated Repair Program (“ARP”)
  - No actions anticipated for Project Funding Agreements anticipated until Fall 2017.
- Construction Costs – Core Program
  - MSBA staff anticipates 11 projects will bid in 2017.
    - Of the 11 bids and/or executions of a GMP projected to bid in 2017, one project has completed the bidding process and its bids were within the estimated budget.
- Substantial Completion
  - Ten projects are projected to reach substantial completion in 2017. Two projects have reached substantial completion and an additional two are anticipated to achieve substantial completion by the end of June.

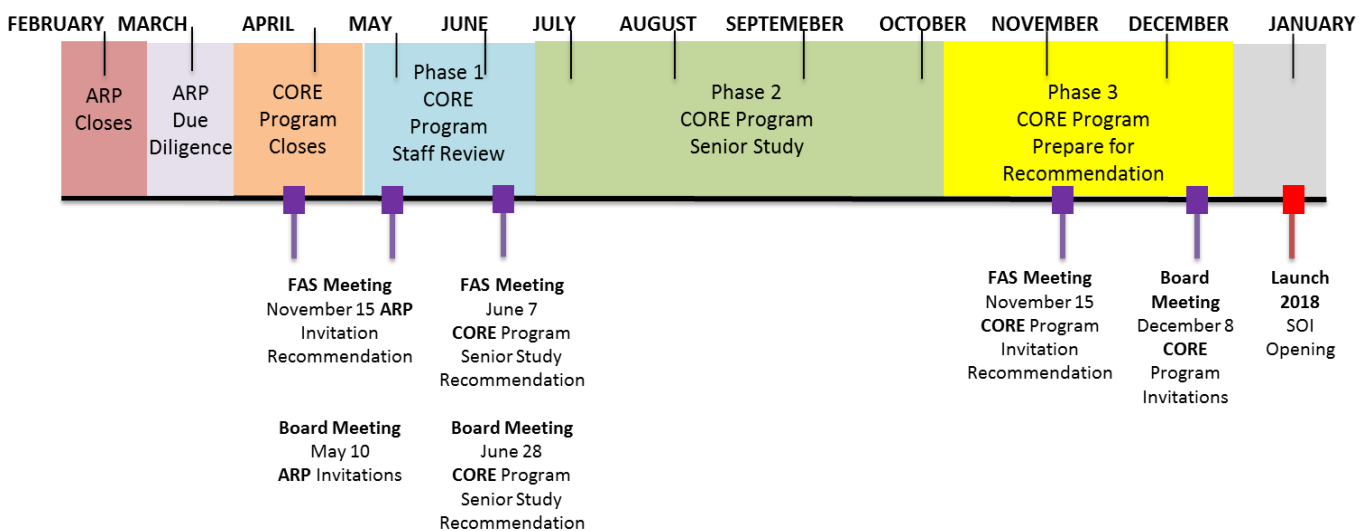
# STATEMENTS OF INTEREST (SOIs)

## 2017 SOI Process

The 2017 SOI submittal period opened on January 6, 2017. The deadline to file SOIs for consideration in the ARP, which is primarily for the repair and/or replacement of roofs, windows/doors, and/or boilers in an otherwise structurally sound facility ended on February 17, 2017. Given the potential budget impact from the 69 qualifying SOIs filed for the ARP program in 2017, at the April 24, 2017 Facilities Assessment Subcommittee Meeting and the May 12, 2017 Board of Directors Meeting, MSBA staff recommended limiting the number of ARP invitations this year. MSBA staff’s recommendation that only systems of 30 years or more be considered for invitation to the 2017 ARP was approved at the May 12, 2017 Board meeting.

For the 2017 ARP program, MSBA staff’s recommendation to invite systems of 30 years or more resulted in the consideration of 36 of the 69 schools for which qualifying SOIs were received. Of the 36 schools, the MSBA conducted site visits at 19 of these schools from March 21, 2017 to March 30, 2017. At the May 12, 2017 Board Meeting, the 19 schools received invitations to the 2017 ARP program. For the remaining 17 of 36 schools, the MSBA conducted site visits from May 2, 2017 to May 4, 2017. Upon collecting and reviewing additional information during and after the site visits, MSBA staff recommends the 17 schools for invitation to the 2017 ARP at the June 28, 2017 Board meeting.

The deadline to file SOIs for consideration in the Core Program, which is primarily for projects beyond the scope of ARP, including extensive repairs, renovations, addition/renovations, and new school construction opened on January 6, 2017 and ended Friday, April 7, 2017, with due diligence on the 83 submittals underway. Recommendation of Senior Study candidates were presented at the June 7, 2017 Facilities Assessment Subcommittee and are anticipated for the June 28, 2017 Board meeting.



# CORE PROGRAM

## ELIGIBILITY PERIOD

There are 17 districts in Eligibility Period, with five districts having secured their funding.

An agreed-upon enrollment is a key pre-requisite for the MSBA to commence a Feasibility Study with a district. To begin the enrollment projection process, a district must file enrollment information utilizing the MSBA's online enrollment projection tool. Four of the 17 districts currently in Eligibility Period have completed their online enrollment projection information.

District	School	Eligibility Period Commencement Date	30 days	60 days	90 days		180 days		270 days	Date of Invitation to Feasibility Study (Estimated)
			ICC	SBC	Online Enrollment Projection Info	Ed Profile Questionnaire	Maintenance Documents	Enrollment Certification	Local Authorization	
Bridgewater-Raynham	Mitchell ES	3/1/2017	X	X	X	X	X			TBD
Leicester	Leicester Middle School	3/1/2017	X	X	X	X			X	TBD
Millbury	Raymond E. Shaw ES	3/1/2017	X	X	X	X			X	TBD
Westborough	Annie E. Fales ES	3/1/2017	X	X	X	X			X	TBD
Acton-Boxborough	CT Douglas ES	4/3/2017	X	X						TBD
Easton	Center School	4/3/2017	X	X						TBD
Gloucester	East Gloucester ES	4/3/2017	X	X		X				TBD
Rockland	Jefferson ES	4/3/2017	X	X					X	TBD
Sharon	Sharon HS	4/3/2017	X	X						TBD
Fitchburg	Crocker ES	5/1/2017	X							TBD
Gardner	Waterford Street ES	5/1/2017	X	X						TBD
Lawrence	Oliver Partnership School	5/1/2017	X			X				TBD
Orange	Dexter Park School	5/1/2017	X							TBD
Braintree	South MS	6/1/2017	X							TBD
Nauset RSD	Nauset Regional HS	6/1/2017							X	TBD
Springfield	Deberry ES	6/1/2017					X			TBD
Worcester	Doherty Memorial HS	6/1/2017								TBD

## **CONSULTANT SELECTION**

### **Owner's Project Manager ("OPM") Selection**

After the district has completed all Eligibility Period requirements and has received a Board Invitation to Feasibility Study, the district procures an OPM. Since the last report, five districts have completed their OPM selection (shaded in the table below). Currently, there are eight districts in the Capital Pipeline that are in the process of procuring an OPM.

<b>District</b>	<b>School</b>	<b>Anticipated Selection</b>
Pentucket	Pentucket RHS	May 2017
Marblehead	Elbridge Gerry ES	May 2017
Shrewsbury	Beal ECC	May 2017
Danvers	Ivan G. Smith ES	June 2017
Springfield	Brightwood ES	June 2017
Framingham	Fuller Middle School	June 2017
Tewksbury	Louise Davy Trahan ES	June 2017
Arlington	Arlington HS	July 2017
Wareham	Minot Forest ES	July 2017
Holyoke	Lt. Elmer J. McMahon ES	August 2017
Amesbury	Amesbury ES	September 2017
Central Berkshire	Wahconah RHS	September 2017
West Springfield	Coburn ES	September 2017

## Designer Selection

After a district has selected and executed a contract with an OPM, the district selects a Designer by utilizing either a local designer selection process for projects under \$5 million or the MSBA’s Designer Selection Panel (“DSP”) for projects over \$5 million. Since the last report, four districts have completed their Designer selection (shaded in the table below). There are currently eight districts in the Capital Pipeline that are in the process of procuring a Designer.

District	School	Anticipated Selection
Dennis-Yarmouth RSD	Mattacheese MS	May 2017
Foxborough	Mabelle M. Burrell ES	May 2017
Ludlow	Chapin Street ES	May 2017
Weymouth	Maria Weston Chapman MS	May 2017
Belmont	Belmont HS	June 2017
Manchester Essex RSD	Manchester Memorial ES	June 2017
Northbridge	W. Edward Balmer ES	June 2017
Marblehead	Elbridge Gerry ES	July 2017
Pentucket	Pentucket RHS	July 2017
Shrewsbury	Beal Early Childhood Center	July 2017
Danvers	Ivan G Smith ES	August 2017
Springfield	Brightwood ES	August 2017

For additional information on the selected consultant teams, see Appendix A.



## **FEASIBILITY STUDY**

Once a district has procured an OPM and Designer, the district and the district's consultants must complete two Feasibility Study submittals, the Preliminary Design Program, and the Preferred Schematic Report, prior to Board consideration to proceed into Schematic Design. Based on the most recent data and schedules provided to the MSBA by districts, the MSBA anticipates that 15 districts will appear before the board for their Preferred Schematic Designs authorizations at the June, August, and October Board Meetings.

<b>District</b>	<b>School</b>	<b>Anticipated PS Board Date</b>
Boston	Boston Arts Academy	June 2017
Worcester	South High Community School	June 2017
Attleboro	Attleboro HS	August 2017
Easthampton	Maple ES	August 2017
Fall River	Durfee HS	August 2017
Harvard	Harvard ES	August 2017
Ipswich	Winthrop ES	August 2017
Lowell	Lowell HS	August 2017
Taunton	Mulcahey ES	August 2017
Tisbury	Tisbury ES	August 2017
Bristol County	Bristol County Agriculture HS	October 2017
Marlborough	Richer ES	October 2017
Natick	John F Kennedy MS	October 2017
Waltham	Waltham HS	TBD
Everett	Keverian K-8	TBD

## **SCHEMATIC DESIGN**

Prior to consideration by the Board for Project Scope and Budget Agreement authorization, a district must submit a Schematic Design to the MSBA for review. Based on the most recent data and schedules provided to the MSBA by districts, the MSBA anticipates that 11 districts will appear before the Board for Project Scope and Budget Agreement authorization at the upcoming June, August, October and December Board Meetings.

<b>District</b>	<b>School</b>	<b>Anticipated PS&amp;B Board Date</b>
Braintree	East MS	June 2017
Triton	Pine Grove ES	June 2017
Saugus	Saugus HS	June 2017
Blue Hills	Blue Hills Regional Technical HS	August 2017
Cape Cod Regional Vocational Technical	Cape Cod Regional Technical HS	August 2017
Clarksburg	Clarksburg ES	August 2017
Lexington	Maria Hastings ES	August 2017
Ipswich	Winthrop ES	October 2017
Middleboro	Middleboro HS	October 2017
Westport	Westport MS	October 2017
Boston	Josiah Quincy Upper School	December 2017

## COMMISSIONING

The MSBA assigns a Commissioning Consultant after a district has secured local funding for the Board approved project. Since the last report, the MSBA has assigned Commissioning Consultants to 7 additional projects presented in the table below.

District	School	Program	Estimated Const. Cost (million)	Commissioning Consultant	Contract Amount
Mashpee	Quashnet Roof and Windows	2016 ARP	\$9.18	CBI Consulting	\$64,200
Somerville	Somerville High School	Core	\$199.05	WSP USA	\$287,120
Springfield	Balliet MS, Balliet ES	2016 ARP	\$2.94	Building Enclosure Associates	\$46,000
Somerville	Winter Hill Roof Windows	2016 ARP	\$3.57	Thompson & Lichtner	\$23,395
Wayland	Loker Windows	2016 ARP	\$1.44	Thompson & Lichtner	\$13,520
Topsfield	2 schools	2016 ARP	\$6.21	Gale Associates	\$115,450
North Middlesex	3 schools	2016 ARP	\$13.05	Gale Associates	\$160,375

To date, the MSBA has executed 398 Commissioning Consultant contracts, totaling \$28.7 million. To date, 267 contracts have been completed.

The table below represents the status of commissioning assignments sorted by the fiscal year in which the commissioning work orders were issued.

Fiscal Year	No. Work Orders Issued	Value of Work Orders Issued	Total Invoiced*	Percent Complete
FY10	31	\$4,231,376	\$4,273,277	100%
FY11	95	\$6,132,890	\$6,058,460	99%
FY12	52	\$4,450,761	\$4,386,520	99%
FY13	55	\$3,364,697	\$3,378,993	100%
FY14	47	\$2,604,062	\$2,452,315	94%
FY15	44	\$2,277,711	\$1,691,408	74%
FY16	44	\$3,385,137	\$1,282,548	38%
FY17	37	\$2,290,661	\$201,689	9%
<b>Total</b>	<b>405</b>	<b>\$28,737,295</b>	<b>\$23,725,210</b>	

\*Includes approved additional services over value of Work Order

**DESIGN DEVELOPMENT**

After a district has secured local funding and has entered into a Project Funding Agreement (“PFA”) with the MSBA, the district enters into the Design Development Phase. Currently, there are 48 projects in the Design Development Phase with a total estimated construction cost of approximately \$914 million. Of those 48 projects, 37 are ARP Projects and 11 are Core Program Projects. The 11 Core Program Projects in Design Development have a total estimated construction cost of approximately \$806 million and are listed below.

Elementary School Districts	Middle School Districts	High School Districts	Other Grade Configurations
Bourne (3-5) Dedham (PK-K) Hanover (2-4) Narragansett RSD (PK-5)* Needham (K-5) Newton (K-5)	Quincy (5-8)	Billerica (9-12) Minuteman RSD (9-12) Stoughton (9-12) Somerville (9-12)	

*\*Town is currently under Audit Review for Fiscal Year 2015 and 2016. Bids have been delayed pending outcome of financial support for the project.*

**District Design Submittals**

During Design Development, districts submit three design submittals (Design Development, 60% Construction Documents, and 90% Construction Documents) for MSBA review. MSBA staff review documents to ensure the project is still in compliance with the PFA. The chart below indicates the number of submittals received and reviewed by the MSBA to date by type and by fiscal year.

Fiscal Year	DD Reviews	60% Reviews	90% Reviews	Total Reviews
2010	5	0	0	5
2011	21	24	20	65
2012	12	24	28	64
2013	20	20	19	59
2014	15	13	14	42
2015	6	12	13	31
2016	10	10	8	28
2017	11	10	12	33
<b>Totals</b>	<b>100</b>	<b>113</b>	<b>114</b>	<b>327</b>

## **SUMMARY OF BID DATA**

Based on the most recent data and schedules provided by the districts, 11 projects are scheduled to bid in 2017, and two projects are scheduled to bid in 2018.

Year	Number of Projects	Design Basis for Enrollment	Project Budget	Construction Budget
2017	11	6,828	\$822.01 million	\$647.42 million
2018	2	2,105	\$308.75 million	\$241.64 million
Grand Total	13	8,933	\$1.13 billion	\$1.54 billion

*Note: These numbers are based on preliminary information received from the District and are subject to further review and calculation.*

## **CONSTRUCTION**

When a district issues a Notice to Proceed, the project is advanced to the Construction Phase. Currently, there are 62 projects in the Construction Phase with a total estimated construction cost of \$1.24 billion. Of those 62 projects, 42 are ARP Projects, and 20 are Core Program Projects. This does not include the 32 projects that have reached substantial completion and are currently in the Building Complete Phase. The 20 Core Program Projects have a total estimated construction cost of \$1.15 billion and are listed below.

Elementary School Districts	Middle and Middle/High School Districts	High School Districts	Other Grade Configurations
Carver (PK-5) Granby (PK-3) Hopkinton (PK-1) New Bedford (PK-5) Westfield* (K-5) Woburn (K-5)	<u>Middle School Districts</u> Beverly (5-8) Chelsea (5-8) Scituate (6-8) Westborough (7-8)  <u>Middle/High School Districts</u> Boston - Dearborn MS (6-12)	North Middlesex RSD (9-12) Mt. Greylock RSD (9-12) Pittsfield (9-12) Plymouth (9-12) Winchester (9-12)	Abington (PK; 5-12) Brookline (K-8) Holbrook (PK-12) Worcester (PK-6)

*\*Note: Westfield, Abner Gibbs Elementary School, stopped construction in December of 2012 due to a preliminary injunction based upon project site status as Article 97 "Protected Land".*

### **Amendment to the Project Funding Agreement (PFA)**

Upon receipt of construction bids or the execution of a GMP, a district submits the Contractor's Schedule of Values to the MSBA. MSBA staff and the district collaborate to reconcile the actual construction costs against the estimated construction budget and an amendment to the PFA is executed to reflect bid costs. The chart, shown below, is the number of amendments to PFAs, listed by fiscal year.

Fiscal Year	Total Amendments
FY2012	30
FY2013	31
FY2014	31
FY2015	17
FY2016	22
FY2017	8

## Substantial Completion

Ten projects are scheduled to reach Substantial Completion in 2017. They are listed in the table below. For additional information on the construction status for each of these projects, see Appendix C.

Project	Enrollment	Contractor	OPM	Designer	Est. Substantial Completion Date	Actual Substantial Completion Date	Est. Actual Difference (days)
Plymouth Plymouth South HS	1005	Bacon-Agostini	Ted Gentry	Ai3	5/26/17	6/2/17	7
Worcester Nelson Place ES	600	Fontaine Brothers	Tishman	Lamoureux Pagano	5/31/17		
Abington Frolio Jr HS	870	Brait Builders	KBA	Ai3	6/1/17	5/31/17	-1
Holbrook PreK-12	1095	Consigli	SMMA	Flansburgh	6/15/17		
North Middlesex Reg. HS	1115	CTA Construction	Heery	SMMA	7/14/17		
Scituate Gates IS	710	Bacon-Agostini	Daedalus	Dore & Whittier	7/24/17		
New Bedford Hannigan ES	400	H.V. Collins	Daedalus	Turowski2 Architecture	8/7/17		
Westborough Sarah W. Gibbons MS	550	Gilbane	Heery	Habeeb & Associates Architects	8/25/17		
Winchester Winchester HS	1370	Consigli	Skanska	SMMA	8/31/17		
Boston Dearborn MS	600	Gilbane	Daedalus	Jonathan Levi	12/27/17		

# ACCELERATED REPAIR PROGRAM

Currently, there are 227 projects either active or completed in the ARP. The 227 projects are located in 103 districts, many of whom have been invited to ARP multiple times. All new information that has been updated since the last report is italicized.

Repair Program	Number of Districts	Number of Projects	Total Project Budgets	Maximum Facility Grants	Number of Projects Final Audit Approved
<i>2017 Accelerated*</i>	<i>13</i>	<i>19</i>	-	-	<i>0</i>
2016 Accelerated	28	48	\$156,598,234	\$83,007,586	0
2015 Accelerated	24	43	\$136,680,652	\$91,974,052	0
2014 Accelerated	34	47	\$108,410,084	\$65,388,035	18
2013 Accelerated	25	45	\$94,650,790	\$54,662,711	33
2012 Accelerated	24	36	\$63,009,653	\$38,267,952	36
Green	93	189	\$366,649,226	\$222,889,218	182

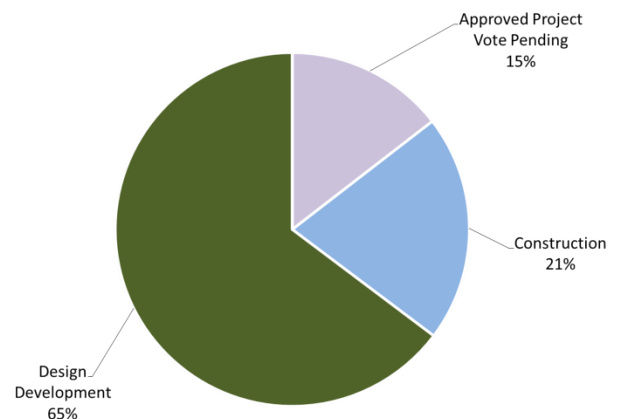
*\*Totals reflect projects invited to the Accelerated Repair Program as of the May 12, 2017 Board of Directors Meeting*

## 2017 Accelerated Repair Program

- *Invitations – 13 districts, representing 19 projects*
  - *Scope includes six roofs, 13 windows/doors, and seven boilers*

## 2016 Accelerated Repair Program

- *Invitations – 28 districts, representing 49 projects*
  - *Scope includes 25 roofs, 19 windows/doors, and 13 boilers*
- *SOI Removal - one project*
- *Approval for Project Funding Agreement - 22 districts, representing 37 projects*
- *Total Project Budgets - \$156,598,234*
- *MSBA Total Facilities Grant - \$83,007,586*
- *Two districts, representing two projects, required a schedule extension following PFA approval*
- *10 of 15 projects reporting bid within estimated budget*

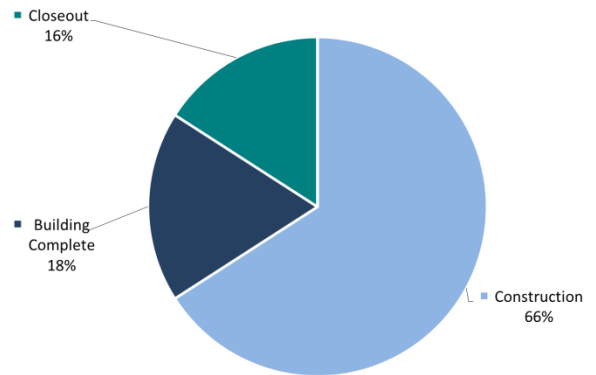


2016 ARP Status Chart



### 2015 Accelerated Repair Program

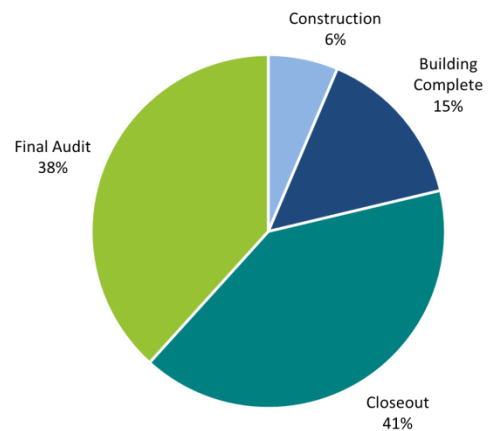
- Invitations – 24 districts, representing 44 projects
  - Scope includes 22 roofs, 26 windows/doors, and nine boilers
- SOI Removal – one project
- Approved for Project Funding Agreements – 24 districts, representing 43 projects
- Total Project Budgets - \$136,680,652
- MSBA Total Facilities Grants - \$91,974,052
- One district, representing one project, required a schedule extension following PFA Approval
- 81% of projects bid within estimated budgets



2015 ARP Status Chart

### 2014 Accelerated Repair Program

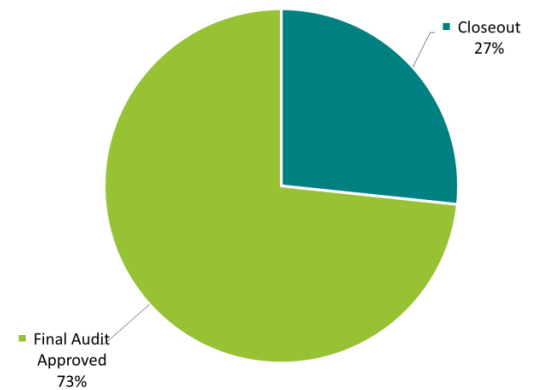
- Invitations – 36 districts, representing 51 projects
- SOI Removal – two districts, representing four projects
- Current 2014 ARP projects – 34 districts, representing 47 projects
  - Scope includes 20 roofs, 25 windows/doors, and 13 boilers
- Approved for Project Funding Agreements – 34 districts, representing 47 projects
- Total Project Budgets - \$108,410,084
- MSBA Total Facilities Grants - \$65,388,035
- Four districts, representing six projects, required schedule extensions following PFA approval
- 85% of projects bid within estimated budget
- *38% of projects have completed Final Audit*



2014 ARP Status Chart

### 2013 Accelerated Repair Program

- Invitations – 28 districts, representing 50 projects
- SOI Removals – three districts, representing five projects
- Approved for Project Funding Agreements – 26 districts, representing 47 projects
- Active Projects – 25 districts, representing 45 projects
  - Scope includes 30 roofs, 13 windows/doors, and seven boilers
- Total Project Budgets – \$94,650,790
- MSBA Total Facilities Grants – \$54,662,711
- Four districts, representing seven projects, required schedule extensions following PFA approval
- 82% of projects bid within estimated budget
- 73% of projects have completed Final Audit



2013 ARP Status Chart

## 2012 Accelerated Repair Program

- Approved Project Funding Agreements – 24 districts, representing 36 projects
- Scope includes 21 roofs, 11 windows/doors, and seven boilers
- 100% of projects have completed Final Audit
- Final Costs Submitted: \$47,748,996
- Final MSBA Total Facilities Grant: \$28,518,764

## Status of Green Repair Program

The Green Repair Program resulted in PFA authorizations totaling \$366,647,226 in Total Project Costs and \$222,889,218 in MSBA grants. Of the 189 projects, 182 have been approved for final grant payments. The seven projects that were not previously approved for final grant payments are substantially complete and require Final Audit.

## 2016 Accelerated Repair Projects – Construction Estimate vs. 2017-2018

- 10 of 15 reported projects bid within the estimated budget
- 14 of the remaining 33 projects will bid by the end of the July 2017 with an update anticipated at the August 2017 Board of Directors Meeting

District	School	Scope	Project Type	Bid Date	Construction Estimate **	Bid Amount **	Variance from Construction Estimate	Reimbursement Rate	Potential Grant Variance *
Carver	Carver Middle/High School	Roof, Partial Windows/Doors Boiler	DBB	Mar-17	\$4,735,668	\$3,770,000	\$965,668	57.74%	\$557,577
Auburn	Pakachoag	Roof	DBB	Mar-17	\$619,654	\$566,000	\$53,654	54.16%	\$29,059
Quincy	Merrymount	Partial Boiler	DBB	Mar-17	\$721,780	\$728,200	-\$6,420	66.12%	\$0
Quincy	Wollaston School	Partial Boiler	DBB	Mar-17	\$602,824	\$614,000	-\$11,136	66.12%	\$0
Quincy	Atherton Hough	Partial Boiler	DBB	Mar-17	\$692,906	\$499,800	\$193,106	66.12%	\$127,682
Quincy	Beechwood Knoll Elementary	Boiler	DBB	Mar-17	\$482,967	\$494,000	-\$11,033	66.12%	\$0
Agawam	Roberta G. Doering Middle School	Boiler	DBB	Apr-17	\$689,889	\$612,868	\$77,021	56.89%	\$43,817
Cambridge	Fletcher/Maynard Academy	Roof	DBB	Apr-17	\$805,564	\$597,500	\$208,154	36.99%	\$76,996
Worcester	Belmont Street Community	Windows/Doors	DBB	Apr-17	\$3,294,328	\$3,305,190	-\$10,862	78.95%	\$0
Worcester	Gerald Creamer Center	Windows/Doors Partial Boiler	DBB	Apr-17	\$2,528,821	\$2,203,200	\$325,621	78.95%	\$257,078
Worcester	Wawecus Road School	Windows/Doors	DBB	Apr-17	\$1,702,141	\$1,755,310	-\$53,169	78.95%	\$0
Worcester	Chandler Elementary Community	Windows/Doors Boilers	DBB	Apr-17	\$1,129,282	\$1,046,800	\$82,482	78.95%	\$0
Lawrence	High School Learning Center	Boiler	DBB	Apr-17	\$1,178,258	\$1,014,500	\$163,758	80.0%	\$131,006
Canton	Lt Peter M Hansen	Roof	DBB	May-17	\$1,415,900	\$1,276,150	\$139,750	45.11%	\$63,041
Gloucester	Gloucester High	Roof	DBB	May-17	\$4,229,171	\$2,496,350	\$1,732,821	58.19%	\$1,008,329
				<b>Total</b>	<b>\$24,829,283</b>	<b>\$20,979,868</b>	<b>\$3,849,415</b>		<b>\$2,359,704</b>

**Accelerated Repair Projects – Schedule Extension Update**

The MSBA has granted districts conditional extensions to their PFAs pending compliance with the following stipulations:

- The district must submit a detailed, revised, construction timeline that explains how the work will be completed at each school; and
- Any costs that are related to a district requesting an extension to the construction schedule will be the sole responsibility of the district and those costs are categorically ineligible for reimbursement by the MSBA.

Schedule delays for these districts can be attributed to local funding issues, lead time for windows, and construction delays on site. In no event have the extended schedules resulted in an increase to the Estimated Maximum Total Facilities Grant, as authorized by the Board.

One of the 43 2015 ARP Projects did not meet its construction completion date in 2016. This Project revised its construction schedule and is scheduled to be completed in 2017. Staff has reported previously on the shaded project listed below. (There is no new activity to report on.)

District	School	Scope	Original Construction Completion Date	Updated Construction Completion Date	Reason for Schedule Extension
Quincy	Beechwood Knoll Elementary	Roof Windows/Doors	8/23/2016	8/28/2017	The District and its consultants have determined that bidding for construction in 2017 would better serve the project budget and existing facilities.

*Two of the 48 2016 ARP Projects revised their construction schedule and are scheduled to be completed in 2018.*

District	School	Scope	Original Construction Completion Date	Updated Construction Completion Date	Reason for Schedule Extension
Dartmouth	Dartmouth Middle	Roof	8/30/17	8/30/18	The District and its consultants have determined that bidding for construction in 2018 would better serve the project budget and existing facilities. Construction in 2018 would also better ensure that all abatement work could occur in an unoccupied building.
North Brookfield	North Brookfield Elementary	Roof	9/5/17	8/27/18	The district and its consultants have determined that bidding for construction in 2018 would better serve the project budget and existing facilities.

# PROJECT VARIANCES

## Core Program – Total Project Budget Update

Upon receiving the Board’s approval of the Project Scope and Budget, the MSBA and participating districts enter into a Project Funding Agreement, which establishes the Total Project Budget and the Estimated Maximum Total Facilities Grant for an approved project. Staff has reported on budget increases for the 18 projects shaded below at previous Board Meetings. Project information that is new or updated from the last Board Meeting is un-shaded. In no event has the increase in budget resulted in an increase to the Estimated Maximum Total Facilities Grant, as authorized by the Board. Since the last report, one project has been added to the chart.

District	School	Scope	Project Funding Agreement		PFA Bid Amendment/ Final Audit		Reason for Increase to Total Project Budget
			Total Project Budget	Total Maximum Facilities Grant	Total Project Budget	Total Maximum Facilities Grant	
Andover	Bancroft ES	New	\$44,659,837	\$16,773,753	\$50,299,859	\$16,575,965	The District has appropriated additional funds to cover the costs associated with increased construction costs and additional contingencies for litigation/settlement costs and other ineligible costs.
Berlin-Boylston	Tahanto Regional HS	New	\$43,954,901	\$21,148,751	TBD	TBD	District submitted final project costs that exceeded the total project budget established at bid. Final Costs did not exceed the original total project budget established at Project Funding Agreement.
Burlington	Marshall Simonds MS	Add/Reno	\$32,865,272	\$17,143,365	\$34,221,929	\$15,362,127	The District appropriated at its May 2012 annual town meeting through Articles 18: 19, additional funds for the costs associated with the construction of the new field complex and field lighting replacement.
Essex North Shore Agricultural & Technical School District	Essex North Shore Agricultural & Technical HS	New	\$125,000,000	\$77,500,000	\$133,770,000	\$77,500,000	The Board was informed at the March 30, 2011 meeting that the Total Project Budget had increased due to additional ineligible scope that would be funded by DCAM.
			\$125,000,000	\$77,500,000	\$134,501,368	\$77,500,000	The District has appropriated additional funds to cover the costs associated with increased construction costs for horse tack barn renovations.
Greater New Bedford	Greater New Bedford Vocational and Technical High School	Add/Reno	\$17,099,808	\$13,543,920	\$16,396,429	\$12,258,642	District submitted final project costs that exceeded the total project budget established at bid. Final Costs did not exceed the original total project budget established at Project Funding Agreement.
Lexington	Joseph Estabrook ES	New	\$40,792,248	\$12,250,739	\$43,392,248	\$12,148,491	The District has executed a GMP that exceeds the Construction Budget of the PFA. The District has appropriated additional funds to cover the costs associated with increased construction costs and additional contingencies.
Newburyport	Nock/Molin MS	Add/Reno	\$26,997,326	\$13,697,934	\$28,170,749	\$12,520,326	The District has received additional funding to cover additional construction change order costs.
North Reading	North Reading MS/HS	Add/Reno	\$107,727,074	\$49,323,123	\$123,227,074	\$49,323,123	This is a CMR project. The estimated, reconciled construction costs tracked over budget at DD (\$9,746,655 over), 60% (\$4,655,965 over), and 90% (\$15,136,846 over). A Town override vote in March 2013 obtained an additional \$15,500,000 in local funding to proceed.
Norfolk County Agricultural	Norfolk County Agricultural HS	Add/Reno	\$28,552,385	\$15,369,712	\$30,589,078	\$13,867,050	The District has executed a Tender Agreement and Completion Agreement Contract, increasing its Total Project Budget, following the termination of its original construction contract.
Northborough	Lincoln Street ES	Add/Reno	\$25,530,553	\$10,407,408	\$25,530,553	\$10,407,408	The MSBA Board Approved Total Project Budget increased by \$60,400 from \$25,470,153 to \$25,530,553 due to the addition of an alternate, for a new ball field added at the District’s request.
Revere	Staff Sergeant James J. Hill ES	New	\$45,402,396	\$29,551,048	45,402,396	\$29,551,048	At Project Scope and Budget, the Total Project Budget was approved at \$44,382,396. The City of Revere has increased the land acquisition budget. Therefore, the projected total project budget at PFA has increased to \$45,402,396. Note that the MSBA grant has not changed since the Project Scope and Budget Agreement.
Somerville	East Somerville Community School	Add/Reno	\$33,185,258	\$15,237,996	\$38,006,621	\$15,237,996	At the March 28, 2012 Board Meeting, the Board approved an amendment to the PFA and a \$6.25M District loan.
Uxbridge	Uxbridge HS	New	\$43,000,000	\$22,362,328	\$44,986,479	\$22,362,328	The District has appropriated additional funds to cover the costs associated with the construction of athletic fields originally included in the PFA but which were not included in the bid as the District’s construction contract would have exceeded the budget.
Sutton	Sutton MS	Add/Reno	\$59,945,474	\$29,843,511	\$60,130,536	\$27,002,506	The District has executed a Tender Agreement and Completion Agreement Contract, increasing its Total Project Budget, following the termination of its original construction contract.
Weston	Field ES	New	\$31,504,146	\$8,310,510	\$32,654,146	\$8,105,549	District-approved Construction Change Orders exceeded available contingency amount.
Winchester	Winchester HS	Add/Reno	\$129,923,146	\$44,493,270	\$131,513,741	\$43,100,458	The MSBA Board Approved total Project Budget increased due to a construction change order for additional soil abatements at Skillings Field. Note that the increased Total Project Budget will not increase the Maximum Total Facilities Grant.
Winthrop	Winthrop MS/HS	New	\$81,818,740	\$42,582,841	\$81,432,986	\$41,249,005	The MSBA Board Approved Total Project Budget increased due to revised FEMA flood plain requirements which necessitated the elevation of the new building to be raised. Note that the increased Total Project Budget will not increase the Maximum Total Facilities Grant.

District	School	Scope	Project Funding Agreement		PFA Bid Amendment/ Final Audit		Reason for Increase to Total Project Budget
			Total Project Budget	Total Maximum Facilities Grant	Total Project Budget	Total Maximum Facilities Grant	
Woburn	Wyman-Hurld ES	New	\$33,705,396	\$14,387,427	TBD*	TBD*	The District had completed a project review with its Conservation Commission and an Order of Conditions was issued on June 12, 2015. A neighborhood group has appealed this Order and it is now under review by DEP. The District has experienced delays in completing its City Council vote for its appropriation and incurred additional costs.
Salem	Saltonstall ES	Repair	\$15,503,406	\$11,794,492	\$15,752,033	\$10,709,091	The District has executed a GMP that exceeds the Construction Budget of the PFA. The District has appropriated additional funds to cover the costs associated with increased construction costs and additional contingencies.

*\*PFA Bid Amendment has not been developed to calculate a revised Total Facilities Grant amount. The Total Maximum Facilities Grant will not exceed the Board authorized amount in the PFA but, upon review, may decrease.*

Date of Report: 6/7/2017  
 Total Projects: 367

MSBA ID	District	School	Project Phase	Project Type	Project Scope	Procurement Type	OPM	Designer	CM/GC	Commissioning Consultant
200800010405	Abington	Frolio Middle School	Construction	Core Program	New Construction	DBB	Knight, Bagge & Anderson Inc.	Ai3 Architects LLC	Brait Builders Corp.	Horizon Engineering Associates, LLP
201606000020	Acton-Boxborough	Douglas	Eligibility Period				-	-	-	-
201600050303	Agawam	Agawam Middle School	Design Development	Accelerated Repair	Boiler		STV   DPM (Ika STV Inc.)	Hesnor Engineering Company	-	BVH Integrated Services, P.C.
201500070005	Amesbury	Amesbury Elementary	OPM Selection	Core Program			-	-	-	-
201300080050	Amherst	Wildwood Elementary	Closeout	Core Program	New Construction	CM@R	NV5 (Ika Joslin, Lesser + Associates Inc.)	JCJ Architecture, PC	Fontaine Brothers, Inc.	-
200800090003	Andover	Bancroft Elementary School	Closeout	Core Program	New Construction	CM@R	Dore & Whittier Management Partners, Inc.	Symmes Maini & McKee Associates, Inc.	Skanska USA Building, Inc.	Sebesta Blomberg & Associates, Inc.
201500100505	Arlington	Arlington High	OPM Selection	Core Program			-	-	-	-
200908010605	Assabet Valley	Assabet Valley Regional Technical High School	Closeout	Core Program	Repair	DBB	Colliers International	Perkins Eastman/DPC	CTA Construction Co., Inc.	Symmes, Maini & McKee Associates
200906150020	Athol-Royalston	Riverbend School	Building Complete	Core Program	New Construction	DBB	Symmes Maini & McKee Associates	Mount Vernon Group Architects, Inc.	Fontaine Brothers, Inc.	Colliers International
201400160505	Attleboro	Attleboro High	Feasibility Study	Core Program			Skanska USA Building, Inc	Kaestle Boos Associates, Inc.	-	-
200800170305	Auburn	Auburn Middle	Closeout	Core Program	New Construction	CM@R	Skanska USA Building, Inc	Lamoureux Pagano & Associates, Inc.	Fontaine Brothers, Inc.	WSP USA
201400170305	Auburn	Auburn Middle	Closeout	Accelerated Repair	Roof, Boiler		Skanska USA Building, Inc	Dietz & Company Architects, Inc.	-	Horizon Engineering Associates, LLP   Thompson & Lichtner Co., Inc.
201400170010	Auburn	Bryn Mawr	Closeout	Accelerated Repair	Roof		Skanska USA Building, Inc	Dietz & Company Architects, Inc.	-	Thompson & Lichtner Co., Inc.
201600170015	Auburn	Pakachoag	Construction	Accelerated Repair	Roof		Hill International Company	CGKV Architects, Inc.	-	Thompson & Lichtner Co., Inc.
200806160505	Ayer-Shirley	Ayer-Shirley Regional Middle/High School	Closeout	Core Program	Addition / Renovation	CM@R	Dore and Whittier Architects, Inc.	Symmes Maini & McKee Associates, Inc.	Consigli Construction Company, Inc.	WSP USA
201400250020	Bellingham	South Elem	Closeout	Accelerated Repair	Roof		Atlantic Construction and Management, Inc.	Taylor & Burns, Inc.	Silkton Roofing	Building Enclosure Associates, LLC
201500260505	Belmont	Belmont High	Designer Selection	Core Program			Daedalus Projects Inc	-	-	-
200806200505	Berlin-Boylston	Tahanto Regional High School	Closeout	Core Program	New Construction	DBB	PMA Construction Services	HMFH Architects, Inc.	CTA Construction Co., Inc.	Colliers International
201300300305	Beverly	Briscoe Middle	Construction	Core Program	New Construction	CM@R	HEERY	Ai3 Architects LLC	Bacon-Agostini Construction Joint Venture	Bard, Rao + Athanas Consulting Engineers, LLC
201300310505	Billerica	Billerica Memorial High School	Design Development	Core Program	New Construction	CM@R	Leftfield, LLC	Perkins+Will	Shawmut Design and Construction	RDK Engineers
201508050605	Blackstone Valley Reg	Blackstone Valley	Closeout	Accelerated Repair	Roof		Watermark Environmental, Inc.	Russo Barr Associates, Inc.	Silkton Roofing	Gale Associates, Inc.
201206220505	Blackstone-Milville	Blackstone Milville RHS	Final Audit Approved	Accelerated Repair	Roof	DBB	Arcadis U.S., Inc.	DiMarinisi & Wolfe Architects Urban Designers	-	Gale Associates, Inc.
201706220008	Blackstone-Milville	John F Kennedy Elem	OPM Selection	Accelerated Repair	Windows / Doors, Boiler		-	-	-	-
201306220010	Blackstone-Milville	Milville Elem	Closeout	Accelerated Repair	Roof	DBB	Pinck & Co., Inc.	CBI Consulting Inc.	MDM Engineering	Simpson Gumpertz & Heger Inc.
201508060605	Blue Hills Voc	Blue Hills Reg Voc Tech	Schematic Design	Core Program	Addition / Renovation		Dore & Whittier Management Partners, Inc.	Drumme Rosane Anderson, Inc.	-	-
201300350546	Boston	Boston Arts Academy	Feasibility Study	Core Program			PMA Construction Services	Perkins Eastman/DPC	-	-
201600350560	Boston	Boston Latin	Construction	Accelerated Repair	Boiler		NV5 (Ika Joslin, Lesser + Associates Inc.)	ICON architecture, inc.	-	Rist-Frost-Shurway Engineering, P.C.
201500350052	Boston	Charles Sumner	Construction	Accelerated Repair	Windows / Doors		P3 Inc.	Dietz & Company Architects, Inc.	Lambrian Construction Corp.	Simpson Gumpertz & Heger Inc.
201500350020	Boston	Curley K-8 School	Construction	Accelerated Repair	Windows / Doors		P3 Inc.	Dietz & Company Architects, Inc.	GVW, Inc.	Simpson Gumpertz & Heger Inc.
201500350072	Boston	David A Ellis	Construction	Accelerated Repair	Windows / Doors		P3 Inc.	Dietz & Company Architects, Inc.	GVW, Inc.	Simpson Gumpertz & Heger Inc.
201500350080	Boston	Donald Mckay	Construction	Accelerated Repair	Windows / Doors		P3 Inc.	Dietz & Company Architects, Inc.	Paul J. Rogan Co., Inc.	Simpson Gumpertz & Heger Inc.
201500350651	Boston	Dorchester Academy	Construction	Accelerated Repair	Windows / Doors		P3 Inc.	Dietz & Company Architects, Inc.	Lambrian Construction Corp.	Simpson Gumpertz & Heger Inc.
201500350415	Boston	Grover Cleveland	Construction	Accelerated Repair	Windows / Doors		P3 Inc.	Dietz & Company Architects, Inc.	Paul J. Rogan Co., Inc.	Simpson Gumpertz & Heger Inc.
201000350074	Boston	Henry Dearborn Middle School	Construction	Core Program	New Construction	CM@R	Daedalus Projects Inc	Jonathan Levi Architects LLC	Gilbane Building Company	Symmes, Maini & McKee Associates
201600350146	Boston	James Condon Elem	Construction	Accelerated Repair	Boiler		NV5 (Ika Joslin, Lesser + Associates Inc.)	ICON architecture, inc.	-	Rist-Frost-Shurway Engineering, P.C.
201600350179	Boston	John W McCormack	Construction	Accelerated Repair	Roof		NV5 (Ika Joslin, Lesser + Associates Inc.)	ICON architecture, inc.	-	Simpson Gumpertz & Heger Inc.
201600350268	Boston	Paul A Dever	Construction	Accelerated Repair	Roof		NV5 (Ika Joslin, Lesser + Associates Inc.)	ICON architecture, inc.	-	Simpson Gumpertz & Heger Inc.
201000350565	Boston	Quincy Upper School	Schematic Design	Core Program			Skanska USA Building, Inc	HMFH Architects, Inc.	-	-
201600350360	Boston	William Ellery Channing	Construction	Accelerated Repair	Boiler		NV5 (Ika Joslin, Lesser + Associates Inc.)	ICON architecture, inc.	-	Rist-Frost-Shurway Engineering, P.C.
201500350380	Boston	Young Achievers	Construction	Accelerated Repair	Windows / Doors		P3 Inc.	Dietz & Company Architects, Inc.	Lockheed Window Corporations	Simpson Gumpertz & Heger Inc.
201400360010	Bourne	James F Peebles Elem	Design Development	Core Program	New Construction	DBB	Symmes Maini & McKee Associates, Inc.	Flansburgh Associates, Inc.	-	BVH Integrated Services, P.C.
201600380013	Boxford	Spofford Pond	Design Development	Accelerated Repair	Roof, Windows / Doors		NETCO Construction Project Managers, Inc.	Russo Barr Associates, Inc.	-	CBI Consulting Inc.
201300400305	Braintree	East Middle School	Schematic Design	Core Program			Hill International Company	Miller Dyer Spears Inc.	-	-
201600400310	Braintree	South Middle School	Eligibility Period	Core Program			-	-	-	-
201206250320	Bridgewater-Raynham	Bridgewater Middle School	Final Audit Approved	Accelerated Repair	Roof	DBB	Vertex Construction Services	-	-	CBI Consulting Inc.
201206250050	Bridgewater-Raynham	Laliberte Elementary School	Final Audit Approved	Accelerated Repair	Roof	DBB	Vertex Construction Services	Raymond Design Associates, Inc.	-	CBI Consulting Inc.
201206250020	Bridgewater-Raynham	Merrill Elementary School	Final Audit Approved	Accelerated Repair	Roof	DBB	Vertex Construction Services	Raymond Design Associates, Inc.	-	CBI Consulting Inc.
201606250002	Bridgewater-Raynham	Mitchell Elementary School	Eligibility Period	Core Program			-	-	-	-
201409100705	Bristol County Agr	Bristol County Agr High	Feasibility Study	Core Program			Colliers International	HMFH Architects, Inc.	-	-

Date of Report: 6/7/2017

Total Projects: 367

MSBA ID	District	School	Project Phase	Project Type	Project Scope	Procurement Type	OPM	Designer	CM/GC	Commissioning Consultant
201400440421	Brockton	Ashfield Middle School	Construction	Accelerated Repair	Roof, Boiler		Architectural Consulting Group, LLC	Tighe & Bond, Inc.	-	Rist-Frost-Shumway Engineering, P.C.   Simpson Gumpertz & Heger Inc.
201400440080	Brockton	Barrett Russell School	Building Complete	Accelerated Repair	Windows / Doors		Architectural Consulting Group, LLC	Tighe & Bond, Inc.	Reliable Roofing and Sheet Metal, LLC	Simpson Gumpertz & Heger Inc.
201400440010	Brockton	Brookfield	Construction	Accelerated Repair	Roof		Architectural Consulting Group, LLC	Tighe & Bond, Inc.	-	Simpson Gumpertz & Heger Inc.
201400440035	Brockton	Gilmore	Construction	Accelerated Repair	Roof, Boiler		Architectural Consulting Group, LLC	Tighe & Bond, Inc.	-	Rist-Frost-Shumway Engineering, P.C.   Simpson Gumpertz & Heger Inc.
201100460015	Brookline	Edward Devotion	Construction	Core Program	Addition / Renovation	CM@R	Town Employee	HMFH Architects, Inc.	Shawmut Design and Construction	Consulting Engineering Services, LLC
201500490090	Cambridge	Fletcher/Maynard Academy	Building Complete	Accelerated Repair	Boiler		Skanska USA Building, Inc	TSKP Studio, LLC	CAM HVAC & Construction, Inc.	Fitzmeyer & Tocci Associates, Inc.
201600490090	Cambridge	Fletcher/Maynard Academy	Construction	Accelerated Repair	Roof		Arcadis U.S., Inc.	HAKS Engineers, P.C.	-	Gale Associates, Inc.
201500490040	Cambridge	Kennedy-Longfellow	Building Complete	Accelerated Repair	Roof		Skanska USA Building, Inc	TSKP Studio, LLC	Greenwood Industries, Inc.	Thompson & Lichtner Co., Inc.
201200500012	Canton	Lt Peter M Hansen	Final Audit Approved	Accelerated Repair	Windows / Doors	DBB	Vertex Construction Services	CSS Architects Incorporated	Lockheed Window Corporations	Simpson Gumpertz & Heger Inc.
201600500012	Canton	Lt Peter M Hansen	Construction	Accelerated Repair	Roof		Watermark Environmental, Inc.	Kaestle Boos Associates, Inc.	-	Simpson Gumpertz & Heger Inc.
201200500305	Canton	Wm H Galvin Middle	Final Audit Approved	Accelerated Repair	Windows / Doors	DBB	Vertex Construction Services	CSS Architects Incorporated	Lockheed Window Corporations	Simpson Gumpertz & Heger Inc.
201408150605	Cape Cod Region Voc Tech	Cape Cod Region Voc Tech	Schematic Design	Core Program			Colliers International	Drummeys Rosane Anderson, Inc.	-	-
201300520015	Carver	Carver Elementary School	Construction	Core Program	New Construction		PMA Construction Services	HMFH Architects, Inc.	CTA Construction Co., Inc.	Symmes, Maini & McKee Associates
201600520405	Carver	Carver Middle/High School	Construction	Accelerated Repair	Roof, Windows / Doors, Boiler		Leftfield, LLC	Johnson Roberts Associates, Inc.	J.J. Cardosi, Inc.	Symmes, Maini & McKee Associates
201506350505	Central Berkshire	Wahconah Regional High	OPM Selection	Core Program			-	-	-	-
200800570050	Chelsea	Clark Avenue School	Construction	Core Program	New Construction	CM@R	Pinck & Co., Inc.	HMFH Architects, Inc.	W. T. Rich Company Inc.	Cannon Design
201500610010	Chicopee	Belcher	Building Complete	Accelerated Repair	Roof		NV5 (Ika Joslin, Lesser + Associates Inc.)	Kaestle Boos Associates, Inc.	J.D. Rivet & Co., Inc.	Building Enclosure Associates, LLC
201600610015	Chicopee	Bowe	Design Development	Accelerated Repair	Windows / Doors		Compass Project Management, Inc.	Turowski2 Architecture, Inc.	-	Thompson & Lichtner Co., Inc.
200900610021	Chicopee	Chicopee Academy	Building Complete	Core Program	Renovation	DBB	Arcadis U.S., Inc.	Caolo & Bieniek Associates, Inc.	Fontaine Brothers, Inc.	Symmes, Maini & McKee Associates
201500610310	Chicopee	Fairview Middle	Building Complete	Accelerated Repair	Roof		NV5 (Ika Joslin, Lesser + Associates Inc.)	Kaestle Boos Associates, Inc.	J.D. Rivet & Co., Inc.	Building Enclosure Associates, LLC
201600610050	Chicopee	Selser	Design Development	Accelerated Repair	Roof		Compass Project Management, Inc.	Turowski2 Architecture, Inc.	-	Thompson & Lichtner Co., Inc.
201400630010	Clarksburg	Clarksburg Elementary	Schematic Design	Core Program	Addition / Renovation		PCA 360	Jones Whitsett Architects, Inc.	-	-
200906400505	Concord-Carlisle	Concord-Carlisle Regional High School	Final Audit Approved	Core Program	New Construction	CM@R	KV Associates, Inc.	OMR Architects, Inc.	Turner Construction Company	Colliers International
200800710505	Danvers	Danvers High School	Final Audit Approved	Core Program	Addition / Renovation	DBB	Construction Monitoring Services, Inc.	DiNisco Design, Inc.	Bacon Construction Co, Inc.	Turner Facilities Management Solutions
201500710032	Danvers	Ivan G Smith	Designer Selection	Core Program			-	-	-	-
201600720050	Dartmouth	Dartmouth Middle	Design Development	Accelerated Repair	Roof		Atlantic Construction and Management, Inc.	CSS Architects Incorporated	-	CBI Consulting Inc.
201400720030	Dartmouth	George H Potter	Final Audit Approved	Accelerated Repair	Roof		Pinck & Co., Inc.	Russo Barr Associates, Inc.	Greenwood Industries, Inc.	Gale Associates, Inc.
201200730005	Dedham	Early Childhood Center	Design Development	Core Program	New Construction	DBB	Construction Monitoring Services, Inc.	Knight, Bagge & Anderson, Inc.	C.J. Marbady, Inc.	Symmes, Maini & McKee Associates
201500740015	Deerfield	Deerfield Elem	Closeout	Accelerated Repair	Roof		Pinck & Co., Inc.	Raymond Design Associates, Inc.	MDM Engineering	Russo Barr Associates, Inc.
201506450305	Dennis-Yarmouth	Mattacheese Middle Sch	Feasibility Study	Core Program			-	-	-	-
201306500305	Dighton-Rehoboth	Dighton Middle School	Final Audit Approved	Accelerated Repair	Roof	DBB	Arcadis U.S., Inc.	Dietz & Company Architects, Inc.	MDM Engineering	Gale Associates, Inc.
200800770010	Douglas	Douglas Elementary	Final Audit Approved	Core Program	New Construction - Model School	DBB	HEERY	DiNisco Design, Inc.	CTA Construction Co., Inc.	Consulting Engineering Services, LLC
200800770100G	Douglas	Douglas Intermediate Elementary School	Final Audit Approved	Green Repair	Roof, Windows / Doors, Boiler	DBB	HEERY	DiNisco Design, Inc.	CTA Construction Co., Inc.	Consulting Engineering Services, LLC
200800790505	Dracut	Dracut Senior High School	Closeout	Core Program	Addition / Renovation	DBB	Hill International Company	Mount Vernon Group Architects, Inc.	CTA Construction Co., Inc.	RDK Engineers
201000820505	Duxbury	Duxbury High School	Final Audit Approved	Core Program	New Construction - Model School	CM@R	KV Associates, Inc.	Mount Vernon Group Architects, Inc.	Dimeo Construction Company	WSP USA
200900830505	East Bridgewater	East Bridgewater High School	Final Audit Approved	Core Program	New Construction - Model School	DBB	Hill International Company	Ai3 Architects LLC	Fontaine Brothers, Inc.	Foreman Building Commissioning, LP
201400860010	Easthampton	Maple	Feasibility Study	Core Program			Colliers International	Caolo & Bieniek Associates, Inc.	-	-
201600880003	Easton	Center School	Eligibility Period				-	-	-	-
201300880020	Easton	Moreau Hall	Final Audit Approved	Accelerated Repair	Roof	DBB	Skanska USA Building, Inc	Baker/Wohl Architects, Inc.	Capeway Roofing Systems, Inc.	Gale Associates, Inc.
200809130705	Essex Agr Tech	Essex Agricultural and Technical High School	Closeout	Core Program	New Construction	CM@R	PMA Construction Services	Perkins Eastman/DPC	Gilbane Building Company	Turner Facilities Management Solutions
201400930028	Everett	George Keverian School	Feasibility Study	Core Program			Symmes Maini & McKee Associates, Inc.	Mount Vernon Group Architects, Inc.	-	-
201500940305	Fairhaven	Hastings Middle	Closeout	Accelerated Repair	Roof		PCA 360	CGKV Architects, Inc.	Capeway Roofing Systems, Inc.	Gale Associates, Inc.
201400950505	Fall River	B M C Durfee High	Feasibility Study	Core Program			Leftfield, LLC	Ai3 Architects LLC	-	-
201700950140	Fall River	James Tansey	OPM Selection	Accelerated Repair	Windows / Doors, Boiler		-	-	-	-
201700950145	Fall River	Samuel Watson	OPM Selection	Accelerated Repair	Roof, Windows / Doors, Boiler		-	-	-	-



Date of Report: 6/7/2017

Total Projects: 367

MSBA ID	District	School	Project Phase	Project Type	Project Scope	Procurement Type	OPM	Designer	CM/GC	Commissioning Consultant
201400960405	Falmouth	Lawrence	Closeout	Accelerated Repair	Windows / Doors		PMA Construction Services	Civitects PC	GVW, Inc.	Gale Associates, Inc.
201600970016	Fitchburg	Crocker Elementary	Eligibility Period	Core Program			-	-	-	-
201500990015	Foxborough	Mabelle M Burrell	Designer Selection	Core Program			Colliers International	-	-	-
201501000305	Framingham	Fuller Middle	OPM Selection	Core Program			-	-	-	-
200901010505	Franklin	Franklin High School	Closeout	Core Program	New Construction - Model School	DBB	Daedalus Projects Inc	Ai3 Architects LLC	Bacon-Agostini Construction Joint Venture	Consulting Engineering Services, LLC
201408180605	Franklin County	Franklin County Tech	Building Complete	Accelerated Repair	Windows / Doors		Colliers International	Habeeb & Associates Architects, Inc.	Gardner Construction & Industrial Services	CBI Consulting Inc.
201401030001	Gardner	Elm Street School	Closeout	Accelerated Repair	Windows / Doors, Boiler		Hill International Company	ICON architecture, inc.	Lockheed Window Corporations	Fitzmeyer & Tocci Associates, Inc.   Thompson & Lichtner Co., Inc.
201601030020	Gardner	Waterford Street	Eligibility Period	Core Program			-	-	-	-
200801050505	Georgetown	Georgetown Middle/High School	Closeout	Core Program	Renovation	DBB	Municipal Building Consultants, Inc.	Drumme Rosane Anderson, Inc.	L.D. Russo, Inc.	WSP USA
200901050010	Georgetown	Penn Brook Elementary School	Building Complete	Core Program	New Construction	DBB	Municipal Building Consultants, Inc.	Drumme Rosane Anderson, Inc.	Brait Builders Corp.	Rist-Frost-Shumway Engineering, P.C.
201406740050	Gill-Montague	Sheffield Elementary	Closeout	Accelerated Repair	Windows / Doors, Boiler		NETCO Construction Project Managers, Inc.	The S/L/A/M Collaborative	Gardner Construction & Industrial Services	CBI Consulting Inc.
201601070020	Gloucester	East Gloucester Elem	Eligibility Period				-	-	-	-
201601070505	Gloucester	Gloucester High	Design Development	Accelerated Repair	Roof		P3 Inc.	Baker/Wohl Architects, Inc.	-	CBI Consulting Inc.
200901070050	Gloucester	West Parish Elementary School	Building Complete	Core Program	New Construction	CM@R	Knight, Bagge & Anderson Inc.	Dore & Whittier Architects, Inc.	W. T. Rich Company Inc.	Fitzmeyer & Tocci Associates, Inc.
201701100030	Grafton	North St Elementary School	OPM Selection	Accelerated Repair	Windows / Doors		-	-	-	-
201201110010	Granby	West St	Construction	Core Program	Addition / Renovation		Colliers International	Jones Whitsett Architects, Inc.	Fontaine Brothers, Inc.	Rist-Frost-Shumway Engineering, P.C.
201108230605	Greater Lawrence RVT	Gr Lawrence Reg Voc Tech	Final Audit Approved	Core Program	Repair	DBB	Vertex Construction Services	Richard D. Kimball Company, Inc.	E. Amanti & Sons, Inc.	WSP USA
200908280605	Greater Lowell Voc Tec	Greater Lowell Regional Technical High School	Closeout	Core Program	Addition / Renovation	CM@R	NV5 (Ika Joslin, Lesser + Associates Inc.)	Knight, Bagge & Anderson, Inc.	Consigli Construction Company, Inc.	Horizon Engineering Associates, LLP
201008250605	Greater New Bedford	Greater New Bedford Vocational Technical High School	Final Audit Approved	Core Program	Addition / Renovation	DBB	Construction Monitoring Services, Inc.	Drumme Rosane Anderson, Inc.	Agostini Construction Co., Inc.	Symmes, Maini & McKee Associates
201501140010	Greenfield	Federal	Construction	Accelerated Repair	Roof, Windows / Doors, Boiler		-	-	-	Colliers International
201401140030	Greenfield	Green River	Closeout	Accelerated Repair	Roof, Windows / Doors, Boiler		Arcadis U.S., Inc.	Baker/Wohl Architects, Inc.	RAC Builders, Inc.	CBI Consulting Inc.
200901140505	Greenfield	Greenfield High School	Closeout	Core Program	New Construction	CM@R	Construction Monitoring Services, Inc.	Dore & Whittier Architects, Inc.	Shawmut Design and Construction	BVH Integrated Services, P.C.
201601180005	Halifax	Halifax Elementary	Design Development	Accelerated Repair	Roof, Windows / Doors		Vertex Construction Services	Habeeb & Associates Architects, Inc.	-	Russo Barr Associates, Inc.
201306750015	Hamilton-Wenham	Winthrop School	Final Audit Approved	Accelerated Repair	Windows / Doors, Boiler	DBB	NETCO Construction Project Managers, Inc.	Habeeb & Associates Architects, Inc.	E. Amanti & Sons, Inc.	CBI Consulting Inc.   Colliers International
201406800030	Hampden-Wilbraham	Soule Road	Final Audit Approved	Accelerated Repair	Windows / Doors		exPERTcon, Inc.	The S/L/A/M Collaborative	-	-
201301220015	Hanover	Sylvester	Design Development	Core Program	Addition / Renovation		P3 Inc.	Mount Vernon Group Architects, Inc.	-	Horizon Engineering Associates, LLP
201501250005	Harvard	Harvard Elementary	Feasibility Study	Core Program			NV5 (Ika Joslin, Lesser + Associates Inc.)	Arrowstreet Inc.	-	-
201201280035	Haverhill	Caleb Dustin Hunking	Building Complete	Core Program	New Construction	CM@R	NV5 (Ika Joslin, Lesser + Associates Inc.)	JCJ Architecture, PC	Shawmut Design and Construction	Colliers International
201101280100G	Haverhill	Consentino	Closeout	Green Repair	Windows / Doors	DBB	Vertex Construction Services	CSS Architects Incorporated	New England Builders & Contractors, Inc.	RDK Engineers   Russo Barr Associates, Inc.
201101280085G	Haverhill	John G Whittier	Closeout	Green Repair	Windows / Doors	DBB	Vertex Construction Services	CSS Architects Incorporated	New England Builders & Contractors, Inc.	Russo Barr Associates, Inc.
201101280075G	Haverhill	Tilton	Closeout	Green Repair	Roof	DBB	Vertex Construction Services	CSS Architects Incorporated	Titan Roofing, Inc.	Russo Barr Associates, Inc.
201101280080G	Haverhill	Walnut Square	Closeout	Green Repair	Roof, Windows / Doors	DBB	Vertex Construction Services	CSS Architects Incorporated	Titan Roofing, Inc.	RDK Engineers   Russo Barr Associates, Inc.
201001310410	Hingham	Hingham Middle School	Closeout	Core Program	New Construction - Model School	DBB	Knight, Bagge & Anderson Inc	Ai3 Architects LLC	Brait Builders Corp.	Foreman Building Commissioning, LP
200801330505	Holbrook	Holbrook Junior-Senior High School	Construction	Core Program	New Construction	CM@R	Symmes Maini & McKee Associates, Inc.	Flansburgh Associates, Inc.	Consigli Construction Company, Inc.	Consulting Engineering Services, LLC
201401370045	Holyoke	E N White Elem	Building Complete	Accelerated Repair	Boiler		STV   DPM (Ika STV Inc.)	Richard D. Kimball Company, Inc.	Inc.	BVH Integrated Services, P.C.
201701370010	Holyoke	Lawrence Elem	Feasibility Study				-	-	-	-
201201370015	Holyoke	Lt Elmer J McMahon Elem	OPM Selection	Core Program			-	-	-	-
201401370025	Holyoke	Morgan Elem	Building Complete	Accelerated Repair	Boiler		STV   DPM (Ika STV Inc.)	Richard D. Kimball Company, Inc.	Adams Plumbing and Heating, Inc.	BVH Integrated Services, P.C.
201201370605	Holyoke	Wm J Dean Voc Tech High	Closeout	Science Lab Initiative	Addition / Renovation	DBB	Skanska USA Building, Inc	Kaestle Boos Associates, Inc.	RAC Builders, Inc.	BVH Integrated Services, P.C.
201301390005	Hopkinton	Center	Construction	Core Program	New Construction	CM@R	Compass Project Management, Inc.	Drumme Rosane Anderson, Inc.	Colantonio, Inc.	RDK Engineers
200801410410	Hudson	John F. Kennedy Middle School	Closeout	Core Program	New Construction	DBB	PMA Construction Services	OMR Architects, Inc.	Bacon-Agostini Construction Joint Venture	WSP USA
201401410007	Hudson	Mulready Elementary	Closeout	Accelerated Repair	Roof		Atlantic Construction and Management, Inc.	Raymond Design Associates, Inc.	Capeway Roofing Systems, Inc.	CBI Consulting Inc.
201401440015	Ipswich	Winthrop	Schematic Design	Core Program			PMA Construction Services	Perkins Eastman/DPC	-	-
201701490008	Lawrence	Arlington Elementary School	OPM Selection	Accelerated Repair	Roof, Boiler		-	-	-	-
201601490050	Lawrence	Henry K Oliver	Eligibility Period				-	-	-	-
201601490536	Lawrence	High School Learning Center	Construction	Accelerated Repair	Boiler		Pinck & Co., Inc.	Shekar & Associates, Inc.	-	Fitzmeyer & Tocci Associates, Inc.
201701490537	Lawrence	School for Exceptional Studies	OPM Selection	Accelerated Repair	Roof		-	-	-	-
201501510505	Leicester	Leicester High	Building Complete	Accelerated Repair	Roof		Hill International Company	Gale Associates, Inc.	Greenwood Industries, Inc.	Russo Barr Associates, Inc.



Date of Report: 6/7/2017  
 Total Projects: 367

MSBA ID	District	School	Project Phase	Project Type	Project Scope	Procurement Type	OPM	Designer	CM/GC	Commissioning Consultant
201601510015	Leicester	Leicester Middle	Eligibility Period	Core Program			-	-	-	-
201501530025	Leominster	Johnny Appleseed	Construction	Accelerated Repair	Roof, Windows / Doors		NETCO Construction Project Managers, Inc.	Habeeb & Associates Architects, Inc.	Greenwood Industries, Inc.	Russo Barr Associates, Inc.
201401530030	Leominster	Northwest	Closeout	Accelerated Repair	Roof		Architectural Consulting Group, LLC	Gale Associates, Inc.	Greenwood Industries, Inc.	Building Enclosure Associates, LLC
201501550035	Lexington	Maria Hastings	Schematic Design	Core Program	New Construction		Dore & Whittier Management Partners, Inc.	DiNisco Design, Inc.	-	-
201401600505	Lowell	Lowell High	Feasibility Study	Core Program			Skanska USA Building, Inc	Perkins Eastman/DPC	-	-
201501610020	Ludlow	Chapin Street Elementary School	Feasibility Study	Core Program			-	-	-	-
201501610010	Ludlow	East Street Elementary School	Building Complete	Accelerated Repair	Roof, Boiler		STV   DPM (fka STV Inc.)	Johnson Roberts Associates, Inc.	Westfield Construction Co., Inc.	Colliers International
201001620505	Lunenburg	Lunenburg High School	Building Complete	Core Program	New Construction	CM@R	NV5 (fka Joslin, Lesser + Associates Inc.)	Tappe Associates, Inc.	Shawmut Design and Construction	Cannon Design
201401630045	Lynn	E J Harrington	Closeout	Accelerated Repair	Roof		NETCO Construction Project Managers, Inc.	Habeeb & Associates Architects, Inc.	Capeway Roofing Systems, Inc.	CBI Consulting Inc.
201701630055	Lynn	Hood	OPM Selection	Accelerated Repair	Roof, Windows / Doors		-	-	-	-
201401630420	Lynn	Pickering Middle	Closeout	Core Program			Lelfield, LLC	Raymond Design Associates, Inc.	-	-
200901630305	Lynn	Thurgood Marshall Middle School	Closeout	Core Program	New Construction	CM@R	NV5 (fka Joslin, Lesser + Associates Inc.)	Raymond Design Associates, Inc.	Walsh Brothers, Inc.	Rist-Frost-Shumway Engineering, P.C.
201401630040	Lynn	Wm P Connery	Final Audit Approved	Accelerated Repair	Roof		NETCO Construction Project Managers, Inc.	Habeeb & Associates Architects, Inc.	Gibson Roofs, Inc.	CBI Consulting Inc.
201506980010	Manchester Essex Regional	Manchester Memorial Elementary	Designer Selection	Core Program			-	-	-	-
201701670505	Mansfield	Mansfield High	OPM Selection	Accelerated Repair	Windows / Doors		-	-	-	-
201501680015	Marblehead	Elbridge Gerry	Designer Selection	Core Program			-	-	-	-
201501700025	Marlborough	Richer	Feasibility Study	Core Program			Daedalus Projects Inc	Lamoureux Pagano & Associates, Inc.	-	-
201601710310	Marshfield	Furnace Brook Middle	Design Development	Accelerated Repair	Roof		PCA 360	Civitects PC	-	Russo Barr Associates, Inc.
201101710505	Marshfield	Marshfield High	Closeout	Core Program	New Construction - Model School	DBB	Compass Project Management, Inc.	Ai3 Architects LLC	Brait Builders Ventures	Sebesta Blomberg & Associates, Inc.
201601720035	Mashpee	Quashnet School	Design Development	Accelerated Repair	Windows / Doors		exPERTcon, Inc.	Raymond Design Associates, Inc.	-	CBI Consulting Inc.
201401750007	Medfield	Ralph Wheelock School	Building Complete	Accelerated Repair	Boiler		-	-	Performance Plumbing and Heating	RDK Engineers
201301760505	Medford	Medford High	Closeout	Accelerated Repair	Windows / Doors, Boiler	DBB	Architectural Consulting Group, LLC	Dietz & Company Architects, Inc.	NB Kenney Company, Inc	Symmes, Maini & McKee Associates
201401770013	Medway	John D Mc Govern Elem	Final Audit Approved	Accelerated Repair	Windows / Doors		Arcadis U.S., Inc.	CBI Consulting Inc.	-	Russo Barr Associates, Inc.
201401780017	Melrose	Herbert Clark Hoover	Closeout	Accelerated Repair	Windows / Doors		Colliers International	ICON architecture, inc.	GVW, Inc.	Simpson Gumpertz & Heger Inc.
200801810505	Methuen	Methuen High School	Final Audit Approved	Core Program	Addition / Renovation	CM@R	KBA/Trident	Finegold Alexander and Associates Inc.	Consigli Construction Company, Inc.	Environmental Health and Engineering
201501820011	Middleborough	Memorial Early Childhood Center	Closeout	Accelerated Repair	Roof		Architectural Consulting Group, LLC	Knight, Bagge & Anderson, Inc.	MDM Engineering	Russo Barr Associates, Inc.
201401820505	Middleborough	Middleborough High	Schematic Design	Core Program			Compass Project Management, Inc.	Drummeir Rosane Anderson, Inc.	-	-
201401840003	Middleton	Fuller Meadow	Final Audit Approved	Accelerated Repair	Roof		Hill International Company	CBI Consulting Inc.	-	Building Enclosure Associates, LLC
201101850090	Milford	Woodland	Building Complete	Core Program	New Construction	CM@R	NV5 (fka Joslin, Lesser + Associates Inc.)	HMFH Architects, Inc.	Shawmut Design and Construction	Consulting Engineering Services, LLC
201601860025	Millbury	Raymond E. Shaw Elementary	Eligibility Period	Core Program			-	-	-	-
201401870005	Millis	Clyde F Brown	Approved Project Vote Pending	Core Program	New Construction		Compass Project Management, Inc.	Tappe Associates, Inc.	-	-
200908300605	Minuteman Voc Tech	Minuteman Regional High School	Design Development	Core Program	New Construction		Skanska USA Building, Inc	Kaestle Boos Associates, Inc.	-	Bard, Rao + Athanas Consulting Engineers, LLC
201107129999	Monomoy	Monomoy Regional High School	Closeout	Core Program	New Construction - Model School	DBB	Skanska USA Building, Inc	Mount Vernon Group Architects, Inc.	Fontaine Brothers, Inc.	Sebesta Blomberg & Associates, Inc.
201307150505	Mount Greylock	Mt Greylock Reg High	Construction	Core Program	Addition / Renovation	CM@R	Dore & Whittier Management Partners, Inc.	Perkins Eastman/DPC	Turner Construction Company	BVH Integrated Services, P.C.
200807200020	Narragansett	Templeton Center School	Design Development	Core Program			Colliers International	Symmes Maini & McKee Associates, Inc.	-	Fitzmeyer & Tocci Associates, Inc.
200807250015	Nashoba	Pompsitticut Elementary School	Final Audit Approved	Core Program	Addition / Renovation	DBB	Construction Monitoring Services, Inc.	Symmes Maini & McKee Associates, Inc.	P.J. Stella Construction Corp.	Colliers International
201501980305	Natick	J F Kennedy Middle Sch	Feasibility Study	Core Program			Compass Project Management, Inc.	-	-	-
201606600505	Nauset	Nauset Regional High	Eligibility Period	Core Program			-	-	-	-
201301990035	Needham	Hillside Elementary	Design Development	Core Program	New Construction	DBB	-	Dore & Whittier Architects, Inc.	-	Rist-Frost-Shumway Engineering, P.C.
201502010063	New Bedford	Alfred J Gomes	Construction	Accelerated Repair	Windows / Doors		Vertex Construction Services	-	-	CBI Consulting Inc.
201502010123	New Bedford	Casmir Pulaski	Construction	Accelerated Repair	Windows / Doors, Boiler		Vertex Construction Services	-	-	CBI Consulting Inc.   WSP USA
201702010015	New Bedford	Elizabeth Carter Brooks	OPM Selection	Accelerated Repair	Windows / Doors, Boiler		-	-	-	-
201502010078	New Bedford	Hayden/McFadden	Construction	Accelerated Repair	Windows / Doors, Boiler		Vertex Construction Services	-	-	CBI Consulting Inc.   WSP USA
201502010115	New Bedford	John Avery Parker	Closeout	Accelerated Repair	Windows / Doors, Boiler		Vertex Construction Services	-	-	-
201602010115	New Bedford	John Avery Parker	Approved Project Vote Pending	Accelerated Repair	Windows / Doors		Architectural Consulting Group, LLC	CBI Consulting Inc.	-	WSP USA
200902010070	New Bedford	John Hannigan	Construction	Core Program	New Construction	DBB	Daedalus Projects Inc	Turowski2 Architecture, Inc.	H.V. Collins Co., Inc.	WSP USA
201502010045	New Bedford	Sgt Wm H Carney Acad	Construction	Accelerated Repair	Windows / Doors		Vertex Construction Services	-	-	CBI Consulting Inc.   WSP USA

Date of Report: 6/7/2017

Total Projects: 367

MSBA ID	District	School	Project Phase	Project Type	Project Scope	Procurement Type	OPM	Designer	CM/GC	Commissioning Consultant
W201002019999 P2	New Bedford	Taylor School at the Sea Lab Marine Science Education Center	Building Complete	Waitlist	Addition / Renovation	DBB	Architectural Consulting Group, LLC	Mount Vernon Group Architects, Inc.	M. O'Connor Contracting, Inc.	WSP USA
201102040005	Newburyport	Francis T Bresnahan Elem	Final Audit Approved	Core Program	New Construction - Model School	DBB	HEERY	HMFH Architects, Inc.	CTA Construction Co., Inc.	Fitzmeyer & Tocci Associates, Inc.
201002040305	Newburyport	Rupert A. Nock Middle School	Final Audit Approved	Core Program	Addition / Renovation	CM@R	HEERY	Miller Dyer Spears Inc.	Gilbane Building Company	Fitzmeyer & Tocci Associates, Inc.
201102070005	Newton	A E Angier	Building Complete	Core Program	New Construction	CM@R	NV5 (fka Joslin, Lesser + Associates Inc.)	DiNisco Design, Inc.	W. T. Rich Company Inc.	Fitzmeyer & Tocci Associates, Inc.
201302070025	Newton	Cabot	Design Development	Core Program	Addition / Renovation	CM@R	NV5 (fka Joslin, Lesser + Associates Inc.)	DiNisco Design, Inc.	W. T. Rich Company Inc.	Colliers International
200802080005	Norfolk	Freeman-Kennedy Elementary School	Closeout	Core Program	New Construction	DBB	NV5 (fka Joslin, Lesser + Associates Inc.)	Flansburgh Associates, Inc.	Fontaine Brothers, Inc.	WSP USA
200909150705	Norfolk County Agriculture	Norfolk County Agr	Final Audit Approved	Core Program	Addition / Renovation	DBB	Compass Project Management, Inc.	Turovski2 Architecture, Inc.	Brait Builders Corp.	Rist-Frost-Shumway Engineering, P.C.
200802090305	North Adams	Silvio O Conte Middle School	Closeout	Core Program	Addition / Renovation	DBB	Colliers International	Jones Whitsett Architects, Inc.	PDS Engineering and Construction, Inc.	Rist-Frost-Shumway Engineering, P.C.
201402120015	North Attleborough	Roosevelt Avenue	Final Audit Approved	Accelerated Repair	Boiler		Pinck & Co., Inc.	Consulting Engineering Services, LLC	Falite Brothers Inc.	Bard, Rao + Athanas Consulting Engineers, LLC
201602150015	North Brookfield	North Brookfield Elem	Design Development	Accelerated Repair	Roof		Skanska USA Building, Inc	Dietz & Company Architects, Inc.	-	Simpson Gumpertz & Heger Inc.
201607350030	North Middlesex	Hawthorne Brook	Approved Project Vote Pending	Accelerated Repair			Atlantic Construction and Management, Inc.	Habeeb & Associates Architects, Inc.	-	Gale Associates, Inc.
201107350505	North Middlesex	North Middlesex Reg	Construction	Core Program	New Construction	DBB	HEERY	Symmes Maini & McKee Associates, Inc.	CTA Construction Co., Inc.	Horizon Engineering Associates, LLP
201607350020	North Middlesex	Squannacook	Approved Project Vote Pending	Accelerated Repair			Atlantic Construction and Management, Inc.	Habeeb & Associates Architects, Inc.	-	Gale Associates, Inc.
201607350035	North Middlesex	Varnum Brook	Approved Project Vote Pending	Accelerated Repair			Atlantic Construction and Management, Inc.	Habeeb & Associates Architects, Inc.	-	Gale Associates, Inc.
201502170003	North Reading	E Ethel Little School	Closeout	Accelerated Repair	Roof		Compass Project Management, Inc.	HAKS Engineers, P.C.	Stanley Roofing Company, Inc.	Thompson & Lichtner Co., Inc.
201002170505	North Reading	North Reading High School	Building Complete	Core Program	Addition / Renovation	CM@R	PMA Construction Services	Core & Whittier Architects, Inc.	Gilbane Building Company	Cannon Design
201602100005	Northampton	Bridge Street	Design Development	Accelerated Repair	Roof		Colliers International	The S/L/A/M Collaborative	-	CBI Consulting Inc.
201402100025	Northampton	Leeds	Final Audit Approved	Accelerated Repair	Roof		STV   DPM (fka STV Inc.)	Raymond Design Associates, Inc.	R & H Roofing, LLP	Russo Barr Associates, Inc.
201602100025	Northampton	Leeds	Design Development	Accelerated Repair	Roof		Colliers International	The S/L/A/M Collaborative	-	CBI Consulting Inc.
201402100029	Northampton	R. K. Finn Ryan Road	Final Audit Approved	Accelerated Repair	Roof		STV   DPM (fka STV Inc.)	Raymond Design Associates, Inc.	R & H Roofing, LLP	Russo Barr Associates, Inc.
201102130003	Northborough	Lincoln Street	Building Complete	Core Program	Addition / Renovation	DBB	Colliers International	Lamoureux Pagano & Associates, Inc.	Brait Builders Corp.	Fitzmeyer & Tocci Associates, Inc.
201502140001	Northbridge	W Edward Balmer	OPM Selection	Core Program			Symmes Maini & McKee Associates, Inc.	-	-	-
201702180060	Norton	Henri A. Yelle	OPM Selection	Accelerated Repair	Windows / Doors		-	-	-	-
201702180015	Norton	J C Solmonese	OPM Selection	Accelerated Repair	Windows / Doors		-	-	-	-
201702180010	Norton	L G Nourse Elementary	OPM Selection	Accelerated Repair	Windows / Doors		-	-	-	-
200902180505	Norton	Norton High School	Final Audit Approved	Core Program	Addition / Renovation	CM@R	Pinck & Co., Inc.	JCJ Architecture, PC	W. T. Rich Company Inc.	Rist-Frost-Shumway Engineering, P.C.
201402200010	Norwood	Cornelius M Callahan	Final Audit Approved	Accelerated Repair	Boiler		PMA Construction Services	Consulting Engineering Services, LLC	George T. Wilkinson, Inc.	Symmes, Maini & McKee Associates
201602230010	Orange	Dexter Park	Eligibility Period				-	-	-	-
201402240005	Orleans	Orleans Elementary	Closeout	Accelerated Repair	Windows / Doors		Architectural Consulting Group, LLC	Tighe & Bond, Inc.	RAC Builders, Inc.	Gale Associates, Inc.
200802260405	Oxford	Oxford Middle School	Closeout	Core Program	Repair	DBB	Diversified Project Management	CGKV Architects, Inc.	J.J. Cardosi, Inc.	Cannon Design
201308600605	Pathfinder Voc Tech	Pathfinder Voc Tech	Final Audit Approved	Accelerated Repair	Roof	DBB	exPERToon, Inc.	Baker/Wohl Architects, Inc.	Allied Restoration Corporation	Building Enclosure Associates, LLC
200802290305	Peabody	Higgins Middle School	Building Complete	Core Program	New Construction	DBB	Daedalus Projects Inc	DiNisco Design, Inc.	Bacon-Agostini Construction Joint Venture	BVH Integrated Services, P.C.
201402290016	Peabody	John E. McCarthy	Building Complete	Accelerated Repair	Roof, Windows / Doors		Hill International Company	Civictects PC	-	Thompson & Lichtner Co., Inc.
201502290510	Peabody	Peabody Veterans Memorial High	Construction	Accelerated Repair	Roof		Municipal Building Consultants, Inc.	Civictects PC	-	Thompson & Lichtner Co., Inc.
201302310010	Pembroke	Hobomock Elementary	Closeout	Accelerated Repair	Roof	DBB	Pinck & Co., Inc.	The S/L/A/M Collaborative	Greenwood Industries, Inc.	CBI Consulting Inc.
201302310015	Pembroke	North Pembroke Elem	Closeout	Accelerated Repair	Roof	DBB	Pinck & Co., Inc.	The S/L/A/M Collaborative	Paul J. Rogan Co., Inc.	CBI Consulting Inc.
201302310305	Pembroke	Pembroke Community Middle School	Closeout	Accelerated Repair	Roof	DBB	Pinck & Co., Inc.	The S/L/A/M Collaborative	Paul J. Rogan Co., Inc.	CBI Consulting Inc.
201302310505	Pembroke	Pembroke High School	Closeout	Accelerated Repair	Roof	DBB	Pinck & Co., Inc.	The S/L/A/M Collaborative	Greenwood Industries, Inc.	CBI Consulting Inc.
201507450505	Pentucket	Pentucket Reg Sr High	Designer Selection	Core Program			Vertex Construction Services	-	-	-
201002360510	Pittsfield	Taconic High School	Construction	Core Program	New Construction	CM@R	Skanska USA Building, Inc	Drumme Rosane Anderson, Inc.	Gilbane Building Company	Colliers International
201202390515	Plymouth	Plymouth South High	Construction	Core Program	New Construction	DBB	Ted Gentry Associates, Inc	Ai3 Architects LLC	Bacon-Agostini Construction Joint Venture	Rist-Frost-Shumway Engineering, P.C.
201302420505	Provincetown	Provincetown High	Building Complete	Core Program	Repair	DBB	Atlantic Construction and Management, Inc.	Raymond Design Associates, Inc.	E. Amanti & Sons, Inc.	BVH Integrated Services, P.C.
201607780005	Quaboag Regional	Warren Elementary	Approved Project Vote Pending	Accelerated Repair	Windows / Doors		NETCO Construction Project Managers, Inc.	TSKP Studio, LLC	-	-
201602430040	Quincy	Atherton Hough	Design Development	Accelerated Repair	Boiler		Hill International Company	Architectural Engineers, Inc.	-	Consulting Engineering Services, LLC
201502430020	Quincy	Beechwood Knoll Elem	Construction	Accelerated Repair	Roof, Windows / Doors		Atlantic Construction and Management, Inc.	Baker/Wohl Architects, Inc.	Alpha Contracting Associates, Inc.	CBI Consulting Inc.
201602430020	Quincy	Beechwood Knoll Elem	Design Development	Accelerated Repair	Boiler		Hill International Company	Architectural Engineers, Inc.	-	Consulting Engineering Services, LLC

Date of Report: 6/7/2017  
 Total Projects: 367

MSBA ID	District	School	Project Phase	Project Type	Project Scope	Procurement Type	OPM	Designer	CM/GC	Commissioning Consultant
201402430075	Quincy	Francis W Parker	Final Audit Approved	Accelerated Repair	Windows / Doors		PMA Construction Services	Russo Barr Associates, Inc.	Lockheed Window Corporations	Simpson Gumpertz & Heger Inc.
201402430035	Quincy	Lincoln-Hancock Comm Sch	Final Audit Approved	Accelerated Repair	Windows / Doors		PMA Construction Services	Russo Barr Associates, Inc.	Lockheed Window Corporations	Simpson Gumpertz & Heger Inc.
201302430060	Quincy	Merrymount	Final Audit Approved	Accelerated Repair	Windows / Doors	DBB	Skanska USA Building, Inc	Habeeb & Associates Architects, Inc.	Alpha Contracting Associates, Inc.	Simpson Gumpertz & Heger Inc.
201502430060	Quincy	Merrymount	Building Complete	Accelerated Repair	Roof		Atlantic Construction and Management, Inc.	Baker/Wohl Architects, Inc.	Gibson Roofs, Inc.	CBI Consulting Inc.
201602430060	Quincy	Merrymount	Design Development	Accelerated Repair	Boiler		Hill International Company	Architectural Engineers, Inc.	-	Consulting Engineering Services, LLC
201302430510	Quincy	North Quincy High	Final Audit Approved	Accelerated Repair	Windows / Doors	DBB	Skanska USA Building, Inc	Habeeb & Associates Architects, Inc.	GVW, Inc.	Simpson Gumpertz & Heger Inc.
201702430510	Quincy	North Quincy High	OPM Selection	Accelerated Repair	Roof		-	-	-	-
201302430320	Quincy	Reay E Sterling Middle	Design Development	Core Program	New Construction		PCA 360	Ai3 Architects LLC	-	Symmes, Maini & McKee Associates
201302430110	Quincy	Wollaston School	Final Audit Approved	Accelerated Repair	Windows / Doors	DBB	Skanska USA Building, Inc	Habeeb & Associates Architects, Inc.	Northeast Energy Control Systems	Simpson Gumpertz & Heger Inc.
201602430110	Quincy	Wollaston School	Design Development	Accelerated Repair	Boiler		Hill International Company	Architectural Engineers, Inc.	-	Consulting Engineering Services, LLC
201402440018	Randolph	J F Kennedy Elem	Closeout	Accelerated Repair	Windows / Doors		STV   DPM (fka STV Inc.)	Taylor & Burns, Inc.	Modern Glass & Aluminum, Inc.	Gale Associates, Inc.
201702440015	Randolph	Margaret L Donovan	OPM Selection	Accelerated Repair	Windows / Doors, Boiler		-	-	-	-
201702440040	Randolph	Martin E Young Elem	OPM Selection	Accelerated Repair	Windows / Doors		-	-	-	-
201402440505	Randolph	Randolph High	Closeout	Accelerated Repair	Windows / Doors		STV   DPM (fka STV Inc.)	Taylor & Burns, Inc.	A&A Window Products, Inc.	Gale Associates, Inc.
201502480056	Revere	Garfield Elementary School	Construction	Accelerated Repair	Roof		Leftfield, LLC	Turoski2 Architecture, Inc.	Greenwood Industries, Inc.	Thompson & Lichtner Co., Inc.
201602480057	Revere	Garfield Middle School	Design Development	Accelerated Repair	Boiler		-	-	-	Fitzmeyer & Tocci Associates, Inc.
201002480035	Revere	Staff Sergeant James J. Hill School	Building Complete	Core Program	New Construction	DBB	Hill International Company	Drummev Rosane Anderson, Inc.	CTA Construction Co., Inc.	Rist-Frost-Shurway Engineering, P.C.
201602510060	Rockland	Jefferson Elementary School	Eligibility Period	Core Program			-	-	-	-
200902580305G	Salem	Collins Middle School	Closeout	Green Repair	Roof, Windows / Doors, Boiler, Building Envelope	CM@R	KV Associates, Inc.	Reinhardt Associates, Inc.	Gilbane Building Company	Rist-Frost-Shurway Engineering, P.C.
201002580050G	Salem	Saltonstall School	Closeout	Green Repair	Roof, Windows / Doors, Boiler, Building Envelope	CM@R	KV Associates, Inc.	Reinhardt Associates, Inc.	Gilbane Building Company	Rist-Frost-Shurway Engineering, P.C.
201002620305	Saugus	Belmonte Middle School	Final Audit Approved	Core Program	Repair	CM@R	Skanska USA Building, Inc	Fletcher Thompson Architecture Engineering, LLC	Consigli Construction Company, Inc.	Consulting Engineering Services, LLC
201402620505	Saugus	Saugus High	Schematic Design	Core Program	New Construction		PMA Construction Services	HMFH Architects, Inc.	-	-
201202640305	Scituate	Gates Intermediate School	Construction	Core Program	New Construction	DBB	Daedalus Projects Inc	Dore & Whittier Architects, Inc.	Bacon-Agostini Construction Joint Venture	WSP USA
201702650015	Seekonk	Mildred Aitken School	OPM Selection	Accelerated Repair	Windows / Doors		-	-	-	-
201602660015	Sharon	Heights Elementary	Design Development	Accelerated Repair	Roof		PCA 360	Knight, Bagge & Anderson, Inc.	-	Simpson Gumpertz & Heger Inc.
201602660505	Sharon	Sharon High	Eligibility Period	Core Program			-	-	-	-
201502710005	Shrewsbury	Beal School	Designer Selection	Core Program			-	-	-	-
200802710305	Shrewsbury	Sherwood Middle School	Closeout	Core Program	New Construction	CM@R	PMA Construction Services	Lamoureux Pagano & Associates, Inc.	Gilbane Building Company	RDK Engineers
20081119999	Somerset-Berkley	Somerset-Berkley High	Closeout	Core Program	New Construction - Model School	DBB	Skanska USA Building, Inc	Ai3 Architects LLC	Bacon-Agostini Construction Joint Venture	Horizon Engineering Associates, LLP
200902740111E	Somerville	East Somerville Community School at Cummings	Closeout	Core Program	Renovation	CM@R	PMA Construction Services	Maguire Group Inc.	Gilbane Building Company	Foreman Building Commissioning, LP
201302740505	Somerville	Somerville High	Design Development	Core Program	Addition / Renovation		PMA Construction Services	Symmes Maini & McKee Associates, Inc.	-	WSP USA
201602740120	Somerville	Winter Hill Community	Schematic Design	Accelerated Repair	Roof, Windows / Doors		Municipal Building Consultants, Inc.	TSKP Studio, LLC	-	Thompson & Lichtner Co., Inc.
200902780015	South Hadley	Plains School	Closeout	Core Program	New Construction	DBB	Arcadis U.S., Inc.	Jones Whitsett Architects, Inc.	Fontaine Brothers, Inc.	Colliers International
201408730605	South Shore Reg Voc Tech	So Shore Voc Tech High	Final Audit Approved	Accelerated Repair	Boiler		exPERTcon, Inc.	Richard D. Kimball Company, Inc.	-	Consulting Engineering Services, LLC
201407650505	Southern Berkshire	Mt Everett Regional	Closeout	Accelerated Repair	Roof, Boiler		NETCO Construction Project Managers, Inc.	Dietz & Company Architects, Inc.	Titan Roofing, Inc.	Colliers International
200908760605	Southern Worcester Cty VT	Bay Path Regional Vocational Technical High School	Closeout	Core Program	Addition / Renovation	CM@R	HEERY	Kaestle Boos Associates, Inc.	Consigli Construction Company, Inc.	RDK Engineers
201107660305	Southwick-Tolland	Powder Mill	Closeout	Core Program	Repair	DBB	Colliers International	JCJ Architecture, PC	PDS Engineering and Construction, Inc.	BVH Integrated Services, P.C.
201107660505	Southwick-Tolland	Southwick-Tolland Regional High	Closeout	Core Program	Addition / Renovation	DBB	Colliers International	JCJ Architecture, PC	Fontaine Brothers, Inc.	BVH Integrated Services, P.C.
200807660010	Southwick-Tolland	Woodland Elementary School	Closeout	Core Program	Addition / Renovation	DBB	Colliers International	JCJ Architecture, PC	PDS Engineering and Construction, Inc.	BVH Integrated Services, P.C.
201602810095	Springfield	Alfred G Zanetti	Design Development	Accelerated Repair	Windows / Doors		Leftfield, LLC	Gale Associates, Inc.	-	Building Enclosure Associates, LLC
201602810015	Springfield	Balliet Elementary School	Design Development	Accelerated Repair	Roof		Leftfield, LLC	Gale Associates, Inc.	-	Building Enclosure Associates, LLC
201602810360	Springfield	Balliet Middle School	Design Development	Accelerated Repair	Windows / Doors		Leftfield, LLC	Gale Associates, Inc.	-	Building Enclosure Associates, LLC
201502810025	Springfield	Brightwood	OPM Selection	Core Program			-	-	-	-
201302810310	Springfield	Chestnut Accelerated Middle School	Final Audit Approved	Accelerated Repair	Roof	DBB	Atlantic Construction and Management, Inc.	CBI Consulting Inc.	J.D. Rivet & Co., Inc.	Building Enclosure Associates, LLC
201502810035	Springfield	Daniel B Brunton	Construction	Accelerated Repair	Windows / Doors		Skanska USA Building, Inc	CBI Consulting Inc.	Five Star Building Corp.	Building Enclosure Associates, LLC

Date of Report: 6/7/2017  
 Total Projects: 367

MSBA ID	District	School	Project Phase	Project Type	Project Scope	Procurement Type	OPM	Designer	CM/GC	Commissioning Consultant
201102810030E	Springfield	Elias Brookings	Closeout	Core Program	New Construction	CM@R	Arcadis U.S., Inc.	Drumme Rosane Anderson, Inc.	Morganti/Aquadro & Cerruti	BVH Integrated Services, P.C.
201302810530	Springfield	High School/Science-Tech	Final Audit Approved	Accelerated Repair	Roof	DBB	Atlantic Construction and Management, Inc.	CBI Consulting Inc.	Kronenberger & Sons Restoration, Inc.	Building Enclosure Associates, LLC
201402810328	Springfield	John F Kennedy Middle	Closeout	Accelerated Repair	Windows / Doors		Arcadis U.S., Inc.	Gale Associates, Inc.	Lambrian Construction Corp.	Building Enclosure Associates, LLC
201402810110	Springfield	Kensington Avenue	Closeout	Accelerated Repair	Windows / Doors		Arcadis U.S., Inc.	Gale Associates, Inc.	Alpha Contracting Associates, Inc.	Building Enclosure Associates, LLC
201602810110	Springfield	Kensington Avenue	Design Development	Accelerated Repair	Roof		Leftfield, LLC	Gale Associates, Inc.	-	Building Enclosure Associates, LLC
201602810330	Springfield	M Marcus Kiley Middle	Design Development	Accelerated Repair	Windows / Doors		Leftfield, LLC	Gale Associates, Inc.	-	Building Enclosure Associates, LLC
201302810060	Springfield	Margaret C Eills	Final Audit Approved	Accelerated Repair	Roof	DBB	Atlantic Construction and Management, Inc.	CBI Consulting Inc.	Allied Restoration Corporation	Building Enclosure Associates, LLC
201602810140	Springfield	Mary M Lynch	Design Development	Accelerated Repair	Roof		Leftfield, LLC	Gale Associates, Inc.	-	Building Enclosure Associates, LLC
201502810155	Springfield	Mary M Walsh	Construction	Accelerated Repair	Windows / Doors		Skanska USA Building, Inc	CBI Consulting Inc.	PDS Engineering and Construction, Inc.	Building Enclosure Associates, LLC
201302810355	Springfield	South End Middle School	Final Audit Approved	Accelerated Repair	Roof	DBB	Atlantic Construction and Management, Inc.	CBI Consulting Inc.	Titan Roofing, Inc.	Building Enclosure Associates, LLC
201202810500	Springfield	Springfield Central High	Final Audit Approved	Science Lab Initiative	Addition / Renovation	CM@R	Leftfield, LLC	DiNisco Design, Inc.	Morganti/Aquadro & Cerruti	Horizon Engineering Associates, LLP
201302810550	Springfield	Springfield Public Day High School	Final Audit Approved	Accelerated Repair	Roof	DBB	Atlantic Construction and Management, Inc.	CBI Consulting Inc.	-	Building Enclosure Associates, LLC
201502810550	Springfield	Springfield Public Day High School	Construction	Accelerated Repair	Windows / Doors		Skanska USA Building, Inc	CBI Consulting Inc.	Westfield Construction Co., Inc.	Building Enclosure Associates, LLC
201502810350	Springfield	STEM Middle Academy	Construction	Accelerated Repair	Roof		Skanska USA Building, Inc	CBI Consulting Inc.	Westfield Construction Co., Inc.	Building Enclosure Associates, LLC
201602810045	Springfield	William N Deberry	Eligibility Period				-	-	-	-
200902840405	Stoneham	Stoneham Middle School	Final Audit Approved	Core Program	Addition / Renovation	CM@R	NV5 (fka Joslin, Lesser + Associates Inc.)	Tappe Associates, Inc.	Shawmut Design and Construction	RDk Engineers
201302850010	Stoughton	Helen Hansen Elementary	Final Audit Approved	Accelerated Repair	Windows / Doors	DBB	Hill International Company	Russo Barr Associates, Inc.	Lockheed Window Corporations	Building Enclosure Associates, LLC
201402850025	Stoughton	Joseph H Gibbons	Building Complete	Accelerated Repair	Roof, Windows / Doors		Atlantic Construction and Management, Inc.	CGKV Architects, Inc.	A&A Window Products, Inc.	Building Enclosure Associates, LLC
201302850014	Stoughton	Joseph R Dawe Jr Elem	Final Audit Approved	Accelerated Repair	Windows / Doors	DBB	Hill International Company	Russo Barr Associates, Inc.	Lockheed Window Corporations	Building Enclosure Associates, LLC
201302850505	Stoughton	Stoughton High	Design Development	Core Program	New Construction	CM@R	Compass Project Management, Inc.	Drumme Rosane Anderson, Inc.	Consigli Construction Company, Inc.	Fitzmeyer & Tocci Associates, Inc.
201502850020	Stoughton	West Elementary	Construction	Accelerated Repair	Windows / Doors		Compass Project Management, Inc.	CBI Consulting Inc.	Alpha Contracting Associates, Inc.	Building Enclosure Associates, LLC
200802900305	Sutton	Sutton Middle School	Final Audit Approved	Core Program	Addition / Renovation	DBB	Colliers International	Flansburgh Associates, Inc.	Brait Builders Corp.	RDk Engineers
201602920006	Swansea	Elizabeth S Brown	Approved Project Vote Pending	Accelerated Repair	Windows / Doors		Skanska USA Building, Inc	Tighe & Bond, Inc.	-	Simpson Gumpertz & Heger Inc.
201502930007	Taunton	Edmund Hatch Bennett	Construction	Accelerated Repair	Roof, Windows / Doors		Arcadis U.S., Inc.	CSS Architects Incorporated	TRAC Builders, Inc.	Gale Associates, Inc.
201502930042	Taunton	Joseph H Martin	Construction	Accelerated Repair	Roof, Windows / Doors		Arcadis U.S., Inc.	CSS Architects Incorporated	TRAC Builders, Inc.	Gale Associates, Inc.
201402930015	Taunton	Mulcahey Elementary School	Feasibility Study	Core Program			CGA Project Management	Dore & Whittier Architects, Inc.	-	-
201502950025	Tewksbury	Louise Davy Trahan	OPM Selection	Core Program			-	-	-	-
200802950505	Tewksbury	Tewksbury Memorial High School	Closeout	Core Program	New Construction - Model School	DBB	HEERY	Symmes Maini & McKee Associates, Inc.	CTA Ventures	Sebesta Blomberg & Associates, Inc.
201502960005	Tisbury	Tisbury Elementary	Feasibility Study	Core Program			Daedalus Projects Inc	Turowski2 Architecture, Inc.	-	-
201602980005	Topsfield	Proctor Elementary	Design Development	Accelerated Repair	Roof		Compass Project Management, Inc.	The S/L/A/M Collaborative	-	Gale Associates, Inc.
201602980010	Topsfield	Steward Elementary	Design Development	Accelerated Repair	Roof		Compass Project Management, Inc.	The S/L/A/M Collaborative	-	Gale Associates, Inc.
201408780605	Tri County	Tri County Reg Voc Tech	Final Audit Approved	Accelerated Repair	Boiler		Colliers International	Shekar & Associates, Inc.	-	Fitzmeyer & Tocci Associates, Inc.
201507730025	Triton	Pine Grove	Schematic Design	Core Program	Addition / Renovation		Pinck & Co., Inc.	Dore & Whittier Architects, Inc.	-	-
201403010505	Tyngsborough	Tyngsborough High School	Closeout	Accelerated Repair	Roof, Boiler		Municipal Building Consultants, Inc.	CSS Architects Incorporated	Ambient Temperature Corporation  Greenwood Industries, Inc.	Colliers International
200907750305	Wachusett	Mountview Middle School	Building Complete	Core Program	New Construction	DBB	Town Employee	Lamoureux Pagano & Associates, Inc.	CTA Construction Co., Inc.	Fitzmeyer & Tocci Associates, Inc.
201003050310	Wakefield	Galvin Middle School	Closeout	Core Program	New Construction	CM@R	NV5 (fka Joslin, Lesser + Associates Inc.)	Tappe Associates, Inc.	Bond Brothers, Inc.	B2Q Associates, Inc.
201403080505	Waltham	Waltham High School	Feasibility Study	Core Program			NV5 (fka Joslin, Lesser + Associates Inc.)	Symmes Maini & McKee Associates, Inc.	-	-
201503100003	Wareham	John W. Decas Elementary School	Construction	Accelerated Repair	Roof, Boiler		Colliers International	ICON architecture, inc.	Nadeau Corporation	Bard, Rao + Athanas Consulting Engineers, LLC   Gale Associates, Inc.
201503100017	Wareham	Minot Forest	OPM Selection	Core Program			-	-	-	-
201503140305	Watertown	Watertown Middle	Design Development	Accelerated Repair	Windows / Doors		exPERTcon, Inc.	Gale Associates, Inc.	-	Thompson & Lichtner Co., Inc.
201403150005	Wayland	Claypit Hill School	Closeout	Accelerated Repair	Windows / Doors		Pinck & Co., Inc.	CGKV Architects, Inc.	Lockheed Window Corporations	Russo Barr Associates, Inc.
201603150020	Wayland	Loker School	Approved Project Vote Pending	Accelerated Repair	Windows / Doors		Colliers International	CBI Consulting Inc.	-	Thompson & Lichtner Co., Inc.
200903160015	Webster	Park Avenue Elementary School	Closeout	Core Program	New Construction	DBB	Hill International Company	Dore & Whittier Architects, Inc.	CTA Construction Co., Inc.	Cannon Design
201403170305	Wellesley	Wellesley Middle	Closeout	Accelerated Repair	Windows / Doors		Arcadis U.S., Inc.	CSS Architects Incorporated	Paul J. Rogan Co., Inc.	Gale Associates, Inc.

Date of Report: 6/7/2017  
 Total Projects: 367

MSBA ID	District	School	Project Phase	Project Type	Project Scope	Procurement Type	OPM	Designer	CM/GC	Commissioning Consultant
200803170505	Wellesley	Wellesley Senior School	Final Audit Approved	Core Program	New Construction	CM@R	-	Symmes Maini & McKee Associates, Inc.	-	Rist-Frost-Shumway Engineering, P.C.
201303180005	Wellesley	Wellesley Elementary	Final Audit Approved	Accelerated Repair	Roof	DBB	Architectural Consulting Group, LLC	CSS Architects Incorporated	DDC Construction Inc.	Russo Barr Associates, Inc.
201103220005G	West Boylston	Major Edwards Elementary	Closeout	Green Repair	Windows / Doors	DBB	URS Corporation	Reinhardt Associates, Inc.	-	Cannon Design
201503230005	West Bridgewater	Spring Street School	Closeout	Accelerated Repair	Roof	-	PCA 360	TSKP Studio, LLC	Capeway Roofing Systems, Inc.	Thompson & Lichtner Co., Inc.
201003230505	West Bridgewater	West Bridgewater Middle-Senior High School	Building Complete	Core Program	New Construction	DBB	Colliers International	Flansburgh Associates, Inc.	CTA Construction Co., Inc.	Cannon Design
201503320007	West Springfield	Philip G Coburn	OPM Selection	Core Program	-	-	-	-	-	-
200903320505	West Springfield	West Springfield High School	Closeout	Core Program	New Construction - Model School	DBB	Colliers International	Symmes Maini & McKee Associates, Inc.	Fontaine Brothers, Inc.	Turner Facilities Management Solutions
201603210010	Westborough	Annie E Fales	Eligibility Period	Core Program	-	-	-	-	-	-
200903210305	Westborough	Gibbons Middle School	Construction	Core Program	Repair	CM@R	HEERY	Habeeb & Associates Architects, Inc.	Gilbane Building Company	BVH Integrated Services, P.C.
200903250020	Westfield	Abner Gibbs Elementary School	Construction	Core Program	New Construction - Model School	DBB	Skanska USA Building, Inc	Jones Whitsett Architects, Inc.	Fontaine Brothers, Inc.	Horizon Engineering Associates, LLP
201703260004	Westford	Abbot Elem	OPM Selection	Accelerated Repair	Roof	-	-	-	-	-
201303260025	Westford	Col John Robinson	Closeout	Accelerated Repair	Windows / Doors	DBB	Colliers International	Gale Associates, Inc.	GTC Construction Management	CBI Consulting Inc.
201303260007	Westford	Day Elementary	Closeout	Accelerated Repair	Windows / Doors	DBB	Colliers International	Gale Associates, Inc.	J.J. Cardosi, Inc.	CBI Consulting Inc.
200903300012	Weston	Field Elementary School	Final Audit Approved	Core Program	New Construction	DBB	Compass Project Management, Inc.	Jonathan Levi Architects LLC	Colantonio, Inc.	Foreman Building Commissioning, LP
201403310305	Westport	Westport Middle	Schematic Design	Core Program	New Construction	-	Daedalus Projects Inc	Jonathan Levi Architects LLC	-	-
201503360020	Weymouth	Maria Weston Chapman Middle School	Feasibility Study	Core Program	-	-	Hill International Company	-	-	-
201703360105	Weymouth	Thomas W. Hamilton Primary School	OPM Selection	Accelerated Repair	Boiler	-	-	-	-	-
201703360110	Weymouth	Wessagusset	OPM Selection	Accelerated Repair	Boiler	-	-	-	-	-
200803400005	Williamsburg	Anne T. Dunphy School	Final Audit Approved	Core Program	Addition / Renovation	DBB	Arcadis U.S., Inc.	Drumrey Rosane Anderson, Inc.	Enfield Builders, Inc.	B2Q Associates, Inc.
200903420505	Wilmington	Wilmington High School	Building Complete	Core Program	New Construction	CM@R	NV5 (Ika Joslin, Lesser + Associates Inc.)	Dore & Whittier Architects, Inc.	Gilbane Building Company	Symmes, Maini & McKee Associates
201003440505	Winchester	Winchester High School	Construction	Core Program	Addition / Renovation	CM@R	Skanska USA Building, Inc	Symmes Maini & McKee Associates, Inc.	Consigli Construction Company, Inc.	RDK Engineers
200803460505	Winthrop	Winthrop High School	Closeout	Core Program	New Construction	CM@R	Skanska USA Building, Inc	HMFH Architects, Inc.	Gilbane Building Company	WSP USA
201203470060	Woburn	Wyman	Construction	Core Program	New Construction	-	Municipal Building Consultants, Inc.	DiNisco Design, Inc.	CTA Construction Co., Inc.	Fitzmeyer & Tocci Associates, Inc.
201603480020	Worcester	Belmont Street Community	Design Development	Accelerated Repair	Windows / Doors	-	Watermark Environmental, Inc.	Tighe & Bond, Inc.	-	Russo Barr Associates, Inc.
201603480050	Worcester	Chandler Elem Community	Design Development	Accelerated Repair	Windows / Doors, Boiler	-	Watermark Environmental, Inc.	Tighe & Bond, Inc.	-	BVH Integrated Services, P.C.   Russo Barr Associates, Inc.
201403480055	Worcester	Clark St Community	Final Audit Approved	Accelerated Repair	Windows / Doors	-	Architectural Consulting Group, LLC	ICON architecture, inc.	J.J. Cardosi, Inc.	Russo Barr Associates, Inc.
201303480060	Worcester	Columbus Park	Closeout	Accelerated Repair	Windows / Doors, Boiler	DBB	Architectural Consulting Group, LLC	The S/LA/M Collaborative	Contractor's Network, Inc.	RDK Engineers   Russo Barr Associates, Inc.
201603480512	Worcester	Doherty Memorial High	Eligibility Period	Core Program	-	-	-	-	-	-
201503480090	Worcester	Flagg Street	Construction	Accelerated Repair	Windows / Doors	-	Arcadis U.S., Inc.	CSS Architects Incorporated	J.J. Cardosi, Inc.	Russo Barr Associates, Inc.
201503480177	Worcester	Francis J McGrath Elem	Construction	Accelerated Repair	Windows / Doors	-	Arcadis U.S., Inc.	CSS Architects Incorporated	J.J. Cardosi, Inc.	Russo Barr Associates, Inc.
201603481004	Worcester	Gerald Creamer Center	Design Development	Accelerated Repair	Windows / Doors, Boiler	-	Watermark Environmental, Inc.	Tighe & Bond, Inc.	-	BVH Integrated Services, P.C.   Russo Barr Associates, Inc.
201403480100	Worcester	Goddard Sch/Science Tech	Final Audit Approved	Accelerated Repair	Windows / Doors	-	Architectural Consulting Group, LLC	ICON architecture, inc.	Lambrian Construction Corp.	Russo Barr Associates, Inc.
201503480115	Worcester	Grafton Street	Building Complete	Accelerated Repair	Windows / Doors, Boiler	-	Arcadis U.S., Inc.	CSS Architects Incorporated	J.J. Cardosi, Inc.	Rist-Frost-Shumway Engineering, P.C.   Russo Barr Associates, Inc.
201503480140	Worcester	Jacob Hiatt Magnet	Construction	Accelerated Repair	Windows / Doors	-	Arcadis U.S., Inc.	CSS Architects Incorporated	J.J. Cardosi, Inc.	Russo Barr Associates, Inc.
201203480200	Worcester	Nelson Place	Construction	Core Program	New Construction	CM@R	Tishman Construction Corporation of MA	Lamoureux Pagano & Associates, Inc.	Fontaine Brothers, Inc.	Bard, Rao + Athanas Consulting Engineers, LLC
201403480520	Worcester	South High Community	Feasibility Study	Core Program	-	-	HEERY	Lamoureux Pagano & Associates, Inc.	-	-
201303480230	Worcester	Tatnuck	Closeout	Accelerated Repair	Windows / Doors	DBB	Architectural Consulting Group, LLC	The S/LA/M Collaborative	GVW, Inc.	Russo Barr Associates, Inc.
201403480240	Worcester	Union Hill School	Final Audit Approved	Accelerated Repair	Windows / Doors	-	Architectural Consulting Group, LLC	ICON architecture, inc.	J.J. Cardosi, Inc.	Russo Barr Associates, Inc.
201603480026	Worcester	Wawecus Road School	Design Development	Accelerated Repair	Windows / Doors	-	Watermark Environmental, Inc.	Tighe & Bond, Inc.	-	Russo Barr Associates, Inc.
201403480260	Worcester	West Tatnuck	Final Audit Approved	Accelerated Repair	Windows / Doors	-	Architectural Consulting Group, LLC	ICON architecture, inc.	J.J. Cardosi, Inc.	Russo Barr Associates, Inc.
201303480225	Worcester	Worcester Arts Magnet Sch	Closeout	Accelerated Repair	Windows / Doors	DBB	Architectural Consulting Group, LLC	The S/LA/M Collaborative	GVW, Inc.	Russo Barr Associates, Inc.
201303480420	Worcester	Worcester East Middle	Closeout	Accelerated Repair	Boiler	DBB	Architectural Consulting Group, LLC	The S/LA/M Collaborative	Contractor's Network, Inc.	RDK Engineers
201503500003	Wrentham	Delaney	Construction	Accelerated Repair	Roof	-	P3 Inc.	Turowski2 Architecture, Inc.	-	Gale Associates, Inc.

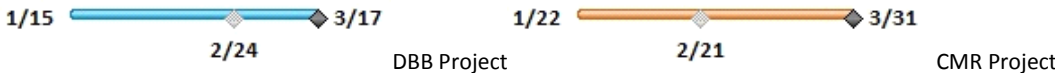
**2018 ESTIMATED BID DATES**

Note bid dates are Estimates ONLY. Please contact Districts for exact information.

Total Project Budget denotes total District costs and does not denote the basis of the MSBA Total Facilities Grant.

District	Enrollment	Project Budget	Start	Finish	Construct Budget	Notes	Timeline													
							Dec '17	Jan '18	Feb '18	Mar '18	Apr '18	May '18	Jun '18	Jul '18	Aug '18	Sep '18	Oct '18	Nov '18	Dec '18	
Millis	515	\$ 52.8	Tue 1/9/18	Wed 3/28/18	\$ 42.6	GMP targeted: April 2018		1/9	Clyde Brown ES			3/28								
Somerville	1590	\$ 256.0	Mon 3/12/18	Mon 7/2/18	\$ 199.0	GMP targeted: July 2018					3/12	Somerville High School			6/4	7/2				
<b>Total</b>	<b>2105</b>	<b>\$ 308.8</b>			<b>\$ 241.6</b>															

Note: Budget values are in millions.  
The project start date represents the Filed-Sub bid solicitation date, gray diamond Filed-Sub bid date, and the black diamond GC Bids / GMP Execution.





**2017 ESTIMATED BID DATES**

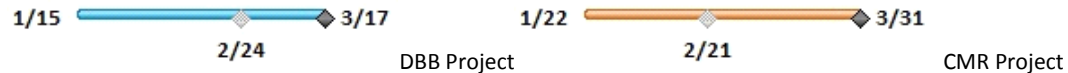
Note bid dates are Estimates ONLY. Please contact Districts for exact information.

Total Project Budget denotes total District costs and does not denote the basis of the MSBA Total Facilities Grant.

District	Enrollment	Project Budget	Start	Finish	Construct Budget	Notes	Jan '17	Feb '17	Mar '17	Apr '17	May '17	Jun '17	Jul '17	Aug '17	Sep '17	Oct '17	Nov '17	Dec '17	Jan '18	Feb '18
							Granby	430	\$ 34.2	Mon 11/7/16	Thu 1/26/17	\$ 26.5	NTP issued: January 2017	1/12	1/26					
Mount Greylock	535	\$ 64.7	Mon 2/20/17	Thu 5/4/17	\$ 52.3	GMP targeted: June 2017		2/20	3/23	5/4										
Quincy	430	\$ 58.3	Fri 3/17/17	Fri 6/9/17	\$ 46.6	GMP targeted: June 2017		3/17	4/12	6/9										
Hanover	560	\$ 32.4	Wed 5/17/17	Tue 7/18/17	\$ 26.1	NTP targeted: August 2017				5/17	6/7	7/18								
Stoughton	1065	\$ 123.5	Wed 5/24/17	Wed 7/26/17	\$ 97.2	GMP targeted: July 2017				5/24	6/21	7/26								
Billerica	1610	\$ 175.9	Mon 6/5/17	Fri 8/25/17	\$ 140.7	GMP targeted: August 2017				6/5	7/7	8/25								
Needham	430	\$ 65.9	Wed 7/12/17	Wed 9/13/17	\$ 45.5	NTP targeted: October 2017				7/12	8/30	9/13								
Dedham	200	\$ 33.2	Fri 7/21/17	Fri 9/8/17	\$ 26.2	NTP targeted: September 2017				7/21	8/11	9/8								
Bourne	460	\$ 39.9	Wed 10/4/17	Tue 11/21/17	\$ 30.9	NTP targeted: November 2017														
Newton	480	\$ 49.0	Wed 10/4/17	Tue 11/28/17	\$ 36.2	GMP targeted: November 2017														
Minuteman Reg. School District	628	\$ 144.9	Wed 10/25/17	Mon 2/5/18	\$ 119.2	GMP targeted: February 2018														
<b>Total</b>	<b>6828</b>	<b>\$ 822.0</b>			<b>\$ 647.4</b>															

Note: Budget values are in millions.  
 The project start date represents the Filed-Sub bid solicitation date, gray diamond Filed-Sub bid date, and the black diamond GC Bids / GMP Execution.

\*Narragansett potentially bidding in 2017



**Projects in Construction**  
**MSBA Grant Basis and Maximum Grant Amount**  
**Data Reported as of June 7, 2017**

Core Program and Waitlist Totals			\$1,864,551,613															*Includes Alternates	\$1,061,173,110
Project	Grade	Contractor	Total Construction Cost*	Projected Enrollment	PFA or Bid Data	Proposed Sq.Ft.	Construction Cost/Sq.Ft.	Building Cost	Building Cost/Sq.Ft.	Procurement Type	Construction Start Date	Substantial Completion	Schedule Variance (days)	Physical Progress	Change Orders	Change Orders %	Construction Status	Est Max Total Facilities Grant	
<b>CAPITAL PIPELINE PROJECTS IN CONSTRUCTION</b>																			
<b>Core Program Totals</b>			<b>\$1,855,586,613</b>																<b>\$1,082,251,982</b>
Abington Frolio Jr Hs	Junior High School	Brait Builders Corp.	\$78,791,215	1,115	Bid	235,370	\$335	\$61,468,040	\$261	Design/Bid/Build	03-Dec-15	18-Jul-17	45 ahead	97%	\$914,273	1.187%	Building is substantially complete as of May 21, 2017. Project team is working on the punch list. Fixture, furniture and equipment installation is in process.	\$48,528,486	
Athol-Royalston Riverbend	Elementary School	Fontaine Brothers, Inc.	\$31,594,000	545	Bid	95,726	\$330	\$24,859,000	\$260	Design/Bid/Build	08-Dec-14	14-Jun-16	0	100%	\$1,931,020	6.112%	Final site work completed. Commissioning and punch list work is ongoing.	\$26,011,620	
Chicopee Chicopee Academy	Middle School	Fontaine Brothers, Inc.	\$31,487,000	825	Bid	176,425	\$178	\$25,639,000	\$145	Design/Bid/Build	01-Jul-14	11-Aug-15	0	100%	\$2,063,322	6.553%	Resolution of HVAC Heating system is ongoing.	\$28,813,458	
Georgetown Penn Brook	Elementary School	Brait Builders Corp.	\$32,875,975	770	Bid	98,000	\$335	\$26,976,145	\$275	Design/Bid/Build	26-Sep-13	20-May-15	0	100%	\$3,897,226	11.854%	Final landscaping completed. Commissioning complete and punch list work ongoing.	\$18,864,538	
New Bedford John Hannigan	Elementary School	H.V. Collins Co., Inc.	\$29,792,732	400	PFA	74,056	\$402	\$20,536,621	\$277	Design/Bid/Build	11-Aug-16	07-Sep-17	0	66%	\$51,016	0.171%	The project team is still targeting August 2017 for school to begin and will work with the City to obtain a temporary Cert. of Occupancy. Roof and window installation is ongoing and nears completion. Third floor work includes painting touch up, finishes, and ceiling tile work. Second floor work includes dry wall completion, taping, and priming. First floor work includes electrical, rough-in, and drywall. Site work includes retaining wall construction.	\$22,428,240	
North Middlesex North Middlesex Reg	High School	CTA Construction Co., Inc.	\$64,995,000	870	Bid	180,530	\$360	\$49,909,000	\$276	Design/Bid/Build	25-May-15	14-Jul-17	0	83%	\$388,632	0.598%	Finishes being installed throughout the building. Furniture, furnishings and equipment delivered and being installed.	\$38,471,881	
Northborough Lincoln Street	Elementary School	Brait Builders Corp.	\$18,450,000	270	Bid	52,920	\$349	\$14,514,966	\$274	Design/Bid/Build	27-Apr-15	31-Aug-16	0	99%	\$188,487	1.022%	Items remaining include minor punch list items, final commissioning and close out.	\$9,925,570	
Peabody J Henry Higgins Middle	Middle School	Bacon-Agostini Construction Joint Venture	\$70,679,700	1,340	Bid	227,314	\$311	\$52,186,177	\$230	Design/Bid/Build	10-Mar-14	05-Aug-16	0	99%	\$1,002,230	1.418%	Field construction is in progress.	\$38,652,137	
Plymouth Plymouth South High	High School	Bacon-Agostini Construction Joint Venture	\$90,266,700	1,005	Bid	248,081	\$364	\$66,744,766	\$269	Design/Bid/Build	06-Jul-15	12-May-17	29 behind	99%	\$390,030	0.459%	Finishes, systems balancing, exterior doors and frame work, flooring, sidewalk work, and final cleaning remain ongoing. Building occupancy is anticipated for August 2017.	\$45,733,725	
Provincetown Provincetown High	High School	E. Amanti & Sons, Inc.	\$5,709,882	111	Bid	62,645	\$91	\$3,671,169	\$59	Design/Bid/Build	14-Mar-16	09-Dec-16	0	99%	\$692,071	12.121%	Further exploration of existing envelope leaks in the Principal's office and the building's electrical entry point will be addressed during Summer of 2017.	\$3,258,431	
Revere Staff Sergeant James J. Hill School	Elementary School	CTA Construction Co., Inc.	\$31,975,839	690	Bid	103,650	\$308	\$27,439,789	\$265	Design/Bid/Build	25-Mar-14	17-Aug-15	0	99%	\$1,110,455	3.473%	Project closeout efforts continue including punch list items.	\$28,099,048	
Scituate Gates Intermediate School	Middle School	Bacon-Agostini Construction Joint Venture	\$52,596,801	710	Bid	164,803	\$319	\$42,947,412	\$261	Design/Bid/Build	08-Dec-15	24-Jul-17	0	91%	\$1,575,040	2.995%	Interior finish work is in progress. Site work including curbing, site electrical and plazas are in progress.	\$20,436,585	
Wachusett Mountview Middle	Middle School	CTA Construction Co., Inc.	\$43,122,257	800	Bid	126,200	\$342	\$28,959,805	\$229	Design/Bid/Build	21-May-14	11-Apr-16	0	98%	\$993,666	2.304%	Incomplete commissioning items and warranty work remains for completion and moving this project into the closeout phase.	\$24,279,591	
West Bridgewater West Bridgewater Jr-Sr	Junior High School	CTA Construction Co., Inc.	\$46,267,914	625	Bid	141,250	\$328	\$35,071,188	\$248	Design/Bid/Build	01-Oct-13	09-Jul-15	0	99%	\$622,152	1.345%	Commissioning and punch list work ongoing.	\$26,385,058	
Westfield Abner Gibbs	Elementary School	Fontaine Brothers, Inc.	\$25,578,000	600	Bid	95,573	\$268	\$21,444,000	\$224	Design/Bid/Build	24-Aug-12	01-Jun-19	0	2%	\$0	0.000%	Work stoppage due to preliminary injunction based upon project site status as Article 97 "Protected Land". Preliminary Injunction vacated but city awaiting National Park Service approval for use of site. The General Contractor has demobilized from the site. The project team is working on closing out the General Contractor's contract.	\$20,004,463	
Beverly Briscoe Middle	Middle School	Bacon-Agostini Construction Joint Venture	\$90,129,432	1,395	PFA	231,509	\$389	\$62,790,920	\$271	CM-at-Risk	24-Dec-15	30-Mar-18	0	35%	\$0	0.000%	Plywood sheathing and air and vapor barrier are being applied to exterior walls. Spray on fire proofing is ongoing. Light gauge framing is progressing in classroom wings. Drywall installation has begun in some areas. Roof work at classroom wings is nearing completion. Mechanical, electrical and plumbing rough-in are continuing. Slab on grade pours are ongoing.	\$48,018,498	
Boston Dearborn	Middle School	Gilbane Building Company	\$60,245,740	600	Bid	128,304	\$470	\$36,655,002	\$286	CM-at-Risk	08-Sep-15	27-Dec-17	0	63%	\$336,587	0.559%	Drywall installation is ongoing. Window and curtain wall installation continues. Skylight installation and Exterior masonry have begun. Mechanical, electrical and plumbing trades are progressing throughout the interior. Air vapor barrier and roof work is nearly complete.	\$36,033,391	
Brookline Edward Devotion	Elementary School	Shawmut Design and Construction	\$92,237,854	1,010	PFA	227,087	\$406	\$57,910,095	\$255	CM-at-Risk	11-Jul-16	31-Jul-18	0	21%	\$131,946	0.143%	All structural steel has been put in place. Exterior framing, roof installation, spray fireproofing, damp proofing, rough carpentry, mechanical, electrical and plumbing rough-ins, masonry, stairs and site utilities continue.	\$26,985,261	
Chelsea Clark Avenue School	Middle School	W. T. Rich Company Inc.	\$46,046,367	670	Bid	115,235	\$400	\$29,311,076	\$254	CM-at-Risk	23-Feb-15	29-Jun-18	0	70%	\$262,405	0.570%	Phase 2 construction activities continue with completion of demolition, excavation to subgrade, grading, and earth shoring. Forming and placement of concrete foundations began. Structural steel delivery and installation is pending.	\$36,163,680	
Gloucester West Parish	Elementary School	W. T. Rich Company Inc.	\$29,995,466	355	Bid	65,679	\$457	\$18,591,872	\$283	CM-at-Risk	07-Jul-14	15-Jul-16	0	99%	\$573,387	1.912%	Minor punch list and administrative activities are ongoing.	\$14,673,132	
Haverhill Caleb Dustin Hunking	Middle School	Shawmut Design and Construction	\$49,544,769	1,005	Bid	147,996	\$335	\$35,181,852	\$238	CM-at-Risk	20-Apr-15	16-Dec-16	0	98%	\$1,937,468	3.911%	The lower school portion of the building will be occupied in September. Punch list work continues on the new building. Commissioning continues throughout the building. Mechanical, electrical and plumbing work continues on the new maintenance building. Site work continues including parking areas and athletic fields.	\$39,518,874	
Holbrook Holbrook Jr Sr High	High School	Consigli Construction Company, Inc.	\$78,135,643	1,095	Bid	217,353	\$359	\$52,399,810	\$241	CM-at-Risk	24-Jun-15	15-Jun-17	0	83%	\$1,890,895	2.435%	Finish work continues including prime and finish painting, metal hand railings, acoustic ceiling grids and tiles, ceramic tiles, floor tiles, lab casework, wooden door and hardware installations, gym floor finishing, and stairway wooden hand rails. Site work continues including top soil placement and grading, light pole installations, fencing, sidewalks and granite curbing.	\$53,832,918	
Hopkinton Center	Elementary School	Colantonio, Inc.	\$35,140,982	395	PFA	83,256	\$422	\$21,864,684	\$263	CM-at-Risk	03-Oct-16	31-Jul-18	0	22%	\$148,521	0.423%	Building foundation is complete. Structural steel is complete at the Cafetorium and Gymnasium and it is in progress in the academic buildings. Building underground utilities and site work are in progress.	\$13,763,197	
Lunenburg Lunenburg High	Junior High School	Shawmut Design and Construction	\$57,994,017	820	Bid	169,018	\$343	\$41,982,415	\$248	CM-at-Risk	15-Aug-14	30-Jun-16	0	100%	\$1,188,726	2.050%	Final site work to be completed. Commissioning and punch list work ongoing.	\$34,122,826	
Milford Woodland	Elementary School	Shawmut Design and Construction	\$48,375,101	985	Bid	132,539	\$365	\$34,861,130	\$263	CM-at-Risk	01-Apr-15	28-Jul-16	0	97%	\$1,462,398	3.023%	Punch list and additional owner requested changes/work are in progress.	\$27,418,234	
Mount Greylock Mt Greylock Reg High	High School	Turner Construction Company	\$52,310,706	535	PFA	132,800	\$394	\$30,982,991	\$233	CM-at-Risk	30-Mar-17	14-Nov-18	0	20%	\$0	0.000%	Demolition and abatement is ongoing in the existing building. Structural steel and support columns for the administration and cafeteria portion of the building installed in July 2017.	\$32,491,074	
Newton A E Angier	Elementary School	W. T. Rich Company Inc.	\$30,158,875	465	Bid	74,960	\$402	\$19,837,027	\$265	CM-at-Risk	22-Aug-14	04-Jan-16	0	99%	\$366,791	1.399%	All warranty items are complete, with the exception of the asphalt patch. Work is being scheduled for Saturdays in June. Issue at sliding glass doors at main reception is still under investigation. The solution involves a significant re-design as the current design is not suitable for an opening of this dimension (10' width).	\$10,687,077	
North Reading North Reading High	Junior High School	Gilbane Building Company	\$101,328,353	1,370	Bid	267,939	\$378	\$66,726,592	\$249	CM-at-Risk	01-May-12	21-Aug-15	0	99%	\$3,512,026	3.466%	Drain line corrective work is underway along with remaining landscape and punch list items. All remaining work is scheduled to be complete mid-August 2017.	\$47,071,882	
Pittsfield Taconic High	High School	Gilbane Building Company	\$97,757,373	920	PFA	246,520	\$397	\$56,984,184	\$231	CM-at-Risk	21-Mar-16	29-Jun-18	0	38%	\$1,038,514	1.062%	In A and B buildings which contain common areas, progress continues on all mechanical rough-ins as well as masonry wall construction, metal framing, and spray fireproofing. Roofing and Precast panel installations were completed on the exterior of the A&B buildings as well as C&D which contain the automotive and other shop areas as well as classrooms. Window installation and metal framing began in Buildings C&D.	\$72,491,194	
Westborough Sarah W Gibbons Middle	Middle School	Gilbane Building Company	\$21,595,600	550	Bid	110,000	\$196	\$12,693,993	\$115	CM-at-Risk	22-Jun-16	25-Aug-17	0	70%	\$647,191	2.997%	Phase 4 work is in progress and includes auditorium, boiler room, gymnasium and select bathrooms. Work in the auditorium includes seating; which has been removed and sent to be refinished, new ADA chairlift, overhead sprinkler system and refinish the stage. Boiler room work includes; new switchgear and hot water heater, and ductwork to connect to new roof-top units. Gymnasium work includes new install of mechanical, electrical and plumbing rough-ins in toilet facilities, new walls and rough-ins in the locker rooms.	\$11,113,998	
Wilmington Wilmington High	High School	Gilbane Building Company	\$67,558,835	960	Bid	192,443	\$351	\$48,060,314	\$250	CM-at-Risk	30-Apr-13	12-Feb-15	0	99%	\$2,881,004	4.458%	Resolution of gym floor issues are ongoing.	\$35,674,893	



**Projects in Construction  
MSBA Grant Basis and Maximum Grant Amount  
Data Reported as of June 7, 2017**

Winchester Winchester High School	High School	Consigli Construction Company, Inc.	\$101,404,577	1,370	Bid	278,925	\$364	\$70,862,283	\$254	CM-at-Risk	23-Apr-14	31-Aug-17	0	93%	\$5,770,798	5.691%	Phase 3 of 3 is nearing completion. A and B wing will have their floors and wall tiles completed in the month of June. At the end of June the construction walls will be taken down and finishes and utilities will be connected across the corridor, modulares will be removed and the site work can be completed. Technology installation is in progress.	\$42,187,027
Worcester Nelson Place	Elementary School	Fontaine Brothers, Inc.	\$46,546,300	600	Bid	111,256	\$418	\$29,503,564	\$265	CM-at-Risk	01-Jul-15	31-May-17	22 Behind	96%	(\$147,809)	-0.318%	Move-in date is scheduled for June 22. Site work is in progress, curbing is being installed at the playgrounds and along the roadways. Furniture, fixtures & equipment delivery and installation is in progress.	\$33,324,289
Carver Carver Elementary School	Elementary School	CTA Construction Co., Inc.	\$41,426,767	750	PFA	112,350	\$369	\$26,491,831	\$236	Undetermined	27-Sep-16	22-Jun-18	0	21%	\$37,882	0.096%	Steel superstructure is complete and roofing substrate installation continues. Installation of interior steel studs has commenced. Site utilities remain ongoing. Placement of concrete slab is nearing completion.	\$25,814,682
Granby West St	Elementary School	Fontaine Brothers, Inc.	\$26,453,000	430	PFA	68,760	\$385	\$16,570,000	\$241	Undetermined	07-Feb-17	17-Aug-18	0	5%	\$0	0.000%	Installation of footing and foundations at the addition is ongoing, rough under-slab utilities are in progress, abatement and demolition of the kitchen has started as well as site storm water management structures.	\$16,867,064
Woburn Wyman	Elementary School	CTA Construction Co., Inc.	\$27,017,841	410	PFA	70,701	\$382	\$18,251,786	\$258	Undetermined	10-Jan-17	11-Jul-18	0	23%	\$51,107	0.189%	Project is progressing with metal decking installation and elevated slab concrete pours. Exterior metal framing installation and slab on grade pour to start end of June 2017. 3 light poles will be relocated from the site to the opposite side of the street and blasting of rock and ledge are taking place there-after.	\$13,974,154
<b>Waitlist Totals</b>			<b>\$8,965,000</b>				<b>\$139</b>		<b>\$108</b>									<b>\$10,131,806</b>
New Bedford Taylor School at the Sea Lab Marine Science Education Center	N/A	M. O'Connor Contracting, Inc.	\$8,965,000	284	Bid	64,533	\$139	\$6,967,355	\$108	Design/Bid/Build	28-Nov-15	01-Nov-16	0	99%	\$457,938	5.108%	Work continues on punch list items.	\$10,131,806