

Massachusetts School Building Authority

CAPITAL PLANNING PROJECT OVERVIEW REPORT

June 6th, 2018

TABLE OF CONTENTS

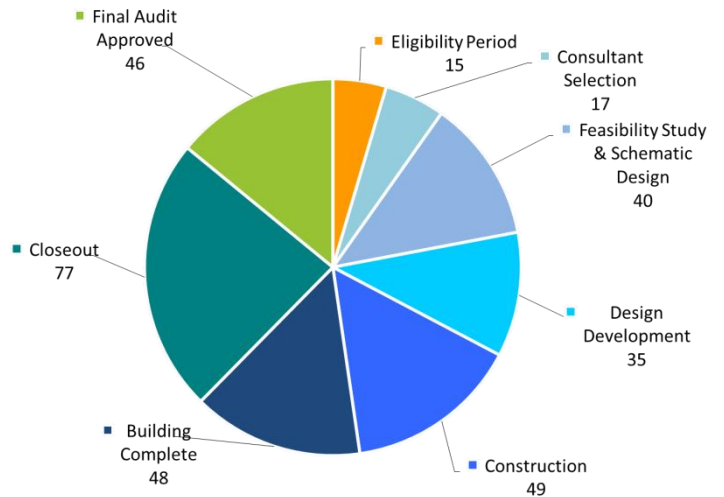
Capital Pipeline Overview	2-3
Statements of Interest (SOIs)	4
Core Program	5-15
Eligibility Period	5-6
Consultant Selection	7-8
Feasibility Study	9
Schematic Design	10
Commissioning	11-12
Design Development	13
Summary of Bid Data	14
Construction	15-16
Accelerated Repair Program	17-23
Project Variances	23-24
<i>Appendices</i>	
(A) <i>Project Status List</i>	
(B) <i>2018, 2019 and 2020 Estimated Bid Dates</i>	
(C) <i>Construction Status Report</i>	

CAPITAL PIPELINE OVERVIEW

Status of Current Projects

A total of 327 projects that have received invitations from the Board of Directors (“Board”) to collaborate with the Massachusetts School Building Authority (“MSBA”) are currently in the MSBA’s Eligibility Period and Capital Pipeline. The summary chart provides the number of projects in Eligibility Period and each phase of the Capital Pipeline. For a detailed look at the Capital Pipeline projects, please go to www.massschoolbuildings.org/building and select “Capital Pipeline Status Chart”.

Capital Planning Updates:



The following activities are scheduled for FY 18:

- The 2018 Statement of Interest (“SOI”) submittal period opened on January 5, 2018 and closed on February 16, 2018 for the Accelerated Repair Project (“ARP”) Program. SOIs that were submitted by districts within this timeframe are currently being reviewed by MSBA staff and it is anticipated that recommendations for invitations into the ARP Program will be presented to the Board at the June 27, 2018 Board Meeting.
- The 2018 SOI submittal period opened on January 5, 2018 and closed on April 6, 2018 for the Core Program. Updates to the SOI due diligence process were presented at the May 2018 Board Meeting.
- Request for consultant services to review school project costs has been advertised with award and contract kick-off anticipated mid to late August 2018.
- Work is underway with the consultant that is reviewing standards and practices for science and technology/engineering education in K-12 schools. Updates anticipated by the August 2018 Board Meeting.

2018 Progress Report

- Statement of Interest (“SOI”) 2018
 - The 2018 SOI submittal period opened on January 5, 2018 and closed on February 16, 2018 for the Accelerated Repair Program (“ARP”) and closed April 6, 2018 for the Core Program.
- Eligibility Period
 - There are 15 districts in Eligibility Period.
 - For the 2017 SOIs, four districts commenced Eligibility Period as of April 2, 2018, three districts commenced as of May 1, 2018, and four districts commenced as of June 1, 2018.
- Feasibility Study/Schematic Design
 - 7 districts received MSBA approval for selection of an Owner’s Project Manager (“OPM”).
 - Three districts completed Designer Selection.
 - 17 districts are anticipating submittals for the preferred schematic solutions between April 2018 and August 2018.
 - Nine districts are anticipating submittals for Project Funding Agreements between April 2018 and August 2018.
- Accelerated Repair Program (“ARP”)
 - 7 districts from the 2017 ARP invitations will be presented for Project Funding Agreements at the June Board meeting.
- Construction Costs – Core Program
 - MSBA staff anticipates eleven projects will bid in 2018.
- Substantial Completion
 - 11 projects are projected to reach substantial completion in 2018.

STATEMENTS OF INTEREST (SOIs)

2018 SOI Process

The 2018 SOI submittal period opened on January 5, 2018. The deadline to file SOIs for consideration in the Accelerated Repair Program, which is primarily for the repair and/or replacement of roofs, windows/doors, and/or boilers in an otherwise structurally sound facility, was Friday, February 16, 2018. The MSBA reviewed the 60 ARP SOIs that were received by the deadline and presented initial recommendations for invitation at the May 9, 2018 Facilities Assessment Subcommittee Meeting. Staff will present final recommendations for invitations to the Accelerated Repair Program at the June 27, 2018 Board Meeting.

The deadline to file SOIs for consideration in the Core Program, which is primarily for projects beyond the scope of ARP, including extensive repairs, renovations, addition/renovations, and new school construction, closed on Friday, April 6, 2018. The MSBA reviewed the 70 Core Program SOIs and presented recommendations for Further Review and No Further Review at the May 22, 2018 Board Meeting. Staff anticipates recommendations for invitation to Eligibility Period at the December 12, 2018 Board Meeting or February 2019 Board Meeting.

The table below lists the number of SOIs received and Invitations granted for calendar years 2013 through 2018.

Year	Total Number of SOIs Submitted	Number of CORE Program SOIs Submitted	Number of CORE Program Invitations	Number of Accelerated Repair Program SOIs Submitted	Number of Accelerated Program Repair Invitations
2013	201	123	13	78	50
2014	229	110	15	119	51
2015	158	97	26	61	44
2016	156	89	17	67	49
2017	156	83	15	73	36
2018	130	70	TBD	60	TBD

CORE PROGRAM

ELIGIBILITY PERIOD

There are 15 districts in Eligibility Period, with seven districts having secured their funding.

An agreed-upon enrollment is a key pre-requisite for the MSBA to commence a Feasibility Study with a district. To begin the enrollment projection process, a district must file enrollment information utilizing the MSBA's online enrollment projection tool. None of the districts currently in Eligibility Period have completed their online enrollment projection information.

District	School	Eligibility Period Commencement Date	30 days	60 days	90 days		180 days		270 days	Date of Invitation to Feasibility Study (Estimated)
			ICC	SBC	Online Enrollment Projection Info	Ed Profile Questionnaire	Maintenance Documents	Enrollment Certification	Local Authorization	
Andover	West ES	5/1/18	X						X	TBD
Ashland	David Mindess ES	5/1/18	X						X	TBD
Boston	Carter Development School	7/2/18								TBD
Bristol-Plymouth VTSD	Bristol-Plymouth Reg. Tech. School	7/2/18								TBD
Greater Fall River RVSD	Diman Regional Voc. Tech. HS	7/2/18								TBD
Groton-Dunstable RSD	Florence Roche School	6/1/18							X	TBD
Lawrence	Francis M. Leahy ES	4/2/18	X	X						TBD
Medfield	Dale Street ES	4/2/18	X	X					X	TBD
Northeast Metropolitan RVSD	Northeast Metropolitan Reg. Voc HS	6/1/18								TBD
Randolph	Elizabeth G. Lyons ES	6/1/18								TBD
Somerset	Somerset MS	5/1/18	X						X	TBD
Swampscott	Hadley ES	6/1/18							X	TBD

District	School	Eligibility Period Commencement Date	30 days	60 days	90 days		180 days		270 days	Date of Invitation to Feasibility Study (Estimated)
			ICC	SBC	Online Enrollment Projection Info	Ed Profile Questionnaire	Maintenance Documents	Enrollment Certification	Local Authorization	
Watertown	Watertown HS	4/2/18	X	X						TBD
Wellesley	Ernest F. Upham ES	4/2/18	X	X						TBD
Westwood	Paul Hanlon ES	6/1/18							X	TBD

CONSULTANT SELECTION

Owner's Project Manager ("OPM") Selection

After the district has completed all Eligibility Period requirements and has received a Board Invitation to Feasibility Study, the district procures an OPM. Since the last report, seven districts have completed their OPM selection (shaded in the table below). Currently, there are seven districts in the Capital Pipeline that are in the process of procuring an OPM.

District	School	Anticipated Selection
Braintree	South MS	April 2018
Millbury	Raymond E. Shaw ES	April 2018
Rockland	Jefferson ES	April 2018
Sharon	Sharon HS	May 2018
Acton-Boxborough	C.T. Douglas ES	May 2018
Easton	Center ES	June 2018
Leicester	Leicester MS	June 2018
Worcester	Doherty Memorial HS	July 2018
Gloucester	East Gloucester ES	July 2018
Nauset RSD	Nauset RHS	July 2018
Lawrence	Oliver Partnership School	August 2018
Springfield	William N. DeBerry	August 2018
Fitchburg	Crocker ES	August 2018
Orange	Dexter Park School	September 2018

Designer Selection

After a district has selected and executed a contract with an OPM, the district selects a designer by following the MSBA’s Designer Selection Panel (“DSP”) process. Since the last report, three districts have completed their designer selection process (shaded in the table below). There are currently 7 districts in the Capital Pipeline that are in the process of procuring a designer.

District	School	Anticipated Selection
Westborough	Annie E. Fales ES	March 2018
Bridgewater-Raynham	Mitchell ES	May 2018
Gardner	Waterford Street ES	May 2018
Millbury	Raymond E. Shaw ES	June/July 2018
Acton-Boxborough	C.T. Douglas ES	July/August 2018
Rockland	Jefferson ES	June 2018
Sharon	Sharon HS	July 2018
Braintree	South HS	June 2018
Easton	Center ES	TBD
Leicester	Leicester MS	TBD

For additional information on the selected consultant teams, see Appendix A.

FEASIBILITY STUDY

Once a district has procured an OPM and designer, the district and the district’s consultants must complete two Feasibility Study submittals, the Preliminary Design Program and the Preferred Schematic Report, prior to Board consideration to proceed into Schematic Design. Based on the most recent data and schedules provided to the MSBA by districts, the MSBA anticipates that 14 districts will appear before the Board for their Preferred Schematic Designs authorizations at the upcoming June, August, and October 2018 Board Meetings.

District	School	Anticipated PS Board Date
Belmont	Belmont HS	June 2018
Lowell	Lowell HS	June 2018
Framingham	Fuller MS	June 2018
Shrewsbury	Beal ECC	June 2018
Wareham	Minot Forest	June 2018
Danvers	Ivan G. Smith ES	August 2018
Holyoke	H.B. Lawrence ES	August 2018
Tewksbury	Trahan ES	August 2018
Arlington	Arlington HS	August 2018
Marblehead	Gerry ES	August 2018
Framingham	Fuller MS	October 2018
Pentucket RSD	Pentucket RHS	October 2018
Weymouth	Maria Chapman MS	October 2018
Central Berkshire	Wahconah RHS	October 2018

SCHEMATIC DESIGN

Prior to consideration by the Board for Project Scope and Budget Agreement authorization, a district must submit a Schematic Design to the MSBA for review. Based on the most recent data and schedules provided to the MSBA by districts, the MSBA anticipates that 10 districts will appear before the Board for Project Scope and Budget Agreement authorizations at the upcoming June, August, and October 2018 Board Meetings.

District	School	Anticipated PS&B Board Date
Bristol County	Bristol County Agr. HS	June 2018
Northbridge	Balmer ES	June 2018
Belmont	Belmont HS	August 2018
Foxborough	Burrell ES	August 2018
Springfield	Brightwood ES	August 2018
Easthampton	Maple ES	August 2018
Manchester Essex	Memorial ES	August 2018
Easthampton	Maple ES	August 2018
Shrewsbury	Beal ECC	October 2018
Framingham	Fuller MS	October 2018

COMMISSIONING

The MSBA assigns a Commissioning Consultant after a district has secured local funding for the Board approved project. Since the last report, the MSBA has assigned Commissioning Consultants to 14 additional projects presented in the table below.

District	School	Program	Estimated Const. Cost (million)	Commissioning Consultant	Contract Amount
Holyoke	2017 ARP Kelly ES boiler	2017 ARP	\$1.15	Consulting Engineering Services	\$15,960
Taunton	Mulcahey Elementary School	Core	\$50.10	Consulting Engineering Services	\$98,148
Fall River	Durfee High School	Core	\$217.80	Jacobs Engineering Group	\$391,038
Lawrence	2017 ARP Arlington roofing and boiler	2017 ARP	\$2.54	Symmes, Maini & McKee	\$30,200
Boston	2017 ARP Russell School roof	2017 ARP	\$1.60	Simpson Gumpertz & Heger	\$28,000
Ludlow	Chapin Street Elementary School	Core	\$46.00	Horizon Engineering Associates	\$95,859
Boston	2017 ARP 4 schools boilers	2017 ARP	\$5.63	Rist-Frost-Shumway Engineering	\$66,500
Lynn	2017 ARP Hood roof windows	2017 ARP	\$4.44	CBI Consulting LLC	\$79,415
Natick	Kennedy Middle School	Core	\$87.60	Rist-Frost-Shumway Engineering	\$142,112
Seekonk	2017 ARP Aitken windows	2017 ARP	\$0.93	Thompson & Lichtner	\$13,820
Holyoke	2017 ARP 3 schools windows	2017 ARP	\$10.26	R.J. Kenney Associates	\$121,500
Attleboro	Attleboro High School	Core	\$223.10	Cadmus Group	\$371,612
Marlborough	Richer Elementary School	Core	\$47.80	WSP USA	\$95,836
Harvard	Hildreth Elementary School	Core	\$43.00	Bard, Rao + Athanas Consulting Engineers	\$88,622

To date, the MSBA has executed 440 Commissioning Consultant contracts, totaling \$32.5 million in commissioning fees, for 540 schools. Construction budgets for projects being commissioned total \$8,880,801,554. To date, 316 work orders have been completed.

The table below represents the status of commissioning assignments sorted by the fiscal year in which the commissioning work orders were issued.

Fiscal Year	No. Work Orders Issued	Value of Work Orders Issued	Total Invoiced*	Percent Complete
FY10	31	\$4,231,376	\$4,273,277	100%
FY11	95	\$6,132,890	\$6,058,460	99%
FY12	52	\$4,373,944	\$4,386,520	100%
FY13	55	\$3,364,697	\$3,408,897	100%
FY14	47	\$2,604,062	\$2,531,446	97%
FY15	44	\$2,277,711	\$2,189,025	96%
FY16	44	\$3,385,137	\$2,219,333	66%
FY17	37	\$2,290,661	\$1,141,337	50%
FY 18	35	\$3,800,060	\$221,899	6%
Total	440	\$32,460,538	\$26,430,194	

*Includes approved additional services over value of Work Order

DESIGN DEVELOPMENT

After a district has secured local funding and has entered into a Project Funding Agreement (“PFA”) with the MSBA, the district enters into the Design Development Phase. Currently, there are 35 projects in the Design Development Phase with a total estimated construction cost of approximately \$1.64 billion. Of those 35 projects, 21 are ARP Projects and 14 are Core Program Projects. The 14 Core Program Projects in Design Development have a total estimated construction cost of approximately \$1.58 billion and are listed below.

Elementary School Districts	Middle School Districts	High School Districts	Other Grade Configurations
Harvard (PK-5) Lexington (K-5) Ludlow (2-5) Taunton (PK-4)	Natick (5-8)	Attleboro (9-12) Boston (9-12) Cape Cod Reg. Vo Tech (9-12) Fall River (9-12) Middleborough (9-12) Somerville (9-12) Worcester (9-12)	Saugus (6-12) Westport (5-12)

District Design Submittals

During Design Development, districts submit three design submittals (Design Development, 60% Construction Documents, and 90% Construction Documents) for MSBA review. MSBA staff reviews documents to ensure the project is still in compliance with the PFA. The chart below indicates the number of submittals received and reviewed by the MSBA to date by type and by fiscal year.

Fiscal Year	DD Reviews	60% Reviews	90% Reviews	Total Reviews
FY2010	5	0	0	5
FY2011	21	24	20	65
FY2012	12	24	28	64
FY2013	20	20	19	59
FY2014	15	13	14	42
FY2015	6	12	13	31
FY2016	10	10	8	28
FY2017	11	10	12	33
FY2018	8	9	9	26
Totals	108	122	123	353

SUMMARY OF BID DATA

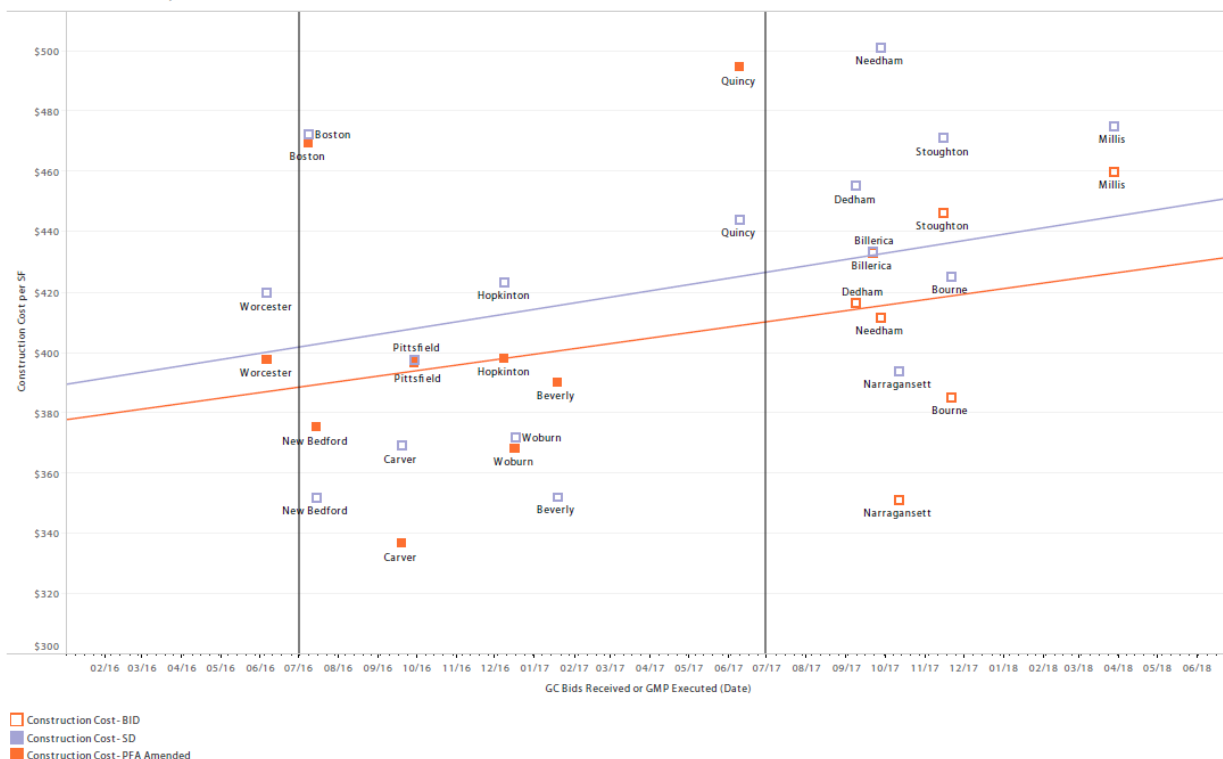
Based on the most recent data and schedules provided by the districts, 13 projects are scheduled to bid in 2018, seven projects are scheduled to bid in 2019, and one project is scheduled to bid in 2020.

Year	Number of Projects	Design Basis for Enrollment	Project Budget	Construction Budget
2018	13	10,428	\$1.29 billion	\$1.03 billion
2019	7	7,425	\$916 million	\$743 million
2020	1	1,725	\$259 million	\$223 million
Grand Total	21	19,578	\$2.46 billion	\$2.00 billion

Note: These numbers are based on preliminary information received from the District and are subject to further review and calculation.

The graph below plots Schematic Design Estimates, Construction Estimates, and Construction Bid Results from 2016 to present. The estimates and bid results for the seven new construction projects that went out to bid in 2016, the seven new construction projects that went out to bid in 2017, and the one new construction project that went out to bid in 2018 are represented in the graph below. The Orange Line is a trend line for Bid Costs and the Purple Line is a trend line for Schematic Design Estimates. *The Millis Clyde F Brown Elementary is the only new construction project that has received bids since the last report prepared for the April 10, 2018 Board Meeting.* A fully interactive version of this graph is available on the MSBA website, here: <http://info.massschoolbuildings.org/TabPub/TableauCostData.aspx>

Construction Costs, Bid vs. SD



CONSTRUCTION

When a district issues a Notice to Proceed, the project is advanced to the Construction Phase. Currently, there are 49 projects in the Construction Phase with a total estimated construction cost of \$1.23 billion. Of those 49 projects, 26 are ARP Projects, and 23 are Core Program Projects. This does not include the 48 projects that have reached substantial completion and are currently in the Building Complete Phase. The 23 Core Program Projects have a total estimated construction cost of \$1.27 billion and are listed below.

Elementary School Districts	Middle and Middle/High School Districts	High School Districts	Other Grade Configurations
Bourne (3-5) Carver (PK-5) Granby (PK-3) Hanover (2-4) Hopkinton (PK-1) Millis (PK-5) Narragansett (PK-5) Needham (K-5) Newton (K-5) Woburn (K-5)	<u>Middle School Districts</u> Beverly (5-8) Braintree (5-8) Chelsea (5-8) Quincy (5-8) Triton (PK-6)	Blue Hills Reg. Vo Tech (9-12) Minuteman RSD (9-12) Mt. Greylock RSD (9-12) Pittsfield (9-12) Stoughton (9-12)	Billerica (PK; 8-12) Brookline (K-8) Dedham (PK-K)

Amendment to the Project Funding Agreement (PFA)

Upon receipt of construction bids or the execution of a GMP, a district submits the Contractor’s Schedule of Values to the MSBA. MSBA staff and the district collaborate to reconcile the construction costs from the schedule of values against the estimated construction budget and an amendment to the PFA is executed to reflect bid costs. The chart, shown below, is the number of amendments to PFAs, listed by fiscal year.

Fiscal Year	Total Amendments
FY2012	30
FY2013	31
FY2014	31
FY2015	17
FY2016	22
FY2017	8
FY2018	15

Substantial Completion

11 projects are scheduled to reach Substantial Completion in 2018. They are listed in the table below.

Project	Enrollment	Contractor	OPM	Designer	Original Substantial Completion Date	Actual Substantial Completion Date	Actual Difference (days)
Boston Dearborn MS	600	Gilbane	Daedalus	Jonathan Levi	12/27/17	4/12/18	106
Beverly Briscoe Middle School	1395	Bacon-Agostini	HEERY	Ai3	4/1/18		
Mt. Greylock	535	Turner	Dore & Whittier	Perkins Eastman/DPC	4/13/18		
Carver Elementary	750	CTA	PMA	HMFH	6/22/18		
Pittsfield Taconic High School	920	Gilbane	Skanska	Drummey Rosane Anderson	6/29/18		
Woburn Wyman	410	CTA	Municipal	DiNisco Design	6/30/18		
Brookline Edward Devotion	1010	Shawmut	Anthony Guigli	HMFH	7/31/18		
Hopkinton Center	395	Colantonio	Compass	Drummey Rosane Anderson	7/31/18		
Granby West St	430	Fontaine Brothers	Colliers	Jones Whitsett	8/17/18		
Chelsea Clark Avenue School	670	W.T. Rich	Pinck	HMFH	11/15/18		
Dedham Early Childhood Center	200	C.J. Marbardy H.V. Collins	Construction Monitoring Services	Knight, Bagge & Anderson	12/21/18		

For additional information on the construction status of all of these projects, see Appendix C.

ACCELERATED REPAIR PROGRAM



The photos above and below depict the North Quincy High School, a 2013 ARP invitation, before and after a window/door replacement project, which was completed in September 2015. The School was re-invited in May 2017 for a partial roof replacement project for which the District received authorization for a Project Funding Agreement at the February 2018 Board of Directors Meeting.



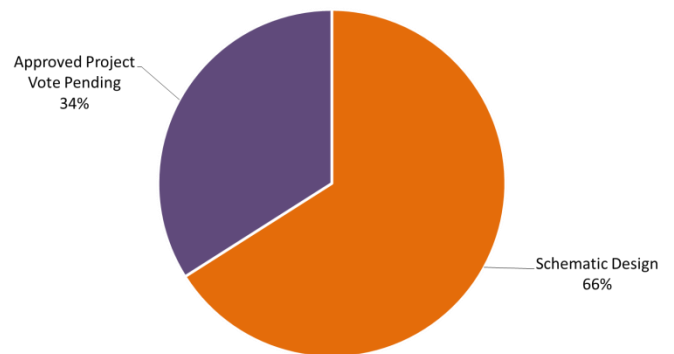
Currently, there are 254 projects either active or completed in the ARP. The 254 projects are located in 103 districts, many of whom have been invited to the ARP multiple times. All of the new information that has been updated since the last report is ***italicized and bolded***.

Repair Program	Number of Districts	Number of Projects	Total Project Budgets	Maximum Facilities Grants	Number of Projects Final Audit Approved
2017 Accelerated*	20	35	<i>\$77,474,638</i>	<i>\$51,291,230</i>	0
2016 Accelerated	28	48	\$156,598,234	\$83,007,586	0
2015 Accelerated	24	43	\$136,680,652	\$91,974,052	6
2014 Accelerated	34	47	\$108,410,084	\$65,388,035	29
2013 Accelerated	25	45	\$94,650,790	\$54,662,711	39
2012 Accelerated	24	36	\$63,009,653	\$38,267,952	36
Green	93	189	\$366,649,226	\$222,889,218	188

*The financial totals reflect the twelve projects approved for Project Funding Agreements as of the April 10, 2018 Board of Directors Meeting.

2017 Accelerated Repair Program

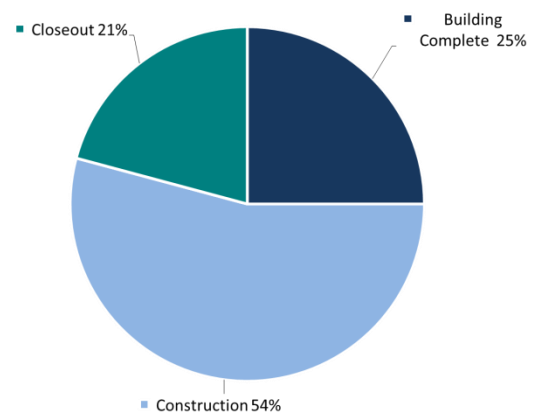
- Invitations – 20 districts, representing 36 projects
 - Scope includes nine roofs, 23 windows/doors, and 15 boilers
- ***SOI Removal - one project (one boiler)***
- ***Approved for Project Funding Agreement - 14 districts, representing 25 projects***
- ***Total Project Budgets - \$77,474,638***
- ***MSBA Total Facilities Grant - \$51,291,230***



2017 ARP Status Chart

2016 Accelerated Repair Program

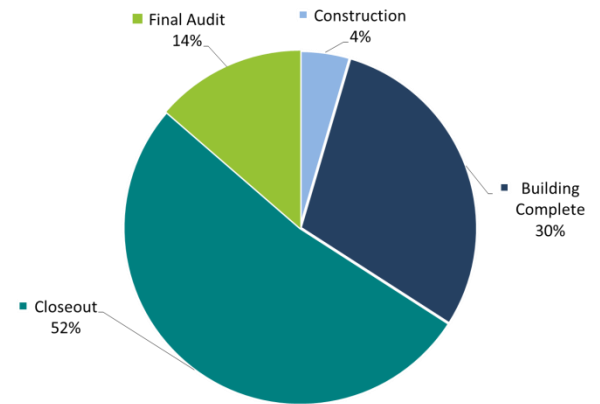
- Invitations – 28 districts, representing 49 projects
 - Scope includes 25 roofs, 19 windows/doors, and 13 boilers
- ***SOI Removal - one project (one boiler)***
- Approved for Project Funding Agreements - 28 districts, representing 48 projects
- Total Project Budgets - \$156,598,234
- MSBA Total Facilities Grant - \$83,007,586
- Four districts, representing four projects, required a schedule extension following PFA approval
- ***35 of 48 projects reporting bid within estimated budget***



2016 ARP Status Chart

2015 Accelerated Repair Program

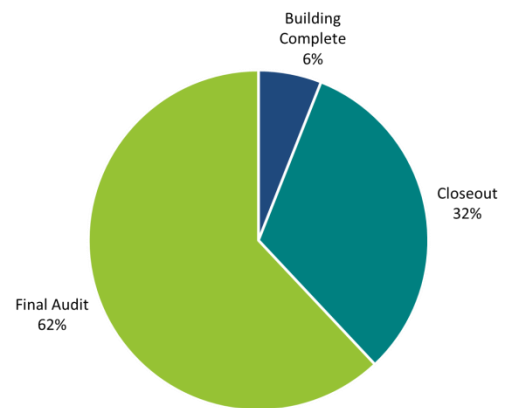
- Invitations – 24 districts, representing 44 projects
 - Scope includes 22 roofs, 26 windows/doors, and nine boilers
- SOI Removal – one project
- Approved for Project Funding Agreements – 24 districts, representing 43 projects
- Total Project Budgets - \$136,680,652
- MSBA Total Facilities Grants - \$91,974,052
- **One district, representing one project, required two schedule extensions following PFA Approval**
- 81% of projects bid within estimated budgets
- **6 projects have completed Final Audit.**



2015 ARP Status Chart

2014 Accelerated Repair Program

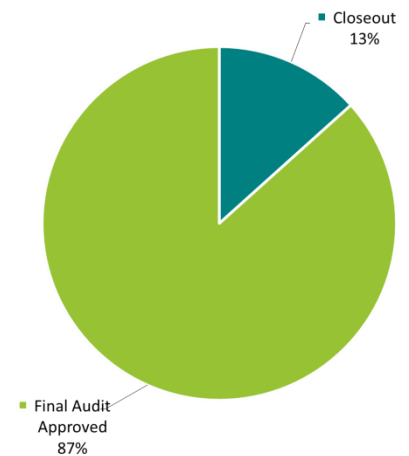
- Invitations – 36 districts, representing 51 projects
- SOI Removal – two districts, representing four projects
- Current 2014 ARP projects – 34 districts, representing 47 projects
 - Scope includes 20 roofs, 25 windows/doors, and 13 boilers
- Approved for Project Funding Agreements – 34 districts, representing 47 projects
- Total Project Budgets - \$108,410,084
- MSBA Total Facilities Grants - \$65,388,035
- schedule extensions following
- Four districts, representing six projects, required PFA approval
- 85% of projects bid within estimated budget
- 62% of projects have completed Final Audit



2014 ARP Status Chart

2013 Accelerated Repair Program

- Invitations – 28 districts, representing 50 projects
- SOI Removals – three districts, representing five projects
- Approved for Project Funding Agreements – 26 districts, representing 47 projects
- Active Projects – 25 districts, representing 45 projects
 - Scope includes 30 roofs, 13 windows/doors, and seven boilers
- Total Project Budgets – \$94,650,790
- MSBA Total Facilities Grants – \$54,662,711
- Four districts, representing seven projects, required schedule extensions following PFA approval
- 82% of projects bid within estimated budget
- 87% of projects have completed Final Audit



2013 ARP Status Chart

2012 Accelerated Repair Program

- Approved Project Funding Agreements – 24 districts, representing 36 projects
- Scope includes 21 roofs, 11 windows/doors, and seven boilers
- 100% of projects have completed Final Audit
- Final Costs Submitted: \$47,748,996
- Final MSBA Total Facilities Grant: \$28,518,764

Status of Green Repair Program

The Green Repair Program resulted in PFA authorizations totaling \$366,647,226 in Total Project Costs and \$222,889,218 in MSBA grants. Of the 189 projects, 188 have been approved for final grant payments. The final project is substantially complete and is targeting Final Audit Approval at the June 27th Board of Directors Meeting.

2016 Accelerated Repair Projects – Construction Estimate vs. 2017-2018

- **35 of 48 projects reporting bids within estimated budget**

District	School	Scope	Project Type	Bid Date	Construction Estimate*	Bid Amount*	Variance from Construction Estimate	Reimbursement Rate	Potential Grant Variance**
Carver	Carver Middle/High School	Roof, Partial Windows/Doors Boiler	DBB	Mar-17	\$4,735,668	\$3,770,000	\$965,668	57.74%	\$557,577
Auburn	Pakachoag	Roof	DBB	Mar-17	\$619,654	\$566,000	\$53,654	54.16%	\$29,059
Quincy	Merrymount	Partial Boiler	DBB	Mar-17	\$721,780	\$728,200	-\$6,420	66.12%	\$0
Quincy	Wollaston School	Partial Boiler	DBB	Mar-17	\$602,824	\$614,000	-\$11,136	66.12%	\$0
Quincy	Atherton Hough	Partial Boiler	DBB	Mar-17	\$692,906	\$499,800	\$193,106	66.12%	\$127,682
Quincy	Beechwood Knoll Elementary	Boiler	DBB	Mar-17	\$482,967	\$494,000	-\$11,033	66.12%	\$0
Agawam	Roberta G. Doering Middle School	Boiler	DBB	Apr-17	\$689,889	\$612,868	\$77,021	56.89%	\$43,817
Cambridge	Fletcher/Maynard Academy	Roof	DBB	Apr-17	\$805,564	\$597,500	\$208,154	36.99%	\$76,996
Worcester	Belmont Street Community	Windows/Doors	DBB	Apr-17	\$3,294,328	\$3,305,190	-\$10,862	78.95%	\$0
Worcester	Gerald Creamer Center	Windows/Doors Partial Boiler	DBB	Apr-17	\$2,528,821	\$2,203,200	\$325,621	78.95%	\$257,078
Worcester	Wawecus Road School	Windows/Doors	DBB	Apr-17	\$1,702,141	\$1,755,310	-\$53,169	78.95%	\$0
Worcester	Chandler Elementary Community	Windows/Doors Boilers	DBB	Apr-17	\$1,129,282	\$1,046,800	\$82,482	78.95%	\$65,120
Lawrence	High School Learning Center	Boiler	DBB	Apr-17	\$1,178,258	\$1,014,500	\$163,758	80.0%	\$131,006
Canton	Lt Peter M Hansen	Roof	DBB	May-17	\$1,415,900	\$1,276,150	\$139,750	44.48%	\$62,16
Gloucester	Gloucester High	Roof	DBB	May-17	\$4,229,171	\$2,496,350	\$1,732,821	58.19%	\$1,008,329
Sharon	Heights Elementary	Roof	DBB	May-17	\$1,855,366	\$1,277,000	\$578,366	44.68%	\$258,414
Boston	James Condon Elem	Boiler	DBB	May-17	\$807,582	\$1,683,726	-\$876,144	65.47%	\$0
Boston	William Ellery Channing	Boiler	DBB	May-17	\$739,416	\$811,950	-\$72,534	65.47%	\$0
Boston	Boston Latin	Partial Boiler	DBB	May-17	\$1,557,319	\$1,418,324	\$138,995	65.47%	\$91,000
Boston	Paul A Dever	Roof	DBB	May-17	\$2,409,686	\$1,535,022	\$874,664	65.47%	\$572,643
Boston	John W McCormack	Roof	DBB	May-17	\$2,705,770	\$1,691,978	\$1,013,972	65.47%	\$663,370
Springfield	Mary M Lynch	Roof	DBB	Jun-17	\$1,706,314	\$1,094,000	\$612,314	80.00%	\$489,851

District	School	Scope	Project Type	Bid Date	Construction Estimate*	Bid Amount*	Variance from Construction Estimate	Reimbursement Rate	Potential Grant Variance**
Springfield	Kensington Avenue	Roof	DBB	Jun-17	\$1,142,411	\$1,151,000	-\$8,859	80.00%	\$0
Northampton	Bridge Street	Partial Roof	DBB	Jun-17	\$1,214,654	\$969,012	\$245,642	54.79%	\$134,587
Northampton	Leeds	Partial Roof	DBB	Jun-17	\$1,314,290	\$1,001,190	\$313,100	54.79%	\$171,547
Springfield	Balliet Elementary School	Roof	DBB	Jun-17	\$1,665,757	\$1,668,000	-\$2,243	80.00%	\$0
Dartmouth	Dartmouth Middle	Roof	DBB	Sept-17	\$4,821,349	\$3,361,000	\$1,460,349	53.32%	\$778,658
New Bedford	John Avery Parker	Windows/Doors	DBB	Oct-17	\$6,656,886	\$5,342,500	\$1,314,386	80.00%	\$1,051,509
Springfield	Alfred G Zanetti	Windows/Doors	DBB	Nov-17	\$2,496,278	\$2,021,000	\$475,278	80.00%	\$380,222
Wayland	Loker School	Windows/Doors	DBB	Nov-17	\$1,439,682	\$1,492,000	-\$52,318	35.42%	\$0
Marshfield	Furnace Brook Middle	Roof	DBB	Nov-17	\$7,015,313	\$5,395,396	\$1,619,917	48.47%	\$785,174
Springfield	Balliet Middle	Windows/Doors	DBB	Nov-17	\$1,271,605	\$761,900	\$509,705	80.00%	\$407,764
Revere	Garfield Middle School	Boiler	DBB	Nov-17	\$1,079,851	\$686,764	\$393,087	77.47%	\$304,524
Mashpee	Quashnet School	Roof Windows/Doors	DBB	Nov-17	\$9,183,994	\$6,994,000	\$2,189,994	37.95%	\$831,103
Springfield	M Marcus Kiley Middle	Windows/Doors	DBB	Nov-17	\$8,359,041	\$5,274,500	\$3,084,541	80.00%	\$2,467,633
Swansea	Elizabeth S Brown	Windows/Doors	DBB	Nov-17	\$1,127,627	\$1,039,000	\$88,627	54.79%	\$48,559
Boxford	Spofford Pond	Roof Windows/Doors	DBB	Dec-17	\$3,905,603	\$3,718,700	\$186,903	39.84%	\$74,462
Quabog Regional	Warren Elementary	Windows/Doors	DBB	Dec-17	\$754,200	\$676,000	\$78,200	71.17%	\$55,655
Halifax	Halifax Elementary	Roof Windows/Doors	DBB	Jan-18	\$6,209,197	\$3,787,100	\$2,422,097	56.26%	\$1,362,672
North Middlesex	Squannacook	Roof	DBB	Jan-18	\$3,192,783	\$3,387,165	-\$194,382	57.11%	\$0
Somerville	Winter Hill Community	Roof Windows/Doors	DBB	Jan-18	\$3,144,096	\$1,982,000	\$1,162,096	70.32%	\$817,186
North Brookfield	North Brookfield Elem	Roof	DBB	Feb-18	\$3,306,969	\$2,897,000	\$409,969	62.67%	\$256,928
Chicopee	Bowe	Windows/Doors	DBB	31-Jan	\$2,465,020	\$2,046,140	\$418,880	79.6%	\$333,345
Chicopee	Selser	Partial Roof	DBB	31-Jan	\$1,199,872	\$701,150	\$498,722	79.6%	\$396,883
Topsfield	Proctor Elementary	Roof	DBB	7-Feb	\$3,325,548	\$3,495,270	(\$169,722)	41.1%	\$0
Topsfield	Steward Elementary	Roof	DBB	7-Feb	\$2,887,443	\$2,898,030	(\$10,587)	41.1%	\$0
North Middlesex	Hawthorne Brook	Windows/Doors	DBB	22-Feb	\$2,898,882	\$2,670,735	\$228,147	57.1%	\$130,295
North Middlesex	Varnum Brook	Roof Windows/Doors	DBB	22-Feb	\$7,155,102	\$5,675,265	\$1,479,837	57.1%	\$845,135
				Total	\$125,844,189	\$101,583,685	\$24,260,504		\$16,068,301

*The construction estimates and bid amounts do not include pre-construction services and alternates.

**These numbers are based on preliminary information received from the district and are subject to further review and calculation.

Accelerated Repair Projects – Schedule Extension Update

The MSBA has granted districts conditional extensions to their PFAs pending compliance with the following stipulations:

- The district must submit a detailed, revised, construction timeline that explains how the work will be completed at each school; and
- Any costs that are related to a district requesting an extension to the construction schedule will be the sole responsibility of the district and those costs are categorically ineligible for reimbursement by the MSBA.

Schedule delays for these districts can be attributed to local funding issues, lead time for windows, and construction delays on site. In no event have the extended schedules resulted in an increase to the Estimated Maximum Total Facilities Grant, as authorized by the Board.

One of the 43 2015 ARP Projects revised their construction schedule twice and is scheduled to be completed in 2018. Staff has reported previously on the shaded schedule extension listed below.

District	School	Scope	Original Construction Completion Date	Updated Construction Completion Date	Reason for Schedule Extension
Quincy	Beechwood Knoll Elementary	Roof Windows/Doors	8/23/16	8/28/17	The District and its consultants determined that bidding for construction in 2017 would better serve the project budget and existing facilities.
Quincy	Beechwood Knoll Elementary	Roof Windows/Doors	8/23/16	8/31/18	The District agreed to an extension of the Substantial Completion Date with the windows/doors contractor. The roof work was completed in 2017.

Four of the 48 2016 ARP Projects revised their construction schedule and are scheduled to be completed in 2018. Staff has reported previously on the shaded projects listed below.

District	School	Scope	Original Construction Completion Date	Updated Construction Completion Date	Reason for Schedule Extension
Dartmouth	Dartmouth Middle	Roof	8/30/17	8/30/18	The District and its consultants have determined that bidding for construction in 2018 would better serve the project budget and existing facilities. Construction in 2018 would also better ensure that all abatement work could occur in an unoccupied building.
North Brookfield	North Brookfield Elementary	Roof	9/5/17	8/27/18	The District and its consultants have determined that bidding for construction in 2018 would better serve the project budget and existing facilities.
Marshfield	Furnace Brook Middle	Roof	11/13/17	8/31/18	The District and its consultants have determined that bidding for construction in 2018 would better serve the existing facilities.
Revere	Garfield Elementary School	Boiler	8/25/17	9/14/18	As a result of the initial bids coming in over budget, the District and its consultants have decided to rebid this project. Construction for this project will now take place in 2018.

PROJECT VARIANCES

Core Program – Total Project Budget Update

Upon receiving the Board’s approval of the Project Scope and Budget, the MSBA and participating districts enter into a Project Funding Agreement, which establishes the Total Project Budget and the Estimated Maximum Total Facilities Grant for an approved project. Staff has reported on budget increases for the 21 projects shaded below at previous Board Meetings. No shading appears where project information is new or updated since the previous Board Meeting. In no event has the increase in budget resulted in an increase to the Estimated Maximum Total Facilities Grant, as authorized by the Board. Since the last report, no projects have been updated in the chart.

District	School	Scope	Project Funding Agreement		PFA Bid Amendment/ Final Audit		Reason for Increase to Total Project Budget
			Total Project Budget	Total Maximum Facilities Grant	Total Project Budget	Total Maximum Facilities Grant	
Andover	Bancroft ES	New	\$44,659,837	\$16,773,753	\$50,299,859	\$16,575,965	The District has appropriated additional funds to cover the costs associated with increased construction costs and additional contingencies for litigation/settlement costs and other ineligible costs.
Berlin-Boylston	Tahanto Regional HS	New	\$43,954,901	\$21,148,751	\$43,519,302	\$18,972,041	District submitted final project costs that exceeded the total project budget established at bid. Final Costs did not exceed the original total project budget established at Project Funding Agreement.
Burlington	Marshall Simonds MS	Add/ Reno	\$32,865,272	\$17,143,365	\$34,221,929	\$15,362,127	The District appropriated at its May 2012 annual town meeting through Articles 18: 19, additional funds for the costs associated with the construction of the new field complex and field lighting replacement.
Essex North Shore Agricultural & Technical School District	Essex North Shore Agricultural & Technical HS	New	\$125,000,000	\$77,500,000	\$133,770,000	\$77,500,000	The Board was informed at the March 30, 2011 meeting that the Total Project Budget had increased due to additional ineligible scope that would be funded by DCAMM.
			\$125,000,000	\$77,500,000	\$134,501,368	\$77,500,000	The District has appropriated additional funds to cover the costs associated with increased construction costs for horse tack barn renovations.
Greater New Bedford	Greater New Bedford Vocational and Technical High School	Add/ Reno	\$17,099,808	\$13,543,920	\$16,396,429	\$12,258,642	District submitted final project costs that exceeded the total project budget established at bid. Final Costs did not exceed the original total project budget established at Project Funding Agreement.
Lexington	Joseph Estabrook ES	New	\$40,792,248	\$12,250,739	\$43,392,248	\$12,148,491	The District has executed a GMP that exceeds the Construction Budget of the PFA. The District has appropriated additional funds to cover the costs associated with increased construction costs and additional contingencies.
Newburyport	Nock/Molin MS	Add/ Reno	\$26,997,326	\$13,697,934	\$28,170,749	\$12,520,326	The District has received additional funding to cover additional construction change order costs.
North Reading	North Reading MS/HS	Add/ Reno	\$107,727,074	\$49,323,123	\$123,227,074	\$49,323,123	This is a CMR project. The estimated, reconciled construction costs tracked over budget at DD (\$9,746,655 over), 60% (\$4,655,965 over), and 90% (\$15,136,846 over). A Town override vote in March 2013 obtained an additional \$15,500,000 in local funding to proceed.
Norfolk County Agricultural	Norfolk County Agricultural HS	Add/ Reno	\$28,552,385	\$15,369,712	\$30,589,078	\$13,867,050	The District has executed a Tender Agreement and Completion Agreement Contract, increasing its Total Project Budget, following the termination of its original construction contract.
Northborough	Lincoln Street ES	Add/ Reno	\$25,530,553	\$10,407,408	\$25,530,553	\$10,407,408	The MSBA Board Approved Total Project Budget increased by \$60,400 from \$25,470,153 to \$25,530,553 due to the addition of an alternate, for a new ball field added at the District’s request.
Plymouth	South HS	New	\$107,800,000	\$46,867,514	\$111,063,271	\$46,328,160	The District appropriated \$3,263,371 of additional funding to fund change order work to incorporate scope previously identified in the construction bid documents as Alternate 4 (synthetic turf field) and a portion of Alternate 5 (electrical infrastructure to support future lights at synthetic turf field). Note that the increased Total Project Budget will not increase the Maximum Facilities Grant.
Revere	Staff Sergeant James J. Hill ES	New	\$45,402,396	\$29,551,048	\$45,402,396	\$29,551,048	At Project Scope and Budget, the Total Project Budget was approved at \$44,382,396. The City of Revere has increased the land acquisition budget. Therefore, the projected total project budget at PFA has increased to \$45,402,396. Note that the MSBA grant has not changed since the Project Scope and Budget Agreement.
Salem	Saltonstall ES	Repair	\$15,503,406	\$11,794,492	\$15,752,033	\$10,709,091	The District has executed a GMP that exceeds the Construction Budget of the PFA. The District has appropriated additional funds to cover the costs associated with increased construction costs and additional contingencies.
Somerville	East Somerville Community School	Add/ Reno	\$33,185,258	\$15,237,996	\$38,006,621	\$15,237,996	At the March 28, 2012 Board Meeting, the Board approved an amendment to the PFA and a \$6.25M District loan.
Sutton	Sutton MS	Add/ Reno	\$59,945,474	\$29,843,511	\$60,130,536	\$27,002,506	The District has executed a Tender Agreement and Completion Agreement Contract, increasing its Total Project Budget, following the termination of its original construction contract.

District	School	Scope	Project Funding Agreement		PFA Bid Amendment/ Final Audit		Reason for Increase to Total Project Budget
			Total Project Budget	Total Maximum Facilities Grant	Total Project Budget	Total Maximum Facilities Grant	
Uxbridge	Uxbridge HS	New	\$43,000,000	\$22,362,328	\$44,986,479	\$22,362,328	The District has appropriated additional funds to cover the costs associated with the construction of athletic fields originally included in the PFA but which were not included in the bid as the District's construction contract would have exceeded the budget.
Weston	Field ES	New	\$31,504,146	\$8,310,510	\$32,654,146	\$8,105,549	District-approved Construction Change Orders exceeded available contingency amount.
Winchester	Winchester HS	Add/ Reno	\$129,923,146	\$44,493,270	\$131,513,741	\$43,100,458	The MSBA Board Approved total Project Budget increased due to a construction change order for additional soil abatements at Skillings Field. Note that the increased Total Project Budget will not increase the Maximum Total Facilities Grant.
Winthrop	Winthrop MS/HS	New	\$81,818,740	\$42,582,841	\$81,432,986	\$41,249,005	The MSBA Board Approved Total Project Budget increased due to revised FEMA flood plain requirements which necessitated the elevation of the new building to be raised. Note that the increased Total Project Budget will not increase the Maximum Total Facilities Grant.
Woburn	Wyman-Hurld ES	New	\$33,705,396	\$14,387,427	\$39,647,723	\$14,387,427	The District had completed a project review with its Conservation Commission and an Order of Conditions was issued on June 12, 2015. A neighborhood group appealed this Order and was reviewed by The DEP. The District experienced delays in completing its City Council vote for its appropriation and incurred additional costs.
Hopkinton	Center ES	New	\$45,629,373	\$14,058,455	\$47,129,373	\$14,058,455	The District has appropriated \$1,500,000 of additional funds to cover the costs associated with the construction of a building addition due to an unanticipated increase in enrollment.

APPENDIX A
PROJECT STATUS LIST



Date of Report: 5/25/2018

Total Projects: 327

MSBA ID	District	School	Project Phase	Project Type	Project Scope	Procurement Type	OPM	Designer	CMGC	Commissioning Consultant
200800010405	Abington	Frolio Middle School	Building Complete	Core Program	New Construction	DBB	Knight, Bagge & Anderson Inc.	Ai3 Architects LLC	Brait Builders Corp.	Horizon Engineering Associates, LLP
201606000020	Acton-Boxborough	C.T. Douglas Elementary School	Designer Selection	Core Program			-	-	-	-
201600050303	Agawam	Roberta G. Doering School	Closeout	Accelerated Repair	Boiler		STV DPM (fka STV Inc.)	Hesnor Engineering Company	-	BVH Integrated Services, P.C.
201500070005	Amesbury	Amesbury Elementary	Feasibility Study	Core Program			NV5 (fka Joslin, Lesser + Associates Inc.)	DiNisco Design, Inc.	-	-
201300080050	Amherst	Wildwood Elementary	Final Audit Approved	Core Program	New Construction	CM@R	NV5 (fka Joslin, Lesser + Associates Inc.)	JCJ Architecture, PC	Fontaine Brothers, Inc.	-
200800090003	Andover	Bancroft Elementary School	Closeout	Core Program	New Construction	CM@R	Dore & Whittier Management Partners, Inc.	Symmes Maini & McKee Associates, Inc.	Skanska USA Building, Inc.	Sebesta Blomberg & Associates, Inc.
201700090025	Andover	West Elementary School	Eligibility Period	Core Program			-	-	-	-
201500100505	Arlington	Arlington High School	Feasibility Study	Core Program			Skanska USA Building, Inc	HMFH Architects, Inc.	-	-
201700140015	Ashland	David Mindess School	Eligibility Period	Core Program			-	-	-	-
200906150020	Athol-Royalston	Athol Community Elementary School	Closeout	Core Program	New Construction	DBB	Symmes Maini & McKee Associates	Mount Vernon Group Architects, Inc.	Fontaine Brothers, Inc.	Colliers International
201706150505	Athol-Royalston	Athol High	Design Development	Accelerated Repair	Roof, Windows / Doors, Boiler		NETCO Construction Project Managers, Inc.	CSS Architects Incorporated	-	Colliers International
201400160505	Attleboro	Attleboro High	Design Development	Core Program	New Construction		Skanska USA Building, Inc	Kaestle Boos Associates, Inc.	-	Cadmus Group LLC
200800170305	Auburn	Auburn Middle School	Closeout	Core Program	New Construction	CM@R	Skanska USA Building, Inc	Lamoureux Pagano & Associates, Inc.	Fontaine Brothers, Inc.	WSP USA
201400170305	Auburn	Auburn Middle School	Final Audit Approved	Accelerated Repair	Roof, Boiler		Skanska USA Building, Inc	Dietz & Company Architects, Inc.	-	Horizon Engineering Associates, LLP Thompson & Lichtner Co., Inc.
201600170015	Auburn	Pakachoag Elementary School	Building Complete	Accelerated Repair	Roof		Hill International Company	CGKV Architects, Inc.	MDM Engineering	Thompson & Lichtner Co., Inc.
200806160505	Ayer-Shirley	Ayer Shirley Regional HS	Final Audit Approved	Core Program	Addition / Renovation	CM@R	Dore & Whittier Management Partners, Inc.	Symmes Maini & McKee Associates, Inc.	Consigli Construction Company, Inc.	WSP USA
201500260505	Belmont	Belmont High	Feasibility Study	Core Program			Daedalus Projects Inc	Perkins+Will	-	-
200806200505	Berlin-Boylston	Tahanto Regional High School	Final Audit Approved	Core Program	New Construction	DBB	PMA Construction Services	HMFH Architects, Inc.	CTA Construction Co., Inc.	Colliers International
201300300305	Beverly	Briscoe Middle	Construction	Core Program	New Construction	CM@R	HEERY	Ai3 Architects LLC	Bacon-Agostini Construction Joint Venture	Bard, Rao + Athanas Consulting Engineers, LLC
201300310505	Billerica	Billerica Memorial High School	Construction	Core Program	New Construction	CM@R	Leftfield, LLC	Perkins+Will	Shawmut Design and Construction	RDK Engineers
201508050605	Blackstone Valley Reg	Blackstone Valley	Final Audit Approved	Accelerated Repair	Roof		Watermark Environmental, Inc.	Russo Barr Associates, Inc.	Silktown Roofing	Gale Associates, Inc.
201706220008	Blackstone-Millville	John F Kennedy Elementary	OPM Selection	Accelerated Repair	Windows / Doors, Boiler		-	-	-	-
201306220010	Blackstone-Millville	Millville Elem	Final Audit Approved	Accelerated Repair	Roof	DBB	Pinck & Co., Inc.	CBI Consulting LLC	MDM Engineering	Simpson Gumpertz & Heger Inc.
201508060605	Blue Hills Voc	Blue Hills Reg Voc Tech	Construction	Core Program	Addition / Renovation		Dore & Whittier Management Partners, Inc.	Drumme Rosane Anderson, Inc.	-	Rist-Frost-Shumway Engineering, P.C.
201300350546	Boston	Boston Arts Academy	Design Development	Core Program	New Construction		PMA Construction Services	Perkins Eastman/DPC	-	Symmes, Maini & McKee Associates
201500350052	Boston	Charles Sumner Elementary School	Building Complete	Accelerated Repair	Windows / Doors		P3 Inc.	Dietz & Company Architects, Inc.	Lambrian Construction Corp.	Simpson Gumpertz & Heger Inc.



201700350036	Boston	Carter Developmental Center	Eligibility Period	Core Program			-	-	-	-
201500350020	Boston	Curley K-8 School Upper	Building Complete	Accelerated Repair	Windows / Doors		P3 Inc.	Dietz & Company Architects, Inc.	GWV, Inc.	Simpson Gumpertz & Heger Inc.
201500350072	Boston	David A. Ellis Elementary School	Building Complete	Accelerated Repair	Windows / Doors		P3 Inc.	Dietz & Company Architects, Inc.	GWV, Inc.	Simpson Gumpertz & Heger Inc.
201500350080	Boston	Donald Mckay	Building Complete	Accelerated Repair	Windows / Doors		P3 Inc.	Dietz & Company Architects, Inc.	Paul J. Rogan Co., Inc.	Simpson Gumpertz & Heger Inc.
201500350651	Boston	Dorchester Academy	Building Complete	Accelerated Repair	Windows / Doors		P3 Inc.	Dietz & Company Architects, Inc.	Lambrian Construction Corp.	Simpson Gumpertz & Heger Inc.
201500350415	Boston	Grover Cleveland	Building Complete	Accelerated Repair	Windows / Doors		P3 Inc.	Dietz & Company Architects, Inc.	Paul J. Rogan Co., Inc.	Simpson Gumpertz & Heger Inc.
201600350179	Boston	John W. McCormack Middle School	Building Complete	Accelerated Repair	Roof		NV5 (fka Joslin, Lesser + Associates Inc.)	ICON architecture, inc.	Gibson Roofs, Inc.	Simpson Gumpertz & Heger Inc.
201600350268	Boston	Paul A. Dever Elementary School	Building Complete	Accelerated Repair	Roof		NV5 (fka Joslin, Lesser + Associates Inc.)	ICON architecture, inc.	Gibson Roofs, Inc.	Simpson Gumpertz & Heger Inc.
201500350380	Boston	Young Achievers Science and Math Pilot K-8 School	Building Complete	Accelerated Repair	Windows / Doors		P3 Inc.	Dietz & Company Architects, Inc.	Lockheed Window Corporations	Simpson Gumpertz & Heger Inc.
201000350074	Boston	Henry Dearborn Middle School	Building Complete	Core Program	New Construction	CM@R	Daedalus Projects Inc	Jonathan Levi Architects LLC	Gilbane Building Company	Symmes, Maini & McKee Associates
201600350560	Boston	Boston Latin School	Construction	Accelerated Repair	Boiler		NV5 (fka Joslin, Lesser + Associates Inc.)	ICON architecture, inc.	-	Rist-Frost-Shumway Engineering, P.C.
201700350052	Boston	Charles Sumner Elementary School	Building Complete	Accelerated Repair	Boiler		Vertex Construction Services	The S/L/A/M Collaborative	-	Rist-Frost-Shumway Engineering, P.C.
201700350178	Boston	John Marshall	Schematic Design	Accelerated Repair	Windows / Doors		Vertex Construction Services	The S/L/A/M Collaborative	-	Simpson Gumpertz & Heger Inc.
201700350530	Boston	East Boston High School	Construction	Accelerated Repair	Boiler		Vertex Construction Services	The S/L/A/M Collaborative	-	Rist-Frost-Shumway Engineering, P.C.
201700350229	Boston	Maurice J. Tobin K-8 School	Construction	Accelerated Repair	Boiler		Vertex Construction Services	The S/L/A/M Collaborative	-	Rist-Frost-Shumway Engineering, P.C.
201700350141	Boston	Hugh R. O'Donnell Elementary School	Construction	Accelerated Repair	Boiler		Vertex Construction Services	The S/L/A/M Collaborative	-	Rist-Frost-Shumway Engineering, P.C.
201000350565	Boston	Quincy Upper School	Feasibility Study	Core Program			Skanska USA Building, Inc	HMFH Architects, Inc.	-	-
201600350146	Boston	James Condon Elementary	Construction	Accelerated Repair	Boiler		NV5 (fka Joslin, Lesser + Associates Inc.)	ICON architecture, inc.	-	Rist-Frost-Shumway Engineering, P.C.
201700350366	Boston	William E. Russell Elementary School	Construction	Accelerated Repair	Roof		Vertex Construction Services	The S/L/A/M Collaborative	-	Simpson Gumpertz & Heger Inc.
201600350360	Boston	William E. Channing Elementary School	Construction	Accelerated Repair	Boiler		NV5 (fka Joslin, Lesser + Associates Inc.)	ICON architecture, inc.	-	Rist-Frost-Shumway Engineering, P.C.
201400360010	Bourne	Peebles Elementary School	Construction	Core Program	New Construction	DBB	Symmes Maini & McKee Associates, Inc.	Flansburgh Associates, Inc.	Brait Builders Corp.	BVH Integrated Services, P.C.
201600380013	Boxford	Spofford Pond	Building Complete	Accelerated Repair	Roof, Windows / Doors		NETCO Construction Project Managers, Inc.	Russo Barr Associates, Inc.	Greenwood Industries, Inc.	CBI Consulting LLC
201300400305	Braintree	East Middle School	Construction	Core Program	Addition / Renovation	CM@R	Hill International Company	Miller Dyer Spears Inc.	Shawmut Design and Construction	Fitzemeyer & Tocci Associates, Inc.
201600400310	Braintree	South Middle School	Designer Selection	Core Program			Hill International Company	-	-	-
201606250002	Bridgewater-Raynham	Mitchell Elementary School	Feasibility Study	Core Program			Daedalus Projects Inc	-	-	-
201409100705	Bristol County Agr	Bristol County Agr High	Schematic Design	Core Program	Addition / Renovation		Colliers International	HMFH Architects, Inc.	-	-
201708100605	Bristol-Plymouth Voc Tech	Bristol-Plymouth Vocational Technical	Eligibility Period	Core Program			-	-	-	-
201400440421	Brockton	Ashfield Middle School	Building Complete	Accelerated Repair	Roof, Boiler		Architectural Consulting Group, LLC	Tighe & Bond, Inc.	-	Rist-Frost-Shumway Engineering, P.C. Simpson Gumpertz & Heger Inc.
201400440080	Brockton	Barrett Russell School	Closeout	Accelerated Repair	Windows / Doors		Architectural Consulting Group, LLC	Tighe & Bond, Inc.	Lockheed Window Corporations	Simpson Gumpertz & Heger Inc.
201400440010	Brockton	Brookfield	Building Complete	Accelerated Repair	Roof		Architectural Consulting Group, LLC	Tighe & Bond, Inc.	-	Simpson Gumpertz & Heger Inc.



201400440035	Brockton	Gilmore	Building Complete	Accelerated Repair	Roof, Boiler		Architectural Consulting Group, LLC	Tighe & Bond, Inc.	-	Rist-Frost-Shumway Engineering, P.C. Simpson Gumpertz & Heger Inc.
201100460015	Brookline	Edward Devotion	Construction	Core Program	Addition / Renovation	CM@R	Town Employee	HMFH Architects, Inc.	Shawmut Design and Construction	Consulting Engineering Services, LLC
201500490090	Cambridge	Fletcher Maynard Academy	Final Audit Approved	Accelerated Repair	Boiler		Skanska USA Building, Inc	TSKP Studio, LLC	CAM HVAC & Construction, Inc.	Fitzemeyer & Tocci Associates, Inc.
201600490090	Cambridge	Fletcher Maynard Academy	Building Complete	Accelerated Repair	Roof		Arcadis U.S., Inc.	HAKS Engineers, P.C.	John F. Shea Company, Inc.	Gale Associates, Inc.
201500490040	Cambridge	Kennedy-Longfellow School	Closeout	Accelerated Repair	Roof		Skanska USA Building, Inc	TSKP Studio, LLC	Greenwood Industries, Inc.	Thompson & Lichtner Co., Inc.
201600500012	Canton	Lt Peter M Hansen	Closeout	Accelerated Repair	Roof		Watermark Environmental, Inc.	Kaestle Boos Associates, Inc.	J.D. Rivet & Co., Inc.	Simpson Gumpertz & Heger Inc.
201408150605	Cape Cod Region Voc Tech	Cape Cod Region Voc Tech	Design Development	Core Program	New Construction	DBB	Colliers International	Drummey Rosane Anderson, Inc.	-	RDK Engineers
201300520015	Carver	Carver Elementary School	Construction	Core Program	New Construction	DBB	PMA Construction Services	HMFH Architects, Inc.	CTA Construction Co., Inc.	Symmes, Maini & McKee Associates
201600520405	Carver	Carver Middle/High School	Closeout	Accelerated Repair	Roof, Windows / Doors, Boiler		Leffield, LLC	Johnson Roberts Associates, Inc.	J.J. Cardosi, Inc.	Symmes, Maini & McKee Associates
201506350505	Central Berkshire	Wahconah Regional High	Feasibility Study	Core Program			Skanska USA Building, Inc	Drummey Rosane Anderson, Inc.	-	-
200800570050	Chelsea	Clark Avenue School	Construction	Core Program	New Construction	CM@R	Pinck & Co., Inc.	HMFH Architects, Inc.	W. T. Rich Company Inc.	Cannon Design
201500610010	Chicopee	Belcher Elementary School	Closeout	Accelerated Repair	Roof		NV5 (fka Joslin, Lesser + Associates Inc.)	Kaestle Boos Associates, Inc.	J.D. Rivet & Co., Inc.	Building Enclosure Associates, LLC
200900610021	Chicopee	Chicopee Academy	Closeout	Core Program	Renovation	DBB	Arcadis U.S., Inc.	Caolo & Bieniek Associates, Inc.	Fontaine Brothers, Inc.	Symmes, Maini & McKee Associates
201500610310	Chicopee	Dupont Middle	Closeout	Accelerated Repair	Roof		NV5 (fka Joslin, Lesser + Associates Inc.)	Kaestle Boos Associates, Inc.	J.D. Rivet & Co., Inc.	Building Enclosure Associates, LLC
201600610050	Chicopee	Fairview Veterans Memorial Middle School	Design Development	Accelerated Repair	Roof		Compass Project Management, Inc.	Turowski2 Architecture, Inc.	J.D. Rivet & Co., Inc.	Thompson & Lichtner Co., Inc.
201600610015	Chicopee	Patrick E. Bowe Elementary School	Design Development	Accelerated Repair	Windows / Doors		Compass Project Management, Inc.	Turowski2 Architecture, Inc.	-	Thompson & Lichtner Co., Inc.
201400630010	Clarksburg	Clarksburg Elementary School	Closeout	Core Program	Addition / Renovation	DBB	PCA 360	Jones Whitsett Architects, Inc.	-	-
201500710032	Danvers	Ivan G Smith	Feasibility Study	Core Program			PMA Construction Services	Tappe Associates, Inc.	-	-
201600720050	Dartmouth	Dartmouth Middle School	Building Complete	Accelerated Repair	Roof		Atlantic Construction and Management, Inc.	CSS Architects Incorporated	Greenwood Industries, Inc.	CBI Consulting LLC
201200730005	Dedham	Early Childhood Center	Construction	Core Program	New Construction	DBB	Construction Monitoring Services, Inc.	Knight, Bagge & Anderson, Inc.	H.V. Collins Co., Inc.	Symmes, Maini & McKee Associates
201500740015	Deerfield	Deerfield Elementary	Final Audit Approved	Accelerated Repair	Roof		Pinck & Co., Inc.	Raymond Design Associates, Inc.	MDM Engineering	Russo Barr Associates, Inc.
201506450305	Dennis-Yarmouth	Mattacheese Middle Sch	Feasibility Study	Core Program			PMA Construction Services	Perkins Eastman/DPC	-	-
200800790505	Dracut	Dracut Senior High School	Final Audit Approved	Core Program	Addition / Renovation	DBB	Hill International Company	Mount Vernon Group Architects, Inc.	CTA Construction Co., Inc.	RDK Engineers
201700830005	East Bridgewater	Central Elementary School	OPM Selection	Accelerated Repair	Boiler		PMA Construction Services	-	-	-
201700870013	East Longmeadow	Meadow Brook	Construction	Accelerated Repair	Windows / Doors		Vertex Construction Services	Kaestle Boos Associates, Inc.	-	Building Enclosure Associates, LLC
201400860010	Easthampton	Maple Elementary School	Schematic Design	Core Program	New Construction		Colliers International	Caolo & Bieniek Associates, Inc.	-	-
201600880003	Easton	Center School	OPM Selection	Core Program			-	-	-	-
201400930028	Everett	George Keverian School	Feasibility Study	Core Program			Symmes Maini & McKee Associates, Inc.	Mount Vernon Group Architects, Inc.	-	-
201500940305	Fairhaven	Hastings Middle	Final Audit Approved	Accelerated Repair	Roof		PCA 360	CGKV Architects, Inc.	Capeway Roofing Systems, Inc.	Gale Associates, Inc.
201400950505	Fall River	B .M. C. Durfee High School	Design Development	Core Program	Addition / Renovation		Leffield, LLC	Ai3 Architects LLC	-	Jacobs Engineering Group Inc.



201700950140	Fall River	James Tansey Elementary School	Schematic Design	Accelerated Repair	Windows / Doors, Boiler	-	-	-	-
201700950145	Fall River	Samuel Watson Elementary School	Schematic Design	Accelerated Repair	Roof, Windows / Doors, Boiler	-	-	-	-
201400960405	Falmouth	Lawrence School	Closeout	Accelerated Repair	Windows / Doors	PMA Construction Services	CIVITECTS PC	GVW, Inc.	Gale Associates, Inc.
201600970016	Fitchburg	Crocker Elementary School	OPM Selection	Core Program		-	-	-	-
201500990015	Foxborough	Mabelle M. Burrell Elementary School	Schematic Design	Core Program	New Construction	Colliers International	Kaestle Boos Associates, Inc.	-	-
201501000305	Framingham	Fuller Middle	Feasibility Study	Core Program		Symmes Maini & McKee Associates, Inc.	Jonathan Levi Architects LLC	-	-
200901010505	Franklin	Franklin High School	Final Audit Approved	Core Program	New Construction - Model School	DBB	Daedalus Projects Inc	Ai3 Architects LLC	Bacon-Agostini Construction Joint Venture Consulting Engineering Services, LLC
201408180605	Franklin County	Franklin County Technical	Final Audit Approved	Accelerated Repair	Windows / Doors	Colliers International	Habeeb & Associates Architects, Inc.	Gardner Construction & Industrial Services	CBI Consulting LLC
201401030001	Gardner	Elm Street School	Closeout	Accelerated Repair	Windows / Doors, Boiler	Hill International Company	ICON architecture, inc.	Lockheed Window Corporations	Fitzemeyer & Tocci Associates, Inc. Thompson & Lichtner Co., Inc.
201601030020	Gardner	Waterford Street	Designer Selection	Core Program		Colliers International	-	-	-
200901050010	Georgetown	Penn Brook Elementary School	Closeout	Core Program	New Construction	DBB	Municipal Building Consultants, Inc.	Drummeey Rosane Anderson, Inc.	Brait Builders Corp. Rist-Frost-Shumway Engineering, P.C.
201406740050	Gill-Montague	Sheffield Elementary School	Final Audit Approved	Accelerated Repair	Windows / Doors, Boiler	NETCO Construction Project Managers, Inc.	The S/L/A/M Collaborative	Gardner Construction & Industrial Services	CBI Consulting LLC
201601070020	Gloucester	East Gloucester Elementary	OPM Selection	Core Program		-	-	-	-
201601070505	Gloucester	Gloucester High School	Building Complete	Accelerated Repair	Roof	P3 Inc.	Baker/Wohl Architects, Inc.	Stanley Roofing Company, Inc.	CBI Consulting LLC
200901070050	Gloucester	West Parish Elementary School	Closeout	Core Program	New Construction	CM@R	Knight, Bagge & Anderson Inc.	Dore & Whittier Management Partners, LLC W. T. Rich Company Inc.	Fitzemeyer & Tocci Associates, Inc.
201701100030	Grafton	North Street Elementary School	Schematic Design	Accelerated Repair	Windows / Doors	Arcadis U.S., Inc.	Dietz & Company Architects, Inc.	-	Building Enclosure Associates, LLC
201201110010	Granby	West Street	Construction	Core Program	Addition / Renovation	DBB	Colliers International	Jones Whitsett Architects, Inc.	Fontaine Brothers, Inc. Rist-Frost-Shumway Engineering, P.C.
201708210605	Greater Fall River	Diman Regional Vocational Technical High	Eligibility Period	Core Program		-	-	-	-
200908280605	Greater Lowell Voc Tec	Gr Lowell Regional Vocational Technical	Closeout	Core Program	Addition / Renovation	CM@R	NV5 (fka Joslin, Lesser + Associates Inc.)	Knight, Bagge & Anderson, Inc.	Consigli Construction Company, Inc. Horizon Engineering Associates, LLP
201501140010	Greenfield	Federal Street School	Closeout	Accelerated Repair	Roof, Windows / Doors, Boiler	exPERTcon, Inc.	Tighe & Bond, Inc.	Kurtz, Inc.	Colliers International
201401140030	Greenfield	Green River	Closeout	Accelerated Repair	Roof, Windows / Doors, Boiler	Arcadis U.S., Inc.	Baker/Wohl Architects, Inc.	RAC Builders, Inc.	CBI Consulting LLC
200901140505	Greenfield	Greenfield High School	Final Audit Approved	Core Program	New Construction	CM@R	Construction Monitoring Services, Inc.	Dore & Whittier Management Partners, LLC Shawmut Design and Construction	BVH Integrated Services, P.C.
201706730010	Groton-Dunstable	Florence Roche School	Eligibility Period	Core Program		-	-	-	-
201601180005	Halifax	Halifax Elementary School	Construction	Accelerated Repair	Roof, Windows / Doors	Vertex Construction Services	Habeeb & Associates Architects, Inc.	Capeway Roofing Systems, Inc.	Russo Barr Associates, Inc.
201301220015	Hanover	Sylvester Elementary School	Construction	Core Program	Addition / Renovation	DBB	P3 Inc.	Mount Vernon Group Architects, Inc.	Brait Builders Corp. Horizon Engineering Associates, LLP
201501250005	Harvard	Hildreth Elementary School	Approved Project Vote Pending	Core Program	New Construction	CM@R	NV5 (fka Joslin, Lesser + Associates Inc.)	Arrowstreet Inc.	Shawmut Design and Construction Bard, Rao + Athanas Consulting Engineers, LLC
201201280035	Haverhill	Caleb Dustin Hunking	Building Complete	Core Program	New Construction	CM@R	NV5 (fka Joslin, Lesser + Associates Inc.)	JCJ Architecture, PC	Shawmut Design and Construction Colliers International
201101280100G	Haverhill	Consentino	Final Audit Approved	Green Repair	Windows / Doors	DBB	Vertex Construction Services	CSS Architects Incorporated	New England Builders & Contractors, Inc. RDK Engineers Russo Barr Associates, Inc.



201101280085G	Haverhill	John G Whittier	Final Audit Approved	Green Repair	Windows / Doors	DBB	Vertex Construction Services	CSS Architects Incorporated	New England Builders & Contractors, Inc.	Russo Barr Associates, Inc.
201101280075G	Haverhill	Tilton	Final Audit Approved	Green Repair	Roof	DBB	Vertex Construction Services	CSS Architects Incorporated	Titan Roofing, Inc.	Russo Barr Associates, Inc.
201101280080G	Haverhill	Walnut Square	Final Audit Approved	Green Repair	Roof, Windows / Doors	DBB	Vertex Construction Services	CSS Architects Incorporated	Titan Roofing, Inc.	RDK Engineers Russo Barr Associates, Inc.
201001310410	Hingham	Hingham Middle School	Final Audit Approved	Core Program	New Construction - Model School	DBB	Knight, Bagge & Anderson Inc.	Ai3 Architects LLC	Brait Builders Corp.	Foreman Building Commissioning, LP
200801330505	Holbrook	Holbrook Junior-Senior High School	Building Complete	Core Program	New Construction	CM@R	Symmes Maini & McKee Associates, Inc.	Flansburgh Associates, Inc.	Consigli Construction Company, Inc.	Consulting Engineering Services, LLC
201401370045	Holyoke	E N White Elementary	Closeout	Accelerated Repair	Boiler		STV DPM (fka STV Inc.)	RDK Engineering	Adams Plumbing and Heating, Inc.	BVH Integrated Services, P.C.
201701370010	Holyoke	H.B. Lawrence School	Feasibility Study	Core Program			Pinck & Co., Inc.	Jones Whitsett Architects, Inc.	-	R.J. Kenney Associates, Inc.
201701370040	Holyoke	Kelly Elementary	Design Development	Accelerated Repair			Hill International Company	-	-	-
201701370055	Holyoke	Lt Clayre Sullivan Elementary	Design Development	Accelerated Repair	Windows / Doors		Hill International Company	-	-	Consulting Engineering Services, LLC R.J. Kenney Associates, Inc.
201401370025	Holyoke	William G. Morgan	Closeout	Accelerated Repair	Boiler		STV DPM (fka STV Inc.)	RDK Engineering	Adams Plumbing and Heating, Inc.	BVH Integrated Services, P.C.
201701370025	Holyoke	William G. Morgan	Design Development	Accelerated Repair	Windows / Doors		Hill International Company	-	-	R.J. Kenney Associates, Inc.
201201370605	Holyoke	Wm J Dean Vocational Technical High	Final Audit Approved	Science Lab Initiative	Addition / Renovation	DBB	Skanska USA Building, Inc	Kaestle Boos Associates, Inc.	RAC Builders, Inc.	BVH Integrated Services, P.C.
201301390005	Hopkinton	Center	Construction	Core Program	New Construction	CM@R	Compass Project Management, Inc.	Drummeay Rosane Anderson, Inc.	Colantonio, Inc.	RDK Engineers
200801410410	Hudson	David J. Quinn Middle School	Final Audit Approved	Core Program	New Construction	DBB	PMA Construction Services	OMR Architects, Inc.	Bacon-Agostini Construction Joint Venture	WSP USA
201401410007	Hudson	Mulready Elementary	Final Audit Approved	Accelerated Repair	Roof		Atlantic Construction and Management, Inc.	Raymond Design Associates, Inc.	Capeway Roofing Systems, Inc.	CBI Consulting LLC
201401440015	Ipswich	Winthrop Elementary School	Closeout	Core Program	New Construction		PMA Construction Services	Perkins Eastman/DPC	-	-
201701490008	Lawrence	Community Day Arlington	Construction	Accelerated Repair	Roof, Boiler		Pinck & Co., Inc.	Johnson Roberts Associates, Inc.	-	Symmes, Maini & McKee Associates
201701490040	Lawrence	Francis M. Leahy Elementary School	Eligibility Period	Core Program			-	-	-	-
201601490050	Lawrence	Henry K Oliver	OPM Selection	Core Program			-	-	-	-
201601490536	Lawrence	High School Learning Center	Closeout	Accelerated Repair	Boiler		Pinck & Co., Inc.	Shekar & Associates, Inc.	CAM HVAC & Construction, Inc.	Fitzmeyer & Tocci Associates, Inc.
201701490537	Lawrence	School for Exceptional Studies	Design Development	Accelerated Repair	Roof		Pinck & Co., Inc.	Johnson Roberts Associates, Inc.	-	-
201501510505	Leicester	Leicester High School	Closeout	Accelerated Repair	Roof		Hill International Company	Gale Associates, Inc.	Greenwood Industries, Inc.	Russo Barr Associates, Inc.
201601510015	Leicester	Leicester Middle	OPM Selection	Core Program			-	-	-	-
201501530025	Leominster	Johnny Appleseed Elementary School	Closeout	Accelerated Repair	Roof, Windows / Doors		NETCO Construction Project Managers, Inc.	Habeeb & Associates Architects, Inc.	GWV, Inc.	Russo Barr Associates, Inc.
201501550035	Lexington	Maria Hastings Elementary School	Design Development	Core Program	New Construction		Dore & Whittier Management Partners, Inc.	DiNisco Design, Inc.	-	Bard, Rao + Athanas Consulting Engineers, LLC
201401600505	Lowell	Lowell High	Feasibility Study	Core Program			Skanska USA Building, Inc	Perkins Eastman/DPC	-	-
201501610020	Ludlow	Chapin Street Elementary School	Design Development	Core Program	New Construction		STV DPM (fka STV Inc.)	Mount Vernon Group Architects, Inc.	-	Horizon Engineering Associates, LLP
201501610010	Ludlow	East Street Elementary School	Closeout	Accelerated Repair	Roof, Boiler		STV DPM (fka STV Inc.)	Johnson Roberts Associates, Inc.	Westfield Construction Co., Inc.	Colliers International
201001620505	Lunenburg	Lunenburg High School	Closeout	Core Program	New Construction	CM@R	NV5 (fka Joslin, Lesser + Associates Inc.)	Tappe Associates, Inc.	Shawmut Design and Construction	Cannon Design



201401630045	Lynn	E. J. Harrington Elementary School	Final Audit Approved	Accelerated Repair	Roof		NETCO Construction Project Managers, Inc.	Habeeb & Associates Architects, Inc.	Capeway Roofing Systems, Inc.	CBI Consulting LLC
201701630055	Lynn	Hood Elementary School	Design Development	Accelerated Repair	Roof, Windows / Doors		PCA 360	Russo Barr Associates, Inc.	-	CBI Consulting LLC
201401630420	Lynn	Pickering Middle	Final Audit Approved	Core Program			Lefffield, LLC	Raymond Design Associates, Inc.	-	-
200901630305	Lynn	Thurgood Marshall Middle School	Final Audit Approved	Core Program	New Construction	CM@R	NV5 (fka Joslin, Lesser + Associates Inc.)	Raymond Design Associates, Inc.	Walsh Brothers, Inc.	Rist-Frost-Shumway Engineering, P.C.
201506980010	Manchester Essex Regional	Memorial Elementary School	Schematic Design	Core Program			Dore & Whittier Management Partners, Inc.	JCJ Architecture, PC	-	-
201701670505	Mansfield	Mansfield High School	Design Development	Accelerated Repair	Windows / Doors		Watermark Environmental, Inc.	Baker/Wohl Architects, Inc.	-	-
201501680015	Marblehead	Elbridge Gerry	Feasibility Study	Core Program			Lefffield, LLC	Raymond Design Associates, Inc.	-	-
201501700025	Marlborough	Richer	Design Development	Core Program	New Construction - Model School	DBB	Daedalus Projects Inc	Mount Vernon Group Architects, Inc.	-	WSP USA
201601710310	Marshfield	Furnace Brook Middle School	Construction	Accelerated Repair	Roof		PCA 360	CIVITECTS PC	Colantonio, Inc.	Russo Barr Associates, Inc.
201101710505	Marshfield	Marshfield High	Final Audit Approved	Core Program	New Construction - Model School	DBB	Compass Project Management, Inc.	Ai3 Architects LLC	Brait Builders Ventures	Sebesta Blomberg & Associates, Inc.
201601720035	Mashpee	Quashnet School	Construction	Accelerated Repair	Windows / Doors		exPERTcon, Inc.	Raymond Design Associates, Inc.	J.J. Cardosi, Inc.	CBI Consulting LLC
201701750005	Medfield	Dale Street	Eligibility Period	Core Program			-	-	-	-
201401750007	Medfield	Ralph Wheelock Elementary School	Closeout	Accelerated Repair	Boiler		Skanska USA Building, Inc	Hesnor Engineering Company	Performance Plumbing and Heating	RDK Engineers
201301760505	Medford	Medford High	Final Audit Approved	Accelerated Repair	Windows / Doors, Boiler	DBB	Architectural Consulting Group, LLC	Dietz & Company Architects, Inc.	NB Kenney Company, Inc	Symmes, Maini & McKee Associates
201401780017	Melrose	Hoover Elementary School	Final Audit Approved	Accelerated Repair	Windows / Doors		Colliers International	ICON architecture, inc.	GVW, Inc.	Simpson Gumpertz & Heger Inc.
201501820011	Middleborough	Memorial Early Childhood Center	Closeout	Accelerated Repair	Roof		Architectural Consulting Group, LLC	Knight, Bagge & Anderson, Inc.	MDM Engineering	Russo Barr Associates, Inc.
201401820505	Middleborough	Middleborough High	Design Development	Core Program	New Construction		Compass Project Management, Inc.	Drummey Rosane Anderson, Inc.	-	Colliers International
201101850090	Milford	Woodland	Closeout	Core Program	New Construction	CM@R	NV5 (fka Joslin, Lesser + Associates Inc.)	HMFH Architects, Inc.	Shawmut Design and Construction	Consulting Engineering Services, LLC
201601860025	Millbury	Raymond E. Shaw School	OPM Selection	Core Program			Hill International Company	-	-	-
201401870005	Millis	Clyde F Brown	Construction	Core Program	New Construction	CM@R	Compass Project Management, Inc.	Tappe Associates, Inc.	Bacon-Agostini Construction Joint Venture	Colliers International
200908300605	Minuteman Voc Tech	Minuteman Regional High School	Construction	Core Program	New Construction	CM@R	Skanska USA Building, Inc	Kaestle Boos Associates, Inc.	Gilbane Building Company	Bard, Rao + Athanas Consulting Engineers, LLC
201107129999	Monomoy	Monomoy Regional High School	Closeout	Core Program	New Construction - Model School	DBB	Skanska USA Building, Inc	Mount Vernon Group Architects, Inc.	Fontaine Brothers, Inc.	Sebesta Blomberg & Associates, Inc.
201307150505	Mount Greylock	Mt Greylock Reg High	Construction	Core Program	Addition / Renovation	CM@R	Dore & Whittier Management Partners, Inc.	Perkins Eastman/DPC	Turner Construction Company	BVH Integrated Services, P.C.
200807200020	Narragansett	Templeton Center School	Construction	Core Program	New Construction		Colliers International	Symmes Maini & McKee Associates, Inc.	Fontaine Brothers, Inc.	Fitzmeyer & Tocci Associates, Inc.
201501980305	Natick	John. F. Kennedy Middle School	Design Development	Core Program	New Construction	DBB	Compass Project Management, Inc.	Ai3 Architects LLC	-	Rist-Frost-Shumway Engineering, P.C.
201606600505	Nauset	Nauset Regional High	OPM Selection	Core Program			-	-	-	-
201301990035	Needham	Hillside Elementary School	Construction	Core Program	New Construction	DBB	Town Employee	Dore & Whittier Management Partners, LLC	Bacon Construction Co, Inc.	Rist-Frost-Shumway Engineering, P.C.
201502010063	New Bedford	Alfred J. Gomes Elementary School	Closeout	Accelerated Repair	Windows / Doors		Vertex Construction Services	-	-	CBI Consulting LLC
201502010123	New Bedford	Casimir Pulaski	Closeout	Accelerated Repair	Windows / Doors, Boiler		Vertex Construction Services	-	-	CBI Consulting LLC WSP USA



201702010015	New Bedford	Elizabeth Carter Brooks Elementary School	Design Development	Accelerated Repair	Windows / Doors, Boiler		NV5 (fka Joslin, Lesser + Associates Inc.)	Johnson Roberts Associates, Inc.	-		WSP USA
201502010078	New Bedford	Hayden/McFadden Elementary School	Closeout	Accelerated Repair	Windows / Doors, Boiler		Vertex Construction Services	-	-		CBI Consulting LLC WSP USA
201502010115	New Bedford	John Avery Parker	Closeout	Accelerated Repair	Windows / Doors, Boiler		Vertex Construction Services	-	-		-
201602010115	New Bedford	John Avery Parker	Construction	Accelerated Repair	Windows / Doors		Architectural Consulting Group, LLC	CBI Consulting LLC	-		WSP USA
200902010070	New Bedford	John Hannigan	Building Complete	Core Program	New Construction	DBB	Daedalus Projects Inc	Turowski2 Architecture, Inc.	H.V. Collins Co., Inc.		WSP USA
201502010045	New Bedford	Sgt Wm H Carney Academy	Closeout	Accelerated Repair	Windows / Doors		Vertex Construction Services	-	-		CBI Consulting LLC WSP USA
W201002019999P2	New Bedford	Taylor School at the Sea Lab Marine Science Education Center	Building Complete	Waitlist	Addition / Renovation	DBB	Architectural Consulting Group, LLC	Mount Vernon Group Architects, Inc.	M. O'Connor Contracting, Inc.		WSP USA
201102070005	Newton	A E Angier	Final Audit Approved	Core Program	New Construction	CM@R	NV5 (fka Joslin, Lesser + Associates Inc.)	DiNisco Design, Inc.	W. T. Rich Company Inc.		Fitzemeyer & Tocci Associates, Inc.
201302070025	Newton	Cabot	Construction	Core Program	Addition / Renovation	CM@R	NV5 (fka Joslin, Lesser + Associates Inc.)	DiNisco Design, Inc.	W. T. Rich Company Inc.		Colliers International
200802080005	Norfolk	Freeman-Kennedy Elementary School	Closeout	Core Program	New Construction	DBB	NV5 (fka Joslin, Lesser + Associates Inc.)	Flansburgh Associates, Inc.	Fontaine Brothers, Inc.		WSP USA
201602150015	North Brookfield	North Brookfield Elementary	Construction	Accelerated Repair	Roof		Skanska USA Building, Inc	Dietz & Company Architects, Inc.	MDM Engineering		Simpson Gumpertz & Heger Inc.
201607350030	North Middlesex	Hawthorne Brook	Construction	Accelerated Repair			Atlantic Construction and Management, Inc.	Habeeb & Associates Architects, Inc.	-		Gale Associates, Inc.
201107350505	North Middlesex	North Middlesex Reg	Building Complete	Core Program	New Construction	DBB	HEERY	Symmes Maini & McKee Associates, Inc.	CTA Construction Co., Inc.		Horizon Engineering Associates, LLP
201607350020	North Middlesex	Squannacook	Construction	Accelerated Repair			Atlantic Construction and Management, Inc.	Habeeb & Associates Architects, Inc.	-		Gale Associates, Inc.
201607350035	North Middlesex	Varnum Brook Elementary School	Construction	Accelerated Repair			Atlantic Construction and Management, Inc.	Habeeb & Associates Architects, Inc.	-		Gale Associates, Inc.
201502170003	North Reading	E. Ethel Little School	Final Audit Approved	Accelerated Repair	Roof		Compass Project Management, Inc.	HAKS Engineers, P.C.	Stanley Roofing Company, Inc.		Thompson & Lichtner Co., Inc.
201002170505	North Reading	North Reading High School	Closeout	Core Program	Addition / Renovation	CM@R	PMA Construction Services	Dore & Whittier Management Partners, LLC	Gilbane Building Company		Cannon Design
201602100005	Northampton	Bridge Street School	Closeout	Accelerated Repair	Roof		Colliers International	The S/L/A/M Collaborative	D.A. Sullivan & Sons, Inc.		CBI Consulting LLC
201602100025	Northampton	Leeds Elementary School	Closeout	Accelerated Repair	Roof		Colliers International	The S/L/A/M Collaborative	D.A. Sullivan & Sons, Inc.		CBI Consulting LLC
201102130003	Northborough	Lincoln Street	Final Audit Approved	Core Program	Addition / Renovation	DBB	Colliers International	Lamoureux Pagano & Associates, Inc.	Brait Builders Corp.		Fitzemeyer & Tocci Associates, Inc.
201502140001	Northbridge	W Edward Balmer	Schematic Design	Core Program	New Construction		Symmes Maini & McKee Associates, Inc.	Dore & Whittier Management Partners, LLC	-		-
201708530605	Northeast Metro Voc	Northeast Metro Regional Vocational	Eligibility Period	Core Program			-	-	-		-
201702180060	Norton	Henri A. Yelle Elementary School	Approved Project Vote Pending	Accelerated Repair	Windows / Doors		Architectural Consulting Group, LLC	Turowski2 Architecture, Inc.	-		-
201702180015	Norton	J C Solmonese	Approved Project Vote Pending	Accelerated Repair	Windows / Doors		Architectural Consulting Group, LLC	Turowski2 Architecture, Inc.	-		-
201702180010	Norton	L. G. Nourse Elementary School	Approved Project Vote Pending	Accelerated Repair	Windows / Doors		Architectural Consulting Group, LLC	Turowski2 Architecture, Inc.	-		-
201602230010	Orange	Dexter Park School	OPM Selection	Core Program			-	-	-		-
201402240005	Orleans	Orleans Elementary School	Final Audit Approved	Accelerated Repair	Windows / Doors		Architectural Consulting Group, LLC	Tighe & Bond, Inc.	RAC Builders, Inc.		Gale Associates, Inc.
200802260405	Oxford	Oxford Middle School	Closeout	Core Program	Repair	DBB	Diversified Project Management	CGKV Architects, Inc.	J.J. Cardosi, Inc.		Cannon Design
200802290305	Peabody	Higgins Middle School	Closeout	Core Program	New Construction	DBB	Daedalus Projects Inc	DiNisco Design, Inc.	Bacon-Agostini Construction Joint Venture		BVH Integrated Services, P.C.



201402290016	Peabody	John E. McCarthy Memorial School	Closeout	Accelerated Repair	Roof, Windows / Doors		Hill International Company	CIVITECTS PC	-	Thompson & Lichtner Co., Inc.
201502290510	Peabody	Peabody Veterans Memorial High School	Building Complete	Accelerated Repair	Roof		Municipal Building Consultants, Inc.	CIVITECTS PC	Greenwood Industries, Inc.	Thompson & Lichtner Co., Inc.
201302310010	Pembroke	Hobomock Elementary School	Final Audit Approved	Accelerated Repair	Roof	DBB	Pinck & Co., Inc.	The S/L/A/M Collaborative	Greenwood Industries, Inc.	CBI Consulting LLC
201302310015	Pembroke	North Pembroke Elementary	Final Audit Approved	Accelerated Repair	Roof	DBB	Pinck & Co., Inc.	The S/L/A/M Collaborative	Paul J. Rogan Co., Inc.	CBI Consulting LLC
201302310305	Pembroke	Pembroke Community Middle School	Final Audit Approved	Accelerated Repair	Roof	DBB	Pinck & Co., Inc.	The S/L/A/M Collaborative	Paul J. Rogan Co., Inc.	CBI Consulting LLC
201302310505	Pembroke	Pembroke High School	Final Audit Approved	Accelerated Repair	Roof	DBB	Pinck & Co., Inc.	The S/L/A/M Collaborative	Greenwood Industries, Inc.	CBI Consulting LLC
201507450505	Pentucket	Pentucket Reg Sr High	Feasibility Study	Core Program			Vertex Construction Services	Dore & Whittier Management Partners, LLC	-	-
201002360510	Pittsfield	Taconic High School	Construction	Core Program	New Construction	CM@R	Skanska USA Building, Inc	Drummey Rosane Anderson, Inc.	Gilbane Building Company	Colliers International
201202390515	Plymouth	Plymouth South High	Building Complete	Core Program	New Construction	DBB	Ted Gentry Associates, Inc	Ai3 Architects LLC	Bacon-Agostini Construction Joint Venture	Rist-Frost-Shumway Engineering, P.C.
201302420505	Provincetown	Provincetown High	Closeout	Core Program	Repair	DBB	Atlantic Construction and Management, Inc.	Raymond Design Associates, Inc.	E. Amanti & Sons, Inc.	BVH Integrated Services, P.C.
201607780005	Quabog Regional	Warren Elementary	Design Development	Accelerated Repair	Windows / Doors		NETCO Construction Project Managers, Inc.	TSKP Studio, LLC	Lockheed Window Corporations	Colliers International
201602430040	Quincy	Atherton Hough Elementary School	Building Complete	Accelerated Repair	Boiler		Hill International Company	Architectural Engineers, Inc.	E. Amanti & Sons, Inc.	Consulting Engineering Services, LLC
201502430020	Quincy	Beechwood Knoll Elementary	Construction	Accelerated Repair	Roof, Windows / Doors		Atlantic Construction and Management, Inc.	Baker/Wohl Architects, Inc.	Alpha Contracting Associates, Inc.	CBI Consulting LLC
201602430020	Quincy	Beechwood Knoll Elementary	Building Complete	Accelerated Repair	Boiler		Hill International Company	Architectural Engineers, Inc.	E. Amanti & Sons, Inc.	Consulting Engineering Services, LLC
201502430060	Quincy	Merrymount Elementary School	Building Complete	Accelerated Repair	Roof		Atlantic Construction and Management, Inc.	Baker/Wohl Architects, Inc.	Gibson Roofs, Inc.	CBI Consulting LLC
201602430060	Quincy	Merrymount Elementary School	Building Complete	Accelerated Repair	Boiler		Hill International Company	Architectural Engineers, Inc.	E. Amanti & Sons, Inc.	Consulting Engineering Services, LLC
201702430510	Quincy	North Quincy High School	Construction	Accelerated Repair	Roof		STV DPM (fka STV Inc.)	CBI Consulting LLC	-	Gale Associates, Inc.
201302430320	Quincy	Reay E. Sterling Middle School	Construction	Core Program	New Construction	CM@R	PCA 360	Ai3 Architects LLC	Bond Brothers, Inc.	Symmes, Maini & McKee Associates
201602430110	Quincy	Wollaston Elementary School	Building Complete	Accelerated Repair	Boiler		Hill International Company	Architectural Engineers, Inc.	E. Amanti & Sons, Inc.	Consulting Engineering Services, LLC
201702440020	Randolph	Elizabeth G Lyons Elementary	Eligibility Period	Core Program			-	-	-	-
201402440018	Randolph	J F Kennedy Elementary	Closeout	Accelerated Repair	Windows / Doors		STV DPM (fka STV Inc.)	Taylor & Burns, Inc.	Modern Glass & Aluminum, Inc.	Gale Associates, Inc.
201702440015	Randolph	Margaret L. Donovan Elementary School	Design Development	Accelerated Repair	Windows / Doors, Boiler		Atlantic Construction and Management, Inc.	-	-	Consulting Engineering Services, LLC Gale Associates, Inc.
201702440040	Randolph	Martin E Young Elementary	Approved Project Vote Pending	Accelerated Repair	Windows / Doors		Atlantic Construction and Management, Inc.	-	-	Gale Associates, Inc.
201402440505	Randolph	Randolph High	Closeout	Accelerated Repair	Windows / Doors		STV DPM (fka STV Inc.)	Taylor & Burns, Inc.	A&A Window Products, Inc.	Gale Associates, Inc.
201502480056	Revere	Garfield Elementary School	Building Complete	Accelerated Repair	Roof		Leftfield, LLC	Turovski2 Architecture, Inc.	Greenwood Industries, Inc.	Thompson & Lichtner Co., Inc.
201602480057	Revere	Garfield Middle School	Design Development	Accelerated Repair	Boiler		NV5 (fka Joslin, Lesser + Associates Inc.)	BLW Engineers, Inc.	Enterprise Equipment Co., Inc.	Fitzemeyer & Tocci Associates, Inc.
201002480035	Revere	Staff Sargent James J. Hill Elementary School	Building Complete	Core Program	New Construction	DBB	Hill International Company	Drummey Rosane Anderson, Inc.	CTA Construction Co., Inc.	Rist-Frost-Shumway Engineering, P.C.



201602510060	Rockland	Jefferson Elementary School	Designer Selection	Core Program							
201402620505	Saugus	Saugus High	Design Development	Core Program	New Construction	CM@R	PMA Construction Services	HMFH Architects, Inc.	Suffolk Construction Company	Consulting Engineering Services, LLC	
201202640305	Scituate	Gates Intermediate School	Building Complete	Core Program	New Construction	DBB	Daedalus Projects Inc	Dore & Whittier Management Partners, LLC	Bacon-Agostini Construction Joint Venture	WSP USA	
201702650015	Seekonk	Mildred Aitken Elementary School	Approved Project Vote Pending	Accelerated Repair	Windows / Doors		Colliers International	Gale Associates, Inc.	-	Thompson & Lichtner Co., Inc.	
201602660015	Sharon	Heights Elementary School	Closeout	Accelerated Repair	Roof		PCA 360	Knight, Bagge & Anderson, Inc.	Greenwood Industries, Inc.	Simpson Gumpertz & Heger Inc.	
201602660505	Sharon	Sharon High	Designer Selection	Core Program			PMA Construction Services	-	-	-	
201502710005	Shrewsbury	Beal School	Feasibility Study	Core Program			PMA Construction Services	Lamoureux Pagano & Associates, Inc.	-	-	
201702730305	Somerset	Somerset Middle School	Eligibility Period	Core Program			-	-	-	-	
200811119999	Somerset-Berkley	Somerset Berkley Regional High School	Final Audit Approved	Core Program	New Construction - Model School	DBB	Skanska USA Building, Inc	Ai3 Architects LLC	Bacon-Agostini Construction Joint Venture	Horizon Engineering Associates, LLP	
200902740111E	Somerville	East Somerville Community School at Cummings	Closeout	Core Program	Renovation	CM@R	PMA Construction Services	Maguire Group Inc.	Gilbane Building Company	Foreman Building Commissioning, LP	
201302740505	Somerville	Somerville High	Design Development	Core Program	Addition / Renovation		PMA Construction Services	Symmes Maini & McKee Associates, Inc.	Suffolk Construction Company	WSP USA	
201602740120	Somerville	Winter Hill Community	Building Complete	Accelerated Repair	Roof, Windows / Doors		Municipal Building Consultants, Inc.	TSKP Studio, LLC	-	Thompson & Lichtner Co., Inc.	
200902780015	South Hadley	Plains School	Final Audit Approved	Core Program	New Construction	DBB	Arcadis U.S., Inc.	Jones Whitsett Architects, Inc.	Fontaine Brothers, Inc.	Colliers International	
201407650505	Southern Berkshire	Mount Everett High School	Final Audit Approved	Accelerated Repair	Roof, Boiler		NETCO Construction Project Managers, Inc.	Dietz & Company Architects, Inc.	Titan Roofing, Inc.	Colliers International	
200908760605	Southern Worcester Cty VT	Bay Path Regional Vocational Technical High School	Final Audit Approved	Core Program	Addition / Renovation	CM@R	HEERY	Kaestle Boos Associates, Inc.	Consigli Construction Company, Inc.	RDK Engineers	
201107660305	Southwick-Tolland	Powder Mill School	Final Audit Approved	Core Program	Repair	DBB	Colliers International	JCJ Architecture, PC	PDS Engineering and Construction, Inc.	BVH Integrated Services, P.C.	
201107660505	Southwick-Tolland	Southwick Regional School	Closeout	Core Program	Addition / Renovation	DBB	Colliers International	JCJ Architecture, PC	Fontaine Brothers, Inc.	BVH Integrated Services, P.C.	
200807660010	Southwick-Tolland	Woodland School	Final Audit Approved	Core Program	Addition / Renovation	DBB	Colliers International	JCJ Architecture, PC	PDS Engineering and Construction, Inc.	BVH Integrated Services, P.C.	
201602810095	Springfield	Alfred G. Zanetti Montessori Magnet School	Design Development	Accelerated Repair	Windows / Doors		Leftfield, LLC	Gale Associates, Inc.	-	Building Enclosure Associates, LLC	
201602810360	Springfield	Balliet Middle School	Design Development	Accelerated Repair	Windows / Doors		Leftfield, LLC	Gale Associates, Inc.	-	Building Enclosure Associates, LLC	
201502810025	Springfield	Brightwood School	Schematic Design	Core Program			Skanska USA Building, Inc	DiNisco Design, Inc.	-	-	
201502810035	Springfield	Daniel B Brunton	Building Complete	Accelerated Repair	Windows / Doors		Skanska USA Building, Inc	CBI Consulting LLC	Five Star Building Corp.	Building Enclosure Associates, LLC	
201102810030E	Springfield	Elias Brookings	Final Audit Approved	Core Program	New Construction	CM@R	Arcadis U.S., Inc.	Drummey Rosane Anderson, Inc.	Morganti/Aquadro & Cerruti	BVH Integrated Services, P.C.	
201402810328	Springfield	John F Kennedy Middle	Closeout	Accelerated Repair	Windows / Doors		Arcadis U.S., Inc.	Gale Associates, Inc.	Lambrian Construction Corp.	Building Enclosure Associates, LLC	
201402810110	Springfield	Kensington Avenue School	Closeout	Accelerated Repair	Windows / Doors		Arcadis U.S., Inc.	Gale Associates, Inc.	Alpha Contracting Associates, Inc.	Building Enclosure Associates, LLC	
201602810110	Springfield	Kensington Avenue School	Construction	Accelerated Repair	Roof		Leftfield, LLC	Gale Associates, Inc.	Greenwood Industries, Inc.	Building Enclosure Associates, LLC	
201602810330	Springfield	M Marcus Kiley Middle	Design Development	Accelerated Repair	Windows / Doors		Leftfield, LLC	Gale Associates, Inc.	-	Building Enclosure Associates, LLC	
201602810140	Springfield	Mary M Lynch	Construction	Accelerated Repair	Roof		Leftfield, LLC	Gale Associates, Inc.	Greenwood Industries, Inc.	Building Enclosure Associates, LLC	



201502810155	Springfield	Mary M Walsh	Closeout	Accelerated Repair	Windows / Doors		Skanska USA Building, Inc	CBI Consulting LLC	PDS Engineering and Construction, Inc.	Building Enclosure Associates, LLC
201702810355	Springfield	South End Middle School	Approved Project Vote Pending	Accelerated Repair	Windows / Doors		P3 Inc.	CGKV Architects, Inc.	-	-
201502810550	Springfield	Springfield Public Day High School	Closeout	Accelerated Repair	Windows / Doors		Skanska USA Building, Inc	CBI Consulting LLC	Westfield Construction Co., Inc.	Building Enclosure Associates, LLC
201502810350	Springfield	STEM Middle Academy	Building Complete	Accelerated Repair	Roof		Skanska USA Building, Inc	CBI Consulting LLC	Westfield Construction Co., Inc.	Building Enclosure Associates, LLC
201602810015	Springfield	Thomas M Balliet	Construction	Accelerated Repair	Roof		Lefffield, LLC	Gale Associates, Inc.	W.J. Mountford Company	Building Enclosure Associates, LLC
201602810045	Springfield	William N. DeBerry	OPM Selection	Core Program			-	-	-	-
201402850025	Stoughton	Joseph H. Gibbons Elementary School	Closeout	Accelerated Repair	Roof, Windows / Doors		Atlantic Construction and Management, Inc.	CGKV Architects, Inc.	A&A Window Products, Inc.	Building Enclosure Associates, LLC
201302850505	Stoughton	Stoughton High	Construction	Core Program	New Construction	CM@R	Compass Project Management, Inc.	Drummey Rosane Anderson, Inc.	Consigli Construction Company, Inc.	Fitzemeyer & Tocci Associates, Inc.
201502850020	Stoughton	West Elementary School	Construction	Accelerated Repair	Windows / Doors		Compass Project Management, Inc.	CBI Consulting LLC	Alpha Contracting Associates, Inc.	Building Enclosure Associates, LLC
201702910010	Swampscott	Hadley	Eligibility Period	Core Program			-	-	-	-
201602920006	Swansea	Elizabeth S. Brown Elementary School	Construction	Accelerated Repair	Windows / Doors		Skanska USA Building, Inc	Tighe & Bond, Inc.	-	Simpson Gumpertz & Heger Inc.
201502930007	Taunton	Edmund Hatch Bennett	Closeout	Accelerated Repair	Roof, Windows / Doors		Arcadis U.S., Inc.	CSS Architects Incorporated	TRAC Builders, Inc.	Gale Associates, Inc.
201502930042	Taunton	Joseph H Martin	Closeout	Accelerated Repair	Roof, Windows / Doors		Arcadis U.S., Inc.	CSS Architects Incorporated	TRAC Builders, Inc.	Gale Associates, Inc.
201402930015	Taunton	Mulcahey Elementary School	Design Development	Core Program	New Construction	DBB	CGA Project Management	Dore and Whittier Architects, Inc.	-	Consulting Engineering Services, LLC
201502950025	Tewksbury	Louise Davy Trahan Elementary School	Feasibility Study	Core Program			HEERY	Flansburgh Associates, Inc.	-	-
200802950505	Tewksbury	Tewksbury Memorial High School	Closeout	Core Program	New Construction - Model School	DBB	HEERY	Symmes Maini & McKee Associates, Inc.	CTA Ventures	Sebesta Blomberg & Associates, Inc.
201502960005	Tisbury	Tisbury Elementary School	Closeout	Core Program	New Construction		Daedalus Projects Inc	Turowski2 Architecture, Inc.	-	-
201602980005	Topsfield	Proctor Elementary School	Construction	Accelerated Repair	Roof		Compass Project Management, Inc.	The S/L/A/M Collaborative	-	Gale Associates, Inc.
201602980010	Topsfield	Steward Elementary School	Construction	Accelerated Repair	Roof		Compass Project Management, Inc.	The S/L/A/M Collaborative	-	Gale Associates, Inc.
201507730025	Triton	Pine Grove	Construction	Core Program	Addition / Renovation		Pinck & Co., Inc.	Dore & Whittier Management Partners, LLC	W. T. Rich Company Inc.	BVH Integrated Services, P.C.
201403010505	Tyngsborough	Tyngsborough High School	Final Audit Approved	Accelerated Repair	Roof, Boiler		Municipal Building Consultants, Inc.	CSS Architects Incorporated	Ambient Temperature Corporation Greenwood Industries, Inc.	Colliers International
200907750305	Wachusett	Mountview Middle School	Building Complete	Core Program	New Construction	DBB	Town Employee	Lamoureux Pagano & Associates, Inc.	CTA Construction Co., Inc.	Fitzemeyer & Tocci Associates, Inc.
201403080505	Waltham	Waltham Sr High	Feasibility Study	Core Program			NV5 (fka Joslin, Lesser + Associates Inc.)	Symmes Maini & McKee Associates, Inc.	-	-
201503100003	Wareham	John William Decas	Closeout	Accelerated Repair	Roof, Boiler		Colliers International	ICON architecture, inc.	Nadeau Corporation	Bard, Rao + Athanas Consulting Engineers, LLC Gale Associates, Inc.
201503100017	Wareham	Minot Forest	Feasibility Study	Core Program			PMA Construction Services	Mount Vernon Group Architects, Inc.	-	-
201703140505	Watertown	Watertown High School	Eligibility Period	Core Program			-	-	-	-
201503140305	Watertown	Watertown Middle School	Building Complete	Accelerated Repair	Windows / Doors		exPERTcon, Inc.	Gale Associates, Inc.	Homer Contracting	Thompson & Lichtner Co., Inc.
201403150005	Wayland	Claypit Hill School	Closeout	Accelerated Repair	Windows / Doors		Pinck & Co., Inc.	CGKV Architects, Inc.	Lockheed Window Corporations	Russo Barr Associates, Inc.
201603150020	Wayland	Loker School	Design Development	Accelerated Repair	Windows / Doors		Colliers International	CBI Consulting LLC	-	Thompson & Lichtner Co., Inc.



200903160015	Webster	Park Avenue Elementary School	Closeout	Core Program	New Construction	DBB	Hill International Company	Dore & Whittier Management Partners, LLC	CTA Construction Co., Inc.	Cannon Design
201703170050	Wellesley	Upham Elementary School	Eligibility Period	Core Program			-	-	-	-
201403170305	Wellesley	Wellesley Middle	Closeout	Accelerated Repair	Windows / Doors		Arcadis U.S., Inc.	CSS Architects Incorporated	Paul J. Rogan Co., Inc.	Gale Associates, Inc.
201103220005G	West Boylston	Major Edwards Elementary	Closeout	Green Repair	Windows / Doors	DBB	URS Corporation	Reinhardt Associates, Inc.	-	Cannon Design
201503230005	West Bridgewater	Spring Street School	Final Audit Approved	Accelerated Repair	Roof		PCA 360	TSKP Studio, LLC	Capeway Roofing Systems, Inc.	Thompson & Lichtner Co., Inc.
201003230505	West Bridgewater	West Bridgewater Middle-Senior High School	Building Complete	Core Program	New Construction	DBB	Colliers International	Flansburgh Associates, Inc.	CTA Construction Co., Inc.	Cannon Design
201503320007	West Springfield	Phillip G. Coburn Elementary School	Feasibility Study	Core Program			NV5 (fka Joslin, Lesser + Associates Inc.)	TSKP Studio, LLC	-	-
200903320505	West Springfield	West Springfield High School	Final Audit Approved	Core Program	New Construction - Model School	DBB	Colliers International	Symmes Maini & McKee Associates, Inc.	Fontaine Brothers, Inc.	Turner Facilities Management Solutions
201603210010	Westborough	Fales Elementary School	Feasibility Study	Core Program			Vertex Construction Services	-	-	-
200903210305	Westborough	Gibbons Middle School	Building Complete	Core Program	Repair	CM@R	HEERY	Habeeb & Associates Architects, Inc.	Gilbane Building Company	BVH Integrated Services, P.C.
200903250020	Westfield	Abner Gibbs Elementary School	Closeout	Core Program	New Construction - Model School	DBB	Skanska USA Building, Inc	Jones Whitsett Architects, Inc.	Fontaine Brothers, Inc.	Horizon Engineering Associates, LLP
201703260004	Westford	Abbot Elementary	Design Development	Accelerated Repair	Roof		Leftfield, LLC	Raymond Design Associates, Inc.	-	CBI Consulting LLC
201303260025	Westford	Col. John Robinson Elementary School	Closeout	Accelerated Repair	Windows / Doors	DBB	Colliers International	Gale Associates, Inc.	GTC Construction Management	CBI Consulting LLC
201303260007	Westford	Norman E. Day Elementary School	Closeout	Accelerated Repair	Windows / Doors	DBB	Colliers International	Gale Associates, Inc.	J.J. Cardosi, Inc.	CBI Consulting LLC
201403310305	Westport	Westport Junior/Senior High School	Design Development	Core Program	New Construction	DBB	Daedalus Projects Inc	Jonathan Levi Architects LLC	-	BVH Integrated Services, P.C.
201703350015	Westwood	Hanlon Elementary School	Eligibility Period	Core Program			-	-	-	-
201503360020	Weymouth	Maria Weston Chapman Middle School	Feasibility Study	Core Program			Hill International Company	HMFH Architects, Inc.	-	-
201703360105	Weymouth	Thomas W. Hamilton Primary School	Approved Project Vote Pending	Accelerated Repair	Boiler		Atlantic Construction and Management, Inc.	BLW Engineers, Inc.	-	Fitzemeyer & Tocci Associates, Inc.
201703360110	Weymouth	Wessagusset Primary School	Approved Project Vote Pending	Accelerated Repair	Boiler		Atlantic Construction and Management, Inc.	BLW Engineers, Inc.	-	Fitzemeyer & Tocci Associates, Inc.
200903420505	Wilmington	Wilmington High School	Building Complete	Core Program	New Construction	CM@R	NV5 (fka Joslin, Lesser + Associates Inc.)	Dore & Whittier Management Partners, LLC	Gilbane Building Company	Symmes, Maini & McKee Associates
201003440505	Winchester	Winchester High School	Closeout	Core Program	Addition / Renovation	CM@R	Skanska USA Building, Inc	Symmes Maini & McKee Associates, Inc.	Consigli Construction Company, Inc.	RDK Engineers
200803460505	Winthrop	Winthrop High School	Closeout	Core Program	New Construction	CM@R	Skanska USA Building, Inc	HMFH Architects, Inc.	Gilbane Building Company	WSP USA
201203470060	Woburn	Wyman	Construction	Core Program	New Construction	DBB	Municipal Building Consultants, Inc.	DiNisco Design, Inc.	CTA Construction Co., Inc.	Fitzemeyer & Tocci Associates, Inc.
201603480020	Worcester	Belmont Street Community	Building Complete	Accelerated Repair	Windows / Doors		Watermark Environmental, Inc.	Tighe & Bond, Inc.	Stutman Contracting, Inc.	Russo Barr Associates, Inc.
201603480050	Worcester	Chandler Elementary Community	Building Complete	Accelerated Repair	Windows / Doors, Boiler		Watermark Environmental, Inc.	Tighe & Bond, Inc.	Stutman Contracting, Inc.	BVH Integrated Services, P.C. Russo Barr Associates, Inc.
201303480060	Worcester	Columbus Park	Closeout	Accelerated Repair	Windows / Doors, Boiler	DBB	Architectural Consulting Group, LLC	The S/L/A/M Collaborative	Contractor's Network, Inc.	RDK Engineers Russo Barr Associates, Inc.
201603480512	Worcester	Doherty Memorial High	OPM Selection	Core Program			-	-	-	-
201703480095	Worcester	Elm Park Community	Design Development	Accelerated Repair	Windows / Doors		NV5 (fka Joslin, Lesser + Associates Inc.)	HAKS Engineers, P.C.	-	Russo Barr Associates, Inc.



201503480090	Worcester	Flagg Street	Closeout	Accelerated Repair	Windows / Doors		Arcadis U.S., Inc.	CSS Architects Incorporated	J.J. Cardosi, Inc.	Russo Barr Associates, Inc.
201503480177	Worcester	Francis J McGrath Elementary	Closeout	Accelerated Repair	Windows / Doors		Arcadis U.S., Inc.	CSS Architects Incorporated	J.J. Cardosi, Inc.	Russo Barr Associates, Inc.
201603481004	Worcester	Gerald Creamer Center	Building Complete	Accelerated Repair	Windows / Doors, Boiler		Watermark Environmental, Inc.	Tighe & Bond, Inc.	Stutman Contracting, Inc.	BVH Integrated Services, P.C. Russo Barr Associates, Inc.
201503480115	Worcester	Grafton Street	Closeout	Accelerated Repair	Windows / Doors, Boiler		Arcadis U.S., Inc.	CSS Architects Incorporated	J.J. Cardosi, Inc.	Rist-Frost-Shumway Engineering, P.C. Russo Barr Associates, Inc.
201503480140	Worcester	Jacob Hiatt Magnet	Closeout	Accelerated Repair	Windows / Doors		Arcadis U.S., Inc.	CSS Architects Incorporated	J.J. Cardosi, Inc.	Russo Barr Associates, Inc.
201703480160	Worcester	Lincoln Street	Design Development	Accelerated Repair	Roof, Windows / Doors		NV5 (fka Joslin, Lesser + Associates Inc.)	HAKS Engineers, P.C.	-	Russo Barr Associates, Inc.
201203480200	Worcester	Nelson Place	Building Complete	Core Program	New Construction	CM@R	Tishman Construction Corporation of MA	Lamoureux Pagano & Associates, Inc.	Fontaine Brothers, Inc.	Bard, Rao + Athanas Consulting Engineers, LLC
201403480520	Worcester	South High Community	Design Development	Core Program	New Construction		HEERY	Lamoureux Pagano & Associates, Inc.	-	Horizon Engineering Associates, LLP
201303480230	Worcester	Tatnuck	Closeout	Accelerated Repair	Windows / Doors	DBB	Architectural Consulting Group, LLC	The S/L/A/M Collaborative	GVW, Inc.	Russo Barr Associates, Inc.
201703480235	Worcester	Thorndyke Road	Design Development	Accelerated Repair	Windows / Doors		NV5 (fka Joslin, Lesser + Associates Inc.)	HAKS Engineers, P.C.	-	Russo Barr Associates, Inc.
201603480026	Worcester	Wawecus Road School	Building Complete	Accelerated Repair	Windows / Doors		Watermark Environmental, Inc.	Tighe & Bond, Inc.	Stutman Contracting, Inc.	Russo Barr Associates, Inc.
201303480225	Worcester	Worcester Arts Magnet School	Closeout	Accelerated Repair	Windows / Doors	DBB	Architectural Consulting Group, LLC	The S/L/A/M Collaborative	GVW, Inc.	Russo Barr Associates, Inc.
201303480420	Worcester	Worcester East Middle	Closeout	Accelerated Repair	Boiler	DBB	Architectural Consulting Group, LLC	The S/L/A/M Collaborative	Contractor's Network, Inc.	RDK Engineers
201503500003	Wrentham	Delaney	Closeout	Accelerated Repair	Roof		P3 Inc.	Turowski2 Architecture, Inc.	MDM Engineering	Gale Associates, Inc.

APPENDIX B
2018, 2019, & 2020 ESTIMATED BID DATES

2018 ESTIMATED BID DATES

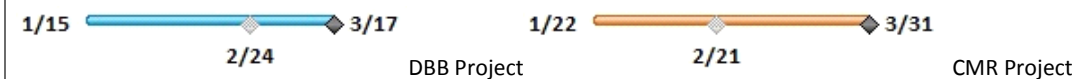
Note bid dates are Estimates ONLY. Please contact Districts for exact information.

Total Project Budget denotes total District costs and does not denote the basis of the MSBA Total Facilities Grant.

District	Enrollment	Project Budget	Start	Finish	Construct Budget	Notes	Nov '17	Dec '17	Jan '18	Feb '18	Mar '18	Apr '18	May '18	Jun '18	Jul '18	Aug '18	Sep '18	Oct '18	Nov '18	Dec '18	Jan '19					
Minuteman Reg. School District	628	\$ 144.9	Mon 11/20/17	Mon 6/18/18	\$ 119.2	GMP targeted: June 2018	Minuteman Regional Voc. Tech. HS.																			
							11/20															6/18				
																							12/22			
Newton	480	\$ 49.0	Wed 11/29/17	Thu 5/31/18	\$ 36.2	GMP targeted: May 2018	Newton - Cabot Elementary School																			
							11/29																5/31			
																							12/22			
Millis	515	\$ 52.8	Tue 1/9/18	Mon 4/2/18	\$ 42.6	GMP targeted: April 2018	Millis - Clyde Brown Elementary School																			
									1/9															4/2		
																								2/8		
Triton	415	\$ 39.0	Thu 2/1/18	Mon 4/9/18	\$ 30.2	GMP targeted: April 2018	Triton Pine Grove Elementary School																			
									2/1															4/9		
																								3/1		
Blue Hills Regional Voc Tech	900	\$ 84.9	Fri 3/30/18	Fri 9/14/18	\$ 70.5	GMP targeted: September 2018	Blue Hills RVTHS																			
																								3/30		
																								4/27		
Somerville	1590	\$ 256.0	Thu 4/19/18	Wed 6/27/18	\$ 199.0	GMP targeted: June 2018	Somerville High School																			
																								4/19		
																								5/30		
Braintree	1180	\$ 83.5	Tue 5/1/18	Thu 6/28/18	\$ 67.7	GMP targeted: June 2018	Braintree East Middle School																			
																								5/1		
																								5/30		
Saugus	1360	\$ 160.7	Wed 6/20/18	Thu 8/30/18	\$ 127.7	GMP targeted: June 2018	Saugus High School																			
																								6/20		
																								6/30		
Marlborough	610	\$ 56.4	Tue 7/10/18	Mon 9/17/18	\$ 47.8	NTP targeted: September 2018	Marlborough - Richer Elementary School																			
																								7/10		
																								8/27		
Lexington	645	\$ 65.3	Wed 9/12/18	Tue 11/20/18	\$ 53.0	GMP targeted: November 2018	Lexington - Maria Hastings Elementary School																			
																								9/12		
																								10/2		
Cape Cod Regional Tech	650	\$ 128.1	Mon 10/1/18	Fri 11/30/18	\$ 104.2	NTP targeted: November 2018	Cape Cod RTHS																			
																								10/1		
																								10/31		
Middleborough	720	\$ 103.5	Thu 10/11/18	Wed 11/21/18	\$ 82.8	NTP targeted: November 2018	Middleborough High School																			
																								10/11		
																								11/21		
Taunton	735	\$ 65.0	Thu 11/1/18	Wed 12/19/18	\$ 50.1	NTP targeted: December 2018	Taunton - Mulcahey Elementary School																			
																								11/1		
																								11/7		
																								12/19		
Total	10428	\$ 1,289.0			\$ 1,031.1																			12/5		

Note: Budget values are in millions.

The project start date represents the Filed-Sub bid solicitation date, gray diamond Filed-Sub bid date, and the black diamond GC Bids / GMP Execution.



2019 ESTIMATED BID DATES

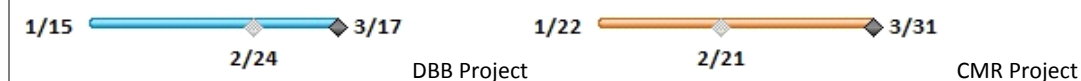
Note bid dates are Estimates ONLY. Please contact Districts for exact information.

Total Project Budget denotes total District costs and does not denote the basis of the MSBA Total Facilities Grant.

District	Enrollment	Project Budget	Start	Finish	Construct Budget	Notes	Sep '18	Oct '18	Nov '18	Dec '18	Jan '19	Feb '19	Mar '19	Apr '19	May '19	Jun '19	Jul '19	Aug '19	Sep '19	Oct '19	Nov '19	Dec '19	
							Westport	860	\$ 96.9	Wed 12/26/18	Tue 2/5/19	\$ 79.9	NTP targeted: February 2019				12/26	1/22	2/5				
Natick	1000	\$ 109.6	Thu 1/10/19	Fri 2/15/19	\$ 87.6	NTP targeted: February 2019					1/10	2/8	2/15										
Worcester	1420	\$ 210.0	Wed 1/16/19	Fri 3/29/19	\$ 172.9	GMP targeted: March 2019					1/16	3/6	3/29										
Harvard	445	\$ 53.6	Mon 4/8/19	Thu 6/6/19	\$ 43.0	GMP targeted: June 2019								4/8	5/1	6/6							
Fall River	2570	\$ 263.5	Wed 5/1/19	Tue 6/18/19	\$ 217.8	GMP targeted: June 2019								5/1	5/22	6/18							
Boston	500	\$ 124.8	Thu 5/2/19	Mon 7/1/19	\$ 96.0	GMP targeted: July 2019								5/2	5/30	7/1							
Ludlow	630	\$ 57.5	Thu 8/1/19	Thu 9/19/19	\$ 45.8	NTP targeted: September 2019												8/1	8/29	9/19			
Total	8035	\$ 972.1			\$ 790.7																		

Note: Budget values are in millions.

The project start date represents the Filed-Sub bid solicitation date, gray diamond Filed-Sub bid date, and the black diamond GC Bids / GMP Execution.



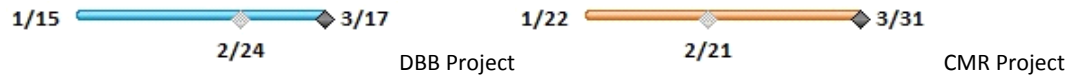
2020 ESTIMATED BID DATES

Note bid dates are Estimates ONLY. Please contact Districts for exact information.

Total Project Budget denotes total District costs and does not denote the basis of the MSBA Total Facilities Grant.

District	Enrollment	Project Budget	Start	Finish	Construct Budget	Notes	Sep '19	Oct '19	Nov '19	Dec '19	Jan '20	Feb '20	Mar '20	Apr '20	May '20	Jun '20	Jul '20	Aug '20	Sep '20	Oct '20	Nov '20	Dec '20		
							Attleboro	1725	\$ 259.9	Wed 10/9/19	Sun 3/1/20	\$ 223.1	GMP tareted: March 2020		10/9	11/1	Attleboro High School			3/1				
Total	1725	\$ 259.9			\$ 223.1																			

Note: Budget values are in millions.
 The project start date represents the Filed-Sub bid solicitation date, gray diamond Filed-Sub bid date, and the black diamond GC Bids / GMP Execution.



APPENDIX C
CONSTRUCTION STATUS REPORT

**Projects in Construction
MSBA Grant Basis and Maximum Grant Amount
Data Reported as of June 6, 2018**

Core Program and Waitlist Totals			\$2,071,724,474														*Includes Alternates	\$1,149,728,990
Project	Grade	Contractor	Total Construction Cost*	Projected Enrollment	PFA or Bid Data	Proposed Sq.Ft.	Construction Cost/Sq.Ft.	Building Cost	Building Cost/Sq.Ft.	Procurement Type	Construction Start Date	Substantial Completion	Schedule Variance (days)	Physical Progress	Change Orders	Change Orders %	Construction Status	Est Max Total Facilities Grant
CAPITAL PIPELINE PROJECTS IN CONSTRUCTION																		
Core Program Totals			\$2,062,759,474															\$1,139,597,184
Abington Frolio Jr Hs	Middle/High School	Brait Builders Corp.	\$78,791,215	1,115	Bid	235,370	\$335	\$61,468,040	\$261	Design/Bid/Build	03-Dec-15	18-Jul-17	0	99%	\$1,720,583	2.234%	Phase 3 site work has started back up, the site contractor remobilized to finish the remaining playfield. The playfield drainage work and rough grading is complete and topsoil installation is underway. All unsuitable and debris material has been removed from the site. Punchlist completion and additional scope work is being done during off-hours. The linoleum floor installation continues to be an issue and the project team continue to coordinate towards a solution.	\$48,528,486
Bourne Peebles Elementary School	Elementary School	Brait Builders Corp.	\$30,910,366	460	PFA	72,680	\$425	\$19,234,295	\$265	Design/Bid/Build	30-Nov-17	20-May-19	0	17%	\$22,114	0.072%	Steel erection continues following an error by the surveyor. Coordination between all trades are ongoing to minimize any issues caused by the surveying error. Summer construction activities include installation of temporary driveway and drop-off routes.	\$14,686,949
Carver Carver Elementary School	Elementary School	CTA Construction Co., Inc.	\$41,426,767	750	Bid	112,350	\$369	\$26,491,831	\$236	Design/Bid/Build	27-Sep-16	22-Jun-18	0	79%	\$423,467	1.074%	Drywall activities and Ceramic tiling are wrapping up inside the building. Resilient flooring continues throughout the building, Mechanical, Electrical, Plumbing installation continued. The startup of Roof Top Unit's has begun. Finish painting began in the fourth and fifth grade wing, CTA is working to finish preparing punch lists and will work on completing them along with continuing work on the exterior of the building. Gym floor installation is on-going and final cleaning will begin in the fourth and fifth grade wing and Kitchen.	\$25,248,962
Dedham Early Childhood Center	Elementary School	H.V. Collins Co., Inc.	\$23,213,553	200	PFA	50,998	\$455	\$13,010,627	\$255	Design/Bid/Build	16-Oct-17	21-Dec-18	0	34%	\$1,155,919	4.980%	Exterior Densglass is nearly complete. Mechanical, Electrical, and Plumbing have started in C-Wing along with framing for interior walls. Slabs were placed in C-wing as well and prepped for administration wing (B-Wing). Steel work is completed as well. Masonry on C wing is nearly complete. Roofing in C and B wing are ongoing. Started roofing in core wing (A-Wing). Proceeding with Air Vapor Barrier on the exterior envelope. Started installing windows. Making the building weather tight for electrical to start.	\$10,513,482
Granby West Street	Elementary School	Fontaine Brothers, Inc.	\$26,453,000	430	Bid	68,760	\$385	\$16,570,000	\$241	Design/Bid/Build	07-Feb-17	17-Aug-18	0	75%	\$141,651	0.536%	The contractor has completed interior demolition in the renovation space and is in the process of installing casework, rough electrical, plumbing and HVAC. New windows are being installed, along with the rough grading at the playground. The new water-well has been activated.	\$16,650,223
Hanover Sylvester	Elementary School	Brait Builders Corp.	\$23,075,675	560	PFA	97,099	\$238	\$17,678,117	\$182	Design/Bid/Build	24-Jul-17	14-Jun-19	14 ahead	56%	\$513,736	2.226%	Phase I is weather tight and finish work is underway.	\$15,861,754
Narragansett Templeton Center	Elementary School	Fontaine Brothers, Inc.	\$36,522,000	580	PFA	92,735	\$394	\$24,888,000	\$268	Design/Bid/Build	06-Dec-17	19-May-19	0	18%	\$21,443	0.059%	Foundations and footings are nearly complete. Structural steel has been erected at the southeast corner of the building and steel erection is continuing clockwise from there. Underground Mechanical, Electrical and Plumbing work is ongoing in the kitchen area; trenching and backfilling for utilities is ongoing.	\$22,256,637
Needham Hillside Elementary	Elementary School	Bacon Construction Co, Inc.	\$45,465,414	430	PFA	90,702	\$501	\$32,250,467	\$356	Design/Bid/Build	17-Oct-17	01-Jun-19	14 ahead	17%	(\$4,970)	-0.011%	Footings, foundations, damp-proofing and insulation around classroom building are complete and the majority of the structural steel has been erected. Underground plumbing is installed & inspected with the below grade insulation and vapor barrier started. Footings and foundations on administration, cafeteria and gymnasium building progressed with the completion of the retaining wall and backfilling started. The tie-in to the sewer was made. The Site contractor continued to remove and replace unsuitable soils with the last of the footings and areas around the building.	\$13,066,791
New Bedford John Hannigan	Elementary School	H.V. Collins Co., Inc.	\$29,792,732	400	Bid	74,056	\$402	\$20,536,621	\$277	Design/Bid/Build	11-Aug-16	25-Nov-17	0	99%	\$559,243	1.877%	Playground install is in progress and nearing completion. Punch-list is beyond 50% complete with approximately four weeks of work remaining. Targeting July 15, 2018 for Final Certificate of Occupancy. Air quality testing and balancing is ongoing. Remainder of site work (general landscaping) to be completed.	\$22,168,797
North Middlesex North Middlesex Reg	High School	CTA Construction Co., Inc.	\$64,995,000	870	Bid	180,530	\$360	\$49,909,000	\$276	Design/Bid/Build	25-May-15	23-Aug-17	30 behind	91%	\$1,574,131	2.422%	The project continues to struggle to complete the remaining outstanding work. Demolition and abatement of the existing building continues at a slower than expected pace. The project team is working to finish the commissioning of the building.	\$38,471,881
Plymouth Plymouth South High	High School	Bacon-Agostini Construction Joint Venture	\$90,266,700	1,005	Bid	248,081	\$364	\$66,744,766	\$269	Design/Bid/Build	06-Jul-15	12-May-17	14 behind	99%	\$4,229,750	4.981%	The Contractor is continuing to resolve building warranty items and the construction work per the Critical Path Method schedule. Parking lot (Phase 2) line painting will be completed this month. Site work (Phase 3) construction will be completed as scheduled in August 2018.	\$45,733,725
Revere Staff Sargent James J. Hill Elementary School	Elementary School	CTA Construction Co., Inc.	\$31,975,839	690	Bid	103,650	\$308	\$27,439,789	\$265	Design/Bid/Build	25-Mar-14	17-Aug-15	0	100%	\$110,455	0.345%	The Contractor/City is in the process of completing work to close out the project including commissioning and punch list items.	\$28,099,048
Scituate Gates Intermediate School	Middle School	Bacon-Agostini Construction Joint Venture	\$52,596,801	710	Bid	164,803	\$319	\$42,947,412	\$261	Design/Bid/Build	08-Dec-15	14-Aug-17	0	99%	\$2,310,348	4.393%	Current activities are the punch list, owner training and demonstration, facilitate building commissioning and other close out activities.	\$20,436,585
Wachusett Mountview Middle	Middle School	CTA Construction Co., Inc.	\$43,122,257	800	Bid	126,200	\$342	\$28,959,805	\$229	Design/Bid/Build	21-May-14	11-Apr-16	0	98%	\$993,666	2.304%	Incomplete commissioning items related to HVAC equipment performance remain for completion and moving this project into the closeout phase.	\$24,279,591
West Bridgewater West Bridgewater Jr-Sr	High School	CTA Construction Co., Inc.	\$46,267,914	625	Bid	141,250	\$328	\$35,071,188	\$248	Design/Bid/Build	01-Oct-13	31-Dec-15	0	100%	\$1,147,110	2.479%	Commissioning and punch list work in progress.	\$26,385,058
Woburn Wyman	Elementary School	CTA Construction Co., Inc.	\$27,017,841	410	Bid	70,701	\$382	\$18,251,786	\$258	Design/Bid/Build	10-Jan-17	30-Jun-18	0	90%	\$200,563	0.742%	All start-up activities for building equipment have been completed. Repairs to cafeteria floor underlayment and gym floor installation are in progress. Site work continues along with playground equipment installation to commence early July 2018.	\$13,974,154
Beverly Briscoe Middle	Middle School	Bacon-Agostini Construction Joint Venture	\$90,129,432	1,395	Bid	231,509	\$389	\$62,790,920	\$271	CM-at-Risk	24-Dec-15	01-Jun-18	0	93%	\$1,592,549	1.767%	Finish work and punchlist items are ongoing. Terrazzo installation is nearing completion. Electrical finish work including light fixtures, data wiring and technology installation is nearing completion. The gymnasium and the auditorium are nearing completion. The turf field is complete. Other site work including plantings and granite curb install are ongoing.	\$47,562,459
Billerica Billerica Memorial High School	High School	Shawmut Design and Construction	\$140,773,848	1,610	Bid	325,191	\$433	\$79,526,376	\$245	CM-at-Risk	13-Feb-17	04-Mar-19	0	40%	\$1,109,305	0.788%	Brick masonry work is nearing completion at the exterior of the last remaining Academic wing. Roofing, curtain wall, metal windows, glazing and exterior metal panel work is ongoing to achieve a weather-tight building.	\$71,262,413
Blue Hills Voc Blue Hills Reg Voc Tech	Vocational/Technical	Consigli Construction Company, Inc.	\$70,509,857	900	PFA	292,400	\$241	\$46,789,510	\$160	CM-at-Risk	28-May-18	02-Sep-19	0	0%		0.000%	Bids received on May 3, 2018. Construction Manager moving forward with Mechanical Shop Drawings to stay on schedule. The project received no Mechanical trade bids.	\$43,438,247
Boston Dearborn	Middle School	Gilbane Building Company	\$60,245,740	600	Bid	128,304	\$470	\$36,655,002	\$286	CM-at-Risk	08-Sep-15	02-Feb-18	109 behind	99%	\$1,083,064	1.798%	Building received a Certificate of Occupancy on April 12, 2018. Contractor is working on punch list and completing remaining site work and landscaping. Delivery and installation of furniture and equipment is ongoing.	\$36,033,391
Braintree East Middle School	Middle School	Shawmut Design and Construction	\$67,736,699	1,180	PFA	184,425	\$367	\$44,090,239	\$239	CM-at-Risk	01-May-18	12-Jul-19	0	0%		0.000%	Bids received May 30, 2018. Early enabling packages and demo work have commenced in early May 2018 and are ongoing. Phase 1 Construction to commence late June 2018 and work includes: concrete foundations, steel and exterior building envelope.	\$40,214,436
Brookline Edward Devotion	Elementary School	Shawmut Design and Construction	\$92,237,854	1,010	Bid	227,087	\$406	\$57,910,095	\$255	CM-at-Risk	11-Jul-16	31-Jul-18	0	76%	\$585,522	0.635%	Site utility installation and landscaping work is ongoing. Interior finish work is underway throughout the building.	\$25,197,463
Chelsea Clark Avenue School	Middle School	W. T. Rich Company Inc.	\$46,046,367	670	Bid	115,235	\$400	\$29,311,076	\$254	CM-at-Risk	23-Feb-15	31-Aug-18	0	84%	\$1,009,292	2.192%	Interior light gauge framing and gypsum wall board installation is nearly complete. Painting of gypsum wall board continues throughout. Install of ceiling and flooring finishes are on-going. Windows nearly complete. Curtain wall installation is on-going, glazing to follow. Millwork and casework install continues in Tower and Lower Level. Mechanical, Electrical, Plumbing and Fire Protection finishes continue in lower level. Site work is on-going.	\$36,163,680
Haverhill Caleb Dustin Hunking	Middle School	Shawmut Design and Construction	\$49,544,769	1,005	Bid	147,996	\$335	\$35,181,852	\$238	CM-at-Risk	20-Apr-15	16-Dec-16	0	98%	\$2,070,911	4.180%	School is in full operation and remaining work, replacement of sidewalk is being planned for Summer 2018.	\$39,518,874
Holbrook Holbrook Jr Sr High	High School	Consigli Construction Company, Inc.	\$78,135,643	1,095	Bid	217,353	\$359	\$52,399,810	\$241	CM-at-Risk	24-Jun-15	15-Jun-17	0	95%	\$80,572,323	103.743%	Final site work which includes parking lots, driveways, courtyard, football field and track in progress. Project team is working to complete the punch list work remaining in the interior of the building.	\$53,832,918
Hopkinton Center	Elementary School	Colantonio, Inc.	\$35,140,982	395	Bid	88,756	\$396	\$21,864,684	\$246	CM-at-Risk	03-Oct-16	31-Jul-18	0	91%	\$1,682,879	4.789%	Flooring is in progress, touch-up painting, playground equipment and site work are in progress. Mechanical equipment testing and training is in progress.	\$13,377,226

**Projects in Construction
MSBA Grant Basis and Maximum Grant Amount
Data Reported as of June 6, 2018**

Core Program and Waitlist Totals			\$2,071,724,474														*Includes Alternates	\$1,149,728,990
Project	Grade	Contractor	Total Construction Cost*	Projected Enrollment	PFA or Bid Data	Proposed Sq.Ft.	Construction Cost/Sq.Ft.	Building Cost	Building Cost/Sq.Ft.	Procurement Type	Construction Start Date	Substantial Completion	Schedule Variance (days)	Physical Progress	Change Orders	Change Orders %	Construction Status	Est Max Total Facilities Grant
CAPITAL PIPELINE PROJECTS IN CONSTRUCTION																		
Core Program Totals			\$2,062,759,474															\$1,139,597,184
Millis Clyde F Brown	Elementary School	Bacon-Agostini Construction Joint Venture	\$42,591,393	515	PFA	89,852	\$474	\$26,297,583	\$293	CM-at-Risk	15-Feb-18	25-May-19	0	14%	\$0	0.000%	Structural Steel mobilization and erection has begun. Under slab utilities are in progress and are scheduled to be completed Summer 2018.	\$20,950,710
Minuteman Voc Tech Minuteman Regional High	High School	Gilbane Building Company	\$119,200,892	628	PFA	258,332	\$461	\$71,673,473	\$277	CM-at-Risk	06-Jun-17	25-Sep-19	0	21%	\$0	0.000%	Structural steel erection is complete with detailing ongoing. Roofing and masonry are underway. Installation of underground utilities and backfilling of foundations continues. Pouring of slab on deck is ongoing.	\$44,139,213
Mount Greylock Mt Greylock Reg High	High School	Turner Construction Company	\$52,310,706	535	Bid	133,070	\$393	\$30,982,991	\$233	CM-at-Risk	30-Mar-17	20-Apr-18	0	70%	\$1,512,890	2.892%	Foundations for site walls and hardscape features are nearly complete. Grading continues in preparation for sidewalks, and granite curb has been installed along the bus drive. Mechanical, Electrical and Plumbing rough-in at the Auditorium is on-going. Installation of light fixtures and Mechanical, Electrical and Plumbing trim continues in classroom wing. Storefront installation is on-going. Metal panel installation also continues at main entry and cafeteria. Painting is nearly complete throughout. Bathroom wall and floor tile is nearly complete at 1st floor. Linoleum floor at 1st floor and upper level corridors is on-going as well as casework and marker boards.	\$31,607,189
Newton Cabot	Elementary School	W. T. Rich Company Inc.	\$36,695,776	480	PFA	84,262	\$435	\$24,396,982	\$290	CM-at-Risk	11-Jul-17	24-Jun-19	0	16%	\$0	0.000%	Steel detailing nearing completion. Under slab utility work in existing building, classrooms and library is ongoing. Slabs are being placed in additions. Roof work at existing building is ongoing.	\$13,636,546
Pittsfield Taconic High	High School	Gilbane Building Company	\$97,757,373	920	Bid	246,520	\$397	\$56,984,184	\$231	CM-at-Risk	21-Mar-16	29-Jun-18	0	80%	\$2,046,251	2.093%	Finish construction continues throughout, with some of the classrooms and administration offices nearing completion. Painting, floor finishes including terrazzo completion, and ceiling installations remain in some of the classrooms and common areas. Several of the shop areas have progressed to near completion, ready for furniture deliveries. Electrical finishes including life safety systems are a priority for the pending substantial completion target date.	\$71,935,008
Quincy Reay E Sterling Middle	Middle School	Bond Brothers, Inc.	\$46,550,994	430	Bid	95,732	\$486	\$29,569,323	\$309	CM-at-Risk	20-Jun-17	05-Sep-19	0	41%	\$173,362	0.372%	Work is progressing well, contractor was falling behind original schedule and developed a new "recovery schedule" that has the project back on time. The major changes were the re-ordering of the sequence of work for framing, focusing on making the administrative side weather tight first, rather than the whole building. Mock-up testing is being performed. Framing, roofing, masonry, and utility work are all on-going.	\$28,022,957
Stoughton Stoughton High	High School	Consigli Construction Company, Inc.	\$100,961,191	1,065	PFA	214,860	\$470	\$58,510,773	\$272	CM-at-Risk	12-Jun-17	22-Aug-19	0	21%	\$464,483	0.478%	Steel erection completed with slab on grade including moisture mitigation has started. Fire proofing has commenced and installation of CMU is ongoing.	\$51,078,994
Triton Pine Grove	Elementary School	W. T. Rich Company Inc.	\$30,191,749	415	PFA	87,674	\$344	\$17,111,184	\$195	CM-at-Risk	09-Apr-18	30-Aug-19	0	1%	\$0	0.000%	Abatement and demolition in the gymnasium and cafeteria (phase 1A, west side of building) began April 14th. Work will be contained to phase 1A until classes are dismissed in late June. Temporary fencing and erosion controls have been installed. An electrical duct bank has been run from the transformer pad to the street.	\$16,264,155
Wilmington Wilmington High	High School	Gilbane Building Company	\$67,558,835	960	Bid	192,443	\$351	\$48,060,314	\$250	CM-at-Risk	30-Apr-13	12-Feb-15	0	99%	\$2,881,004	4.458%	Resolution of the auditorium and gym floor issues are ongoing.	\$35,674,893
Worcester Nelson Place	Elementary School	Fontaine Brothers, Inc.	\$46,546,300	600	Bid	111,256	\$418	\$29,503,564	\$265	CM-at-Risk	01-Jul-15	31-May-17	0	99%	(\$156,605)	-0.336%	Punch list is ongoing. There is still some base contract scope of work being completed. 10 month Commissioning was done in late May and the Final report is being drafted.	\$33,324,289
Waitlist Totals			\$8,965,000				\$139		\$108									\$10,131,806
New Bedford Taylor School at the Sea Lab Marine Science Education Center	N/A	M. O'Connor Contracting, Inc.	\$8,965,000	284	Bid	64,533	\$139	\$6,967,355	\$108	Design/Bid/Build	28-Nov-15	01-Nov-16	0	100%	\$457,938	5.108%	Close out is pending final change order execution.	\$10,131,806