



Massachusetts School  
Building Authority



FONTAINE BROS., INC.

LPA|Architects

# MSBA DESIGNER ROUNDTABLE

## Community-Driven Design: Engagement Beyond Visioning

June 2, 2022

# 1 Major Howard W. Beal School



**Kathryn Crockett**  
LPA|A



**Sean Brennan**  
LPA|A



**Chris Girardi**  


# 2 South High Community School



**Navneet Magon Anand**  
DV



**Kathryn Crockett**  
LPA|A

# 3 Doherty Memorial High School



**Elizabeth Wambui**  
FONTAINE BROS., INC.



**Kathryn Crockett**  
LPA|A



**Christina Bazelmans**  
LPA|A



**John Ferrante**  
AGCMA  
Building Excellence



Massachusetts School  
Building Authority



Reach  
to all learners  
and all parts of  
the school

LPA|Architects

# MSBA DESIGNER ROUNDTABLE Major Howard W. Beal School





**PRESENTERS**



**Kathryn Crockett**

Principal Architect



**Sean Brennan**

Project Architect



**Chris Girardi**





BEAL ELEMENTARY SCHOOL





BEAL ELEMENTARY SCHOOL





BEAL ELEMENTARY SCHOOL





BEAL ELEMENTARY SCHOOL





BEAL ELEMENTARY SCHOOL





BEAL ELEMENTARY SCHOOL







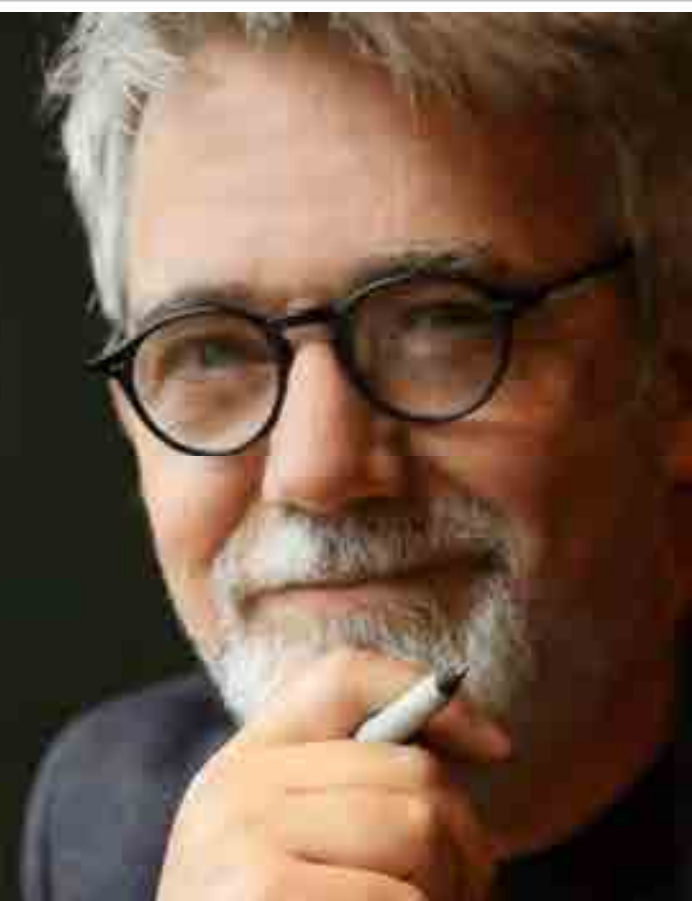


BEAL ELEMENTARY SCHOOL



Dream Boldly.  
Create Bravely.  
Be You.

PETER H. REYNOLDS



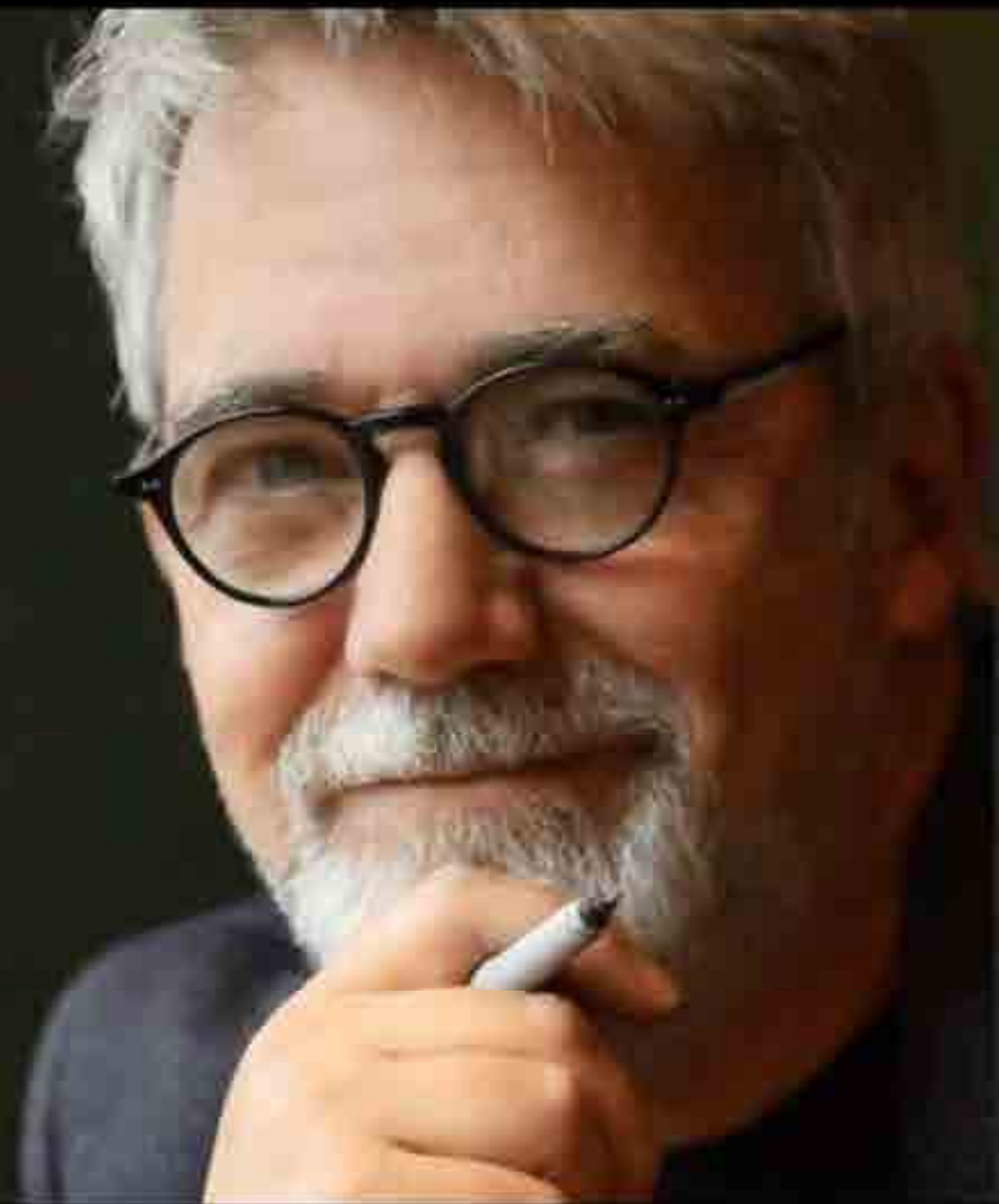
# BEAL ELEMENTARY SCHOOL





Dream Boldly.  
Create Bravely.  
Be You.

PETER H. REYNOLDS



BEAL ELEMENTARY SCHOOL





BEAL ELEMENTARY SCHOOL





BEAL ELEMENTARY SCHOOL





BEAL ELEMENTARY SCHOOL





BEAL ELEMENTARY SCHOOL



BEAL ELEMENTARY SCHOOL



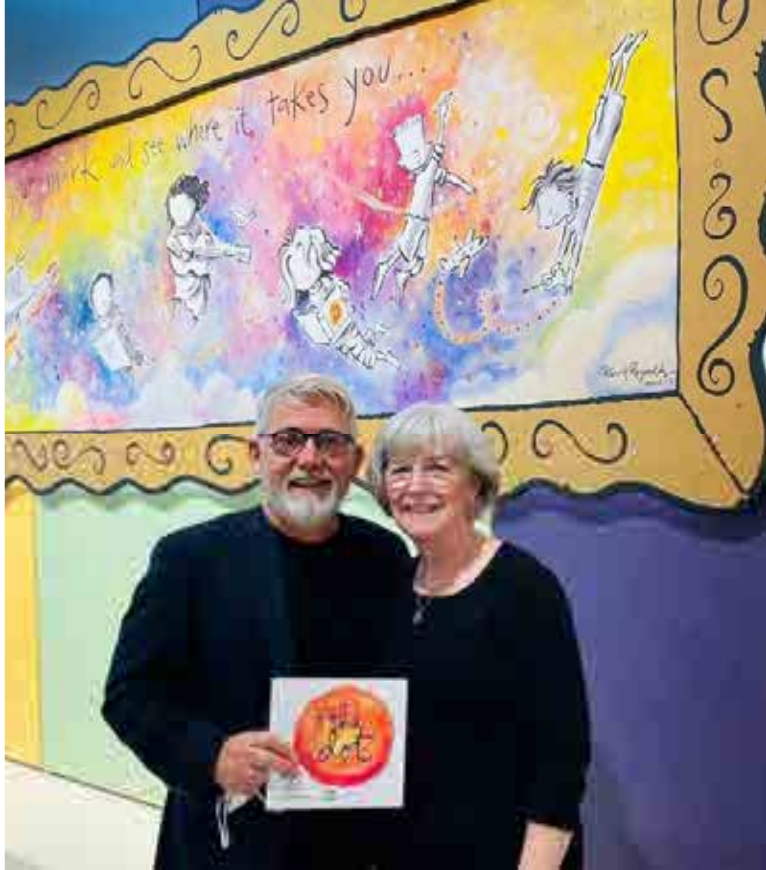


# BEAL ELEMENTARY SCHOOL





BEAL ELEMENTARY SCHOOL





Making our mark at Beal...



...to see where it takes us!







BEAL ELEMENTARY SCHOOL







Massachusetts School  
Building Authority

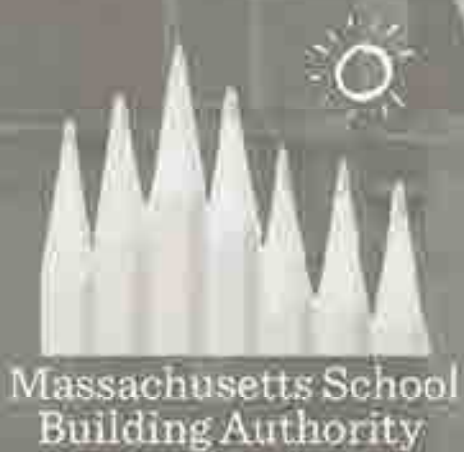


Reach  
to all learners  
and all parts of  
the school

LPA|Architects

# MSBA DESIGNER ROUNDTABLE **Major Howard W. Beal School**





EVERYONE

IS

WELCOME  
HERE

MSBA DESIGNER ROUNDTABLE  
**South High Community School**





# PROJECT STATISTICS

- **NEW CONSTRUCTION** ADJACENT TO THE EXISTING SCHOOL
- ENROLLMENT: **1420 STUDENTS**
- EXPANDED PROGRAM AND **COMMUNITY USE**
- AREA: +/- **360,000 SF**
- OCCUPANCY **FALL 2022**





TOP. BULLYING  
only when you...

SOUTH HIGH  
Grades 9 & 11 - Sat - Nov 1 - 2PM  
Grades 10 & 12 - Sun - Nov 2 - 1PM  
*Any dream will do!*  
HATCHER THEATRE  
ANGIE SCHWAB DIRECTOR

MEMPHIS  
Nov 1-3, 2013  
HATCHER THEATRE

THE NEW SOUTH HIGH  
LOBBY DESIGN CLUB  
THE NEW SOUTH HIGH  
NEEDS YOUR CREATIVITY  
Sign Up Today

NO FOOD  
OR BEVERAGE  
IN AUDITORIUM



SOUTH HIGH



BULLYING  
takes one...

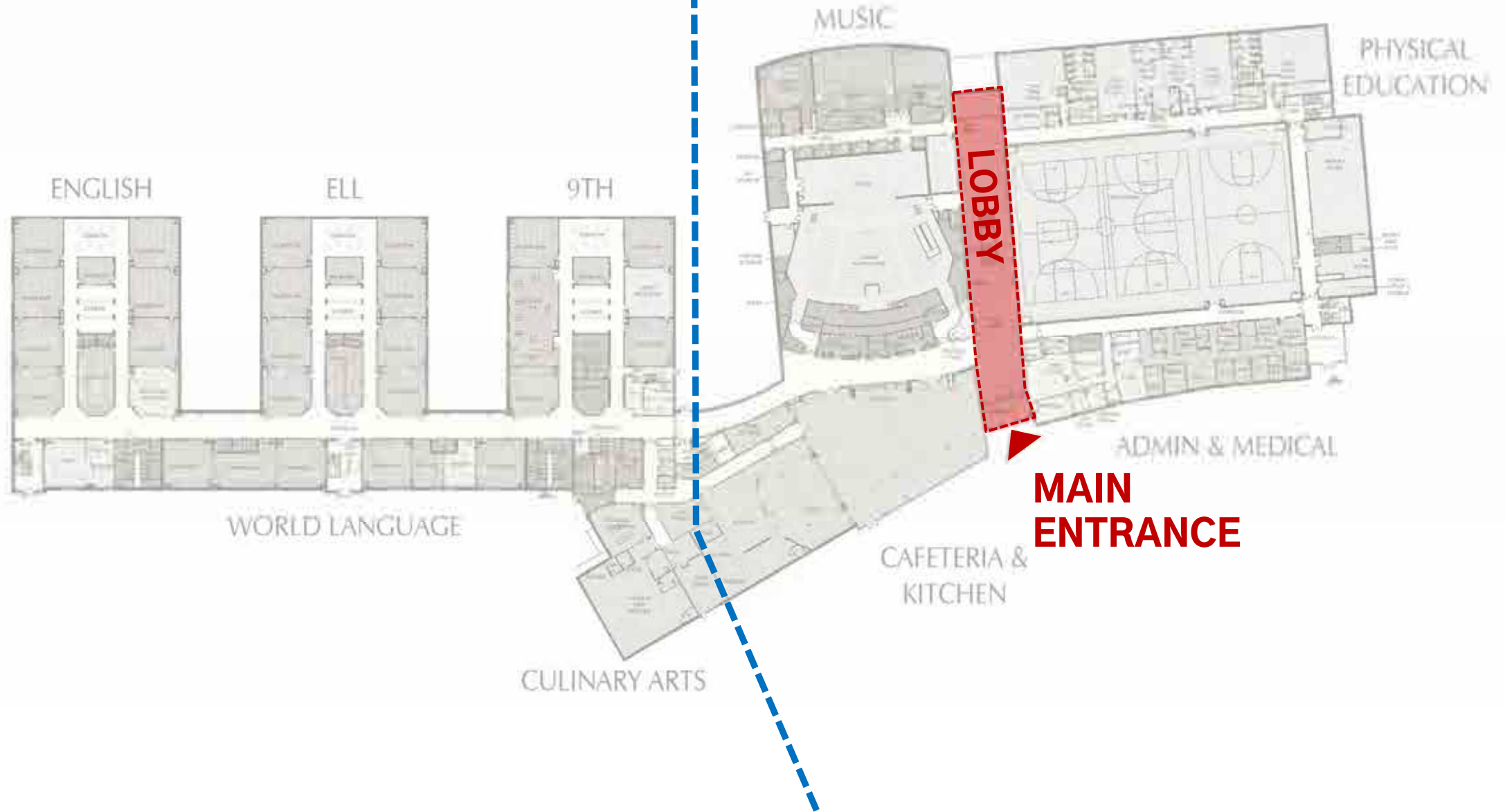
SOUTH HIGH

WINNER 2010 TONY  
BEST MIDDLE

FIRST FLOOR PLAN



◀ ACADEMIC | COMMUNITY ▶





SOUTH HIGH



PRESENTERS



**Kathryn Crockett**

Principal Architect



**Navneet Magon Anand**

Principal



EVERYONE

IS

WELCOME  
HERE



South High  
**COMMUNITY**  
School





SOUTH HIGH



THE NEW SOUTH HIGH SCHOOL

# DESIGN OPPORTUNITY FOR STUDENTS!

➔ **THE NEW SCHOOL LOBBY DESIGN CLUB**  
THIS IS AN EXCITING OPPORTUNITY FOR STUDENTS TO CONTRIBUTE TO THE NEW SCHOOL LOBBY DESIGN.

**South High is a unique school with great history & culture!**  
Help celebrate South High with your creative ideas for the new school.

The Architects - Lamoureux Pigeon Architects - of the new school are providing an exciting opportunity for the students of South High to contribute to the design of the new school lobby with creative ideas, contributions of stories of culture and heritage and to celebrate South High's sense of COMMUNITY.

**The Design Club will be given challenges:**

- ➔ The History Wall
- The Digital Wall
- The Word Wall
- Student Art Wall
- The Entrance Lobby

Students pick what they want to work on. At the end of the year, they will present their projects to the Architect's Design Team. Your best ideas will be incorporated into the new school lobby design. A great way for the students to leave their mark on the South High Community!

The South High Design Club will be working with Creative Impacts - a 21st Century Creative Empowerment Program - to work on these challenges with 21st ideas. A great experience with presentations, workshops, invited guests and more to help the creative process in the South High Design Club.

Available for community service points... **sign up!**



# 3

PHASES

1. EXPLORATION
2. ENGAGE COMMUNITY
3. DESIGN



PHASE 1: EXPLORATION



An essential aspect of research is not being afraid to fail.  
- Dr. Edwin Lewis

Every child is an artist. The problem is how to raise an artist who grows up.  
- Pablo Picasso



PHASE 2: ENGAGE COMMUNITY





# PHASE 3: DESIGN



# 5

## CHALLENGES

---

1. HISTORY WALL
2. WORD WALL
3. DIGITAL WALL
4. MURAL WALL
5. ENTRANCE LOBBY





LOBBY



Adam DeFosse  
A. The culture show taught me that there is a ton of diversity within certain culture groups.  
B. The different culture groups unique this school trans person

Tina Le Belringer  
That we are all welcomed, no matter what we are, where we come from, we are to be accepted and embraced with our cultures

South High is clearly extreme Middle Eastern people, Asians, African diversity is a community to have everyone others share their culture. The recent intern cultures, ethnicities, and races of the school, & the world. These cultural values can range from and interpersonal relationships. It's great to be exposed to the various cultures, because it

community is like a coverless book, you can't judge it accurately without reading it first. In a less poetic sense, you can't judge a community without experiencing all of the ups and downs it provides. The experiences you find can make or break your ideas of a community just like a book.

High Lobby design is many cultures of diversity which presents it

Sit up  
Act nice  
Do you want?

When you walk through the front doors represented at our school, things people from student who were born here in the way to my peers who are in America for the first time the door of someone in a unfamiliar land and without knowing the English language. At South High I am an ambassador to well wanted to come here. At South High I am a transferor from English. At South High I am a piece of the puzzle representing students.

South high community school is exactly what on a base of diversity. You can walk down a street infested with war, people from places other no matter where one was born every person, one from the state a student at South High, the South High is an example of regional attractiveness and ideas and fresh

wanting to learn because we are great and about different cultures. All in all I think South High is very diverse and it should be a mural on diversity and culture.

- life  
Hispanic  
Latino  
Do you know what we know  
Your tia  
La Chappi  
She got herself a new pappi  
Tu prima Cecilia  
Inteligente y linda  
Your abuela says hi  
Kiss your



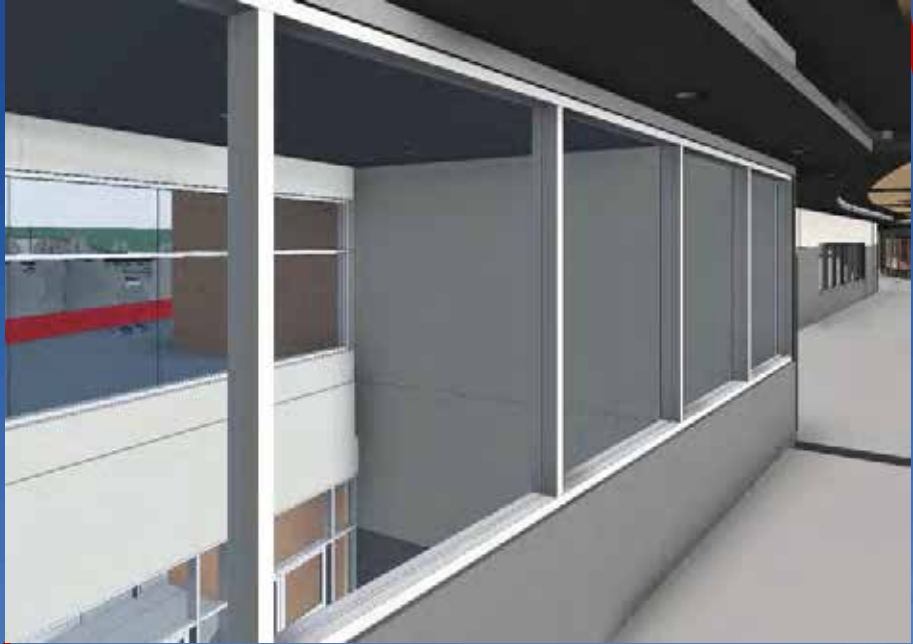


# 1. WORD WALL





## 2. ENTRANCE LOBBY



# 2. ENTRANCE LOBBY





### 3. DIGITAL WALL





### South High Alumni Interviews

#### General questions:

- 1) What experiences at South did you learn from, good or bad?
- 2) What made you accept this interview today?

#### Individualized questions:

- 1) How is (insert career) accessible for students today?
- 2) What can students do in high school do to be successful in today's world?
- 3) What advice would you give students about what they can do, or who they are to be successful?

### Social Communication

To empower and mobilize students with this digital wall by maximizing it as a platform: to actively make activities accessible and approachable for students of all backgrounds and academic performance.





# 4. MURAL WALL

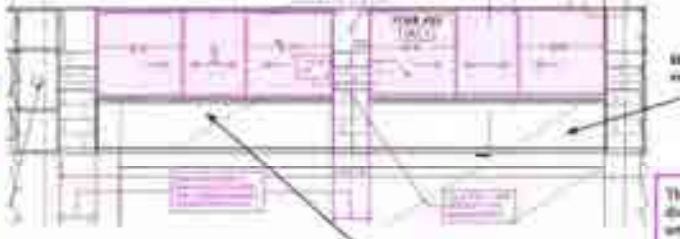
## MURAL WALL

The Student & Teacher

### INTENTION

We want to show students that being aware of yourself and trying to better yourself is an incredibly important step and part of life. We want students to know that *no matter the circumstance* you will always be a part of this community and we want to make sure students are really able to see themselves as a part of the community.

## MURAL WALL



Display Cases with rotating art


The display cases will also display work of other artists in the community

We propose that the Mural wall should be on the **left** of the columns and the display cases with rotating art on the **right** side.


### PATCHES: PATTERNS

**Recurrent**

1. Sports and clubs in the school
2. Different parts of the city and community
3. Celebrate and showcase different cultures



### SKETCH & ELEMENTS OF THE WALL



**Patterns**

1. Inscribe abstract patterns
2. Incorporate geometric shapes

**Text**

1. Showcase a story reflective of the community
2. Capture faces, and personal journey

**Visuals**

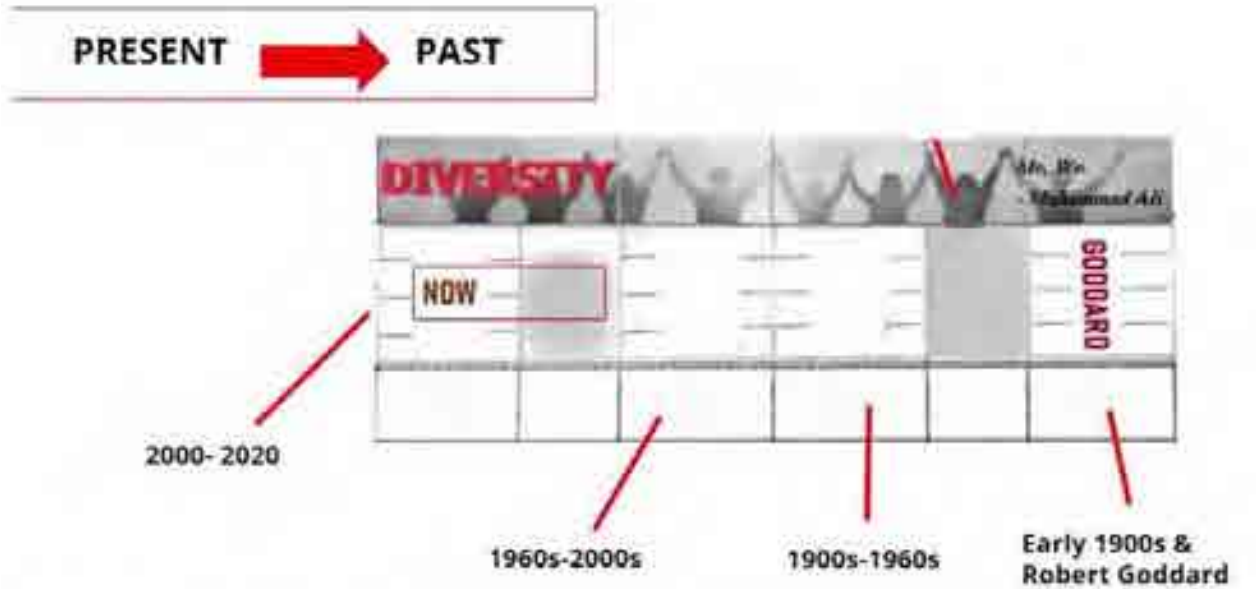
1. Fill the community and individually spaces
2. Show a sense of working together



#### 4. MURAL WALL







**Goddard Scholars Academy Andy's Attic**

**Formation of GSA:**

We began a journey with Mr. Morabito, the academic principal of the G.S.A. academy. This journey highlights an exceptional example of collaboration for selected students.



**Start the Andy's Attic Mission:**

We are a 501(c)(3) nonprofit organization that is fully run by students at South High Elementary School. Andy's Attic was started in 2010 in memory of Andy Tower.



**Robert Goddard- Information**

Robert Goddard graduated South high in 1904 as valedictorian, and later invented the first rocket. He attended WPI and Clark University.

- Extensive biography
- Copy of Rocket Sketch from Worcester Historical Museum to display



**International Week: 1985- Now**

To this day we still are celebrating the various cultures in our school through International Week.

We highlight the specialized celebrations of the history week by the next one.



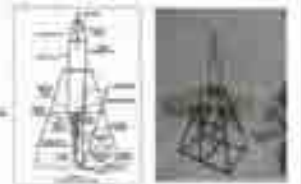
**International Week: Examples (1988)**



International Week: Poster (1992)

**Robert Goddard Rocket**

- Mission Model Rocket
- Launch, Assembly and Refill
- Work with the Mission
- Historical background etc.



# 5. HISTORY WALL



**ALUMNI**

**ARTIFACTS**

**1901  
BUILDING**

**1978  
BUILDING**

**ARTIFACTS**

**2021  
BUILDING**





## South High students help design new school lobby

\$210M building scheduled to open in the fall of 2021

By Scott O'Connell  
Times Union Staff Writer

WORCESTER - As the district prepares to welcome a brand-new South High Community School in two years, it is letting students design a significant portion of it.

As part of a pilot initiative, South High and the architect designing the new school, Jamovicka Pagano Associates Inc., have formed an advisory committee that is drawing up the building's main lobby. After putting together rough drafts of their ideas so far this school year, the students will continue to flesh out and eventually

execute their designs over the next two years, in time for the school's slated opening in the fall of 2021.

"South High has a really strong sense of community," said Newark Mayor Anand, founder of Design Vistas, who is assisting with the project. "The architects thought it would be a good idea to get the students involved."

In total, the students will be responsible for designing the sections of the new school's sprawling lobby: the visual school entrance display, the history wall, the digital wall, the word wall and the informational wall. Six students are doing most of the work on these designs, meeting roughly twice a week after school on the

project.

Last week, those students presented their work so far to representatives from Jamovicka Pagano, which will help lead talks on their project. The students mostly have been able to envision, however, a responsibility they're taking seriously as they step the look of a building that will be around for decades.

"It's pretty passionate about it - the passion continues," said spokeswoman Julie De, who is working on the history wall and lobby mural wall.

"Using this to help and inspire students is a big part of what I want to do with this project," she follows after another

See SOUTH EDGE, B2







SOUTH HIGH



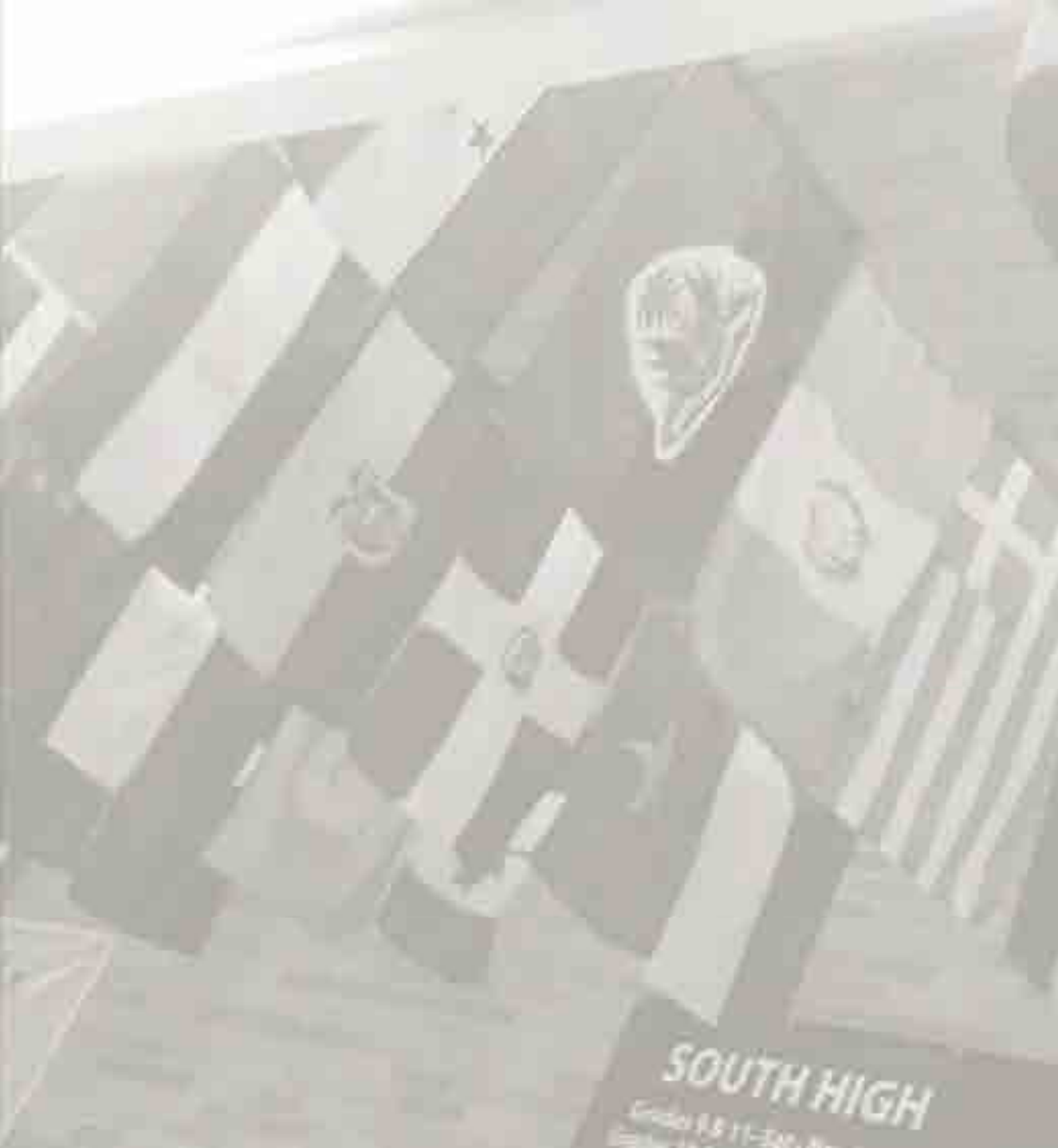


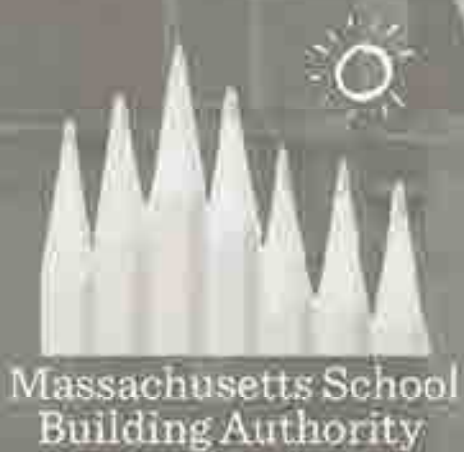


CONFIDENT - DILIGENT  
ACCEPTANCE - WORKERS - DARE  
EMPATHY - EXCELLENCE  
AMBITION - REPUTATION - ADMIRABLE  
**EVERYONE**  
INSPIRE - BELONG  
TRADITION - ACTION - TRIUMPH - LEADERSHIP  
COLLECTIVE - PASSION - PERSPECTIVE  
ENCOURAGE - CHANGE - ENVISION - TEAMS  
TALENT - WELL-BEING - JOY - GROWTH  
FREEDOM - HERITAGE - TRANSFORM - GROWTH  
SERVICE - OPTIMISM - PROSPERITY - INFLUENCE  
RESILIENCE - CULTURAL - INNOVATE - ENGAGED  
LOYALTY - GREATNESS - NURTURE - BOND  
SUPPORT - COMMUNITY - DETERMINED  
RESPECT - GRATITUDE - INFLUENCE



SOUTH HIGH





EVERYONE

IS

WELCOME  
HERE

MSBA DESIGNER ROUNDTABLE  
**South High Community School**





# MSBA DESIGNER ROUNDTABLE

## Doherty Memorial High School

# 3



**AGCMA**  
Building Excellence

**FONTAINE  
+ DIMEO**

 LPA Architects



**PRESENTERS**



**Kathryn Crockett**

Principal Architect



**Christina S. Bazelmans**

Project Manager &  
Sustainability Lead



**Elizabeth Wambui**

Director of Diversity,  
Inclusion and  
Community Impact



**FONTAINE BROS., INC.**



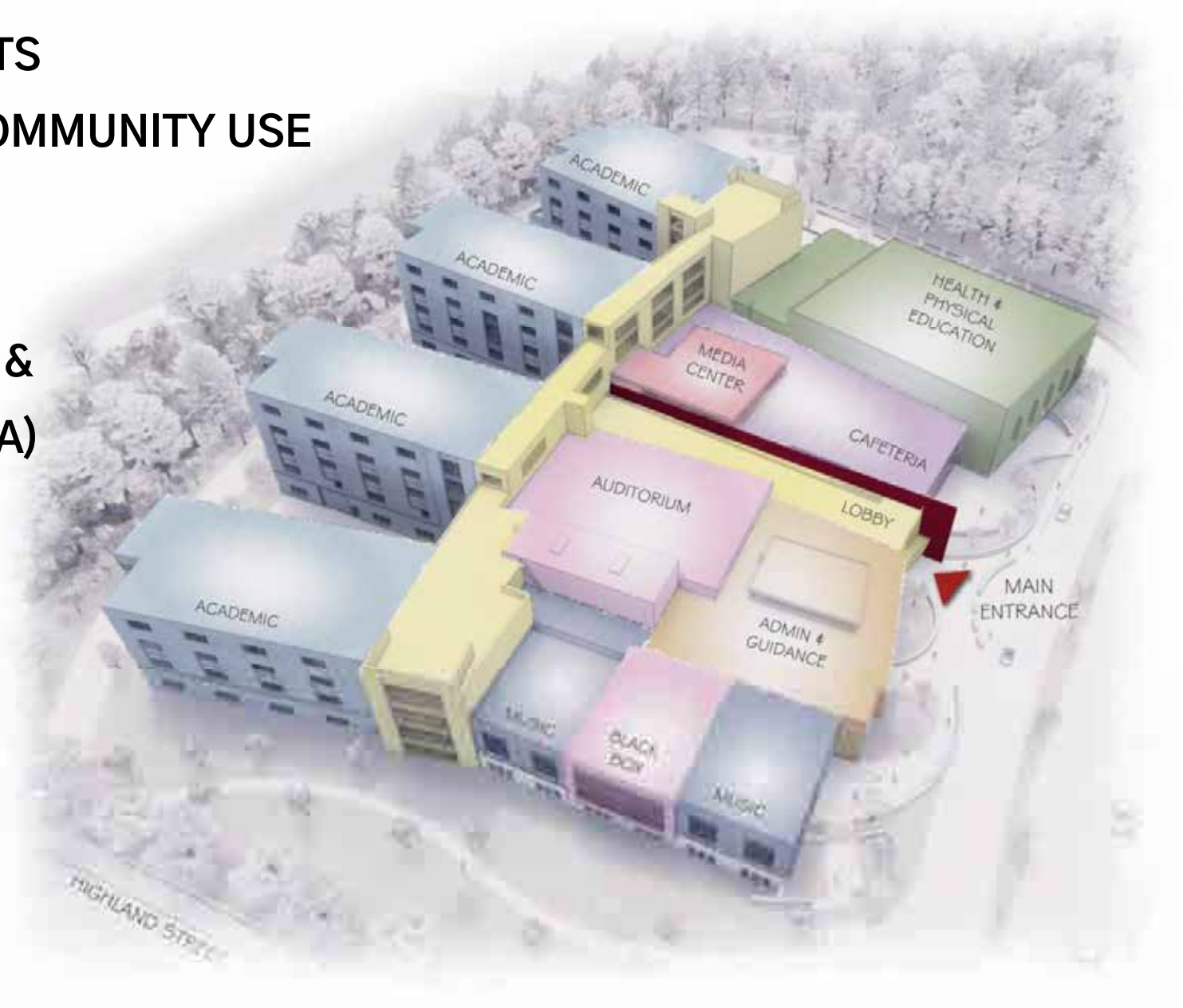
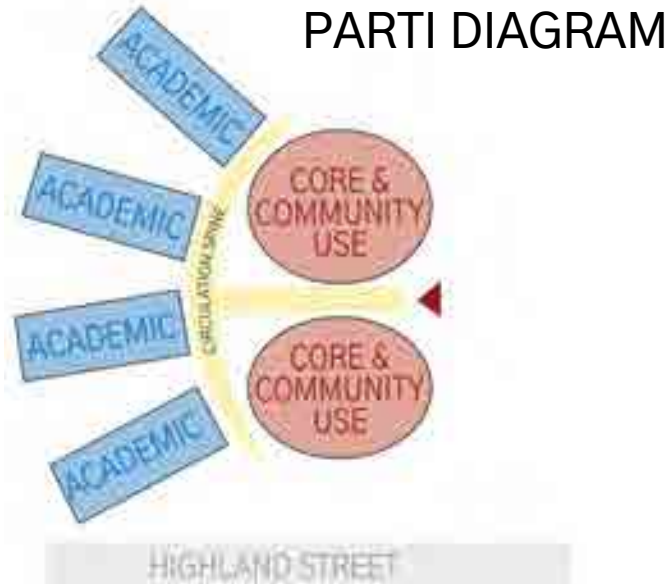
**John Ferrante**

Chief Executive Officer



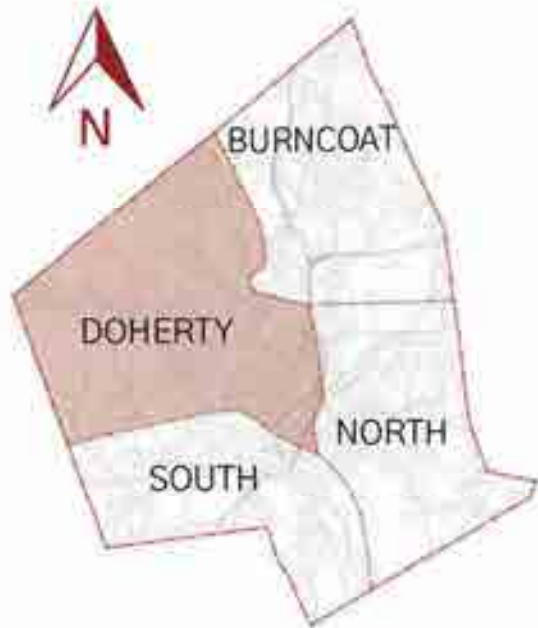


- **NEW CONSTRUCTION** ADJACENT TO THE EXISTING SCHOOL
- ENROLLMENT: **1670 STUDENTS**
- EXPANDED PROGRAM AND **COMMUNITY USE**
- AREA: +/- **422,000 SF**
- OCCUPANCY **FALL 2024**
- ENHANCE THE **ENGINEERING & TECHNOLOGY ACADEMY (ETA)**



LEGEND

- ★ Doherty Memorial High School
- Elementary School
- ◆ Forest Grove Middle School
- College/University
- ◆ Worcester Point of Interest
- Park Land
- 2 Mile Walking Distance



CITY OF WORCESTER  
QUADRANT MAP







COMMUNITY



EXISTING SITE



FOLEY STADIUM

PLEASANT STREET

NEWTON HILL  
AT ELM PARK

PARK AVENUE

ELM  
PARK

HIGHLAND STREET





PROPOSED SITE



PROPOSED SITE PLAN











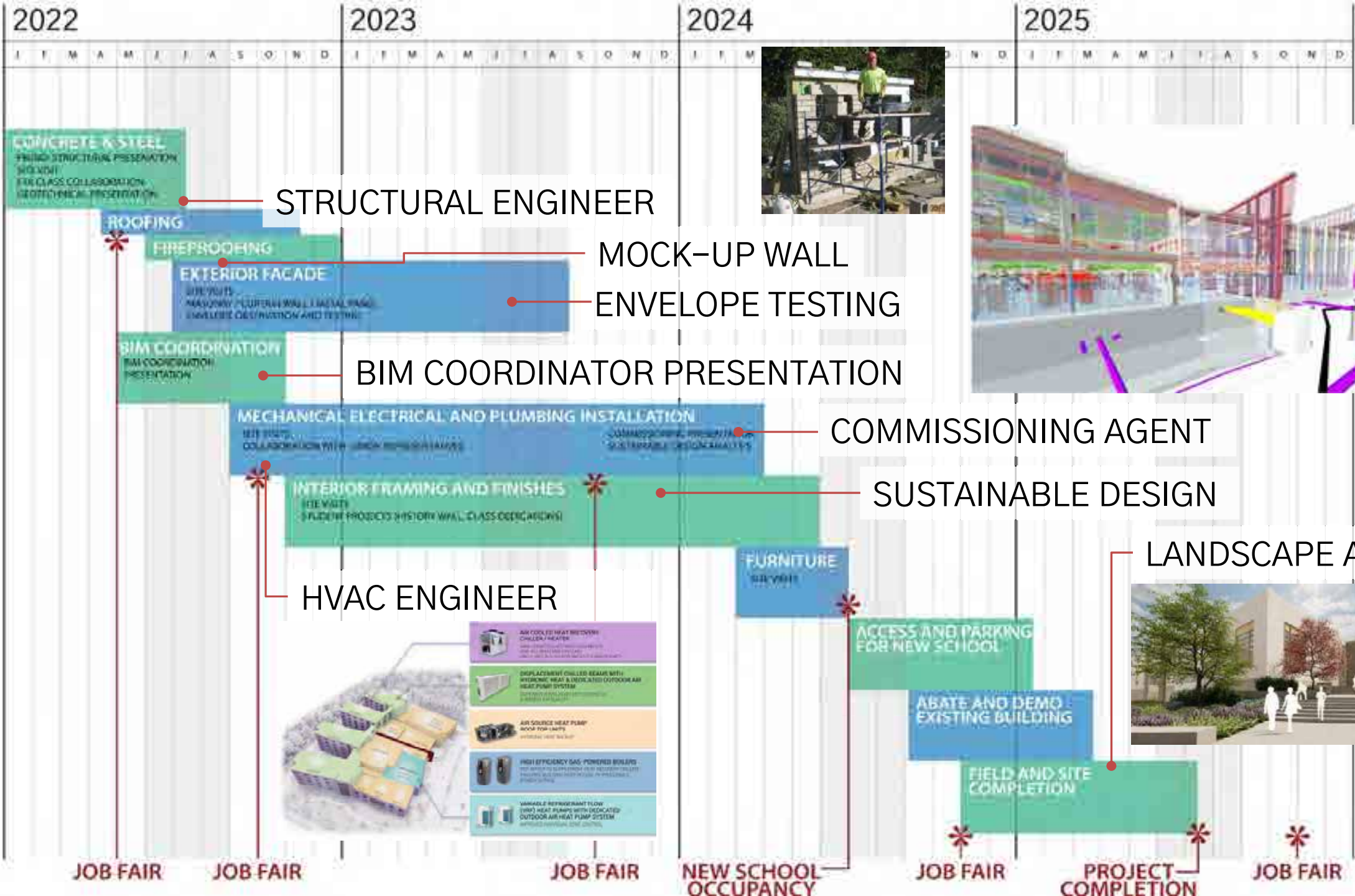


ETA





SCHEDULE



CONCRETE & STEEL  
 FINISH STRUCTURAL PRESENTATION  
 SOIL/ROOF/FOUNDATION COLLABORATION  
 GEOTECHNICAL PRESENTATION

STRUCTURAL ENGINEER



ROOFING

FIREPROOFING

EXTERIOR FACADE  
 SITE VISITS  
 MASONRY CURTAIN WALL (METAL PANEL)  
 ENVELOPE DESIGN/INSTALLATION AND TESTING

MOCK-UP WALL

ENVELOPE TESTING

BIM COORDINATION  
 BIM COORDINATION PRESENTATION

BIM COORDINATOR PRESENTATION

MECHANICAL ELECTRICAL AND PLUMBING INSTALLATION  
 MEETINGS  
 COLLABORATION WITH ARCHITECTURAL FIRMS  
 COMMERCIAL PROPERTY  
 ACCESSIBLE DESIGN/INSTALLATION

COMMISSIONING AGENT

INTERIOR FRAMING AND FINISHES  
 (SITE VISITS)  
 PLASTER/PRODUCED FORMWORK WALL CLASS ROOMS/GARAGES

SUSTAINABLE DESIGN

HVAC ENGINEER

FURNITURE  
 (SITE VISITS)

LANDSCAPE ARCH.



ACCESS AND PARKING FOR NEW SCHOOL



ABATE AND DEMO EXISTING BUILDING

FIELD AND SITE COMPLETION

JOB FAIR

JOB FAIR

JOB FAIR

NEW SCHOOL OCCUPANCY

JOB FAIR

PROJECT COMPLETION

JOB FAIR



ETA





ETA















*“ Seeing women in places of responsibility in the STEM industries just really makes a huge difference... **seeing yourself represented** and knowing that maybe I could go on to pursue something like this. Now, I am going on to WPI next year to work on an **engineering degree of my own.**”*

GRACE HENDERSON  
Doherty ETA Student &  
Fontaine Dimeo Intern

CITY OF  
WORCESTER  
WORFORCE  
GOALS

38%

MINORITY

10%

WOMEN

25%

WORCESTER  
RESIDENT

CITY OF  
WORCESTER  
BUSINESS  
ENTERPRISE  
GOALS

10%

MINORITY-OWNED  
BUSINESSES

5%

WOMEN-OWNED  
BUSINESSES











# Build Your FUTURE

Build Your Future  
www.BUILD4U.org



North Atlantic States Regional  
COUNCIL of CARPENTERS  
BOOTH #3









- Associated General Contractors of Massachusetts, Inc.
  - Non-profit association of 100 commercial construction contractors
- AGC MA Workforce Development Task Force
  - Created industry workforce development website [www.constructingma.org](http://www.constructingma.org)
  - Developed Building Advancement Externship immersing 7 educators in the commercial construction industry
    - All 7 schools have ongoing partnerships with AGC member firms
    - 4 of 7 established new relationships with building trades unions
    - >250 students attended site tours this year
    - >200 students participated in construction career panels
  - 2<sup>nd</sup> Building Advancement Externship (August 15-19) will give 13 teachers the same experience and connections
    - [Application is open now](#)
- AGC's goal is to clear up public misconceptions of the commercial construction industry and build a pipeline to the vocational and educational pathways to the industry

The logo for AGCMA Building Excellence is centered within a white circle on a blue background. The text "AGCMA" is in a large, bold, blue font, with "Building Excellence" in a smaller, blue font below it.

AGCMA  
Building Excellence

- **THE DESIGN AND CONSTRUCTION TEAM-UP**

Design, engineering and construction team collaboration allowed us to reach more students and to give a comprehensive picture of the project and job opportunities from concept to completion.

- **TIME INVESTMENT UP-FRONT**

Expect greater time investment at first to establish these relationships and build up meaningful presentations.

- **DISTRICT-LEVEL SUPPORT**

With complex curriculum requirements, timing and scheduling can be a challenge; It helps to have strong support and representation at the district level as these programs are established.

- **OPPORTUNITIES TO BE MORE HANDS-ON**

In the future, how can we consider ways that we can develop more interactive, hands-on exercises that could be integrated into the curriculum?





LIVING LAB



# MSBA DESIGNER ROUNDTABLE

## Doherty Memorial High School

# 3



**AGCMA**  
Building Excellence

**FONTAINE  
+ DIMEO**

 LPA Architects





